



ART BEAT CONTACT:
DUANE OR TODD -208-743-9351



Drawing Name: Port of Lewiston

Drawn By: Ron Glessner 07-18-18

ART BEAT 103 MAIN

SIZE	FSCM NO	DWG NO	REV
SCALE		SHEET 1	

REV.	DESCRIPTION	DATE	BY

Contact Information

 Port of Lewiston
 Dave Doeringsfeld
 208-743-5531
 Outside Plant Maintenance, LLC
 Ron Glessner 208-661-5648

State: ID
 County: Nez Perce
 City: Lewiston

 Section:
 Township:
 Range:
 Legal:



GENERAL CONSTRUCTION NOTES

CONTRACTOR IS RESPONSIBLE FOR ALL PERMITS EXCEPT STATE HWY., COUNTY ROAD,RAILROAD OR WATER CROSSINGS.

RESTORATION OF ALL RIGHT OF WAY GROUND WILL BE RESTORED TO ORIGINAL CONDITION OR BETTER.

CONTRACTOR WILL COORDINATE WITH OSP MANAGER 24 HRS. PRIOR TO BEGINNING CONSTRUCTION. CALL OSP MANAGER WHEN CONSTRUCTION IS COMPLETED. RON 208-661-5648

OSP MANAGER WILL CONTACT BUILDING OWNER/TENANT 24 HRS. PRIOR TO BEGINNING CONSTRUCTION TO COORDINATE ACCESS TO BUILDINGS.

CONTRACTOR IS RESPONSIBLE FOR CALLING LOCATES AND IS RESPONSIBLE FOR REPAIR AND RESTORATION OF DAMAGED UTILITIES.

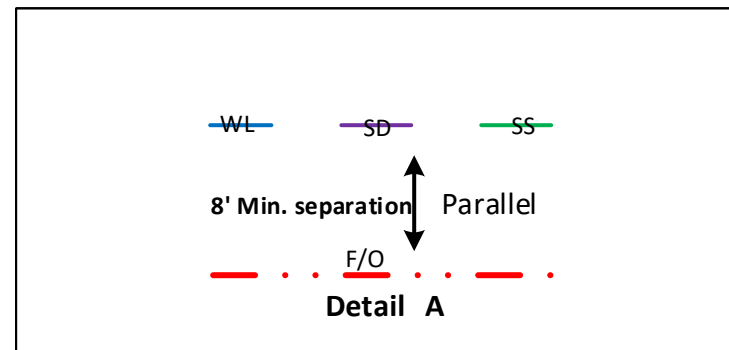
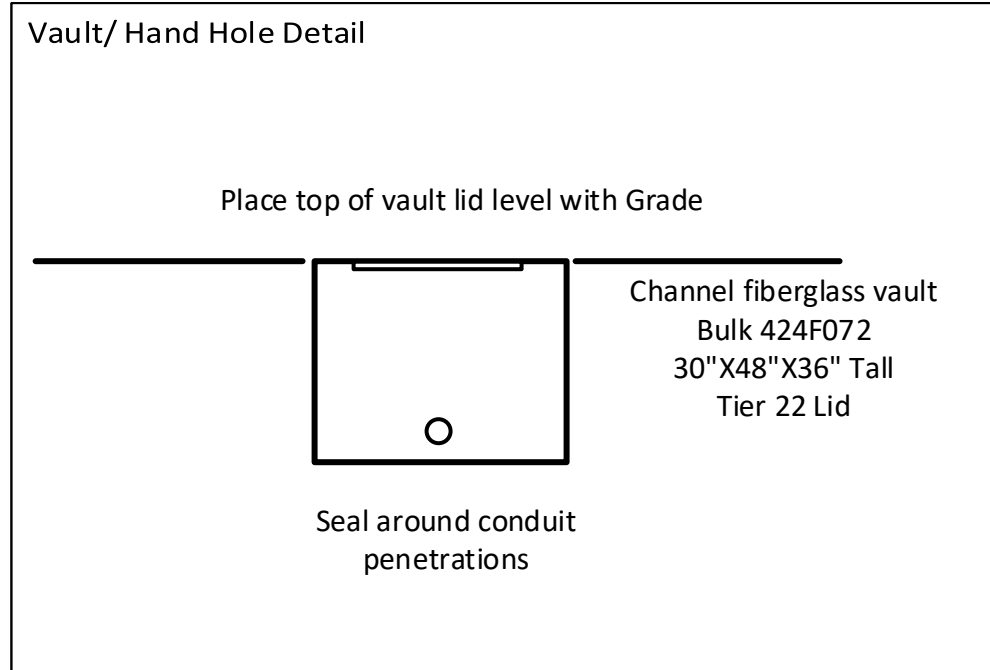
FOLLOW ALL NESC CONSTRUCTION GUIDELINES.

CONTRACTOR WILL HAVE ON SITE THE APPROVED DRAWINGS FROM THE UTILITY AND OR STATE,COUNTY,CITY,RAILROAD.

CONTRACTOR WILL PROVIDE CONDUIT , HAND HOLES , ANCHORS, AERIAL HARDWARE , LOCATE WIRE

PORT OF LEWISTON (POL) WILL PROVIDE , FIBER OPTIC CABLE , AERIAL MARKERS , AND LINE ROUTE MARKERS.

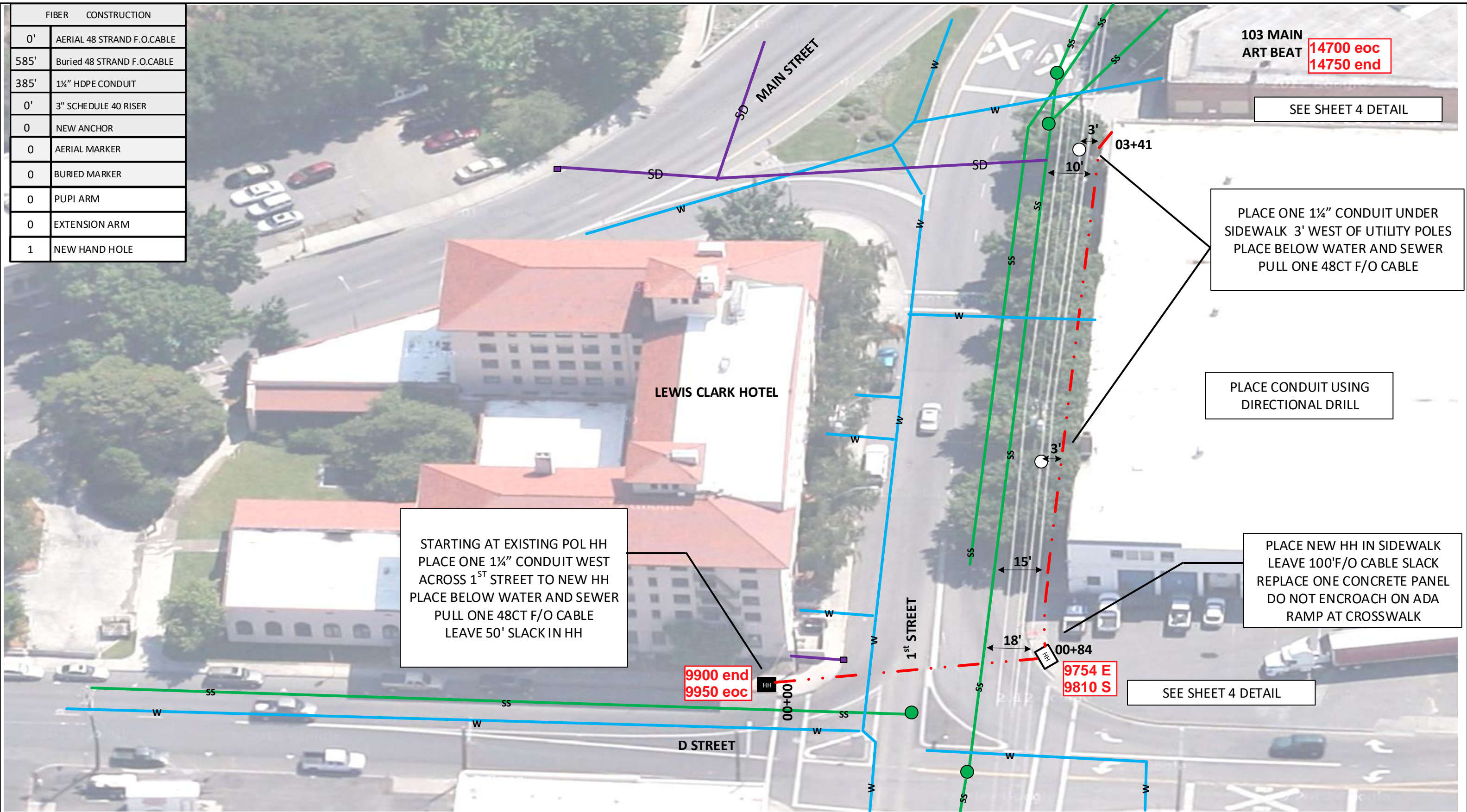
	CULVERT
	DIRECTIONAL BORE
	EXISTING CONDUIT
	BURIED CABLE
	NEW ANCHOR
	SIDEWALK ANCHOR
	EXISTING ANCHOR
	OVERHEAD GUY
	ATTACH TO POLE GROUND
	FIBER SLACK LOOP
	JOINT USE POLE
	CABLE CHANGE
	BURIED ROUTE MARKER
	EXISTING HAND HOLE
	NEW HAND HOLE



Drawing Name:Port of Lewiston	Drawn By:Ron Glessner 07-18-18				REV.	DESCRIPTION	DATE	BY	Contact Information Port of Lewiston Dave Doeringsfeld 208-743-5531 Outside Plant Maintenance,Ilc Ron Glessner208-661-5648	State:ID. County:Nez Perce City: Lewiston Section: Township: Range: Legal:
	ART BEAT 103 MAIN									
SIZE	FSCM NO	DWG NO	REV	REV.	DESCRIPTION	DATE	BY			
SCALE	No scale	SHEET 2		REV.	DESCRIPTION	DATE	BY			



FIBER	CONSTRUCTION
0'	AERIAL 48 STRAND F.O.CABLE
585'	Buried 48 STRAND F.O.CABLE
385'	1 1/4" HDPE CONDUIT
0'	3" SCHEDULE 40 RISER
0	NEW ANCHOR
0	AERIAL MARKER
0	BURIED MARKER
0	PUPI ARM
0	EXTENSION ARM
1	NEW HAND HOLE



103 MAIN
ART BEAT **14700 eoc**
14750 end

SEE SHEET 4 DETAIL

PLACE ONE 1 1/4" CONDUIT UNDER
SIDEWALK 3' WEST OF UTILITY POLES
PLACE BELOW WATER AND SEWER
PULL ONE 48CT F/O CABLE

PLACE CONDUIT USING
DIRECTIONAL DRILL

STARTING AT EXISTING POL HH
PLACE ONE 1 1/4" CONDUIT WEST
ACROSS 1ST STREET TO NEW HH
PLACE BELOW WATER AND SEWER
PULL ONE 48CT F/O CABLE
LEAVE 50' SLACK IN HH

PLACE NEW HH IN SIDEWALK
LEAVE 100' F/O CABLE SLACK
REPLACE ONE CONCRETE PANEL
DO NOT ENCROACH ON ADA
RAMP AT CROSSWALK

9900 end
9950 eoc

9754 E
9810 S

SEE SHEET 4 DETAIL

Drawing Name: Port of Lewiston	
SIZE	FSCM NO
SCALE	SHEET 3

Drawn By: Ron Glessner 07-18-18			
ART BEAT 103 MAIN			
DWG NO	REV		

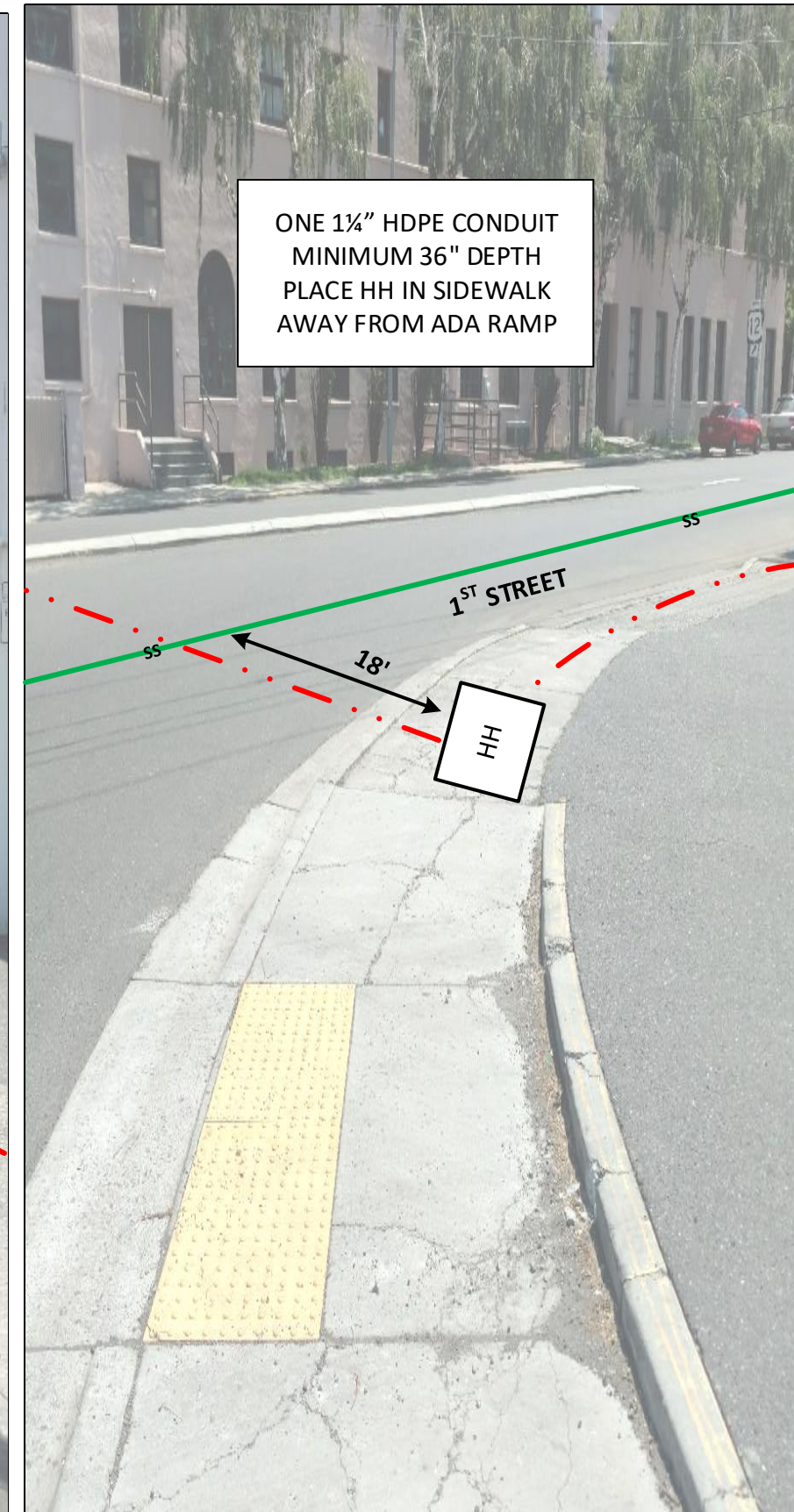
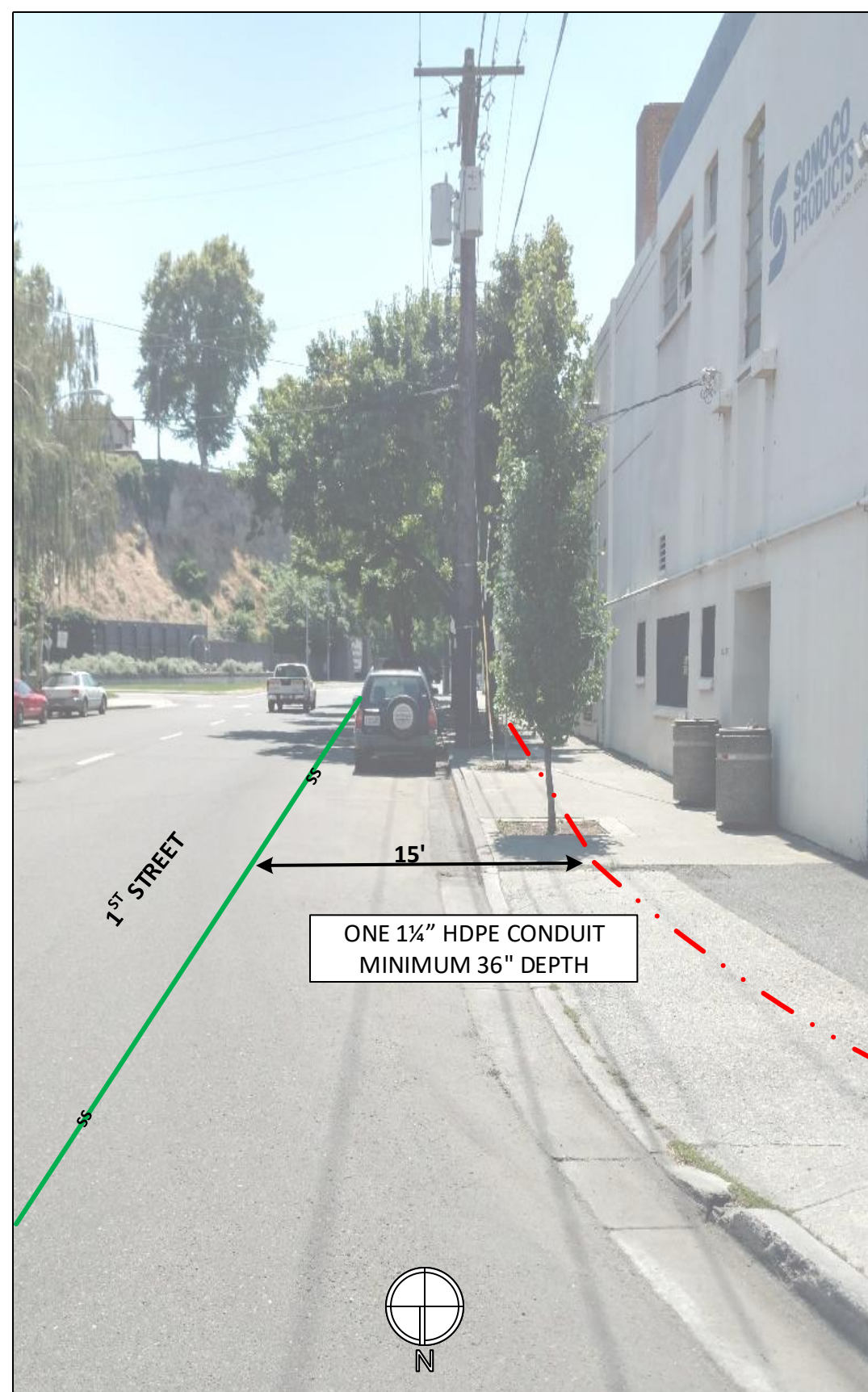
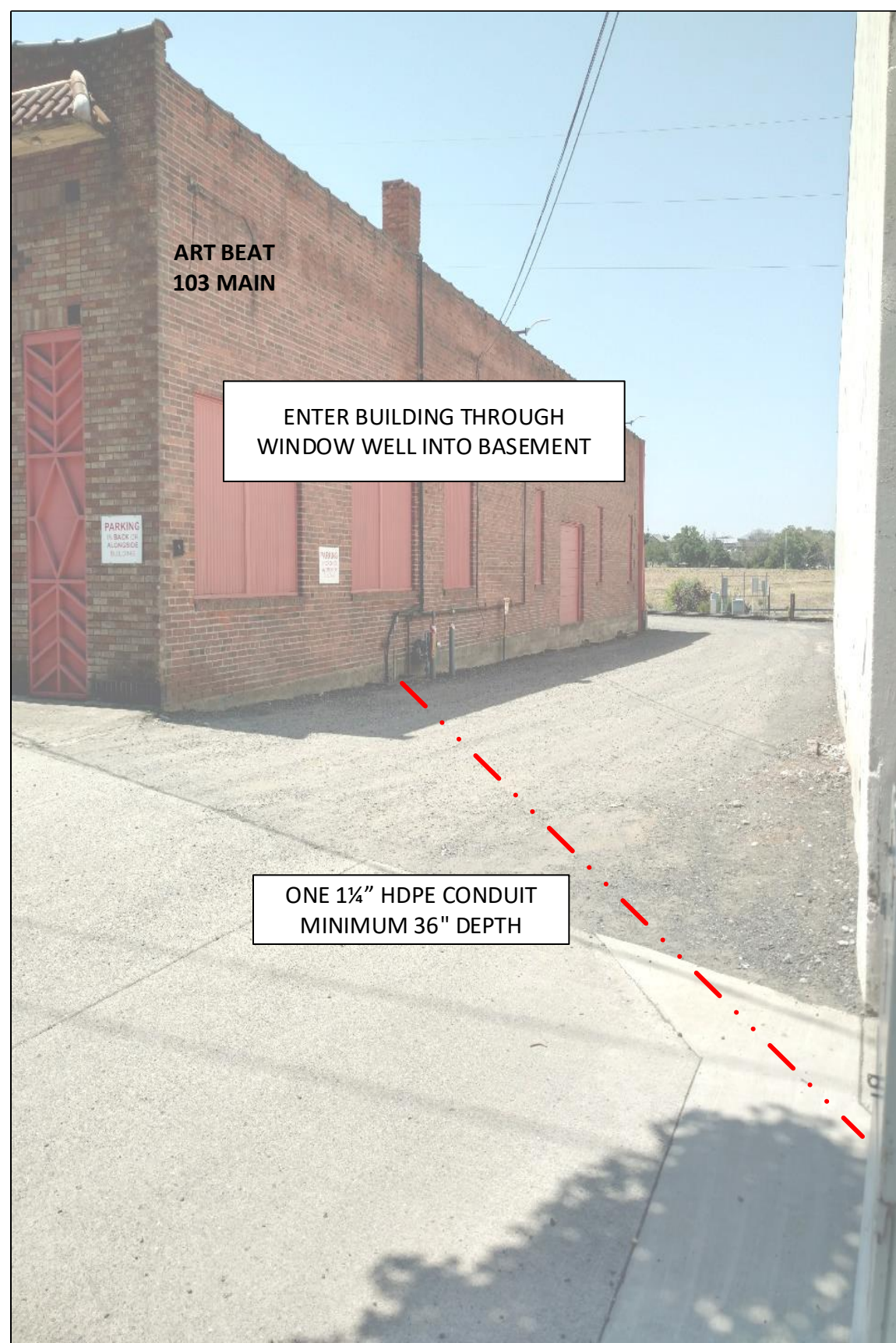
REV.	DESCRIPTION	DATE	BY

Contact Information

Port of Lewiston
Dave Doeringsfeld
208-743-5531
Outside Plant Maintenance, llc
Ron Glessner 208-661-5648

State: ID
County: Nez Perce
City: Lewiston

Section:
Township:
Range:
Legal:



Drawing Name: Port of Lewiston			
Drawn By: Ron Glessner 07-18-18			
ART BEAT 103 MAIN			
SIZE	FSCM NO	DWG NO	REV
SCALE	SHEET 4		

REV.	DESCRIPTION	DATE	BY
REV.	DESCRIPTION	DATE	BY
REV.	DESCRIPTION	DATE	BY
REV.	DESCRIPTION	DATE	BY
REV.	DESCRIPTION	DATE	BY

Contact Information	
Port of Lewiston Dave Doeringsfeld 208-743-5531 Outside Plant Maintenance, llc Ron Glessner 208-661-5648	

State: ID
County: Nez Perce
City: Lewiston
Section:
Township:
Range:
Legal:

State: ID County: Nez Perce City: Lewiston	
Section: Township: Range: Legal:	

