

Drawing Name: Port of Lewiston		Drawn By: Ron Glessner 09-05-18	
1303 MAIN			
SIZE	FSCM NO	DWG NO	REV
SCALE		SHEET 1	

REV.	DESCRIPTION	DATE	BY

Contact Information

Port of Lewiston
 Dave Doeringsfeld
 208-743-5531
 Outside Plant Maintenance, llc
 Ron Glessner 208-661-5648

State: ID
 County: Nez Perce
 City: Lewiston

Section:
 Township:
 Range:
 Legal:



GENERAL CONSTRUCTION NOTES

CONTRACTOR IS RESPONSIBLE FOR ALL PERMITS EXCEPT STATE HWY., COUNTY ROAD,RAILROAD OR WATER CROSSINGS.

RESTORATION OF ALL RIGHT OF WAY GROUND WILL BE RESTORED TO ORIGINAL CONDITION OR BETTER.

CONTRACTOR WILL COORDINATE WITH OSP MANAGER 24 HRS. PRIOR TO BEGINNING CONSTRUCTION. CALL OSP MANAGER WHEN CONSTRUCTION IS COMPLETED. RON 208-661-5648

OSP MANAGER WILL CONTACT BUILDING OWNER/TENANT 24 HRS. PRIOR TO BEGINNING CONSTRUCTION TO COORDINATE ACCESS TO BUILDINGS.

CONTRACTOR IS RESPONSIBLE FOR CALLING LOCATES AND IS RESPONSIBLE FOR REPAIR AND RESTORATION OF DAMAGED UTILITIES.

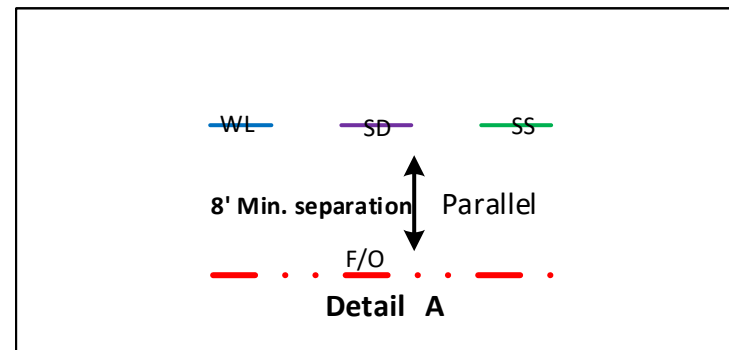
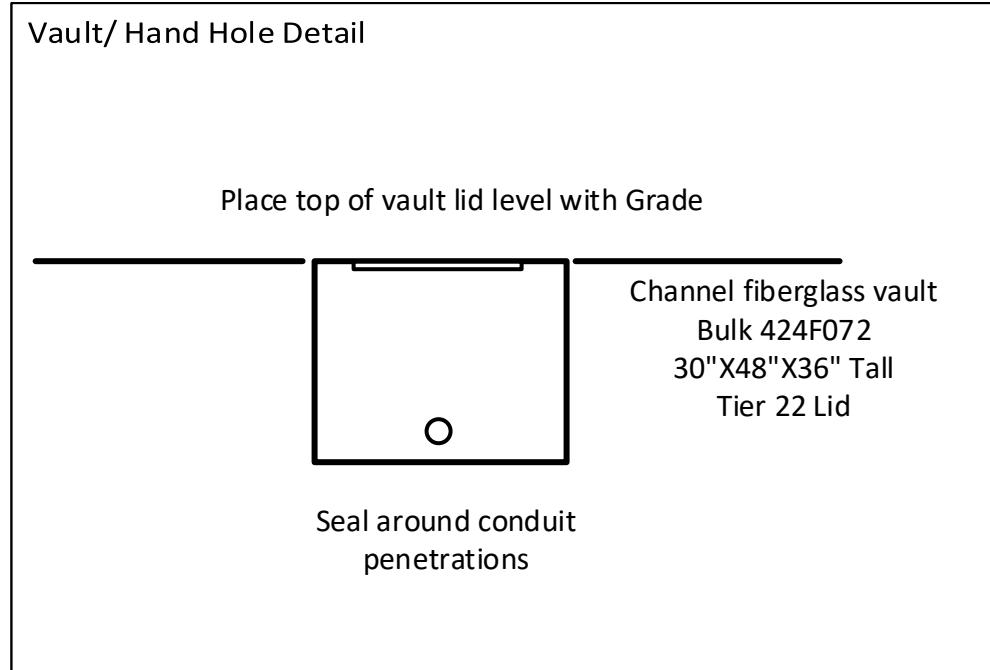
FOLLOW ALL NESC CONSTRUCTION GUIDELINES.

CONTRACTOR WILL HAVE ON SITE THE APPROVED DRAWINGS FROM THE UTILITY AND OR STATE,COUNTY,CITY,RAILROAD.

CONTRACTOR WILL PROVIDE CONDUIT , HAND HOLES , ANCHORS, AERIAL HARDWARE , LOCATE WIRE

PORT OF LEWISTON (POL) WILL PROVIDE , FIBER OPTIC CABLE , AERIAL MARKERS , AND LINE ROUTE MARKERS.

	CULVERT
	DIRECTIONAL BORE
	EXISTING CONDUIT
	BURIED CABLE
	NEW ANCHOR
	SIDEWALK ANCHOR
	EXISTING ANCHOR
	OVERHEAD GUY
	ATTACH TO POLE GROUND
	FIBER SLACK LOOP
	JOINT USE POLE
	CABLE CHANGE
	BURIED ROUTE MARKER
	EXISTING HAND HOLE
	NEW HAND HOLE



Drawing Name:Port of Lewiston		Drawn By:Ron Glessner 09-05-18				Contact Information				State:ID. County:Nez Perce City: Lewiston				
		1303 MAIN				REV.	DESCRIPTION	DATE	BY	Port of Lewiston Dave Doeringsfeld 208-743-5531 Outside Plant Maintenance,Ilc Ron Glessner208-661-5648			Section: Township: Range: Legal:	
						REV.	DESCRIPTION	DATE	BY					
SIZE	FSCM NO	DWG NO		REV	REV.	DESCRIPTION	DATE	BY						
SCALE	No scale		SHEET 2		REV.	DESCRIPTION	DATE	BY						

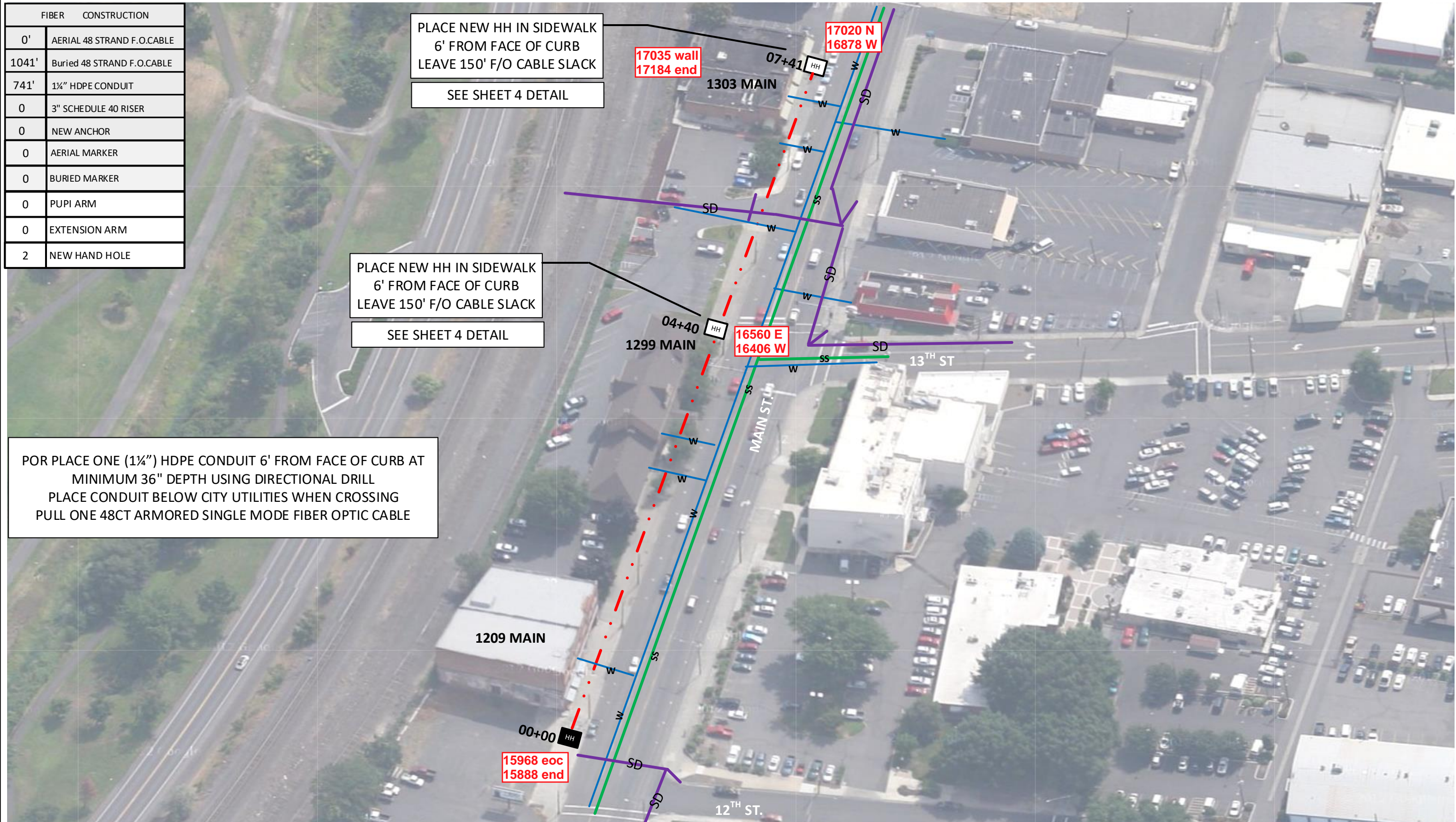


FIBER	CONSTRUCTION
0'	AERIAL 48 STRAND F.O.CABLE
1041'	Buried 48 STRAND F.O.CABLE
741'	1½" HDPE CONDUIT
0	3" SCHEDULE 40 RISER
0	NEW ANCHOR
0	AERIAL MARKER
0	BURIED MARKER
0	PUPI ARM
0	EXTENSION ARM
2	NEW HAND HOLE

PLACE NEW HH IN SIDEWALK
6' FROM FACE OF CURB
LEAVE 150' F/O CABLE SLACK
SEE SHEET 4 DETAIL

PLACE NEW HH IN SIDEWALK
6' FROM FACE OF CURB
LEAVE 150' F/O CABLE SLACK
SEE SHEET 4 DETAIL

POR PLACE ONE (1½") HDPE CONDUIT 6' FROM FACE OF CURB AT
MINIMUM 36" DEPTH USING DIRECTIONAL DRILL
PLACE CONDUIT BELOW CITY UTILITIES WHEN CROSSING
PULL ONE 48CT ARMORED SINGLE MODE FIBER OPTIC CABLE

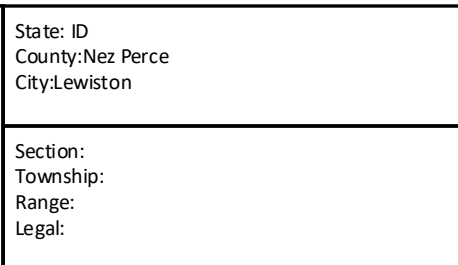


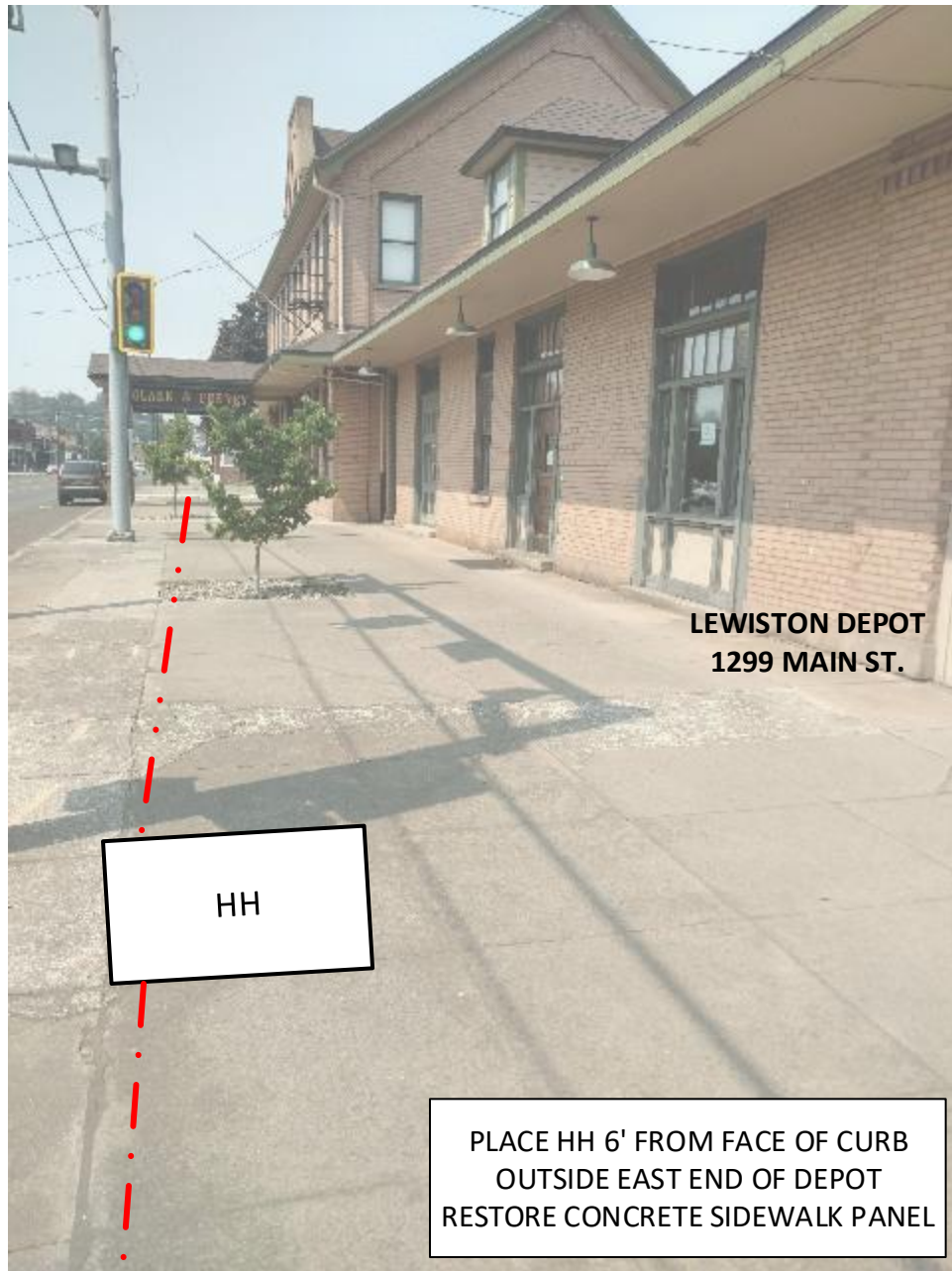
Drawing Name: Port of Lewiston			
Drawn By: Ron Glessner 09-05-18			
1303 MAIN			
SIZE	FSCM NO	DWG NO	REV
SCALE		SHEET 3	

REV.	DESCRIPTION	DATE	BY
REV.	DESCRIPTION	DATE	BY
REV.	DESCRIPTION	DATE	BY
REV.	DESCRIPTION	DATE	BY
REV.	DESCRIPTION	DATE	BY

Contact Information	
Port of Lewiston Dave Doeringsfeld 208-743-5531 Outside Plant Maintenance, llc Ron Glessner 208-661-5648	

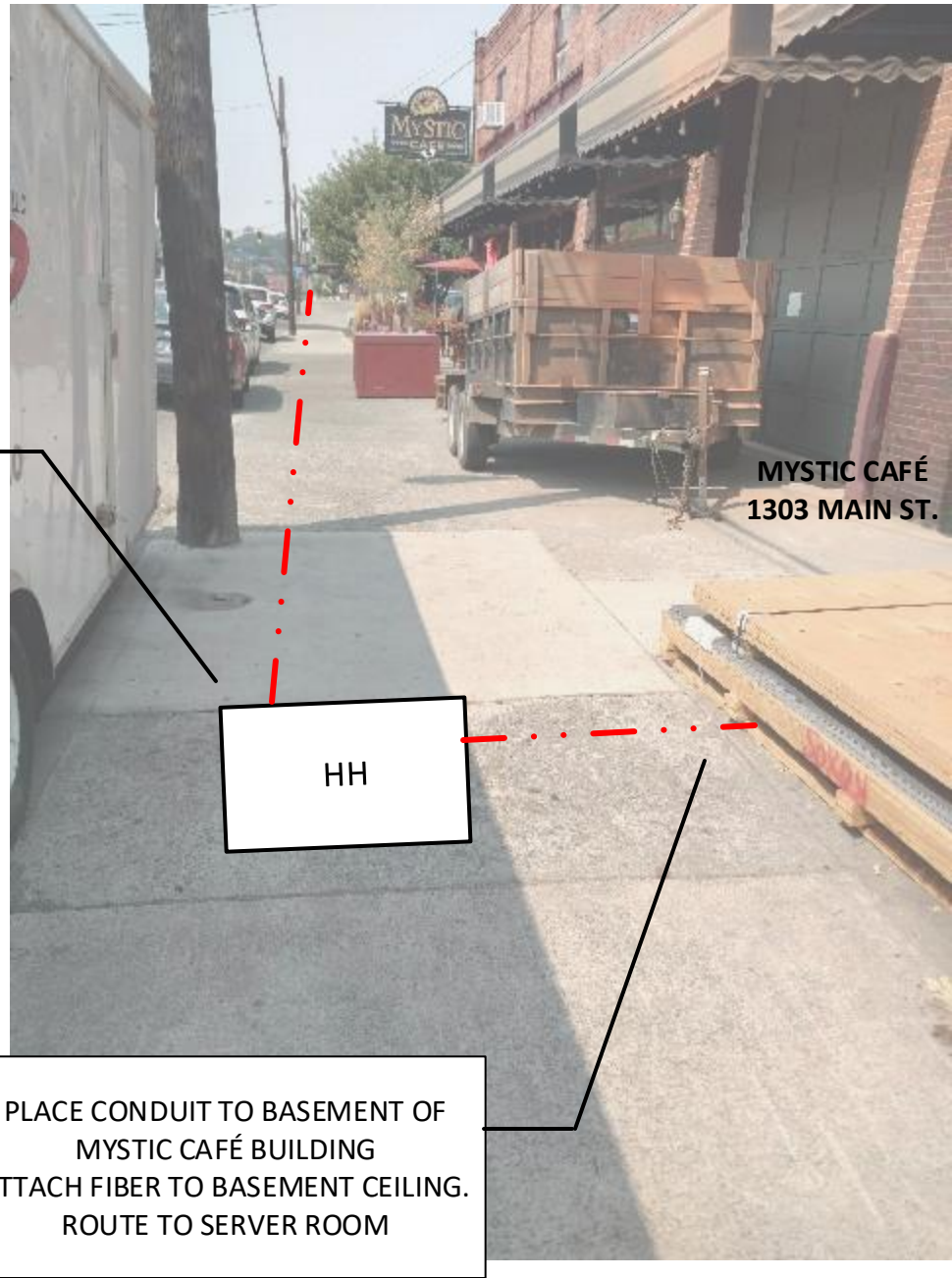
State: ID
County: Nez Perce
City: Lewiston
Section:
Township:
Range:
Legal:





CONTACT MIKE COOPER FOR BUILDING ENTRY
509-751-6491

PLACE HH 6' FROM FACE OF CURB
OUTSIDE EAST END OF MYSTIC CAFE
RESTORE CONCRETE SIDEWALK PANEL



Drawing Name: Port of Lewiston	Drawn By: Ron Glessner 09-05-18			
	1303 MAIN			
	SIZE	FSCM NO	DWG NO	REV
	SCALE		SHEET 4	

REV.	DESCRIPTION	DATE	BY

Contact Information

Port of Lewiston
Dave Doeringsfeld
208-743-5531
Outside Plant Maintenance, llc
Ron Glessner 208-661-5648

State: ID
County: Nez Perce
City: Lewiston

Section:
Township:
Range:
Legal:

