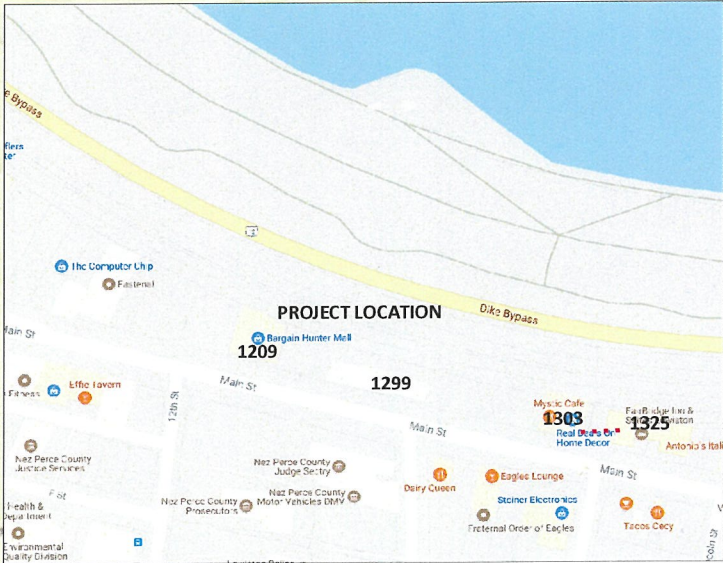




**CONTACT FAIRBRIDGE INN
GENERAL MANAGER MICHAEL
ENOKIZONO 208-746-3311
BEFORE BUILDING ENTRY.**



Drawing Name: Port of Lewiston

Drawn By: Ron Glessner 08-12-19

1325 MAIN STREET

SIZE	FSCMNO	DWG NO	REV
SCALE		SHEET 1	

REV.	DESCRIPTION	DATE	BY

Contact Information

Port of Lewiston
Dave Doeringsfeld
208-743-5531
Outside Plant Maintenance, llc
Ron Glessner 208-661-5648

State: ID
County: Nez Perce
City: Lewiston

Section:
Township:
Range:
Legal:



GENERAL CONSTRUCTION NOTES

CONTRACTOR IS RESPONSIBLE FOR ALL PERMITS EXCEPT STATE HWY., COUNTY ROAD,RAILROAD OR WATER CROSSINGS.

RESTORATION OF ALL RIGHT OF WAY GROUND WILL BE RESTORED TO ORIGINAL CONDITION OR BETTER.

CONTRACTOR WILL COORDINATE WITH OSP MANAGER 24 HRS. PRIOR TO BEGINNING CONSTRUCTION. CALL OSP MANAGER WHEN CONSTRUCTION IS COMPLETED. RON 208-661-5648

OSP MANAGER WILL CONTACT BUILDING OWNER/TENANT 24 HRS. PRIOR TO BEGINNING CONSTRUCTION TO COORDINATE ACCESS TO BUILDINGS.

CONTRACTOR IS RESPONSIBLE FOR CALLING LOCATES AND IS RESPONSIBLE FOR REPAIR AND RESTORATION OF DAMAGED UTILITIES.

FOLLOW ALL NESC CONSTRUCTION GUIDELINES.

CONTRACTOR WILL HAVE ON SITE THE APPROVED DRAWINGS FROM THE UTILITY AND OR STATE,COUNTY,CITY,RAILROAD.

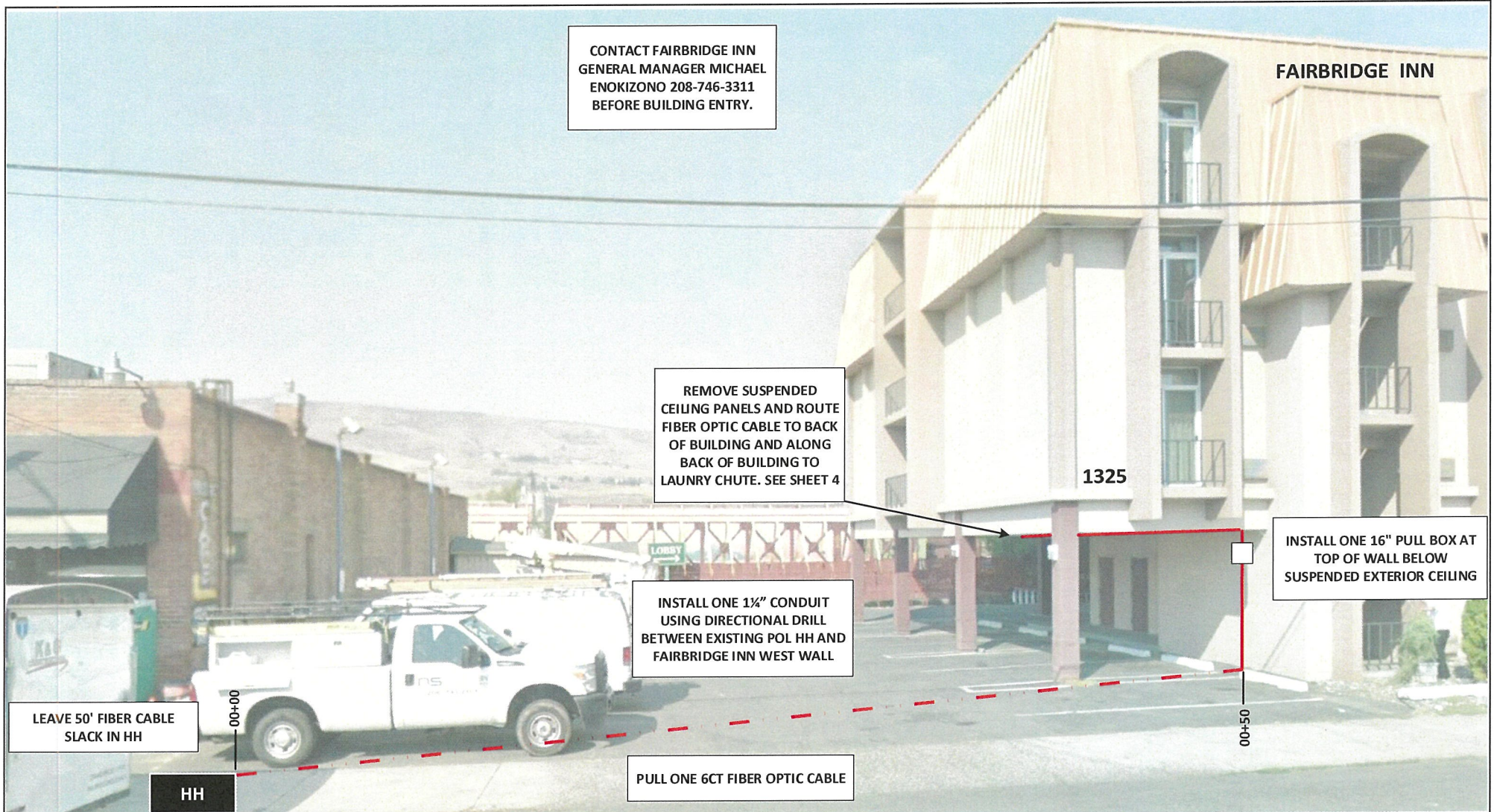
CONTRACTOR WILL PROVIDE CONDUIT , FIBER OPTIC CABLE, PULL BOX

**CONTACT FAIRBRIDGE INN
GENERAL MANAGER MICHAEL
ENOKIZONO 208-746-3311
BEFORE BUILDING ENTRY.**

	CULVERT
	DIRECTIONAL BORE
	AERIAL CABLE
	BURIED CABLE
	NEW ANCHOR
	SIDEWALK ANCHOR
	EXISTING ANCHOR
	OVERHEAD GUY
	ATTACH TO POLE GROUND
	FIBER SLACK LOOP
	FOREIGN POLE
	CABLE CHANGE
	BURIED ROUTE MARKER
	EXISTING HAND HOLE
	NEW HAND HOLE

Drawing Name:Port of Lewiston	Drawn By:Ron Glessner 08-12-19				Contact Information	State:ID. County:Nez Perce City: Lewiston
	1325 MAIN STREET					
	REV.	DESCRIPTION	DATE	BY	Port of Lewiston Dave Doeringsfeld 208-743-5531 Outside Plant Maintenance,llc Ron Glessner208-661-5648	Section: Township: Range: Legal:
	REV.	DESCRIPTION	DATE	BY		
	REV.	DESCRIPTION	DATE	BY		
	REV.	DESCRIPTION	DATE	BY		
	SIZE	FSCM NO	DWG NO	REV		
	SCALE	No scale	SHEET 2			





CONTACT FAIRBRIDGE INN
 GENERAL MANAGER MICHAEL
 ENOKIZONO 208-746-3311
 BEFORE BUILDING ENTRY.

FAIRBRIDGE INN

1325

REMOVE SUSPENDED
 CEILING PANELS AND ROUTE
 FIBER OPTIC CABLE TO BACK
 OF BUILDING AND ALONG
 BACK OF BUILDING TO
 LAUNRY CHUTE. SEE SHEET 4

INSTALL ONE 16" PULL BOX AT
 TOP OF WALL BELOW
 SUSPENDED EXTERIOR CEILING

INSTALL ONE 1½" CONDUIT
 USING DIRECTIONAL DRILL
 BETWEEN EXISTING POL HH AND
 FAIRBRIDGE INN WEST WALL

LEAVE 50' FIBER CABLE
 SLACK IN HH

HH

PULL ONE 6CT FIBER OPTIC CABLE

Drawing Name: Port of Lewiston

Drawn By: Ron Glessner 08-12-19

1325 MAIN STREET

SIZE	FSCM NO	DWG NO	REV
SCALE		SHEET 3	

REV.	DESCRIPTION	DATE	BY

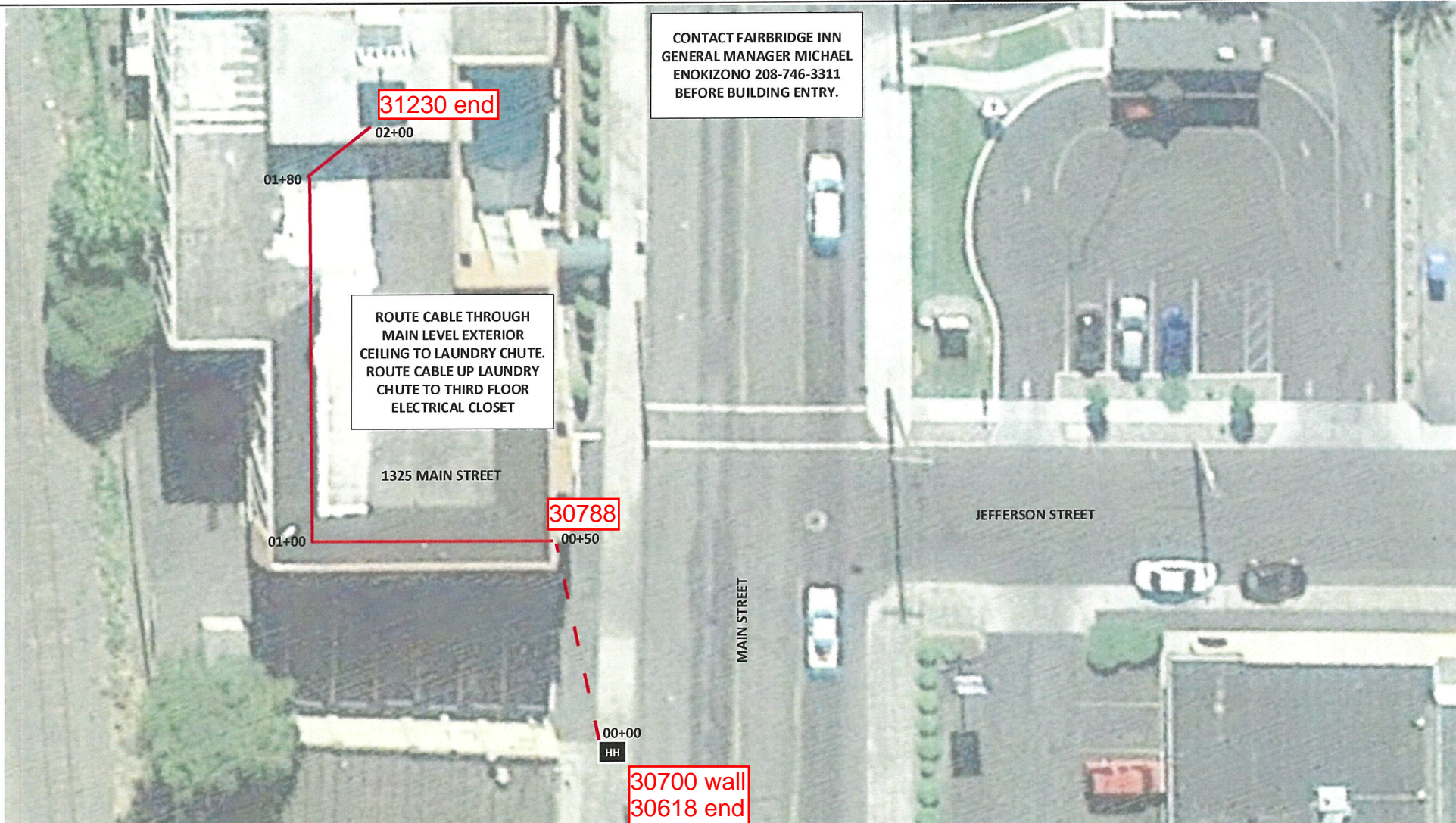
Contact Information

Port of Lewiston
 Dave Doeringsfeld
 208-743-5531
 Outside Plant Maintenance, llc
 Ron Glessner 208-661-5648

State: ID
 County: Nez Perce
 City: Lewiston

Section:
 Township:
 Range:
 Legal:





CONTACT FAIRBRIDGE INN
 GENERAL MANAGER MICHAEL
 ENOKIZONO 208-746-3311
 BEFORE BUILDING ENTRY.

ROUTE CABLE THROUGH
 MAIN LEVEL EXTERIOR
 CEILING TO LAUNDRY CHUTE.
 ROUTE CABLE UP LAUNDRY
 CHUTE TO THIRD FLOOR
 ELECTRICAL CLOSET

Drawing Name: Port of Lewiston

Drawn By: Ron Glessner 08-12-19

1325 MAIN STREET

SIZE	FSCM NO	DWG NO	REV
SCALE		SHEET 4	

REV.	DESCRIPTION	DATE	BY

Contact Information
 Port of Lewiston
 Dave Doeringsfeld
 208-743-5531
 Outside Plant Maintenance, llc
 Ron Glessner 208-661-5648

State: ID
 County: Nez Perce
 City: Lewiston
 Section:
 Township:
 Range:
 Legal:

