

Project begins at Avista pole # 144463 at the intersection of 17th st. and 16th ave proceeding east to Avista pole 144462. Over lash one 12ct F/O cable. Place cable to building roof on north side of 16th ave.

AVISTA	#
DIST. POLES	2
TXM. POLES	0
CONDUITS	0
ANCHORS	0
MGN'S	2

CONTACTS:

AVISTA:
TODD ELLSWORTH -509-495-2773

CABLE ONE:
TOM DONOHUE – 208-791-5032

X O COMMUNICATIONS:
STEVE STYERN – 509-444-8547

CENTURY LINK:
RICK HARMS – 509-235-3349

Drawing Name:Port of Lewiston		Drawn By: Ron Glessner 07-26-18			
		1522 17th STREET			
SIZE	FSCM NO	DWG NO		REV	
SCALE		SHEET 1			

REV.	DESCRIPTION	DATE	BY

Contact Information

Port of Lewiston
Dave Doeringsfeld
208-743-5531
Outside Plant Maintenance, llc
Ron Glessner208-661-5648

State: ID
County:Nez Perce
City:Lewiston

Section:
Township:
Range:
Legal:



GENERAL CONSTRUCTION NOTES

CONTRACTOR IS RESPONSIBLE FOR ALL PERMITS EXCEPT STATE HWY., COUNTY ROAD,RAILROAD OR WATER CROSSINGS.

RESTORATION OF ALL RIGHT OF WAY GROUND WILL BE RESTORED TO ORIGINAL CONDITION OR BETTER.

CONTRACTOR WILL COORDINATE WITH OSP MANAGER 24 HRS. PRIOR TO BEGINNING CONSTRUCTION. CALL OSP MANAGER WHEN CONSTRUCTION IS COMPLETED. RON 208-661-5648

OSP MANAGER WILL CONTACT BUILDING OWNER/TENANT 24 HRS. PRIOR TO BEGINNING CONSTRUCTION TO COORDINATE ACCESS TO BUILDINGS.

CONTRACTOR IS RESPONSIBLE FOR CALLING LOCATES AND IS RESPONSIBLE FOR REPAIR AND RESTORATION OF DAMAGED UTILITIES.

FOLLOW ALL NESC CONSTRUCTION GUIDELINES.

CONTRACTOR WILL HAVE ON SITE THE APPROVED DRAWINGS FROM THE UTILITY AND OR STATE,COUNTY,CITY,RAILROAD.

CONTRACTOR WILL PROVIDE FIBER OPTIC CABLE , HAND HOLES , ANCHORS, AERIAL HARDWARE , LOCATE WIRE

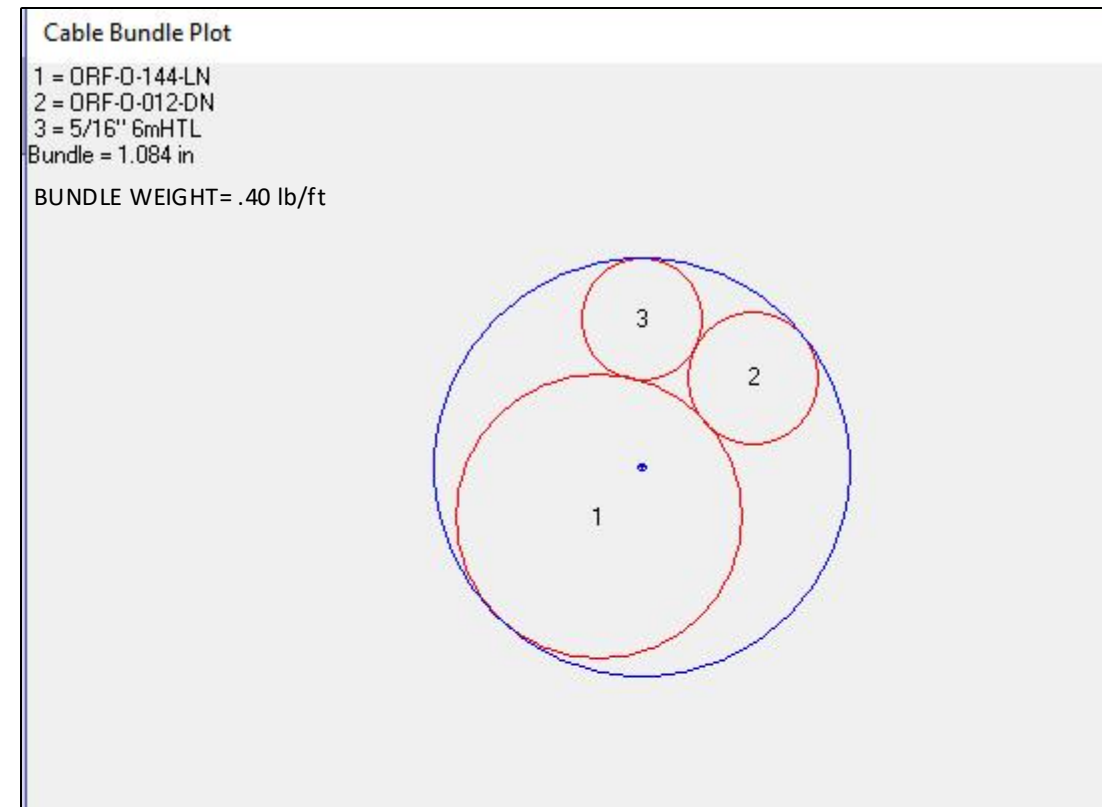
PORT OF LEWISTON (POL) WILL PROVIDE , AERIAL MARKERS , AND LINE ROUTE MARKERS.

FIBER CONSTRUCTION TOTAL	
450'	AERIAL 12 STRAND F.O.CABLE
0'	Buried 12 STRAND F.O.CABLE
0'	1 1/2" HDPE CONDUIT
0	2" SCHEDULE 40 RISER
0	NEW ANCHOR
0	AERIAL MARKER
0	BURIED MARKER
0	PUPI ARM
0	EXTENSION ARM
0	NEW HAND HOLE

ABBREVIATIONS:

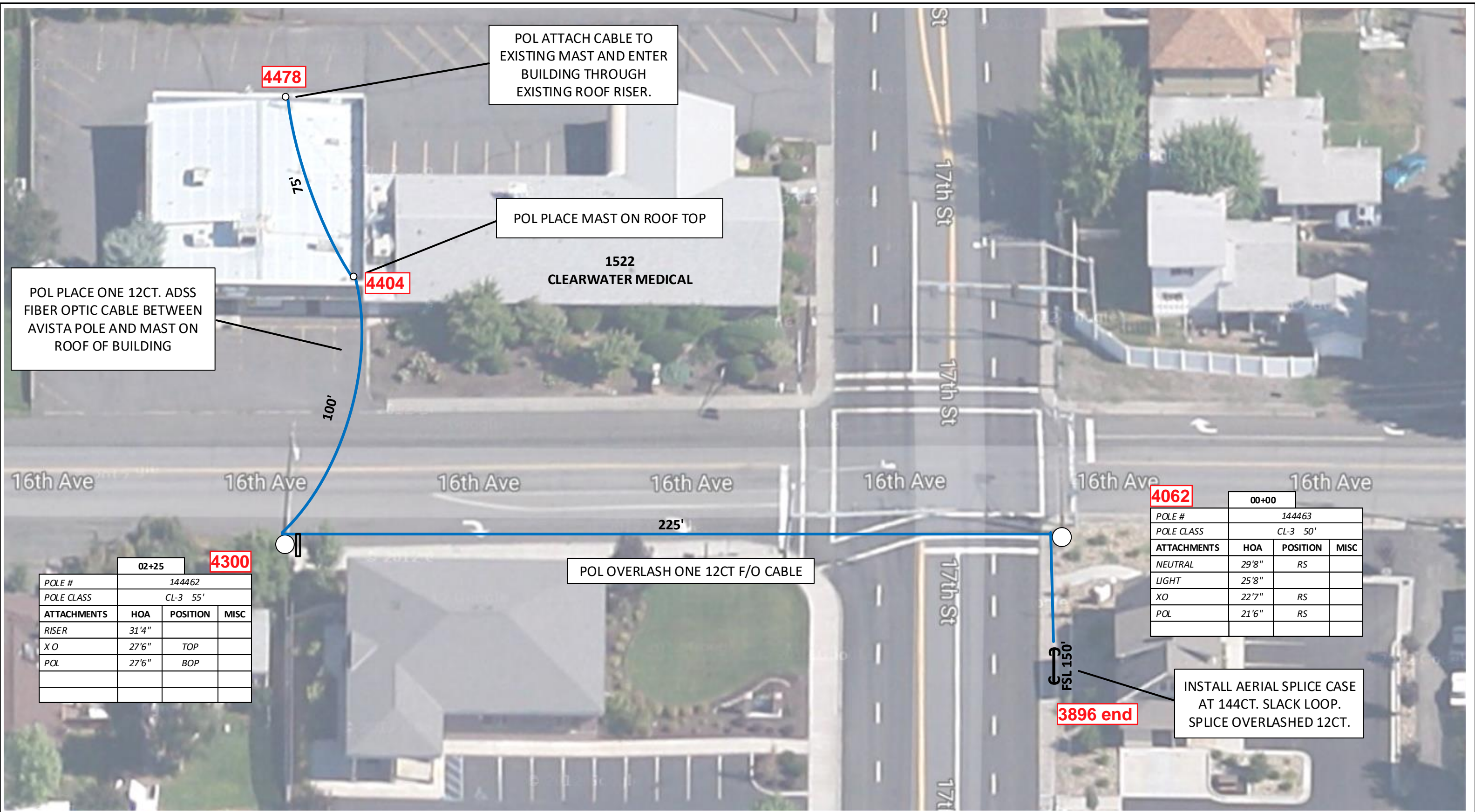
TIP	TOP INSIDE POSITION
TOP	TOP OUTSIDE POSITION
BIP	BOTTOM INSIDE POSITION
BOP	BOTTOM OUTSIDE POSTION
EA	EXTENSION ARM
PEA	PLACE EXTENSION ARM
RS	ROAD SIDE
FS	FIELD SIDE
DE	DEAD END
HOA	HEIGHT OF ATTACHMENT

	CULVERT
	DIRECTIONAL BORE
	AERIAL CABLE
	BURIED CABLE
	NEW ANCHOR
	SIDEWALK ANCHOR
	EXISTING ANCHOR
	OVERHEAD GUY
	ATTACH TO POLE GROUND
	FIBER SLACK LOOP
	JOINT USE POLE
	CABLE CHANGE
	BURIED ROUTE MARKER
	EXISTING HAND HOLE
	NEW HAND HOLE



Drawing Name:Port of Lewiston	Drawn By:Ron Glessner 07-26-18				REV.	DESCRIPTION	DATE	BY	Contact Information Port of Lewiston Dave Doeringsfeld 208-743-5531 Outside Plant Maintenance,llc Ron Glessner208-661-5648	State:ID. County:Nez Perce City: Lewiston Section: Township: Range: Legal:
	1522 17th STREET									
SIZE	FSCM NO	DWG NO	REV	REV.	DESCRIPTION	DATE	BY			
SCALE	No scale	SHEET 2		REV.	DESCRIPTION	DATE	BY			





POL PLACE ONE 12CT. ADSS FIBER OPTIC CABLE BETWEEN AVISTA POLE AND MAST ON ROOF OF BUILDING

POL ATTACH CABLE TO EXISTING MAST AND ENTER BUILDING THROUGH EXISTING ROOF RISER.

POL PLACE MAST ON ROOF TOP

1522 CLEARWATER MEDICAL

POL OVERLASH ONE 12CT F/O CABLE

INSTALL AERIAL SPLICE CASE AT 144CT. SLACK LOOP. SPLICE OVERLASHED 12CT.

	02+25	4300
POLE #	144462	
POLE CLASS	CL-3 55'	
ATTACHMENTS	HOA	POSITION MISC
RISER	31'4"	
XO	27'6"	TOP
POL	27'6"	BOP

	00+00	4062
POLE #	144463	
POLE CLASS	CL-3 50'	
ATTACHMENTS	HOA	POSITION MISC
NEUTRAL	29'8"	RS
LIGHT	25'8"	
XO	22'7"	RS
POL	21'6"	RS

Drawing Name: Port of Lewiston		Drawn By: Ron Glessner 07-26-18	
1522 17th STREET			
SIZE	FSCM NO	DWG NO	REV
SCALE			SHEET 3

REV.	DESCRIPTION	DATE	BY
REV.	DESCRIPTION	DATE	BY
REV.	DESCRIPTION	DATE	BY
REV.	DESCRIPTION	DATE	BY
REV.	DESCRIPTION	DATE	BY

Contact Information
 Port of Lewiston
 Dave Doeringsfeld
 208-743-5531
 Outside Plant Maintenance, llc
 Ron Glessner 208-661-5648

State: ID
 County: Nez Perce
 City: Lewiston
 Section:
 Township:
 Range:
 Legal:

