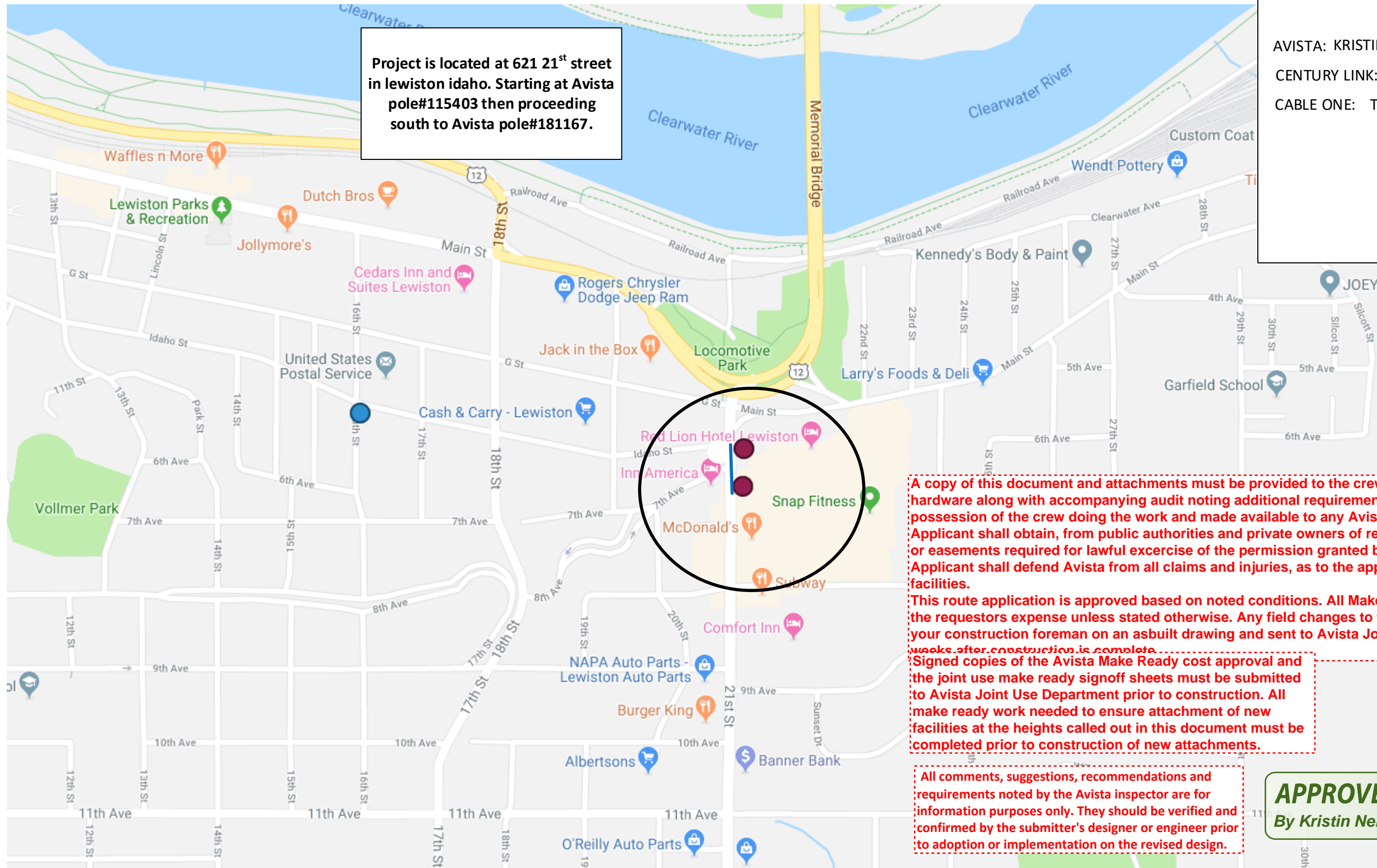


Project is located at 621 21st street in Lewiston Idaho. Starting at Avista pole#115403 then proceeding south to Avista pole#181167.

CONTACTS:
 AVISTA: KRISTIN NELSON- 509-209-4772
 CENTURY LINK: Rick Harms – 509-235-3349
 CABLE ONE: TOM DONOHUE – 208-791-5032

AVISTA	#
DIST. POLES	2
TXM. POLES	0
CONDUITS	0
ANCHORS	0
MGN'S	2



A copy of this document and attachments must be provided to the crew installing the cable and hardware along with accompanying audit noting additional requirements. This paperwork must be in possession of the crew doing the work and made available to any Avista employee on demand. Applicant shall obtain, from public authorities and private owners of real property any and all permits or easements required for lawful exercise of the permission granted by this approved application. Applicant shall defend Avista from all claims and injuries, as to the applicants right to be on Avista facilities.

This route application is approved based on noted conditions. All Make Ready (MR) costs shall be at the requestors expense unless stated otherwise. Any field changes to the design must be noted by your construction foreman on an asbuilt drawing and sent to Avista Joint Use Dept no later than two weeks after construction is complete.

Signed copies of the Avista Make Ready cost approval and the joint use make ready signoff sheets must be submitted to Avista Joint Use Department prior to construction. All make ready work needed to ensure attachment of new facilities at the heights called out in this document must be completed prior to construction of new attachments.

All comments, suggestions, recommendations and requirements noted by the Avista inspector are for information purposes only. They should be verified and confirmed by the submitter's designer or engineer prior to adoption or implementation on the revised design.

APPROVED
 By Kristin Nelson at 10:33 am, Apr 30, 2019

Drawing Name: Port of Lewiston		Drawn By: Ron Glessner 04-05-19	
RED LION LEWISTON			
SIZE	FSCM NO	DWG NO	REV
SCALE		SHEET 1	

REV.	DESCRIPTION	DATE	BY
REVISED		04-18-19	RG
REV.	DESCRIPTION	DATE	BY
REV.	DESCRIPTION	DATE	BY
REV.	DESCRIPTION	DATE	BY
REV.	DESCRIPTION	DATE	BY

Contact Information	State: ID County: Nez Perce City: Lewiston
Port of Lewiston Dave Doeringsfeld 208-743-5531 Outside Plant Maintenance, LLC Ron Glessner 208-661-5648	Section: Township: Range: Legal:



GENERAL CONSTRUCTION NOTES

CONTRACTOR IS RESPONSIBLE FOR ALL PERMITS EXCEPT STATE HWY., COUNTY ROAD,RAILROAD OR WATER CROSSINGS.

RESTORATION OF ALL RIGHT OF WAY GROUND WILL BE RESTORED TO ORIGINAL CONDITION OR BETTER.

CONTRACTOR WILL COORDINATE WITH OSP MANAGER 24 HRS. PRIOR TO BEGINNING CONSTRUCTION.

OSP MANAGER WILL CONTACT BUILDING OWNER/TENANT 24 HRS. PRIOR TO BEGINNING CONSTRUCTION TO COORDINATE ACCESS TO BUILDINGS.

CONTRACTOR IS RESPONSIBLE FOR CALLING LOCATES AND IS RESPONSIBLE FOR REPAIR AND RESTORATION OF DAMAGED UTILITIES.

FOLLOW ALL NESC CONSTRUCTION GUIDELINES.

BURIED CONDUIT MUST CROSS UNDERNEATH ALL CITY UTILITIES

CONTRACTOR WILL HAVE ON SITE THE APPROVED DRAWINGS FROM THE UTILITY AND OR STATE,COUNTY,CITY,RAILROAD.

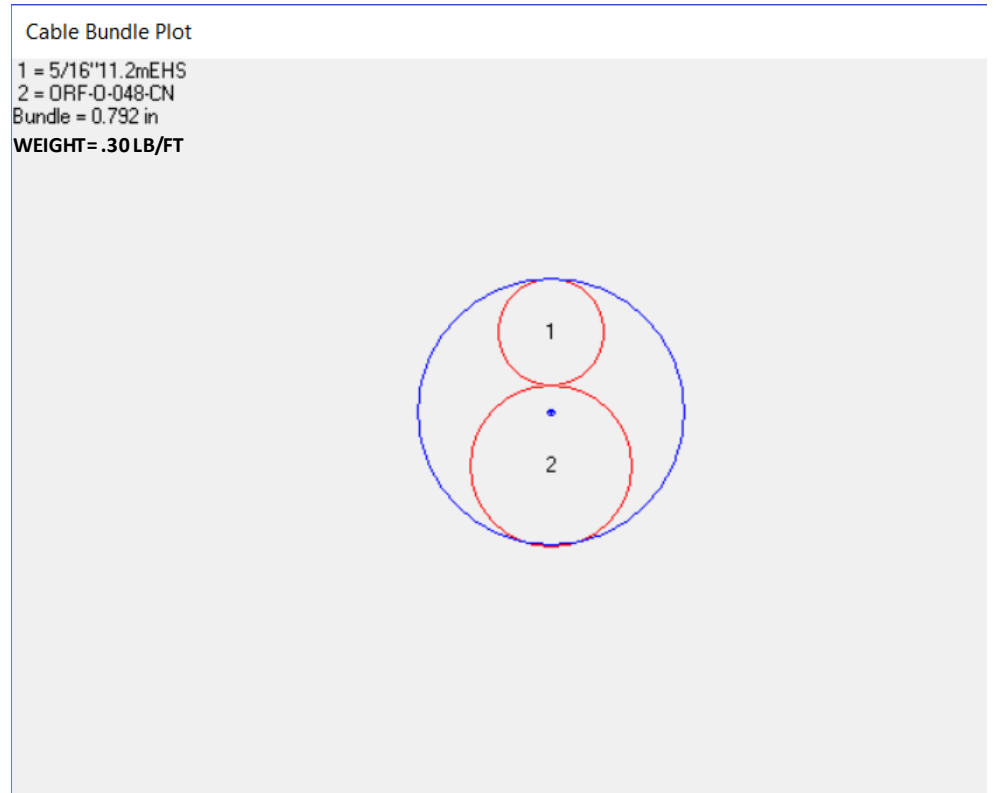
CONTRACTOR WILL PROVIDE AERIAL HARDWARE, MESSENGER CABLE, CONDUIT AND ANCHORS.

PORT OF LEWISTON WILL PROVIDE FIBER OPTIC CABLE AND AERIAL MARKERS

ABBREVIATIONS:

TIP	TOP INSIDE POSITION
TOP	TOP OUTSIDE POSITION
BIP	BOTTOM INSIDE POSITION
BOP	BOTTOM OUTSIDE POSITION
EA	EXTENSION ARM
PEA	PLACE EXTENSION ARM
RS	ROAD SIDE
FS	FIELD SIDE
DE	DEAD END
HOA	HEIGHT OF ATTACHMENT

	CULVERT
	DIRECTIONAL BORE
	AERIAL CABLE
	BURIED CABLE
	NEW ANCHOR
	SIDEWALK ANCHOR
	EXISTING ANCHOR
	OVERHEAD GUY
	ATTACH TO POLE GROUND
	FIBER SLACK LOOP
	JOINT USE POLE
	CABLE CHANGE
	BURIED ROUTE MARKER
	EXISTING HAND HOLE
	NEW HAND HOLE



APPROVED
 By Kristin Nelson at 10:33 am, Apr 30, 2019

Drawing Name:Port of Lewiston		Drawn By:Ron Glessner 04-05-19	
RED LION LEWISTON			
SIZE	FSCM NO	DWG NO	REV
SCALE	No scale	SHEET 2	

REV.	DESCRIPTION	DATE	BY

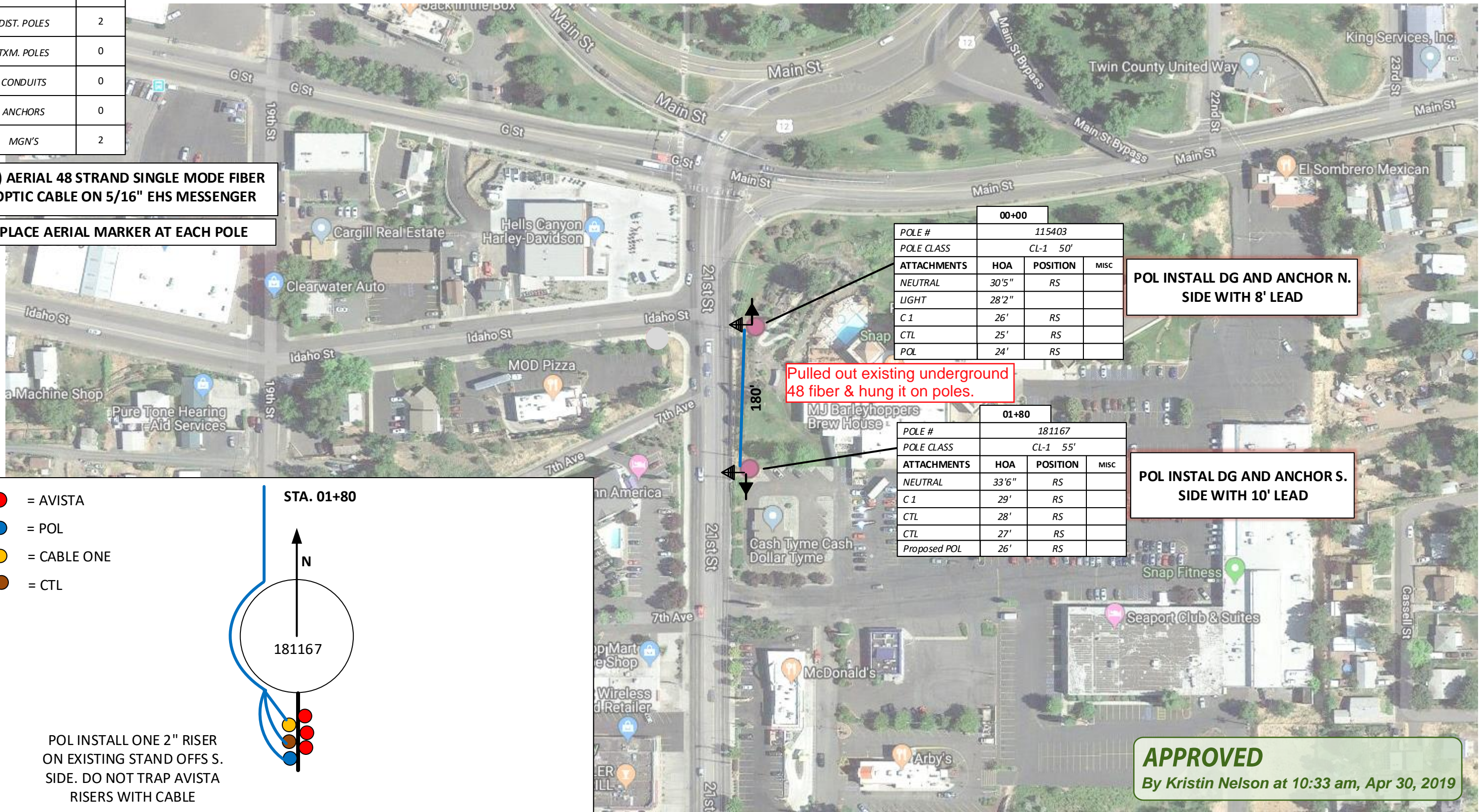
Contact Information	State:ID County:Nez Perce City:Lewiston
Port of Lewiston Dave Doeringsfeld 208-753-5531 Outside Plant Maintenance,Ilc Ron Glessner208-661-5648	Section: Township: Range: Legal:



AVISTA	#
DIST. POLES	2
TXM. POLES	0
CONDUITS	0
ANCHORS	0
MGN'S	2

(1) AERIAL 48 STRAND SINGLE MODE FIBER OPTIC CABLE ON 5/16" EHS MESSENGER

PLACE AERIAL MARKER AT EACH POLE

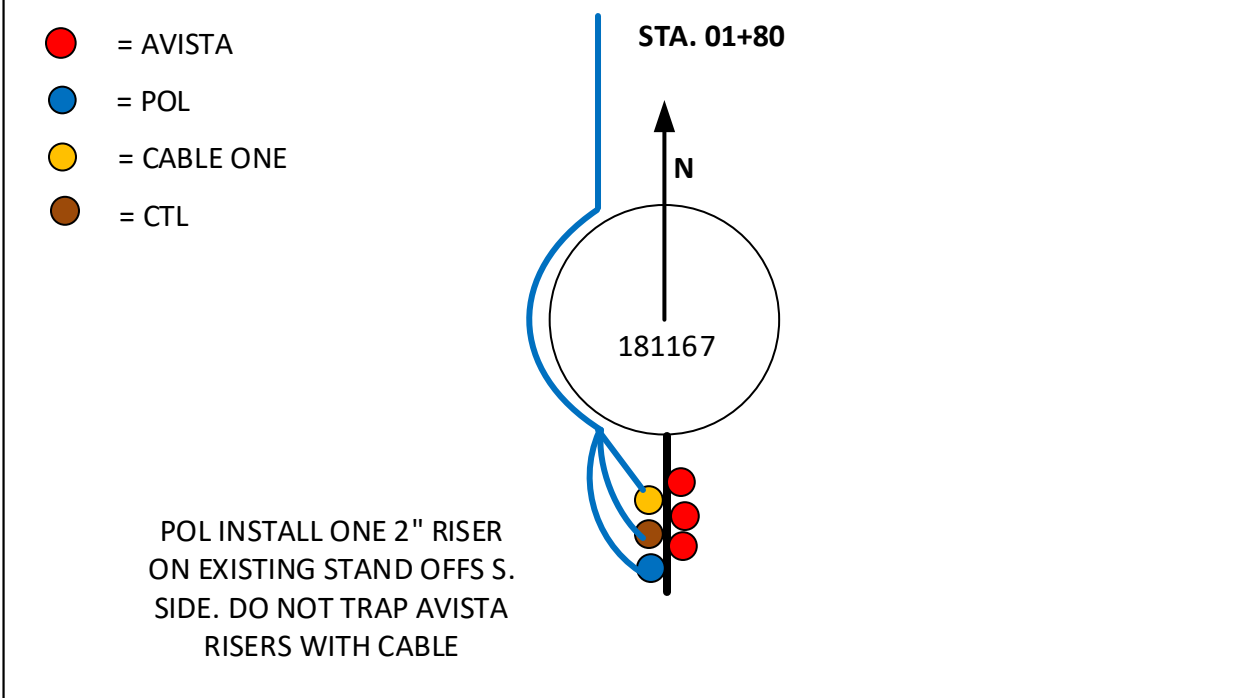


00+00			
POLE #	115403		
POLE CLASS	CL-1 50'		
ATTACHMENTS	HOA	POSITION	MISC
NEUTRAL	30'5"	RS	
LIGHT	28'2"		
C 1	26'	RS	
CTL	25'	RS	
POL	24'	RS	

POL INSTALL DG AND ANCHOR N. SIDE WITH 8' LEAD

01+80			
POLE #	181167		
POLE CLASS	CL-1 55'		
ATTACHMENTS	HOA	POSITION	MISC
NEUTRAL	33'6"	RS	
C 1	29'	RS	
CTL	28'	RS	
CTL	27'	RS	
Proposed POL	26'	RS	

POL INSTALL DG AND ANCHOR S. SIDE WITH 10' LEAD



APPROVED
By Kristin Nelson at 10:33 am, Apr 30, 2019

Drawing Name: Port of Lewiston		Drawn By: Ron Glessner 04-05-18	
RED LION LEWISTON			
SIZE	FSCM NO	DWG NO	REV
SCALE		SHEET 3	

REV.	REVISED	04-18-19	RG
REV.	DESCRIPTION	DATE	BY
REV.	DESCRIPTION	DATE	BY
REV.	DESCRIPTION	DATE	BY
REV.	DESCRIPTION	DATE	BY

Contact Information		State: ID County: Nez Perce City: Lewiston	
Port of Lewiston Dave Doeringsfeld 208-743-5531 Outside Plant Maintenance, llc Ron Glessner 208-661-5648		Section: Township: Range: Legal:	

