

AVISTA	#
DIST. POLES	39
TXM. POLES	0
CONDUITS	0
ANCHORS	0
MGN'S	17

CONTACTS:

AVISTA:  
TODD ELLSWORTH -509-495-2773

CABLE ONE:  
TOM DONOHUE – 208-791-5032

X O COMMUNICATIONS:  
STEVE STYERN – 509-444-8547

CENTURY LINK:  
RICK HARMS – 509-235-3349

Project begins at Avista pole # 144295 at 1520 14<sup>th</sup> st in Lewiston Id. Proceeding south to Avista pole #405638 at the intersection of 14<sup>th</sup> and 16<sup>th</sup> street. Then proceeding west to Avista pole #143980 at the intersection of 7<sup>th</sup> and 16<sup>th</sup> street. Then proceeding south on 7<sup>th</sup> street to Avista pole 144047. Then proceed east to Avista pole at 821 21<sup>st</sup> Street.

<b>Drawing Name:Port of Lewiston</b>		Drawn By: Ron Glessner 06-28-18	
<b>821 21<sup>st</sup> STREET</b>			
SIZE	FSCM NO	DWG NO	REV
SCALE		SHEET 1	

	REVISED	07-23-18	RG
REV.	DESCRIPTION	DATE	BY
REV.	DESCRIPTION	DATE	BY
REV.	DESCRIPTION	DATE	BY
REV.	DESCRIPTION	DATE	BY

Contact Information

Port of Lewiston  
Dave Doeringsfeld  
208-743-5531  
Outside Plant Maintenance, llc  
Ron Glessner 208-661-5648

State: ID  
County: Nez Perce  
City: Lewiston

Section:  
Township:  
Range:  
Legal:



GENERAL CONSTRUCTION NOTES

CONTRACTOR IS RESPONSIBLE FOR ALL PERMITS EXCEPT STATE HWY., COUNTY ROAD,RAILROAD OR WATER CROSSINGS.

RESTORATION OF ALL RIGHT OF WAY GROUND WILL BE RESTORED TO ORIGINAL CONDITION OR BETTER.

**CONTRACTOR WILL COORDINATE WITH OSP MANAGER 24 HRS. PRIOR TO BEGINNING CONSTRUCTION. CALL OSP MANAGER WHEN CONSTRUCTION IS COMPLETED. RON 208-661-5648**

OSP MANAGER WILL CONTACT BUILDING OWNER/TENANT 24 HRS. PRIOR TO BEGINNING CONSTRUCTION TO COORDINATE ACCESS TO BUILDINGS.

CONTRACTOR IS RESPONSIBLE FOR CALLING LOCATES AND IS RESPONSIBLE FOR REPAIR AND RESTORATION OF DAMAGED UTILITIES.

FOLLOW ALL NESC CONSTRUCTION GUIDELINES.

CONTRACTOR WILL HAVE ON SITE THE APPROVED DRAWINGS FROM THE UTILITY AND OR STATE,COUNTY,CITY,RAILROAD.

CONTRACTOR WILL PROVIDE CONDUIT , HAND HOLES , ANCHORS, AERIAL HARDWARE , LOCATE WIRE

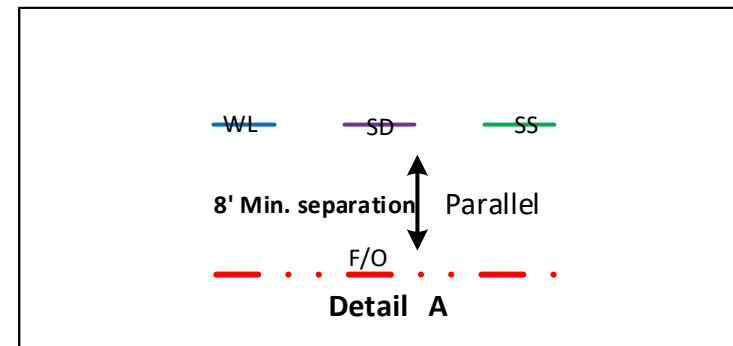
PORT OF LEWISTON (POL) WILL PROVIDE , FIBER OPTIC CABLE , AERIAL MARKERS , AND LINE ROUTE MARKERS.

FIBER CONSTRUCTION TOTAL	
6065'	AERIAL 48 STRAND F.O.CABLE
729'	Buried 48 STRAND F.O.CABLE
461'	1½" HDPE CONDUIT
1	2" SCHEDULE 40 RISER
8	NEW ANCHOR
38	AERIAL MARKER
2	BURIED MARKER
0	PUPI ARM
1	EXTENSION ARM
1	NEW HAND HOLE

**ABBREVIATIONS:**

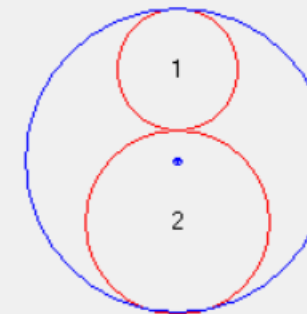
TIP	TOP INSIDE POSITION
TOP	TOP OUTSIDE POSITION
BIP	BOTTOM INSIDE POSITION
BOP	BOTTOM OUTSIDE POSTION
EA	EXTENSION ARM
PEA	PLACE EXTENSION ARM
RS	ROAD SIDE
FS	FIELD SIDE
DE	DEAD END
HOA	HEIGHT OF ATTACHMENT

	CULVERT
	DIRECTIONAL BORE
	AERIAL CABLE
	BURIED CABLE
	NEW ANCHOR
	SIDEWALK ANCHOR
	EXISTING ANCHOR
	OVERHEAD GUY
	ATTACH TO POLE GROUND
	FIBER SLACK LOOP
	JOINT USE POLE
	CABLE CHANGE
	BURIED ROUTE MARKER
	EXISTING HAND HOLE
	NEW HAND HOLE



Cable Bundle Plot

1 = 5/16"11.2mEHS  
2 = ORF-0-048-CN  
Bundle = 0.792 in  
WEIGHT = .054LB / FT



Drawing Name:Port of Lewiston	Drawn By:Ron Glessner 06-28-18				REVISED	07-23-18	RG	Contact Information  Port of Lewiston Dave Doeringsfeld 208-743-5531 Outside Plant Maintenance,llc Ron Glessner208-661-5648	State:ID. County:Nez Perce City: Lewiston
	<b>821 21<sup>st</sup> STREET</b>				REV.	DESCRIPTION	DATE		
	SIZE	FSCM NO	DWG NO	REV	REV.	DESCRIPTION	DATE	BY	Section: Township: Range: Legal:
	SCALE	No scale		SHEET 2	REV.	DESCRIPTION	DATE	BY	



09+72		12902	
POLE #	144194		
POLE CLASS	CL-3 45'		
ATTACHMENTS	HOA	POSITION	MISC
NEUTRAL	29'10"	RS	
LIGHT	24'8"		
Secondary	23'9"	FS	
X O	21'9"	RS	
Proposed POL	20'9"	RS	

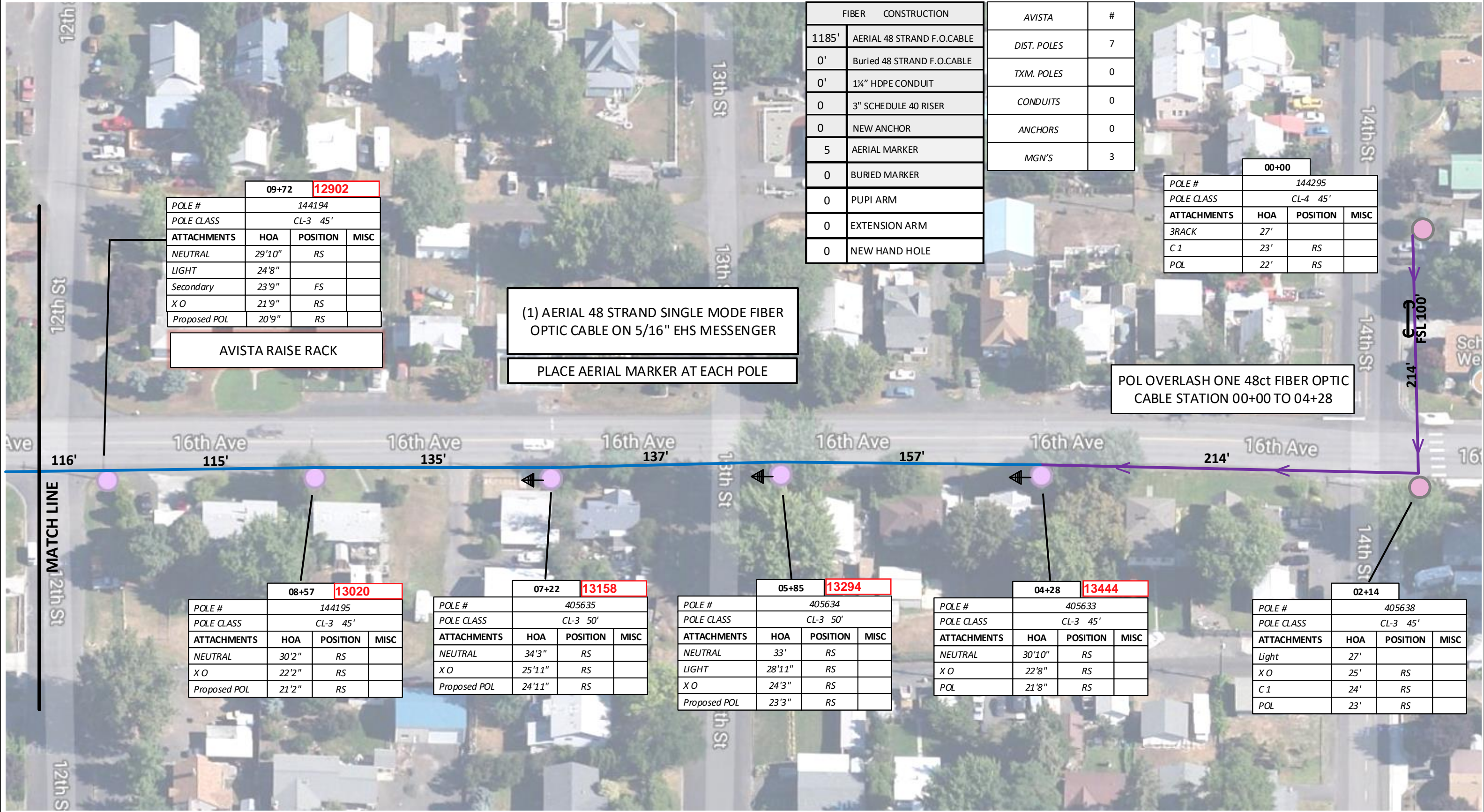
AVISTA RAISE RACK

(1) AERIAL 48 STRAND SINGLE MODE FIBER OPTIC CABLE ON 5/16" EHS MESSENGER  
PLACE AERIAL MARKER AT EACH POLE

FIBER	CONSTRUCTION
1185'	AERIAL 48 STRAND F.O.CABLE
0'	Buried 48 STRAND F.O.CABLE
0'	1/4" HDPE CONDUIT
0	3" SCHEDULE 40 RISER
0	NEW ANCHOR
5	AERIAL MARKER
0	BURIED MARKER
0	PUPI ARM
0	EXTENSION ARM
0	NEW HAND HOLE

AVISTA	#
DIST. POLES	7
TXM. POLES	0
CONDUITS	0
ANCHORS	0
MGN'S	3

00+00			
POLE #	144295		
POLE CLASS	CL-4 45'		
ATTACHMENTS	HOA	POSITION	MISC
3RACK	27'		
C 1	23'	RS	
POL	22'	RS	



08+57		13020	
POLE #	144195		
POLE CLASS	CL-3 45'		
ATTACHMENTS	HOA	POSITION	MISC
NEUTRAL	30'2"	RS	
X O	22'2"	RS	
Proposed POL	21'2"	RS	

07+22		13158	
POLE #	405635		
POLE CLASS	CL-3 50'		
ATTACHMENTS	HOA	POSITION	MISC
NEUTRAL	34'3"	RS	
X O	25'11"	RS	
Proposed POL	24'11"	RS	

05+85		13294	
POLE #	405634		
POLE CLASS	CL-3 50'		
ATTACHMENTS	HOA	POSITION	MISC
NEUTRAL	33'	RS	
LIGHT	28'11"	RS	
X O	24'3"	RS	
Proposed POL	23'3"	RS	

04+28		13444	
POLE #	405633		
POLE CLASS	CL-3 45'		
ATTACHMENTS	HOA	POSITION	MISC
NEUTRAL	30'10"	RS	
X O	22'8"	RS	
POL	21'8"	RS	

02+14			
POLE #	405638		
POLE CLASS	CL-3 45'		
ATTACHMENTS	HOA	POSITION	MISC
Light	27'		
X O	25'	RS	
C 1	24'	RS	
POL	23'	RS	

Drawing Name: Port of Lewiston		Drawn By: Ron Glessner 06-28-18	
<b>821 21<sup>st</sup> STREET</b>			
SIZE	FSCM NO	DWG NO	REV
SCALE		SHEET 3	

REV.	REVISED	07-23-18	RG
REV.	DESCRIPTION	DATE	BY
REV.	DESCRIPTION	DATE	BY
REV.	DESCRIPTION	DATE	BY
REV.	DESCRIPTION	DATE	BY

Contact Information  
Port of Lewiston  
Dave Doeringsfeld  
208-743-5531  
Outside Plant Maintenance, llc  
Ron Glessner 208-661-5648

State: ID  
County: Nez Perce  
City: Lewiston  
Section:  
Township:  
Range:  
Legal:



(1) AERIAL 48 STRAND SINGLE MODE FIBER OPTIC CABLE ON 5/16" EHS MESSENGER

PLACE AERIAL MARKER AT EACH POLE

AVISTA	#	FIBER	CONSTRUCTION
DIST. POLES	6	1012'	AERIAL 48 STRAND F.O.CABLE
TXM. POLES	0	0'	Buried 48 STRAND F.O.CABLE
CONDUITS	0	0'	1 1/2" HDPE CONDUIT
ANCHORS	0	0	3" SCHEDULE 40 RISER
MGN'S	3	0	NEW ANCHOR
		6	AERIAL MARKER
		0	BURIED MARKER
		0	PUPI ARM
		0	EXTENSION ARM
		0	NEW HAND HOLE

	15+69	12308	
POLE #	405629		
POLE CLASS	CL-3 50'		
ATTACHMENTS	HOA	POSITION	MISC
3 RACK	32'2"		
Svc. Riser	31'4"		
X O	26'3"	RS	
Proposed POL	25'3"	RS	

	13+43	12532	
POLE #	405631		
POLE CLASS	CL-4 35'		
ATTACHMENTS	HOA	POSITION	MISC
NEUTRAL	28'4"	RS	
LIGHT	25'11"		
X O	24'3"	RS	
Proposed POL	23'3"	RS	

211' 16th Ave 170' 16th Ave 76' 16th Ave 150' 16th Ave 56' 16th Ave 199' 16th Ave

← FSL 150'

	17+39	12004	
POLE #	405628		
POLE CLASS	CL-1 55'		
ATTACHMENTS	HOA	POSITION	MISC
Secondary	32'4"		
Svc. Riser	28'7"		
LIGHT	26'11"		
X O	24'10"	RS	
St. Joseph	23'10"	RS	
Proposed POL	22'10"	RS	

	14+93	12382	
POLE #	405630		
POLE CLASS	CL-3 50'		
ATTACHMENTS	HOA	POSITION	MISC
Secondary	33'9"	RS	
X O	24'11"	RS	
Proposed POL	23'11"	RS	

X O Bond to Ground

	12+87	12588	
POLE #	405632		
POLE CLASS	CL-3 50'		
ATTACHMENTS	HOA	POSITION	MISC
NEUTRAL	31'3"	RS	
X O	25'5"	RS	
Proposed POL	24'5"	RS	

	10+88	12786	
POLE #	144193		
POLE CLASS	CL-3 45'		
ATTACHMENTS	HOA	POSITION	MISC
NEUTRAL	30'	RS	
X O	24'4"	RS	
Proposed POL	23'4"	RS	

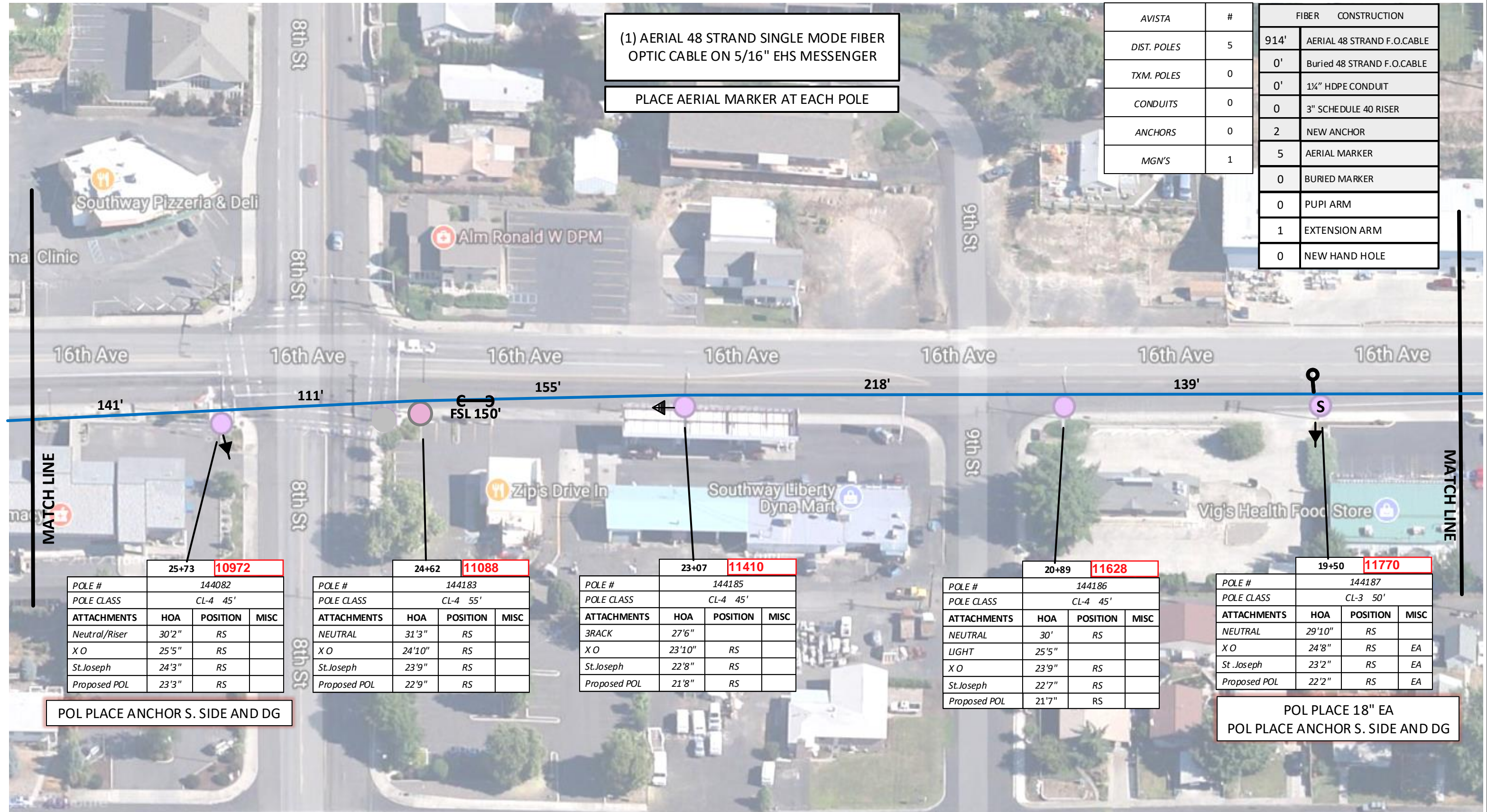
Drawing Name: Port of Lewiston		Drawn By: Ron Glessner 06-28-18	
<b>821 21<sup>st</sup> STREET</b>			
SIZE	FSCM NO	DWG NO	REV
SCALE		SHEET 4	

REV.	Revised	07-23-18	RG
REV.	DESCRIPTION	DATE	BY
REV.	DESCRIPTION	DATE	BY
REV.	DESCRIPTION	DATE	BY
REV.	DESCRIPTION	DATE	BY

Contact Information  
 Port of Lewiston  
 Dave Doeringsfeld  
 208-743-5531  
 Outside Plant Maintenance, LLC  
 Ron Glessner 208-661-5648

State: ID  
 County: Nez Perce  
 City: Lewiston  
 Section:  
 Township:  
 Range:  
 Legal:





(1) AERIAL 48 STRAND SINGLE MODE FIBER OPTIC CABLE ON 5/16" EHS MESSENGER

PLACE AERIAL MARKER AT EACH POLE

AVISTA	#	FIBER	CONSTRUCTION
		914'	AERIAL 48 STRAND F.O.CABLE
DIST. POLES	5	0'	Buried 48 STRAND F.O.CABLE
TXM. POLES	0	0'	1 1/4" HDPE CONDUIT
CONDUITS	0	0	3" SCHEDULE 40 RISER
ANCHORS	0	2	NEW ANCHOR
MGN'S	1	5	AERIAL MARKER
		0	BURIED MARKER
		0	PUPI ARM
		1	EXTENSION ARM
		0	NEW HAND HOLE

MATCH LINE

MATCH LINE

25+73		<b>10972</b>	
POLE #	144082		
POLE CLASS	CL-4 45'		
ATTACHMENTS	HOA	POSITION	MISC
Neutral/Riser	30'2"	RS	
X O	25'5"	RS	
St. Joseph	24'3"	RS	
Proposed POL	23'3"	RS	

24+62		<b>11088</b>	
POLE #	144183		
POLE CLASS	CL-4 55'		
ATTACHMENTS	HOA	POSITION	MISC
NEUTRAL	31'3"	RS	
X O	24'10"	RS	
St. Joseph	23'9"	RS	
Proposed POL	22'9"	RS	

23+07		<b>11410</b>	
POLE #	144185		
POLE CLASS	CL-4 45'		
ATTACHMENTS	HOA	POSITION	MISC
3RACK	27'6"		
X O	23'10"	RS	
St. Joseph	22'8"	RS	
Proposed POL	21'8"	RS	

20+89		<b>11628</b>	
POLE #	144186		
POLE CLASS	CL-4 45'		
ATTACHMENTS	HOA	POSITION	MISC
NEUTRAL	30'	RS	
LIGHT	25'5"		
X O	23'9"	RS	
St. Joseph	22'7"	RS	
Proposed POL	21'7"	RS	

19+50		<b>11770</b>	
POLE #	144187		
POLE CLASS	CL-3 50'		
ATTACHMENTS	HOA	POSITION	MISC
NEUTRAL	29'10"	RS	
X O	24'8"	RS	EA
St. Joseph	23'2"	RS	EA
Proposed POL	22'2"	RS	EA

POL PLACE ANCHOR S. SIDE AND DG

POL PLACE 18" EA  
POL PLACE ANCHOR S. SIDE AND DG

Drawing Name: Port of Lewiston		Drawn By: Ron Glessner 06-28-18	
<b>821 21<sup>st</sup> STREET</b>			
SIZE	FSCM NO	DWG NO	REV
SCALE		SHEET 5	

REV.	REVISED	07-23-18	RG
REV.	DESCRIPTION	DATE	BY
REV.	DESCRIPTION	DATE	BY
REV.	DESCRIPTION	DATE	BY
REV.	DESCRIPTION	DATE	BY

Contact Information  
  
Port of Lewiston  
Dave Doeringsfeld  
208-743-5531  
Outside Plant Maintenance, LLC  
Ron Glessner 208-661-5648

State: ID  
County: Nez Perce  
City: Lewiston  
  
Section:  
Township:  
Range:  
Legal:



FIBER CONSTRUCTION		AVISTA	#
922'	AERIAL 48 STRAND F.O.CABLE	DIST. POLES	7
0'	Buried 48 STRAND F.O.CABLE	TXM. POLES	0
0'	1 1/4" HDPE CONDUIT	CONDUITS	0
0	3" SCHEDULE 40 RISER	ANCHORS	0
1	NEW ANCHOR	MGN'S	2
7	AERIAL MARKER		
0	BURIED MARKER		
0	PUPI ARM		
0	EXTENSION ARM		
0	NEW HAND HOLE		

29+51			
POLE #	143980		
POLE CLASS	CL-3 50'		
ATTACHMENTS	HOA	POSITION	MISC
NEUTRAL	27'11"	RS	
C 1	23'9"	RS	
X O	22'5"	RS	
St. Joseph	21'3"	RS	
Proposed POL	20'3"	RS	

01+12			
POLE #	143981		
POLE CLASS	CL-4 45'		
ATTACHMENTS	HOA	POSITION	MISC
NEUTRAL	29'	RS	
C 1	25'	RS	23'7"
X O	24'2"	RS	22'7"
St. Joseph	22'7"	RS	21'7"
Proposed POL	20'7"	RS	

29+66			
POLE #	143982		
POLE CLASS	CL-4 40'		
ATTACHMENTS	HOA	POSITION	MISC
NEUTRAL	25'	RS	
C 1	21'2"	FS	
St. Joseph	20'	FS	
Proposed POL	19'	FS	

28+69 7150			
POLE #	144076		
POLE CLASS	CL-3 50'		
ATTACHMENTS	HOA	POSITION	MISC
NEUTRAL	29'11"	RS	
LIGHT	25'7"		
C 1	23'	RS	
X O	22'	RS	
St. Joseph	21'	RS	
Proposed POL	20'	RS	

27+14 10830			
POLE #	144080		
POLE CLASS	CL-3 45'		
ATTACHMENTS	HOA	POSITION	MISC
3RACK	26'2"		
X O	20'11"	RS	
St. Joseph	19'11"	RS	
Proposed POL	18'11"	RS	

31+15 7370			
POLE #	143983		
POLE CLASS	CL-4 40'		
ATTACHMENTS	HOA	POSITION	MISC
NEUTRAL	23'7"	RS	
C 1	19'5"	RS	
St. Joseph	18'1"	RS	
Proposed POL	17'1"	RS	

32+71 7526			
POLE #	143984		
POLE CLASS	CL-4 40'		
ATTACHMENTS	HOA	POSITION	MISC
NEUTRAL	25'4"	RS	
LIGHT	23'9"		
C 1	21'10"	RS	
CTL	20'10"	RS	
St. Joseph	20'	RS	
Proposed POL	19'	RS	

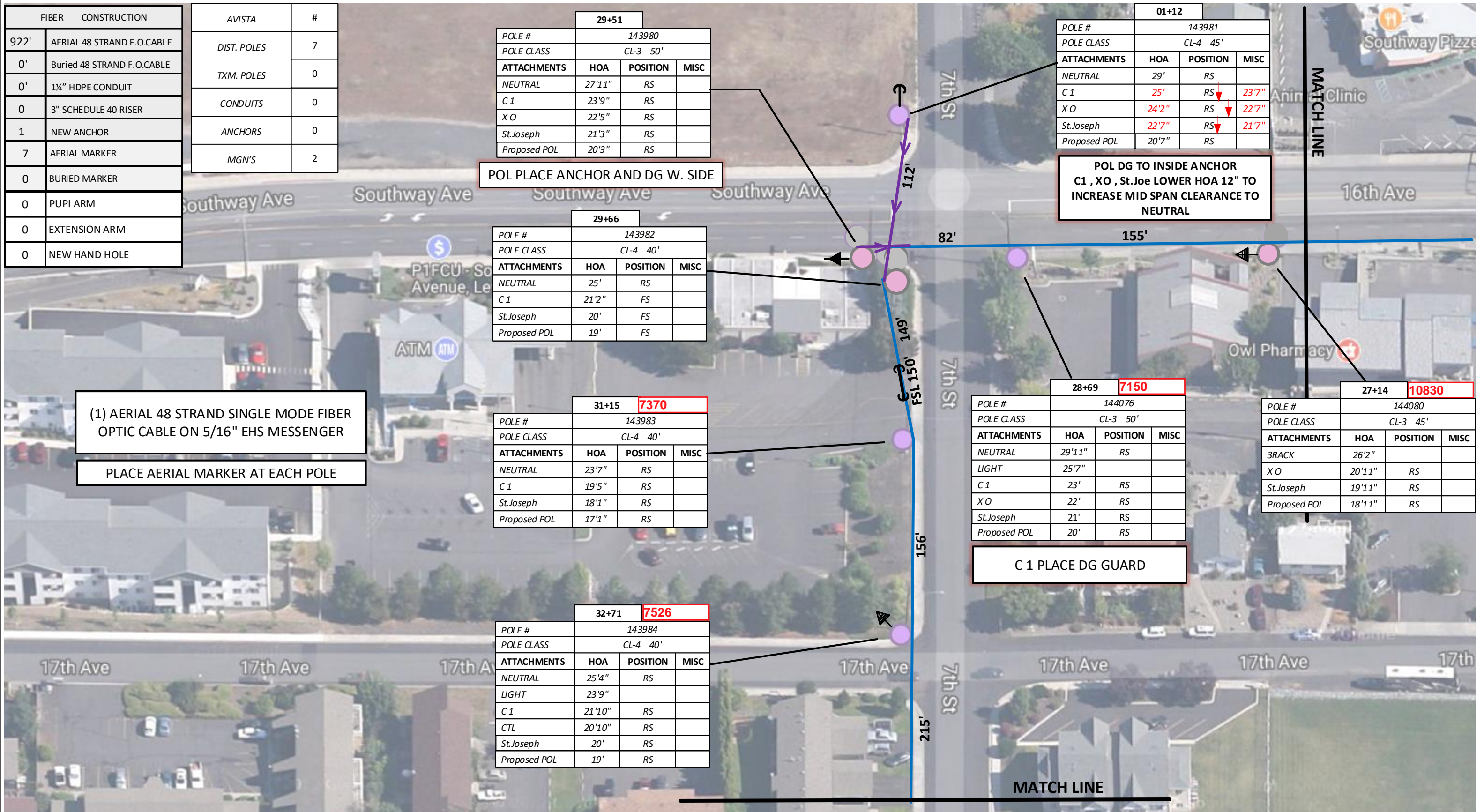
(1) AERIAL 48 STRAND SINGLE MODE FIBER OPTIC CABLE ON 5/16" EHS MESSENGER

PLACE AERIAL MARKER AT EACH POLE

POL PLACE ANCHOR AND DG W. SIDE

POL DG TO INSIDE ANCHOR C1, X O, St. Joe LOWER HOA 12" TO INCREASE MID SPAN CLEARANCE TO NEUTRAL

C 1 PLACE DG GUARD



Drawing Name: Port of Lewiston		Drawn By: Ron Glessner 06-28-18	
<b>821 21<sup>st</sup> STREET</b>			
SIZE	FSCM NO	DWG NO	REV
SCALE			SHEET 6

REV.	DESCRIPTION	DATE	BY
REV.	REVISED	07-23-18	RG
REV.	DESCRIPTION	DATE	BY
REV.	DESCRIPTION	DATE	BY
REV.	DESCRIPTION	DATE	BY
REV.	DESCRIPTION	DATE	BY

Contact Information	State: ID County: Nez Perce City: Lewiston
Port of Lewiston Dave Doeringsfeld 208-743-5531 Outside Plant Maintenance, llc Ron Glessner 208-661-5648	Section: Township: Range: Legal:



FIBER	CONSTRUCTION
685'	AERIAL 48 STRAND F.O.CABLE
0'	Buried 48 STRAND F.O.CABLE
0'	1 1/4" HDPE CONDUIT
0	3" SCHEDULE 40 RISER
2	NEW ANCHOR
5	AERIAL MARKER
0	BURIED MARKER
0	PUPI ARM
0	EXTENSION ARM
0	NEW HAND HOLE

AVISTA	#
DIST. POLES	4
TXM. POLES	0
CONDUITS	0
ANCHORS	0
MGN'S	1

34+86	7744
POLE #	143985
POLE CLASS	CL-4 45'
ATTACHMENTS	HOA POSITION MISC
NEUTRAL	30'2" RS
CTL	22' RS
St.Joseph	20'9" RS
Proposed POL	19'9" RS

36+46	7904
POLE #	NN
POLE CLASS	CL-5 25'
ATTACHMENTS	HOA POSITION MISC
C 1	20'2" RS
CTL	19' RS
St.Joseph	18' RS
Proposed POL	17' RS

36+99	7954
POLE #	143986
POLE CLASS	CL-4 50'
ATTACHMENTS	HOA POSITION MISC
3RACK	29'3" RS
LIGHT	25'8" RS
C 1	23'9" RS
CTL	21'9" RS
CTL	20'10" RS
St.Joseph	19'7" RS
Proposed POL	18'7" RS

38+59	8116
POLE #	144012
POLE CLASS	CL-4 45'
ATTACHMENTS	HOA POSITION MISC
NEUTRAL	28'7" RS
Svc. Riser	27'5" RS
C 1	21'8" RS
CTL	20'11" RS
CTL	20'1" RS
Proposed POL	19'1" RS

39+79	8236
POLE #	144014
POLE CLASS	CL-4 45'
ATTACHMENTS	HOA POSITION MISC
NEUTRAL	31'1" RS
LIGHT	28'2" RS
C 1	25'2" RS
CTL	23'10" RS
Proposed POL	22'10" RS

AVISTA REPAIR BROKEN GROUND  
POL PLACE ANCHOR W. SIDE  
POL AND CTL DG TO NEW  
ANCHOR

(1) AERIAL 48 STRAND SINGLE MODE FIBER  
OPTIC CABLE ON 5/16" EHS MESSENGER  
  
PLACE AERIAL MARKER AT EACH POLE

POL PLACE ANCHOR AND DG E. SIDE

Drawing Name: Port of Lewiston

Drawn By: Ron Glessner 06-28-18

**821 21<sup>st</sup> STREET**

SIZE	FSCM NO	DWG NO	REV
SCALE			SHEET 7

REV.	DESCRIPTION	DATE	BY
REV.	REVISED	07-23-18	RG
REV.	DESCRIPTION	DATE	BY
REV.	DESCRIPTION	DATE	BY
REV.	DESCRIPTION	DATE	BY
REV.	DESCRIPTION	DATE	BY

Contact Information

Port of Lewiston  
Dave Doeringsfeld  
208-743-5531  
Outside Plant Maintenance, LLC  
Ron Glessner 208-661-5648

State: ID  
County: Nez Perce  
City: Lewiston

Section:  
Township:  
Range:  
Legal:



FIBER	CONSTRUCTION	AVISTA	#
472'	AERIAL 48 STRAND F.O.CABLE	DIST. POLES	4
0'	Buried 48 STRAND F.O.CABLE	TXM. POLES	0
0'	1 1/4" HDPE CONDUIT	CONDUITS	0
0	3" SCHEDULE 40 RISER	ANCHORS	0
0	NEW ANCHOR	MGN'S	4
4	AERIAL MARKER		
0	BURIED MARKER		
0	PUPI ARM		
0	EXTENSION ARM		
0	NEW HAND HOLE		

(1) AERIAL 48 STRAND SINGLE MODE FIBER OPTIC CABLE ON 5/16" EHS MESSENGER

PLACE AERIAL MARKER AT EACH POLE

<b>42+21</b>		<b>8482</b>	
POLE #	144015		
POLE CLASS	CL-4 45'		
ATTACHMENTS	HOA	POSITION	MISC
3RACK	28'3"		
C 1	24'6"	RS	
CTL	23'2"	RS	
Proposed POL	22'2"	RS	

<b>43+58</b>		<b>8630</b>	
POLE #	144016		
POLE CLASS	CL-4 45'		
ATTACHMENTS	HOA	POSITION	MISC
3RACK	27'6"		
LIGHT	24'11"		
C 1	23'4"	RS	
CTL	22'4"	RS	
Proposed POL	21'4"	RS	

<b>45+41</b>		<b>8802</b>	
POLE #	144040		
POLE CLASS	CL-4 40'		
ATTACHMENTS	HOA	POSITION	MISC
NEUTRAL	25'5"	RS	
C 1	21'5"	RS	
CTL	20'2"	RS	
Proposed POL	19'2"	RS	

<b>46+93</b>		<b>8938</b>	
POLE #	144041		
POLE CLASS	CL-4 45'		
ATTACHMENTS	HOA	POSITION	MISC
3 RACK	28'1"		
LIGHT	25'5"	RS	
C 1	24'9"	RS	23'9"
CTL	23'7"	RS	22'7"
Proposed POL	21'7"	RS	

C1 & CTL TO CLOSE TO LIGHT  
LOWER HOA 12"

<b>Drawing Name: Port of Lewiston</b>		Drawn By: Ron Glessner 06-28-18	
<b>821 21<sup>st</sup> STREET</b>			
SIZE	FSCM NO	DWG NO	REV
SCALE		SHEET 8	

REV.	REVISED	07-23-18	RG
REV.	DESCRIPTION	DATE	BY
REV.	DESCRIPTION	DATE	BY
REV.	DESCRIPTION	DATE	BY
REV.	DESCRIPTION	DATE	BY

Contact Information

Port of Lewiston  
Dave Doeringsfeld  
208-743-5531  
Outside Plant Maintenance, LLC  
Ron Glessner 208-661-5648

State: ID  
County: Nez Perce  
City: Lewiston

Section:  
Township:  
Range:  
Legal:





48+40	9104		
POLE #	144046		
POLE CLASS	CL-3 45'		
ATTACHMENTS	HOA	POSITION	MISC
3RACK DL	26'11"		
C 1	23'6"	RS	
CTL	20'5"	RS	
Proposed POL	18'5"	RS	

49+96	9426		
POLE #	144047		
POLE CLASS	CL-3 50'		
ATTACHMENTS	HOA	POSITION	MISC
NEUTRAL	30'5"	RS	
Secondary DL	28'4"		
C 1	24'8"	RS	
CTL	23'3"	RS	
Proposed POL	21'7"	RS	

51+84	9634		
POLE #	144049		
POLE CLASS	CL-3 50'		
ATTACHMENTS	HOA	POSITION	MISC
NEUTRAL	32'2"	RS	
LIGHT	24'9"		
C 1	22'11"	RS	
St.Joseph	20'8"	RS	
Proposed POL	19'8"	RS	

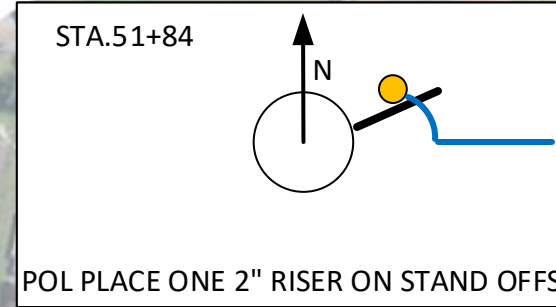
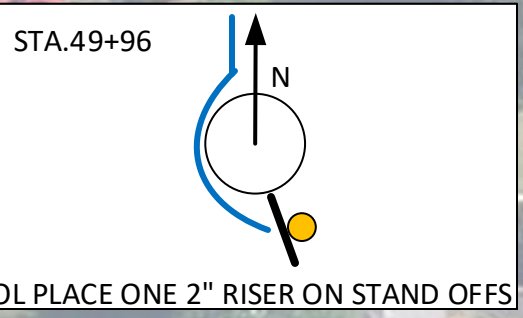
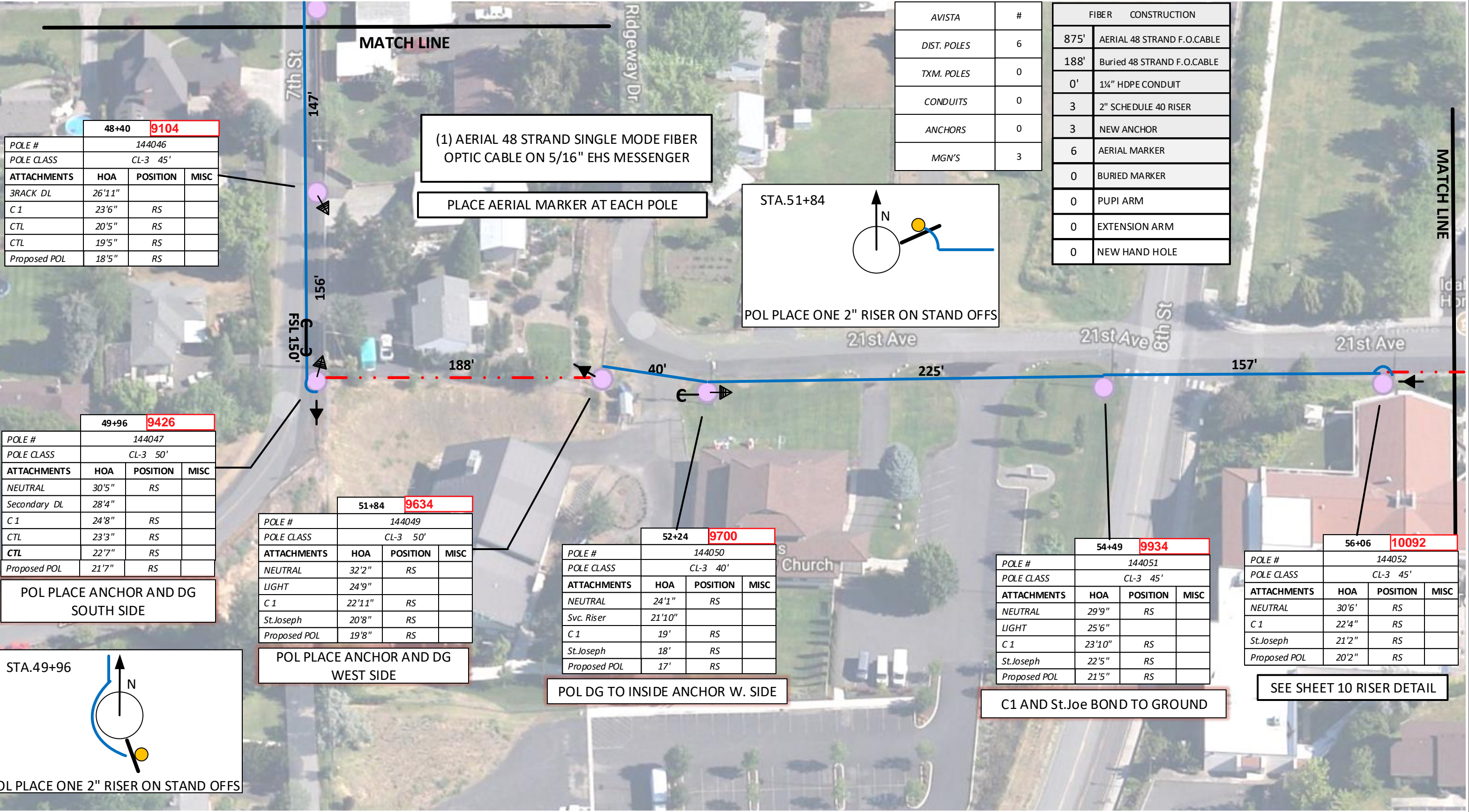
52+24	9700		
POLE #	144050		
POLE CLASS	CL-3 40'		
ATTACHMENTS	HOA	POSITION	MISC
NEUTRAL	24'1"	RS	
Svc. Riser	21'10"		
C 1	19'	RS	
St.Joseph	18'	RS	
Proposed POL	17'	RS	

54+49	9934		
POLE #	144051		
POLE CLASS	CL-3 45'		
ATTACHMENTS	HOA	POSITION	MISC
NEUTRAL	29'9"	RS	
LIGHT	25'6"		
C 1	23'10"	RS	
St.Joseph	22'5"	RS	
Proposed POL	21'5"	RS	

56+06	10092		
POLE #	144052		
POLE CLASS	CL-3 45'		
ATTACHMENTS	HOA	POSITION	MISC
NEUTRAL	30'6"	RS	
C 1	22'4"	RS	
St.Joseph	21'2"	RS	
Proposed POL	20'2"	RS	

AVISTA	#
DIST. POLES	6
TXM. POLES	0
CONDUITS	0
ANCHORS	0
MGN'S	3

FIBER CONSTRUCTION	
875'	AERIAL 48 STRAND F.O.CABLE
188'	Buried 48 STRAND F.O.CABLE
0'	1 1/2" HDPE CONDUIT
3	2" SCHEDULE 40 RISER
3	NEW ANCHOR
6	AERIAL MARKER
0	BURIED MARKER
0	PUPI ARM
0	EXTENSION ARM
0	NEW HAND HOLE



POL PLACE ANCHOR AND DG SOUTH SIDE

POL PLACE ANCHOR AND DG WEST SIDE

POL DG TO INSIDE ANCHOR W. SIDE

C1 AND St.Joe BOND TO GROUND

SEE SHEET 10 RISER DETAIL

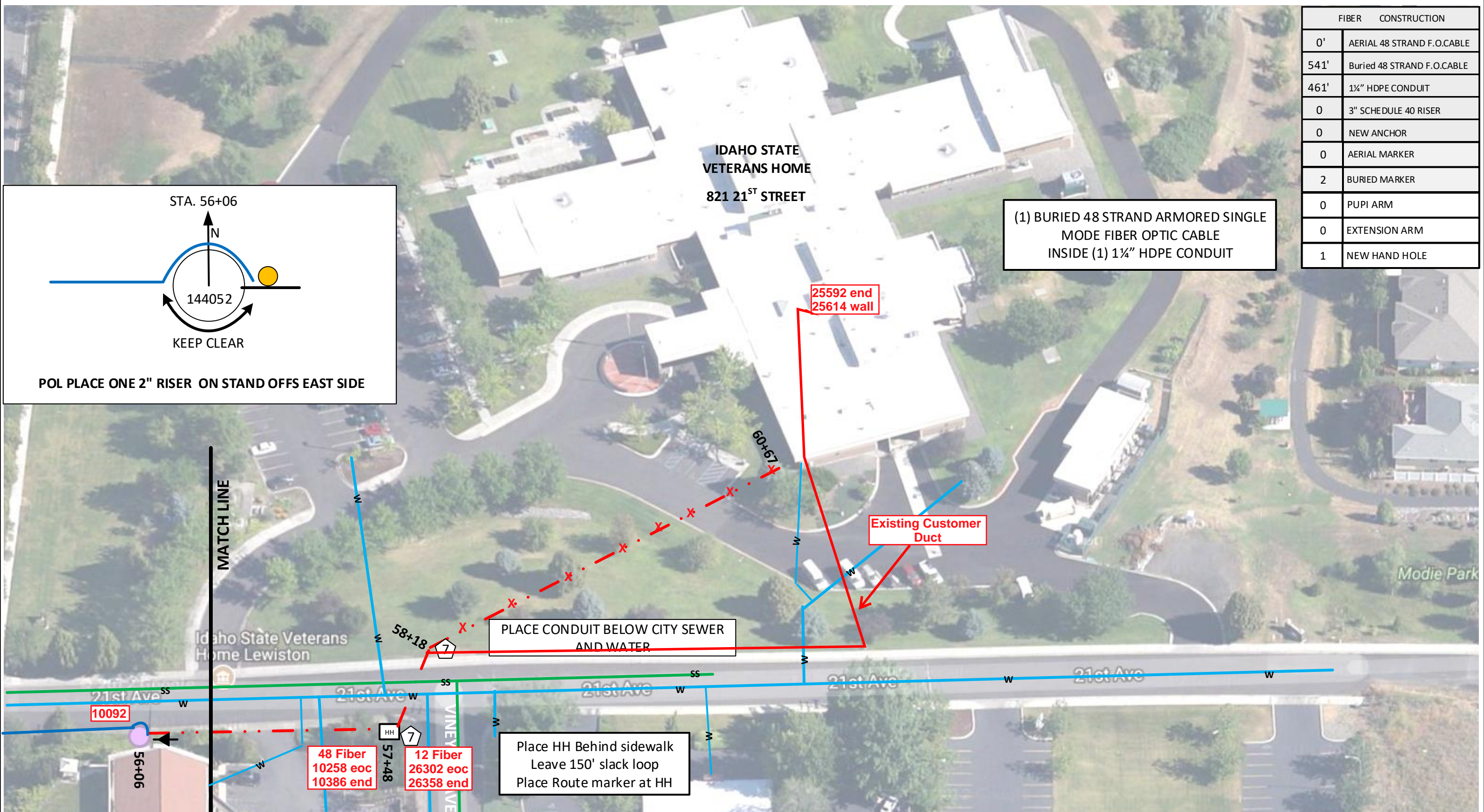
Drawing Name:Port of Lewiston		Drawn By: Ron Glessner 06-28-18	
<b>821 21<sup>st</sup> STREET</b>			
SIZE	FSCM NO	DWG NO	REV
SCALE		SHEET 9	

REV.	REVISED	07-23-18	RG
REV.	DESCRIPTION	DATE	BY
REV.	DESCRIPTION	DATE	BY
REV.	DESCRIPTION	DATE	BY
REV.	DESCRIPTION	DATE	BY

Contact Information  
 Port of Lewiston  
 Dave Doeringsfeld  
 208-743-5531  
 Outside Plant Maintenance, llc  
 Ron Glessner 208-661-5648

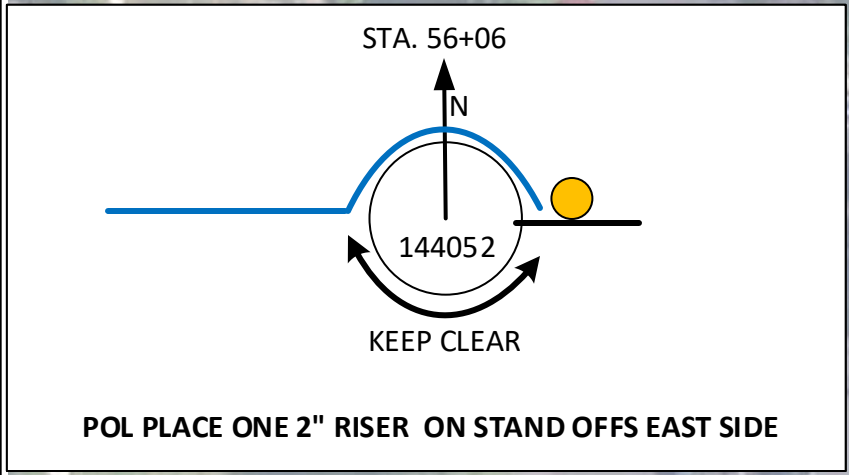
State: ID  
 County: Nez Perce  
 City: Lewiston  
 Section:  
 Township:  
 Range:  
 Legal:





FIBER	CONSTRUCTION
0'	AERIAL 48 STRAND F.O.CABLE
541'	Buried 48 STRAND F.O.CABLE
461'	1¼" HDPE CONDUIT
0	3" SCHEDULE 40 RISER
0	NEW ANCHOR
0	AERIAL MARKER
2	BURIED MARKER
0	PUPI ARM
0	EXTENSION ARM
1	NEW HAND HOLE

(1) BURIED 48 STRAND ARMORED SINGLE MODE FIBER OPTIC CABLE INSIDE (1) 1¼" HDPE CONDUIT



Drawing Name: Port of Lewiston

Drawn By: Ron Glessner 06-28-18

**821 21<sup>st</sup> STREET**

SIZE	FSCM NO	DWG NO	REV
SCALE		SHEET 10	

REV.	DESCRIPTION	DATE	BY
REV.	REVISED	07-23-18	RG
REV.	REVISED	08-23-18	RG
REV.	DESCRIPTION	DATE	BY
REV.	DESCRIPTION	DATE	BY
REV.	DESCRIPTION	DATE	BY

Contact Information

Port of Lewiston  
 Dave Doeringsfeld  
 208-743-5531  
 Outside Plant Maintenance, llc  
 Ron Glessner 208-661-5648

State: ID  
 County: Nez Perce  
 City: Lewiston

Section:  
 Township:  
 Range:  
 Legal:



Make Ready Summary	
Cable One	
Stationing	Description of work
28+69	Place DG Guard
46+93	Lower HOA 12"
54+49	Bond to ground
01+12	Lower HOA 12"

Make Ready Summary	
Century Link	
Stationing	Description of Work
38+59	Anchor and guy west
46+93	Lower HOA 12"

Make Ready Summary	
X O Communications	
Stationing	Description of Work
01+12	Lower HOA 12"
14+93	Bond to ground

Make Ready Summary	
Avista	
Stationing	Description of Work
09+72	Raise rack
38+59	Repair broken ground

Make Ready Summary	
St.Joseph	
Stationing	Description of Work
01+12	Lower HOA 12"
54+49	Bond to ground

Drawing Name:Port of Lewiston	06-28-18			
	<b>821 21<sup>st</sup> STREET</b>			
	SIZE	FSCM NO	DWG NO	REV
	SCALE		SHEET 11	

REV.	DESCRIPTION	DATE	BY

	REVISED	07-23-18	RG

Contact Information  Port of Lewiston Dave Doeringsfeld 208-743-5531 Outside Plant Maintenanc,llc Ron Glessner208-661-5648	State:ID County:Nez Perce City:Lewiston  Section: Township: Range: Legal:
--	--

