

PROJECT IS LOCATED AT LEWISTON AIRPORT  
IN LEWISTON. AT 406 BURRELL AVENUE

Drawing Name: Port of Lewiston		Fielded by Ron Glessner 03-02-18				Contact Information				State:ID County:Nez Perce City:Lewiston		
		<b>LWS AIRPORT</b>				Port of Lewiston Dave Doeringsfeld 208-743-5531 Outside Plant Maintenance, llc Ron Glessner208-661-5648				Section: Township: Range: Legal:		
SIZE	FSOMNO			REV	REV.	DESCRIPTION	DATE	BY	REV.	DESCRIPTION	DATE	BY
SCALE												
			SHEET 1	Cover								



**GENERAL CONSTRUCTION NOTES**

CONTRACTOR IS RESPONSIBLE FOR ALL PERMITS EXCEPT STATE HWY., COUNTY ROAD,RAILROAD OR WATER CROSSINGS.

RESTORATION OF ALL RIGHT OF WAY GROUND WILL BE RESTORED TO ORIGINAL CONDITION OR BETTER.

CONTRACTOR WILL COORDINATE WITH OSP MANAGER 24 HRS. PRIOR TO BEGINNING CONSTRUCTION.

OSP MANAGER WILL CONTACT BUILDING OWNER/TENANT 24 HRS. PRIOR TO BEGINNING CONSTRUCTION TO COORDINATE ACCESS TO BUILDINGS.

CONTRACTOR IS RESPONSIBLE FOR CALLING LOCATES AND IS RESPONSIBLE FOR REPAIR AND RESTORATION OF DAMAGED UTILITIES.

FOLLOW ALL NESC CONSTRUCTION GUIDELINES.

CONTRACTOR WILL HAVE ON SITE THE APPROVED DRAWINGS FROM THE UTILITY AND OR STATE,COUNTY,CITY,RAILROAD.

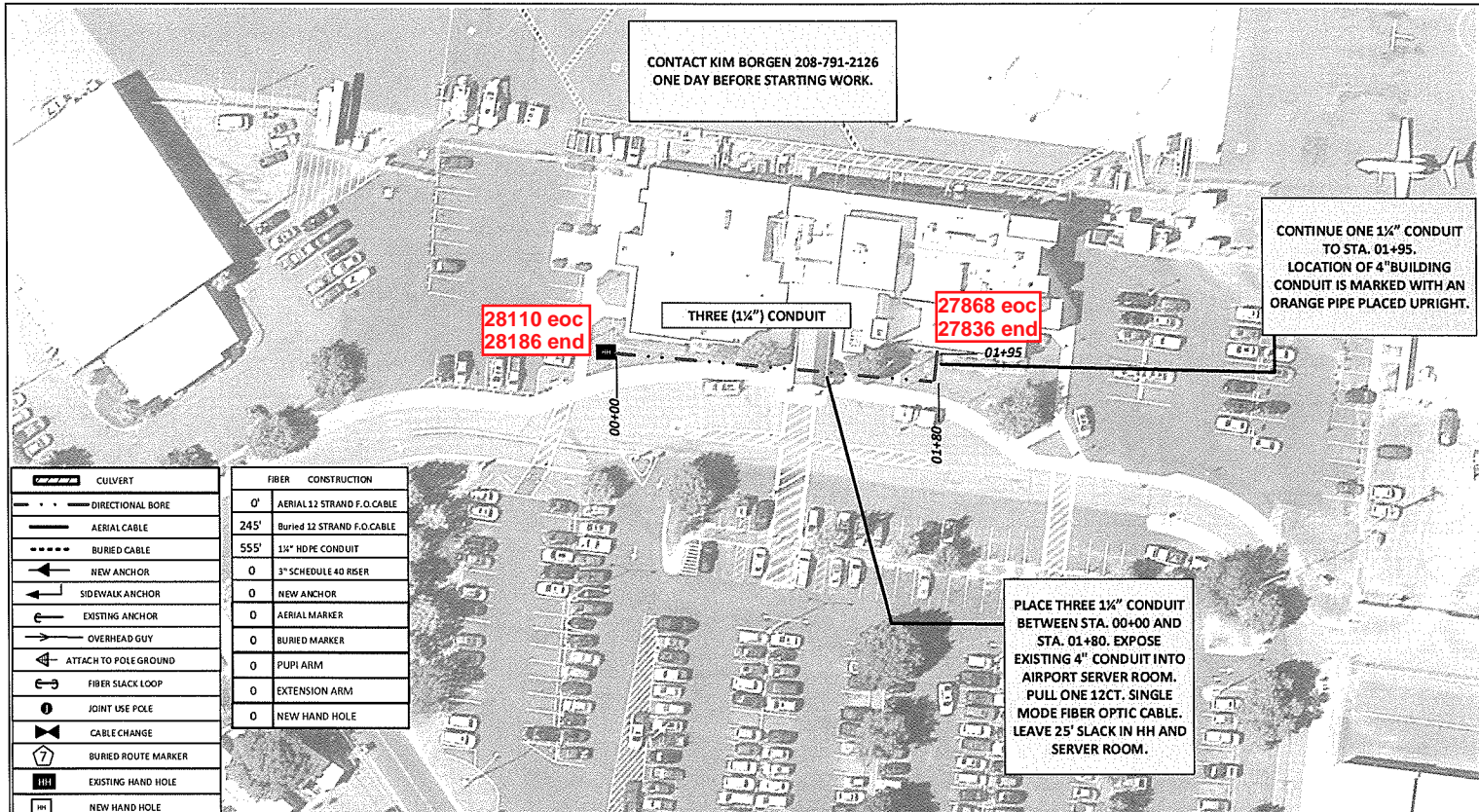
CONTRACTOR WILL PROVIDE CONDUIT , HAND HOLES , 12ct. SINGLE MODE FIBER, ANCHORS, AERIAL HARDWARE , LOCATE WIRE

PORT OF LEWISTON (POL) WILL PROVIDE , AERIAL MARKERS , AND LINE ROUTE MARKERS.

	CULVERT
	DIRECTIONAL BORE
	AERIAL CABLE
	BURIED CABLE
	NEW ANCHOR
	SIDEWALK ANCHOR
	EXISTING ANCHOR
	OVERHEAD GUY
	ATTACH TO POLE GROUND
	FIBER SLACK LOOP
	JOINT USE POLE
	CABLE CHANGE
	BURIED ROUTE MARKER
	EXISTING HAND HOLE
	NEW HAND HOLE

<b>Drawing Name:Port of Lewiston</b>		Drawn By:Ron Glessner 03-02-18				Contact Information		State:ID: County:Nez Perce City:Lewiston	
<b>LWS AIRPORT</b>				REV.	DESCRIPTION	DATE	BY	Port of Lewiston Dave Doeringsfeld 208-743-5531 Outside Plant Maintenance,lik Ron Glessner208-661-5648	
				REV.	DESCRIPTION	DATE	BY		
				REV.	DESCRIPTION	DATE	BY		
				REV.	DESCRIPTION	DATE	BY		
SIZE	FSCM NO	DWG NO	REV			Section:		Township:	
SCALE	No scale	SHEET 2				Range:		Legal:	





	CULVERT
	DIRECTIONAL BORE
	AERIAL CABLE
	BURIED CABLE
	NEW ANCHOR
	SIDEWALK ANCHOR
	EXISTING ANCHOR
	OVERHEAD GUY
	ATTACH TO POLE GROUND
	FIBER SLACK LOOP
	JOINT USE PICKLE
	CABLE CHANGE
	BURIED ROUTE MARKER
	EXISTING HAND HOLE
	NEW HAND HOLE

FIBER	CONSTRUCTION
0'	AERIAL 12 STRAND F.O. CABLE
245'	Buried 12 STRAND F.O. CABLE
555'	1 1/4" HDPE CONDUIT
0	3" SCHEDULE 40 RISER
0	NEW ANCHOR
0	AERIAL MARKER
0	BURIED MARKER
0	PUPPI ARM
0	EXTENSION ARM
0	NEW HAND HOLE

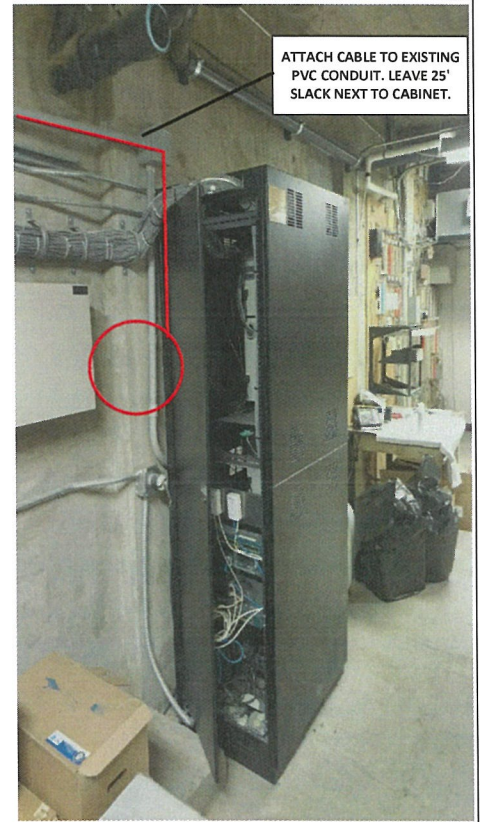
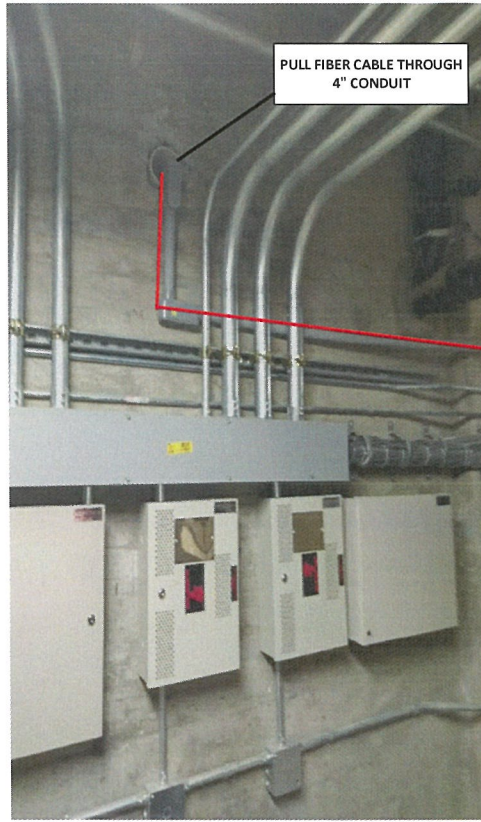
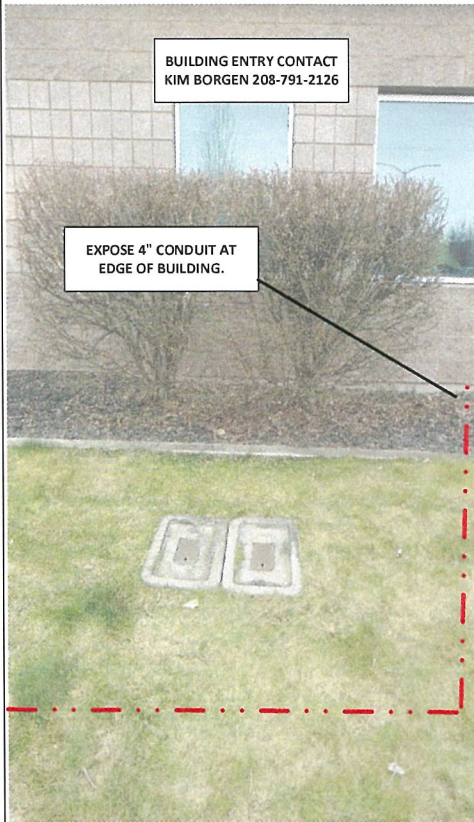
Drawing Name: Port of Lewiston			
Drawn By: Ron Glessner 03-02-18			
<b>LWS AIRPORT</b>			
SIZE	FSCH NO	DWG NO	REV
SCALE			SHEET 5

REV.	DESCRIPTION	DATE	BY

Contact Information		State: ID County: Nez Perce City: Lewiston	
Port of Lewiston Dave Doeringsfeld 208-743-5531 Outside Plant Maintenance, jlc Ron Glessner 208-661-5648		Section: Township: Range: Legal:	







Drawing Name: Port of Lewiston

Drawn By: Ron Glessner 03-01-18

**LWS AIRPORT**

REV.	DESCRIPTION	DATE	BY
REV.	DESCRIPTION	DATE	BY
REV.	DESCRIPTION	DATE	BY
REV.	DESCRIPTION	DATE	BY
REV.	DESCRIPTION	DATE	BY

Contact Information

Port of Lewiston  
Dave Doeringsfeld  
208-743-5531  
Outside Plant Maintenance, Jlc  
Ron Glessner 208-661-5648

State: ID  
County: Nez Perce  
City: Lewiston

Section:  
Township:  
Range:  
Legal:

