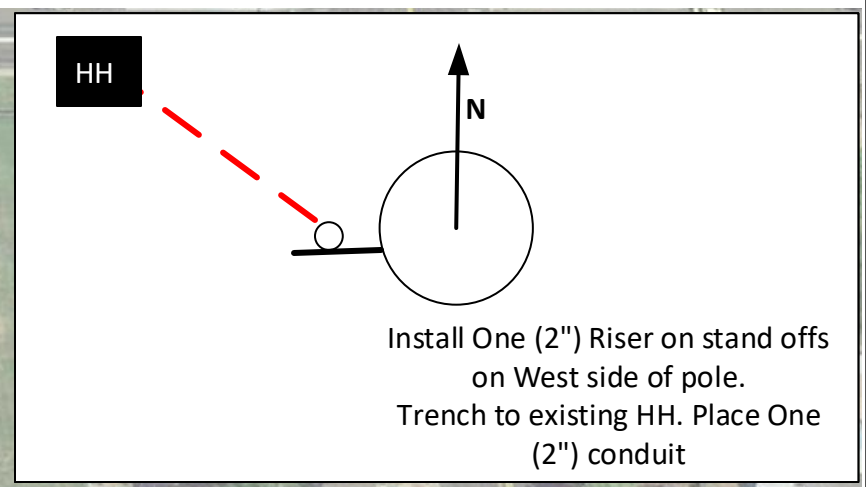


| | |
|--|-----------------------|
| | JOINT USE POLE |
| | EXISTING ANCHOR |
| | AERIAL CABLE |
| | BURIED CABLE |
| | NEW ANCHOR |
| | SIDEWALK ANCHOR |
| | FIBER SLACK LOOP |
| | OVERHEAD GUY |
| | ATTACH TO POLE GROUND |
| | CABLE CHANGE |
| | BURIED ROUTE MARKER |
| | HAND HOLE |

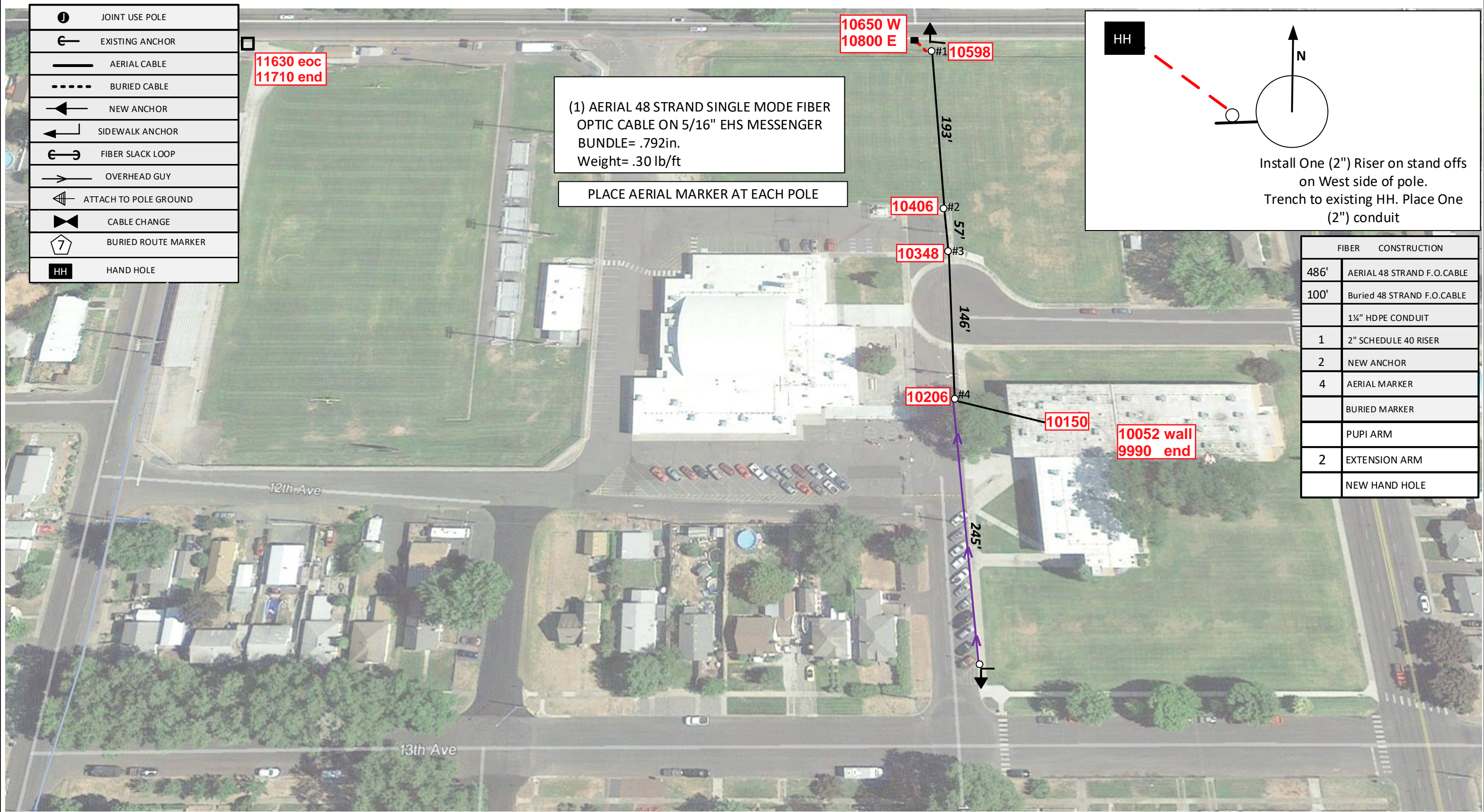
11630 eoc
11710 end

(1) AERIAL 48 STRAND SINGLE MODE FIBER OPTIC CABLE ON 5/16" EHS MESSENGER BUNDLE= .792in.
Weight= .30 lb/ft

PLACE AERIAL MARKER AT EACH POLE



| FIBER | CONSTRUCTION |
|-------|-----------------------------|
| 486' | AERIAL 48 STRAND F.O. CABLE |
| 100' | Buried 48 STRAND F.O. CABLE |
| | 1 1/4" HDPE CONDUIT |
| 1 | 2" SCHEDULE 40 RISER |
| 2 | NEW ANCHOR |
| 4 | AERIAL MARKER |
| | BURIED MARKER |
| | PUPI ARM |
| 2 | EXTENSION ARM |
| | NEW HAND HOLE |



Drawing Name: Port of Lewiston

Drawn By: Ron Glessner 04-07-2017

Jennifer Jr. High School

| | | | |
|-------|--------|---------|-----|
| SIZE | FSCMNO | DWG NO | REV |
| SCALE | | SHEET 1 | |

| REV. | DESCRIPTION | DATE | BY |
|------|-------------|------|----|
| | | | |
| | | | |
| | | | |
| | | | |
| | | | |

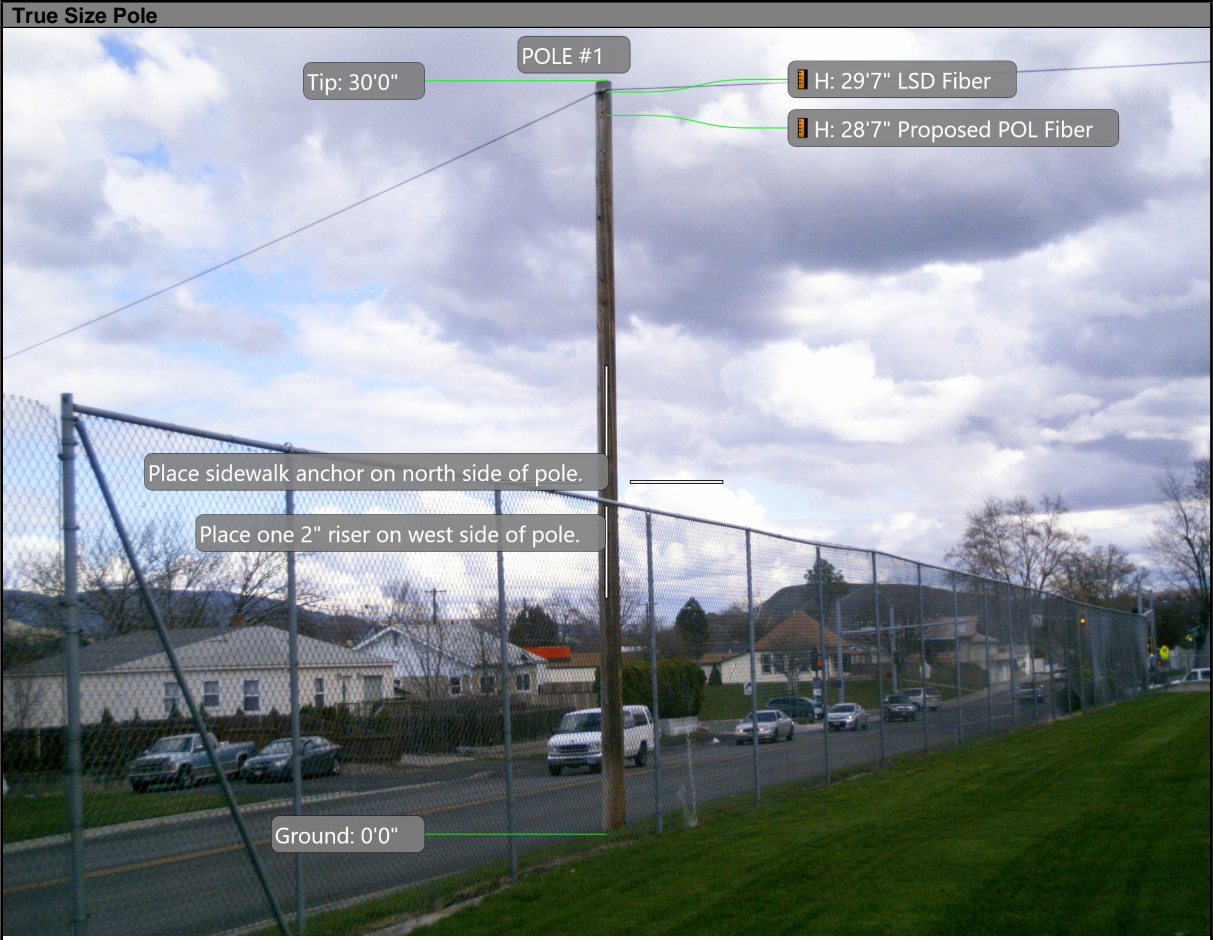
Contact Information

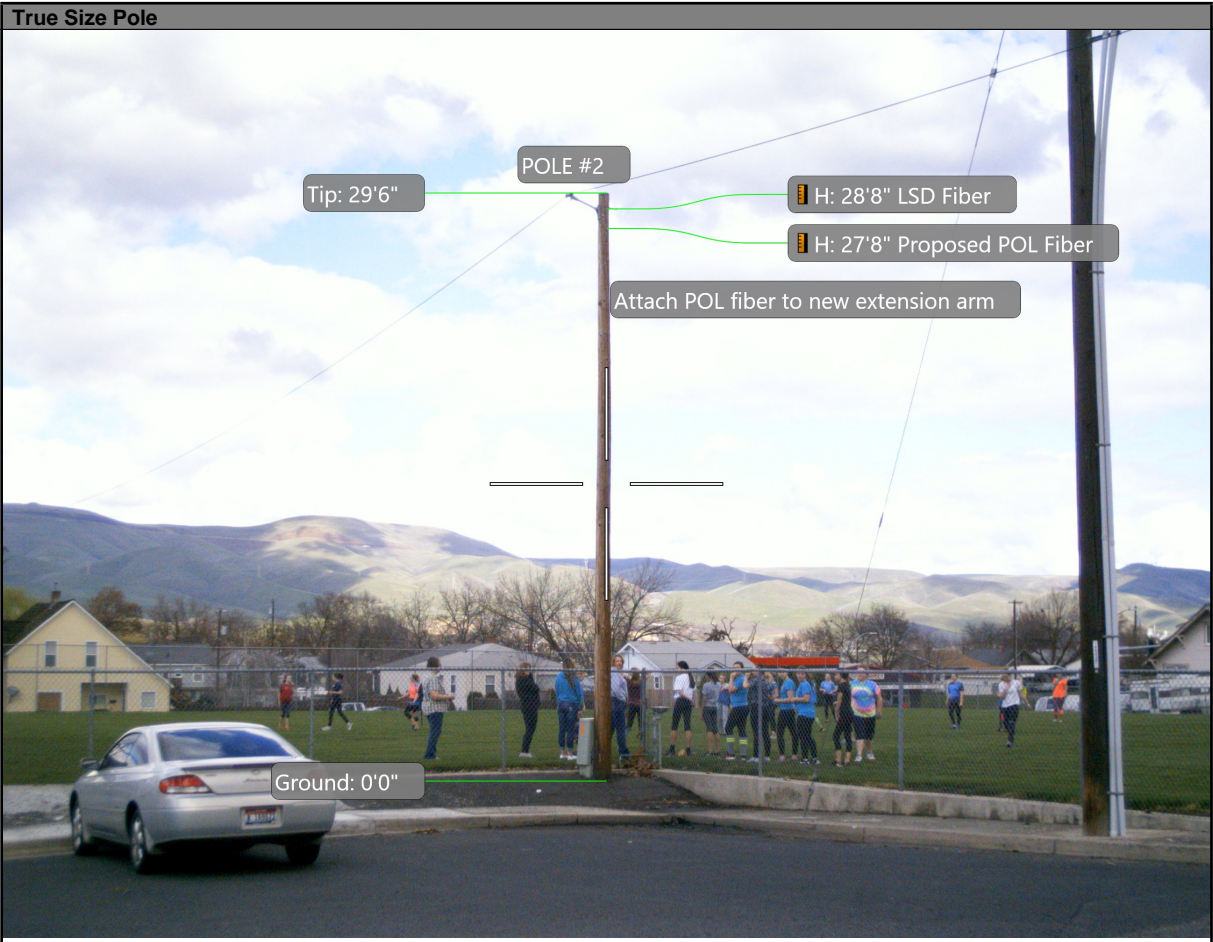
Port of Lewiston
Dave Doeringsfeld
208-743-5531
Outside Plant Maintenance, llc
Ron Glessner 208-661-5648

State: ID
County: Nez Perce
City: Lewiston

Section:
Township:
Range:
Legal:







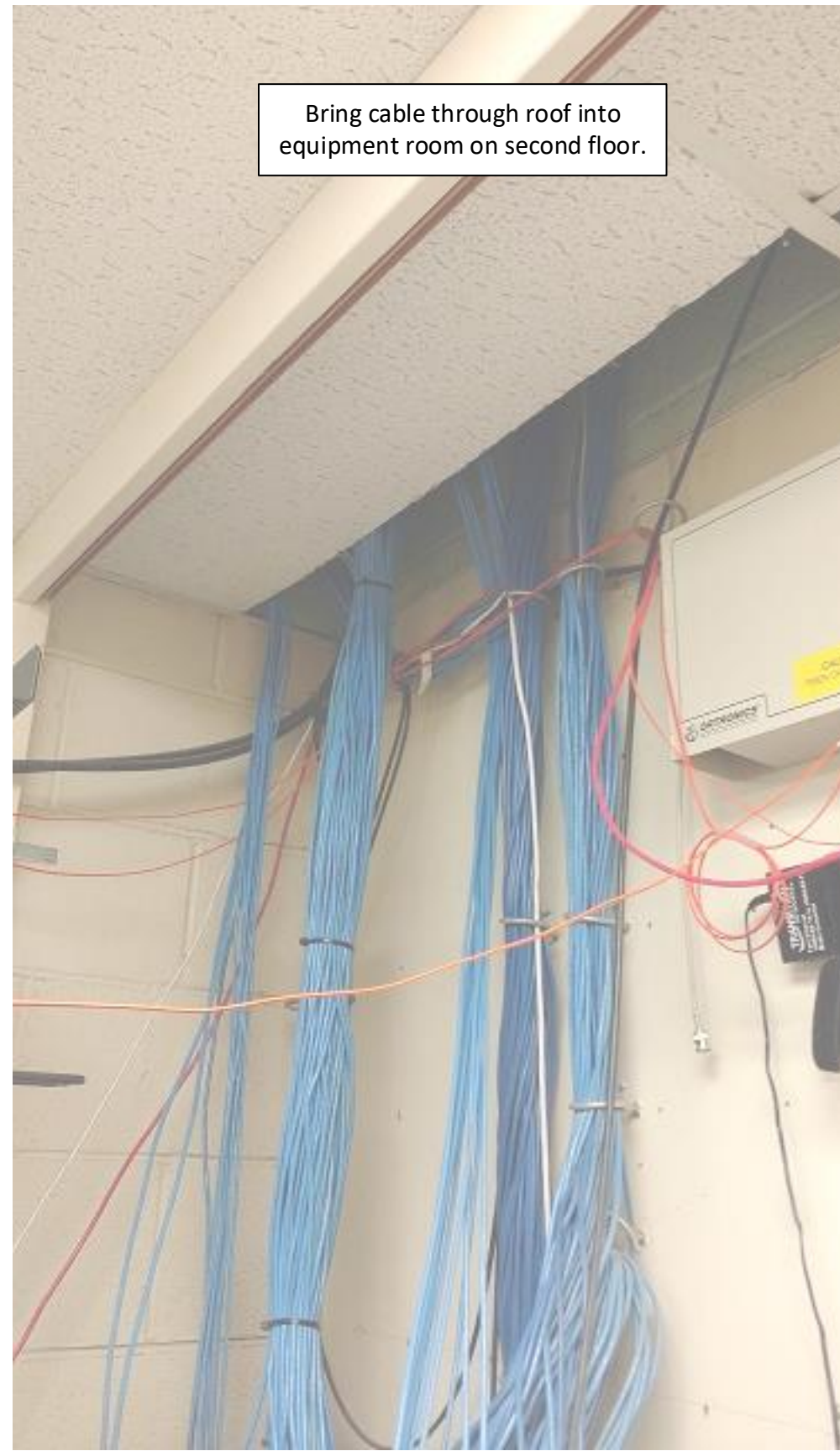




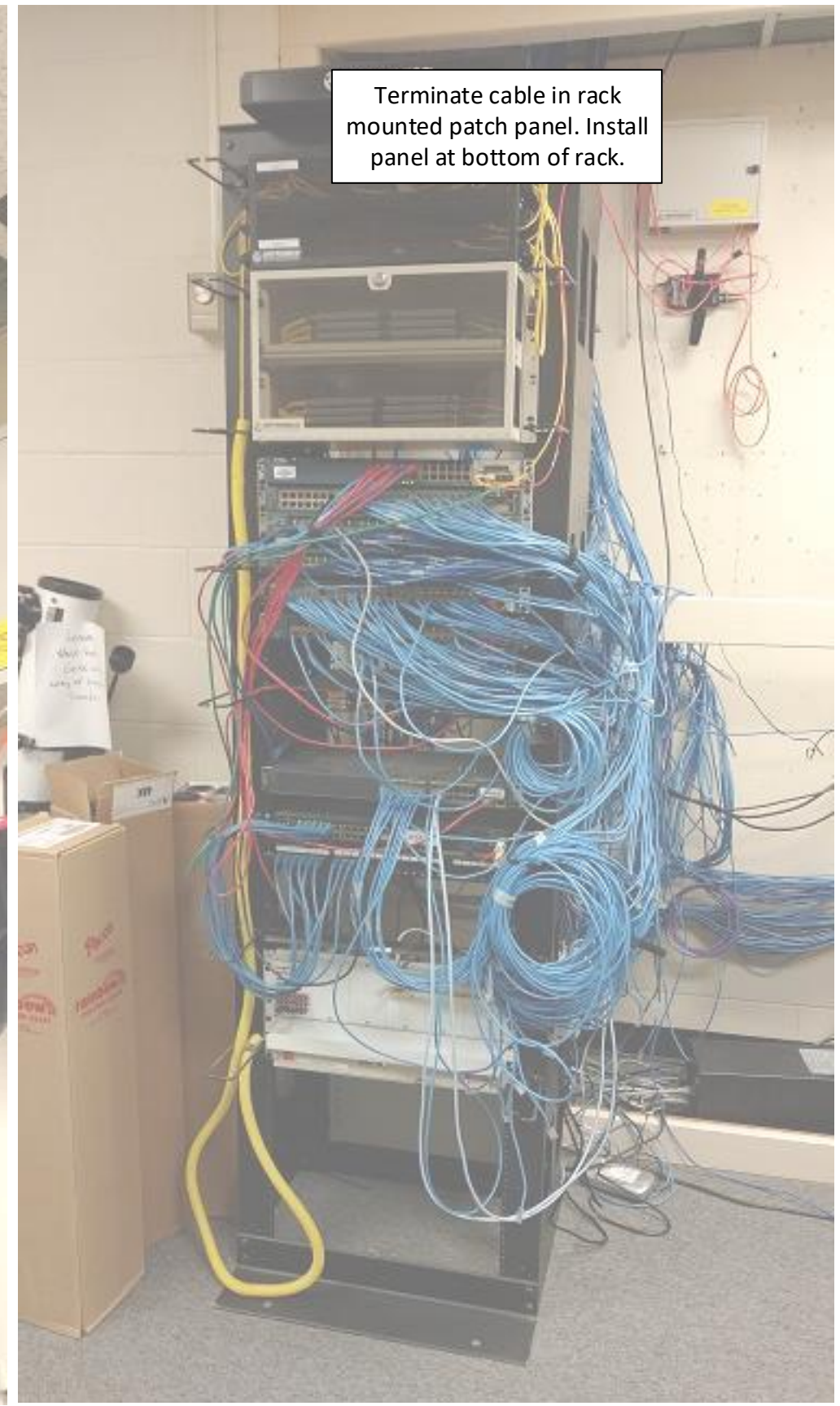
Attach cable to Existing Masts



Bring cable through roof into equipment room on second floor.



Terminate cable in rack mounted patch panel. Install panel at bottom of rack.



Drawing Name: Port of Lewiston

Drawn By: Ron Glessner 04-07-2017

Jennifer Jr. High School

| | | | |
|-------|--------|---------|-----|
| SIZE | FSCMNO | DWG NO | REV |
| SCALE | | SHEET 2 | |

| REV. | DESCRIPTION | DATE | BY |
|------|-------------|------|----|
| | | | |
| | | | |
| | | | |
| | | | |
| | | | |

Contact Information
 Port of Lewiston
 Dave Doeringsfeld
 208-743-5531
 Outside Plant Maintenance, llc
 Ron Glessner 208-661-5648

State: ID
 County: Nez Perce
 City: Lewiston
 Section:
 Township:
 Range:
 Legal:

