



	CULVERT
	DIRECTIONAL BORE
	EXISTING POL CABLE
	BURIED CABLE
	NEW ANCHOR
	SIDEWALK ANCHOR
	EXISTING ANCHOR
	OVERHEAD GUY
	ATTACH TO POLE GROUND
	FIBER SLACK LOOP
	JOINT USE POLE
	CABLE CHANGE
	BURIED ROUTE MARKER
	EXISTING HAND HOLE
	NEW HAND HOLE

PROJECT BEGINS AT EXISTING POL HH ON O'CONNOR RD. PROCEEDS BURIED 195' S.E. TO THE LIFE FLIGHT BUILDING AT THE LEWISTON AIRPORT.

Drawing Name: Port of Lewiston	Drawn By: Ron Glessner 6-08-17				REV.	DESCRIPTION	DATE	BY	Contact Information Port of Lewiston Dave Doeringsfeld 208-743-5531 Outside Plant Maintenance, LLC Ron Glessner 208-661-5648	State: ID County: Nez Perce City: Lewiston Section: Township: Range: Legal:
	LIFE FLIGHT				REV.	DESCRIPTION	DATE	BY		
	SEE	FS/CM NO	DWG NO	REV	REV.	DESCRIPTION	DATE	BY		
	SCALE		SHEET 1		REV.	DESCRIPTION	DATE	BY		





DIRECTIONAL DRILL FROM EXISTING POL HH ON O'CONNOR RD. TO LIFE FLIGHT BUILDING.

INSTALL (1) BURIED 48 STRAND ARMORED SINGLE MODE FIBER OPTIC CABLE INSIDE (1) 1 1/4" HDPE CONDUIT

5270 end
5356 eoc

5576 eoc
5718 end

ENTER EXTERIOR OF BUILDING ABOVE SUSPENDE CEILING. PULL FIBER CABLE 25' THROUGH CEILING TO SWITCH ROOM.

	CULVERT
	DIRECTIONAL BORE
	EXISTING POL CABLE
	BURIED CABLE
	NEW ANCHOR
	SIDEWALK ANCHOR
	EXISTING ANCHOR
	OVERHEAD GUY
	ATTACH TO POLE GROUND
	FIBER SLACK LOOP
	JOINT USE POLE
	CABLE CHANGE
	BURIED ROUTE MARKER
	EXISTING HAND HOLE
	NEW HAND HOLE

FIBER	CONSTRUCTION
0	AERIAL 48 STRAND F.O. CABLE Buried
295'	BURIE 48 STRAND F.O. CABLE
195'	1 1/4" HDPE CONDUIT
0	3" SCHEDULE 40 RISER
0	NEW ANCHOR
0	AERIAL MARKER
1	BURIED MARKER
0	PUPI ARM
0	EXTENSION ARM
0	NEW HAND HOLE

Drawing Name: Port of Lewiston

Drawn By: Ron Glessner 06-08-17

LIFE FLIGHT

SIZE	FSC/MNO	DWG NO	REV
SCALE			SHEET 2

REV.	DESCRIPTION	DATE	BY
REV.	DESCRIPTION	DATE	BY
REV.	DESCRIPTION	DATE	BY
REV.	DESCRIPTION	DATE	BY
REV.	DESCRIPTION	DATE	BY

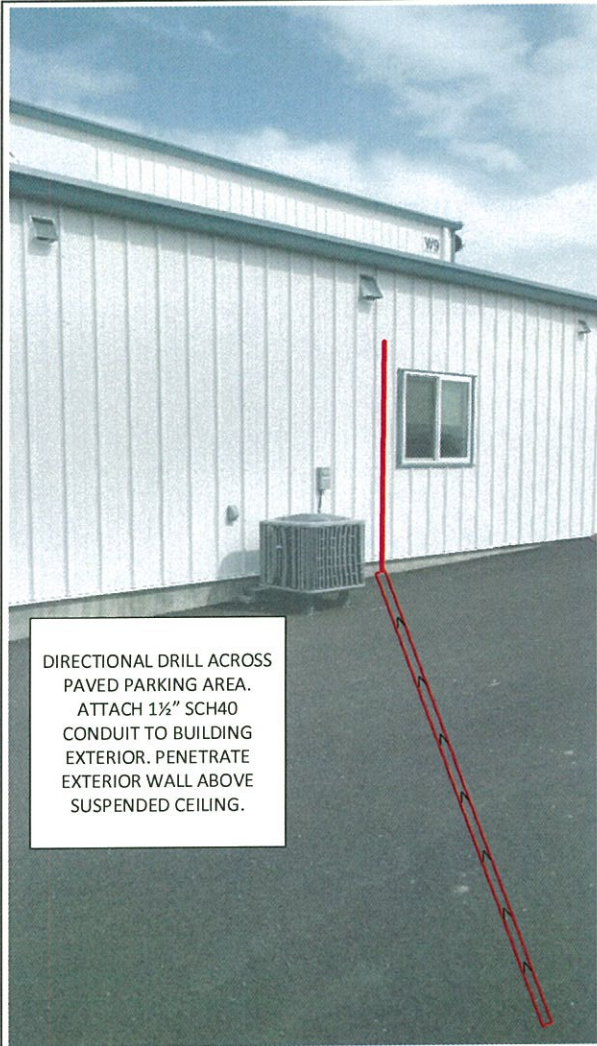
Contact Information

Port of Lewiston
Dave Doeringsfeld
208-743-5531
Outside Plant Maintenance, llc
Ron Glessner 208-661-5648

State: ID
County: Nez Perce
City: Lewiston

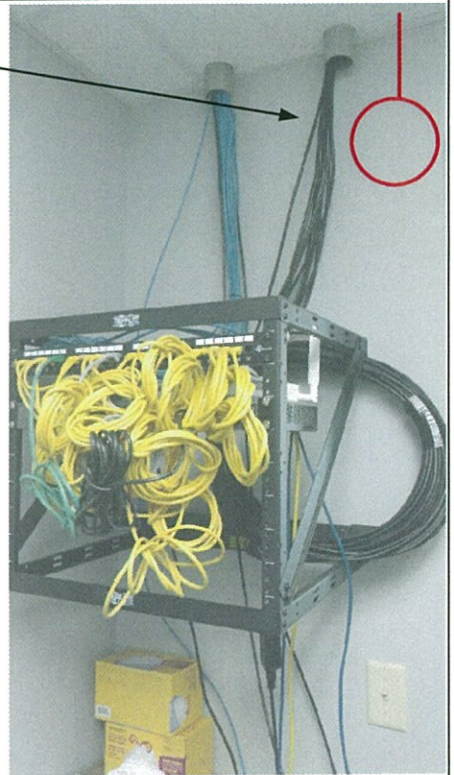
Section:
Township:
Range:
Legal:





BRING CABLE THROUGH SUSPENDED CEILING. LEAVE 25' SLACK LOOP

ROUTE FIBER CABLE ACROSS SUSPENDED CEILING



Drawing Name: Port of Lewiston	Drawn By: Ron Glessner 06-08-17				REV.	DESCRIPTION	DATE	BY	Contact Information	State: ID County: Nez Perce City: Lewiston
	LIFE FLIGHT									
	SIZE	FSC/MNO	DWG NO.	REV	REV.	DESCRIPTION	DATE	BY		
	SCALE			SHEET 3	REV.	DESCRIPTION	DATE	BY		

