

PROJECT LOCATION 18TH
STREET N. AND 5TH AVE.N
LEWISTON ID.

Drawing Name: Port of Lewiston	DRAWN BY: Ron Glessner 01-30-18								Contact Information	State:ID County:Nez Perce City:Lewiston	
	1903 5 th AVE N.										
		SIZE	FSCM NO		REV	REV.					Port of Lewiston Dave Doeringsfeld 208-743-5531 Outside Plant Maintenance, llc Ron Glessner208-661-5648
	SCALE			SHEET	Cover	REV.	DESCRIPTION	DATE	BY		
						REV.	DESCRIPTION	DATE	BY		



GENERAL CONSTRUCTION NOTES

CONTRACTOR IS RESPONSIBLE FOR ALL PERMITS EXCEPT STATE HWY., COUNTY ROAD,RAILROAD
OR WATER CROSSINGS.

RESTORATION OF ALL RIGHT OF WAY GROUND WILL BE RESTORED TO ORIGINAL CONDITION OR BETTER.

CONTRACTOR WILL COORDINATE WITH OSP MANAGER 24 HRS. PRIOR TO BEGINNING CONSTRUCTION.

OSP MANAGER WILL CONTACT BUILDING OWNER/TENANT 24 HRS. PRIOR TO
BEGINNING CONSTRUCTION TO COORDINATE ACCESS TO BUILDINGS.

CONTRACTOR IS RESPONSIBLE FOR CALLING LOCATES AND IS RESPONSIBLE
FOR REPAIR AND RESTORATION OF DAMAGED UTILITIES.

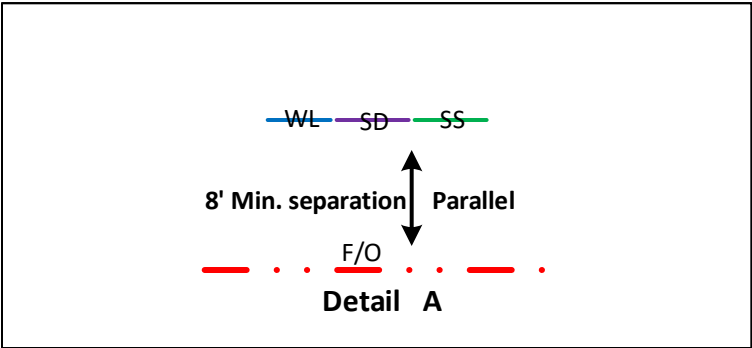
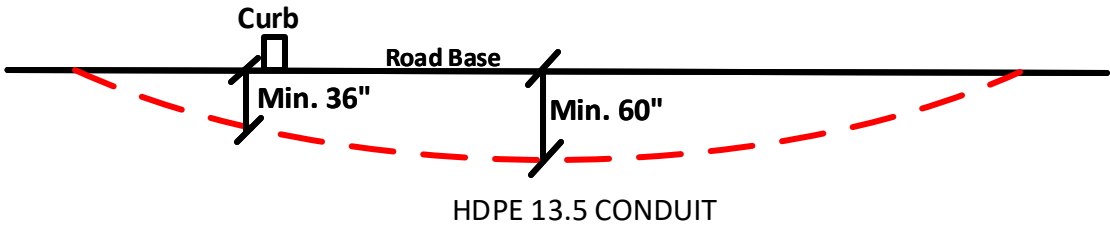
FOLLOW ALL NESC CONSTRUCTION GUIDELINES.

BURIED CONDUIT MUST CROSS UNDERNEATH ALL CITY UTILITIES

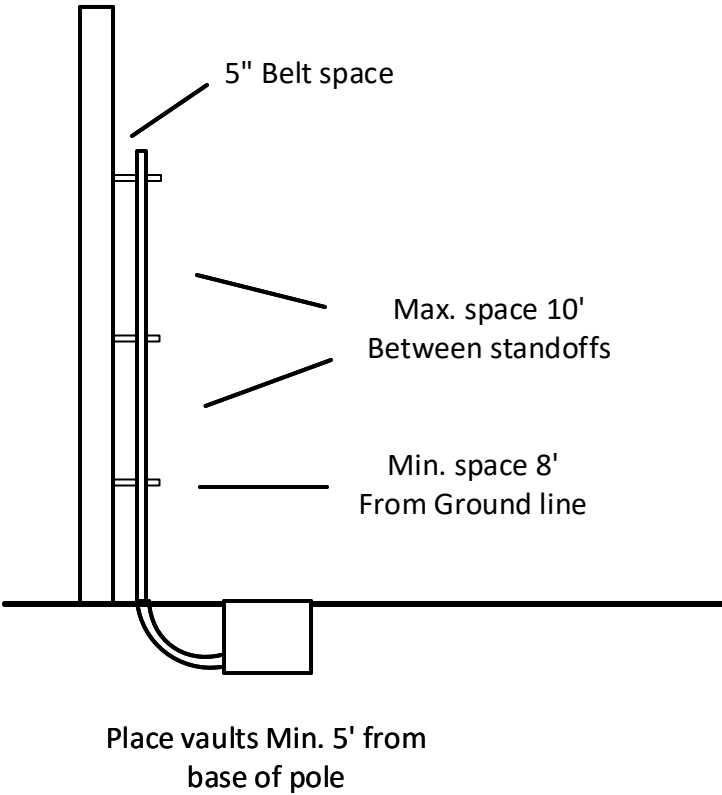
CONTRACTOR WILL HAVE ON SITE THE APPROVED DRAWINGS FROM THE UTILITY AND OR
STATE,COUNTY,CITY,RAILROAD.

CONTRACTOR WILL PROVIDE CONDUIT AND HAND HOLES

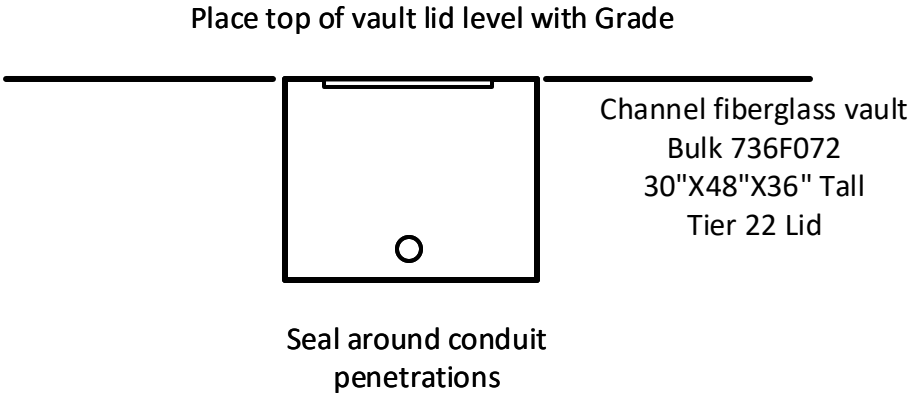
Road crossing Detail



Riser Detail



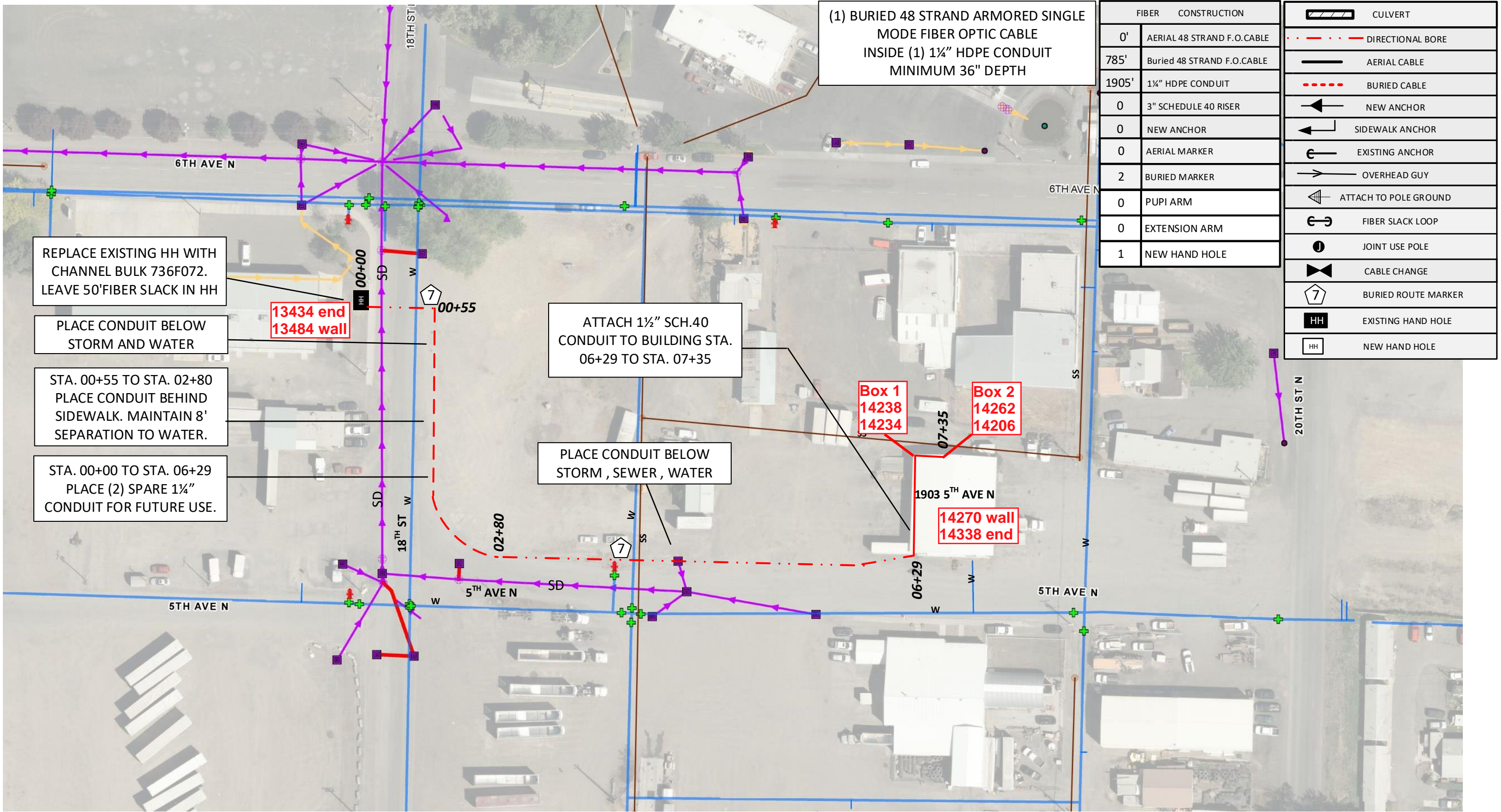
Vault/ Hand Hole Detail



Drawing Name:Port of Lewiston	Drawn By:Ron Glessner 01-30-18				REV.			
	1903 5 TH AVE N.				REV.	DESCRIPTION	DATE	BY
	SIZE	FSCM NO	DWG NO		REV.	DESCRIPTION	DATE	BY
	SCALE	No scale		SHEET 2	REV.	DESCRIPTION	DATE	BY

Contact Information	Port of Lewiston	State:ID County:Nez Perce City:Lewiston
	Dave Doeringsfeld	
	208-753-5531	
	Outside Plant Maintenance,Ilc	
	Ron Glessner208-661-5648	
Section: Township: Range: Legal:		





(1) BURIED 48 STRAND ARMORED SINGLE
MODE FIBER OPTIC CABLE
INSIDE (1) 1¼" HDPE CONDUIT
MINIMUM 36" DEPTH

FIBER	CONSTRUCTION
0'	AERIAL 48 STRAND F.O.CABLE
785'	Buried 48 STRAND F.O.CABLE
1905'	1¼" HDPE CONDUIT
0	3" SCHEDULE 40 RISER
0	NEW ANCHOR
0	AERIAL MARKER
2	BURIED MARKER
0	PUPI ARM
0	EXTENSION ARM
1	NEW HAND HOLE

	CULVERT
	DIRECTIONAL BORE
	AERIAL CABLE
	BURIED CABLE
	NEW ANCHOR
	SIDEWALK ANCHOR
	EXISTING ANCHOR
	OVERHEAD GUY
	ATTACH TO POLE GROUND
	FIBER SLACK LOOP
	JOINT USE POLE
	CABLE CHANGE
	BURIED ROUTE MARKER
	EXISTING HAND HOLE
	NEW HAND HOLE

REPLACE EXISTING HH WITH
CHANNEL BULK 736F072.
LEAVE 50' FIBER SLACK IN HH

PLACE CONDUIT BELOW
STORM AND WATER

STA. 00+55 TO STA. 02+80
PLACE CONDUIT BEHIND
SIDEWALK. MAINTAIN 8'
SEPARATION TO WATER.

STA. 00+00 TO STA. 06+29
PLACE (2) SPARE 1¼"
CONDUIT FOR FUTURE USE.

ATTACH 1½" SCH.40
CONDUIT TO BUILDING STA.
06+29 TO STA. 07+35

PLACE CONDUIT BELOW
STORM , SEWER , WATER

Box 1
14238
14234

Box 2
14262
14206

1903 5TH AVE N
14270 wall
14338 end

Drawing Name:Port of Lewiston

Drawn By: Ron Glessner 01-30-18

1903 5th Ave N

SIZE	FSCMNO	DWG NO	REV
SCALE		SHEET 3	

REV.	REVISED	02-26-18	RG
REV.	DESCRIPTION	DATE	BY
REV.	DESCRIPTION	DATE	BY
REV.	DESCRIPTION	DATE	BY
REV.	DESCRIPTION	DATE	BY

Contact Information	State: ID County:Nez Perce City:Lewiston
Port of Lewiston Dave Doeringsfeld 208-743-5531 Outside Plant Maintenance,Ilc Ron Glessner208-661-5648	Section: Township: Range: Legal:





ATTACH 1½" SCHEDULE 40
CONDUIT TO NORTH SIDE OF
BUILDING. PENETRATE
BUILDING BELOW EXISTING
PHONE CABLE.

Drawing Name:Port of Lewiston	Drawn By: Ron Glessner 01-30-18				REV.	Revised	02-26-18	RG	Contact Information Port of Lewiston Dave Doeringsfeld 208-743-5531 Outside Plant Maintenance,Ilc Ron Glessner208-661-5648	State: ID County:Nez Perce City:Lewiston	
	1903 5 th AVE N.				REV.	DESCRIPTION	DATE	BY			
	SIZE	FSCM NO	DWG NO	REV	REV.	DESCRIPTION	DATE	BY		Section: Township: Range: Legal:	
	SCALE		SHEET 4		REV.	DESCRIPTION	DATE	BY			
					REV.	DESCRIPTION	DATE	BY			

