

FIBER CONSTRUCTION	
Keyed Notes:	#
Install 2" PVC conduit on stand offs	1
Install 1"x7' manarray anchor, 6M down guy & guy guard	2
Attach to Avista MGN	3
Attach to existing anchor	4
Use HDPE 13.5 conduit for all buried construction	5
Buried Hand hole with 150' fiber slack loop	6
Install route marker	7

FIBER CONSTRUCTION	
UNIT DESCRIPTION	AMT
<b>1 1/2" HDPE 13.5 Conduit</b>	<b>3478'</b>
<b>BFO96CT. Fiber Optic Cable</b>	<b>4078'</b>
<b>Hand Holes</b>	<b>3</b>
<b>Route Markers</b>	<b>7</b>

<b>Drawing Name: Port of Lewiston</b>		Fielded by Ron Glessner 08-19-16	
<b>SNAKE RIVER AVE</b>			
SIZE	FSCMNO	REV	
SCALE	SHEET		Cover

Revised	12-07-16		
REV.			
REV.	DESCRIPTION	DATE	BY
REV.	DESCRIPTION	DATE	BY

Contact Information		State: ID
Port of Lewiston		County: Nez Perce
Dave Doeringsfeld		City: Lewiston
208-743-5531		Section:
Outside Plant Maintenance, LLC		Township:
Ron Glessner 208-661-5648		Range:
		Legal:



**GENERAL CONSTRUCTION NOTES**

CONTRACTOR IS RESPONSIBLE FOR ALL PERMITS EXCEPT STATE HWY., COUNTY ROAD,RAILROAD OR WATER CROSSINGS.

RESTORATION OF ALL RIGHT OF WAY GROUND WILL BE RESTORED TO ORIGINAL CONDITION OR BETTER.

CONTRACTOR WILL COORDINATE WITH OSP MANAGER 24 HRS. PRIOR TO BEGINNING CONSTRUCTION.

OSP MANAGER WILL CONTACT BUILDING OWNER/TENANT 24 HRS. PRIOR TO BEGINNING CONSTRUCTION TO COORDINATE ACCESS TO BUILDINGS.

CONTRACTOR IS RESPONSIBLE FOR CALLING LOCATES AND IS RESPONSIBLE FOR REPAIR AND RESTORATION OF DAMAGED UTILITIES.

FOLLOW ALL NESC CONSTRUCTION GUIDELINES.

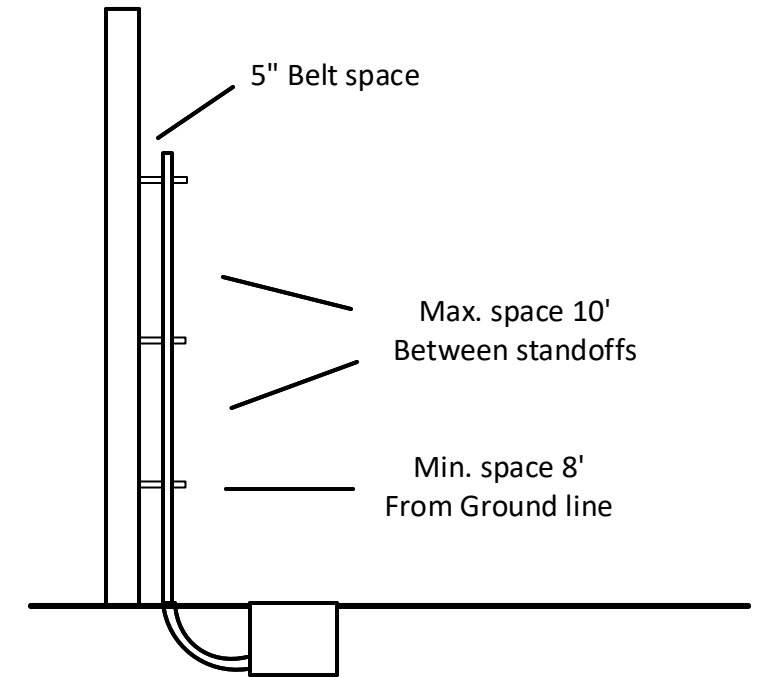
BURIED CONDUIT MUST CROSS UNDERNEATH ALL CITY UTILITIES

CONTRACTOR WILL HAVE ON SITE THE APPROVED DRAWINGS FROM THE UTILITY AND OR STATE,COUNTY,CITY,RAILROAD.

CONTRACTOR WILL PROVIDE CONDUIT AND HAND HOLES

Port will survey south ROW on 11<sup>th</sup> ave. Contractor will place conduit just inside ROW. Contractor will leave 150' fiber slack loop in HH. City of Lewiston will stake out location of future catch basins. Contractor maintain 8' separation to catch basins.

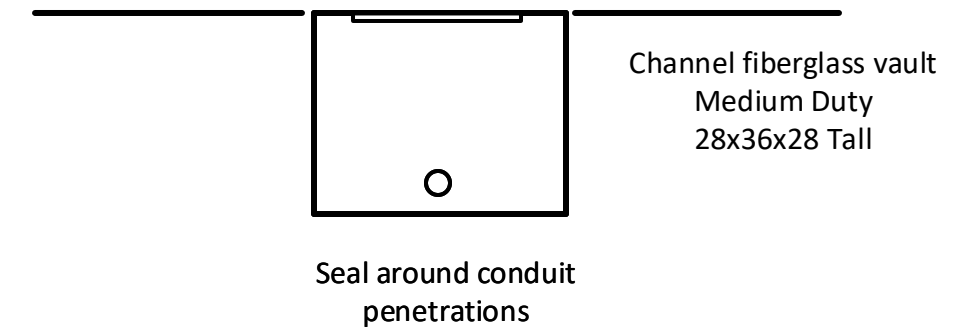
Riser Detail



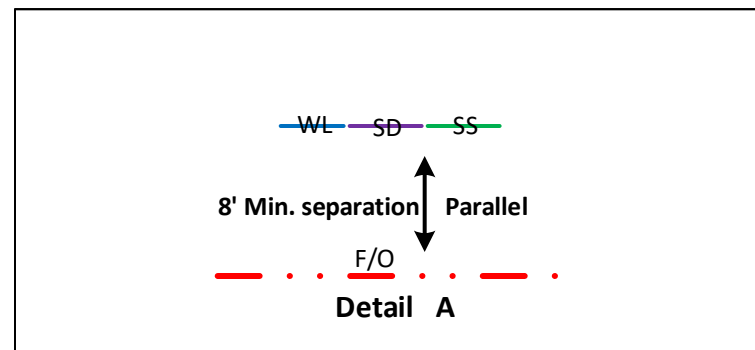
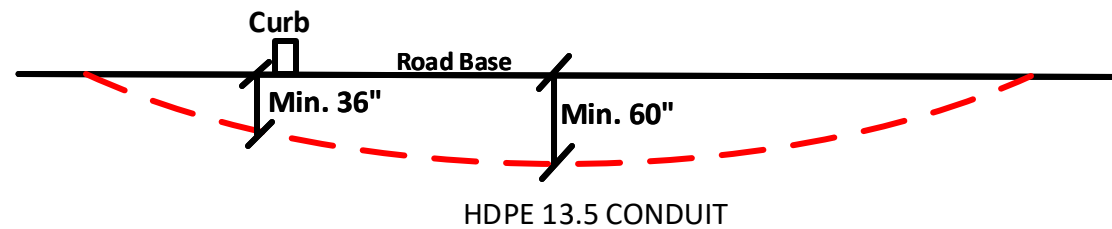
Place vaults Min. 5' from base of pole

Vault/ Hand Hole Detail

Place top of vault lid level with Grade



Road crossing Detail

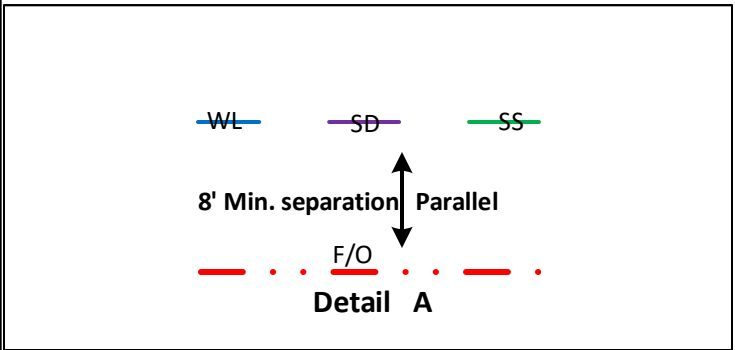
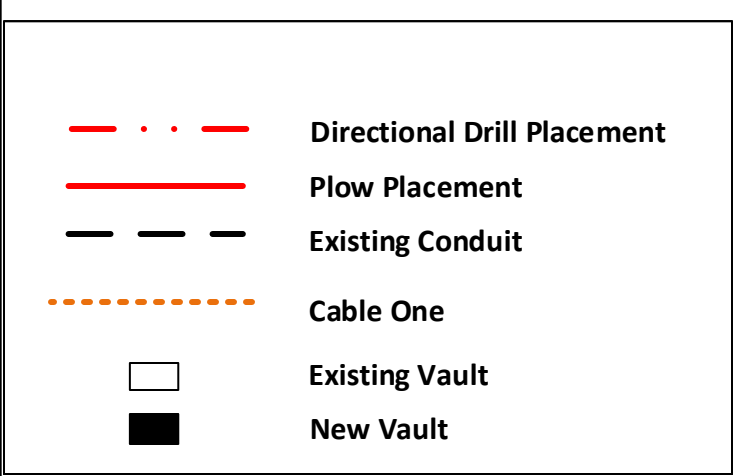


<b>Drawing Name:Port of Lewiston</b>		Drawn By:Ron Glessner 08-19-16	
<b>SNAKE RIVER AVE</b>			
SIZE	FSCM NO	DWG NO	REV
SCALE	No scale	Construction notes	

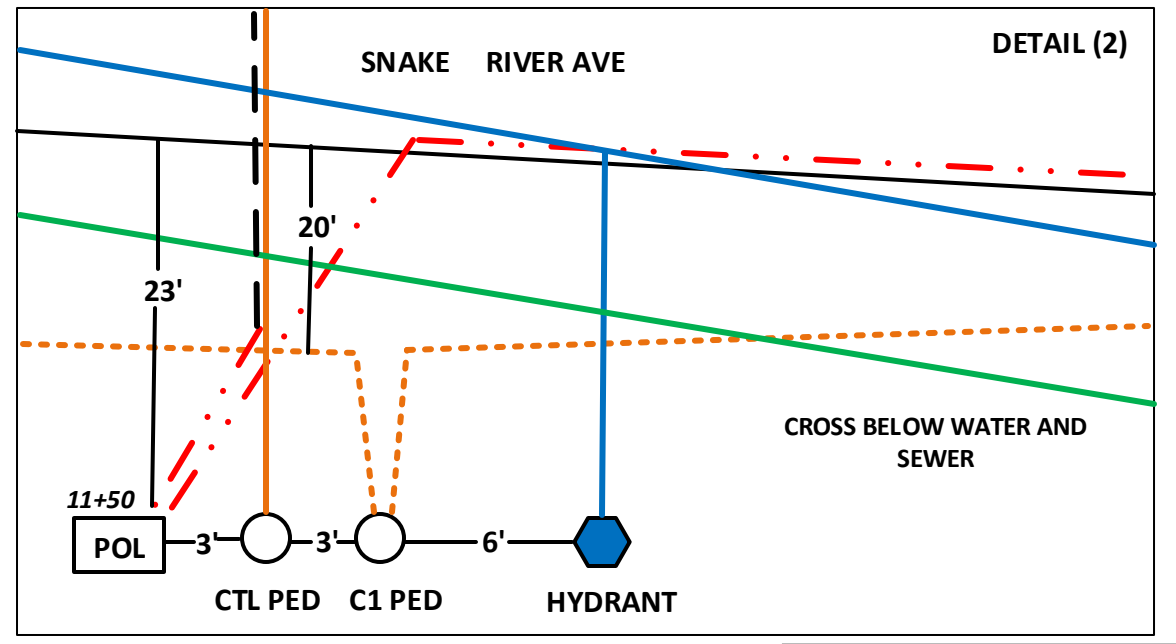
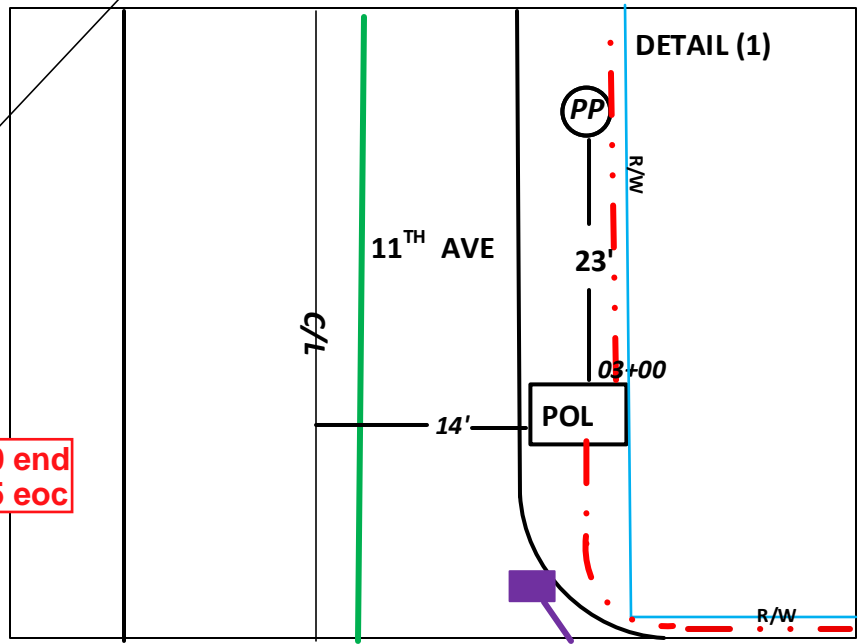
REV.	Revised	01-07-17	RG
REV.	DESCRIPTION	DATE	BY
REV.	DESCRIPTION	DATE	BY
REV.	DESCRIPTION	DATE	BY

Contact Information		State:ID
Port of Lewiston Dave Doeringsfeld 208-753-5531 Outside Plant Maintenance, llc Ron Glessner208-661-5648		County:Nez Perce
		City:Lewiston
		Section:
		Township:
		Range:
		Legal:





Port will have south ROW on 11<sup>th</sup> ave surveyed. Contractor place conduit just inside ROW.



**POL HH**  
Place 14' from 11<sup>th</sup> Ave. center line  
Leave 150' Fiber slack loop

City of Lewiston will stake out catch basin locations.  
Contractor maintain 8' separation to catch basins.

Place One 1 1/4" HDPE 13.5 conduit at a minimum 3' depth.  
Place conduit 21' from Snake river Ave. center line  
Sta. 03+42 to Sta. 10+80  
Place conduit using directional drill. Cross below city utilities with 5' separation.  
Blow or pull one 96ct. Fiber optic cable.

FIBER CONSTRUCTION	
UNIT DESCRIPTION	AMT
BFO96CT. Fiber Optic Cable	1738'
HDPE 13.5 CONDUIT	1288'
NEW HAND HOLE	2
ROUTE MARKER	3

- 7 = ROUTE MARKER
- 6 = HAND HOLE/ 150' SLACK

Drawing Name: Port of Lewiston

Drawn By: Ron Glessner 8-01-16			
<b>SNAKE RIVER AVE</b>			
SIZE	FSCMNO	DWG NO	REV
SCALE 1"=100'		SHEET 1	

REV.	DESCRIPTION	DATE	BY
REV.	REVISED	12-07-16	RG
REV.	Revised	01-06-17	RG
REV.	DESCRIPTION	DATE	BY
REV.	DESCRIPTION	DATE	BY
REV.	DESCRIPTION	DATE	BY

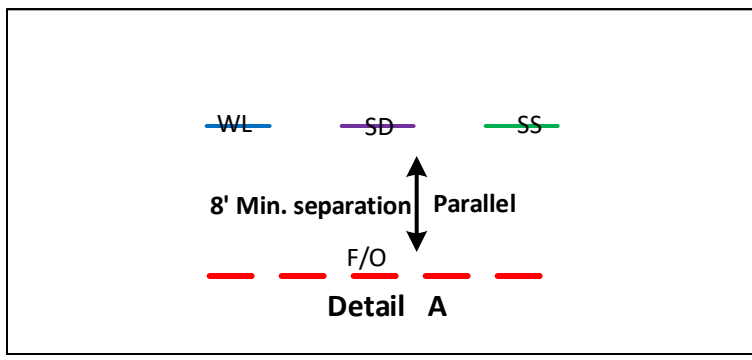
Contact Information  
  
Port of Lewiston  
Dave Doeringsfeld  
208-743-5531  
Outside Plant Maintenance, llc  
Ron Glessner 208-661-5648

State: ID  
County: Nez Perce  
City: Lewiston  
  
Section:  
Township:  
Range:  
Legal:



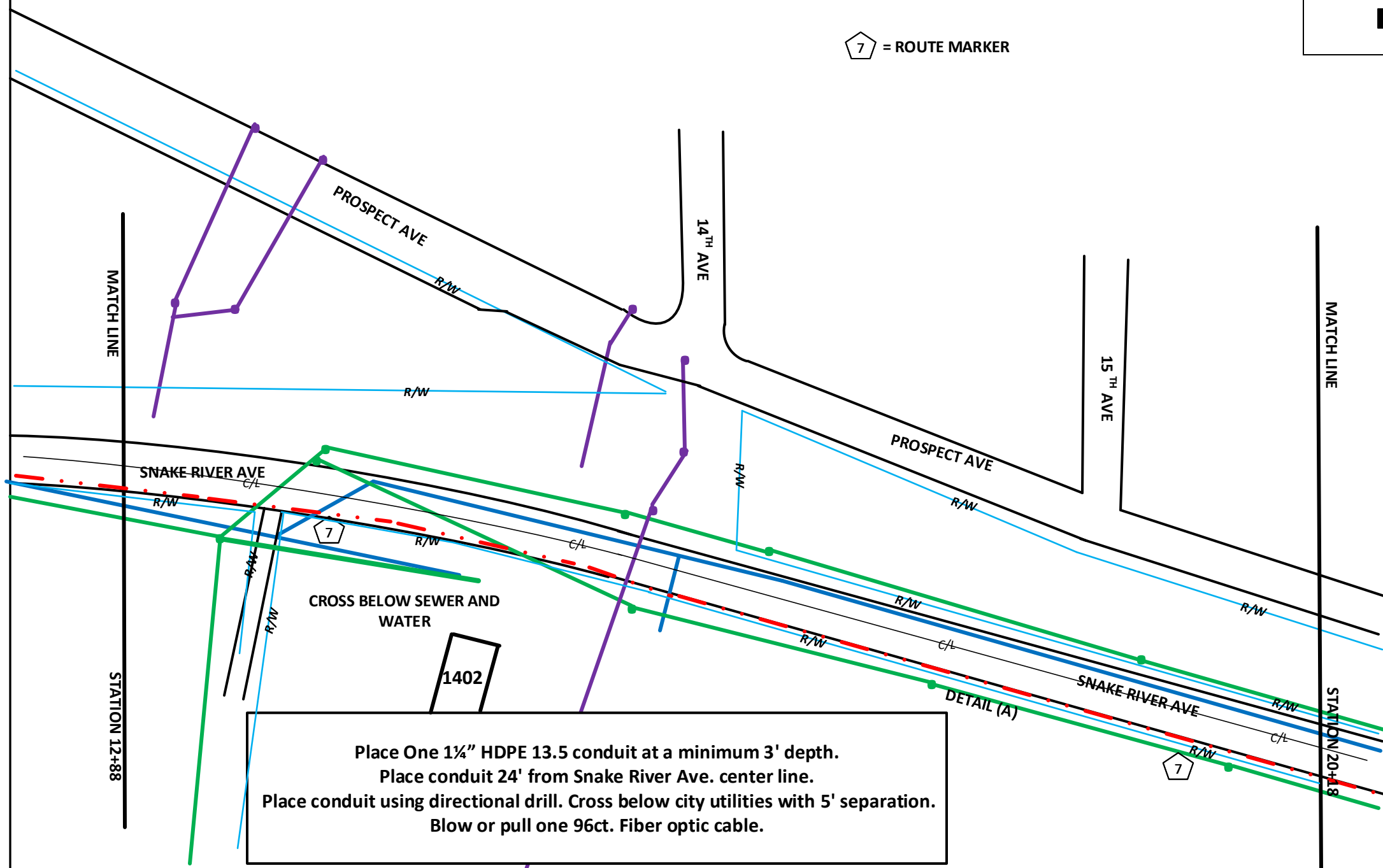


FIBER CONSTRUCTION	
UNIT DESCRIPTION	AMT
BFO96ct. Fiber Optic Cable	730'
HDPE 13.5 CONDUIT	730'
NEW HAND HOLE	0
ROUTE MARKER	2



	Directional Drill Placement
	Plow Placement
	Existing Conduit
	Cable One
	Existing Vault
	New Vault

= ROUTE MARKER



Place One 1¼" HDPE 13.5 conduit at a minimum 3' depth.  
Place conduit 24' from Snake River Ave. center line.  
Place conduit using directional drill. Cross below city utilities with 5' separation.  
Blow or pull one 96ct. Fiber optic cable.

Drawing Name: Port of Lewiston

Drawn By: Ron Glessner 08-19-16			
<b>SNAKE RIVER AVE.</b>			
SIZE	FSCMNO	DWG NO	REV
Scale 1" = 100'		SHEET 2	

REV.	DESCRIPTION	DATE	BY
	Revised	12-07-16	RG

Contact Information  
  
Port of Lewiston  
Dave Doeringsfeld  
208-743-5531  
Outside Plant Maintenance, llc  
Ron Glessner 208-661-5648

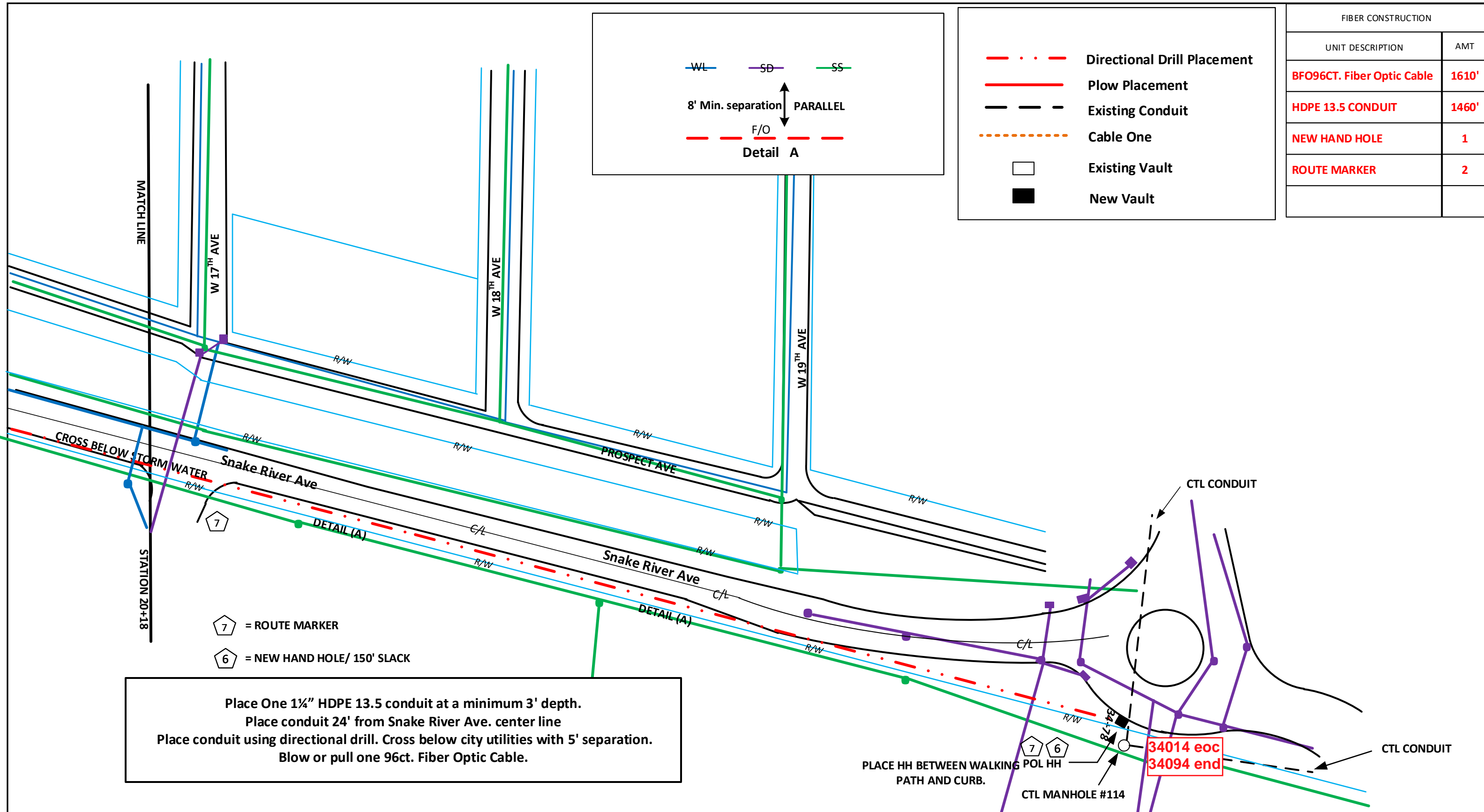
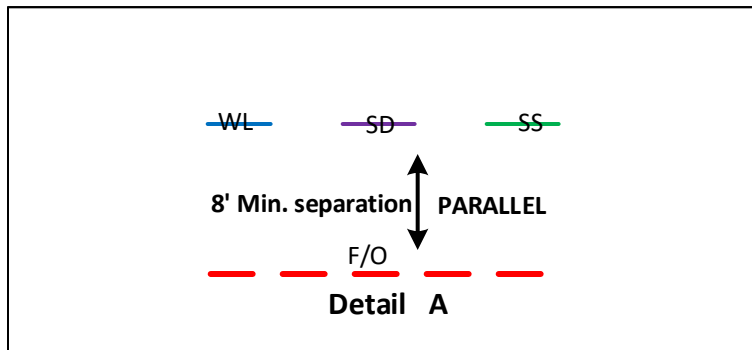
State: ID  
County: Nez Perce  
City: Lewiston  
  
Section:  
Township:  
Range:  
Legal:



FIBER CONSTRUCTION

UNIT DESCRIPTION	AMT
BFO96CT. Fiber Optic Cable	1610'
HDPE 13.5 CONDUIT	1460'
NEW HAND HOLE	1
ROUTE MARKER	2

- . . - Directional Drill Placement
- - - - Plow Placement
- - - - Existing Conduit
- - - - Cable One
- Existing Vault
- New Vault



- 7 = ROUTE MARKER
- 6 = NEW HAND HOLE/ 150' SLACK

Place One 1 1/4" HDPE 13.5 conduit at a minimum 3' depth.  
 Place conduit 24' from Snake River Ave. center line  
 Place conduit using directional drill. Cross below city utilities with 5' separation.  
 Blow or pull one 96ct. Fiber Optic Cable.

Drawing Name: Port of Lewiston		Drawn By: Ron Glessner 08-19-16	
<b>SNAKE RIVER AVE.</b>			
SIZE	FSCMNO	DWG NO	REV
SCALE 1"=100'		SHEET 3	

REV.	DESCRIPTION	DATE	BY
Revised		12-07-16	RG
REV.	DESCRIPTION	DATE	BY
REV.	DESCRIPTION	DATE	BY
REV.	DESCRIPTION	DATE	BY
REV.	DESCRIPTION	DATE	BY

Contact Information

Port of Lewiston  
 Dave Doeringsfeld  
 208-743-5531  
 Outside Plant Maintenance, llc  
 Ron Glessner 208-661-5648

State: ID  
 County: Nez Perce  
 City: Lewiston

Section:  
 Township:  
 Range:  
 Legal:

