



Drawing Name:Port of Lewiston		Drawn By: Ron Glessner 03-01-17				REV.	Revised	4-11-17	RG	Contact Information		State: ID County:Nez Perce City:Lewiston	
		CENTURY LINK CONDUIT				REV.	DESCRIPTION	DATE	BY			Port of Lewiston Dave Doeringsfeld 208-743-5531 Outside Plant Maintenance,Ilc Ron Glessner208-661-5648	
		SIZE	FSCM NO	DWG NO	REV	REV.	DESCRIPTION	DATE	BY			Section: Township: Range: Legal:	
						REV.	DESCRIPTION	DATE	BY				
		SCALE		VICINITY		REV.	DESCRIPTION	DATE	BY				



Directional Drill Placement

Plow Placement

Existing Conduit

Existing Vault

New Vault

FIBER CONSTRUCTION	
UNIT DESCRIPTION	AMT
EXISTING 4" DUCT	2872'
New 1¼" Conduit	8726'
288 CT. FIBER OPTIC CABLE	3662'
NEW HAND HOLE	1

Vault/ Hand Hole Detail

Place top of vault lid level with Grade

Channel fiberglass vault
Bulk 736F072
30"X48"X36" Tall
Tier 22 Lid

Seal around conduit penetrations

PLACE THREE 1¼" HDPE CONTINUOUS CONDUIT INSIDE 4" DUCT.

EXISTING CENTURY LINK DUCT BANK CONTAINING TWENTY (4") DUCTS.

GENERAL CONSTRUCTION NOTES

CONTRACTOR IS RESPONSIBLE FOR ALL PERMITS EXCEPT STATE HWY., COUNTY ROAD,RAILROAD OR WATER CROSSINGS.

RESTORATION OF ALL RIGHT OF WAY GROUND WILL BE RESTORED TO ORIGINAL CONDITION OR BETTER.

CONTRACTOR WILL COORDINATE WITH OSP MANAGER 24 HRS. PRIOR TO BEGINNING CONSTRUCTION.

OSP MANAGER WILL CONTACT BUILDING OWNER/TENANT 24 HRS. PRIOR TO BEGINNING CONSTRUCTION TO COORDINATE ACCESS TO BUILDINGS.

CONTRACTOR IS RESPONSIBLE FOR CALLING LOCATES AND IS RESPONSIBLE FOR REPAIR AND RESTORATION OF DAMAGED UTILITIES.

FOLLOW ALL NESC CONSTRUCTION GUIDELINES.

BURIED CONDUIT MUST CROSS UNDERNEATH ALL CITY UTILITIES

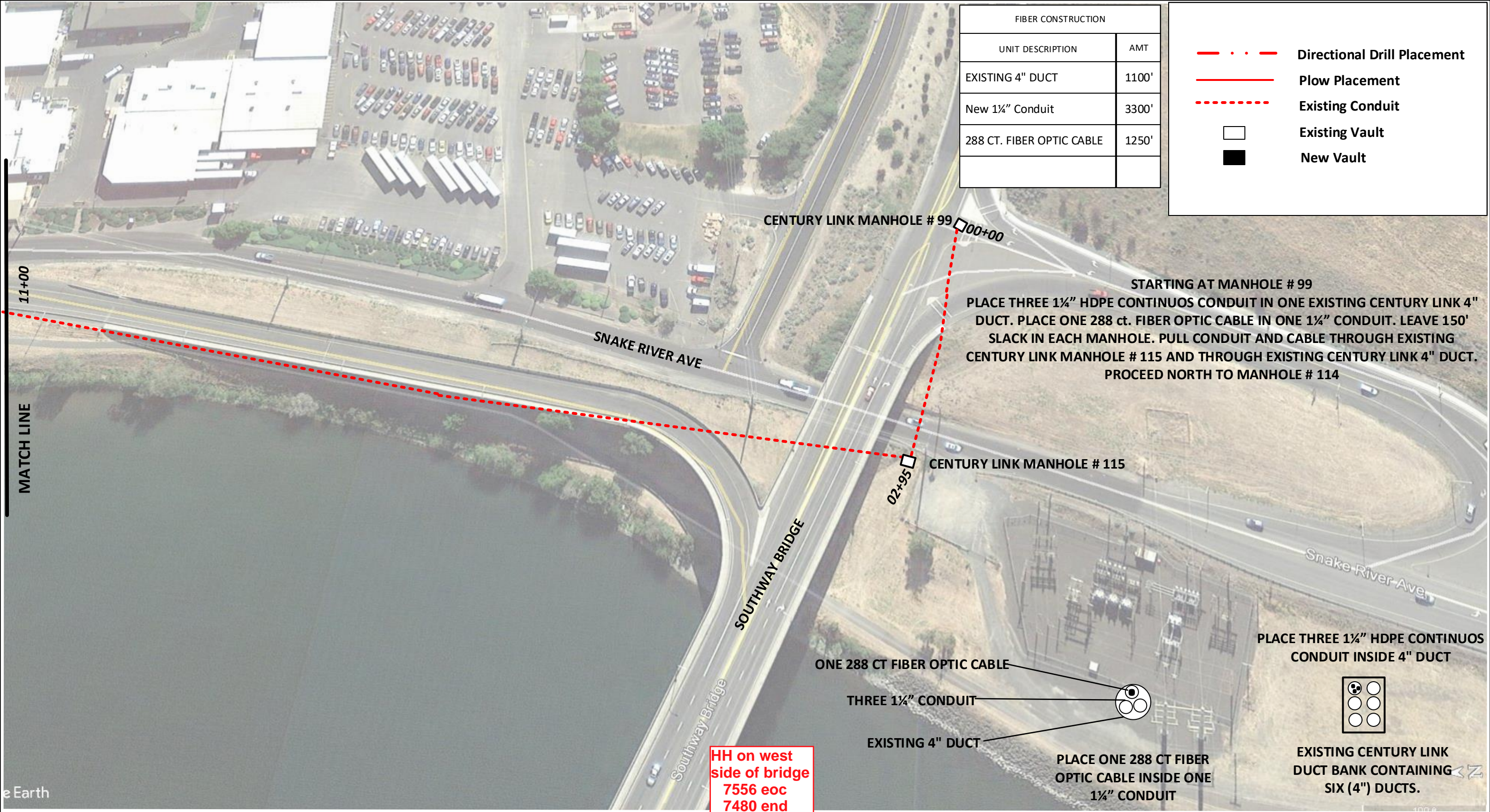
CONTRACTOR WILL HAVE ON SITE THE APPROVED DRAWINGS FROM THE UTILITY AND OR STATE,COUNTY,CITY,RAILROAD.

CONTRACTOR WILL PROVIDE CONDUIT AND HAND HOLES

PLACE ONE 288 CT. FIBER OPTIC CABLE INSIDE ONE 1¼" CONDUIT

288 COUNT FIBER OPTIC CABLE
NOMINAL WEIGHT = 152 lb./ 1000 FEET

Drawing Name:Port of Lewiston	Drawn By:Ron Glessner 03-01-17				REV.	DESCRIPTION	DATE	BY	Contact Information Port of Lewiston Dave Doeringsfeld 208-743-5531 Outside Plant Maintenance,Ilc Ron Glessner208-661-5648	State: ID County: Nez Perce City: Lewiston
	CENTURY LINK CONDUIT				REV.	DESCRIPTION	DATE	BY		
	SIZE	FSCM NO	DWG NO	REV	REV.	DESCRIPTION	DATE	BY		
	SCALE			Construction notes	REV.	DESCRIPTION	DATE	BY		
					REV.	DESCRIPTION	DATE	BY		
Section: Township: Range: Legal:										



Drawing Name:Port of Lewiston		Drawn By: Ron Glessner 03-01-17				REV.	Revised	4-11-17	RG	Contact Information Port of Lewiston Dave Doeringsfeld 208-743-5531 Outside Plant Maintenance,Ilc Ron Glessner208-661-5648	State: ID County:Nez Perce City:Lewiston Section: Township: Range: Legal:
		CENTURY LINK CONDUIT				REV.					
	SIZE	FSCMNO	DWG NO		REV	REV.	DESCRIPTION	DATE	BY		
						REV.	DESCRIPTION	DATE	BY		
	SCALE		SHEET 1			REV.	DESCRIPTION	DATE	BY		



