

12TH AVENUE

13TH AVENUE

2ND STREET

3RD STREET

4TH STREET

14TH AVENUE

15TH AVENUE

16TH AVENUE

GENERAL NOTES

This sheet is provided as supplemental information and in no way amends or modifies the bid document.

Pipeline Notes represent the Owner's Review of existing pipeline conditions and are not intended to indicate work necessary to complete pipeline rehabilitation.

Manhole/Lampwell identification numbers correspond to information presented on Site Data available at the Public Works website: www.cityoflewiston.org



CITY OF LEWISTON
 Engineering Department
 1134 "F" Street
 Lewiston, ID 83501
 208-746-1316

Wastewater Services

2003 Sewer Rehabilitation
Supplemental Information

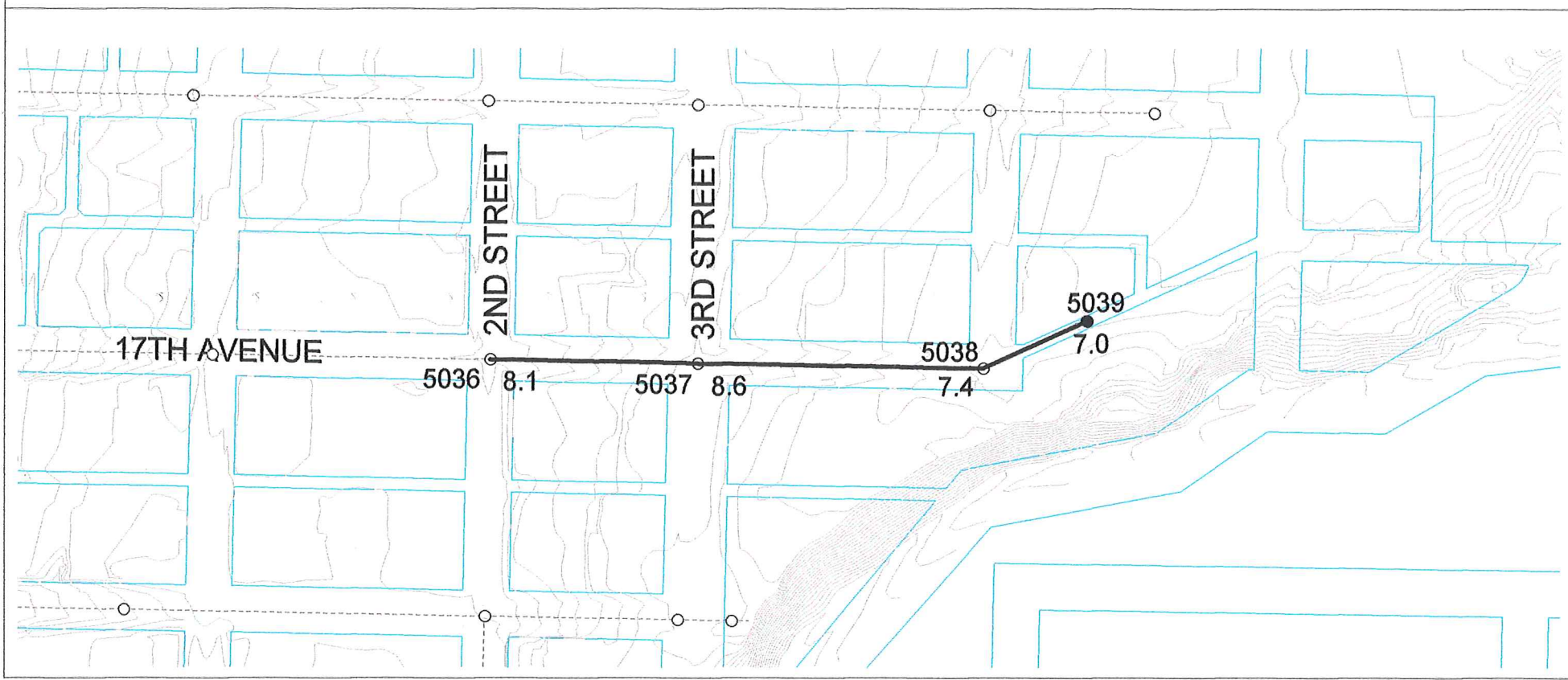
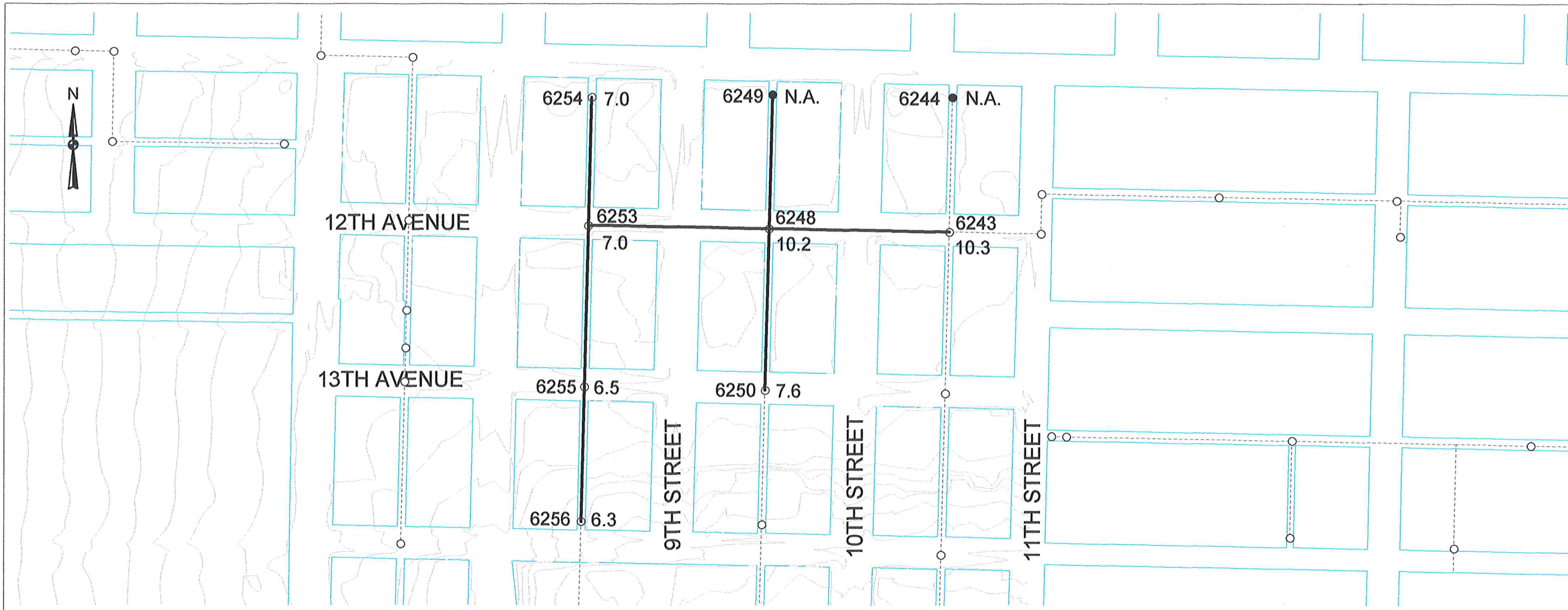
NO.	DATE	FILENAME	DESCRIPTION	BY	JOB NO.	SHEET	OF
1	7/30		ADD PIPE MATERIAL	SM		2	3

DESIGNED BY: SM SCALE: 1"=200'

DRAWN BY: DATE: 7/03

CHECKED BY: DS DRAWING NO.:

BY: JOB NO. SHEET 2 OF 3



General Notes

This sheet is provided as supplemental information for bidders and in no way amends or modifies the bid documents.

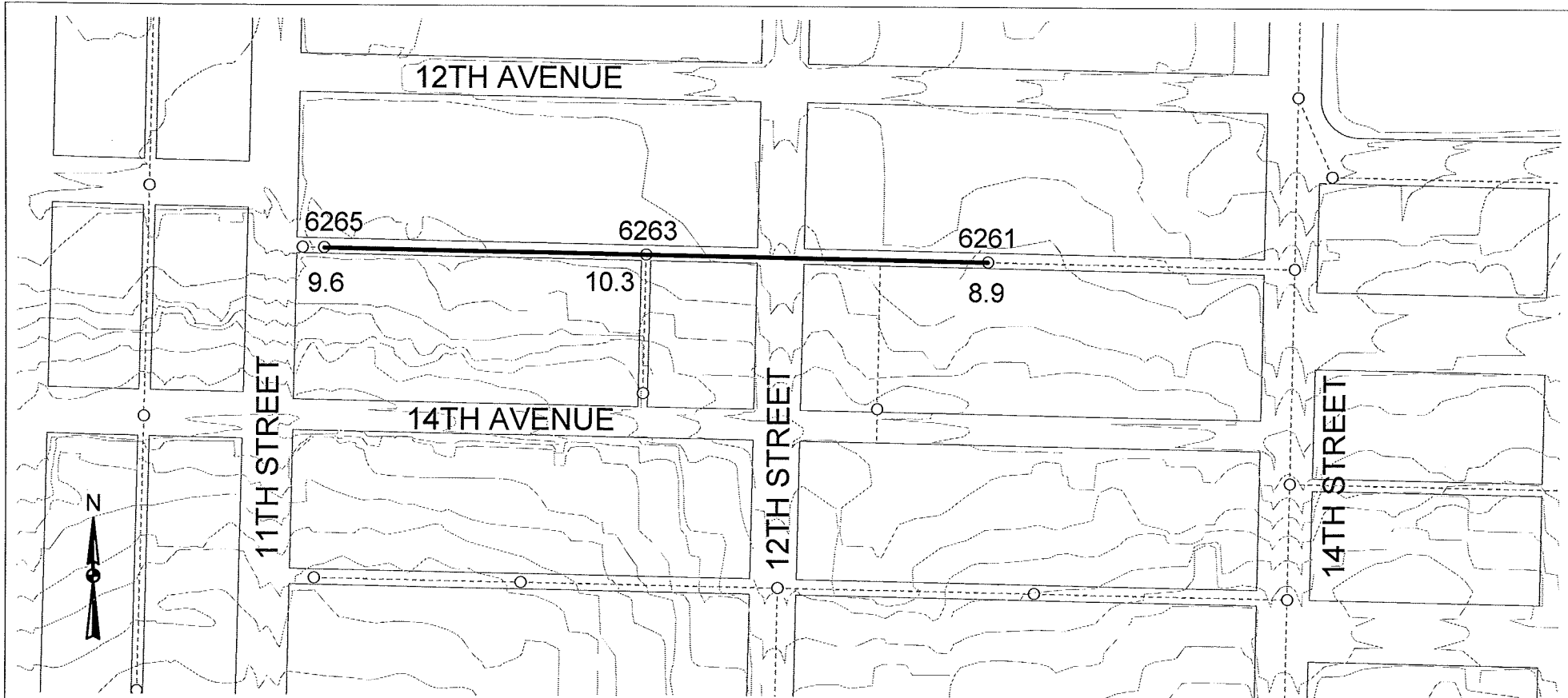
Manhole Identification Numbers and Invert Depths (shown in feet) correspond to record data obtained by Owner.

Bidders shall confirm the location of the pipelines shown and consider the information in the preparation of bids.

Contour Interval: 2 FT

DESIGNED BY: SM	SCALE: 1"=200'	DATE: 4/04	DRAWING NO.:	JOB NO.	BY	DESCRIPTION	FILENAME	NO.	DATE
	DRAWN BY:								
<p style="text-align: center;">Wastewater Services</p> <p style="text-align: center;">2004 Sewer Rehabilitation Supplemental Information</p>									

CITY OF LEWISTON
 Engineering Department
 1134 "F" Street
 Lewiston, ID 83501
 208-746-1316



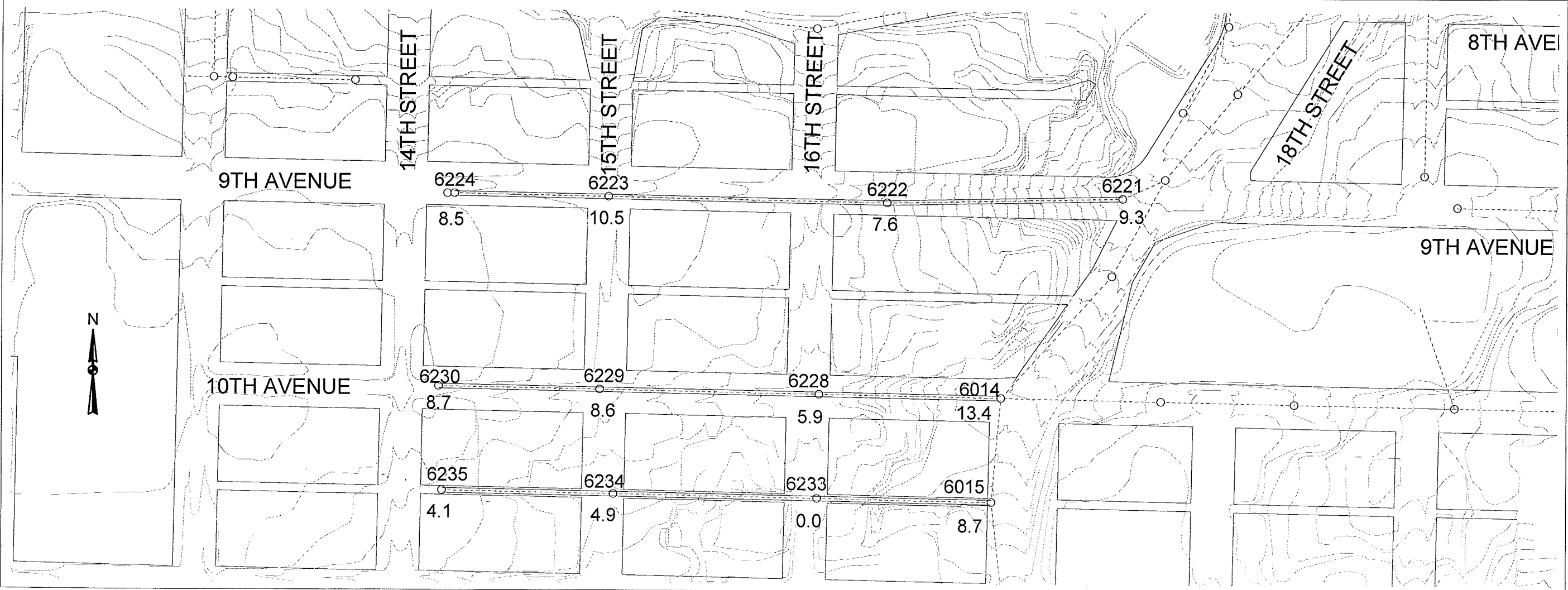
General Notes

Sheets 4 and 5 are provided as supplemental information for bidders and in no way amend or modify the bid documents.

Manhole Identification Numbers and Invert Depths (shown in feet) correspond to record data obtained by Owner.

Bidders shall confirm the location of the pipelines shown and consider the information in the preparation of bids.

Contour Interval: 2 FT




NO.	DATE	FILENAME	DESCRIPTION	BY	JOB NO.

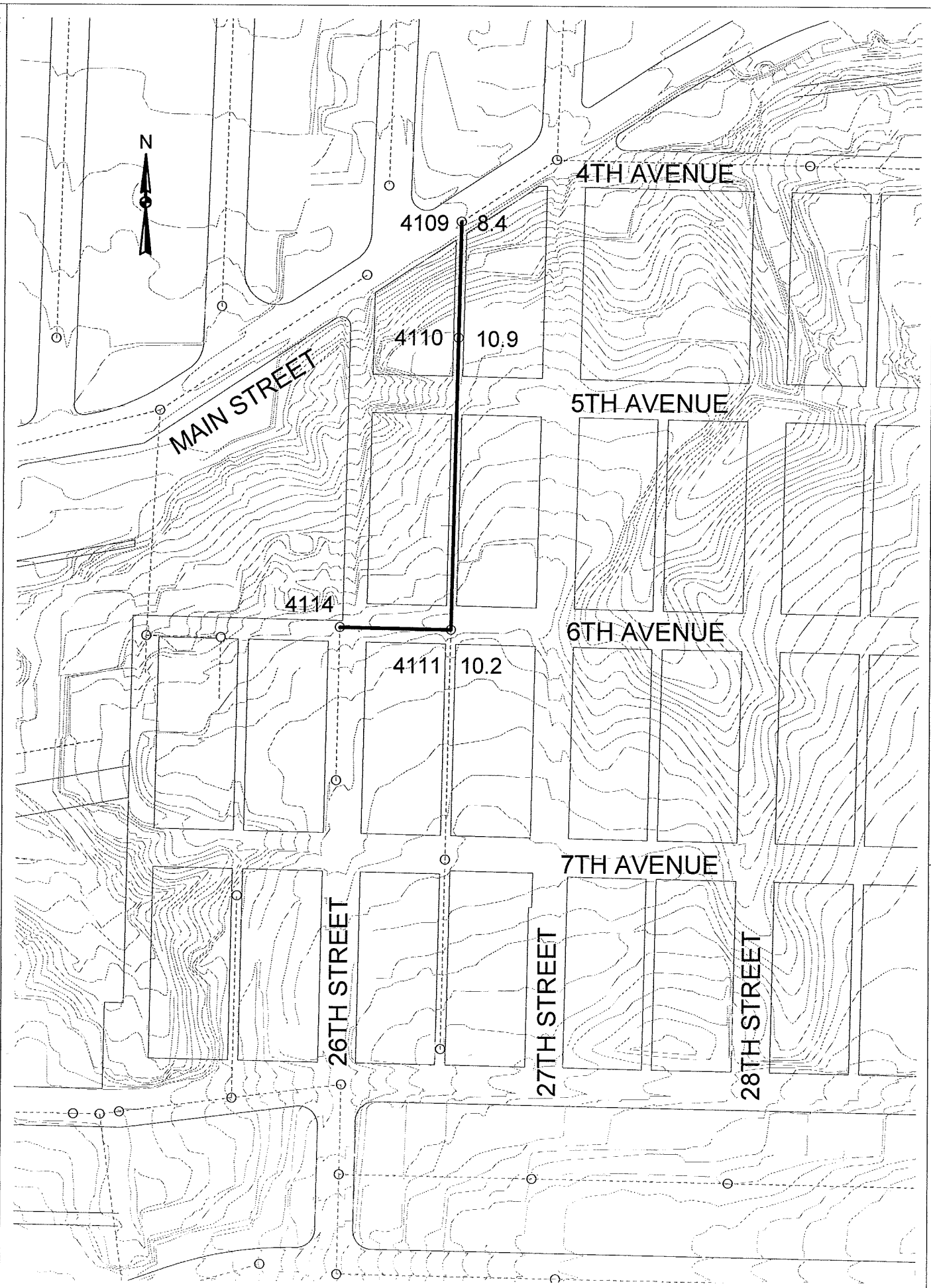
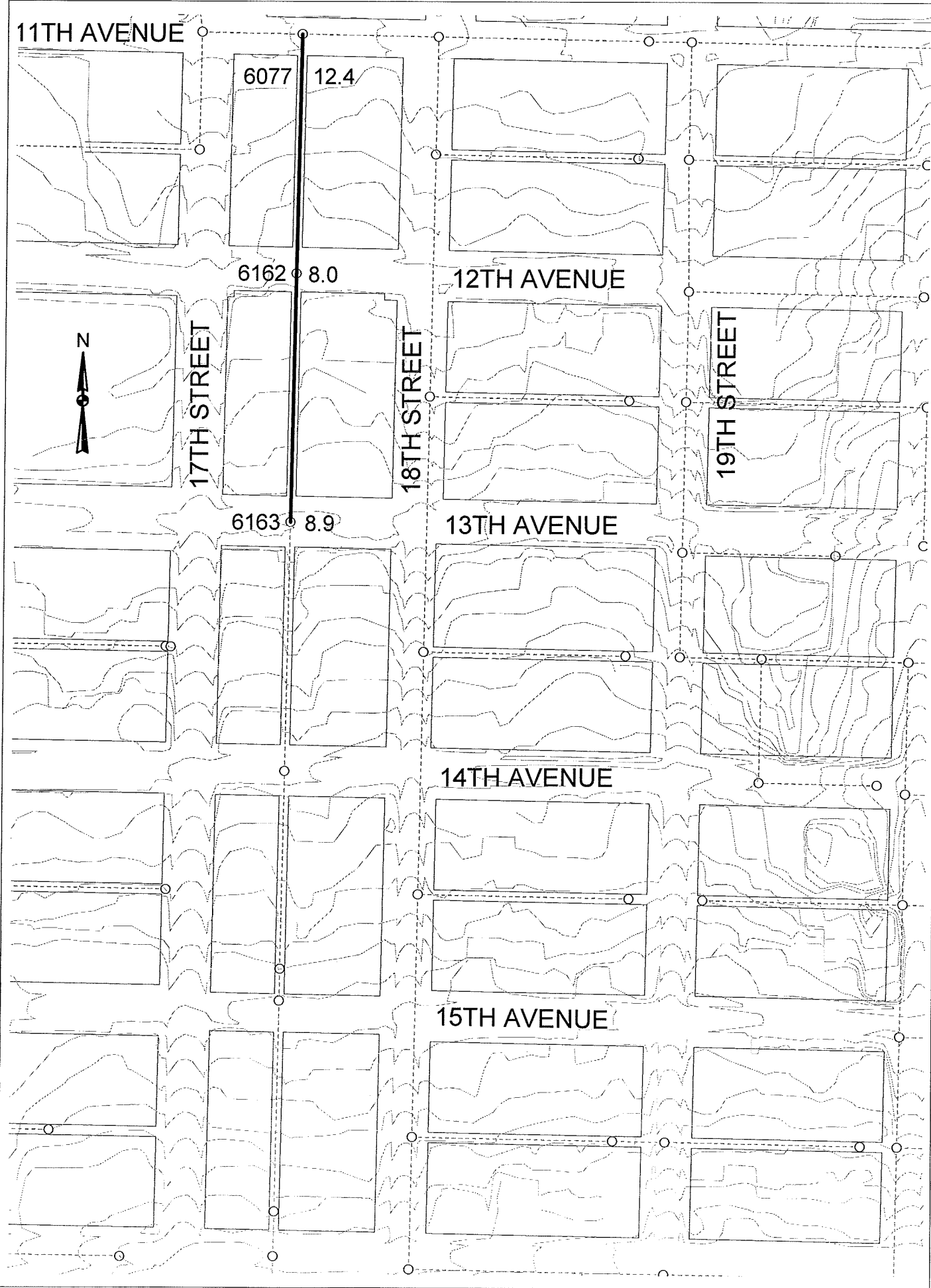
DESIGNED BY: SM	SCALE: 1"=200'
DRAWN BY:	DATE: 6/05
CHECKED BY: DS	DRAWING NO.:
BY:	SHEET: 4 OF 5

Wastewater Services


2005 Sewer Rehabilitation
Supplementary Information



CITY OF LEWISTON
Engineering Department
1134 "F" Street
Lewiston, ID 83501
208-746-1316



CITY OF LEWISTON
 Engineering Department
 1134 "F" Street
 Lewiston, ID 83501
 208-746-1316



DESIGNED BY: **SM** SCALE: **1"=200'**

DRAWN BY: DATE: **6/05**

CHECKED BY: **DS** DRAWING NO.:

BY: JOB NO. SHEET: **5** OF **5**

NO.	DATE	FILENAME	DESCRIPTION

Wastewater Services

2005 Sewer Rehabilitation
 Supplementary Information



SHEET 1

SHEET 2

SHEET 4

SHEET 3

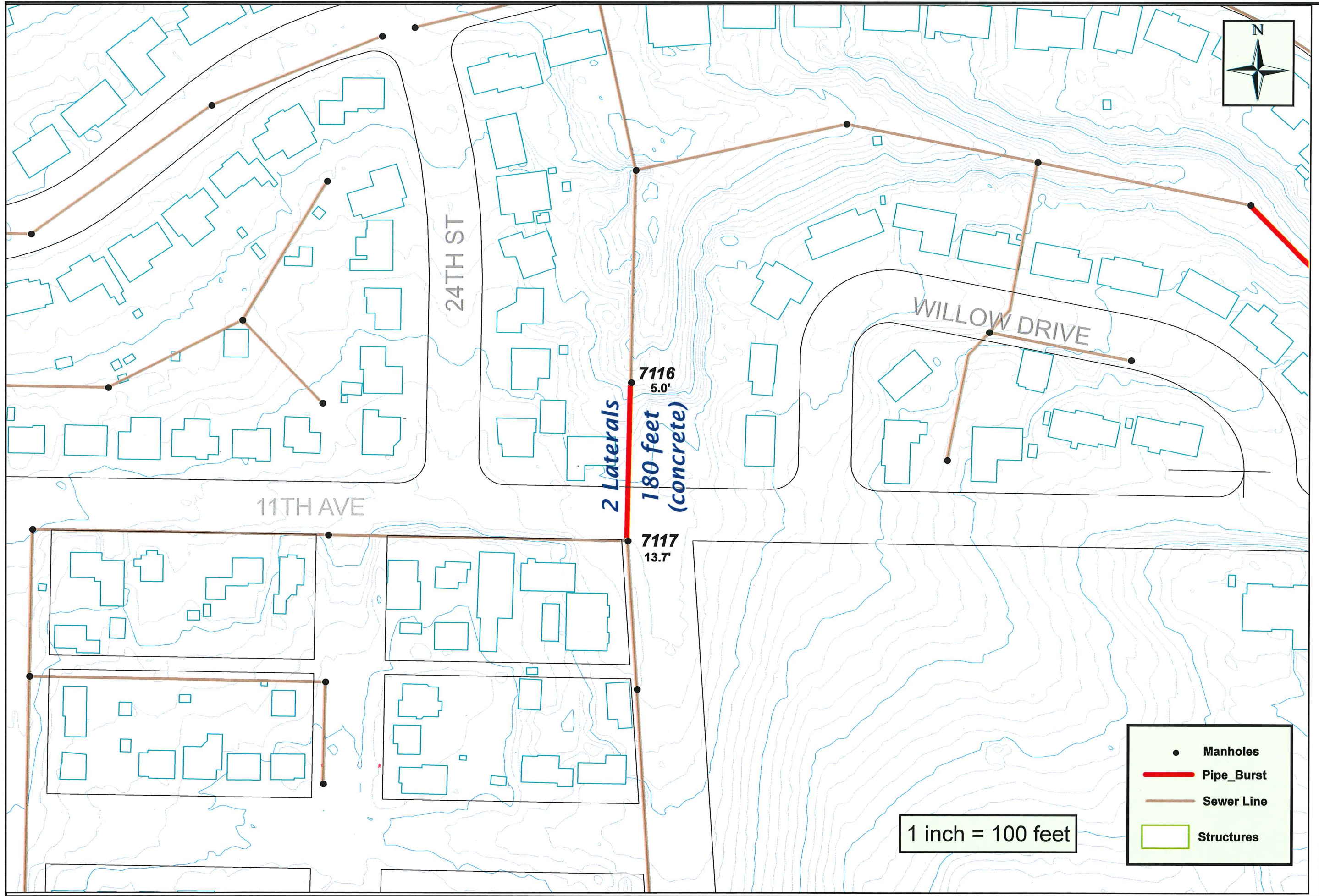
~~SHEET 5~~
DELETED

~~SHEET 5~~
DELETED

— Pipe_Burst

BASE BID | SHEETS 1-4
~~AND ALTERNATE 5-6~~

DEPARTMENT Wastewater Services 2009 Sewer Rehab		CITY OF LEWISTON PUBLIC WORKS DEPARTMENT ENGINEERING SERVICES 184 F STREET LEWISTON ID 83501 (208) 746-9671 FAX (208) 746-9667		REVISIONS NO. DATE FILENAME DESCRIPTION BY		DESIGNED BY: SP DRAWN BY: DSP CHECKED BY: SM JOB NO.: Transfer Station	SCALE: None DATE: 07/20/2009 DRAWING NO.: PRELIMINARY SHEET INDEX
-------------------------------------------------------	--	-----------------------------------------------------------------------------------------------------------------------------------------------	--	-----------------------------------------------	--	---------------------------------------------------------------------------------	----------------------------------------------------------------------------



- Manholes
- Pipe_Burst
- Sewer Line
- Structures

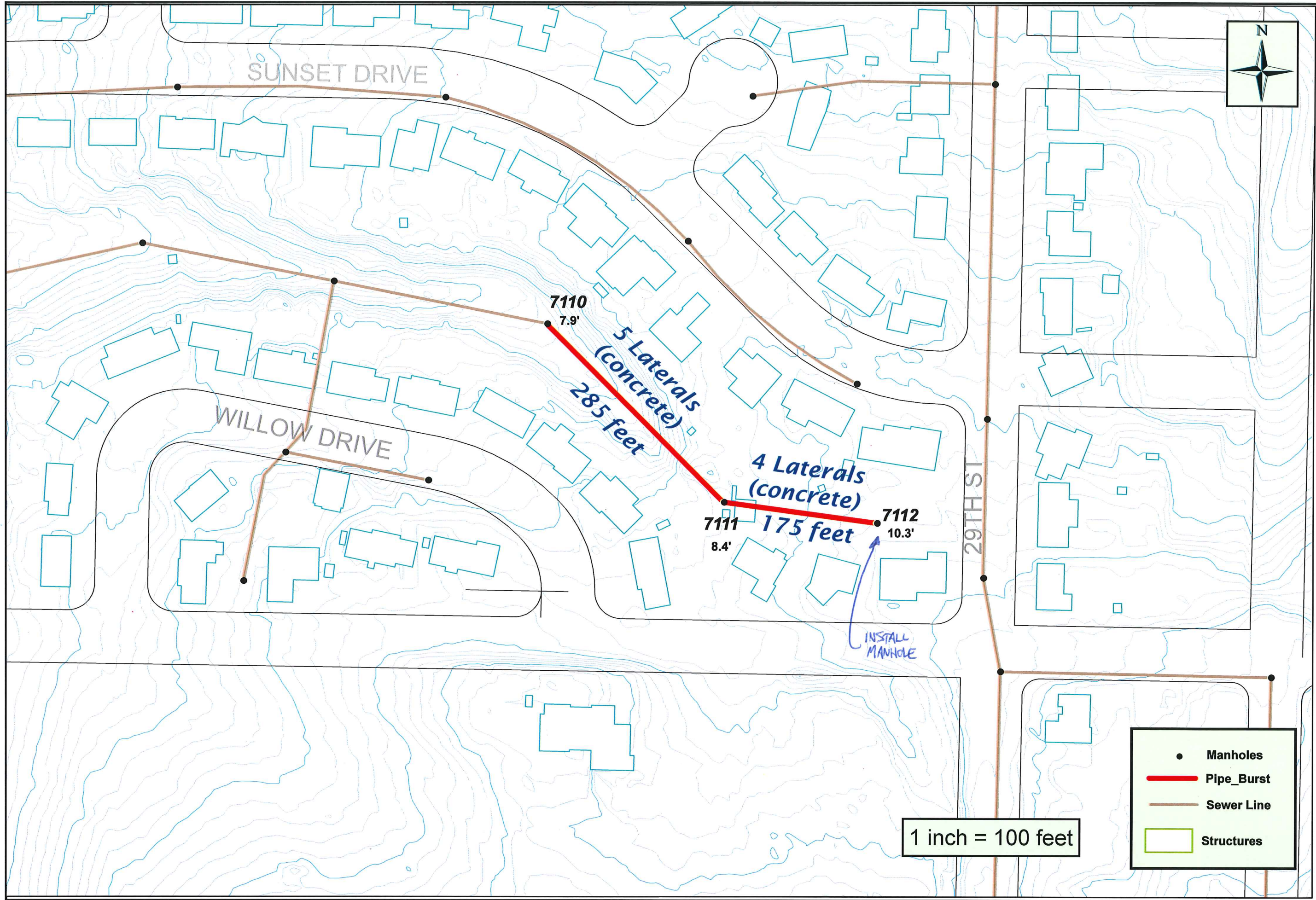
1 inch = 100 feet

CITY OF LEWISTON
 PUBLIC WORKS DEPARTMENT
 ENGINEERING SERVICES
 134 F STREET LEWISTON ID 83501
 (208) 746-3671 FAX (208) 746-9667

DEPARTMENT
 Wastewater Services
 2009 Sewer Rehab

NO.	DATE	FILENAME	DESCRIPTION	BY

DESIGNED BY: SP	SCALE: None
DRAWN BY: DSP	DATE: 07/20/2009
CHECKED BY: SM	DRAWING NO.: PRELIMINARY
JOB NO.:	SHEET 1 OF 4



- Manholes
- Pipe_Burst
- Sewer Line
- Structures

CITY OF LEWISTON
PUBLIC WORKS DEPARTMENT
ENGINEERING SERVICES
134 F STREET LEWISTON ID 83501
(208) 746-9671 FAX (208) 746-9667

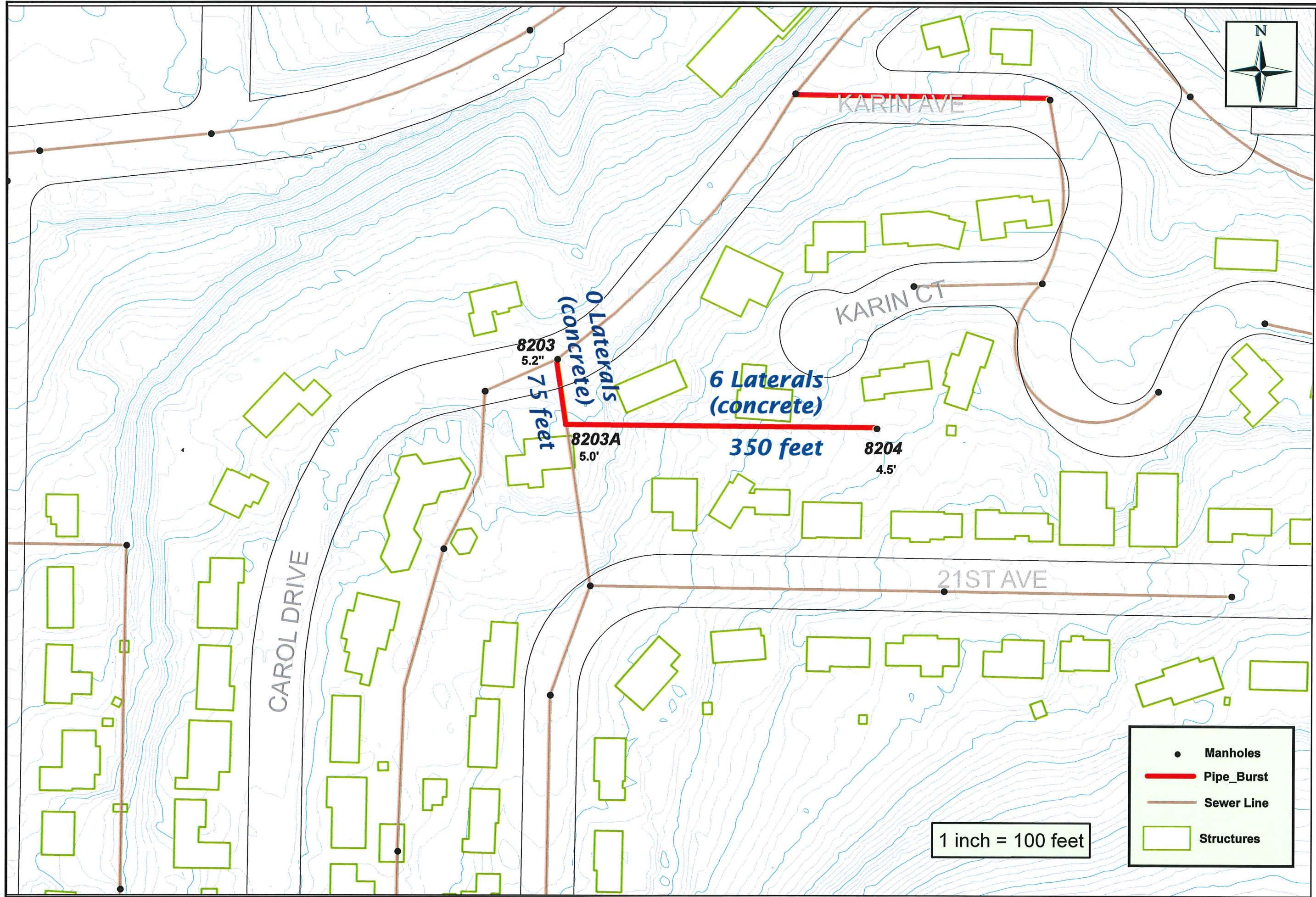
DEPARTMENT
Wastewater Services
2009 Sewer Rehab

DESIGNED BY: SP
DRAWN BY: DSP
CHECKED BY: SM
JOB NO.: [REDACTED]

SCALE: None
DATE: 07/20/2009
DRAWING NO.: PRELIMINARY
SHEET 2 of 4


NO.	DATE	FILENAME	DESCRIPTION	BY

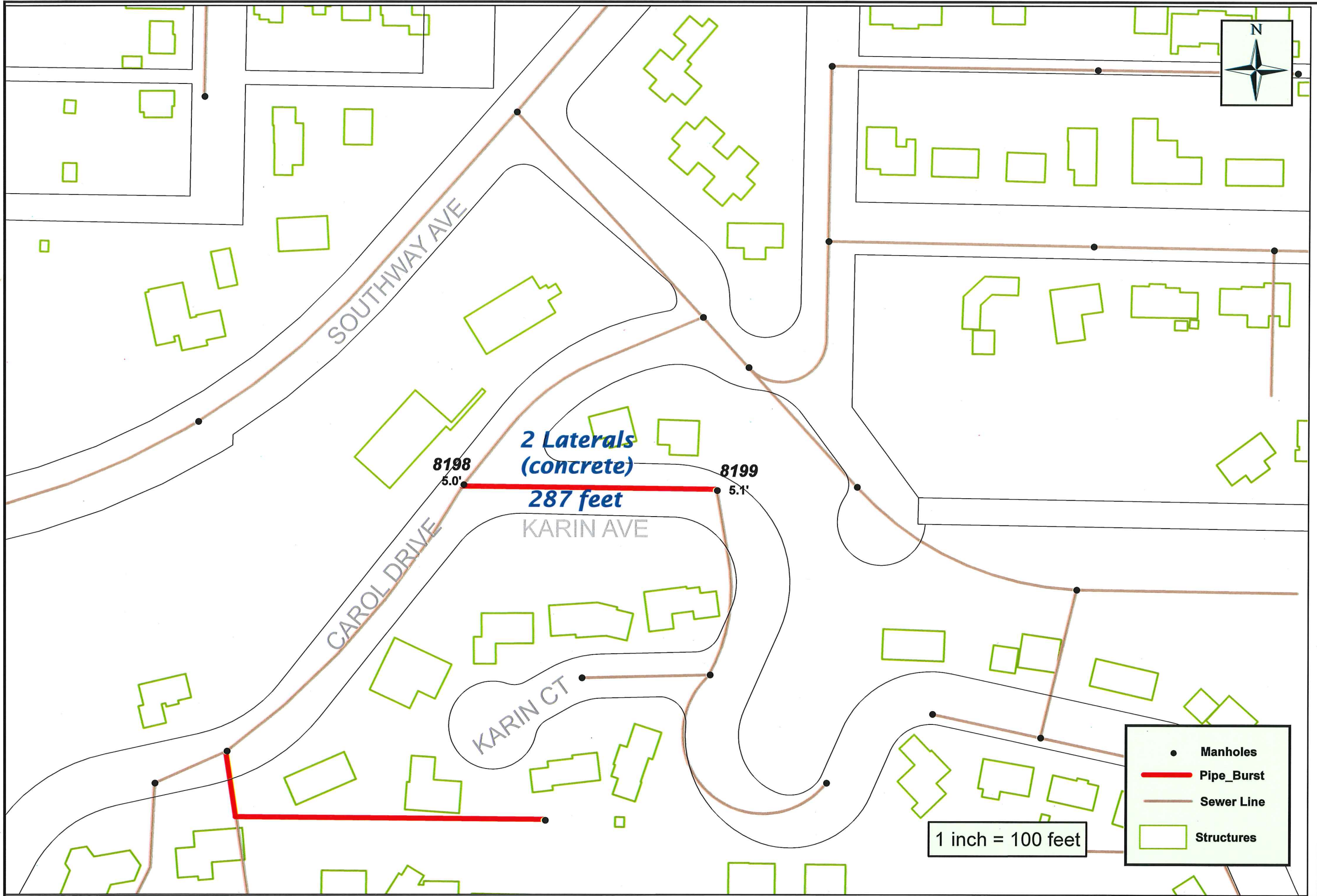




1 inch = 100 feet

●	Manholes
—	Pipe_Burst
—	Sewer Line
□	Structures

		DEPARTMENT Wastewater Services 2009 Sewer Rehab										
CITY OF LEWISTON PUBLIC WORKS DEPARTMENT ENGINEERING SERVICES 134 F STREET LEWISTON, ID 83501 (208) 746-3671 FAX (208) 746-9667	REVISIONS <table border="1"> <thead> <tr> <th>NO.</th> <th>DATE</th> <th>FILENAME</th> <th>DESCRIPTION</th> <th>BY</th> </tr> </thead> <tbody> <tr> <td> </td> <td> </td> <td> </td> <td> </td> <td> </td> </tr> </tbody> </table>	NO.	DATE	FILENAME	DESCRIPTION	BY						DESIGNED BY: SP DRAWN BY: DSP CHECKED BY: SM JOB NO.:
NO.	DATE	FILENAME	DESCRIPTION	BY								
SCALE: None DATE: 07/20/2009 DRAWING NO.: PRELIMINARY SHEET 3 of 4												



- Manholes
- Pipe_Burst
- Sewer Line
- Structures

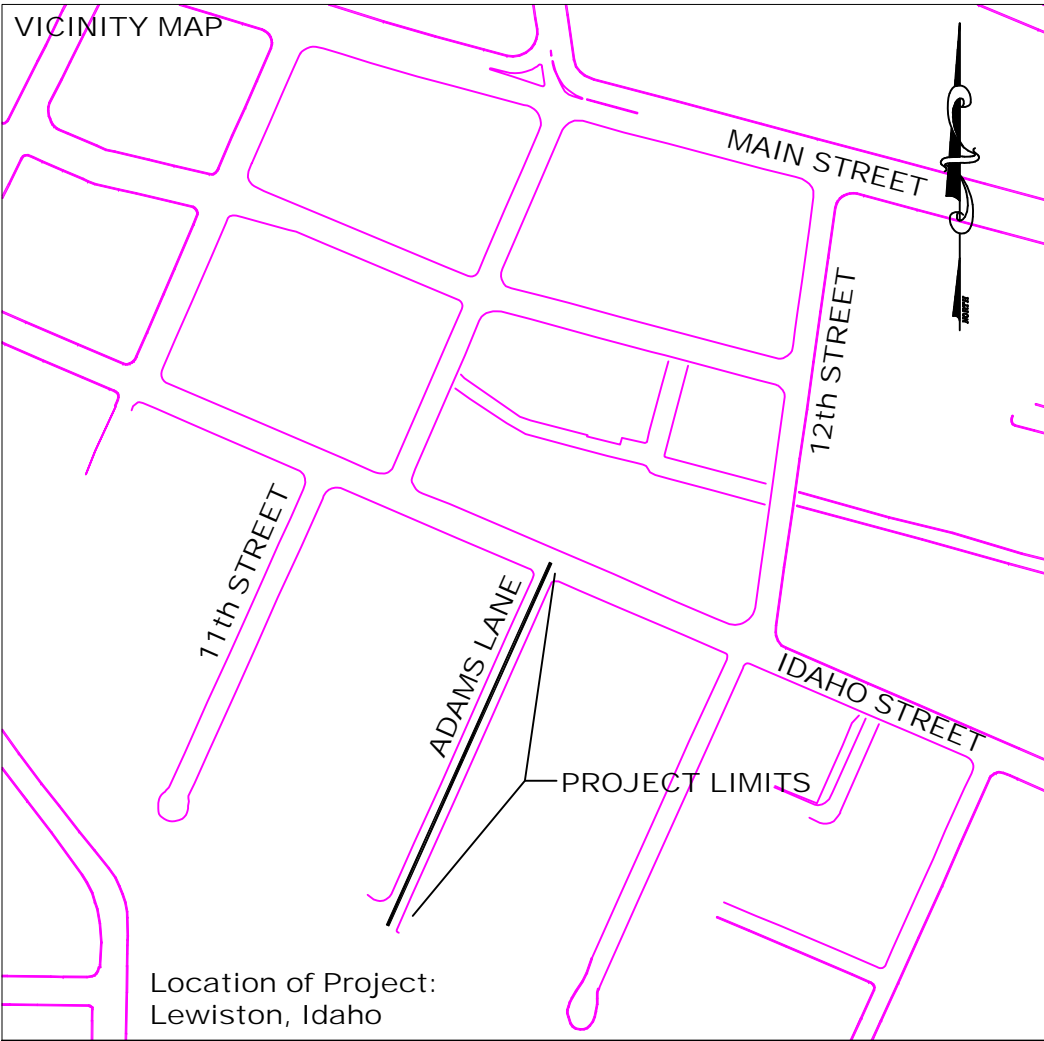
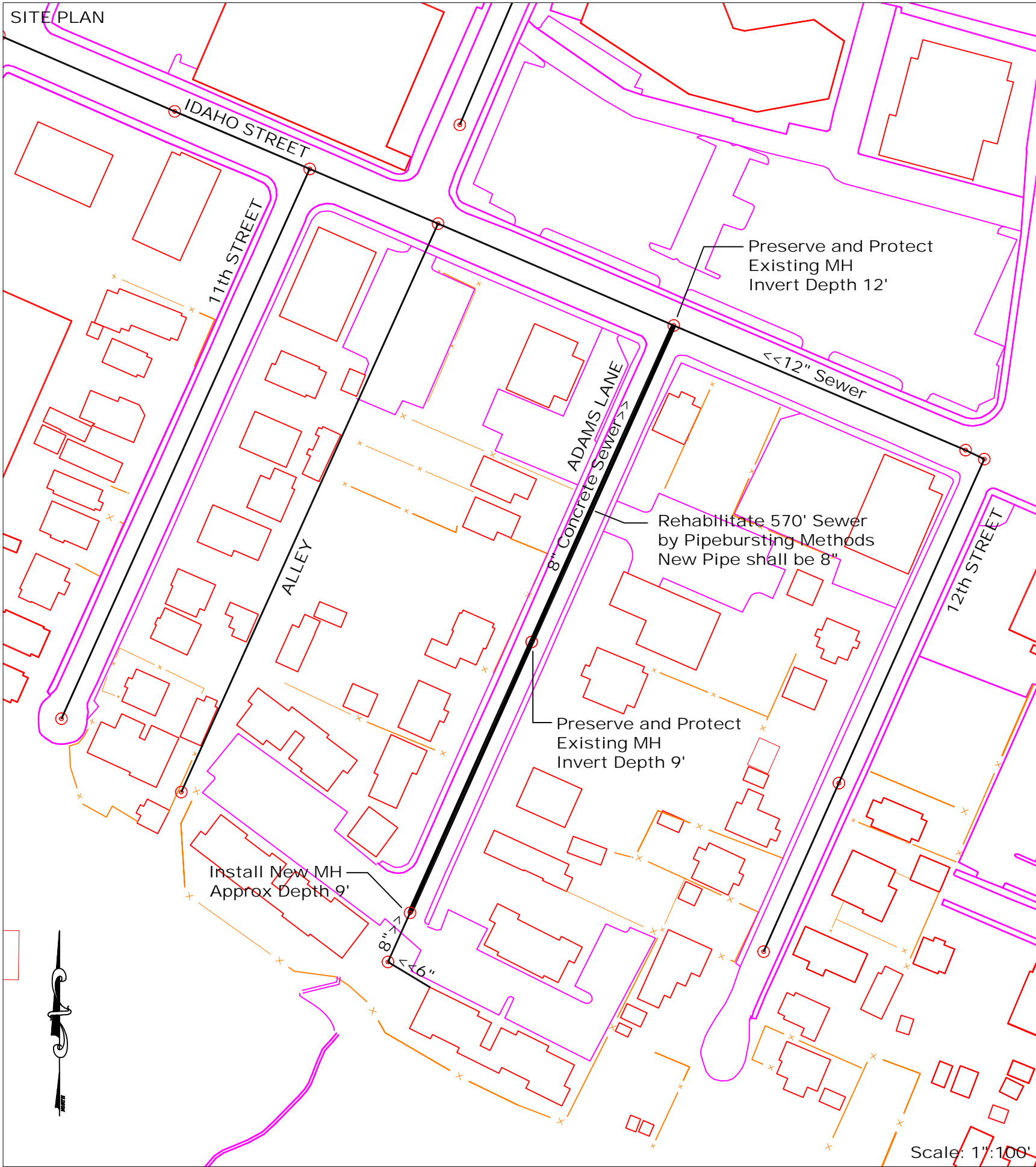
CITY OF LEWISTON
 PUBLIC WORKS DEPARTMENT
 ENGINEERING SERVICES
 134 F STREET LEWISTON ID 83501
 (208) 746-9671 FAX (208) 746-9667

DEPARTMENT
 Wastewater Services
 2009 Sewer Rehab

NO.	DATE	FILENAME	DESCRIPTION	BY

DESIGNED BY:	SP	SCALE:	Name
DRAWN BY:	DSP <td>DATE:</td> <td>07/20/2009</td>	DATE:	07/20/2009
CHECKED BY:	SM <td>DRAWING NO.:</td> <td>PRELIMINARY</td>	DRAWING NO.:	PRELIMINARY
JOB NO.:		SHEET	4 of 4





- SHEET INDEX**
1. CONTRACTORS SHALL BE RESPONSIBLE TO CONTACT THE LOCAL ONE-CALL SYSTEM AT 811 AT LEAST TWO DAYS PRIOR TO ANY DIGGING.
 2. ALL TRENCHES AND EXCAVATED AREAS SHALL BE BACKFILLED TO FINISH GRADE WITH CRUSHED AGGREGATE BACKFILL IN ACCORDANCE WITH STANDARD DRAWING 1-6: BACKFILL CLASS D. THE CONTRACTOR WILL NOT BE REQUIRED TO PROVIDE RESTORATION OF ASPHALT SURFACES DISTURBED AS A PART OF EXCAVATIONS.
 3. ALL DISTURBED AREAS SHALL BE RESTORED TO THEIR ORIGINAL CONDITION.

<p>CITY OF LEWISTON PUBLIC WORKS DEPARTMENT ENGINEERING SERVICES 184 F STREET LEWISTON, ID 83501 (208) 746-8671 FAX (208) 746-0667</p>		<p>SEWER DEPARTMENT SITE PLAN & VICINITY MAP 2010 Sewer Rehabilitation Adams Lane</p>		<p>DESIGNED BY: S.M. DRAWN BY: S.M. CHECKED BY: M.D. JOB NO.:</p>	<p>SCALE: 1"=100' (11x17) DATE: Aug 2010 DRAWING NO.: siteplan.dwg SHEET 1 OF 1</p>							
<p>REVISIONS</p> <table border="1"> <thead> <tr> <th>NO.</th> <th>DATE</th> <th>FILENAME</th> <th>DESCRIPTION</th> </tr> </thead> <tbody> <tr> <td> </td> <td> </td> <td> </td> <td> </td> </tr> </tbody> </table>		NO.	DATE	FILENAME	DESCRIPTION					<p>BY</p>		
NO.	DATE	FILENAME	DESCRIPTION									