

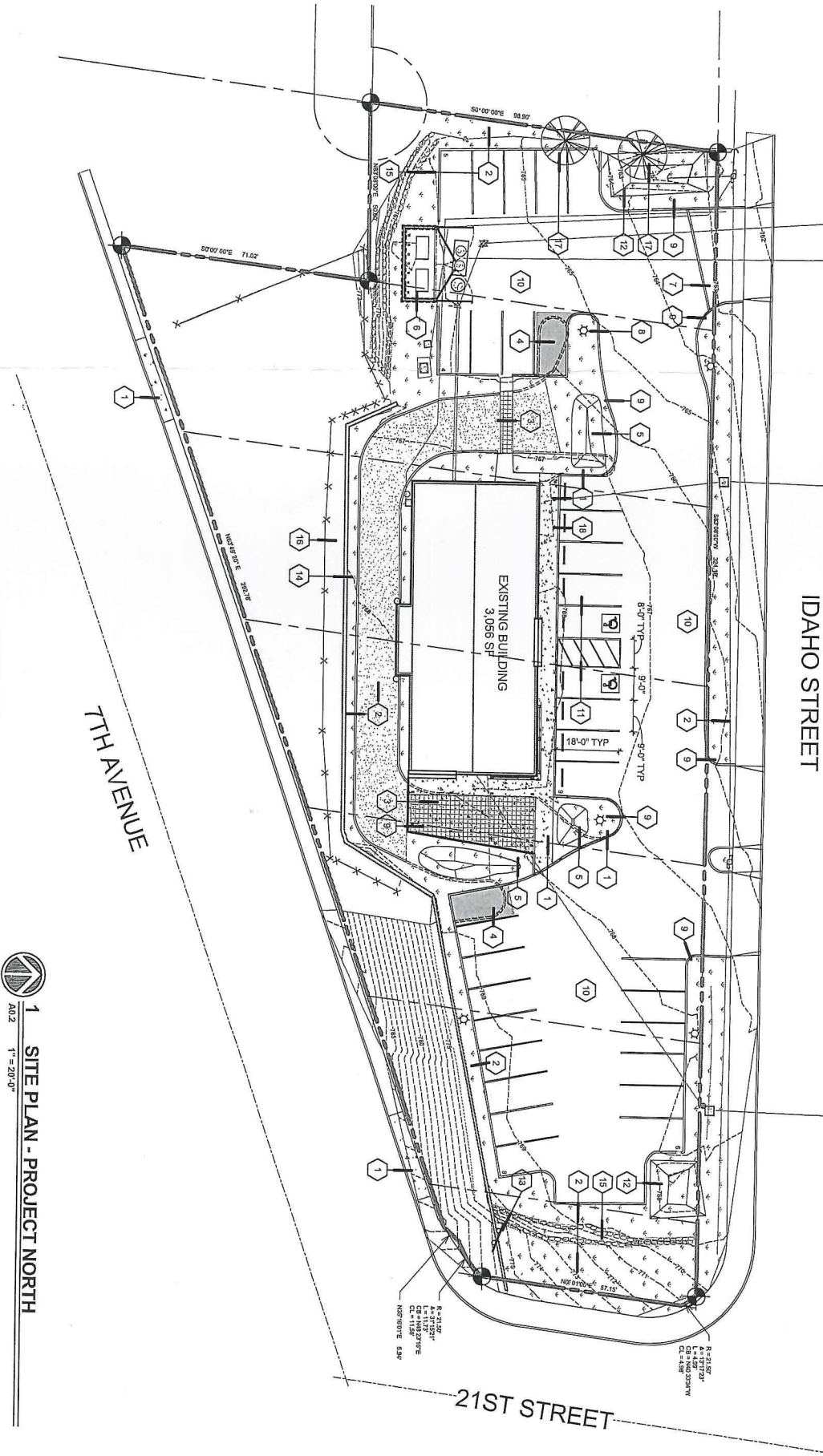
LICENSED  
ARCHITECT  
NO. 25537  
RUSSELL A. WOLFE  
STATE OF IDAHO

SITE PLAN

- GENERAL NOTES**
- ALL COMPONENTS DAMAGED DURING CONSTRUCTION SHALL BE RESTORED TO ORIGINAL, OR BETTER CONDITION WITHOUT COST TO THE OWNER.
  - ALL DIMENSIONS FROM FACE OF STUD AND/OR GRID, U.O.M.
  - U.O.M., ALL INFORMATION EXIST TO REMAIN
  - PATCH AND REPAIR ASPHALT AS REQD FOR CONCRETE CURB REPLACEMENT.
  - SEE LANDSCAPE PLAN FOR EXTENTS OF NEW LANDSCAPE WORK.
  - COORDINATE ALL NEW CURB LOCATIONS, SIDEWALK REPLACEMENT AND NEW SWALES WITH CIVIL DRAWINGS.
- KEY NOTES**
- NEW CONCRETE SIDEWALK
  - NEW LANDSCAPING AREA PER L1.1
  - NEW CONCRETE PAVERS
  - NEW ASPHALT PAVING
  - NEW DRAINAGE SWALE. SEE C1.3
  - NEW GARBAGE/RECYCLING ENCLOSURE AND CONCRETE PAD FOR 8 YD GARBAGE CONTAINER AND 6 YD RECYCLING NEW TRENCH OPENAL. SEE C1.4
  - RELOCATED LIGHT POLE
  - NEW CONCRETE CURB
  - SPAL AND COAT EXISTING ASPHALT
  - RESTRIE PARKING AND ADA STALLS OVER ORIGINAL LOCATIONS
  - EXISTING DRAINAGE SWALE TO BE REFURISHED PER C1.3
  - EXISTING MONUMENT SIGN
  - EXISTING CMU RETAINING WALL
  - EXISTING BOULDER RETAINING WALL
  - EXISTING FENCE
  - EXISTING TREE
  - EXISTING WHEEL STOP

SITE PLAN LEGEND

- NEW LANDSCAPING AREA PER L1.1
- NEW RIVER ROCK PER L1.1
- NEW CONCRETE SIDEWALK
- NEW CONCRETE PAVERS
- NEW ASPHALT PAVING
- EXISTING ELECTRIC METER
- EXISTING ELECTRICAL TRANSFORMER
- EXISTING MONUMENT SIGN
- EXISTING LIGHT POLE
- EXISTING UTILITY POLE
- SEWER MANHOLE COVER
- INTERCEPTOR COVER
- EXISTING VALVE
- EXISTING WATER MAIN
- EXISTING TREE
- CONTOURS



1 SITE PLAN - PROJECT NORTH  
A0.2 1" = 20'-0"

**WAG**  
Wolfe Architectural Group  
1015 N. Callipe Street, Suite 'B'  
Spokane, Washington 99201  
P 509.455.6939 F 509.455.3533  
www.wagarch.com

MOD PIZZA LEWISTON  
LEWISTON 600, LLC  
600 21st Street  
Lewiston, ID 83501

Project No.: 18.141  
Date: 12.19.2016  
Drawn By: NCB  
Checked By: RLW

Sheet No.

A0