

CONSTRUCTION DRAWINGS

DELSOL LANE WATERLINE REPLACEMENT

SW1/4, SE1/4, SECTION 31, T.36N., R.5W., B.M.
CITY OF LEWISTON, NEZ PERCE COUNTY, IDAHO

SHEET INDEX

- | | |
|-----|--|
| | GENERAL |
| C-1 | COVER AND SHEET INDEX |
| C-2 | LEGEND, GENERAL NOTES & QUANTITY SUMMARY |
| C-3 | DETAILS |
| C-4 | PLAN & PROFILE |
| C-5 | PLAN & PROFILE |
| C-6 | PLAN & PROFILE |
| C-7 | PLAN & PROFILE |

SURVEY CONTROL

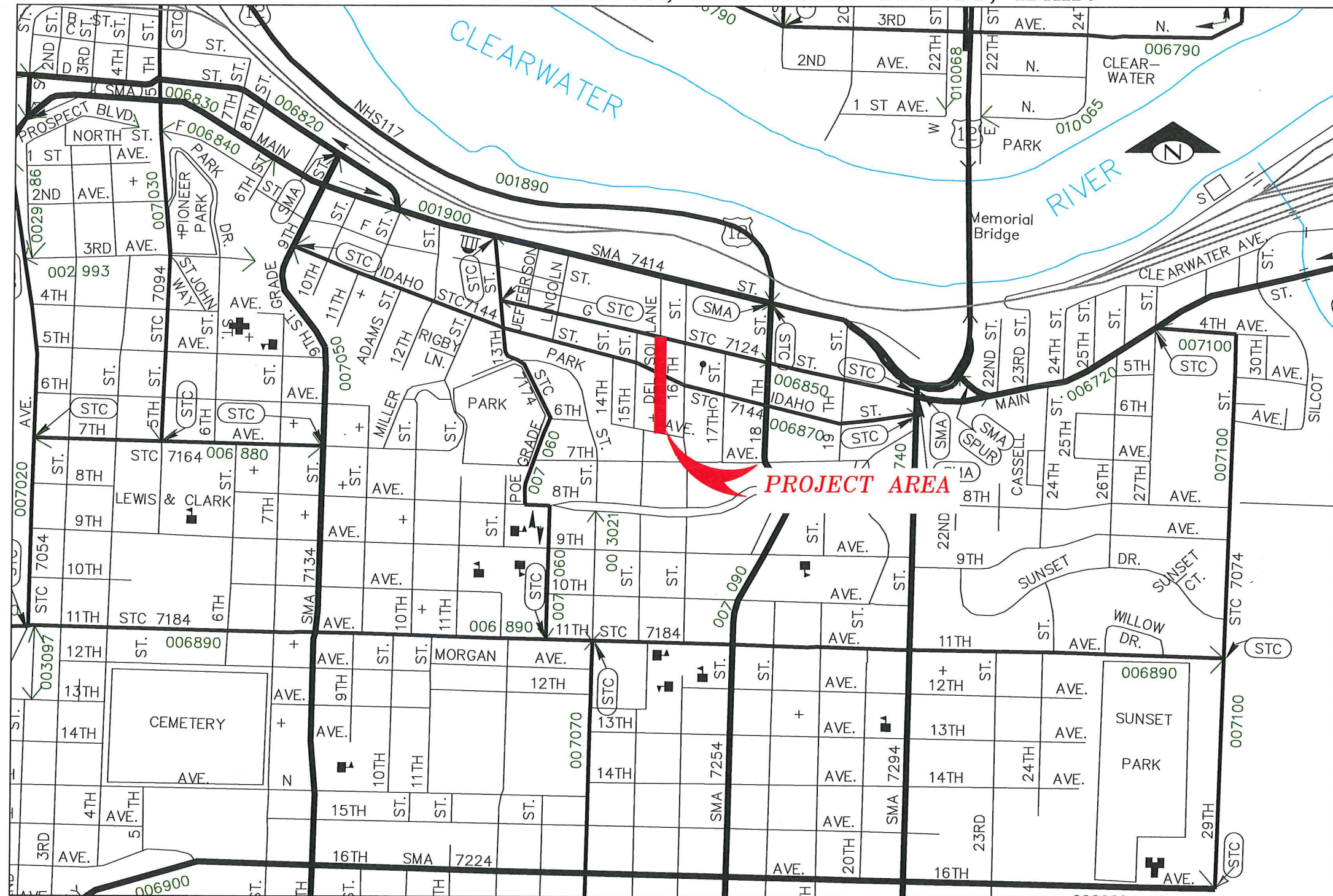
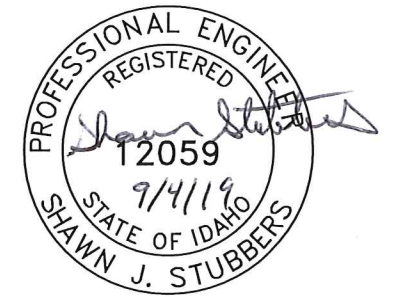
1. City of Lewiston Survey Control Network 2006, Reference the Record of Survey filed under Instrument Number 738222 of Nez Perce County records for Control Point locations and information.

AGENCY TELEPHONE NUMBERS

| | |
|--|--------------|
| CITY OF LEWISTON PUBLIC WORKS DEPARTMENT | 208 746-1316 |
| STREETS ON CALL | 208 791-2311 |
| WASTEWATER | 208 791-0986 |
| AVISTA UTILITIES | 208 798-1473 |
| CABLEONE | 208 746-3325 |
| CENTURYLINK | 208 798-8380 |
| DIGLINE UNDERGROUND UTILITY LOCATE | 811 |



THE LOCATION OF EXISTING UTILITIES ON THESE PLANS ARE APPROXIMATE AND ARE SHOWN FOR INFORMATION ONLY. THE CONTRACTOR SHALL PERFORM A SEPARATE INVESTIGATION IN THE FIELD TO DETERMINE THE EXACT LOCATION OF ALL EXISTING UNDERGROUND UTILITIES. INFORMATION REGARDING THE LOCATION OF EXISTING UNDERGROUND UTILITIES CAN BE OBTAINED FROM CALLING DIG LINE AT 811.



| REVISIONS | | | |
|---------------|------|-------------|----|
| NO. | DATE | DESCRIPTION | BY |
| 90% SUBMITTAL | | | |



215 "D" Street, Lewiston, ID 83501-1930
Phone: 208.746.1316 Fax: 208.746.5595

DELSOL LANE WATER LINE REPLACEMENT
IDAHO STREET TO 6TH STREET

COVER & INDEX SHEET

| |
|----------------------|
| SCALE: 1" = 500' |
| DESIGNED BY: S.J.S. |
| DRAWN BY: B.D.S. |
| CHECKED BY: ??? |
| SHEET SET: DELSOL-19 |
| DATE: 09-03-2019 |
| DRAWING NO.: C-1 |
| SHEET 1 OF 7 |

File Name G:\Shared drives\Public Works CAPITAL\Water_Distribution\WRS01_Delsol_Main_2019\dwg\Production Drawings\Delsol-COVER.dwg Printed 9/3/2019 2:40 PM By Bruce Stewart

file Name G:\Shared drives\Public Works CAPITAL\Water_Distribution\WR501_Delsol_Main_2019\dwg\Production Drawings\Delsol-LEGEND.dwg Printed 9/3/2019 2:40 PM By Bruce Stewart

LEGEND

| | |
|---|--|
| <ul style="list-style-type: none"> STORM DRAIN MANHOLE CATCH BASIN SANITARY SEWER MANHOLE GAS VALVE GATE VALVE FIRE HYDRANT WATER METER IRRIGATION CONTROL BOX IRRIGATION VALVE WATER MANHOLE WATER VAULT | <ul style="list-style-type: none"> SURVEY MONUMENT IN CASE CENTERLINE MONUMENT PROPERTY PIN ELECTRIC VAULT POWER POLE LIGHT POLE GUY ANCHOR TELEPHONE PEDESTAL TELEPHONE MANHOLE / VAULT |
|---|--|

| | |
|--|--|
| <ul style="list-style-type: none"> CENTERLINE RIGHT-OF-WAY EXISTING WATERLINE EXISTING LOID DOMESTIC WATERLINE (SIZE) EXISTING LOID IRRIGATION LINE (SIZE) EXISTING SANITARY SEWER EXISTING GAS EXISTING TELEPHONE EXISTING FIBER OPTIC EXISTING STORM DRAIN EXISTING UG POWER EXISTING CONCRETE/SIDEWALK EXISTING CURB & GUTTER | <ul style="list-style-type: none"> REMOVAL OF BITUMINOUS SURFACE / TYPE "P" SURFACE RESTORATION AREA PROPOSED CURB & GUTTER PROPOSED WATERLINE |
|--|--|

CONSTRUCTION NOTES

GENERAL:

1. ALL CONSTRUCTION WORK SHALL CONFORM TO THE CITY OF LEWISTON STANDARD DRAWINGS AND THE 2017 IDAHO STANDARDS SPECIFICATIONS FOR PUBLIC WORKS CONSTRUCTION (ISPCWC). IN THE CASE OF CONFLICT, THE PROJECT PLANS AND TECHNICAL SPECIFICATIONS WILL PREVAIL OVER CITY STANDARDS, WHICH WILL PREVAIL OVER ISPCWC.
2. A CITY RIGHT-OF-WAY PERMIT IS REQUIRED FOR ALL WORK WITHIN THE PUBLIC RIGHT-OF-WAY.
3. WORK SUBJECT TO APPROVAL MUST BE APPROVED PRIOR TO (A) BACKFILLING TRENCHES FOR PIPE: (B) PLACING OF AGGREGATE BASE: (C) PLACING OF CONCRETE: (D) PLACING OF ASPHALT PAVING.
4. INSPECTION, APPROVAL AND FINAL ACCEPTANCE OF ALL CONSTRUCTION SHALL BE BY THE PUBLIC WORKS DEPARTMENT, AND THEIR DECISION SHALL BE FINAL. SUCH INSPECTION SHALL NOT RELIEVE THE CONTRACTOR FROM THE RESPONSIBILITY OF PERFORMING THE WORK IN AN ACCEPTABLE MANNER IN ACCORDANCE WITH THE APPROVED CONSTRUCTION PLANS.
5. CONTRACTORS SHALL BE RESPONSIBLE FOR COORDINATING WITH AFFECTED FRANCHISE UTILITIES DURING CONSTRUCTION.
6. PROPERTIES IMPACTED BY CONSTRUCTION ACTIVITIES SHALL BE NOTIFIED A MINIMUM OF TWO (2) DAYS PRIOR TO DISRUPTING THEIR WATER SERVICE OR ACCESS TO THEIR PROPERTY.
7. UNDERGROUND UTILITIES SHALL BE VERIFIED BY NOTIFYING THE ONE CALL (811) THREE (3) WORKING DAYS IN ADVANCE OF PERFORMING EXCAVATION WORK. PROTECT UTILITY MARKINGS DURING CONSTRUCTION. DETERMINE BY HAND DIGGING, IN THE AREA (24 INCHES) OR LESS FROM THE FACILITIES, THE PRECISE ACTUAL LOCATIONS OF UNDERGROUND FACILITIES THAT HAVE BEEN MARKED. COMPLY WITH SECTION 55-2201 OF IDAHO CODE ENTITLED "UNDERGROUND FACILITIES DAMAGE PREVENTION".
8. CONTRACTOR MUST SUBMIT A TRAFFIC CONTROL PLAN AT LEAST 5 WORKING DAY IN ADVANCE OF ANTICIPATED START DATE. APPROVAL OF THE TRAFFIC CONTROL PLAN IS REQUIRED BEFORE WORK BEGINNING ANY WORK.

WATER:

1. CONSTRUCTION OF POTABLE WATER LINES SHALL CONFORM TO THE STANDARDS IN THE "IDAHO RULES FOR PUBLIC DRINKING WATER SYSTEMS (IDAPA 58.01.08).
2. THE CONTRACTOR SHALL BE RESPONSIBLE FOR NOTIFYING WATER USERS PRIOR TO DISRUPTING SERVICE. NO USER SHALL BE WITHOUT WATER SERVICE OVERNIGHT OR FOR MORE THAN 4 HOURS DURING NORMAL BUSINESS HOURS.
3. ALL WATER WORKS COMPONENTS SHALL BE ANSI/NSF 61 CERTIFIED, AND MUST MEET ALL AMERICAN WATER WORKS ASSOCIATION (AWWA) AND STANDARD REQUIREMENTS OF IDAPA 58.01.08.
4. THE NEW WATER MAIN SHALL BE CONSTRUCTED IN ACCORDANCE WITH THESE PLANS AND THE CITY OF LEWISTON STANDARD DRAWINGS. ALL WORK SHALL ALSO BE IN ACCORDANCE WITH THE SPECIFICATIONS OF THE IDAHO STANDARDS FOR PUBLIC WORKS CONSTRUCTION. ALL WORK SHALL BE SUBJECT TO ACCEPTANCE BY THE CITY OF LEWISTON PURSUANT TO THE ENGINEERING DEPARTMENT'S CURRENT INSPECTION CHECKLIST.
5. DISINFECTION SHALL BE BY THE CITY WATER DIVISION.
6. ALL FITTINGS AND VALVES SHALL HAVE MJ JOINTS UNLESS MULTIPLE FITTINGS AND/OR VALVES ARE TOGETHER IN A SINGLE ASSEMBLY, IN WHICH CASE, COMMON JOINTS BETWEEN THEM SHALL BE FLANGED. MJ TO MJ CONNECTIONS SHALL INCLUDE A FOSTER ADAPTER IN BETWEEN. ALL FITTINGS SHALL HAVE RESTRAINED JOINTS. NOTIFY THE ENGINEER IF ADDITIONAL HORIZONTAL OR VERTICAL FITTINGS ARE NECESSARY.

ROADWAY:

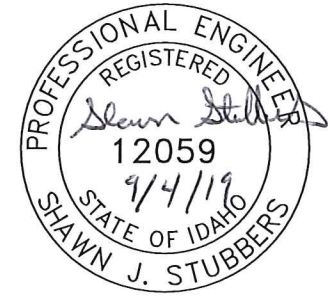
1. ALL ASPHALT JOINTS SHALL BE SAW CUT UNLESS SPECIFICALLY NOTED OTHERWISE IN THE DRAWINGS.
2. ALL ASPHALT SURFACES AND ADJACENT PAVEMENT, LONGITUDINAL JOINTS, EDGES OF SURFACE UTILITIES AND CURB EDGES SHALL BE TACKED.
3. ALL UTILITIES IN THE PUBLIC RIGHT-OF-WAY SHALL BE ADJUSTED TO MATCH FINISH GRADE. CUTTING AND PAVEMENT PATCHING IS NOT ALLOWED. IF ADJUSTED PRIOR TO PAVING THE UTILITY MUST BE PAVED AROUND. IF ADJUSTED AFTER PAVING CONCRETE COLLARS CONFORMING TO CITY STANDARD DRAWINGS 1-10 AND 5-6 ARE REQUIRED.

PUBLIC SURVEY MONUMENT:

ALL PUBLIC AND PRIVATE LAND SURVEY MONUMENTS DISTURBED BY CONSTRUCTION ACTIVITIES MUST BE REFERENCED BY AN IDAHO LICENSED PROFESSIONAL LAND SURVEYOR PRIOR TO DISTURBANCE. ANY DISTURBED PUBLIC AND PRIVATE MONUMENTS SHALL BE RE-ESTABLISHED BY AN IDAHO LICENSED PROFESSIONAL LAND SURVEYOR BEFORE PROJECT COMPLETION. IF MONUMENTS ARE FOUND DURING CONSTRUCTION THAT ARE NOT SHOWN ON THE CONSTRUCTION ON PLANS, THE MONUMENTS MUST BE REFERENCED AND RE-ESTABLISHED BY AN IDAHO LICENSED PROFESSIONAL LAND SURVEYOR. SECTION CORNER MONUMENTS DISTURBED AND REESTABLISHED AFTER CONSTRUCTION SHALL HAVE CORNER RECORDS COMPLETED AND RECORDED AT THE NEZ PERCE COUNTY RECORDERS OFFICE.

QUANTITY SUMMARY

| ITEM NO. | ITEM DESCRIPTION | UNIT | ESTIMATED QUANTITY |
|--------------|---|------|--------------------|
| 201.4.1.D.1 | Removal of Bituminous Surface | SY | 559 |
| 201.4.1.E.1 | Removal of Curb and Gutter | LF | 0 |
| 201.4.1.E.2 | Removal Water Main & Appurtenances | LF | 0 |
| 307.4.1.G.1 | Main Line Type "P" Surface Restoration (3"min, SP-2, 1/2" Agg.) | SY | 559 |
| 401.4.1.A.1 | Water Main Pipe - 6" DI, Class 350 | LF | 0 |
| 401.4.1.A.2 | Water Main Pipe - 8" C900 DR25 | LF | 814 |
| 401.4.1.C.1 | Connect to Existing - 6" | EA | 1 |
| 401.4.1.C.2 | Connect to Existing - 8" | EA | 1 |
| 402.4.1.A.1 | Valve - 6" Gate | EA | 1 |
| 402.4.1.A.2 | Valve - 8" Gate | EA | 3 |
| 403.4.1.A.1 | Hydrant | EA | 0 |
| 404.4.1.A.1 | Water Service Connection - 1" | EA | 22 |
| 404.4.1.B.1 | Water Service Pipe - 1" | LF | 67 |
| 706.4.1.A.5 | Standard 6-Inch Vertical Curb and Gutter | LF | 0 |
| 1103.4.1.A.1 | Construction Traffic Control | LS | 0 |
| 2010.4.1.A.1 | Mobilization | LS | 0 |
| SP 404A | Temporary Service Connection | EA | 22 |
| SP 507B | Sewer Main Crossing | EA | 4 |
| SP 2001A | Construction Surveying | LS | 0 |



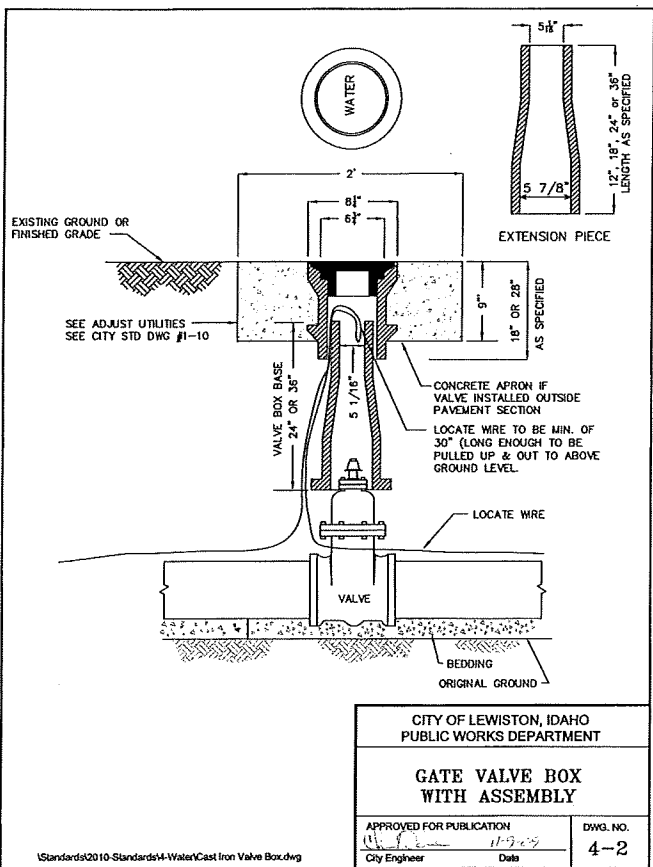
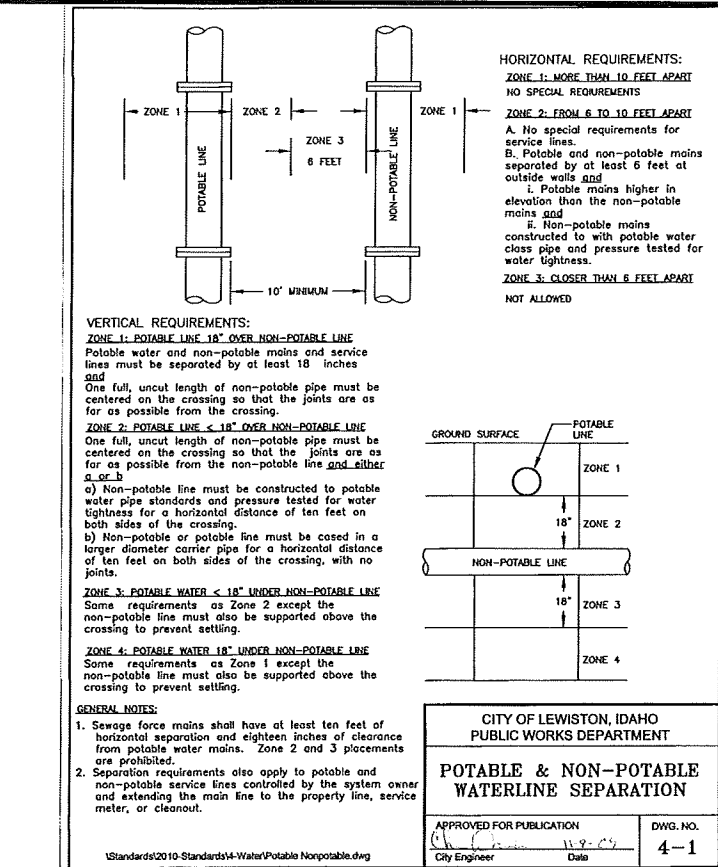
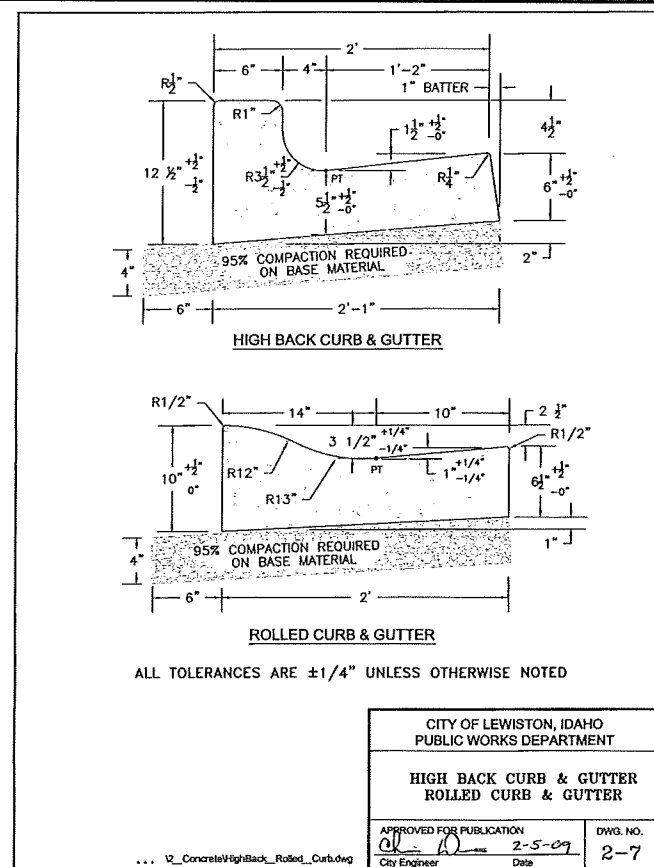
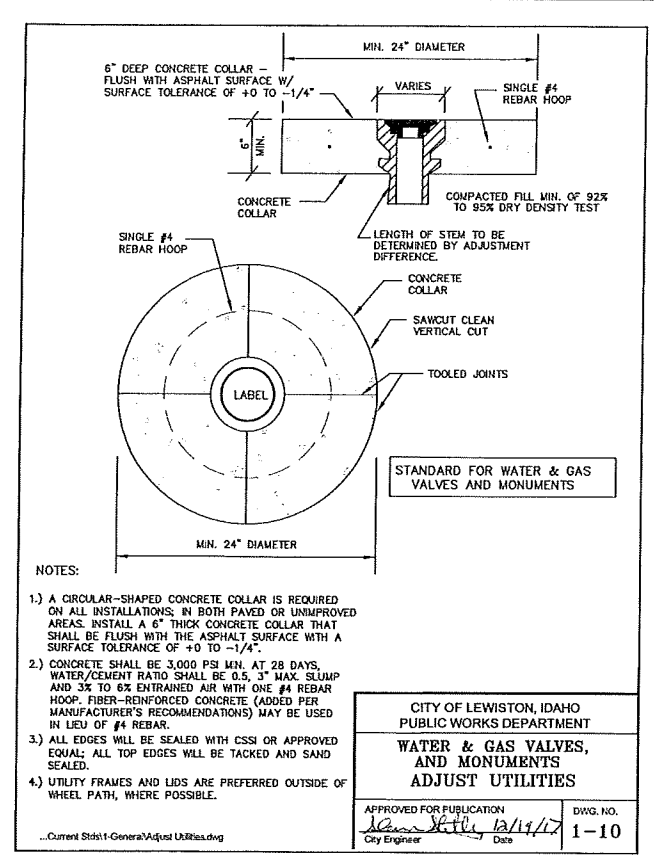
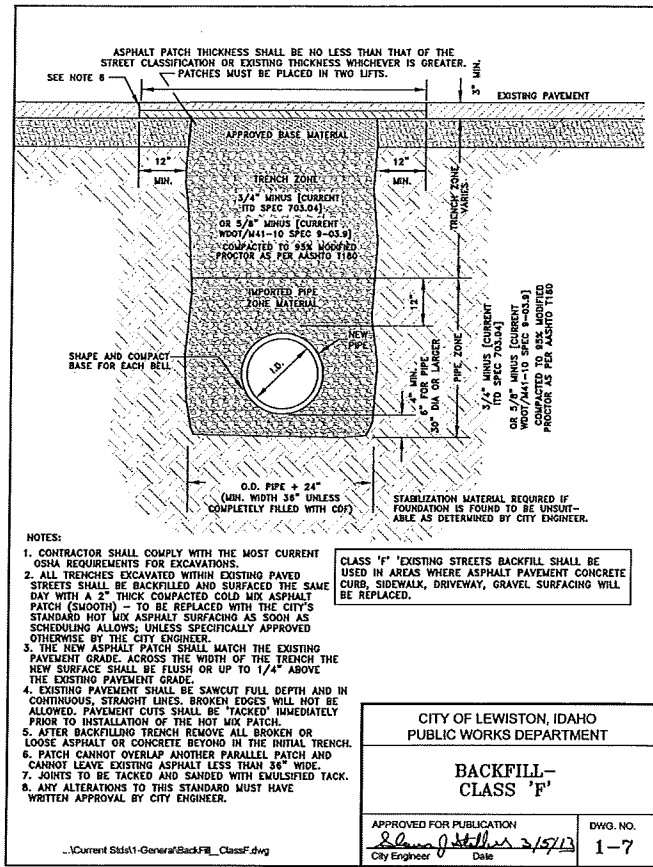
| REVISIONS | | | |
|---------------|------|-------------|----|
| NO. | DATE | DESCRIPTION | BY |
| 90% SUBMITTAL | | | |



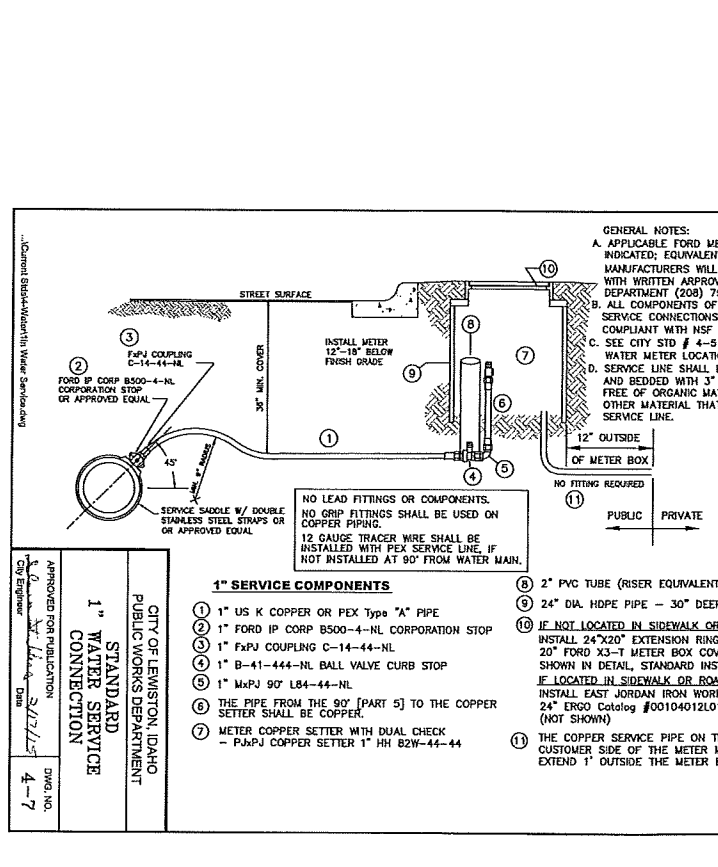
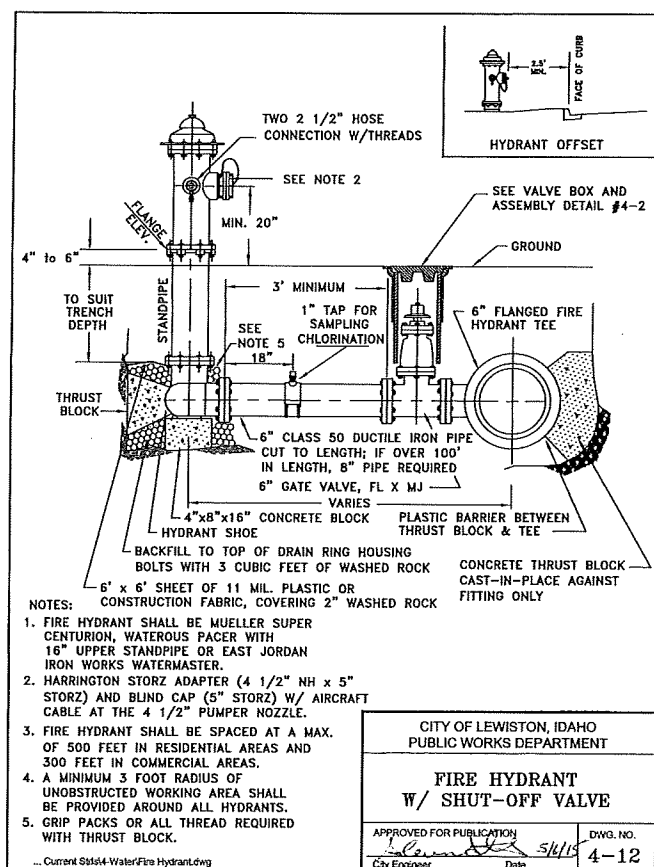
DELSOL LANE WATER LINE REPLACEMENT IDAHO STREET TO 6TH STREET

LEGEND, GENERAL NOTE & QUANTITY SUMMARY

| |
|----------------------|
| SCALE: N/A |
| DESIGNED BY: S.J.S. |
| DRAWN BY: B.D.S. |
| CHECKED BY: ??? |
| SHEET SET: DELSOL-19 |
| DATE: 09-03-2019 |
| DRAWING NO.: C-2 |



| Fitting Size | BEARING AREA OF THRUST BLOCKS IN SQ. FT. | | | | |
|--------------|--|----------|--------------|--------------|-----|
| | 90° Bend Plugged Cross Tee | 45° Bend | 22 1/2° Bend | 11 1/4° Bend | --- |
| 4 | 1.0 | 1.4 | 1.0 | --- | --- |
| 6 | 2.1 | 3.0 | 1.6 | 1.0 | --- |
| 8 | 3.8 | 5.3 | 2.9 | 1.5 | 1.0 |
| 10 | 5.9 | 8.4 | 4.4 | 2.4 | 1.2 |
| 12 | 8.5 | 12.0 | 6.6 | 3.4 | 1.7 |
| 14 | 11.5 | 16.3 | 8.9 | 4.6 | 2.3 |
| 16 | 15.0 | 21.3 | 11.6 | 6.0 | 3.0 |
| 18 | 19.0 | 27.0 | 14.6 | 7.6 | 3.8 |
| 20 | 23.5 | 33.3 | 18.1 | 9.4 | 4.7 |
| 24 | 34.0 | 48.0 | 26.2 | 13.6 | 6.8 |



| NO. | DATE | DESCRIPTION | BY |
|-----|------|-------------|----|
| | | | |
| | | | |

| NO. | DATE | DESCRIPTION | BY |
|-----|------|-------------|----|
| | | | |
| | | | |

CITY OF LEWISTON
PUBLIC WORKS DEPARTMENT
1861

215 "D" Street, Lewiston, ID 83501-1930

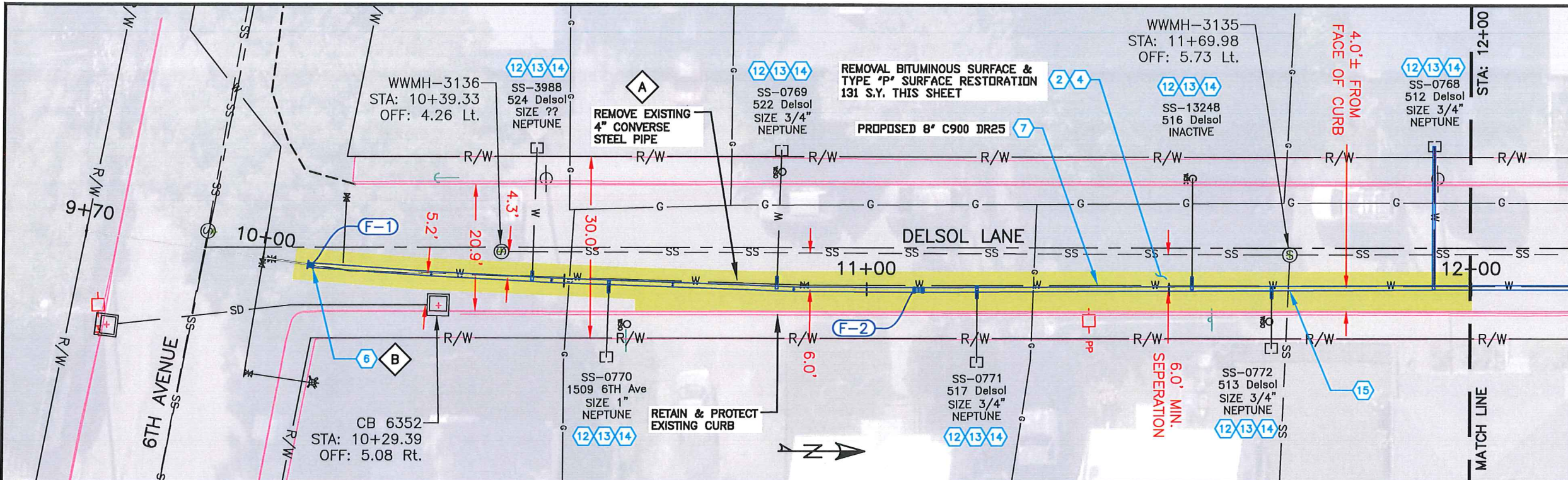
DELSOL LANE WATER LINE REPLACEMENT
IDAHO STREET TO 6TH STREET

DETAILS

SCALE: N/A
DESIGNED BY: S.J.S.
DRAWN BY: B.D.S.
CHECKED BY: ???
SHEET SET: DELSOL-19
DATE: 09-03-2019
DRAWING NO.: C-3

File Name: G:\Shared drives\Public Works CAPITAL\Water_Distribution\WRS01_Delsol_Main_2019\dwg\Production Drawings\DelSol-LEGEND.dwg Printed 9/3/2019 2:40 PM By: Bruce Stewart

file Name G:\Shared drives\Public Works CAPITAL\Water_Distribution\WRS01_Delsol_Main_2019\dwg\Production Drawings\Delsol_Plan-2.dwg Printed 9/3/2019 2:41 PM By Bruce Stewart

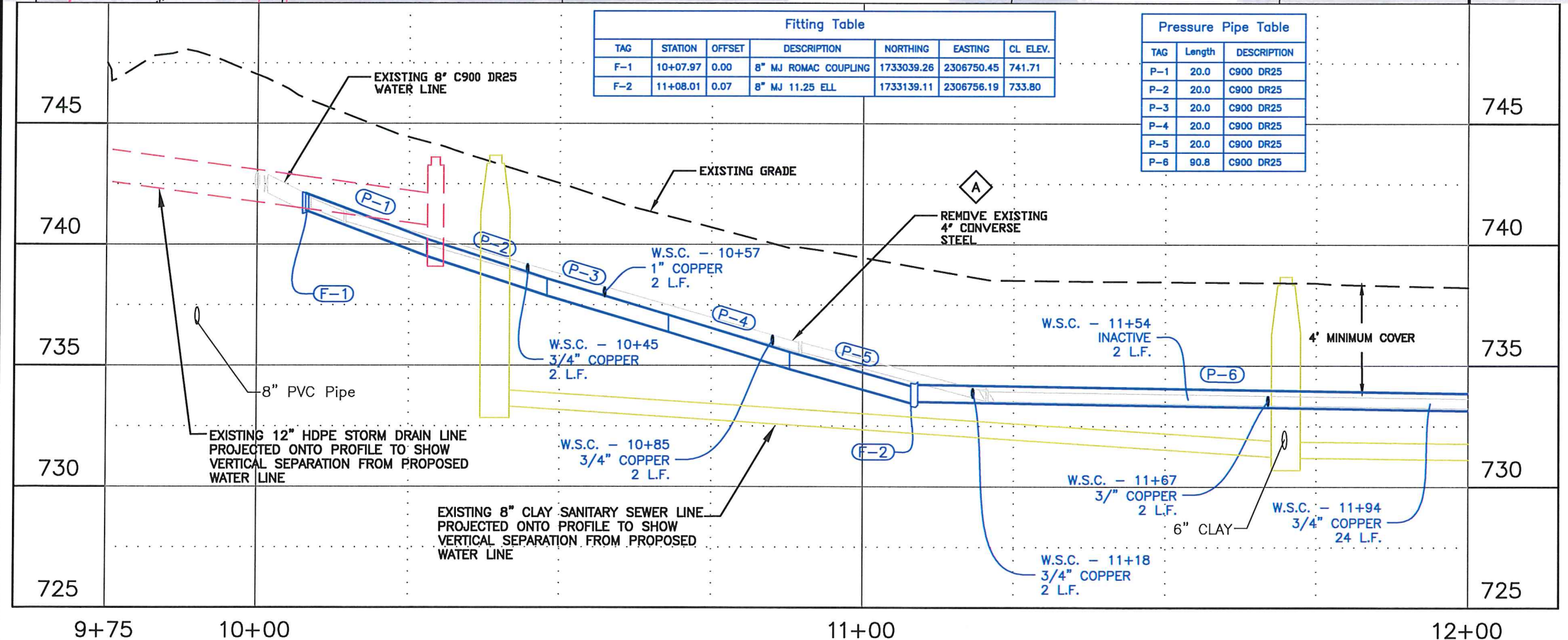


SPECIAL NOTES

A Remove existing pipe. Removal is incidental to the new components and no separate payment will be made.

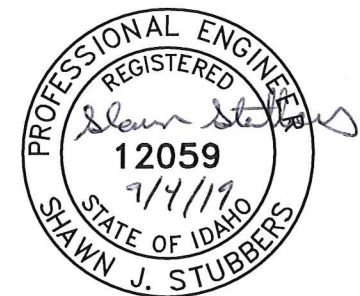
B Connect to existing pipe as directed by the project engineer.

| PAY ITEMS | QUANTITY |
|--|----------|
| 1 Removal of Obstruction, Ea., Item 201.4.1.C.1 | 0 EA. |
| 2 Removal of Bituminous Surface, Item 201.4.1.D.1B | 131 S.Y. |
| 3 Removal of Curb, Item 201.4.1.E.1 | 0 L.F. |
| 4 Mainline Type "P" Surface Restoration (Asphalt Roadway), Item 307.4.1.G.1 3" Minimum, SP2 1/2" Gradation | 131 S.Y. |
| 5 Connect to Existing Main - 6", Item 401.4.1.C.1A | 0 EA. |
| 6 Connect to Existing Main - 8", Item 401.4.1.C.1B | 1 EA. |
| 7 Water Main Pipe - 8" C900 DR25 Type, Item 401.4.1.A.1B | 191 L.F. |
| 8 Valve - Size 6", (See Appurtenance Table this sheet), Item 402.4.1.A.1A | 0 EA. |
| 9 Valve - Size 8", (See Appurtenance Table this sheet), Item 402.4.1.A.1B | 0 EA. |
| 10 Water Main Fitting - (See Fitting Table this sheet), Item 402.4.1.B.1 | 2 EA. |
| 11 Hydrant, (See Appurtenance Table this sheet) Item 403.4.1.A.1 | 0 EA. |
| 12 Connect to Existing Service Pipe, 3/4" or 1", Item 404.4.1.A.1 | 7 EA. |
| 13 Water Service Pipe 3/4" or 1", (See Profile this sheet for length), Item 404.4.1.B.1 | 14 L.F. |
| 14 Temporary Water Service Connection, Item SP-404A | 7 EA. |
| 15 Sewer Main Crossing, Item SP-507B | 1 EA. |



| TAG | STATION | OFFSET | DESCRIPTION | NORTHING | EASTING | CL. ELEV. |
|-----|----------|--------|----------------------|------------|------------|-----------|
| F-1 | 10+07.97 | 0.00 | 8" MJ ROMAC COUPLING | 1733039.26 | 2306750.45 | 741.71 |
| F-2 | 11+08.01 | 0.07 | 8" MJ 11.25 ELL | 1733139.11 | 2306756.19 | 733.80 |

| TAG | Length | DESCRIPTION |
|-----|--------|-------------|
| P-1 | 20.0 | C900 DR25 |
| P-2 | 20.0 | C900 DR25 |
| P-3 | 20.0 | C900 DR25 |
| P-4 | 20.0 | C900 DR25 |
| P-5 | 20.0 | C900 DR25 |
| P-6 | 90.8 | C900 DR25 |



| REVISIONS | | | |
|-----------|------|-------------|----|
| NO. | DATE | DESCRIPTION | BY |
| | | | |
| | | | |



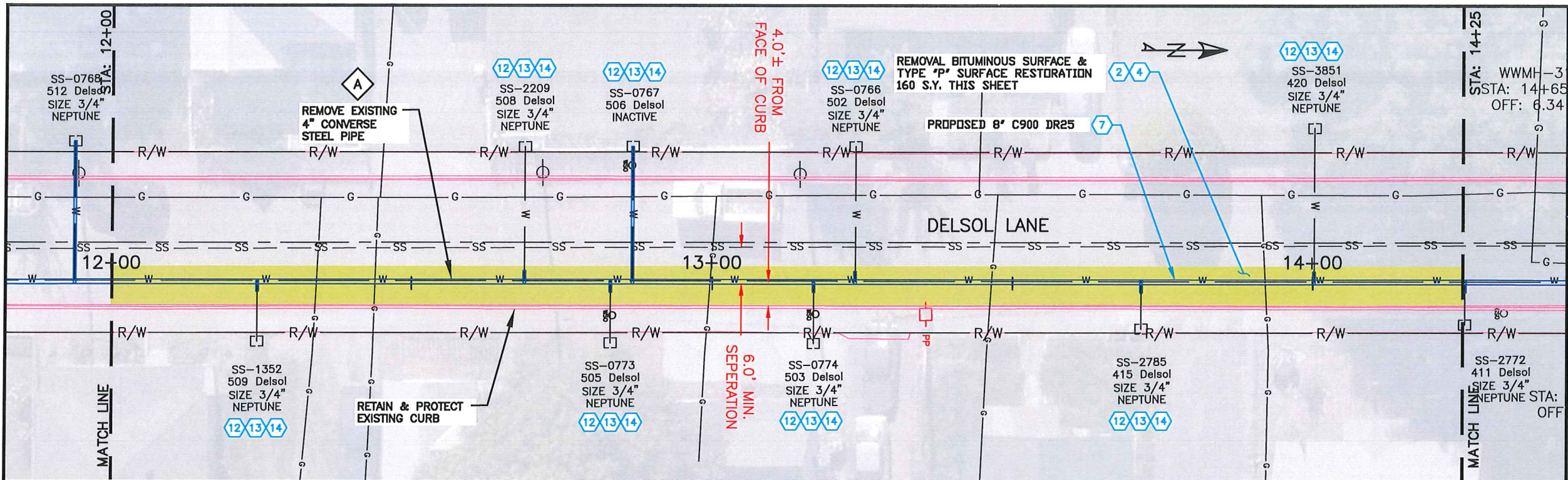
215 "D" Street, Lewiston, ID 83501-1930

**DELSOL LANE WATER LINE REPLACEMENT
IDAHO STREET TO 6TH STREET**

PLAN & PROFILE

| |
|----------------------|
| SCALE: 1" = 20' |
| DESIGNED BY: S.J.S. |
| DRAWN BY: B.D.S. |
| CHECKED BY: ??? |
| SHEET SET: DELSOL-19 |
| DATE: 09-03-2019 |
| DRAWING NO.: C-4 |

File Name G:\Shared drives\Public Works CAPITAL\Water_Distribution\VR501_Delsol_Main 2019\dwg\Production Drawings\Delsol_Plan-2.dwg Printed 9/3/2019 2:41 PM By Bruce Stewart

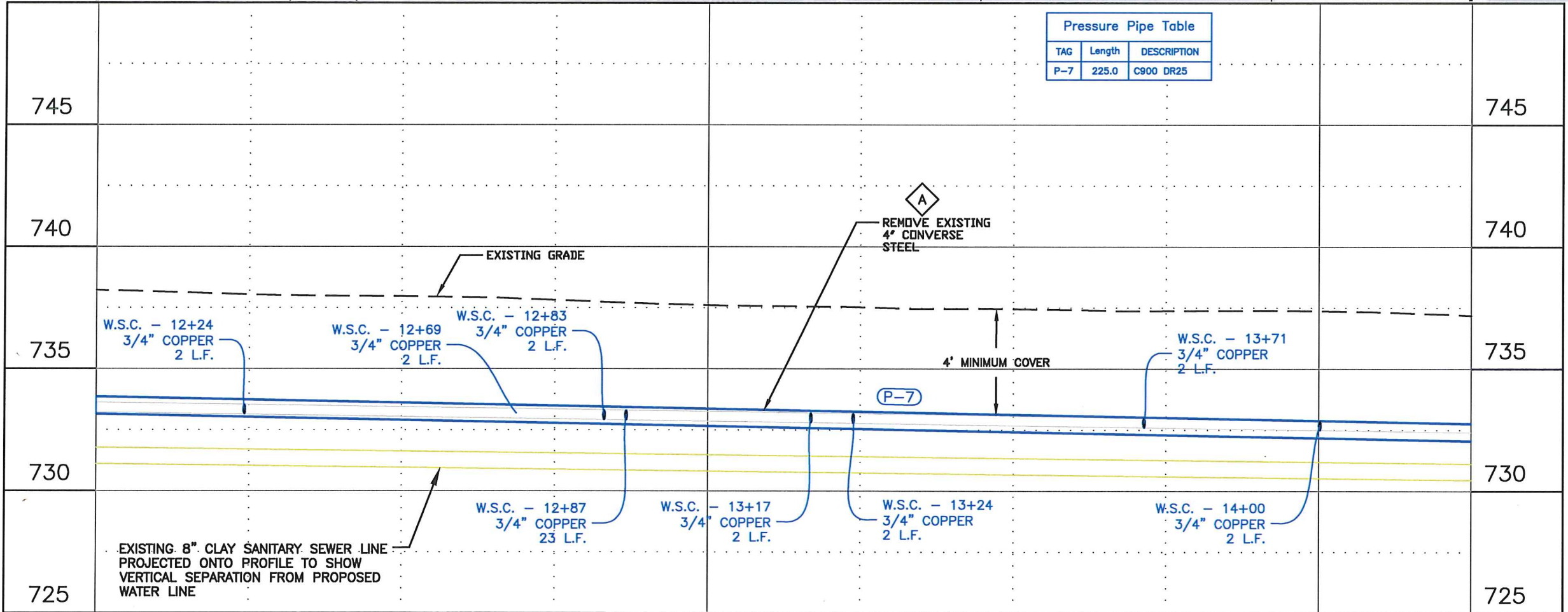


SPECIAL NOTES

A Remove existing pipe. Removal is incidental to the new components and no separate payment will be made.

| PAY ITEMS | QUANTITY |
|--|----------|
| 1 Removal of Obstruction, Ea., Item 201.4.1.C.1 | 0 EA. |
| 2 Removal of Bituminous Surface, Item 201.4.1.D.1B | 160 S.Y. |
| 3 Removal of Curb, Item 201.4.1.E.1 | 0 L.F. |
| 4 Mainline Type "P" Surface Restoration (Asphalt Roadway), Item 307.4.1.G.1 3" Minimum, SP2 1/2" Gradation | 160 S.Y. |
| 5 Connect to Existing Main - 6", Item 401.4.1.C.1A | 0 EA. |
| 6 Connect to Existing Main - 8", Item 401.4.1.C.1B | 0 EA. |
| 7 Water Main Pipe - 8" C900 DR25 Type, Item 401.4.1.A.1B | 225 L.F. |
| 8 Valve - Size 6", (See Appurtenance Table this sheet), Item 402.4.1.A.1A | 0 EA. |
| 9 Valve - Size 8", (See Appurtenance Table this sheet), Item 402.4.1.A.1B | 0 EA. |
| 10 Water Main Fitting - (See Fitting Table this sheet), Item 402.4.1.B.1 | 0 EA. |
| 11 Hydrant, (See Appurtenance Table this sheet) Item 403.4.1.A.1 | 0 EA. |
| 12 Connect to Existing Service Pipe, 3/4" or 1", Item 404.4.1.A.1 | 8 EA. |
| 13 Water Service Pipe 3/4" or 1", (See Profile this sheet for length), Item 404.4.1.B.1 | 37 L.F. |
| 14 Temporary Water Service Connection, Item SP-404A | 7 EA. |
| 15 Sewer Main Crossing, Item SP-507B | 0 EA. |

| TAG | Length | DESCRIPTION |
|-----|--------|-------------|
| P-7 | 225.0 | C900 DR25 |



| REVISIONS | | | |
|-----------|------|-------------|----|
| NO. | DATE | DESCRIPTION | BY |
| | | | |
| | | | |



215 "D" Street, Lewiston, ID 83501-1930
Phone: 209.744.1214 Fax: 209.744.5505

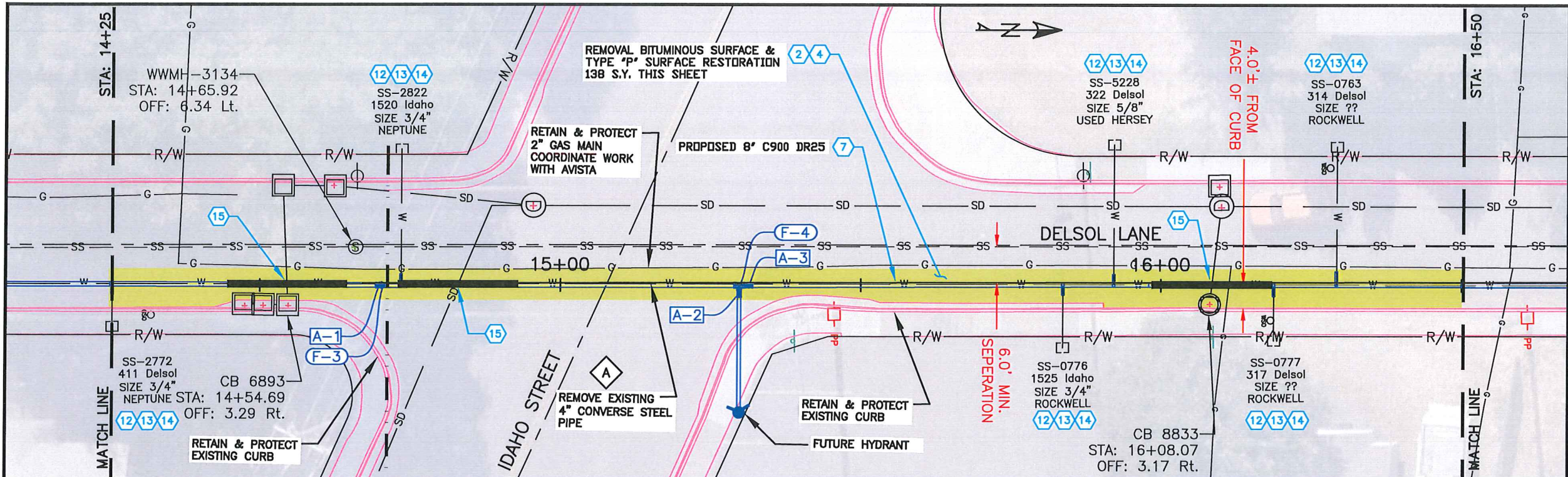
**DELSOL LANE WATER LINE REPLACEMENT
IDAHO STREET TO 6TH STREET**

PLAN & PROFILE

SCALE: 1" = 20'
 DESIGNED BY: S.J.S.
 DRAWN BY: B.D.S.
 CHECKED BY: ??.?
 SHEET SET: DELSOL-19
 DATE: 09-03-2019
 DRAWING NO.: C-5
 SHEET 5 OF 7

90% SUBMITTAL

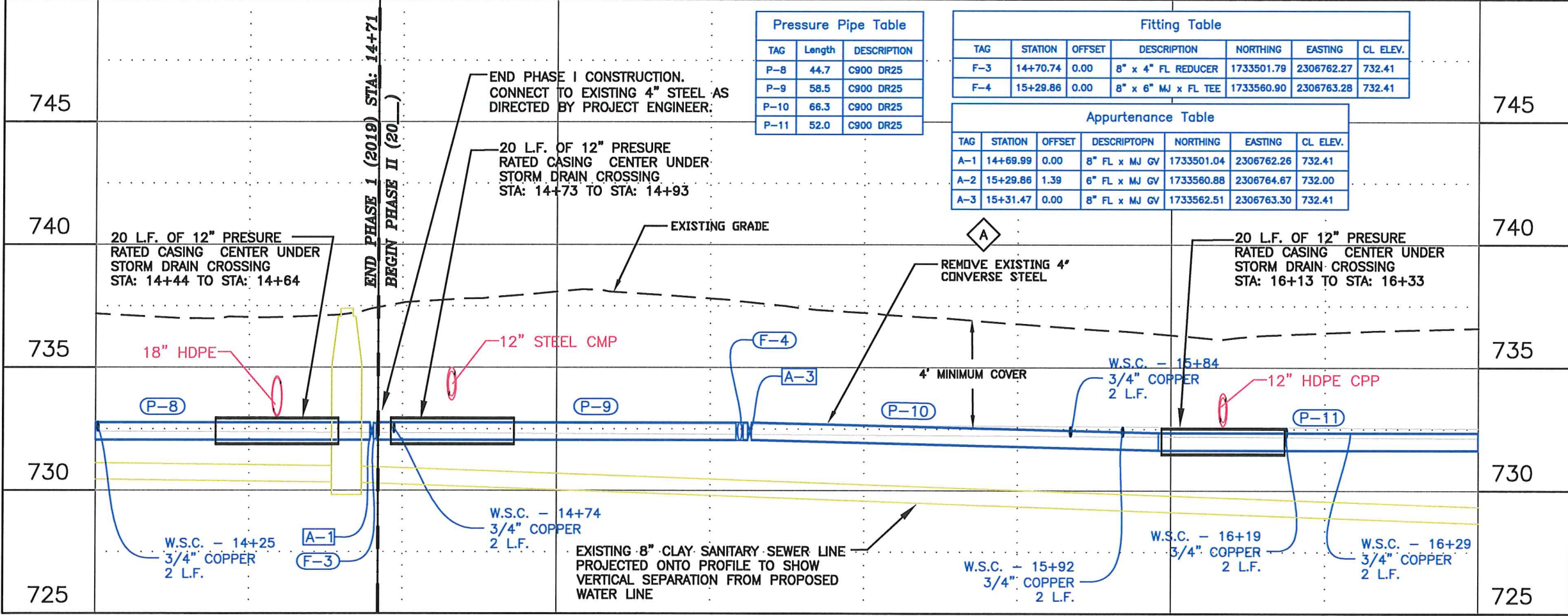
file Name G:\Shared drives\Public Works CAPITAL\Water_Distribution\WR501 Delsol Main 2019\dwg\Production Drawings\Delsol_Plan2.dwg Printed 9/3/2019 2:42 PM By Bruce Stewart



SPECIAL NOTES

A Remove existing pipe. Removal is incidental to the new components and no separate payment will be made.

| PAY ITEMS | QUANTITY |
|--|----------|
| 1 Removal of Obstruction, Ea., Item 201.4.1.C.1 | 0 EA. |
| 2 Removal of Bituminous Surface, Item 201.4.1.D.1B | 138 S.Y. |
| 3 Removal of Curb, Item 201.4.1.E.1 | 0 L.F. |
| 4 Mainline Type "P" Surface Restoration (Asphalt Roadway), Item 307.4.1.G.1 3" Minimum, SP2 1/2" Gradation | 138 S.Y. |
| 5 Connect to Existing Main - 6", Item 401.4.1.C.1A | 0 EA. |
| 6 Connect to Existing Main - 8", Item 401.4.1.C.1B | 0 EA. |
| 7 Water Main Pipe - 8" C900 DR25 Type, Item 401.4.1.A.1B | 221 L.F. |
| 8 Valve - Size 6", (See Appurtenance Table this sheet), Item 402.4.1.A.1A | 1 EA. |
| 9 Valve - Size 8", (See Appurtenance Table this sheet), Item 402.4.1.A.1B | 2 EA. |
| 10 Water Main Fitting - (See Fitting Table this sheet), Item 402.4.1.B.1 | 1 EA. |
| 11 Hydrant, (See Appurtenance Table this sheet) Item 403.4.1.A.1 | 0 EA. |
| 12 Connect to Existing Service Pipe, 3/4" or 1", Item 404.4.1.A.1 | 6 EA. |
| 13 Water Service Pipe 3/4" or 1", (See Profile this sheet for length), Item 404.4.1.B.1 | 12 L.F. |
| 14 Temporary Water Service Connection, Item SP-404A | 6 EA. |
| 15 Sewer Main Crossing, Item SP-507B | 3 EA. |



| TAG | Length | DESCRIPTION |
|------|--------|-------------|
| P-8 | 44.7 | C900 DR25 |
| P-9 | 58.5 | C900 DR25 |
| P-10 | 66.3 | C900 DR25 |
| P-11 | 52.0 | C900 DR25 |

| TAG | STATION | OFFSET | DESCRIPTION | NORTHING | EASTING | CL ELEV. |
|-----|----------|--------|---------------------|------------|------------|----------|
| F-3 | 14+70.74 | 0.00 | 8" x 4" FL REDUCER | 1733501.79 | 2306762.27 | 732.41 |
| F-4 | 15+29.86 | 0.00 | 8" x 6" MJ x FL TEE | 1733560.90 | 2306763.28 | 732.41 |

| TAG | STATION | OFFSET | DESCRIPTION | NORTHING | EASTING | CL ELEV. |
|-----|----------|--------|---------------|------------|------------|----------|
| A-1 | 14+69.99 | 0.00 | 8" FL x MJ GV | 1733501.04 | 2306762.26 | 732.41 |
| A-2 | 15+29.86 | 1.39 | 6" FL x MJ GV | 1733560.88 | 2306764.67 | 732.00 |
| A-3 | 15+31.47 | 0.00 | 8" FL x MJ GV | 1733562.51 | 2306763.30 | 732.41 |

| REVISIONS | | | |
|-----------|------|-------------|----|
| NO. | DATE | DESCRIPTION | BY |
| | | | |
| | | | |

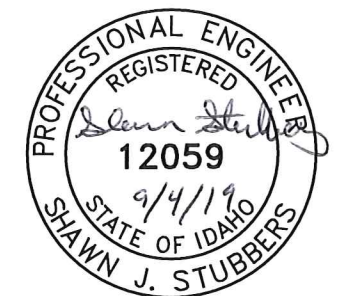


215 "D" Street, Lewiston, ID 83501-1930

**DELSOL LANE WATER LINE REPLACEMENT
IDAHO STREET TO 6TH STREET**

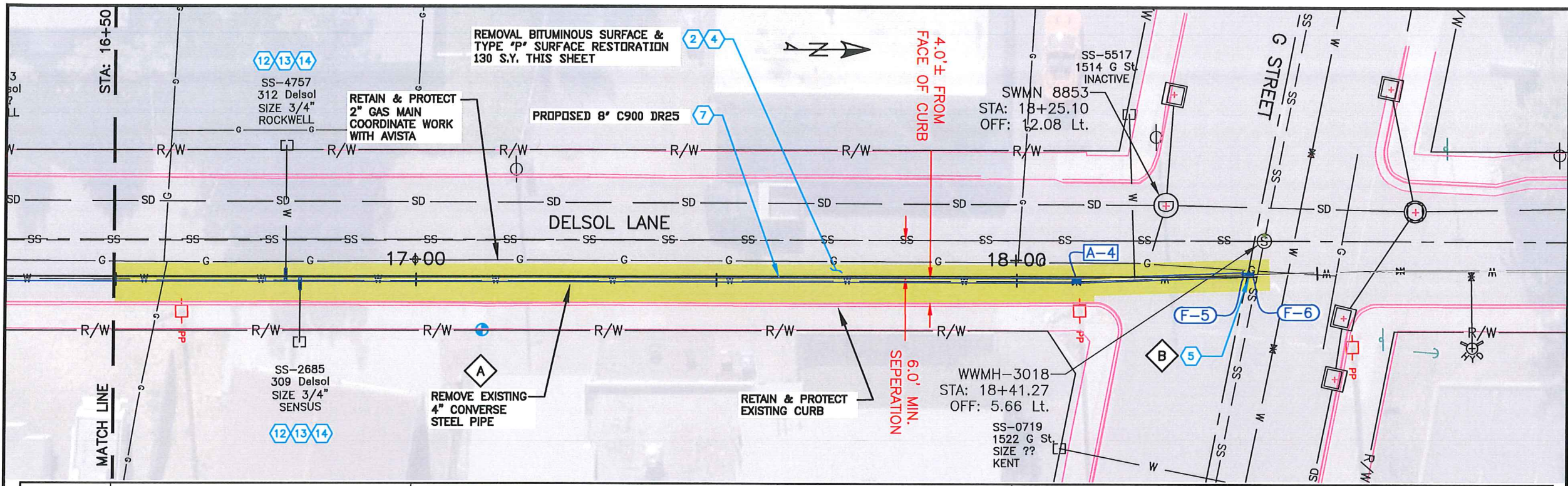
PLAN & PROFILE

SCALE: 1" = 20'
 DESIGNED BY: S.J.S.
 DRAWN BY: B.D.S.
 CHECKED BY: ???
 SHEET SET: DELSOL-19
 DATE: 09-03-2019
 DRAWING NO.: C-6



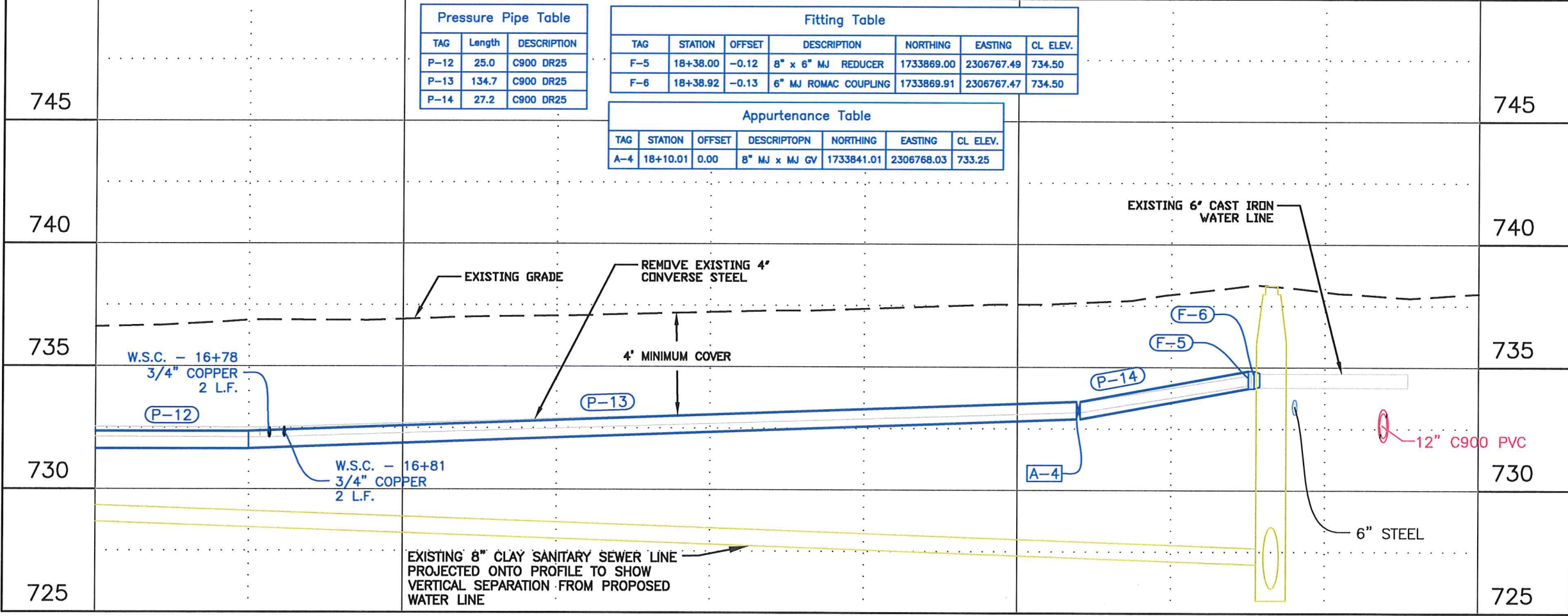
90% SUBMITTAL

file Name G:\Shared drives\Public Works CAPITAL\Water_Distribution\WR501_Delsol_Main 2019\dwg\Production Drawings\Delsol_Plan-2.dwg Printed 9/3/2019 2:42 PM By Bruce Stewart



- SPECIAL NOTES**
- A** Remove existing pipe. Removal is incidental to the new components and no separate payment will be made.
 - B** Connect to existing pipe as directed by the project engineer.

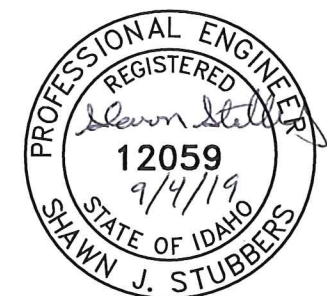
| PAY ITEMS | QUANTITY |
|--|----------|
| 1 Removal of Obstruction, Ea., Item 201.4.1.C.1 | 0 EA. |
| 2 Removal of Bituminous Surface, Item 201.4.1.D.1B | 130 S.Y. |
| 3 Removal of Curb, Item 201.4.1.E.1 | 0 L.F. |
| 4 Mainline Type "P" Surface Restoration (Asphalt Roadway), Item 307.4.1.G.1 3" Minimum, SP2 1/2" Gradation | 130 S.Y. |
| 5 Connect to Existing Main - 6", Item 401.4.1.C.1A | 1 EA. |
| 6 Connect to Existing Main - 8", Item 401.4.1.C.1B | 0 EA. |
| 7 Water Main Pipe - 8" C900 DR25 Type, Item 401.4.1.A.1B | 187 L.F. |
| 8 Valve - Size 6", (See Appurtenance Table this sheet), Item 402.4.1.A.1A | 0 EA. |
| 9 Valve - Size 8", (See Appurtenance Table this sheet), Item 402.4.1.A.1B | 1 EA. |
| 10 Water Main Fitting - (See Fitting Table this sheet), Item 402.4.1.B.1 | 2 EA. |
| 11 Hydrant, (See Appurtenance Table this sheet) Item 403.4.1.A.1 | 0 EA. |
| 12 Connect to Existing Service Pipe, 3/4" or 1", Item 404.4.1.A.1 | 2 EA. |
| 13 Water Service Pipe 3/4" or 1", (See Profile this sheet for length), Item 404.4.1.B.1 | 4 L.F. |
| 14 Temporary Water Service Connection, Item SP-404A | 2 EA. |
| 15 Sewer Main Crossing, Item SP-507B | 0 EA. |



| TAG | Length | DESCRIPTION |
|------|--------|-------------|
| P-12 | 25.0 | C900 DR25 |
| P-13 | 134.7 | C900 DR25 |
| P-14 | 27.2 | C900 DR25 |

| TAG | STATION | OFFSET | DESCRIPTION | NORTHING | EASTING | CL. ELEV. |
|-----|----------|--------|----------------------|------------|------------|-----------|
| F-5 | 18+38.00 | -0.12 | 8" x 6" MJ REDUCER | 1733869.00 | 2306767.49 | 734.50 |
| F-6 | 18+38.92 | -0.13 | 6" MJ ROMAC COUPLING | 1733869.91 | 2306767.47 | 734.50 |

| TAG | STATION | OFFSET | DESCRIPTION | NORTHING | EASTING | CL. ELEV. |
|-----|----------|--------|---------------|------------|------------|-----------|
| A-4 | 18+10.01 | 0.00 | 8" MJ x MJ GV | 1733841.01 | 2306768.03 | 733.25 |



| REVISIONS | | | |
|-----------|------|-------------|----|
| NO. | DATE | DESCRIPTION | BY |
| | | | |
| | | | |
| | | | |

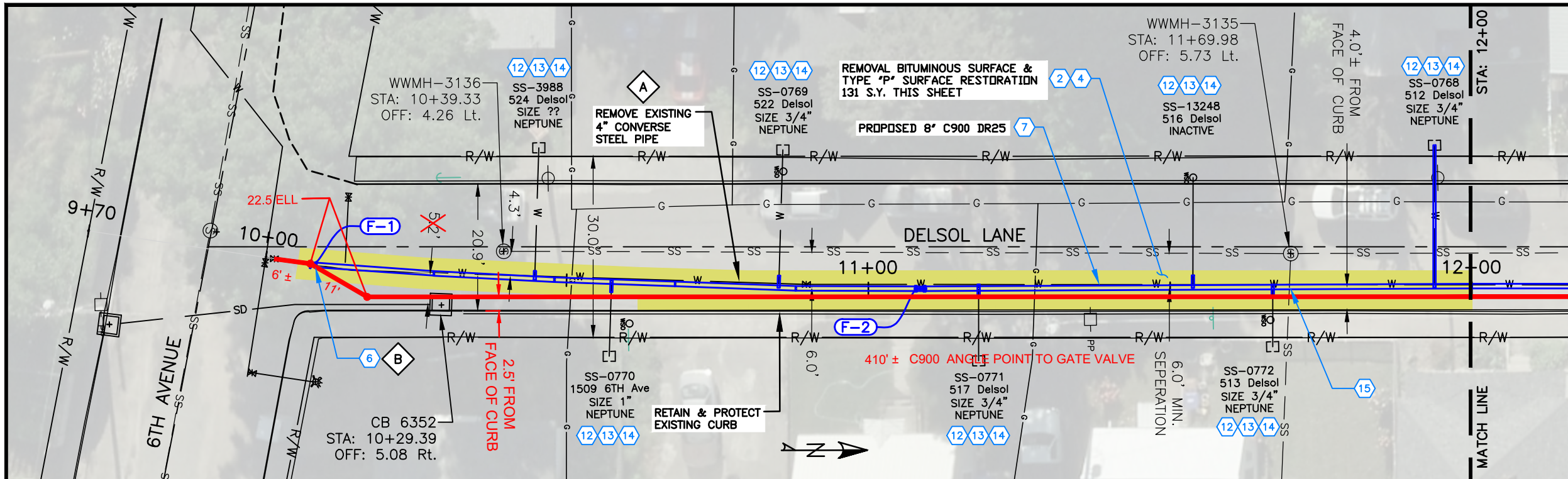


**DELSOL LANE WATER LINE REPLACEMENT
IDAHO STREET TO 6TH STREET**

PLAN & PROFILE

| |
|----------------------|
| SCALE: 1" = 20' |
| DESIGNED BY: S.J.S. |
| DRAWN BY: B.D.S. |
| CHECKED BY: ??? |
| SHEET SET: DELSOL-19 |
| DATE: 09-03-2019 |
| DRAWING NO.: C-7 |

File Name G:\Shared drives\Public Works CAPITAL\Water_Distribution\WR301_Delsol Main 2019\dwg\Production Drawings\Delsol_Plan-Asbuilt.dwg Printed 8/12/2020 11:20 AM By Bruce Stewart

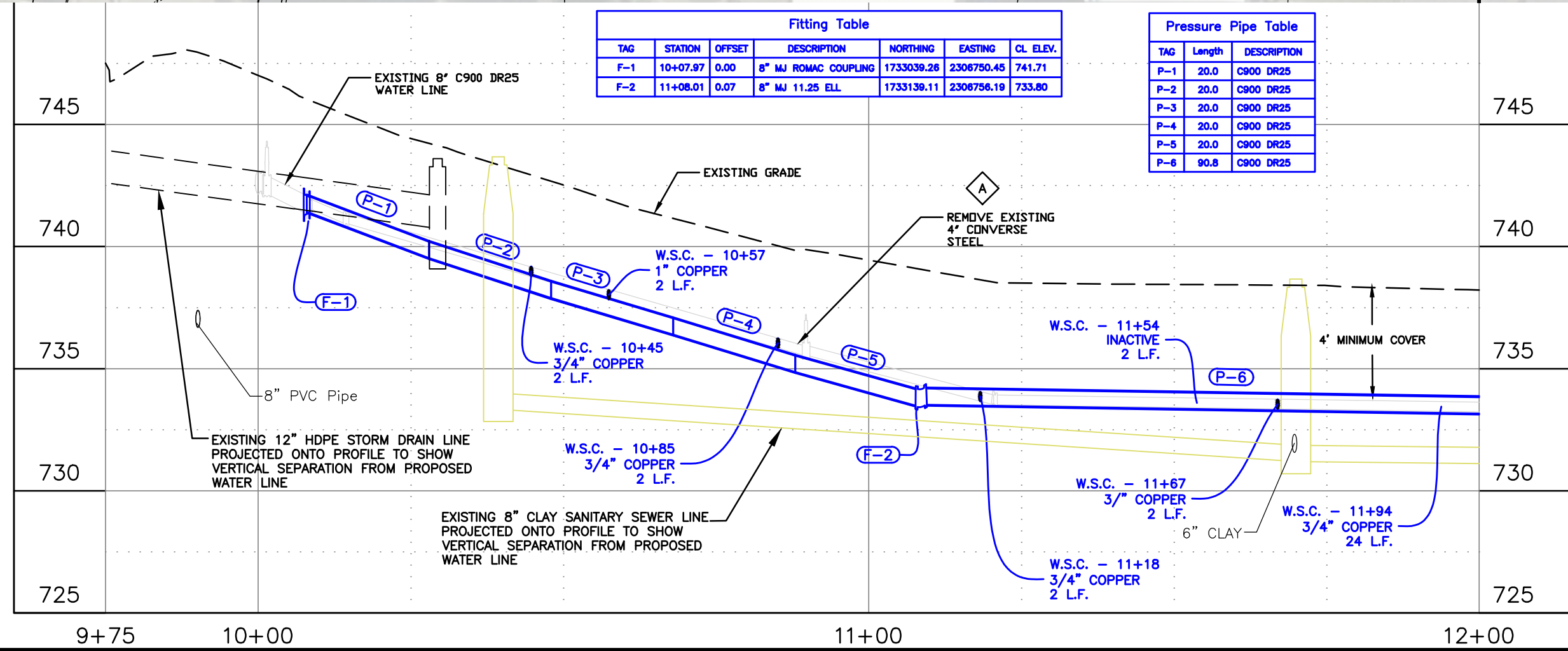


- SPECIAL NOTES**
- A Remove existing pipe. Removal is incidental to the new components and no separate payment will be made.
 - B Connect to existing pipe as directed by the project engineer.

| PAY ITEMS | QUANTITY |
|--|----------|
| 1 Removal of Obstruction, Ea., Item 201.4.1.C.1 | 0 EA. |
| 2 Removal of Bituminous Surface, Item 201.4.1.D.1B | 131 S.Y. |
| 3 Removal of Curb, Item 201.4.1.E.1 | 0 L.F. |
| 4 Mainline Type "P" Surface Restoration (Asphalt Roadway), Item 307.4.1.G.1 3" Minimum, SP2 1/2" Gradation | 131 S.Y. |
| 5 Connect to Existing Main - 6", Item 401.4.1.C.1A | 0 EA. |
| 6 Connect to Existing Main - 8", Item 401.4.1.C.1B | 1 EA. |
| 7 Water Main Pipe - 8" C900 DR25 Type, Item 401.4.1.A.1B | 191 L.F. |
| 8 Valve - Size 6", (See Appurtenance Table this sheet), Item 402.4.1.A.1A | 0 EA. |
| 9 Valve - Size 8", (See Appurtenance Table this sheet), Item 402.4.1.A.1B | 0 EA. |
| 10 Water Main Fitting - (See Fitting Table this sheet), Item 402.4.1.B.1 | 2 EA. |
| 11 Hydrant, (See Appurtenance Table this sheet) Item 403.4.1.A.1 | 0 EA. |
| 12 Connect to Existing Service Pipe, 3/4" or 1", Item 404.4.1.A.1 | 7 EA. |
| 13 Water Service Pipe 3/4" or 1", (See Profile this sheet for length), Item 404.4.1.B.1 | 14 L.F. |
| 14 Temporary Water Service Connection, Item SP-404A | 7 EA. |
| 15 Sewer Main Crossing, Item SP-507B | 1 EA. |

| TAG | STATION | OFFSET | DESCRIPTION | NORTHING | EASTING | CL. ELEV. |
|-----|----------|--------|----------------------|------------|------------|-----------|
| F-1 | 10+07.97 | 0.00 | 8" MJ ROMAC COUPLING | 1733039.28 | 2306750.45 | 741.71 |
| F-2 | 11+08.01 | 0.07 | 8" MJ 11.25 ELL | 1733139.11 | 2306756.19 | 733.80 |

| TAG | Length | DESCRIPTION |
|-----|--------|-------------|
| P-1 | 20.0 | C900 DR25 |
| P-2 | 20.0 | C900 DR25 |
| P-3 | 20.0 | C900 DR25 |
| P-4 | 20.0 | C900 DR25 |
| P-5 | 20.0 | C900 DR25 |
| P-6 | 90.8 | C900 DR25 |



AS CONSTRUCTED

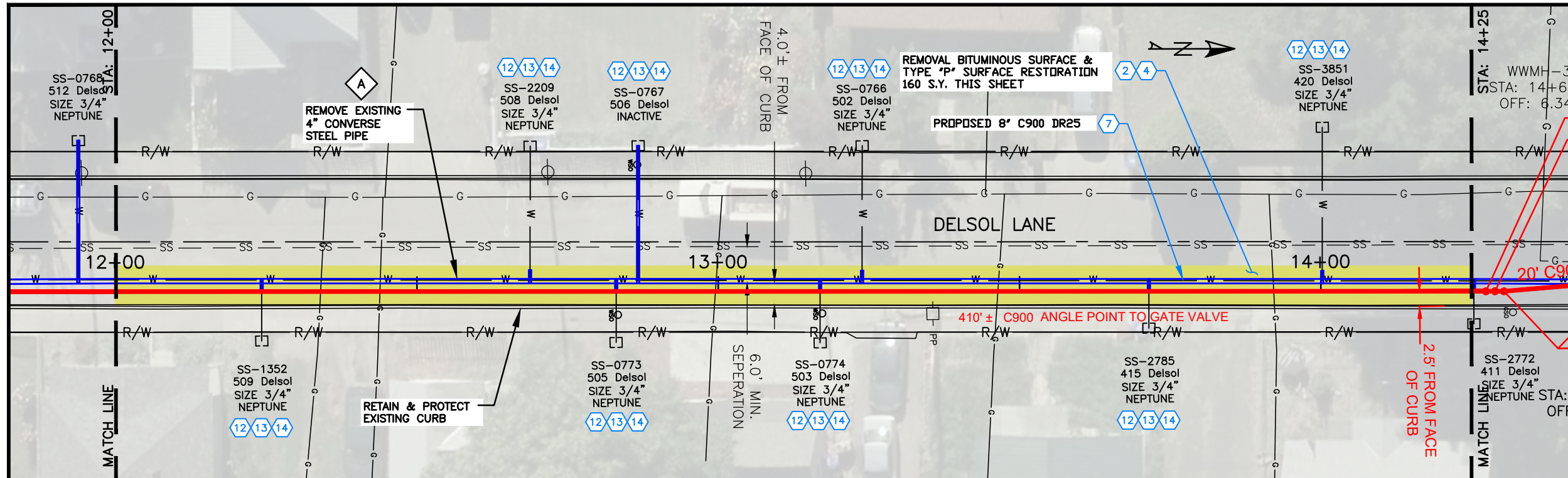
| REVISIONS | | | |
|-----------|-----------|--|-----|
| NO. | DATE | DESCRIPTION | BY |
| 1 | 8/11/2020 | ASBUILT INFORMATION FROM GARIN RED LINES | BDS |


 CITY OF LEWISTON
 PUBLIC WORKS
 DEPARTMENT
 1861
 215 "D" Street, Lewiston, ID 83501-1930
 Phone: 208-746-1316 Fax: 208-746-5595

**DELSOL LANE WATER LINE REPLACEMENT
IDAHO STREET TO 6TH STREET**

PLAN & PROFILE

| |
|-------------------------|
| SCALE: 1" = 20' |
| DESIGNED BY: S.J.S. |
| DRAWN BY: B.D.S. |
| CHECKED BY: ??? |
| SHEET SET: DELSOL-19 |
| DATE: 09-03-2019 |
| DRAWING NO.: C-4 |
| SHEET 4 OF 7 |

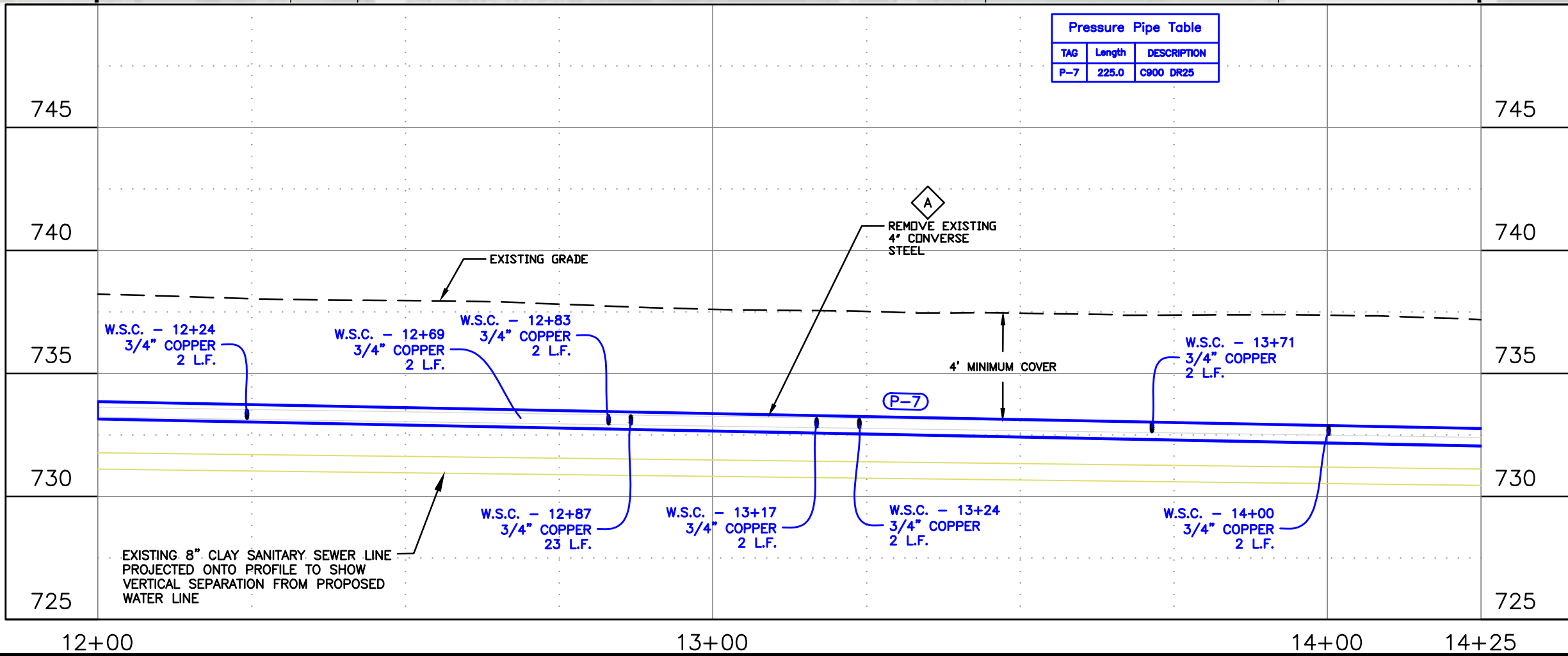


SPECIAL NOTES

A Remove existing pipe. Removal is incidental to the new components and no separate payment will be made.

| PAY ITEMS | QUANTITY |
|--|----------|
| 1 Removal of Obstruction, Ea., Item 201.4.1.C.1 | 0 EA. |
| 2 Removal of Bituminous Surface, Item 201.4.1.D.1B | 160 S.Y. |
| 3 Removal of Curb, Item 201.4.1.E.1 | 0 L.F. |
| 4 Mainline Type "P" Surface Restoration (Asphalt Roadway), Item 307.4.1.G.1 3" Minimum, SP2 1/2" Gradation | 160 S.Y. |
| 5 Connect to Existing Main - 6", Item 401.4.1.C.1A | 0 EA. |
| 6 Connect to Existing Main - 8", Item 401.4.1.C.1B | 0 EA. |
| 7 Water Main Pipe - 8" C900 DR25 Type, Item 401.4.1.A.1B | 225 L.F. |
| 8 Valve - Size 6", (See Appurtenance Table this sheet), Item 402.4.1.A.1A | 0 EA. |
| 9 Valve - Size 8", (See Appurtenance Table this sheet), Item 402.4.1.A.1B | 0 EA. |
| 10 Water Main Fitting - (See Fitting Table this sheet), Item 402.4.1.B.1 | 0 EA. |
| 11 Hydrant, (See Appurtenance Table this sheet) Item 403.4.1.A.1 | 0 EA. |
| 12 Connect to Existing Service Pipe, 3/4" or 1", Item 404.4.1.A.1 | 8 EA. |
| 13 Water Service Pipe 3/4" or 1", (See Profile this sheet for length), Item 404.4.1.B.1 | 37 L.F. |
| 14 Temporary Water Service Connection, Item SP-404A | 7 EA. |
| 15 Sewer Main Crossing, Item SP-507B | 0 EA. |

| TAG | Length | DESCRIPTION |
|-----|--------|-------------|
| P-7 | 225.0 | C900 DR25 |



AS CONSTRUCTED

| REVISIONS | | | |
|-----------|-----------|--|-----|
| NO. | DATE | DESCRIPTION | BY |
| 1 | 8/11/2020 | ASBUILT INFORMATION FROM GARIN RED LINES | BDS |

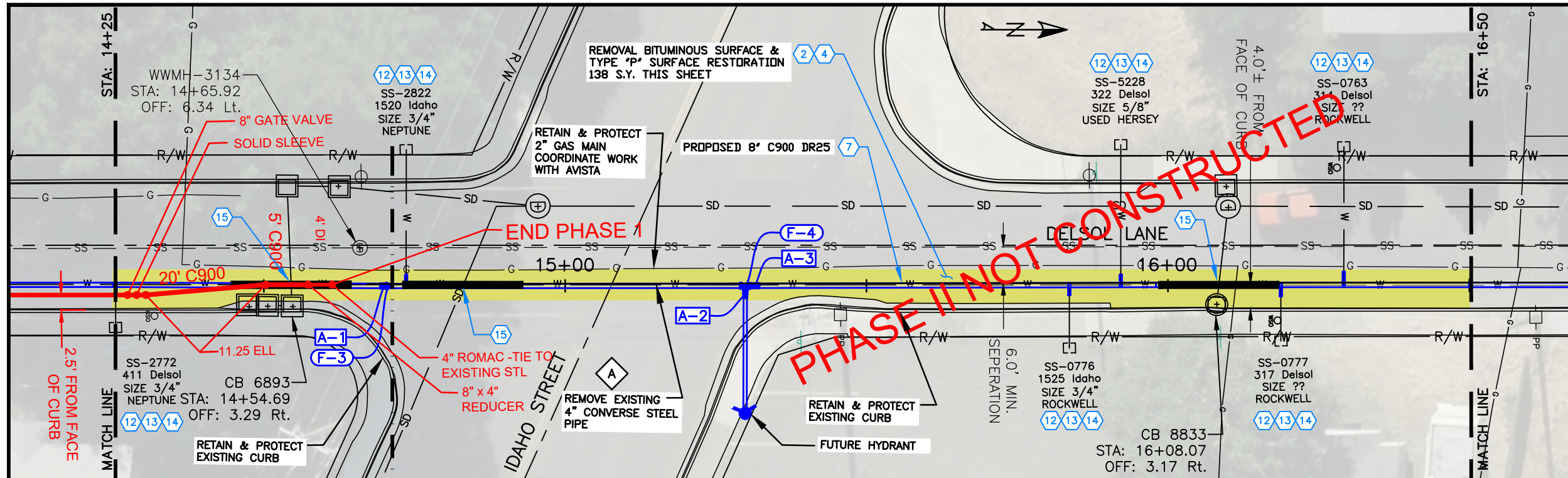
215 "D" Street, Lewiston, ID 83501-1930
Phone: 208-746-1316 Fax: 208-746-5595

DELSOL LANE WATER LINE REPLACEMENT
IDAHO STREET TO 6TH STREET

PLAN & PROFILE

SCALE: 1" = 20'
DESIGNED BY: S.J.S.
DRAWN BY: B.D.S.
CHECKED BY: ???
SHEET SET: DELSOL-19
DATE: 09-03-2019
DRAWING NO.: **C-5**
SHEET 5 OF 7

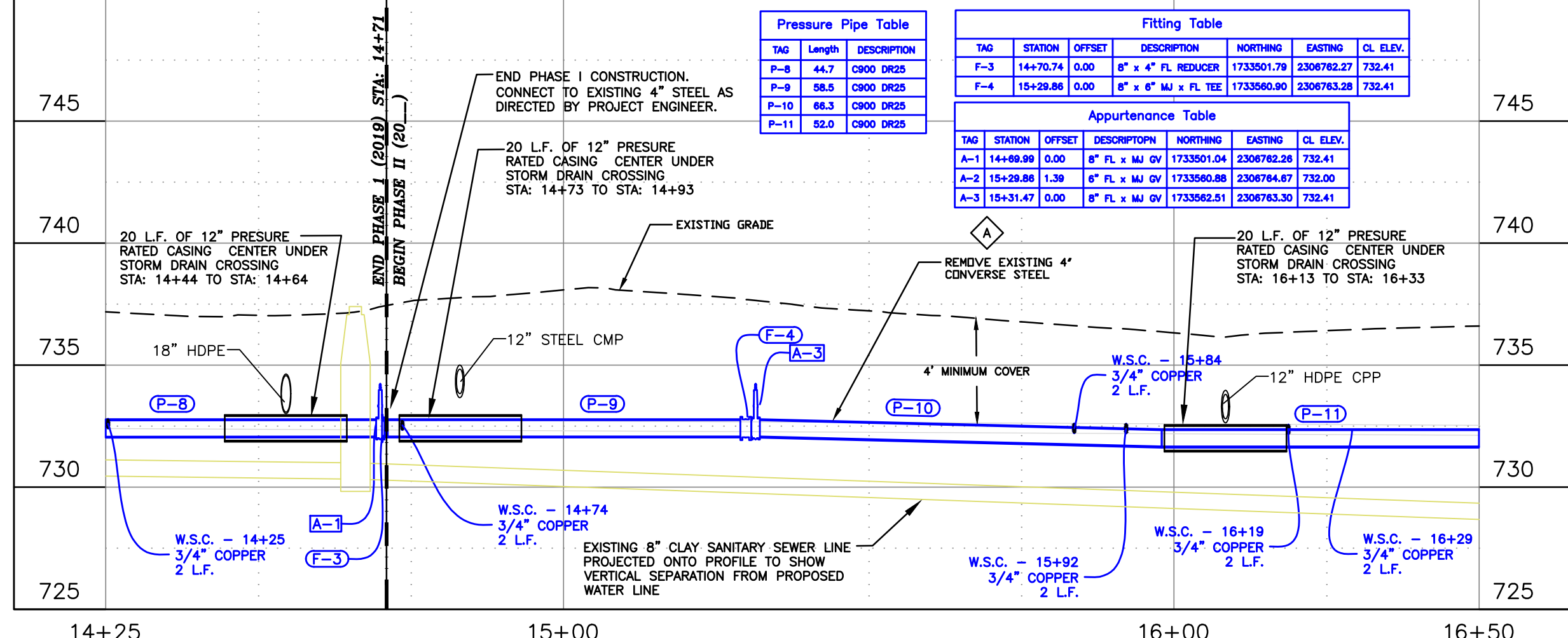
File Name: G:\Shared drives\Public Works CAPITAL\Water_Distribution\WR301_Delsol Main 2019\dwg\Production Drawings\Delsol_Plan-Asbuilt.dwg Printed 8/12/2020 11:48 AM By Bruce Stewart



SPECIAL NOTES

A Remove existing pipe. Removal is incidental to the new components and no separate payment will be made.

| PAY ITEMS | QUANTITY |
|--|----------|
| 1 Removal of Obstruction, Ea., Item 201.4.1.C.1 | 0 EA. |
| 2 Removal of Bituminous Surface, Item 201.4.1.D.1B | 138 S.Y. |
| 3 Removal of Curb, Item 201.4.1.E.1 | 0 L.F. |
| 4 Mainline Type "P" Surface Restoration (Asphalt Roadway), Item 307.4.1.G.1 3" Minimum, SP2 1/2" Gradation | 138 S.Y. |
| 5 Connect to Existing Main - 6", Item 401.4.1.C.1A | 0 EA. |
| 6 Connect to Existing Main - 8", Item 401.4.1.C.1B | 0 EA. |
| 7 Water Main Pipe - 8" C900 DR25 Type, Item 401.4.1.A.1B | 221 L.F. |
| 8 Valve - Size 6", (See Appurtenace Table this sheet), Item 402.4.1.A.1A | 1 EA. |
| 9 Valve - Size 8", (See Appurtenace Table this sheet), Item 402.4.1.A.1B | 2 EA. |
| 10 Water Main Fitting - (See Fitting Table this sheet), Item 402.4.1.B.1 | 1 EA. |
| 11 Hydrant, (See Appurtenace Table this sheet) Item 403.4.1.A.1 | 0 EA. |
| 12 Connect to Existing Service Pipe, 3/4" or 1", Item 404.4.1.A.1 | 6 EA. |
| 13 Water Service Pipe 3/4" or 1", (See Profile this sheet for length), Item 404.4.1.B.1 | 12 L.F. |
| 14 Temporary Water Service Connection, Item SP-404A | 6 EA. |
| 15 Sewer Main Crossing, Item SP-507B | 3 EA. |



Pressure Pipe Table

| TAG | Length | DESCRIPTION |
|------|--------|-------------|
| P-8 | 44.7 | C900 DR25 |
| P-9 | 58.5 | C900 DR25 |
| P-10 | 66.3 | C900 DR25 |
| P-11 | 52.0 | C900 DR25 |

Fitting Table

| TAG | STATION | OFFSET | DESCRIPTION | NORTHING | EASTING | CL. ELEV. |
|-----|----------|--------|---------------------|------------|------------|-----------|
| F-3 | 14+70.74 | 0.00 | 8" x 4" FL REDUCER | 1733501.79 | 2306782.27 | 732.41 |
| F-4 | 15+29.86 | 0.00 | 8" x 6" MJ x FL TEE | 1733560.90 | 2306763.28 | 732.41 |

Appurtenance Table

| TAG | STATION | OFFSET | DESCRIPTION | NORTHING | EASTING | CL. ELEV. |
|-----|----------|--------|---------------|------------|------------|-----------|
| A-1 | 14+89.99 | 0.00 | 8" FL x MJ GV | 1733501.04 | 2306782.28 | 732.41 |
| A-2 | 15+29.86 | 1.39 | 6" FL x MJ GV | 1733560.88 | 2306784.67 | 732.00 |
| A-3 | 15+31.47 | 0.00 | 8" FL x MJ GV | 1733562.51 | 2306763.30 | 732.41 |

REVISIONS

| NO. | DATE | DESCRIPTION | BY |
|-----|-----------|--|-----|
| 1 | 8/11/2020 | ASBUILT INFORMATION FROM GARIN RED LINES | BDS |



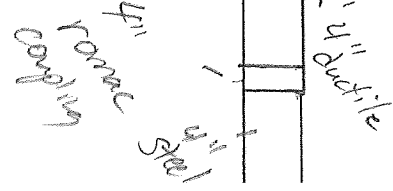
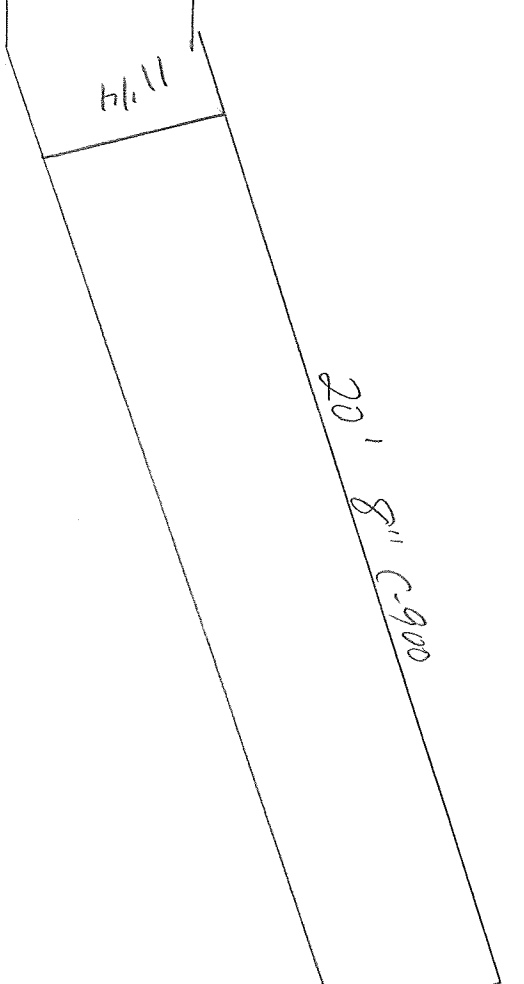
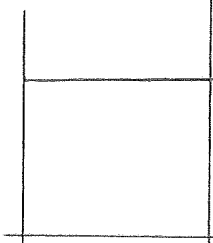
**DELSOL LANE WATER LINE REPLACEMENT
IDAHO STREET TO 6TH STREET**

PLAN & PROFILE

SCALE: 1" = 20'

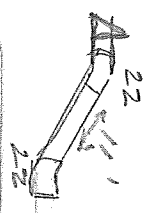
DESIGNED BY: S.J.S.
DRAWN BY: B.D.S.
CHECKED BY: ???
SHEET SET: DELSOL-19
DATE: 09-03-2019
DRAWING NO.: C-6
SHEET 6 OF 7

Solid Steer



6th Ave

2' 6" from curb line to center of pip

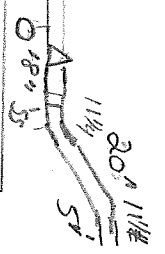


8" C900

Del Sol

~~471'~~

430' valve to valve



14th Ave