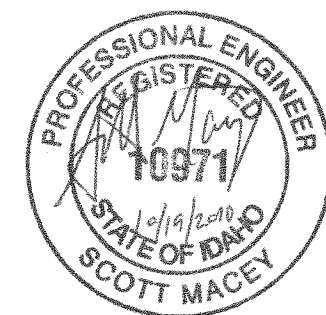
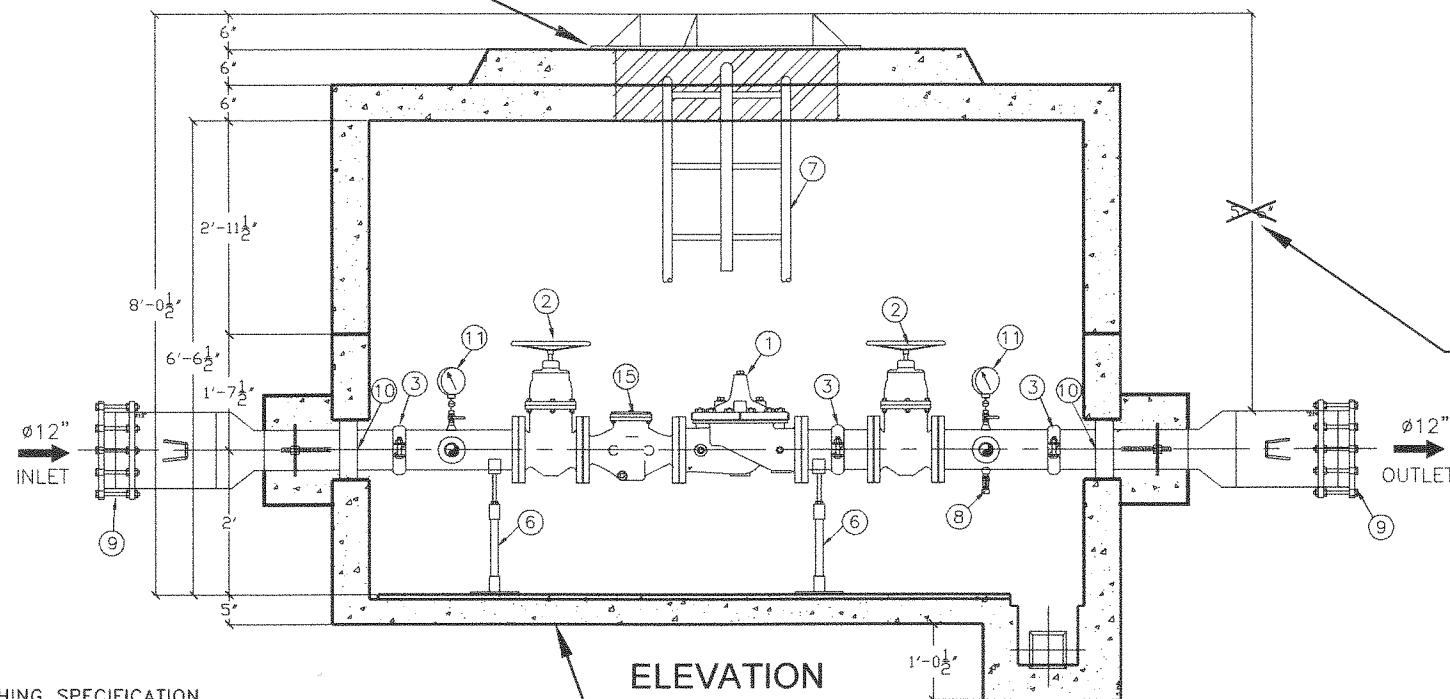
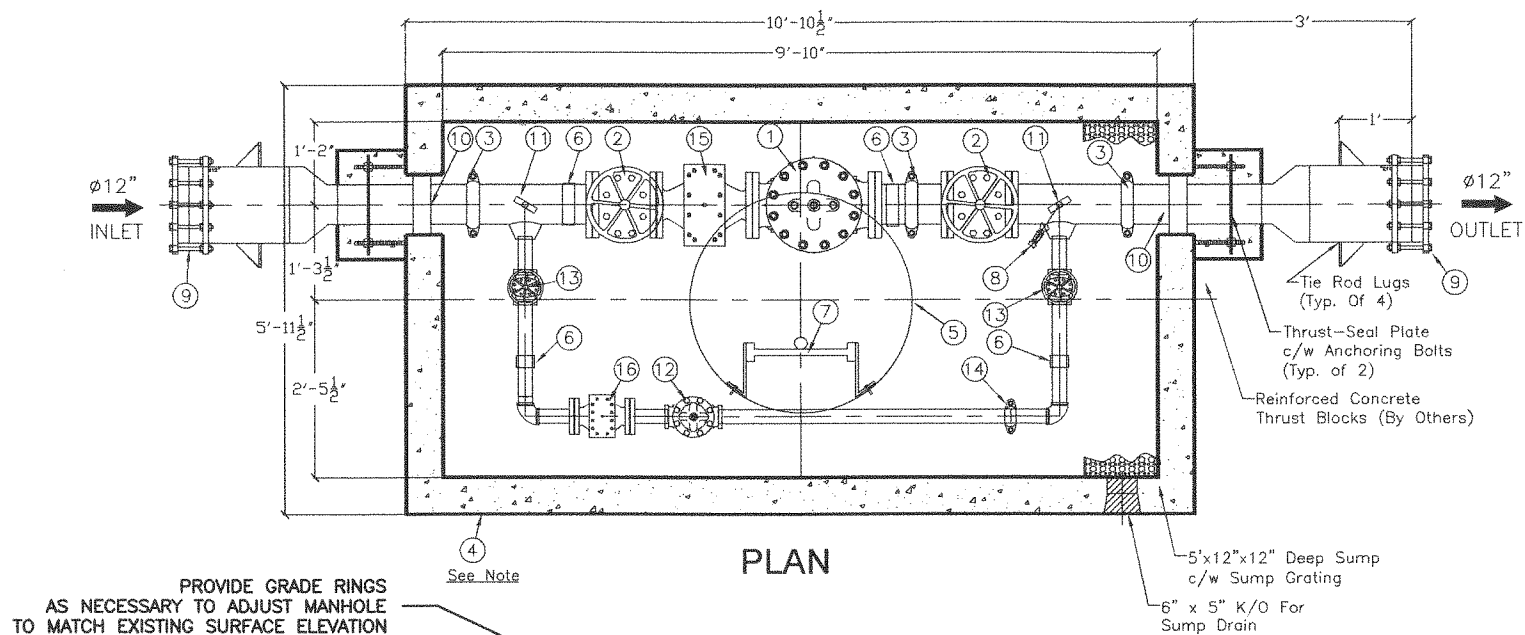


CONSTRUCTION NOTES

1. DUCTILE IRON PIPE SHALL BE PUSH-ON GASKETED PIPE CONFORMING TO AWWA C151, CENTRIFUGALLY CAST OF 60-42-10 IRON. PRESSURE CLASS SHALL BE 350 UNLESS OTHERWISE SPECIFIED. THE PIPE SHALL BE CEMENT MORTAR LINED IN ACCORDANCE WITH AWWA C104. ALL JOINTS SHALL BE GASKETED IN COMPLIANCE WITH AWWA C111. GASKETS SHALL BE INSTALLED BY THE PIPE MANUFACTURER.
2. MECHANICAL JOINT FITTINGS SHALL CONFORM TO AWWA C153 AND C111. FITTINGS SHALL BE CEMENT-LINED AND SEAL-COATED IN ACCORDANCE WITH AWWA C104.
3. UNLESS OTHERWISE INDICATED BY THE PLANS OR DIRECTED BY THE ENGINEER, ALL MECHANICAL JOINTS 12" AND SMALLER SHALL BE EQUIPPED WITH GRIPRING (ROMAC INDUSTRIES), MJ FIELD LOK (US PIPE), OR ALLGRIP/PVCGRIP (STAR PIPE) RING-TYPE GRIPPING RESTRAINTS. MECHANICAL JOINT RESTRAINTS SHALL BE OF A TYPE COMPATIBLE WITH THE PIPE MATERIAL.
4. THE CITY OF LEWISTON WATER DEPARTMENT SHALL PRESSURE TEST THE NEW WATER MAIN IN ACCORDANCE WITH THE SPECIFICATIONS AND AWWA C600. WHEN A SUCCESSFUL PRESSURE TESTING IS COMPLETED, THE WATER DEPARTMENT WILL PERFORM DISINFECTION AND ALL BACTERIOLOGICAL TESTING.





STANDARD FABRICATION & FINISHING SPECIFICATION

FABRICATED STEEL PIPE & FITTINGS TO BE SCHEDULE NO. 40 STEEL PIPE FOR SIZES TO 10", AND 3/8" WALL FOR 12" AND LARGER. ALL 2" AND SMALLER PIPE TO BE THREADED BRASS. ALL 3" AND LARGER PIPE, INSIDE WETTED SURFACES TO BE SANDBLASTED, EPOXY LINED AND COATED TO AWWA C-210 AND NSF-61 SPECIFICATION. FINISH COATING WILL BE BLUE ENAMEL.

NOTE:

VAULT #10565 (H-20 LOADING)
INSIDE DIMENSIONS:
10' L x 5' W x 6'6" H

CONSTRUCT VAULT FOUNDATION OF
COMPACTED CRUSHED AGGREGATE
MINIMUM DEPTH 6"

BILL OF MATERIALS		
ITEM	QTY.	DESCRIPTION
1	1	6" CLA-VAL 92G-01 BCSYKC Pressure Reducing Sustaining Valve c/w X101 Position Indicator DIBT, #150 Flgd, CRD 30-300, CRL 20-200psi
2	2	6" Clow WW 25125 NRS RW Gate Valve c/w Handwheel - #150 Flgd
3	3	6" VICTAULIC #07 Coupling
4	1	10565 Precast Concrete Chamber c/w White Interior & Black Exterior Sealant
5	1	C23 Cast Iron Dobney Manhole w/ Frame and Cover, Water tight, Marked PRV
6	4	Adjustable Pipe Supports
7	1	Aluminum Ladder with Safety Post (Shipped loose installed by others)
8	1	3/4" Hose Bib c/w Isolation Ball Valve
9	2	12" EBAA 3800 Transition Coupling STxDI
10	2	6" Pipe Seal Assembly PS-475
11	2	4" WIKA Pressure Gauge (0-100 IN, 0-60 OUT) c/w isolation ball valve
12	1	2" 92G-01 BCSYKC Pressure Reducing Sustaining Valve c/w X101 Position Indicator, DIBT, #300 Threaded, CRD 30-300, CRL 20-200
13	2	2" Clow WW2500 NRS RW Gate Valve c/w Handwheel - Threaded
14	1	2" VICTAULIC #07 Coupling
15	1	6" Cla-Val X43H Strainer, #150 Flanged
16	1	2" Cla-Val X43H Strainer, #150 Flanged w/ threaded companion flanges

PROVIDE APPROXIMATE 6' BURY DEPTH FROM FINISHED SURFACE
PROVIDE VERTICAL FITTINGS AND PIPELINE AS DIRECTED TO CONNECT TO EXISTING PIPELINE SEE SHEET 2 DETAIL A

GCSystems
INCORPORATED

TITLE: 6" x 2" PRV STATION
w/ 12" In & Out

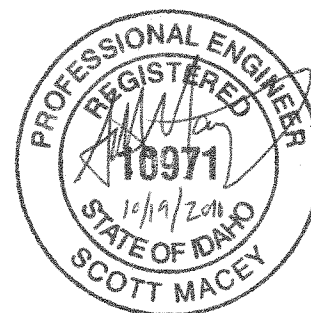
PROJECT: NICH
Lewiston, Idaho

QUOTE: 4091200208

DATE: DEC 03/09 CK'D: TK APP'D: RM SHEET: 1 OF 1

DRAWN: GY DRAWING No: 4091200208-51
SCALE: NTS

REV: -



CITY OF LEWISTON
PUBLIC WORKS DEPARTMENT
ENGINEERING SERVICES
184 1ST STREET LEWISTON, ID 83501
(208) 748-3671 FAX (208) 748-0867

WATER DEPARTMENT
VAULT DETAILS
21st Avenue PRPS Valve Station



DESIGNED BY:	SCALE:	None
DRAWN BY:	S.M.	
CHECKED BY:	S.M.	
DATE:	DATE:	Oct 2010
FILE NAME:	FILE NAME:	21stavePRV
NO.	NO.	3
DESCRIPTION	DESCRIPTION	3
BY	BY	3