

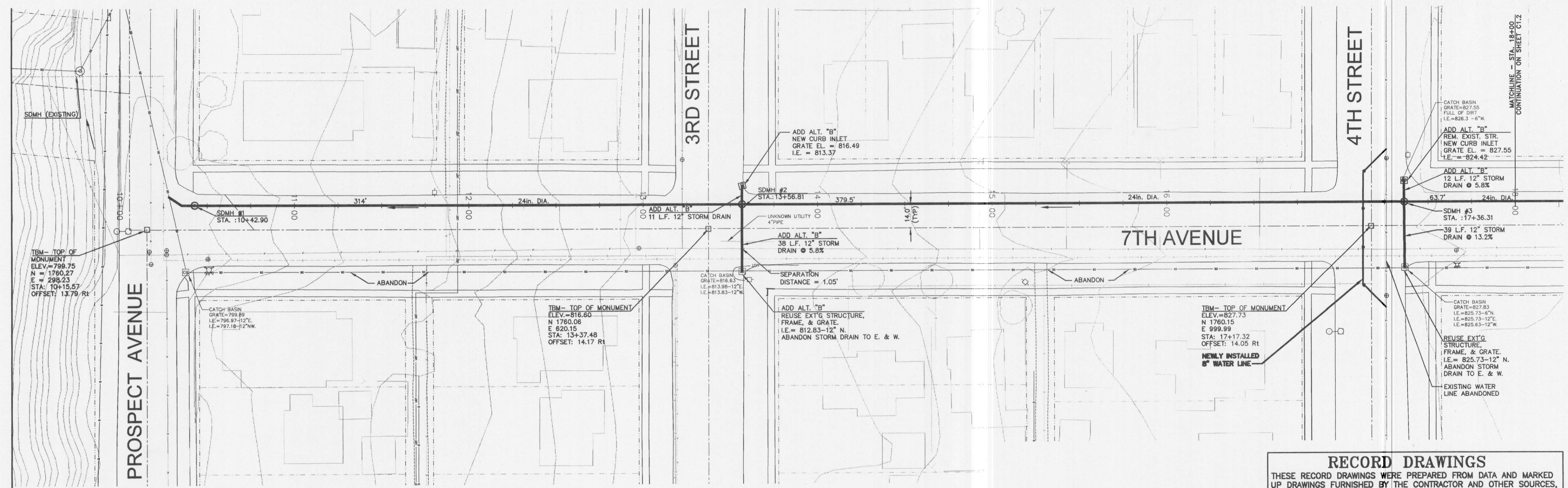
By	
Revision	
Date	

USKH
 Engineering • Land Surveying
 Planning • Materials Testing
 313 D Street, Ste 200
 Lewiston, ID 83501
 Phone: (208) 746-2661
 Fax: (208) 746-6825

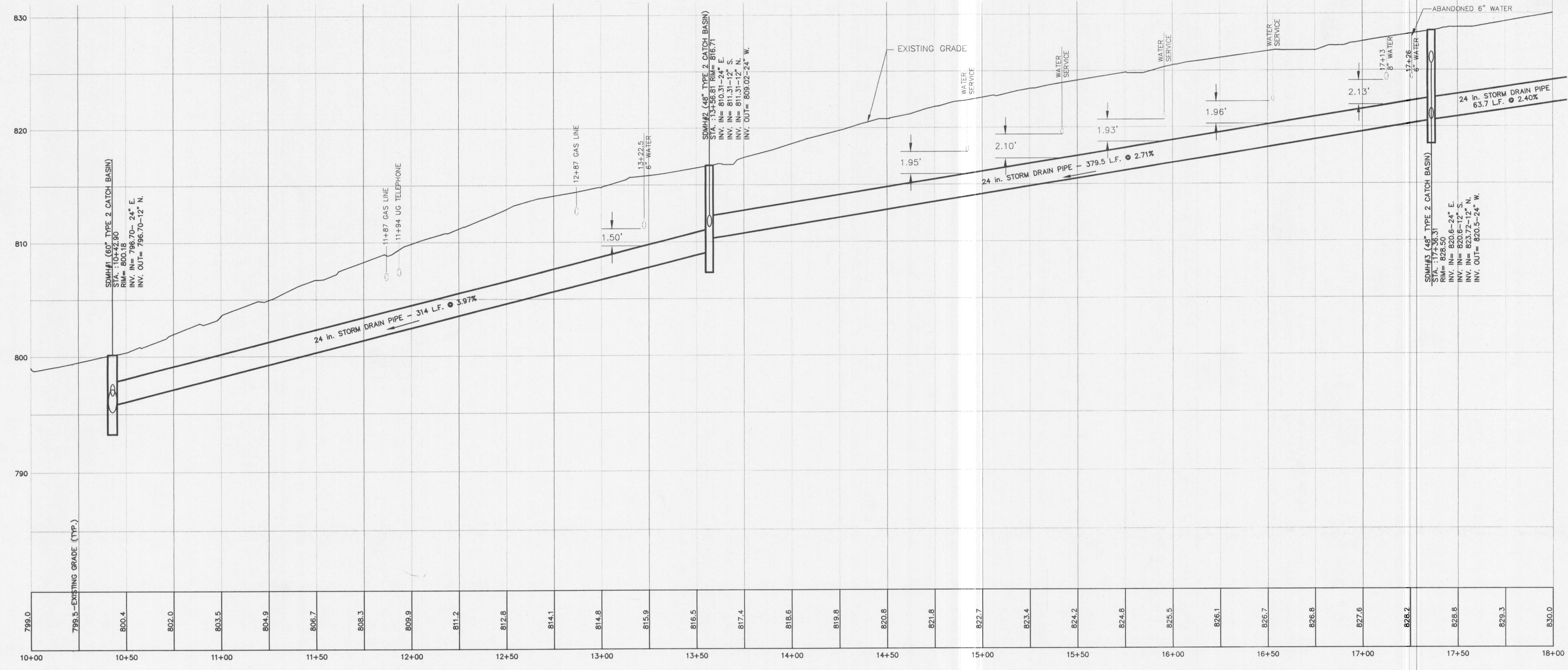
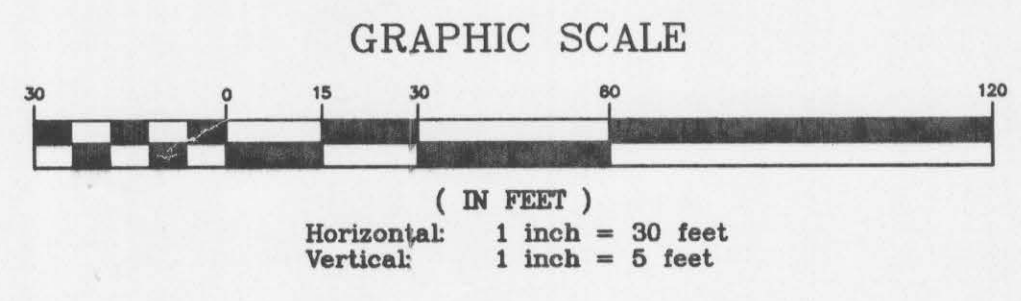
**LEWIS - CLARK STATE COLLEGE
 STORM WATER SYSTEM IMPROVEMENTS 2005
 DPW No. 04-150
 PLAN AND PROFILE
 7TH AVENUE
 10+00 - 18+00**

Project Mgr.	RLL
Drawn	RLL
Drawn	BDS
Checked	AG
Date	04-17-06
Sheet No.:	

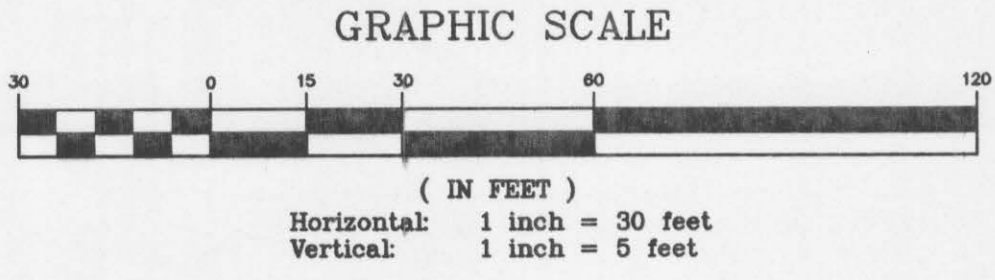
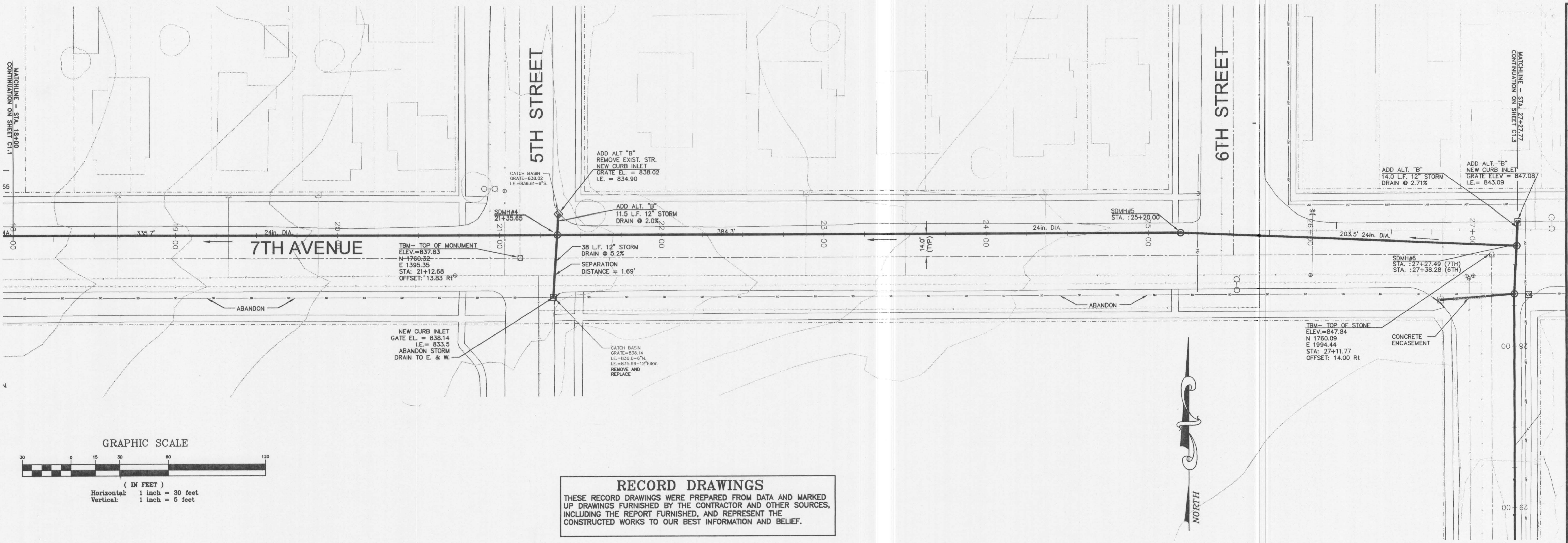
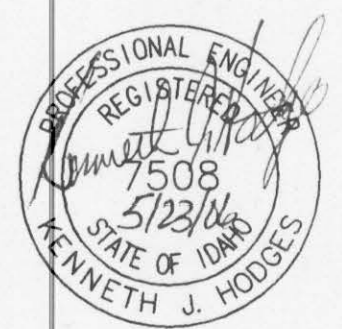
C 1.1
 USKH W.O. 737602



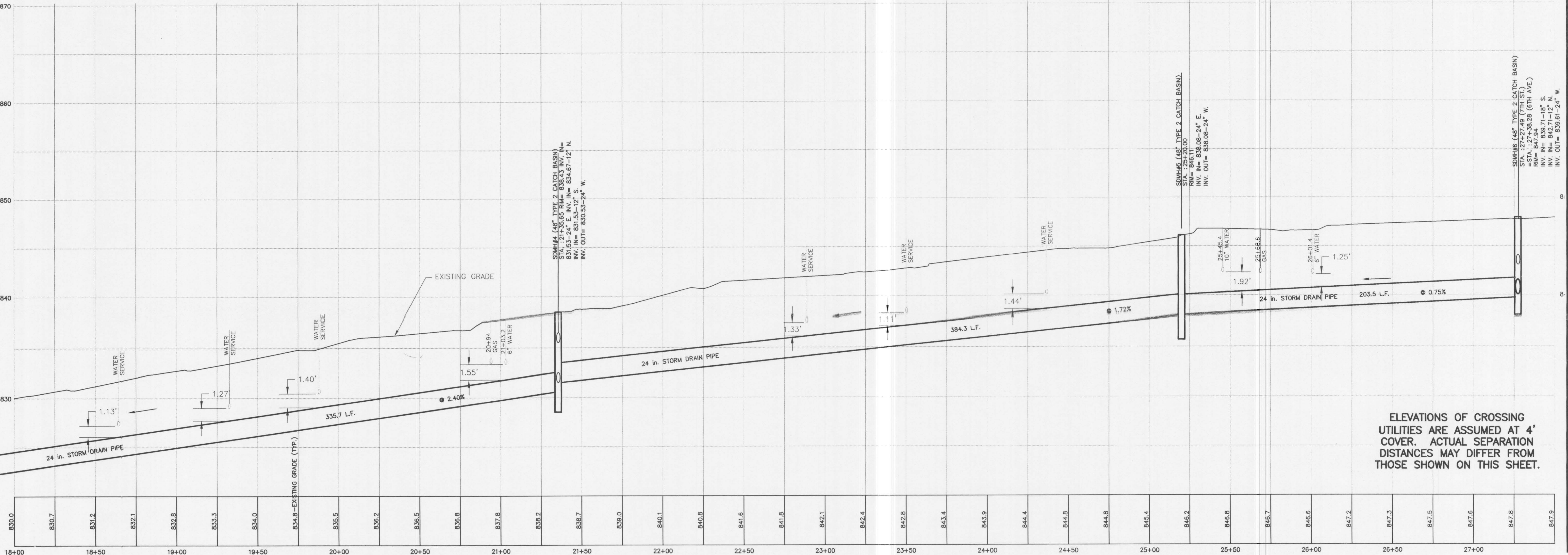
RECORD DRAWINGS
 THESE RECORD DRAWINGS WERE PREPARED FROM DATA AND MARKED UP DRAWINGS FURNISHED BY THE CONTRACTOR AND OTHER SOURCES, INCLUDING THE REPORT FURNISHED, AND REPRESENT THE CONSTRUCTED WORKS TO OUR BEST INFORMATION AND BELIEF.



ELEVATIONS OF CROSSING UTILITIES ARE ASSUMED AT 4' COVER. ACTUAL SEPARATION DISTANCES MAY DIFFER FROM THOSE SHOWN ON THIS SHEET.



RECORD DRAWINGS
 THESE RECORD DRAWINGS WERE PREPARED FROM DATA AND MARKED UP DRAWINGS FURNISHED BY THE CONTRACTOR AND OTHER SOURCES, INCLUDING THE REPORT FURNISHED, AND REPRESENT THE CONSTRUCTED WORKS TO OUR BEST INFORMATION AND BELIEF.



ELEVATIONS OF CROSSING UTILITIES ARE ASSUMED AT 4' COVER. ACTUAL SEPARATION DISTANCES MAY DIFFER FROM THOSE SHOWN ON THIS SHEET.

By	
Revision	
Date	

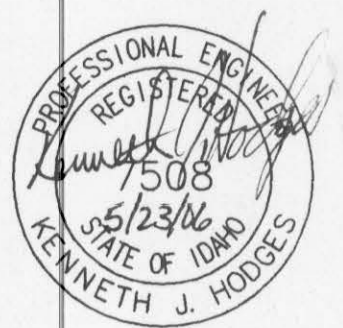
USKH
 Engineering • Land Surveying
 Planning • Materials Testing
 313 0 Street, Ste 200
 Lewiston, ID 83501
 Phone: (208) 746-2661
 Fax: (208) 746-6825

**LEWIS - CLARK STATE COLLEGE
 STORMWATER SYSTEM IMPROVEMENTS 2005**
 DPW No. 04-150
 PLAN AND PROFILE
 7TH AVENUE
 18+00 - 27+27.77

Project Mgr.	RLI
Drawn	RLI
Drawn	BDS
Checked	AG
Date	04-17-06
Sheet No.:	

C 1.2

USKH W.O. 737602



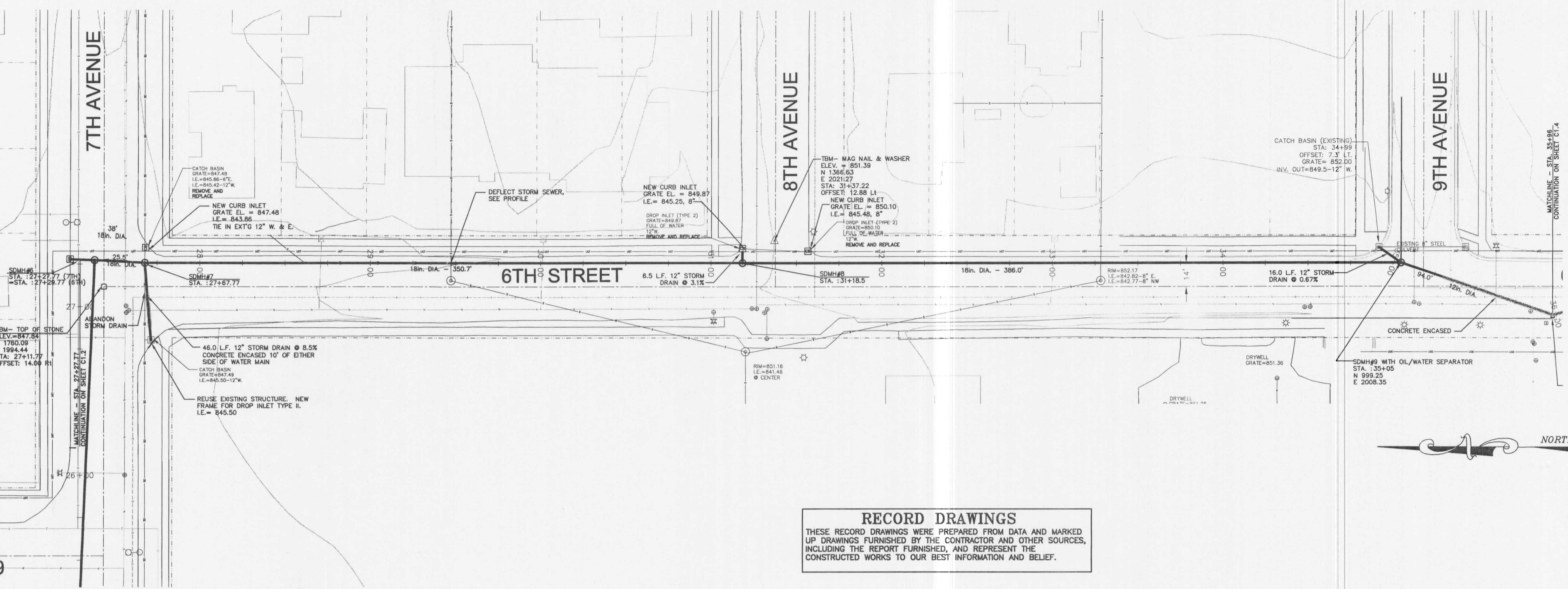
By	
Revision	
Date	

USKH
 Engineering • Land Surveying
 Planning • Materials Testing
 313 D Street, Ste 200
 Lewiston, ID 83501
 Phone: (208) 746-2661
 Fax: (208) 746-6825

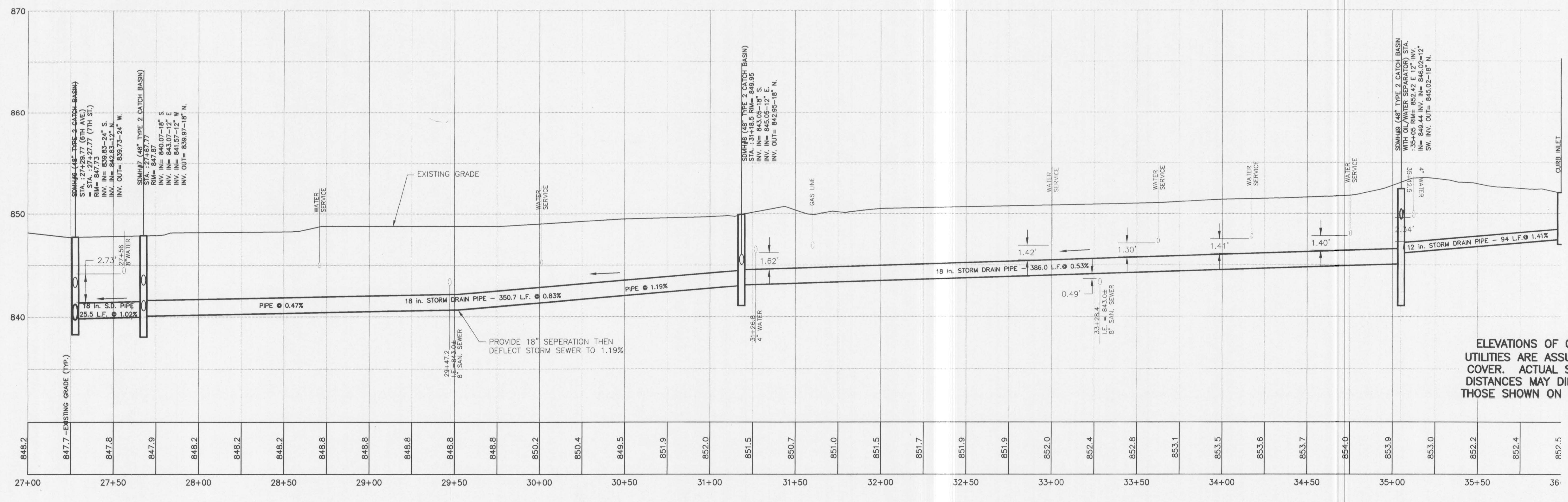
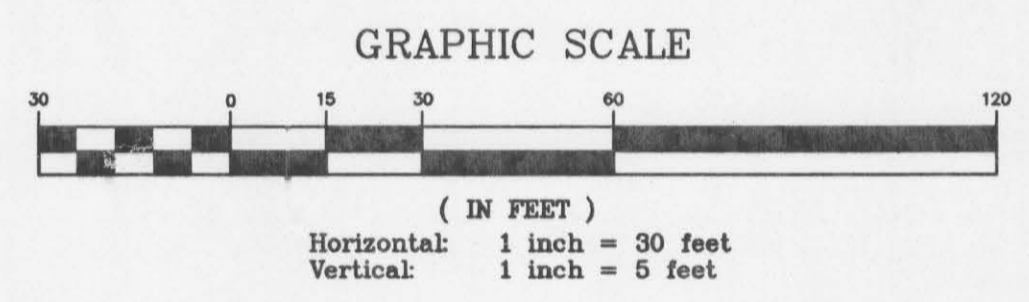
**LEWIS - CLARK STATE COLLEGE
 STORM WATER SYSTEM IMPROVEMENTS 2005**
 DPW No. 04-150
**PLAN AND PROFILE
 6TH STREET
 27+27.77 - 36+00**

Project Mgr.	RLI
Drawn	RLI
Drawn	BDS
Checked	AG
Date	04-17-06

Sheet No.:
C 1.3
 USKH W.O. 737602



RECORD DRAWINGS
 THESE RECORD DRAWINGS WERE PREPARED FROM DATA AND MARKED UP DRAWINGS FURNISHED BY THE CONTRACTOR AND OTHER SOURCES, INCLUDING THE REPORT FURNISHED, AND REPRESENT THE CONSTRUCTED WORKS TO OUR BEST INFORMATION AND BELIEF.



ELEVATIONS OF CROSSING UTILITIES ARE ASSUMED AT 4' COVER. ACTUAL SEPARATION DISTANCES MAY DIFFER FROM THOSE SHOWN ON THIS SHEET.

