

MILL ROAD STORMWATER PUMP STATION REHABILITATION CITY OF LEWISTON LEWISTON, IDAHO

JUNE 2019



AREA MAP



SITE MAP

90% SUBMITTAL
PRELIMINARY
PLANS
NOT FOR
CONSTRUCTION

PROJECT NO. 21-18-028

SHEET INDEX	
Sheet Number	Sheet Title
GENERAL	
G-001	COVER SHEET
G-002	GENERAL NOTES
CIVIL	
C-101	SITE PLAN
C-102	PUMP STATION DEMOLITION PLAN
C-501	DETAILS
C-502	DETAILS
PROCESS MECHANICAL	
D-101	PUMP STATION
D-301	PUMP STATION

ENGINEER:



J-U-B ENGINEERS, INC.

201 South Jackson Street, Moscow, ID 83843
p 208 746 9010 w www.jub.com

OWNER:

CITY OF LEWISTON
215 D STREET STE. B
P.O. BOX 617
LEWISTON, IDAHO 83501
TELEPHONE: (208) 746-1316



ENGINEERING PROJECT SUPERVISOR:
JOE KAUFMAN, PE

REUSE OF DOCUMENTS

J-U-B grants to CLIENT a nonexclusive, non-transferable license to use the Drawings, Specifications and/or Contract Documents (Documents) as follows:

CLIENT may make and retain copies of the Documents for reference, but J-U-B shall retain all common law, statutory and other reserved rights, including the copyright thereto, and the same shall not be reused on this Project or any other Project without J-U-B's prior written consent. Distribution of Documents to meet regulatory or permitting requirements, or for similar purposes, in connection with the Project, including but not limited to distribution to contractors or subcontractors for the performance of their work, is not to be construed as publication adversely affecting the reserved rights of J-U-B. The Documents are not intended for use in creating dtm for grading or earthwork, survey staking layout (unless specifically identified as such in the documents), or property boundary layouts.

Any reuse without written consent by J-U-B, or without verification or adoption by J-U-B for the specific purpose intended by the reuse, will be at CLIENT's sole risk and without liability or legal exposure to J-U-B. The CLIENT shall release, defend, indemnify, and hold J-U-B harmless from any claims, damages, actions or causes of action, losses, and expenses, including reasonable attorneys' and expert fees, arising out of or resulting from such reuse.

If the Documents are provided in electronic format, the electronic documents are subject to the provisions of J-U-B's "electronic document/data limited license" found at edocs.jub.com

LAST UPDATED: 6/4/2019

SHEET NUMBER:

G-001

OTHER J-U-B COMPANIES



THE
LANGDON
GROUP



GATEWAY
MAPPING
INC.

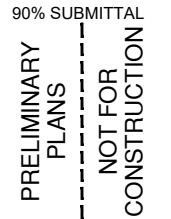


CALL 2 BUSINESS DAYS IN ADVANCE BEFORE
YOU DIG, GRADE, OR EXCAVATE FOR THE
MARKING OF UNDERGROUND MEMBER UTILITIES

1. ALL WORK SHALL CONFORM TO THE "IDAHO STANDARDS FOR PUBLIC WORKS CONSTRUCTION," 2017 EDITION, AND THE CONTRACT DOCUMENTS. IN THE CASE OF CONFLICT, THE MOST STRINGENT REQUIREMENT(S) SHALL PREVAIL.
2. RETAIN AND PROTECT ALL STRUCTURES, UTILITIES, ANCHORS AND OTHER SURFACE IMPROVEMENTS (E.G. CONCRETE AREAS, ASPHALT PAVEMENT, GRAVEL AREAS, ETC.), UNLESS OTHERWISE NOTED. REPAIR OR REPLACEMENT DUE TO DAMAGE DURING CONSTRUCTION SHALL BE AT NO COST TO THE OWNER.
3. CONTRACTOR SHALL PROVIDE UNINTERRUPTED EMERGENCY VEHICLE ACCESS THROUGH PROJECT WORK AREA AT ALL TIMES.
4. UNLESS OTHERWISE INDICATED, CONSTRUCT FINAL GRADE TO MATCH EXISTING GRADE.
5. ALL MATERIALS REMOVED FROM PROJECT SHALL BE LEGALLY DISPOSED OF.
6. PROVIDE A MINIMUM OF 48 HOURS NOTICE TO OWNER AND ENGINEER PRIOR TO COMMENCING ANY WORK ACTIVITIES. NOTICE TO HOMEOWNERS OR BUSINESSES AFFECTED BY CONSTRUCTION ACTIVITIES SHALL BE PROVIDED 48 HOURS IN ADVANCE.
7. THE CONTRACTOR SHALL NOTIFY THE APPROPRIATE UTILITY COMPANY PRIOR TO STARTING WORK NEAR ANY FACILITIES AND SHALL COORDINATE WORK WITH COMPANY REPRESENTATIVES. FOR EXISTING UTILITY LOCATIONS, CONTACT "CALL BEFORE YOU DIG" AT 1-800-342-1585 AT LEAST 48 HOURS PRIOR TO STARTING ANY EXCAVATIONS. COORDINATE SPECIFICALLY WITH AVISTA FOR HIGH PRESSURE GAS LINE AND POWER POLE ANCHORS. CONTACT TED BOYLE: (208) 794-0876.
8. WORK SHALL NOT BEGIN UNTIL A NOTICE TO PROCEED IS ISSUED BY THE CITY OR ENGINEER AND ALL NECESSARY PERMITS ARE OBTAINED.
9. THE CONTRACTOR SHALL HAVE AN APPROVED SET OF IMPROVEMENT PLANS ON THE JOB SITE AT ALL TIMES.
10. IF ANY EXCAVATIONS ARE REQUIRED WITHIN PUBLIC EASEMENTS, COMPACTION TEST RESULTS SHALL BE SUBMITTED TO THE PROJECT ENGINEER AND THE CITY BY A QUALIFIED ENGINEER WHICH CERTIFY THAT TRENCH BACKFILL WAS COMPACTED AS REQUIRED IN ACCORDANCE WITH ISPMC.
11. NO REVISIONS SHALL BE MADE TO THESE PLANS WITHOUT THE APPROVAL OF THE PROJECT ENGINEER.
12. ALLOW OWNER TO MAINTAIN STORMWATER PUMPING SERVICE WITH THE USE OF BYPASS PUMPING (SEE TECHNICAL SPECIFICATIONS). BYPASS PUMPING IS NOT ANTICIPATED TO REQUIRE CONTINUOUS OPERATION, BUT IS REQUIRED TO BE INSTALLED AND IN STANDBY MODE FOR USE IN STORM EVENTS. OWNER WILL WORK WITH CONTRACTOR TO COORDINATE PLANNED OUTAGES.
13. THE PROJECT AREA SHOWN ON PLANS WITHIN THE WORK LIMITS IS LESS THAN ONE ACRE. WORK OUTSIDE THE WORK LIMITS MAY INCREASE THE AREA TO BE GREATER THAN ONE ACRE. FOR PROJECTS GREATER THAN ONE ACRE IN SIZE AND HAVING THE POTENTIAL FOR RUNOFF DISCHARGES TO ANY SURFACE WATER BODY; THE CONTRACTOR SHALL FILE A NOTICE OF INTENT (NOI) AND A STORMWATER POLLUTION PREVENTION PLAN WITH THE EPA.
14. PROVIDE TRAFFIC CONTROL AND BARRICADES AS REQUIRED BY CITY.
15. THE CONTRACTOR SHALL BE RESPONSIBLE FOR ALL TRAFFIC CONTROL, IN ACCORDANCE WITH THE M.U.T.C.D., CURRENT EDITION. AT LEAST 48 HOURS PRIOR TO DISRUPTION OF ANY TRAFFIC, TRAFFIC CONTROL PLANS SHALL BE PREPARED AND SUBMITTED TO THE CITY AND ENGINEER FOR APPROVAL. NO WORK SHALL COMMENCE UNTIL A PERMIT IS ISSUED AND ALL APPROVED TRAFFIC CONTROL IS IN PLACE.
16. THE CONTRACTOR SHALL MAINTAIN THE STREETS, CURBS, AND ALL OTHER PUBLIC RIGHTS-OF-WAY IN A CLEAN, SAFE AND USEABLE CONDITION. ALL SOIL, ROCK, OR CONSTRUCTION DEBRIS SHALL BE PROMPTLY REMOVED FROM THE PUBLICLY OWNED PROPERTY DURING CONSTRUCTION, AND UPON COMPLETION OF THE PROJECT. ALL ADJACENT PROPERTY PRIVATE OR PUBLIC, SHALL BE MAINTAINED IN A CLEAN, SAFE AND USEABLE CONDITION.
17. ALL OPERATIONS CONDUCTED ON THE PREMISES SHALL BE RESTRICTED TO THE HOURS BETWEEN 7:00 A.M. AND 6:00 P.M., MONDAY THROUGH FRIDAY, UNLESS OTHERWISE APPROVED BY THE CITY IN WRITING. THIS INCLUDES THE WARMING UP, REPAIR, ARRIVAL, DEPARTURE OR RUNNING OF TRUCKS, EARTHMOVING EQUIPMENT, CONSTRUCTION EQUIPMENT, SNOW REMOVAL, OR ANY OTHER ASSOCIATED EQUIPMENT.
18. ALL PIPE AND FITTINGS SHALL HAVE RESTRAINED JOINTS.
19. OWNER RESERVES THE RIGHT TO SALVAGE ITEMS NOTED FOR DEMOLITION.
20. CONCRETE WORK SHALL BE PER ISPMC DIVISION 700. CONCRETE CLASS SHALL BE 4000A PSI PER SECTION 703 FOR FILLET IN THE BOTTOM OF THE WET WELL. CONCRETE SHALL BE 4000B PSI PER SECTION 703 FOR THE NEW WET WELL LID IF THE CONTRACTOR OPTS FOR A CAST-IN-PLACE LID.
21. CITY OF LEWISTON WILL PERFORM THE WET WELL CLEANING, INCLUDING BOTH INITIAL REMOVAL AND WASH DOWN.


1. NO DISRUPTION OF EXISTING STORMWATER SERVICES WHILE MAKING CONNECTIONS WILL BE ALLOWED WITHOUT THE SPECIFIC APPROVAL OF CITY.
2. CONTRACTOR TO FIELD VERIFY EXACT LOCATION OF MAINLINES, FORCEMAINS, AND SERVICES AS NEEDED TO COMPLETE THE WORK. WHEN CITY STAFF IS AVAILABLE, THE CONTRACTOR MAY REQUEST ASSISTANCE FROM THE CITY TO LOCATE MAINLINES, FORCEMAINS, AND SERVICE LINES.
3. PUMP STATION MECHANICAL MATERIAL/EQUIPMENT SHOWN IS SCHEMATIC. CONTRACTOR IS RESPONSIBLE FOR CORRECT QUANTITIES AND PIPE SPOOL LENGTHS AS REQUIRED FOR A FULL FUNCTIONAL INSTALLATION. VERIFY ALL DIMENSIONS (BOTH VERTICAL AND HORIZONTAL). VERIFY MANUFACTURER'S CONNECTION DETAILS AND INSTALLATION REQUIREMENTS. PROVIDE A DIMENSIONED DRAWING SHOWING ALL VALVES, GATES, FITTINGS, AND PIPE SPOOLS WITH SHOP DRAWING SUBMITTAL. COORDINATE ALL WORK WITH RELATED TRADES TO AVOID CONFLICTS.
4. INSTALL EQUIPMENT IN STRICT ACCORDANCE WITH THE DRAWINGS, SPECIFICATIONS, AND MANUFACTURERS RECOMMENDATIONS.
5. PROTECT ROAD SECTIONS (INCLUDING GRAVEL SHOULDER) ADJACENT TO THE SITE, UNLESS NOTED OTHERWISE. DAMAGE BY CONTRACTORS OPERATIONS SHALL BE REPAIRED AT CONTRACTORS EXPENSE.
6. UNLESS NOTED OTHERWISE, ALL PIPING AND FITTINGS SHALL BE DUCTILE IRON CLASS 53 OR STRONGER AND HAVE INTERNAL LINING OF CEMENT MORTAR. COAT EXTERIOR SURFACES WITH ASPHALTIC COATING 1 MIL MINIMUM THICKNESS, PER ANSI/AWWA C151/A21.51 AND ANSI/AWWA C110/A21.10.
7. ALL BOLTS, NUTS, WASHERS, FASTENERS, ETC., BRACE MATERIAL INSTALLED IN MOIST OR CORROSIVE ENVIRONMENT SHALL BE STAINLESS STEEL, TYPE 316. BURIED PIPE AND FITTING HARDWARE AND MATERIALS SHALL BE STANDARD UNLESS ATTACHING TO STRUCTURES, INSIDE VALVE VAULT, INSIDE WETWELL OR OTHERWISE CALLED OUT.
8. NOT ALL FEATURES ARE SHOWN IN BOTH PLAN AND SECTION VIEWS FOR CLARITY.
9. SOME ITEMS IN SECTION VIEW ARE ROTATED FOR CLARITY.
10. CLEAN, PRIME, AND PAINT ALL EXPOSED METAL, PIPING VALVES, AND FITTINGS WITHIN WETWELL (SEE TECHNICAL SPECIFICATIONS).

KEYED NOTES:	
N1	EXISTING ELECTRICAL, SEE ELECTRICAL DRAWINGS.
N2	RETAIN AND PROTECT EXISTING SIDEWALK AND ROADWAY.
N3	REMOVE AND DISPOSE OF EXISTING HATCH, VAULT LID, AND ACCESSORIES.
N4	REMOVE AND DISPOSE OF EXISTING RAILS, PADS, AND APPURTENANCES FROM PUMP SUCTION TO DISCHARGE LINE FLANGES NEAR BASE OF EXISTING CONTROL VALVE BOX LID. SALVAGE PANEL PUMPS AND MOTORS TO CITY OF LEWISTON.
N5	COORDINATE WITH CITY TO VERIFY DELIVERY TIME AND LOCATION OF SALVAGED ITEMS.
N6	NOT USED.
N7	DEMOLISH AND DISPOSE OF EXISTING WET WELL PUMP CABINET AND SKID AND ACCESSORIES. REPLACE WITH NEW REINFORCED CONCRETE LID.
N8	PROPOSED VALVE VAULT.
N9	DEMOLISH EXISTING DISCHARGE LINE TO ALLOW INSTALLATION OF VALVE VAULT, RETAIN AND PROTECT WET WELL PENETRATION.
N10	SAWCUT EXISTING CONCRETE PIPE TO PROVIDE A NEAT CLEAN EDGE FOR RECONNECTION. CONTRACTOR TO COORDINATE CONNECTION TO EXISTING DISCHARGE LINE WITH THE ENGINEER.

[illegible]

MILL ROAD STORMWATER PUMP STATION REHABILITATION
CITY OF LEWISTON

GENERAL
GENERAL NOTES

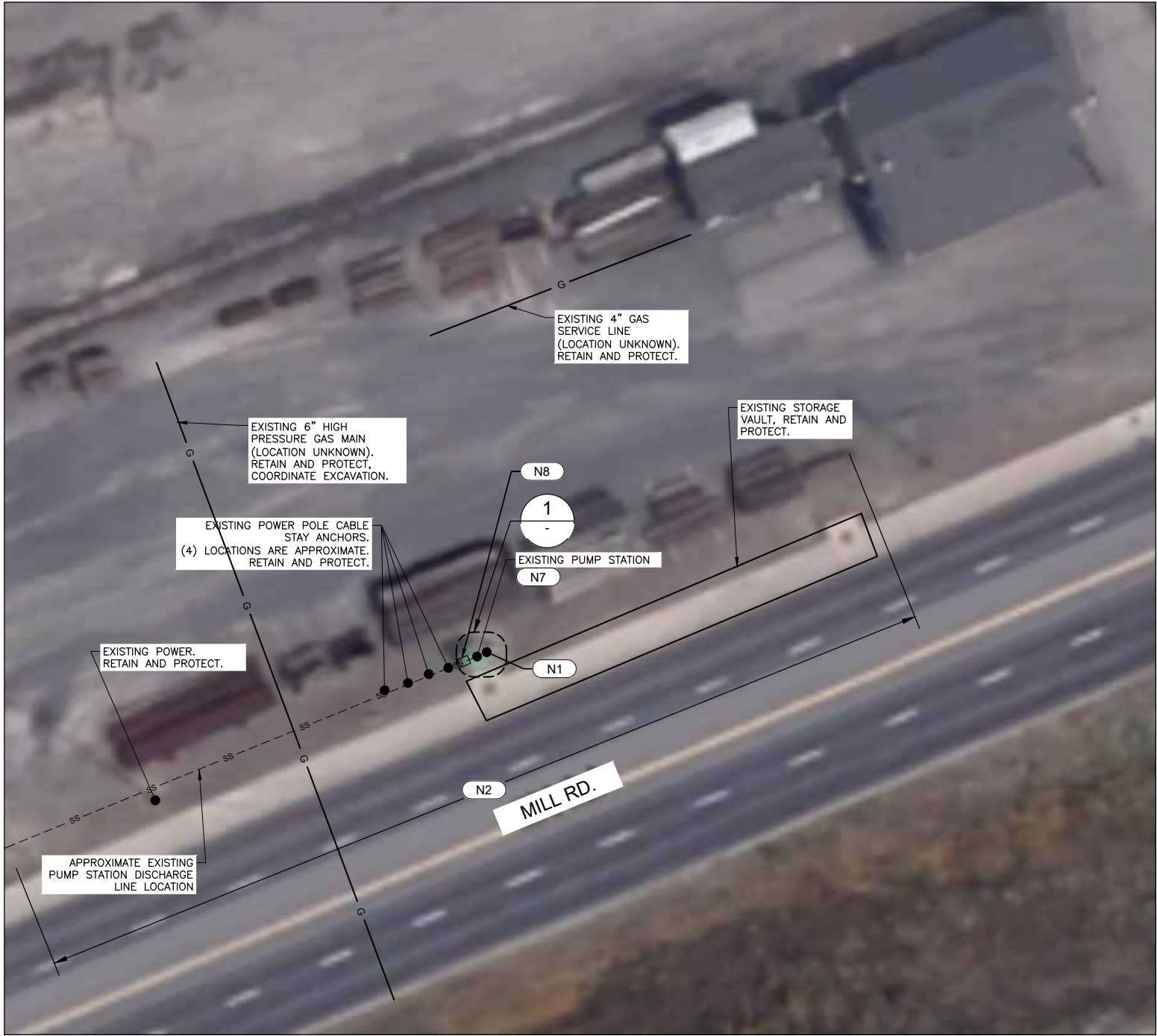
LE: 21-18-028_G-002
 JB PROJ. #: 21-18-028
 DRAWN BY: ALH
 DESIGN BY: CWS
 CHECKED BY: CRB

 AT FULL SCALE, IF NOT ONE
 INCH, SCALE ACCORDINGLY
 LAST UPDATED: 6/5/2019
 SHEET NUMBER:

G-002

KEYED NOTES:	
N1	EXISTING ELECTRICAL, SEE ELECTRICAL DRAWINGS.
N2	RETAIN AND PROTECT EXISTING SIDEWALK AND ROADWAY.
N7	DEMOLISH AND DISPOSE OF EXISTING WET WELL PUMP CABINET AND SKID AND ACCESSORIES. REPLACE WITH NEW REINFORCED CONCRETE LID.
N8	PROPOSED VALVE VAULT.


GENERAL NOTES:

- ALL LOCATIONS OF UNDERGROUND UTILITIES AND DEPICTED FEATURES ARE APPROXIMATE. CONTRACTOR TO ESTABLISH LOCATIONS OF ALL SITE UTILITIES AND FEATURES.
- R-O-W IS VERY NEAR THE NORTH EDGE OF THE EXISTING WET WELL AND DISCHARGE LINE. CONTRACTOR IS TO COMPLETE WORK WITHIN THE R-O-W.
- DISCHARGE LINE TERMINATION IS ±1,000 FEET WEST SOUTH WEST AT STORMWATER RIVER OUTLET STRUCTURE.



SITE MAP
SCALE:NTS

LEGEND

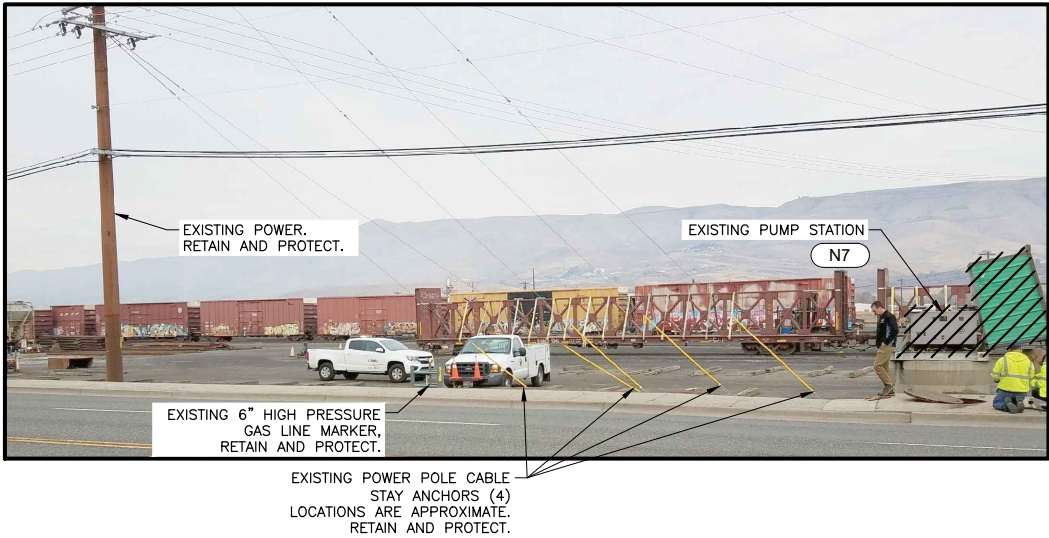
 REMOVE AND DISPOSE PER LOCAL, STATE, AND FEDERAL REGULATIONS

NOTES:

- SALVAGE TO CITY OF LEWISTON THE PANEL, PUMPS, AND MOTORS.



1 PHOTO DETAIL
SCALE:NTS



2 PHOTO DETAIL
SCALE:NTS



J-U-B ENGINEERS, INC.

J-U-B ENGINEERS, INC.
201 South Jackson Street
Moscow, ID 83843

Phone: 208.746.9010
www.jub.com

90% SUBMITTAL
PRELIMINARY
PLANS
NOT FOR
CONSTRUCTION

REUSE OF DRAWINGS
J-U-B SHALL RETAIN ALL COMMON LAW, STATUTORY, COPYRIGHT AND PATENT RIGHTS IN ALL DRAWINGS AND DOCUMENTS. NO PART OF ANY DRAWING OR DOCUMENT SHALL BE REPRODUCED OR TRANSMITTED IN ANY FORM OR BY ANY MEANS, ELECTRONIC OR MECHANICAL, INCLUDING PHOTOCOPYING, RECORDING, OR BY ANY INFORMATION STORAGE AND RETRIEVAL SYSTEM, WITHOUT THE WRITTEN CONSENT OF J-U-B ENGINEERS, INC. ANY REUSE WITHOUT WRITTEN CONSENT BY J-U-B WILL BE AT CLIENT'S SOLE RISK AND WITHOUT LIABILITY OR LEGAL EXPOSURE TO J-U-B.

REVISION		NO.	DESCRIPTION	BY	DATE
DATE	DESCRIPTION				

MILL ROAD STORMWATER PUMP STATION REHABILITATION
CITY OF LEWISTON

CIVIL
SITE PLAN

FILE : 21-18-028_C-101
JUB PROJ. # : 21-18-028
DRAWN BY: ALH
DESIGN BY: CWS
CHECKED BY: CRB
AT FULL SIZE, IF NOT ONE
INCH, SCALE ACCORDINGLY
LAST UPDATED: 6/5/2019


SHEET NUMBER:

C-101



Know what's below.
Call before you dig.

LEGEND

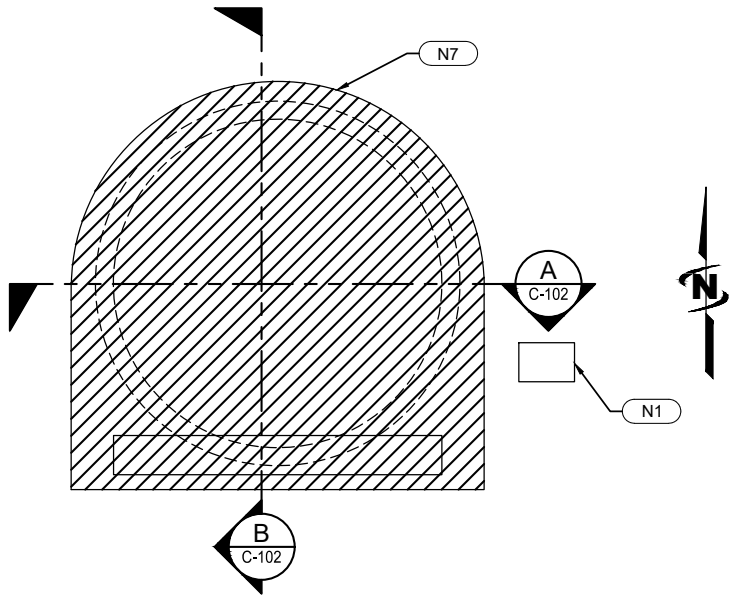
 REMOVE AND DISPOSE PER LOCAL, STATE, AND FEDERAL REGULATIONS

GENERAL NOTES:

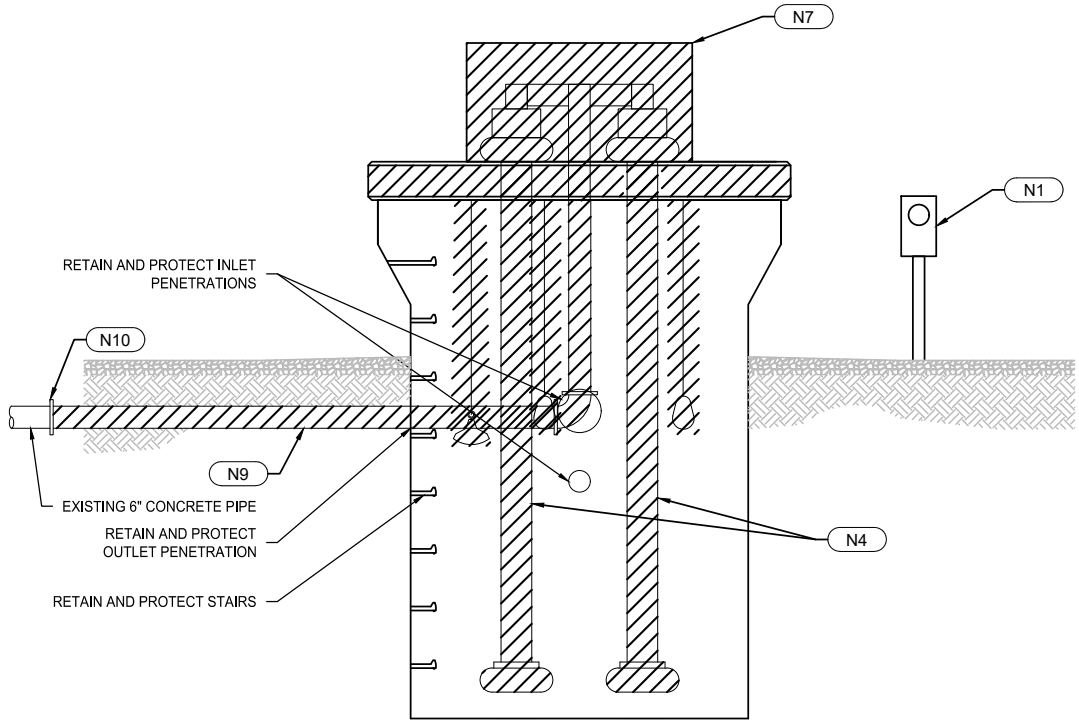
1. REFER TO ELECTRICAL SHEETS FOR ADDITIONAL DEMOLITION REQUIREMENTS.
2. COORDINATE ALL DEMOLITION WITH BYPASS PUMPING TO MAINTAIN UNINTERRUPTED SERVICE.

KEYED NOTES:

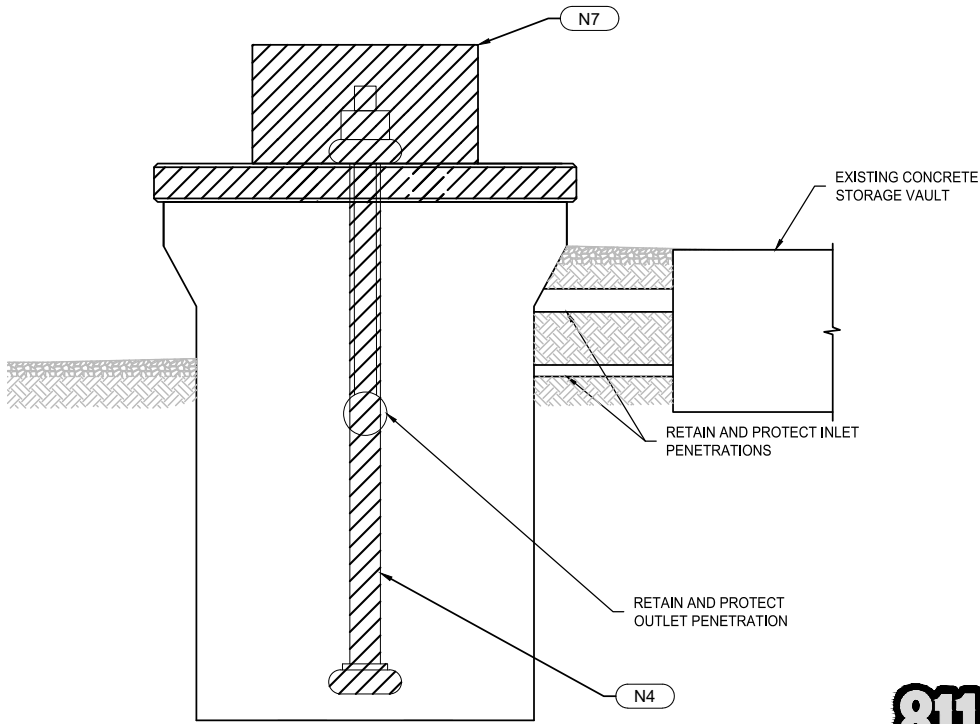
N1	EXISTING ELECTRICAL, SEE ELECTRICAL DRAWINGS.
N4	REMOVE AND DISPOSE OF EXISTING RAILS, PADS, AND APPURTENANCES FROM PUMP SUCTION TO DISCHARGE LINE FLANGES NEAR BASE OF EXISTING CONTROL VALVE BOX LID. SALVAGE PANEL PUMPS AND MOTORS TO CITY OF LEWISTON.
N7	DEMOLISH AND DISPOSE OF EXISTING WET WELL PUMP CABINET AND SKID AND ACCESSORIES. REPLACE WITH NEW REINFORCED CONCRETE LID.
N9	DEMOLISH EXISTING DISCHARGE LINE TO ALLOW INSTALLATION OF VALVE VAULT, RETAIN AND PROTECT WET WELL PENETRATION.
N10	SAWCUT EXISTING CONCRETE PIPE TO PROVIDE A NEAT CLEAN EDGE FOR RECONNECTION. CONTRACTOR TO COORDINATE CONNECTION TO EXISTING DISCHARGE LINE WITH THE ENGINEER.



DEMOLITION SITE PLAN
SCALE: NTS



A PUMP STATION DEMOLITION SECTION
SCALE: NTS



B PUMP STATION DEMOLITION SECTION
SCALE: NTS



Know what's below.
Call before you dig.



J-U-B ENGINEERS, INC.

J-U-B ENGINEERS, INC.
201 South Jackson Street
Moscow, ID 83843

Phone: 208.746.9010
www.jub.com

90% SUBMITTAL
PRELIMINARY
PLANS
NOT FOR
CONSTRUCTION

REUSE OF DRAWINGS
J-U-B SHALL RETAIN ALL COMMON LAW, STATUTORY, COPYRIGHT AND
OTHER RIGHTS IN THIS DRAWING. NO PART OF THIS DRAWING
SHALL BE REPRODUCED OR TRANSMITTED IN ANY FORM OR BY
ANY MEANS, ELECTRONIC OR MECHANICAL, INCLUDING
PHOTOCOPYING, RECORDING, OR BY ANY INFORMATION
SYSTEM, WITHOUT WRITTEN CONSENT BY J-U-B. ANY
REUSE WITHOUT WRITTEN CONSENT BY J-U-B WILL BE AT CLIENT'S
SOLE RISK AND WITHOUT LIABILITY OR LEGAL EXPOSURE TO J-U-B.

NO.	REVISION	DESCRIPTION	BY	DATE

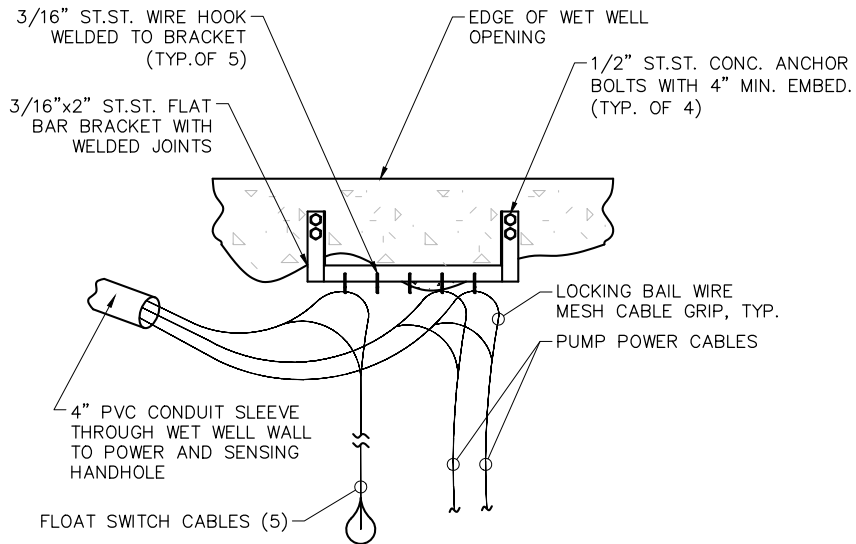
MILL ROAD STORMWATER PUMP STATION REHABILITATION
CITY OF LEWISTON

CIVIL
PUMP STATION DEMOLITION PLAN

FILE : 21-18-028, C-102
JUB PROJ. # : 21-18-028
DRAWN BY: ALH
DESIGN BY: CWS
CHECKED BY: CRB
AT FULL SIZE, IF NOT ONE
INCH, SCALE ACCORDINGLY
LAST UPDATED: 6/5/2019

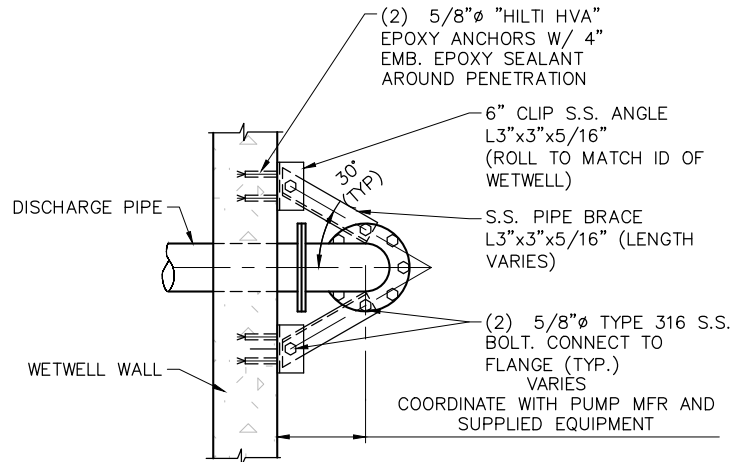
SHEET NUMBER:

C-102



NOTES:

- SEE LIFT STATION MECHANICAL PLAN FOR PROPER ORIENTATION.
- FIELD ADJUST TO AVOID CONFLICTS WITH PUMP REMOVAL AND TO OPTIMIZE FLOAT SWITCH PERFORMANCE.
- PROVIDE DIMENSIONED SHOP DRAWING SUBMITTAL.



PLAN VIEW

NOTES:

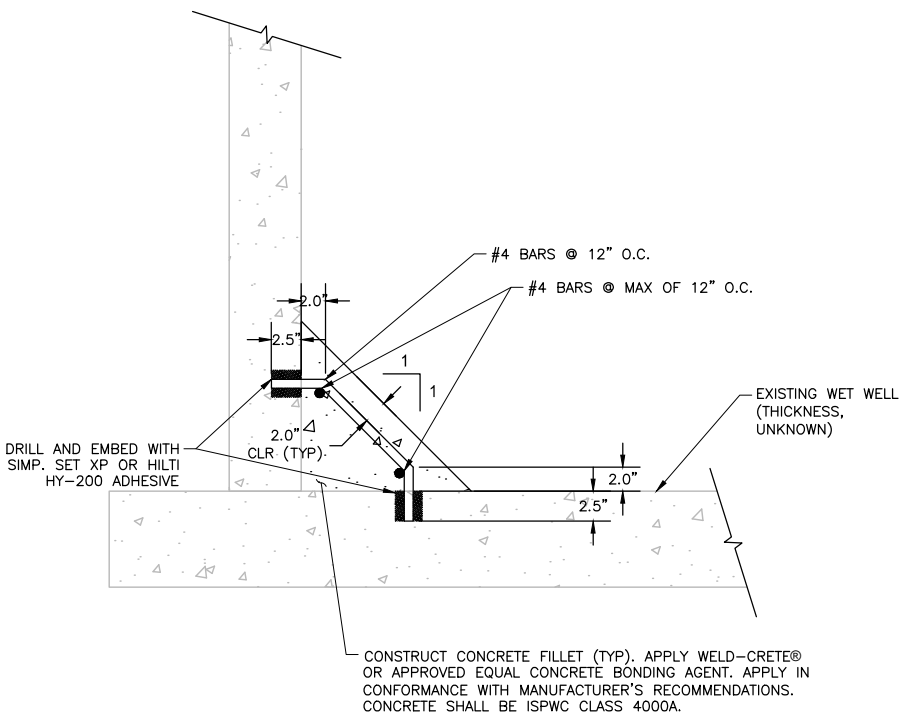
- MATERIALS TO BE STAINLESS STEEL.
- TOP SUPPORT MUST PROVIDE THRUST RESTRAINT.

1 CABLE SUPPORT BRACKET DETAIL

SCALE: NOT TO SCALE

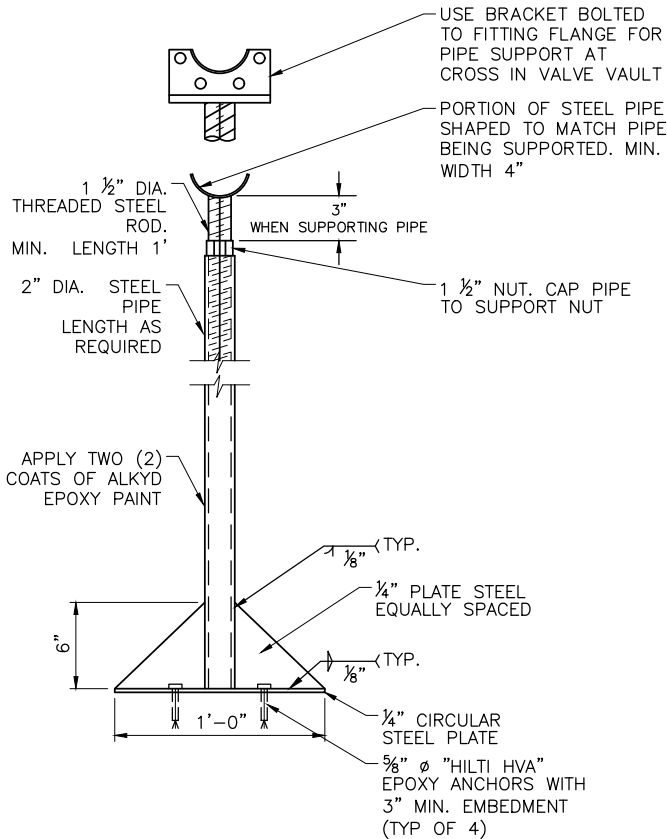
2 THRUST RESTRAINT PIPE SUPPORT DETAIL

SCALE: NOT TO SCALE



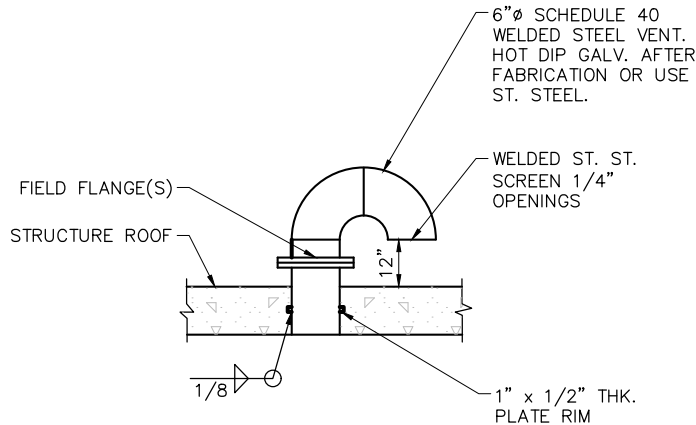
3 CONCRETE FILLET DETAIL

SCALE: NOT TO SCALE



4 TYP. STEEL PIPE SUPPORT DETAIL

SCALE: NOT TO SCALE



5 SCREENED VENT DETAIL

SCALE: NOT TO SCALE



Know what's below.
Call before you dig.



J-U-B ENGINEERS, INC.

J-U-B ENGINEERS, INC.

201 South Jackson Street
Moscow, ID 83843

Phone: 208.748.9010
www.jub.com

90% SUBMITTAL
PRELIMINARY
PLANS
NOT FOR
CONSTRUCTION

REUSE OF DRAWINGS
JUB SHALL RETAIN ALL COMMON LAW, STATUTORY, COPYRIGHT AND OTHER RIGHTS IN THIS DRAWING. NO PART OF THIS DRAWING SHALL BE REPRODUCED OR TRANSMITTED IN ANY FORM OR BY ANY MEANS, ELECTRONIC OR MECHANICAL, INCLUDING PHOTOCOPYING, RECORDING, OR BY ANY INFORMATION STORAGE AND RETRIEVAL SYSTEM, WITHOUT THE WRITTEN CONSENT OF JUB. ANY REUSE WITHOUT WRITTEN CONSENT BY JUB WILL BE AT CLIENT'S SOLE RISK AND WITHOUT LIABILITY OR LEGAL EXPOSURE TO JUB.

NO.	REVISION	DESCRIPTION	BY	DATE

MILL ROAD STORMWATER PUMP STATION REHABILITATION
CITY OF LEWISTON

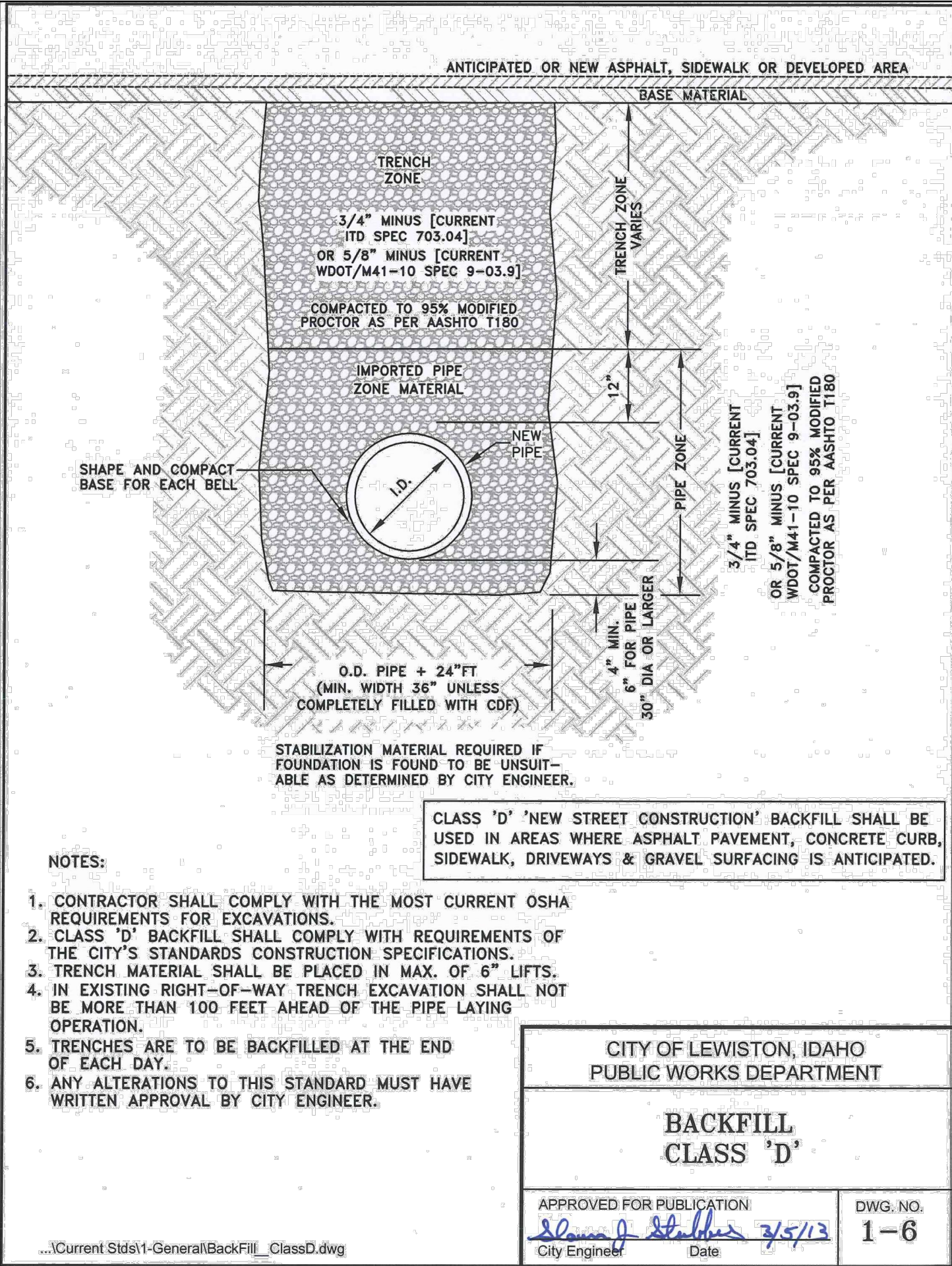
CIVIL
DETAILS

FILE: 21-18-028_D-101X
JUB PROJ. #: 21-18-028
DRAWN BY: ALH
DESIGN BY: CWS
CHECKED BY: CRB
AT FULL SIZE, IF NOT ONE
INCH, SCALE ACCORDINGLY
LAST UPDATED: 6/5/2019

SHEET NUMBER:

C-501

Plot Date: 5/21/2019 9:08 AM, Plotted By: Angela Heister, Date Created: 5/20/2019, W:\SOP\LEP\PROJECTS\JUB21-18-028 - MILL RD STORMWATER PUMP STATION\JUB21-18-028 - CAD\DWG\21-18-028 - D-101X.DWG

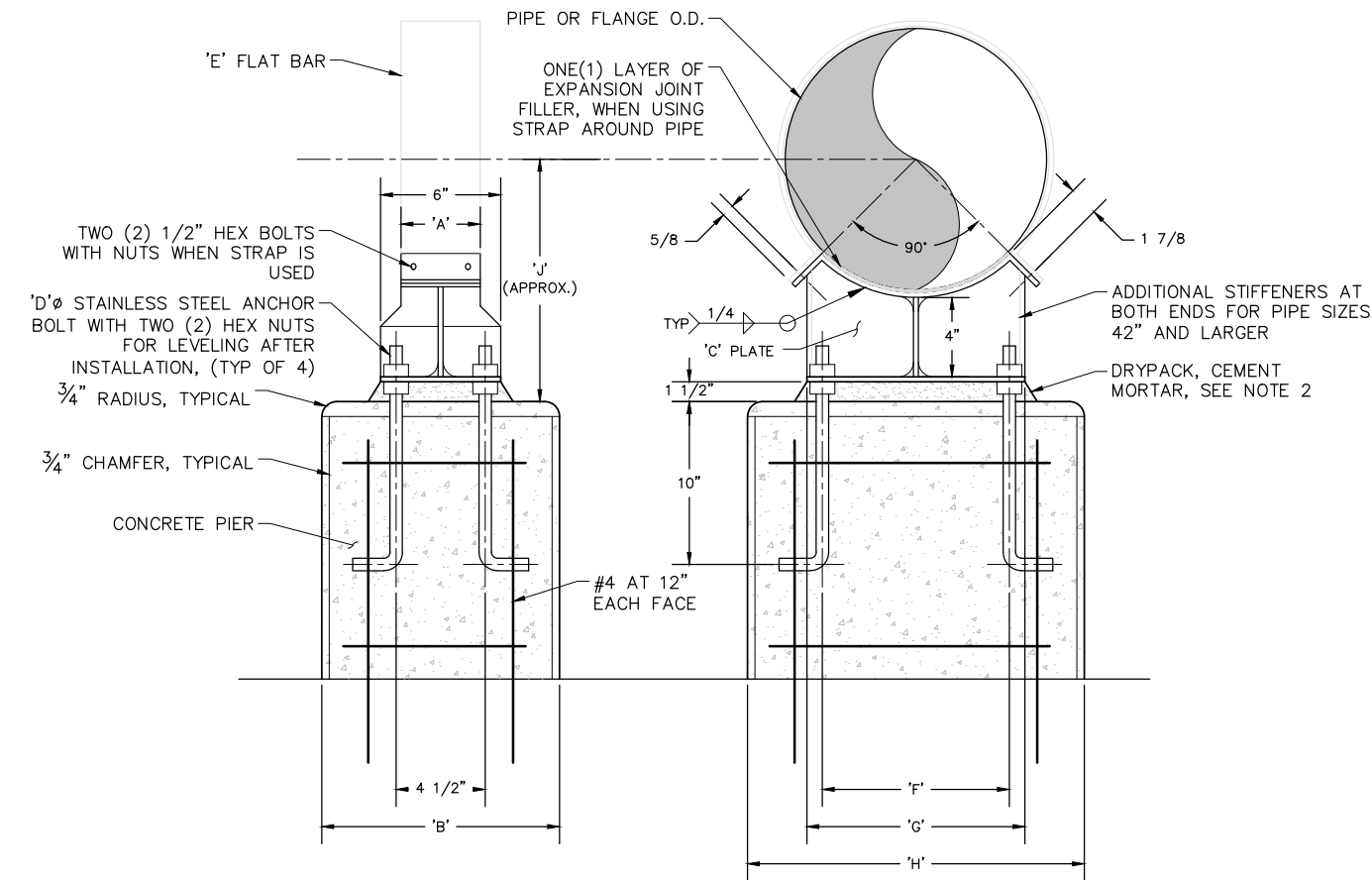


1 PIPE TRENCH BACKFILL DETAIL
SCALE: NOT TO SCALE

NOTES:

1. WHEN SUPPORTING PIPE AND FLANGE ALTERNATELY ON THE SAME LINE CONCRETE PIERS FOR PIPE SUPPORTS SHALL ALL HAVE THE SAME DIMENSION 'H' FOR FLANGE SUPPORT.
2. WHERE DIFFERENTIAL SETTLEMENT IS LIKELY TO OCCUR, OMIT AS DIRECTED BY THE ENGINEER.
3. HOT DIP GALVANIZE ENTIRE ASSEMBLY AFTER FABRICATION.

DIMENSIONS IN INCHES													
NOMINAL PIPE SIZE						SUPPORTING							
						PIPE				FLANGE			
	A	B	C	D	E	F	G	H	J	F	G	H	J
4 & 6	4	12	⅜	⅝	¼	4½	6	12	10	6½	9	16	13
8	4	12	⅜	⅝	¼	5	8	13	11	7½	9	16	14
10	4	12	⅜	⅝	¼	6	9	15	12	9	13	18	15
12	4	12	⅜	⅝	¼	7	11	17	13	10	15	20	16
14	4	12	⅜	⅝	¼	8	12	17	14	11	16	21	17
16	4	12	⅜	⅝	¼	9	13	19	15	12	18	24	18
18	4	12	⅜	⅝	¼	10	14	20	16	13	19	24	19
20	5	12	⅜	⅝	⅜	10	15	21	17	15	21	26	21
22	5	12	⅜	⅝	⅜	12	18	24	18	16	23	28	22
24	5	12	⅜	⅝	⅜	13	19	24	19	16	24	30	23
26	5	12	⅜	¾	⅜	14	21	27	20	18	26	32	24
30	5	12	⅜	¾	⅜	15	23	28	22	20	29	34	26
34	5	15	⅜	¾	⅜	18	26	32	24	22	33	39	29
36	6	15	⅜	¾	⅜	19	27	32	25	24	34	40	30
42	6	18	½	1	⅜	21	31	36	28	27	39	45	33



2 CONCRETE PIPE SUPPORT DETAIL
SCALE: NOT TO SCALE

JUB
J-U-B ENGINEERS, INC.

J-U-B ENGINEERS, INC.
201 South Jackson Street
Moscow, ID 83843
Phone: 208.746.9010
www.jub.com

90% SUBMITTAL
PRELIMINARY PLANS
NOT FOR CONSTRUCTION

REUSE OF DRAWINGS
JUB SHALL RETAIN ALL COMMON LAW, STATUTORY, COPYRIGHT AND OTHER RIGHTS IN ANY DESIGN OR INVENTION. NO PART OF ANY DESIGN OR INVENTION SHALL BE REPRODUCED OR TRANSMITTED IN ANY FORM OR BY ANY MEANS, ELECTRONIC OR MECHANICAL, INCLUDING PHOTOCOPYING, RECORDING, OR BY ANY INFORMATION STORAGE AND RETRIEVAL SYSTEM, WITHOUT THE WRITTEN CONSENT OF JUB. ANY REUSE WITHOUT WRITTEN CONSENT BY JUB WILL BE AT CLIENT'S SOLE RISK AND WITHOUT LIABILITY OR LEGAL EXPOSURE TO JUB.

NO.	REVISION	DESCRIPTION	BY	DATE

MILL ROAD STORMWATER PUMP STATION REHABILITATION
CITY OF LEWISTON

CIVIL DETAILS

FILE: 21-18-028_D-101X
JUB PROJ. #: 21-18-028
DRAWN BY: ALH
DESIGN BY: CWS
CHECKED BY: CRB
AT FULL SIZE, IF NOT ONE INCH SCALE ACCORDINGLY
LAST UPDATED: 6/5/2019
SHEET NUMBER:
C-502

811
Know what's below.
Call before you dig.

1. INITIAL LEVEL CONTROLLER SETTINGS (FIELD ADJUST TO OPTIMIZE PERFORMANCE AS REQUIRED):

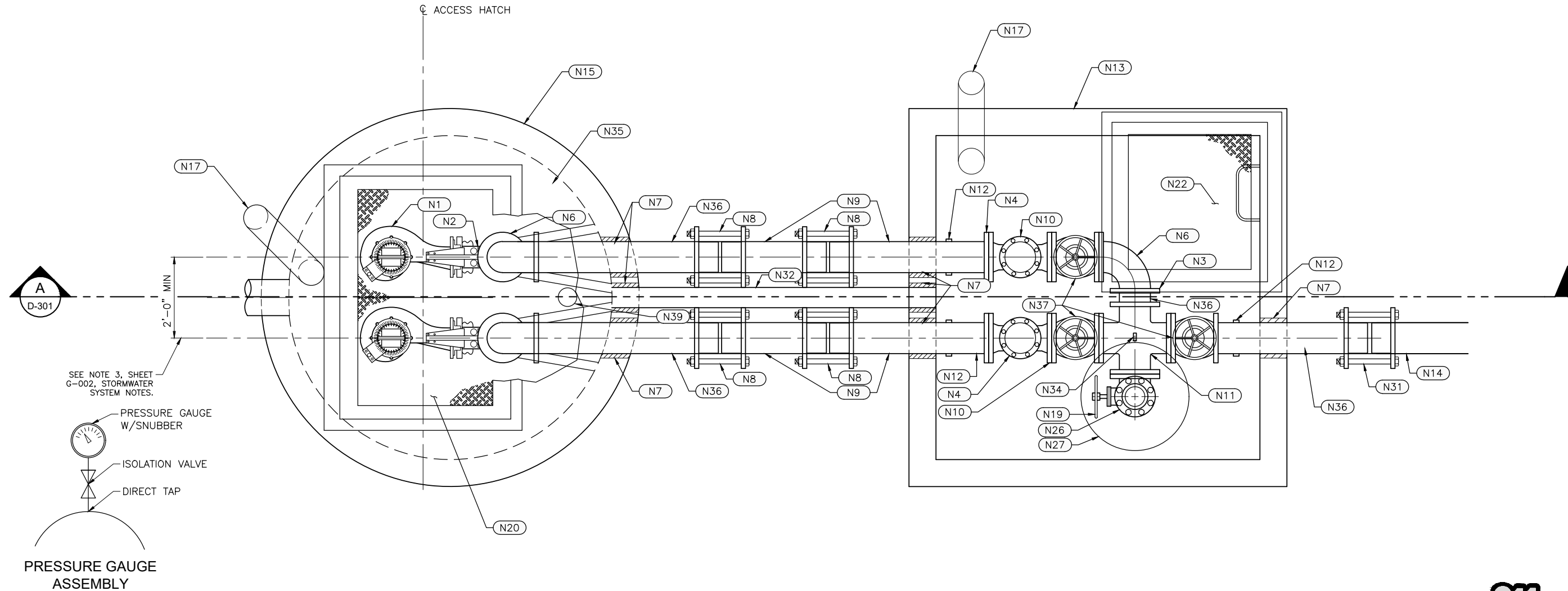
ELEVATION FROM BOTTOM WET WELL (FEET)	CONTROLLER FUNCTION FOR RISING LEVEL	CONTROLLER FUNCTION FOR FALLING LEVEL
6.50	HIGH WATER ALARM ON	HIGH WATER ALARM OFF
6.00	LAG PUMP ON	
5.50	LEAD PUMP ON	
2.50		BOTH PUMPS OFF AND ALTERNATE LEAD/LAG
2.00	LOW WATER ALARM OFF	LOW WATER ALARM ON

2. INSTALL PUMP AND ALL RELATED PUMP EQUIPMENT IN STRICT ACCORDANCE WITH THE DRAWINGS, SPECIFICATIONS, AND MANUFACTURERS RECOMMENDATIONS.
3. INSTALL EXPANSION JOINT MATERIAL BETWEEN CONCRETE STRUCTURES AND ANY CONCRETE SLABS.
4. SEE ELECTRICAL DRAWINGS AND SPECIFICATIONS FOR CONTROL PANEL LOCATION AND REQUIREMENTS.
5. CONTRACTOR TO FIELD MEASURE AND PROVIDE A PRE-CAST CONCRETE LID FOR THE EXISTING WET WELL WITH ACCESS HATCH, VENT, HOIST BRACKET AND ACCESSORIES. CONTRACTOR SHALL SUBMIT STAMPED STRUCTURAL DESIGN DRAWINGS AND CALCULATIONS BY A PROFESSIONAL ENGINEER LICENSED IN THE STATE OF IDAHO PRIOR TO PURCHASE OR INSTALLATION. THE LID SHALL SUPPORT A LIVE LOAD OF 100 PSF. AT THE CONTRACTOR'S OPTION, CONTRACTOR CAN DESIGN AND PROVIDE A CAST-IN-PLACE CONCRETE LID INCORPORATING REQUIRED EQUIPMENT. FOR THE DESIGN OF CAST-IN-PLACE LID, THE CONTRACTOR SHALL SUBMIT STAMPED STRUCTURAL DESIGN DRAWINGS AND CALCULATIONS BY A PROFESSIONAL ENGINEER LICENSED IN THE STATE OF IDAHO PRIOR TO PURCHASE OF INSTALLATION. THE LID SHALL SUPPORT A LIVE LOAD OF 100 PSF.


- (N1) SUBMERSIBLE PUMP
- (N2) 4" PUMP QUICK DISCONNECT DISCHARGE ELBOW AND MOUNTING BASE WITH EPOXY-SET ST.ST. ANCHOR BOLTS, VERIFY SIZE WITH PUMP MFR.
- (N3) 6" UNI-FLANGE (MEGA-LUG)
- (N4) 6" RESTRAINED FLANGE COUPLING ADAPTER
- (N5) 4" PIPE SPOOL (FLGXPE)
- (N6) 6" 90° LONG RADIUS ELBOW (FLGXFLG)
- (N7) WATERTIGHT WALL PENETRATION, MANHOLE ADAPTER "A-LOK", "KOR-N-SEAL" OR EQUIVALENT
- (N8) DUAL 6" FLEXIBLE SLEEVE-TYPE PIPE COUPLINGS
- (N9) 6" PIPE SPOOL (PEXPE)
- (N10) 6" RUBBER FLAPPER SWING CHECK VALVE (EPOXY OR RUBBER LINED) (FLGXFLG)
- (N11) 6"x6" CROSS (FLG)
- (N12) STEEL VALVE/PIPE SUPPORT, SEE DETAIL
- (N13) 6'-0"x6'-0"x6'-6" HIGH PRECAST CONCRETE WALL VAULT WITH PLASTIC COATED STEPS. 6" MIN. WALL THICKNESS. HS-20 RATED. MODIFY OPENINGS AS REQ'D TO ACCOMMODATE PIPING AND ACCESS HATCH AS SHOWN. COAT EXTERIOR WITH WATERPROOFING TREATMENT.
- (N14) EXISTING 6" CONCRETE FORCEMAIN
- (N15) EXISTING 60"Ø PRECAST CONCRETE MANHOLE. MANHOLE LID IS 84"Ø.

- (N16) STAINLESS STEEL PUMP REMOVAL SYSTEM, COMPLETE WITH MOUNTING BRACKETS.
- (N17) SCREENED VENT, SEE DETAIL
- (N18) EXISTING STORMWATER INLETS.
- (N19) 4" PLUG VALVE WITH HANDWHEEL (FLGxFLG)
- (N20) 30"x48" MIN. ALUMINUM DOUBLE LEAF ACCESS DOOR WITH STAINLESS STEEL HARDWARE AND SAFETY GRATE – OPENING DIMENSIONS AND DOOR LOCATION SHALL BE IN ACCORDANCE WITH PUMP MANUFACTURERS REQUIREMENTS. HATCH SHALL BE RATED FOR 100PSF LIVE LOAD AND WATER-TIGHT. PROVIDE RECESSED, LOCKABLE HASP COVERED WITH HINGED LID FLUSH WITH SURFACE. INSTALL DOOR SUCH THAT ENTRY SYSTEM IS NOT IN CONFLICT WITH DOOR. USE HALLIDAY OR APPROVED EQUAL. PLUMB HATCH RIM DRAIN TO WETWELL.
- (N21) STAINLESS STEEL LIFTING CHAIN OR CABLE (MIN. STRENGTH 6,000 LBS.) WITH S.S. CLEVIS FITTING AT EACH END
- (N22) 30"x30" MIN. ALUMINUM SINGLE LEAF ACCESS DOOR WITH STAINLESS STEEL HARDWARE AND SAFETY GRATE. HATCH SHALL BE HS-20 TRAFFIC RATED AND WATER-TIGHT. PROVIDE RECESSED, LOCKABLE HASP COVERED WITH HINGED LID FLUSH WITH SURFACE. INSTALL DOOR SUCH THAT ENTRY SYSTEM IS NOT IN CONFLICT WITH DOOR. PLUMB HATCH RIM DRAIN TO VAULT FLOOR DRAIN. USE HALLIDAY OR APPROVED EQUAL.
- (N23) CABLE SUPPORT BRACKET. SEE DETAIL. SEE ELECTRICAL DRAWINGS FOR ADDITIONAL REQUIREMENTS.
- (N24) THRUST RESTRAINT PIPE SUPPORT, SEE DETAIL.

- N25 CRUSHED AGGREGATE ($\frac{3}{4}$ " MINUS) COMPACTED TO 95%
ASTM D-1557 OR MODIFIED PROCTOR
- N26 4" ALUM. CAM-LOCK FITTING WITH PRESSURE CAP
- N27 24"Ø LOCKABLE MANHOLE LID CAST IN TOP SLAB.
CENTER OVER CAM-LOCK FITTING
- N28 6"x4" REDUCER.
- N29 NOT USED.
- N30 4" FLAP CHECK VALVE.
- N31 6"x6" COUPLER FROM DIP TO CONCRETE PIPE.
- N32 4" PVC DRAIN TO WETWELL SLOPED AT 2% MIN.
- N33 FLOAT SWITCHES AND BRACKET. SEE DETAIL. SEE
ELECTRICAL DRAWING FOR ADDITIONAL REQUIREMENTS.
- N34 PRESSURE GAUGE ASSEMBLY (SEE DETAIL THIS SHEET)
- N35 NEW CONCRETE LID. SEE NOTE 5 (THIS SHEET). VERIFY
EXISTING CONCRETE CONDITIONS WITH PROJECT
ENGINEER PRIOR TO PROCUREMENT.
- N36 6" PIPE SPOOL (FLGxPE)
- N37 6" PLUG VALVE HANDWHEEL (FLGxPE)
- N38 CONCRETE VALVE/PIPE SUPPORT. SEE DETAIL.
- N39 PUMP HOIST BRACKET.
- N40 BACKFILL PIPE TRENCH PER CITY OF LEWISTON'S
STANDARD DWG 1-6, "BACKFILL CLASS D". SEE SHEET
C-502.



SCALE: 0 6" 1'-0" 2'-0"



1"=1'-0" at Full Scale



201 South Jackson Street
Moscow, ID 83843


Phone: 208.746.9010
www.jub.com

90% SUBMITTAL
PRELIMINARY PLANS
NOT FOR CONSTRUCTION

J-J-B SHALL RETAIN ALL COMMON LAW, STATUTORY, COPYRIGHT AND OTHER RESERVED RIGHTS OF THESE DRAWINGS, AND THE SAME SHALL NOT BE REUSED WITHOUT J-J-B'S PRIOR WRITTEN CONSENT. ANY REUSE WITHOUT WRITTEN CONSENT BY J-J-B WILL BE AT CLIENT'S SOLE RISK AND WITHOUT LIABILITY OR LEGAL EXPOSURE TO J-J-B.

MILL ROAD STORMWATER PUMP STATION REHABILITATION
CITY OF LEWISTON

PROCESS MECHANICAL PUMP STATION

FILE : 21-18-028_D-101X
JUB PROJ. # : 21-18-028
DRAWN BY: ALH
DESIGN BY: CWS
CHECKED BY: CRB

AT FULL SIZE, IF NOT ONE
INCH, SCALE ACCORDINGLY
LAST UPDATED: 6/5/2019

SHEET NUMBER:

D-101



**Know what's below.
Call before you dig.**




201 South Jackson Street
Moscow, ID 83843

Phone: 208.746.9010
www.jub.com

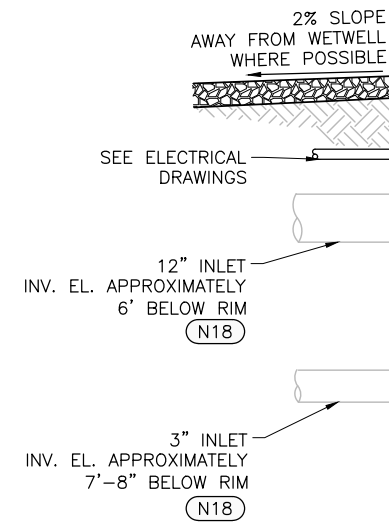
OTHER RESERVED RIGHTS OF THESE DRAWINGS, AND THE SAME SHALL NOT BE REUSED WITHOUT J-U-B'S PRIOR WRITTEN CONSENT. ANY REUSE WITHOUT WRITTEN CONSENT BY J-U-B WILL BE AT CLIENT'S SOLE RISK AND WITHOUT LIABILITY OR LEGAL EXPOSURE TO J-U-B.

REVISION					
NO.	DESCRIPTION	BY	APR	DATE	

PROCESS MECHANICAL PUMP STATION

FILE: 21-18-028, D-101X
 JOB PROJ. #: 21-18-028
 DRAWN BY: ALH
 DESIGN BY: CWS
 CHECKED BY: CRB

 AT FULL SIZE, IF NOT ONE
 INCH, SCALE ACCORDINGLY
 LAST UPDATED: 6/5/2019
 SHEET NUMBER:

D-301



— VERIFY INVERT ELEVATION WITH PROJECT ENGINEER BEFORE INSTALLATION. Y

— CONSTRUCT CONCRETE FILLET (TYP)
APPLY WELD—CRETE® OR APPROVED
EQUAL BONDING AGENT. APPLY IN
CONFORMANCE WITH MANUFACTURERS
RECOMMENDATIONS

- CONSTRUCT CONCRETE FILLET (TYP)
- APPLY WELD-CRETE® OR APPROVED
EQUAL BONDING AGENT. APPLY IN
CONFORMANCE WITH MANUFACTURERS
RECOMMENDATIONS - SLOPE TO DRAIN

3"
ON ALL SIDES

LIFT STATION - MECHANICAL SECTION

SCALE: 0 6" 1'-0" 2'-0"
1"=1'-0" at Full Scale



Plot Date: 5/20/2019 9:08 AM Plotted By: Angela Hester
Date Created: 6/4/2019 \\MSCF\FILES\PUBLIC\PROJECTS\UB21-18-028 - MILL RD STORMWATER PUMP STATION\21-18-028 - CAD\SHEET1-18-028 - D-101X.DWG

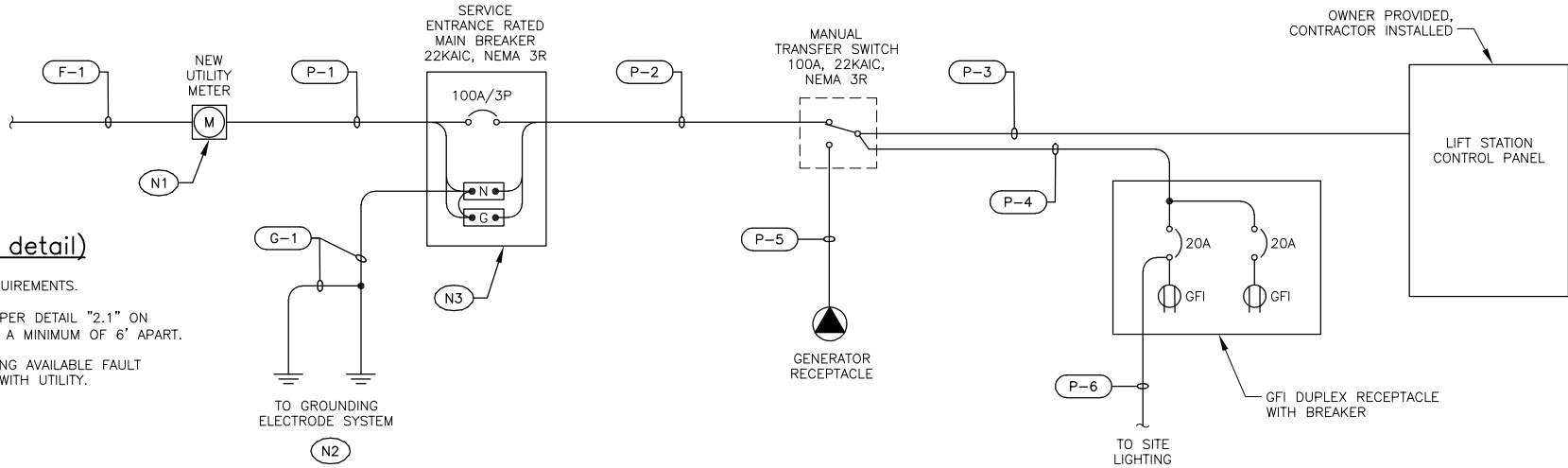
Plot Date: 6/5/2019 3:44 PM Plotted By: Teri Schaeffer
Date Created: 5/22/2019 3:03:19 PM User: JUB-MILL ROAD STORMWATER PUMP STATION DRAWINGS M111-E-002.DWG

NOTES: (for this detail)

- (N1) INSTALL PER UTILITY REQUIREMENTS.
- (N2) PROVIDE GROUND RODS PER DETAIL "2.1" ON SHEET "E-202". SPACE A MINIMUM OF 6' APART.
- (N3) PROVIDE PLACARD SHOWING AVAILABLE FAULT CURRENT. COORDINATE WITH UTILITY.

UTILITY CONTACT:

AVISTA, TOD BOYLE, (208) 794-0876.



MAIN SWITCHBOARD LOAD CALCULATION				
120/240 VAC, 3Ø, 4w				
		LOAD (VA)		
		Ø A	Ø B	Ø C
M	PUMP 1	2,600	2,600	2,600
M	PUMP 2	2,600	2,600	2,600
	LIGHTING	70	70	70
	RECEPTACLE	180	180	180
	CONTROL POWER	5	5	5
Total Connected Load (VA):		5,455	5,455	5,455
+ 25% of Largest Motor:		650	650	650
Total Code Load (VA):		6,105	6,105	6,105
Total Code Load (Amps):		51	51	51

1.1 ONE-LINE DIAGRAM

NOT TO SCALE

C&W SCHEDULE								
ABBREVIATIONS: CAB-CABLE CTL-CONTROL DISC-DISCONNECT JB-JUNCTION BOX LEV-LEVEL MFG-MANUFACTURER MTR-MOTOR PRESS-PRESSURE PR-PAIR PWR-POWER RCPT-RECEPTACLE								
SIG-SIGNAL SPC-SHIELDED POWER CABLE STP-SHIELDED TWISTED PAIR CABLE SW-SWITCH XMITTER-TRANSMITTER (2-7C)- INDICATES TWO-SEVEN CONDUCTOR CABLES								
CONDUIT TAG	SERVICE	ROUTING		CONDUIT		CONDUCTORS		REMARKS OR REFERENCE DRAWING
		FROM	TO	QTY	SIZE	(QTY) & SIZE	GROUND SIZE	
F-1	UTILITY SERVICE	EXISTING UTILITY SERVICE TRANSFORMER	UTILITY METER	1	EX.			COORDINATE WITH UTILITY TO EXTEND SERVICE TO NEW LOCATION
P-1	ELECTRICAL SERVICE	UTILITY METER	SERVICE DISCONNECT MAIN BREAKER	1	1-1/2"	4 (3) AWG		
P-2	ELECTRICAL SERVICE	SERVICE DISCONNECT MAIN BREAKER	MANUAL TRANSFER SWITCH	1	1-1/2"	4 (3) AWG	8 AWG	
P-3	ELECTRICAL SERVICE	MANUAL TRANSFER SWITCH	LIFT STATION CONTROL PANEL	1	1-1/2"	3 (3) AWG	8 AWG	
P-4	POWER OUTLET	MANUAL TRANSFER SWITCH	POWER OUTLET BOX	1	1"	(2) 8 AWG	10 AWG	
P-5	GENERATOR CONNECTION	MANUAL TRANSFER SWITCH	GENERATOR RECEPTACLE	1	-	(4) 3 AWG	8 AWG	
P-6	SITE LIGHTING	POWER OUTLET BOX	SITE LIGHTING SWITCH	1	3/4"	(2) 12 AWG	12 AWG	
P-7	PUMP POWER	LIFT STATION CONTROL PANEL	NEMA 4X SS JUNCTION BOX	1	1"	3 (10) AWG	12 AWG	
P-8	PUMP POWER	LIFT STATION CONTROL PANEL	NEMA 4X SS JUNCTION BOX	1	1"	3 (10) AWG	12 AWG	
P-9	PUMP POWER	NEMA 4X SS JUNCTION BOX	PUMP 1	1	2"	MFG CAB		
P-10	PUMP POWER	NEMA 4X SS JUNCTION BOX	PUMP 2	1	2"	MFG CAB		
C-1	ALARM BEACON	NEW LIFT STATION CONTROL PANEL	NEW ALARM BEACON	1	3/4"	(2) 14 AWG	14 AWG	
C-2	FLOATS	NEW LIFT STATION CONTROL PANEL	NEMA 4X SS JUNCTION BOX	1	1"	(10) 14 AWG	14 AWG	
C-3	FLOATS	NEMA 4X SS JUNCTION BOX	FLOATS IN WET WELL	1	2"	MFG CAB		
G-1	SERVICE GROUND	SERVICE DISCONNECT MAIN BREAKER	GROUND ROD	1	3/4"		4 AWG	PVC CONDUIT ABOVE GROUND ONLY
G-2	GROUNDING ELECTRODE SYSTEM	GROUND ROD	GROUND ROD	1			4 AWG	

LUMINAIRE SCHEDULE							
TYPE	DESCRIPTION	VOLTS	LAMPS	WATTS / FIXTURE	MOUNTING	MANUFACTURE NUMBER	NOTES
						BASIS OF DESIGN	
F1	LED POLE LIGHT, TYPE III DISTRUBUTION, 4K, DARK BRONZE FINISH, BACK LIGHT CONTROL, BUTTON PHOTOCELL, SINGLE FUSE, BIRD DETERRENT SPIKES, SQUARE POLE UNIVERSAL MOUNTING ADAPTER	120 VAC	LED	45	POLE	LITHONIA #DSXWPM-LED-20C-530-40K-T3M-120-SPUMBA-PE-SF-BSW-DBXD, OR APPROVED EQUAL	MOUNTING HEIGHT SHALL BE 12'-3" (8' ABOVE TOP OF WET WELL)
F2	ROTATING ALARM BEACON, RED LENS, TYPE 4X, IP66 ENCLOSURE	120 VAC	INC	25		FEDERAL SIGNAL #225-120A, OR APPROVED EQUAL	

4.1 ELECTRICAL SCHEDULES

NOT TO SCALE

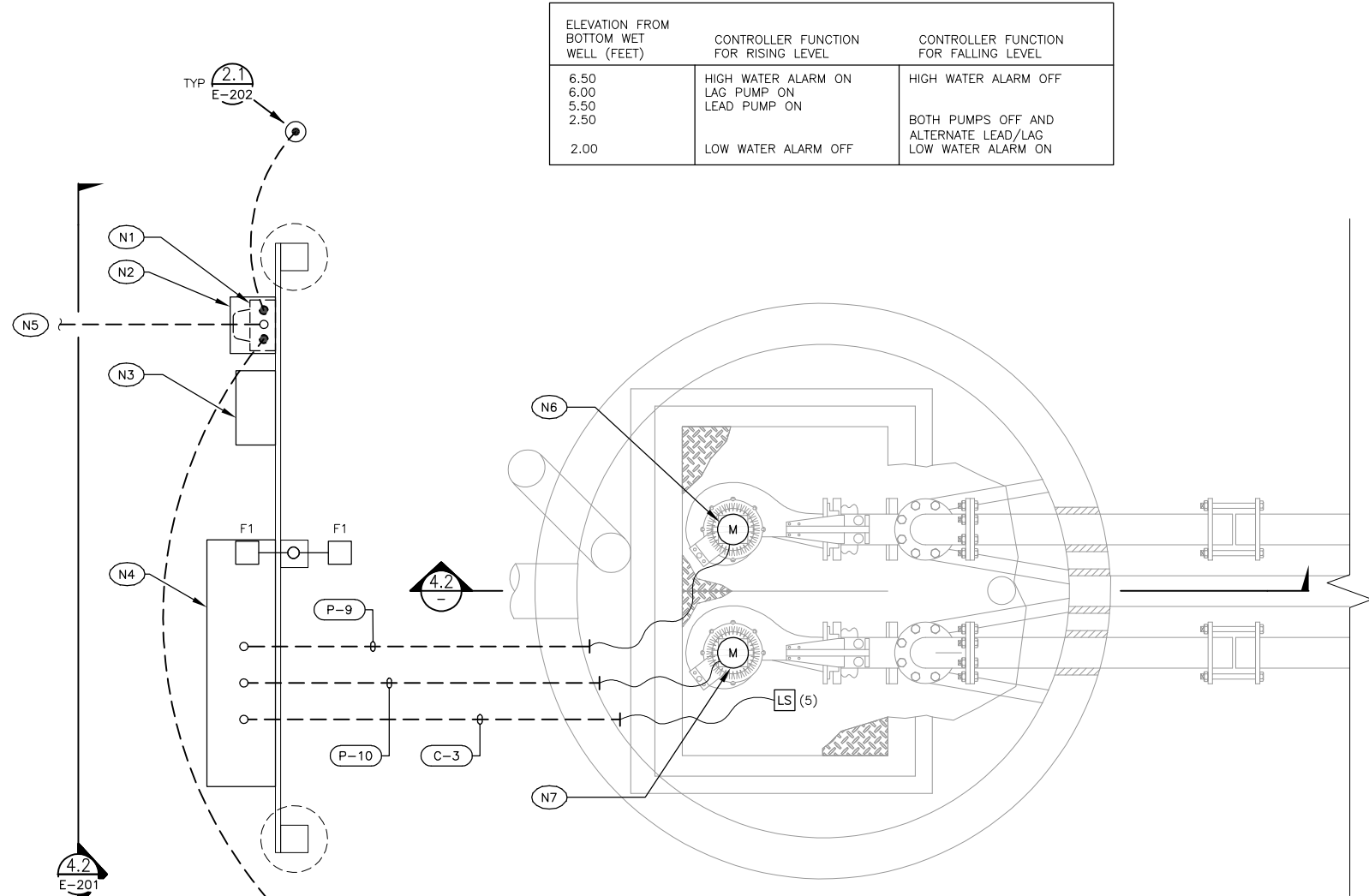
REVISION		DATE
NO.	DESCRIPTION	BY

Plot Date: 6/5/2019 3:55 PM Plotted By: Teri Schawweder
Date Created: 5/22/2019 3:03 PM M19111-JUB-MILL ROAD STORMWATER PUMP STATION DRAWINGS M1911-E-101.DWG

4.1

PUMP STATION
POWER AND CONTROL PLAN

SCALE: 1"=1'-0"

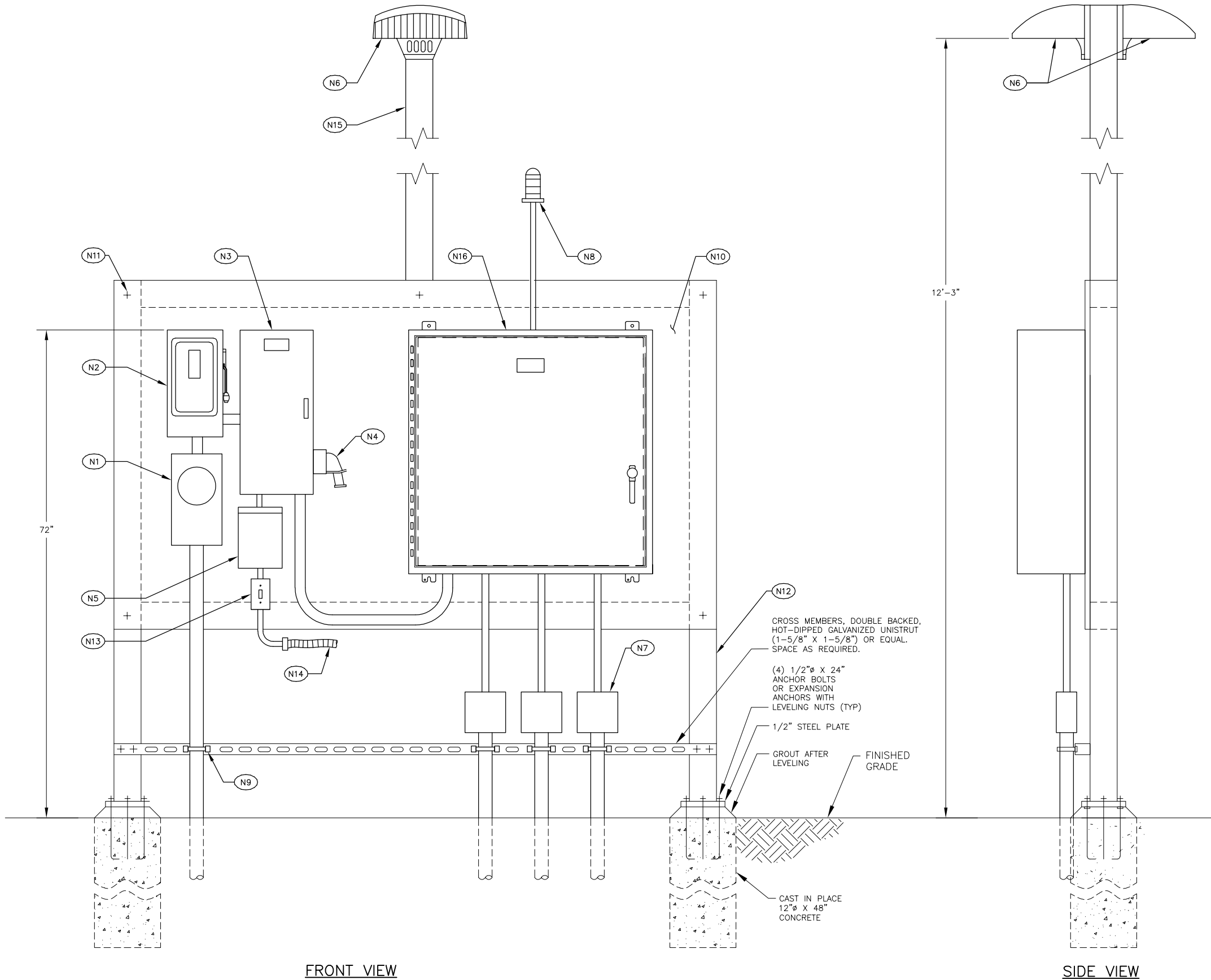


Plot Date: 6/5/2019 11:35 AM Plotted By: Ted Schawander
Date Created: 5/22/2019 3:03 PM M19111-JUB-MILL ROAD STORMWATER PUMP STATION DRAWINGS M1911-E-201.DWG

4.1

ELECTRICAL RACK ELEVATION DETAIL

NOT TO SCALE



NOTES: (for this sheet)

- (N1) NEW UTILITY METER.
- (N2) NEW SERVICE ENTRANCE RATED MAIN BREAKER.
- (N3) MANUAL TRANSFER SWITCH.
- (N4) GENERATOR RECEPTACLE.
- (N5) UN-METERED DUPLEX RECEPTACLE POWER OUTLET BOX. MIDWEST ELECTRIC #U011C010.
- (N6) FIXTURE TYPE "F1".
- (N7) NEMA 4X, JUNCTION BOX (3 PLACES).
- (N8) ALARM BEACON "F2", RED, ROTATING PARABOLIC REFLECTOR, NEMA 4X, 120VAC, PIPE MOUNT.
- (N9) CONDUIT STRAP. STAINLESS STEEL, TYPICAL.
- (N10) EPOXY COATED SHEET STEEL (3/16" THICK) OR EQUAL. SIZE AS REQUIRED.
- (N11) ALL FASTENING HARDWARE SHALL BE STAINLESS STEEL. HARDWARE SHALL BE FLUSH MOUNTED.
- (N12) UPRIGHTS, HOT-DIPPED GALVANIZED POSTS (4" X 4" X 1/4"), OR EQUAL. ALL CONNECTION HARDWARE SHALL BE STAINLESS STEEL.
- (N13) LIGHT SWITCH, 20A, 120V, WEATHERPROOF COVER.
- (N14) CONTINUE TO FIXTURE "F1".
- (N15) LUMINAIRE POLE, (4' X 4' X 1/8") HOT-DIPPED, GALVANIZED FIXTURE POLE. LENGTH AS REQUIRED.
- (N16) LIFT STATION CONTROL PANEL.

REUSE OF DRAWINGS
J-U-B SHALL RETAIN ALL COMMON LAW, STATUTORY, COPYRIGHT AND OTHER RIGHTS IN THIS DESIGN. NO PART OF THIS DESIGN SHALL BE REPRODUCED OR TRANSMITTED IN ANY FORM OR BY ANY MEANS, WITHOUT WRITTEN CONSENT BY J-U-B. ANY REUSE WITHOUT WRITTEN CONSENT BY J-U-B WILL BE AT CLIENT'S SOLE RISK AND WITHOUT LIABILITY OR LEGAL EXPOSURE TO J-U-B.

MILL ROAD STORMWATER PUMP STATION REHABILITATION
CITY OF LEWISTON

FILE : M19111-E-201
JUB PROJ. # : 21-18-028
DRAWN BY: TLS
DESIGN BY: SRJ
CHECKED BY: RJW
AT FULL SIZE, IF NOT ONE
INCH, SCALE ACCORDINGLY
LAST UPDATED: 6/5/2019
SHEET NUMBER:
E-201

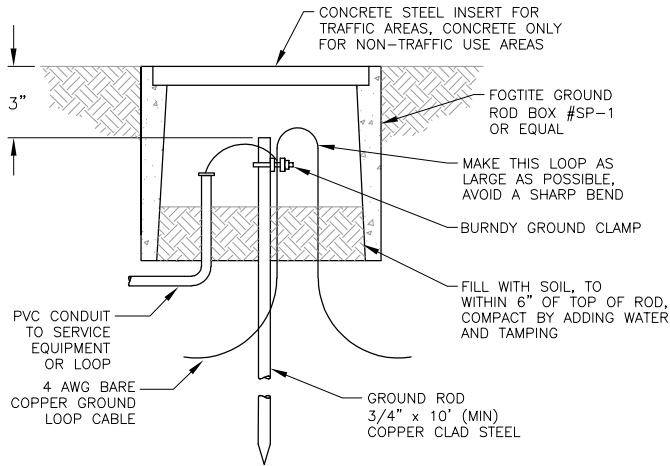
1038 W. Davison Avenue
Coeur d'Alene, ID 83814
Main Office
(208) 666-4021 Fax
AEI **Engineering** **Incorporated**

JUB
J-U-B ENGINEERS, INC.
201 South Jackson Street
Moscow, ID 83843
Phone: 208.748.9010
www.jub.com

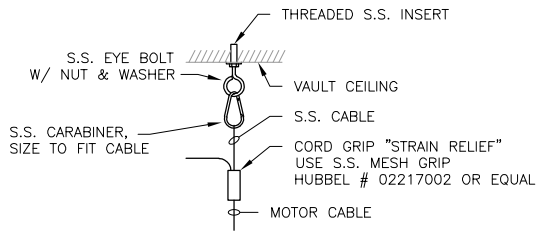
PROFESSIONAL ENGINEER
REGISTERED
DRAFT
STATE OF IDAHO
SCOTT R. JACOBSON

NO.	REVISION	DESCRIPTION	BY	DATE

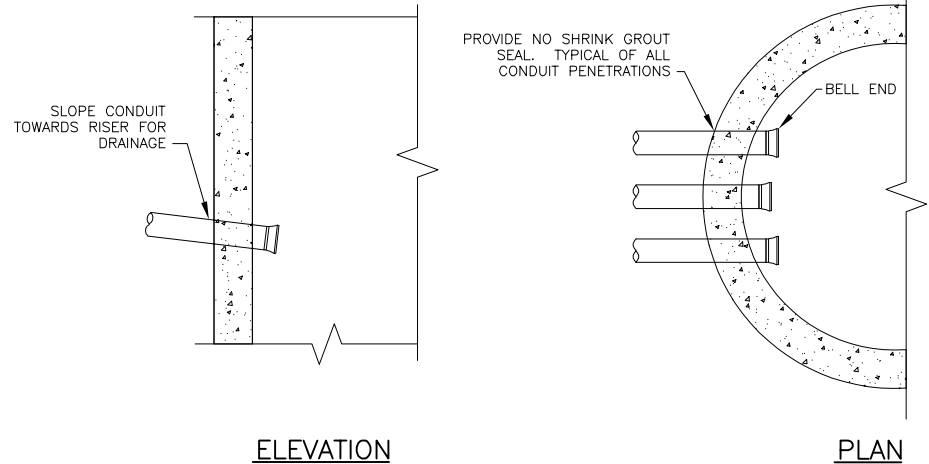
ELECTRICAL DETAILS



2.1 TYPICAL GROUND ROD DETAIL
NOT TO SCALE



2.2 TYPICAL FLOAT CORD
SUPPORT DETAIL
NOT TO SCALE



2.3 WET WELL CONDUIT DETAIL
NOT TO SCALE



NOTES: (for this detail)

- N1 EXISTING ELECTRICAL FEED AND EQUIPMENT TO BE DEMOLISHED.
- N2 EXISTING ELECTRIC METER TO BE DEMOLISHED.

4.1 DEMOLITION PHOTO DETAIL
NOT TO SCALE

4.3 NOT USED
NOT TO SCALE

NO.	REVISION	DESCRIPTION	BY	DATE

MILL ROAD STORMWATER PUMP STATION REHABILITATION
CITY OF LEWISTON
ELECTRICAL DETAILS

FILE : M19111-E-202
JUB PROJ. # : 21-18-028
DRAWN BY: TLS
DESIGN BY: SRJ
CHECKED BY: RJW
AT FULL SIZE, IF NOT ONE
INCH, SCALE ACCORDINGLY
LAST UPDATED: 6/5/2019
SHEET NUMBER:
E-202