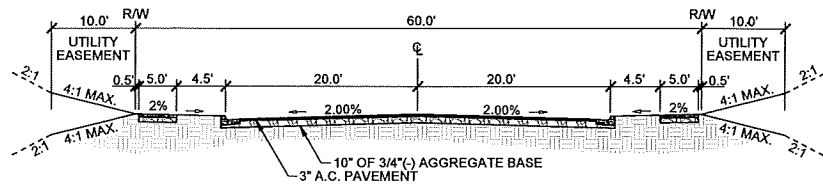


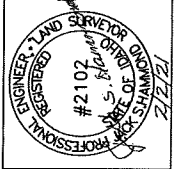
TYPICAL LOCAL RESIDENTIAL STREET
 STD DWG 3-4
 (CANYON CREST WAY)



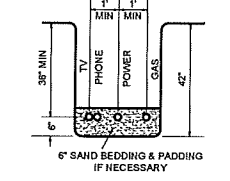
RESIDENTIAL COLLECTOR
 *MODIFIED STD. DWG. NO. 3-9
 (18TH STREET)

- NOTES:**
- ALL EARTHWORK SHALL BE COMPACTED TO 95% OF AASHTO T-99 PROCTOR VALUE
 - ALL POTABLE WATER LINES RUNNING FROM MAIN TO METERS WILL BE 1" AND METERS WILL BE 3/4" TYP.
 - SANITARY SEWERS SHALL HAVE 3' MIN. COVER & SERVICE LATERALS SHALL HAVE 2' MIN. GRADE. STORM DRAINS SHALL HAVE 2' MIN. COVER
 - ALL WORK DONE WITHIN CITY RIGHT OF WAY TO BE DONE IN ACCORDANCE WITH CITY STANDARDS
 - WATER MAIN PIPING, VALVES, FIRE HYDRANTS AND WATER METERS SHALL BE FURNISHED AND INSTALLED IN ACCORDANCE WITH L.O.I.D. STANDARDS
 - SANITARY SEWER PIPING AND MANHOLES SHALL BE FURNISHED AND INSTALLED IN ACCORDANCE WITH CITY OF LEWISTON STANDARDS
 - CITY OF LEWISTON IS RESPONSIBLE FOR SANITARY SEWER INSPECTION
 - ALL AVISTA CONDUITS WILL BE SCHEDULE 40 GRAY ELECTRICAL CONDUIT (LARGE SWEEPS, LONG COUPLERS)
 - A RIGHT-OF-WAY PERMIT SHALL BE OBTAINED THROUGH THE PUBLIC WORKS DEPARTMENT PRIOR TO ANY WORK WITHIN PUBLIC RIGHT-OF-WAY.
 - THE CONTRACTOR SHALL BE RESPONSIBLE FOR PROTECTING ALL UNDERGROUND UTILITIES AT ALL TIMES DURING CONSTRUCTION. THE CONTRACTOR SHALL BE RESPONSIBLE FOR REPAIRING ALL DAMAGES AT NO ADDITIONAL COST TO THE OWNER. THE LOCATIONS OF UNDERGROUND UTILITIES SHOWN ON THE PROJECT DRAWINGS ARE APPROXIMATE AND BASED ON EXISTING RECORDS AND FIELD SURVEYS. THE NUMBERS AND LOCATIONS OF ALL UNDERGROUND UTILITIES SHOWN ARE FOR INFORMATIONAL PURPOSES ONLY. FOR YOUR SAFETY, STATE LAW REQUIRES THAT THE CONTRACTOR SHALL CALL 811 "CALL BEFORE YOU DIG" FOR UTILITY FIELD LOCATIONS PRIOR TO COMMENCING EXCAVATION ON SITE. THE CONTRACTOR SHALL COORDINATE ALL WORK WITH THE RELEVANT UTILITY COMPANIES
 - SITE DISTANCES FOR ADJUTING PROPERTIES, DRIVEWAYS AND INTERSECTIONS SHALL BE MAINTAINED
 - ALL CONSTRUCTION NOT SPECIFICALLY MENTIONED OR SHOWN SHALL CONFORM TO CITY ORDINANCES AND STANDARDS AND L.O.I.D. STANDARD DRAWINGS & TECHNICAL SPECS.
 - A SWPPP & NOI IS REQUIRED FOR THIS PROJECT. THE CONTRACTOR SHALL REFERENCE THE STORMWATER POLLUTION PREVENTION MANUAL (SWPPP) FOR ALL EROSION CONTROL PROCEDURES ON SITE
 - L.O.I.D. IS RESPONSIBLE FOR WATERMAIN INSPECTION
 - ALL UNDERGROUND UTILITIES MUST BE CONSTRUCTED AND APPROVED PER EACH UTILITY PROVIDER (INCLUDING VIDEO IF REQUIRED) PRIOR TO PAVING.
 - ALL PAVING BASE MATERIAL MUST BE INSPECTED AND APPROVED AT LEAST 24 HOURS IN ADVANCE OF PAVING. INCLUDING DENSITY TESTING AND GRADE CHECKS.
 - CITY INSPECTION REQUIRES 24 HOUR NOTICE

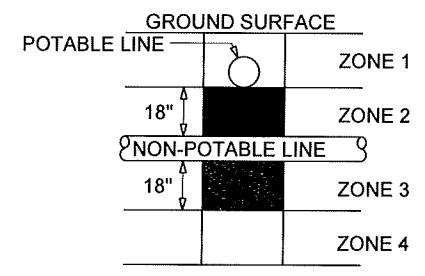
REV. NO.	DATE	DESCRIPTION	CHECKED	APPD.



FRANCHISE UTILITIES TRENCH DETAIL

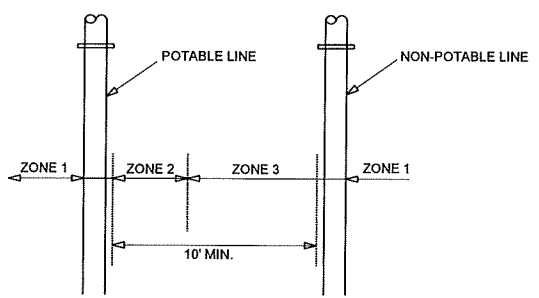


LINE CROSSINGS



- ZONE 1:**
 A) Potable Water and Non-potable Mains and Service Lines must be separated by at least 18 inches and
 B) One full, uncut length of Non-Potable pipe must be centered so that the joints are as far as possible from the crossing.
ZONE 2: Potable line <18" over the top of Non-Potable line (Main and Services).
 A) One full, uncut length of Non-Potable Water pipe must be centered on the crossing so that the joints are as far as possible from the Non-Potable line and either B)
 Non-Potable line must be constructed to Potable water pipe standards and pressure tested for water tightness for a horizontal distance of 10 feet on both sides of crossing,
 or C)
 Non-Potable or potable line must be cased in a larger diameter carrier pipe for a horizontal distance of 10 feet on both sides of the crossing, with no joints.
ZONE 3: Same requirements as Zone 2 except the Non-Potable line must also be supported above the crossing to prevent settling.
ZONE 4: Same requirements as Zone 1 except the Non-potable line must also be supported above the crossing to prevent settling.

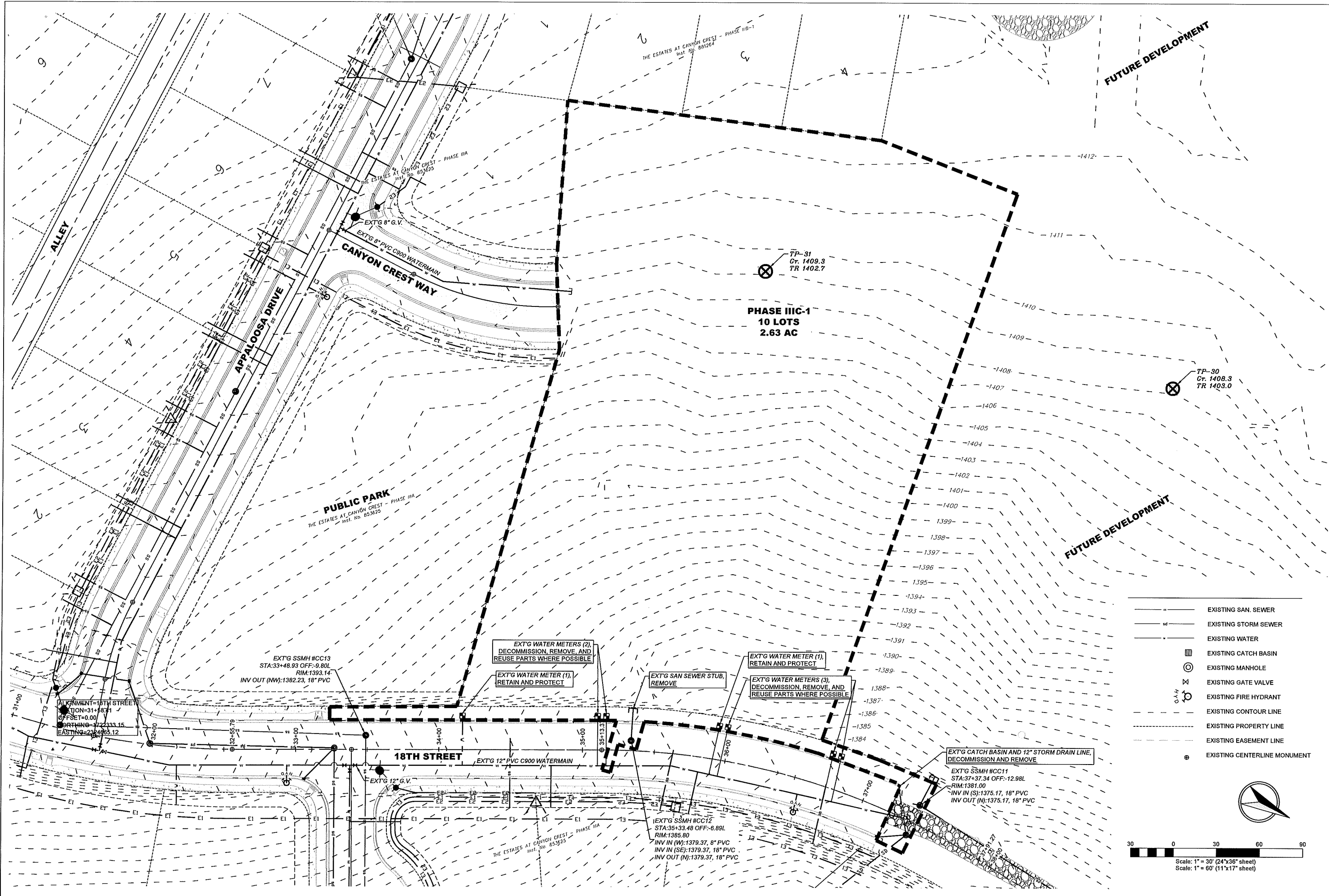
LINE SEPARATIONS



- ZONE 1: (MORE THAN 10 FEET APART)**
ZONE 2: (FROM 6 TO 10 FEET APART)
 * Potable and Non-Potable mains separated by at least 6 feet at outside walls and
 * Potable main higher in elevation than Non-Potable mains and
 * Non-Potable mains constructed to with Potable water class pipe and pressure tested for water-tightness.
Zone 3: (CLOSER THAN 6 FEET APART)
 * For Mains and Services, Design Engineer to submit data to Department for review and approval that this intualiation will protect public health and environment and non-potable line constructed with potable water class pipe.

**THE ESTATES AT CANYON CREST
 PHASE IIIC-1
 NOTES & DETAILS
 RPL DEVELOPMENT, LLC
 LEWISTON, IDAHO**





FUTURE DEVELOPMENT

FUTURE DEVELOPMENT

PHASE III C-1
10 LOTS
2.63 AC

PUBLIC PARK
THE ESTATES AT CANYON CREST - PHASE IIIA
REF. NO. B53625

THE ESTATES AT CANYON CREST - PHASE IIB-1
REF. NO. B01264

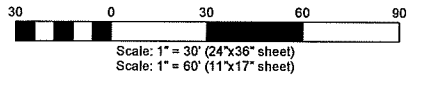
18TH STREET

ALLEY

APPALOOSA DRIVE

CANYON CREST WAY

- EXISTING SAN. SEWER
- EXISTING STORM SEWER
- EXISTING WATER
- ▣ EXISTING CATCH BASIN
- ⊙ EXISTING MANHOLE
- ⊗ EXISTING GATE VALVE
- ⊕ EXISTING FIRE HYDRANT
- - - EXISTING CONTOUR LINE
- - - EXISTING PROPERTY LINE
- - - EXISTING EASEMENT LINE
- ⊕ EXISTING CENTERLINE MONUMENT



THE ESTATES AT CANYON CREST
PHASE III C-1
EXISTING SITE PLAN
RPL DEVELOPMENT, LLC
LEWISTON, IDAHO

REVISION
DESCRIPTION
DATE
LTD.

SHEET SIZE
D

CHECKED BY
JSH

DATE
02-02-21

SHEET
C2

DRAWING #
2022-C2

SCALE
1"=30'

DRAWN BY
MEE

DATE
02-02-21

SHEET
C2

DRAWING #
2022-C2

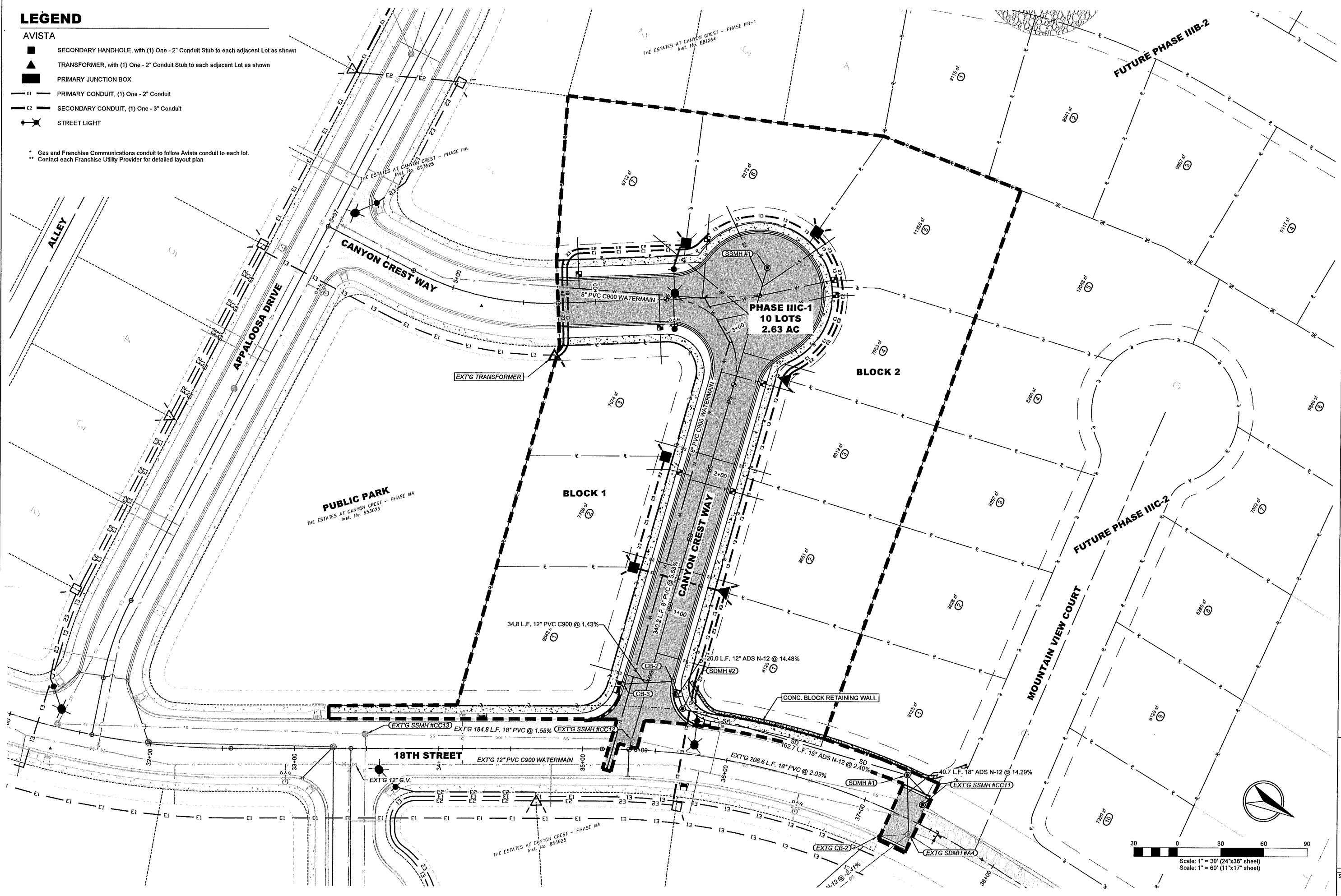
HAMMOND ENGINEERING & DEVELOPMENT CO.
23020 Penny Lane, Juntura, Idaho 83355
(208) 843-9503

SHEET

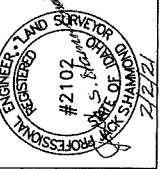
C2

LEGEND

- AVISTA**
- SECONDARY HANDHOLE, with (1) One - 2" Conduit Stub to each adjacent Lot as shown
 - ▲ TRANSFORMER, with (1) One - 2" Conduit Stub to each adjacent Lot as shown
 - PRIMARY JUNCTION BOX
 - E1 — PRIMARY CONDUIT, (1) One - 2" Conduit
 - E2 — SECONDARY CONDUIT, (1) One - 3" Conduit
 - ☼ STREET LIGHT
- Gas and Franchise Communications conduit to follow Avista conduit to each lot.
 •• Contact each Franchise Utility Provider for detailed layout plan

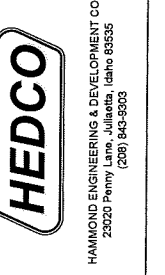


REV. DATE	DESCRIPTION	CHECKED	APPR.

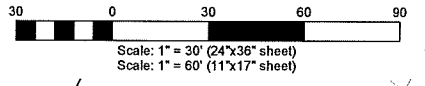


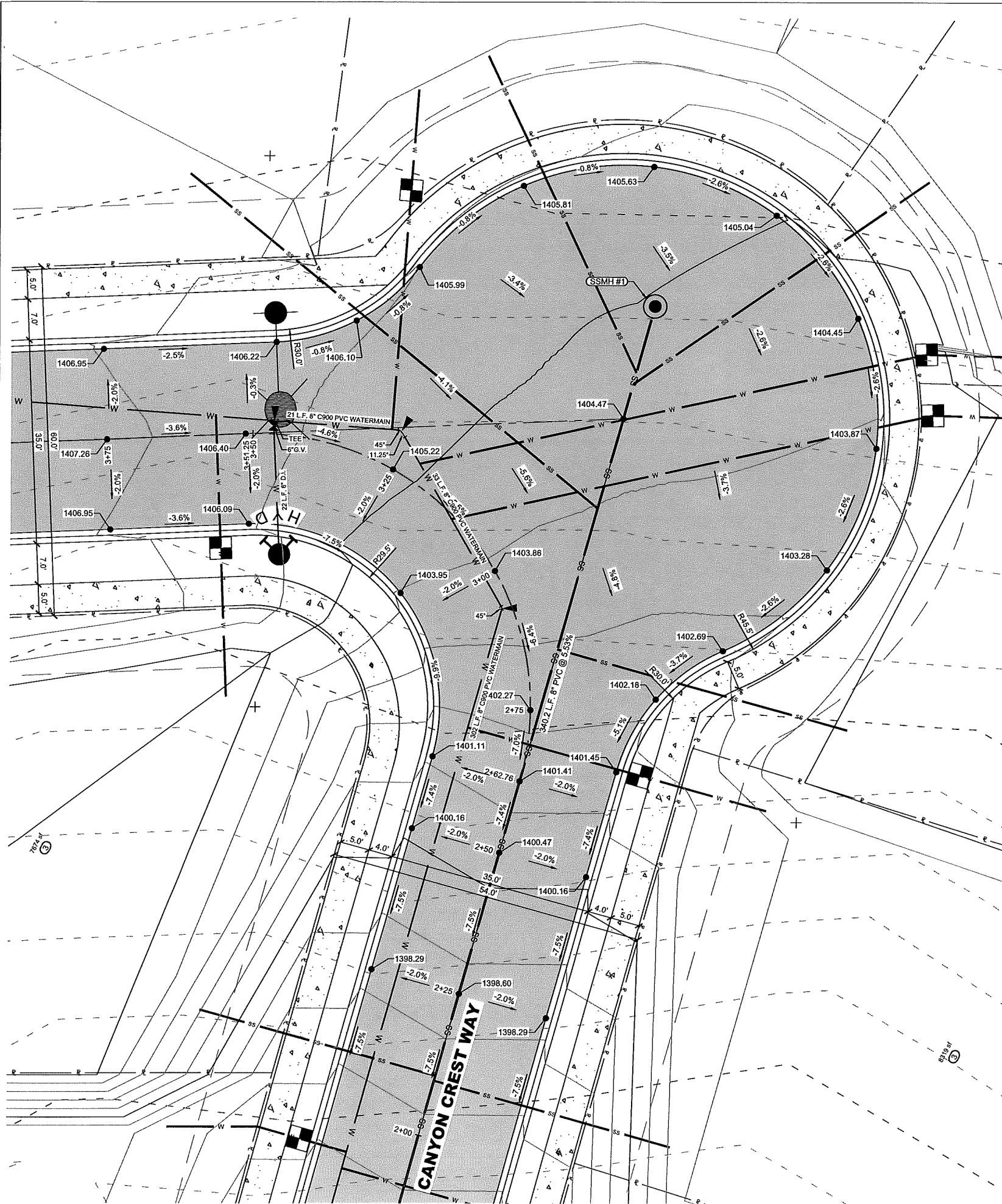
SCALE	1"=30'
SHEET SIZE	D
DRAWN BY	NIEE
CHECKED BY	JSH
DATE	02-02-21
PROJECT	2022
SHEET	C5
DRAWING #	2022-C5

**THE ESTATES AT CANYON CREST
 PHASE III C-1
 FRANCHISE UTILITIES PLAN - AVISTA
 RPL DEVELOPMENT, LLC
 LEWISTON, IDAHO**

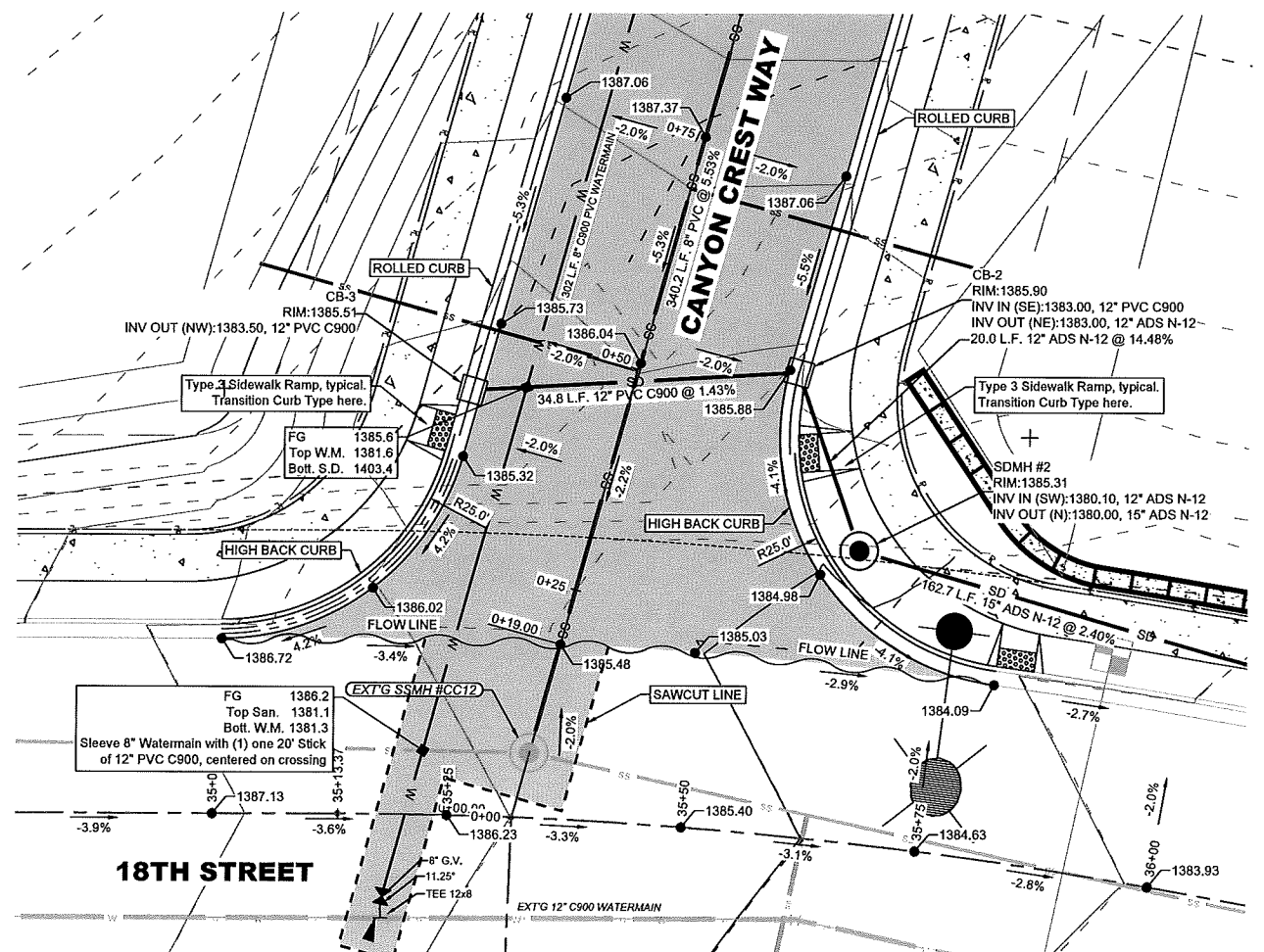
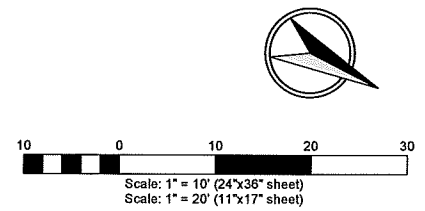
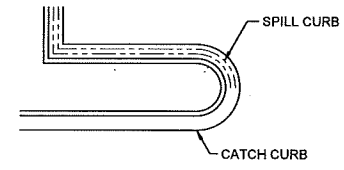


SHEET **C5**





- NOTES:**
1. ALL SIGNING AND STRIPING SHALL CONFORM TO THE MANUAL ON UNIFORM TRAFFIC CONTROL DEVICES, (MUTCD) AND BE AT THE DIRECTION OF THE CITY OF LEWISTON, PUBLIC WORKS DEPARTMENT
 2. OPEN FACE (SPILL CURB) GUTTER SHALL BE CONSTRUCTED WHERE DRAINAGE IS DIRECTED AWAY FROM CURB.
 3. TRANSITIONS FROM OPEN FACE TO STANDARD CURB AND GUTTER ARE TO BE SMOOTH. HAND FORM THESE AREAS IF NECESSARY.
 4. OPEN FACE GUTTER LOCATIONS ARE INDICATED BY SHADING AND NOTES ON THE GRADING PLAN.



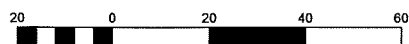
THE ESTATES AT CANYON CREST - PHASE IIIC-1
SINTERSECTION DETAILS
RPL DEVELOPMENT, LLC
LEWISTON, IDAHO

HEDCO
 HAMMOND ENGINEERING & DEVELOPMENT CO.
 23020 Perry Lane, Juliaetta, Idaho 83455
 (208) 843-9303

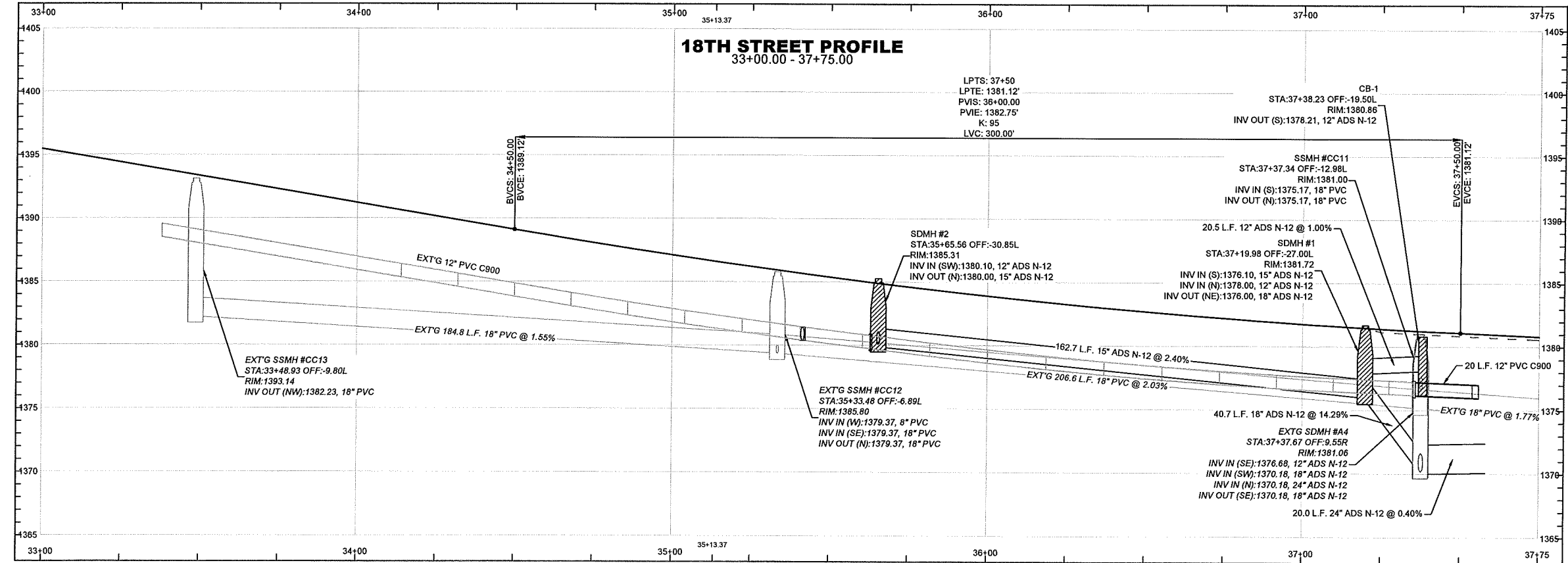
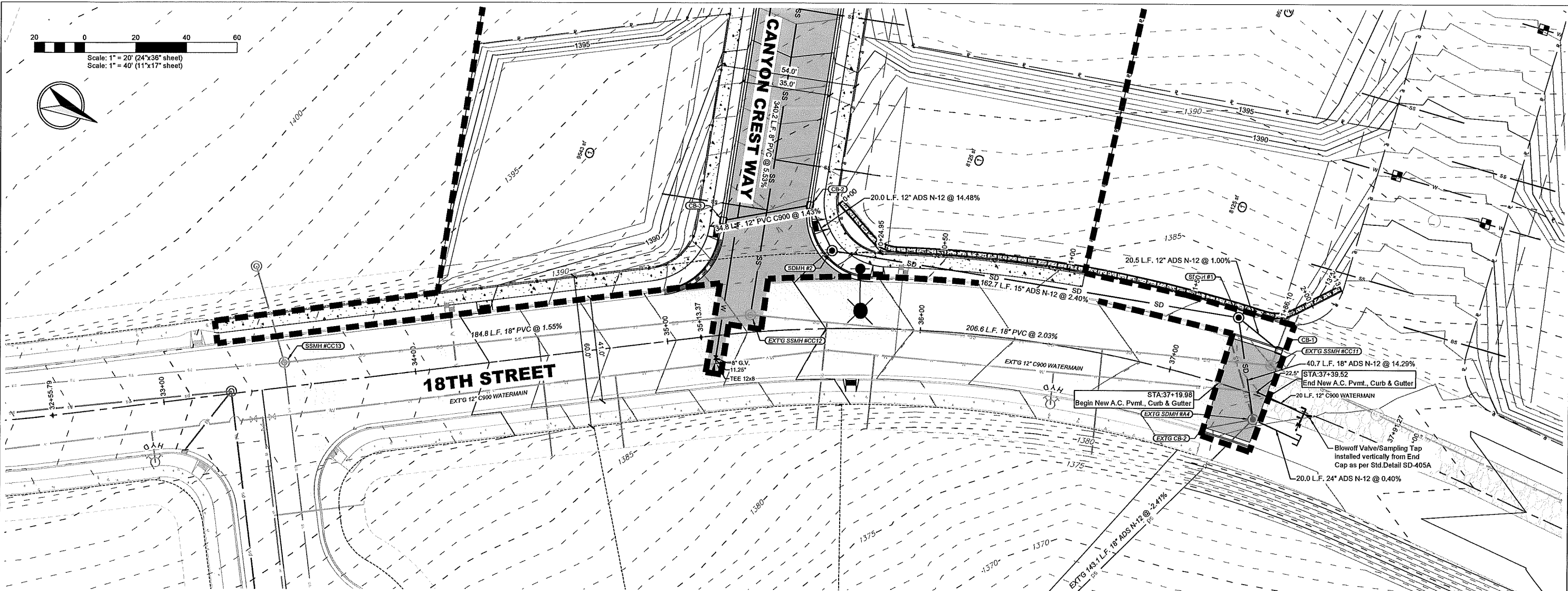
REVISION	DESCRIPTION	CHECKED	APPD.

SCALE: 1"=10' (24"x36" sheet)
 SCALE: 1"=20' (11"x17" sheet)

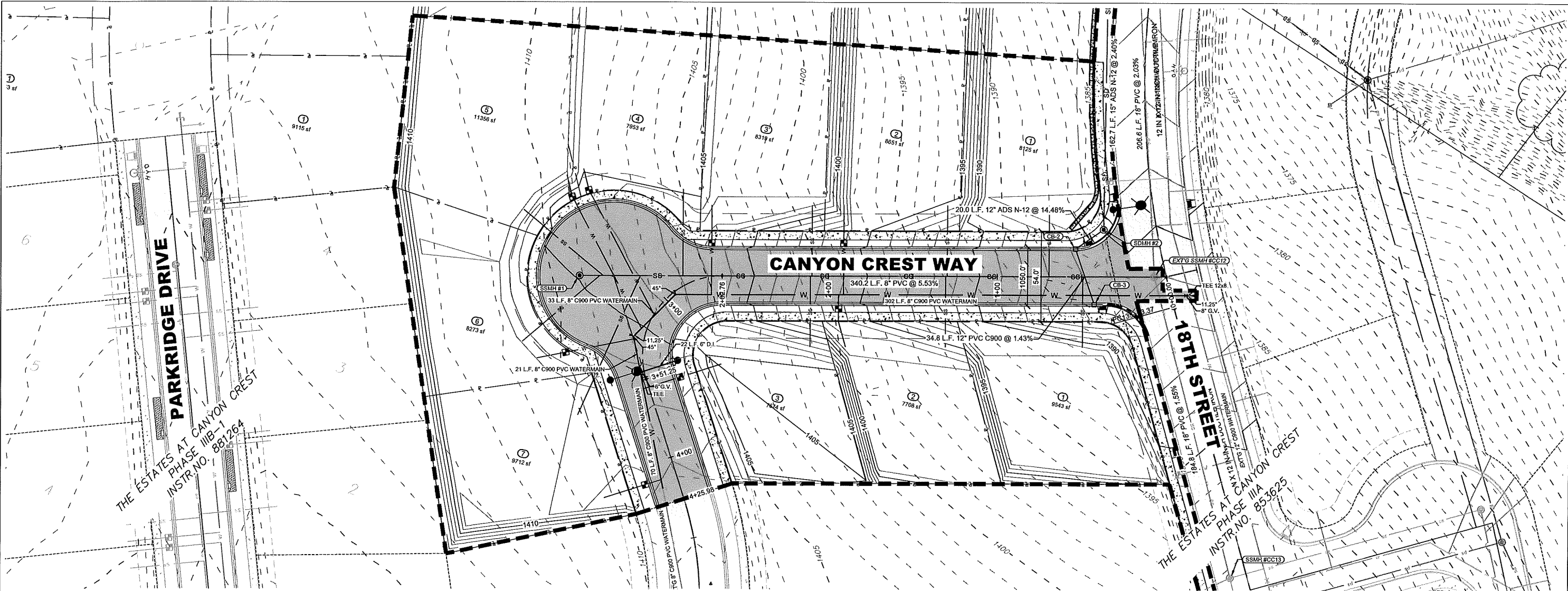
SHEET: **C6**



Scale: 1" = 20' (24"x36" sheet)
 Scale: 1" = 40' (11"x17" sheet)

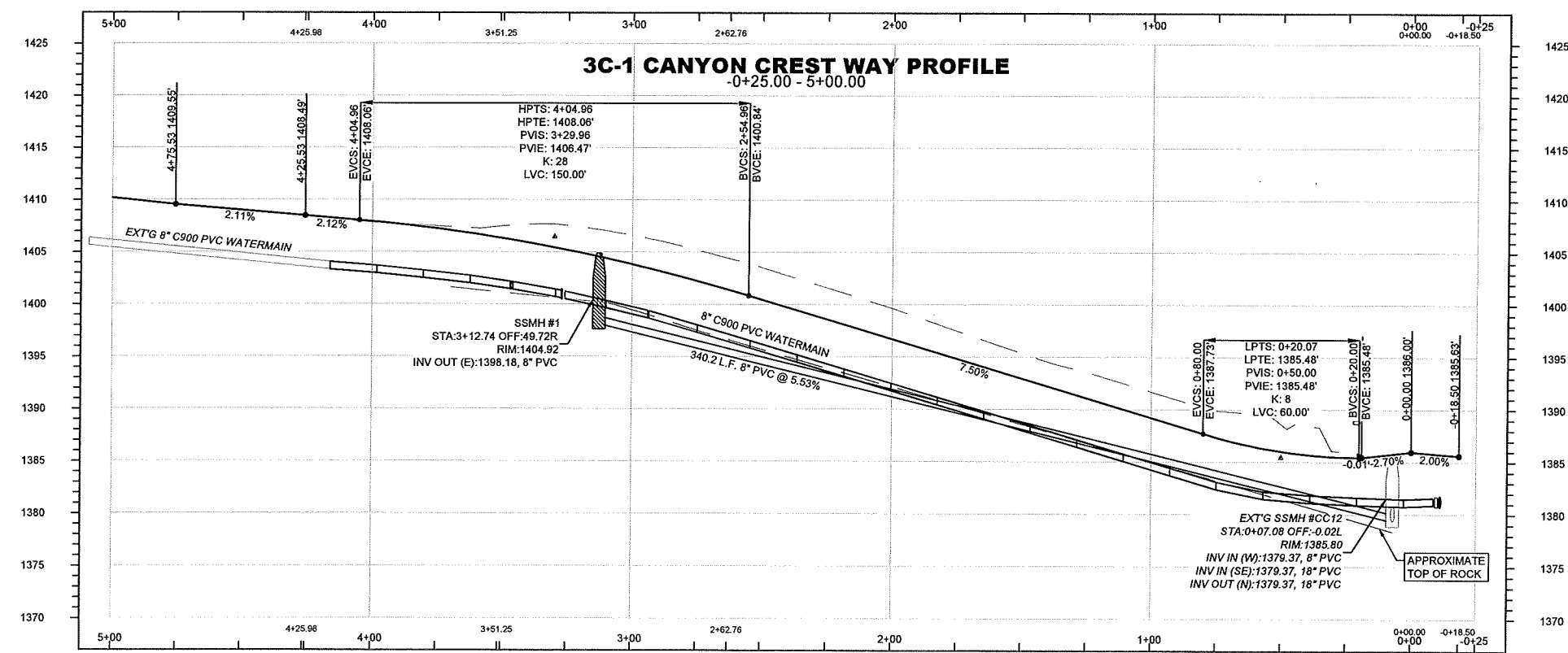
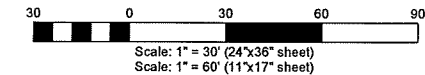


	REVISION DESCRIPTION DATE LTR	SHEET SIZE D	CHECKED BY JSH	DRAWN BY MEE	DATE 02-02-21	JOB # 2022	SHEET C7	DRAWING # 2022-C7
THE ESTATES AT CANYON CREST PHASE IIIC-1 18TH STREET PLAN & PROFILE RPL DEVELOPMENT, LLC LEWISTON, IDAHO								
<small>HAMMOND ENGINEERING & DEVELOPMENT CO. 23020 Penny Lane, Jullianta, Idaho 83535 (208) 843-9303</small>								
SHEET C7								



THE ESTATES AT CANYON CREST
 PHASE IIIIB-1
 INSTR. NO. 881264

THE ESTATES AT CANYON CREST
 PHASE IIIA
 INSTR. NO. 853625



REVISION	DESCRIPTION	CHECKED	APPD.
REV. DATE			
LTR			

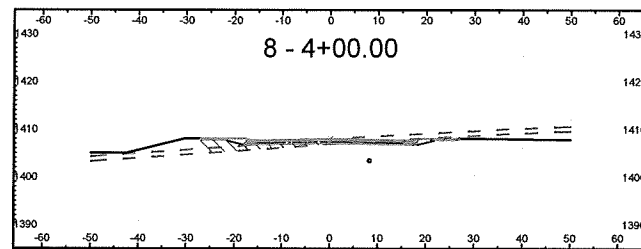
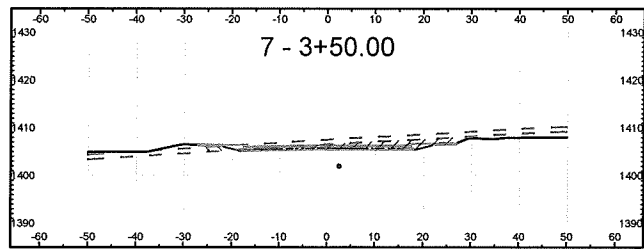
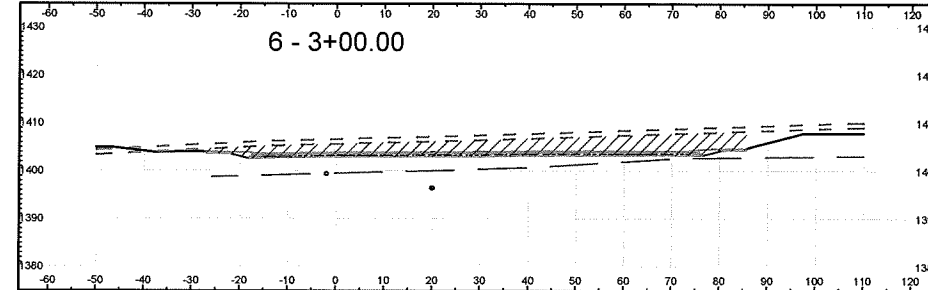
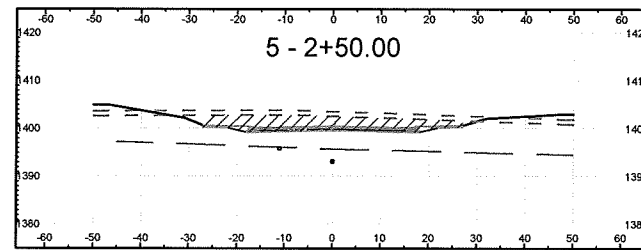
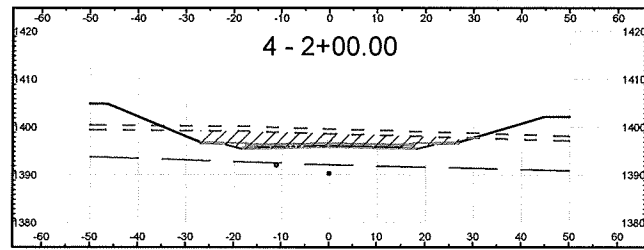
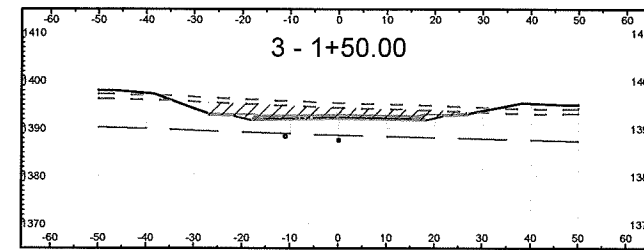
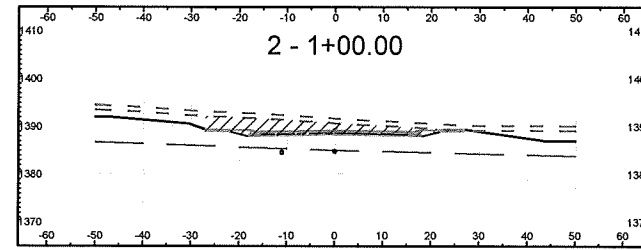
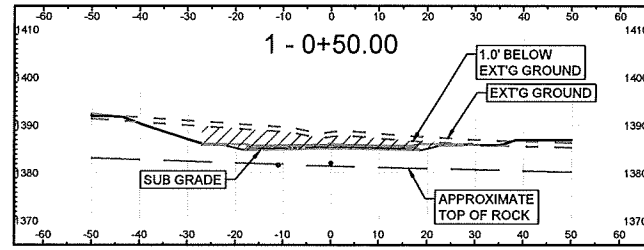
PROFESSIONAL ENGINEER - LAND SURVEYOR OF IDAHO
 #2107
 J. S. HARRIS
 2/2/21

SHEET SIZE	D
SCALE	1"=30'
DRAWN BY	NIE
CHECKED BY	JSH
DATE	02-02-21
JOB #	2022
SHEET	C8
DRAWING #	2022-C8

THE ESTATES AT CANYON CREST PHASE IIIIC-1
CANYON CREST WAY PLAN & PROFILE
RPL DEVELOPMENT, LLC
LEWISTON, IDAHO

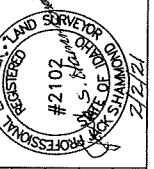
HEDCO
 HAMMOND ENGINEERING & DEVELOPMENT CO.
 23020 Penny Lane, Jullietta, Idaho 83535
 (208) 843-5003

SHEET **C8**



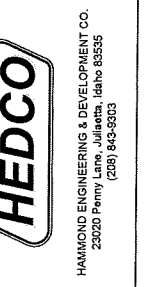
Total Volume Table						
Station	Fill Area	Cut Area	Fill Volume	Cut Volume	Cumulative Fill Vol	Cumulative Cut Vol
0+50.00	0.00	148.00	0.00	0.00	0.00	0.00
1+00.00	0.00	128.94	0.00	256.42	0.00	256.42
1+50.00	0.00	126.37	0.00	236.40	0.00	492.82
2+00.00	0.00	151.19	0.00	257.00	0.00	749.82
2+50.00	0.00	153.91	0.00	282.51	0.00	1032.33
3+00.00	0.00	370.54	0.00	682.04	0.00	1714.37
3+50.00	7.12	55.16	3.23	673.96	3.23	2388.33
4+00.00	33.78	16.69	37.47	66.91	40.71	2455.24

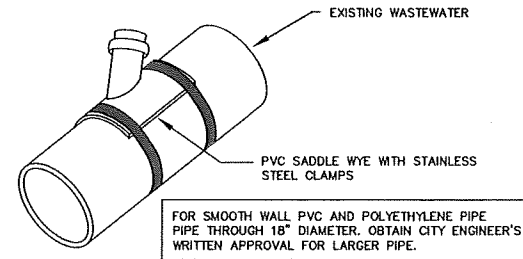
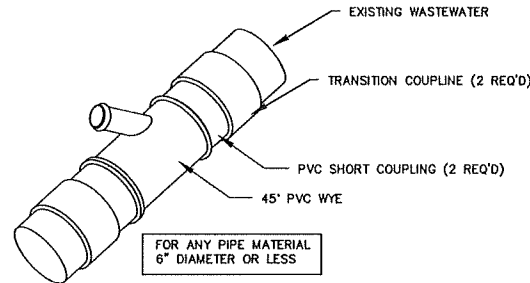
REV. LTR.	DATE	DESCRIPTION	CHECKED	APPD.



SCALE	1"=20'
SHEET SIZE	D
DRAWN BY	MEE
CHECKED BY	ISH
DATE	02-02-21
JOB #	2022
SHEET	C9
DRAWING #	2022-C9

THE ESTATES AT CANYON CREST PHASE IIIC-1
CANYON CREST WAY X-SECTIONS
RPL DEVELOPMENT, LLC
LEWISTON, IDAHO

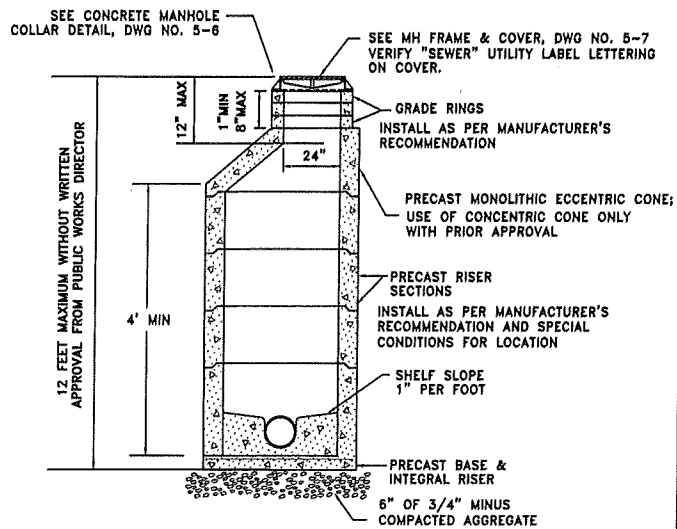




- NOTES:
1. WASTEWATER SERVICE LATERALS SHALL BE CONNECTED TO SANITARY MAIN AT A POINT ABOVE THE HORIZONTAL CENTERLINE OF THE PIPE BUT NOT DIRECTLY TO THE TOP OF THE MAIN.
 2. FOR SANITARY MAIN PIPE OF 6" DIAMETER AND LARGER USE ROMAC STYLE 'CB' WASTEWATER SADDLE.

CITY OF LEWISTON, IDAHO PUBLIC WORKS DEPARTMENT	
WASTEWATER SERVICE TAP OPTIONS DETAIL	
APPROVED FOR PUBLICATION <i>Shawn Stiller</i> 12/15/20 City Engineer Date	DWG. NO. 5-2

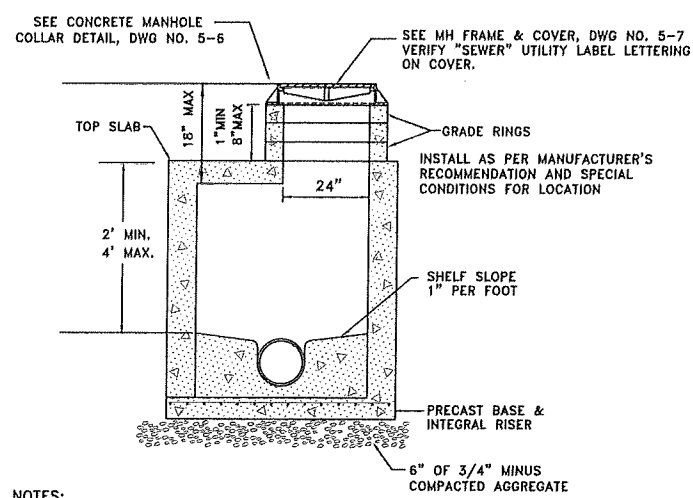
Standards\2010-Standards\5-SanitarySewer\WasteWater Tap Options.dwg



- NOTES:
1. ALL UNITS TO MEET OR EXCEED THE REQUIREMENTS OF ASTM C478/AASHTO M199. JOINTS SHALL BE RUBBER GASKET CONFORMING TO ASTM C443 AND SHALL BE GROUDED FROM THE INSIDE. LIFT HOLES SHALL BE GROUDED FROM THE OUTSIDE AND INSIDE OF THE MANHOLE.
 2. PRECAST BASES SHALL BE FURNISHED WITH CUTOUTS OR KNOCKOUTS. KNOCKOUTS SHALL HAVE A WALL THICKNESS OF 2" MINIMUM.
 3. CONNECTION TO MANHOLE SHALL BE MADE USING RESILIENT CONNECTOR CONFORMING TO ASTM C-923 SUCH AS KOR-N-SEAL, A-LOK OR APPROVED EQUAL.
 4. RISERS, UNIT SECTIONS AND THE FRAME SHALL NOT BE MORE THAN ONE INCH OUT OF ALIGNMENT WITH THE MANHOLE BASE; PIPES SHALL BE FLUSH WITH INSIDE EDGE OF MANHOLE.
 5. PRESSURE TESTING IS REQUIRED FOR ALL INSTALLATIONS.
 6. SEE DWG NO 5-6 FOR CONCRETE MANHOLE COLLAR.
 7. MAXIMUM SPACING BETWEEN MANHOLES IS 400 FEET.

CITY OF LEWISTON, IDAHO PUBLIC WORKS DEPARTMENT	
WASTEWATER TYPE 1 MANHOLE	
APPROVED FOR PUBLICATION <i>Shawn Stiller</i> 11/21/20 City Engineer Date	DWG. NO. 5-3

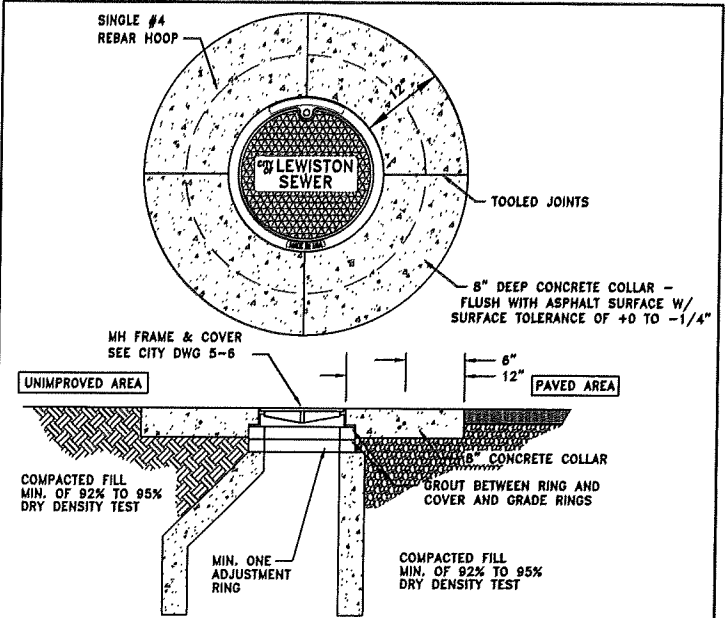
Standards Dwg - City\Current\Std\5-SanitarySewer\SS MH Type 1.dwg



- NOTES:
1. INSTALLATION OF FLAT TOP SLABS MUST HAVE WRITTEN APPROVAL FROM CITY ENGINEER.
 2. ALL UNITS TO MEET OR EXCEED THE REQUIREMENTS OF ASTM C478/AASHTO M199. JOINTS SHALL BE RUBBER GASKET CONFORMING TO ASTM C443 AND SHALL BE GROUDED FROM THE INSIDE. LIFT HOLES BE GROUDED FROM THE OUTSIDE AND INSIDE OF THE MANHOLE.
 3. PRECAST BASES SHALL BE FURNISHED WITH CUTOUTS OR KNOCKOUTS. KNOCKOUTS SHALL HAVE A WALL THICKNESS OF 2" MINIMUM.
 4. CONNECTION TO MANHOLE SHALL BE MADE USING RESILIENT CONNECTOR CONFORMING TO ASTM C-923 SUCH AS KOR-N-SEAL, A-LOK OR APPROVED EQUAL.
 5. RISERS, UNIT SECTIONS AND THE FRAME SHALL NOT BE MORE THAN ONE INCH OUT OF ALIGNMENT WITH THE MANHOLE BASE; PIPES SHALL BE FLUSH WITH INSIDE EDGE OF MANHOLE.
 6. PRESSURE TESTING IS REQUIRED FOR ALL INSTALLATIONS.
 7. SEE DWG NO 5-6 FOR CONCRETE MANHOLE COLLAR.

CITY OF LEWISTON, IDAHO PUBLIC WORKS DEPARTMENT	
WASTEWATER TYPE 1A MANHOLE (SHALLOW MANHOLE)	
APPROVED FOR PUBLICATION <i>Shawn Stiller</i> 11/21/20 City Engineer Date	DWG. NO. 5-4

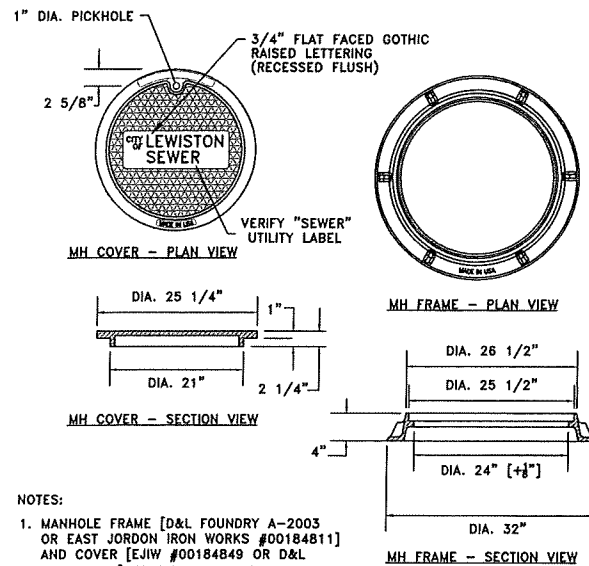
Standards\2010-Standards\5-SanitarySewer\SS Shallow MH.dwg



- NOTES:
1. A CIRCULAR-SHAPED CONCRETE COLLAR IS REQUIRED ON ALL INSTALLATIONS; IN BOTH PAVED OR UNIMPROVED AREAS. INSTALL A 8" THICK CONCRETE COLLAR THAT SHALL BE FLUSH WITH THE ASPHALT SURFACE WITH A SURFACE TOLERANCE OF +0 TO -1/4".
 2. CONCRETE SHALL BE 3,000 PSI MIN. AT 28 DAYS. WATER/CEMENT RATIO SHALL BE 0.5, 3" MAX. SLUMP AND 3% TO 6% ENTRAINED AIR WITH ONE #4 REBAR HOOP. FIBER-REINFORCED CONCRETE (ADDED PER MANUFACTURER'S RECOMMENDATIONS) MAY BE USED IN LIEU OF #4 REBAR.
 3. ALL EDGES WILL BE SEALED WITH CSSI OR APPROVED EQUAL; ALL TOP EDGES WILL BE TACKED AND SAND SEALED.
 4. UTILITY FRAMES AND LIDS ARE PREFERRED OUTSIDE OF WHEEL PATH, WHERE POSSIBLE.

CITY OF LEWISTON, IDAHO PUBLIC WORKS DEPARTMENT	
WASTEWATER CONCRETE MANHOLE COLLAR	
APPROVED FOR PUBLICATION <i>Shawn Stiller</i> 11/27/15 City Engineer Date	DWG. NO. 5-8

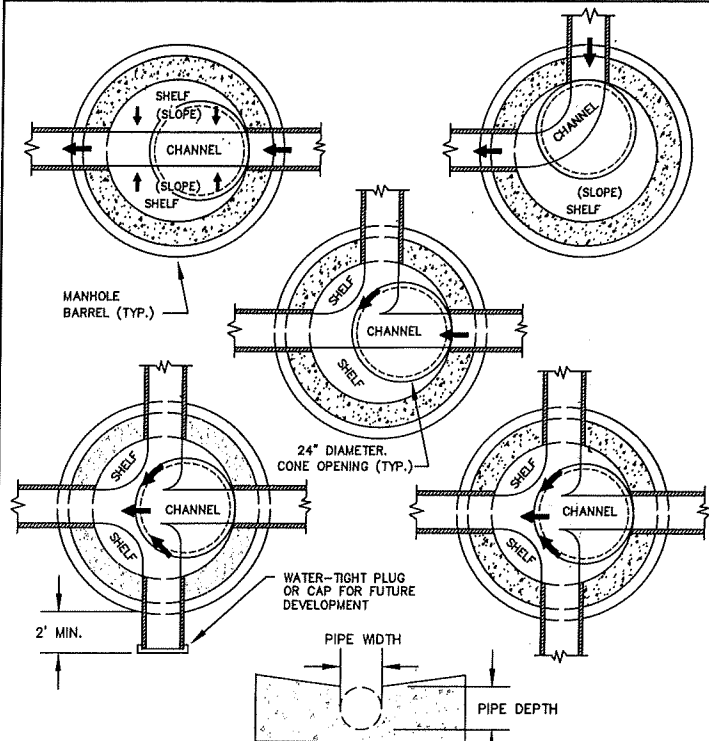
Standards\2010-Standards\5-SanitarySewer\SS MH Collar.dwg



- NOTES:
1. MANHOLE FRAME [D&L FOUNDRY A-2003 OR EAST JORDON IRON WORKS #00184811] AND COVER [EJIW #00184849 OR D&L A-2010-01] OR BY OTHER MANUFACTURER WILL BE ACCEPTABLE ONLY WITH WRITTEN APPROVAL FROM PUBLIC WORKS DEPT.; VERIFY "SEWER" UTILITY LABEL LETTERING ON COVER.
 2. COVER MATERIAL SPECIFICATION GRAY IRON (ASTM A48 CL35B)
 3. IN AREAS OF HIGH STORMWATER INFILTRATION, LIDS SHALL HAVE GASKETED AND BOLTED.

CITY OF LEWISTON, IDAHO PUBLIC WORKS DEPARTMENT	
WASTEWATER MANHOLE FRAME AND COVER	
APPROVED FOR PUBLICATION <i>Shawn Stiller</i> 11/11/20 City Engineer Date	DWG. NO. 5-7

Standards\2010-Standards\5-SanitarySewer\MH Frame_Cover.dwg



- NOTES:
1. SLOPE ALL SHELVES TO CHANNEL AT 1:12.
 2. SEE PLAN & PROFILE SHEETS FOR SLOPE OF CHANNEL.
 3. FOR PIPES OF DIFFERENT SIZES, THE TOP OF PIPE (CROWN) SHALL BE AT THE SAME ELEVATION.
 4. OFFSET CONE 24" DIAMETER OPENING CENTERED OVER UPSTREAM PIPE INVERT.

CITY OF LEWISTON, IDAHO PUBLIC WORKS DEPARTMENT	
WASTEWATER MANHOLE CHANNEL DETAIL	
APPROVED FOR PUBLICATION <i>Shawn Stiller</i> 9-22-15 City Engineer Date	DWG. NO. 5-8

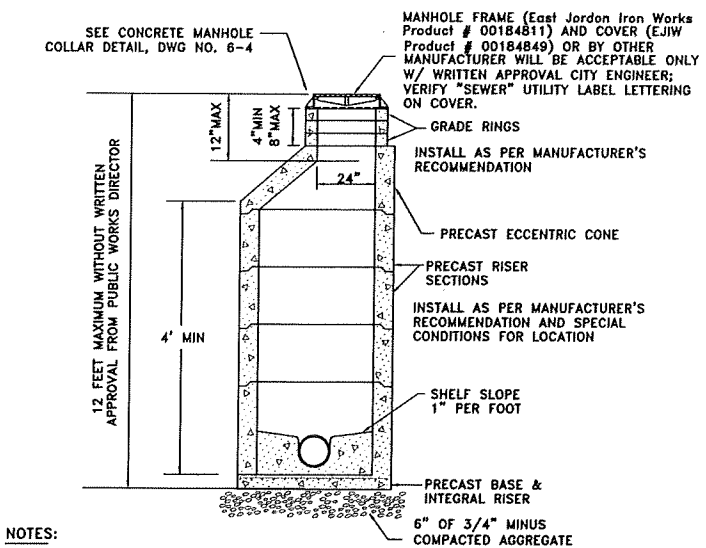
Standards\2010-Standards\5-SanitarySewer\Channel Detail.dwg

GENERAL NOTES FOR STORMWATER SYSTEMS

1. ALL WORK SHALL CONFORM TO CURRENT IDAHO STANDARDS FOR PUBLIC WORKS CONSTRUCTION (ISPC) SPECIFICATIONS AND THE CITY OF LEWISTON STANDARDS AND SPECIFICATIONS. IN THE CASE OF CONFLICT, CITY STANDARDS SHALL PREVAIL. THE 'LEWISTON STORMWATER POLICY AND DESIGN MANUAL' DEFINES THE POLICIES, MINIMUM STANDARDS, REQUIREMENTS, AND PROCEDURES FOR THE DESIGN, CONSTRUCTION, AND MAINTENANCE OF PRIVATE STORMWATER SYSTEMS.
2. ANY REPAIR, MAINTENANCE OR ALTERATION OF A PUBLIC STORM LINE OR DRAINAGE MUST BE APPROVED BY CITY ENGINEER.
3. THE CONTRACTOR MUST SECURE APPROVAL FROM THE CITY ENGINEER PRIOR TO ADDING OR REMOVING FILL BACKFILL OVER PUBLIC STORM DRAIN MAINLINE.
4. THE ENGINEERING INSPECTOR SHALL BE NOTIFIED AT LEAST FORTY-EIGHT (48) HOURS PRIOR TO COMMENCING WORK ON STORM DRAINS.
5. ALL PUBLIC STORM DRAIN LINES SHALL BE VIDEOTAPE AND SUBMITTED TO THE PUBLIC WORKS DEPARTMENT [AS PER PUBLIC WORKS POLICY NO. 2012-2] AND APPROVAL PRIOR TO PAVING. CITY SHALL HAVE FORTY-EIGHT (48) HOURS FOR REVIEW.
6. ALL MANHOLES AND CATCH BASINS SHALL BE INSPECTED TWICE BY THE ENGINEERING INSPECTOR - ONCE PRIOR TO BACKFILL AND THEN PRIOR TO ACCEPTANCE OF IMPROVEMENTS. CALL PWD MAIN OFFICE (208) 746-1316 FOR INSPECTION SCHEDULING.
7. CLOSED CONDUITS (OR PIPELINES) FOR STORMWATER CONVEYANCE IN THE CITY'S STORMWATER SYSTEM MUST BE A MINIMUM OF 12 INCH DIAMETER. THE PIPE MATERIAL MAY BE PLASTIC, STEEL, REINFORCED CONCRETE OR AN APPROVED MATERIAL.
8. MINIMUM PIPE SLOPE SHALL BE 0.5% AND MINIMUM DESIGN VELOCITY WHEN FLOWING FULL SHALL BE NOT LESS THAN 2 FEET PER SECOND AND MAXIMUM VELOCITY SHOULD NOT BE MORE THAN 8 FEET PER SECOND.
9. JUNCTIONS OF 3 OR MORE PIPES, CHANGES IN ALIGNMENT, SLOPE AND/OR CHANGES IN PIPE DIAMETER SHALL BE MADE ONLY AT CATCH BASINS OR MANHOLES.
10. STEEP SLOPE INSTALLATION SHALL BE INSTALLED AS PER MANUFACTURERS PIPE SPECIFICATIONS.
11. MANHOLE SHALL BE INSTALLED AT THE END OF EACH LINE, AT ALL CHANGE IN SIZE OR ALIGNMENT, AT DISTANCE NOT GREATER THAN 400 FEET OR AT CITY ENGINEER'S REQUIRED SPACING. ALL OTHER CHANGES IS SPACING MUST HAVE WRITTEN APPROVAL FROM PUBLIC WORKS DEPARTMENT.
12. LOCATING WIRE SHALL BE INSTALLED WITH ALL PUBLIC STORM PIPE INSTALLATIONS. SEE CITY DWG 1-8, 'IDENTIFYING TAPE DETAIL'.
13. CATCH BASINS AND MANHOLES SHALL BE ACCESSIBLE TO VEHICLES AND EQUIPMENT FOR MAINTENANCE AND BE WITHIN RIGHT-OF-WAY OF A MINIMUM EASEMENT WIDTH OF 20 FEET. PROPOSED ACCESS ROUTE MUST BE APPROVED BY CITY ENGINEER. MAINTENANCE ACCESS ROUTES THAT DO NOT FOLLOW THE STORMLINE MUST HAVE A MINIMUM 12' EASEMENT.

**STORMWATER SYSTEM
GENERAL NOTES**

Standards Dwg - City\Current\Std\6-StormSewer\General_Notes_stm.dwg



- NOTES:
1. ALL UNITS TO MEET OR EXCEED THE REQUIREMENTS OF ASTM C478/AASHTO M199. JOINTS SHALL BE RUBBER GASKET CONFORMING TO ASTM C443 AND SHALL BE GROUDED FROM THE INSIDE. LIFT HOLES BE GROUDED FROM THE OUTSIDE AND INSIDE OF THE MANHOLE.
 2. PRECAST BASES SHALL BE FURNISHED WITH CUTOUTS OR KNOCKOUTS. KNOCKOUTS SHALL HAVE A WALL THICKNESS OF 2" MINIMUM.
 3. CONNECTION TO MANHOLE SHALL BE MADE USING RESILIENT CONNECTOR CONFORMING TO ASTM C-923 SUCH AS KOR-N-SEAL, A-LOK OR APPROVED EQUAL. HAVE A WALL THICKNESS OF 2" MINIMUM.
 4. USE A MINIMUM OF 1/2" OF NON-SHRINK GROUT BETWEEN RISERS, CONE AND FRAME.
 5. RISERS, UNIT SECTIONS AND THE FRAME SHALL NOT BE MORE THAN ONE INCH OUT OF ALIGNMENT WITH THE MANHOLE BASE; PIPES SHALL BE FLUSH WITH INSIDE EDGE OF MANHOLE.
 6. SEE DWG NO 6-4 FOR CONCRETE MANHOLE COLLAR.

CITY OF LEWISTON, IDAHO PUBLIC WORKS DEPARTMENT	
STORMWATER TYPE 1 MANHOLE	
APPROVED FOR PUBLICATION <i>Shawn Stiller</i> 12/15/20 City Engineer Date	DWG. NO. 6-2

Standards\2010-Standards\6-StormSewer\MH Type 1.dwg

REVISION CHECKED APPR. DATE DESCRIPTION

SCALE SHEET SIZE D

DRAWN BY MEE DATE 02-02-21 SHEET C13

CHECKED BY JSH JOB # 2022

DESIGNED BY JSH

PROJECT # 21107

DATE OF ISSUE 12/15/20

PROJECT NAME THE ESTATES AT CANYON CREST

PROJECT LOCATION RPL DEVELOPMENT, LLC LEWISTON, IDAHO

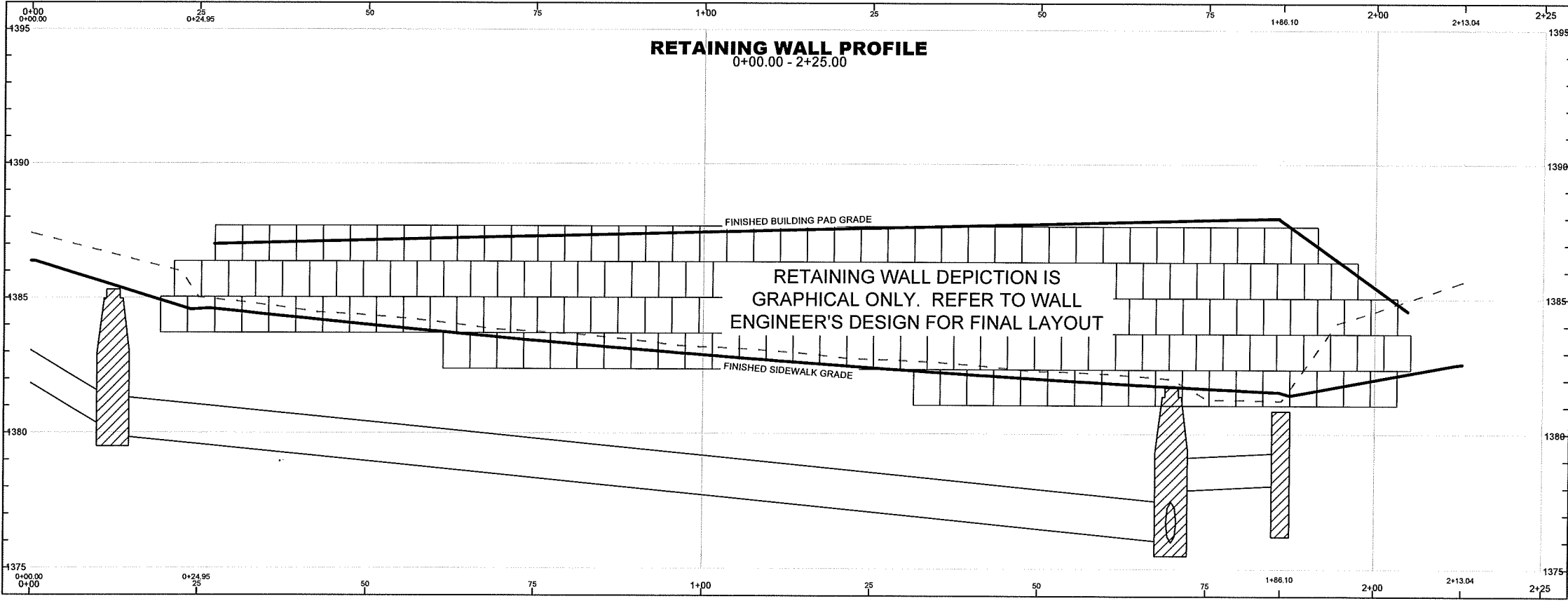
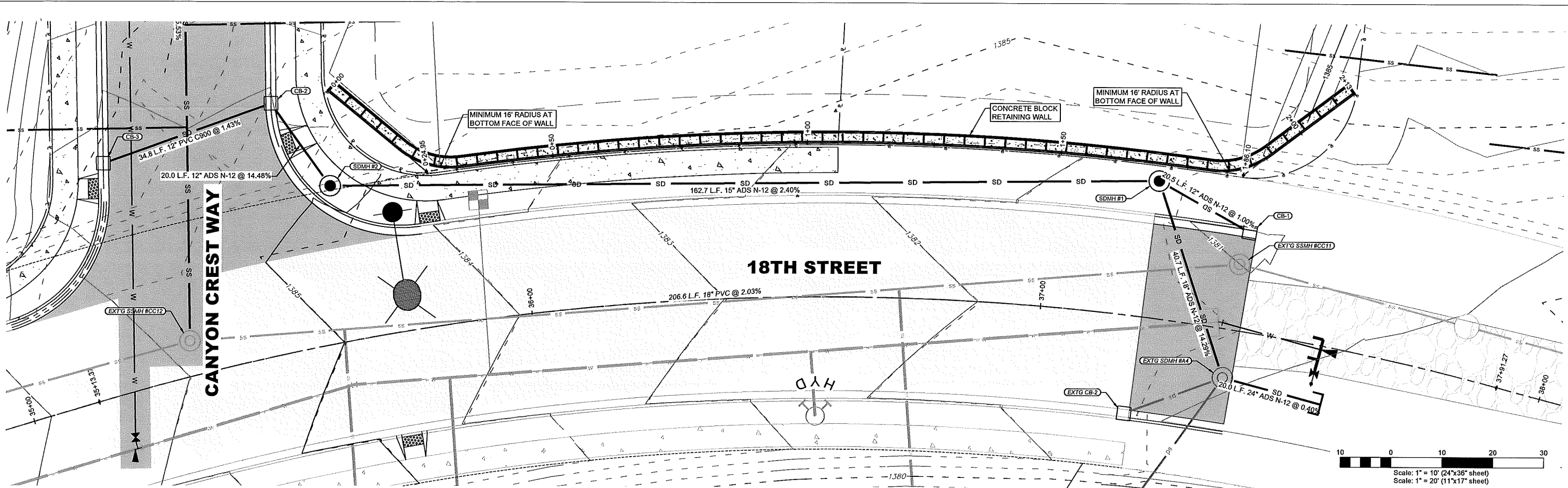
DRAWING # 2022-C13

THE ESTATES AT CANYON CREST
PHASE III-C
STANDARD DRAWINGS
RPL DEVELOPMENT, LLC
LEWISTON, IDAHO

HEDCO

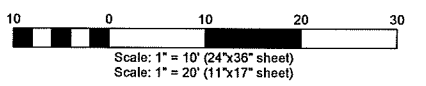
HAMMOND ENGINEERING & DEVELOPMENT CO.
23020 Penny Lane, Jullietta, Idaho 83555
(208) 843-9503

SHEET **C13**

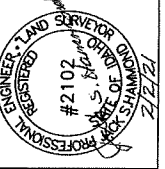


FG PAD | FG SIDEWALK

1386.36	1384.59	1387.14	1384.01	1387.30	1383.43	1387.46	1382.91	1387.62	1382.44	1387.77	1382.03	1387.93	1381.08	1385.42	1382.02
---------	---------	---------	---------	---------	---------	---------	---------	---------	---------	---------	---------	---------	---------	---------	---------

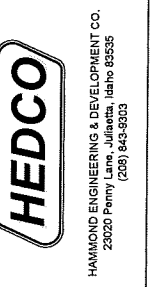


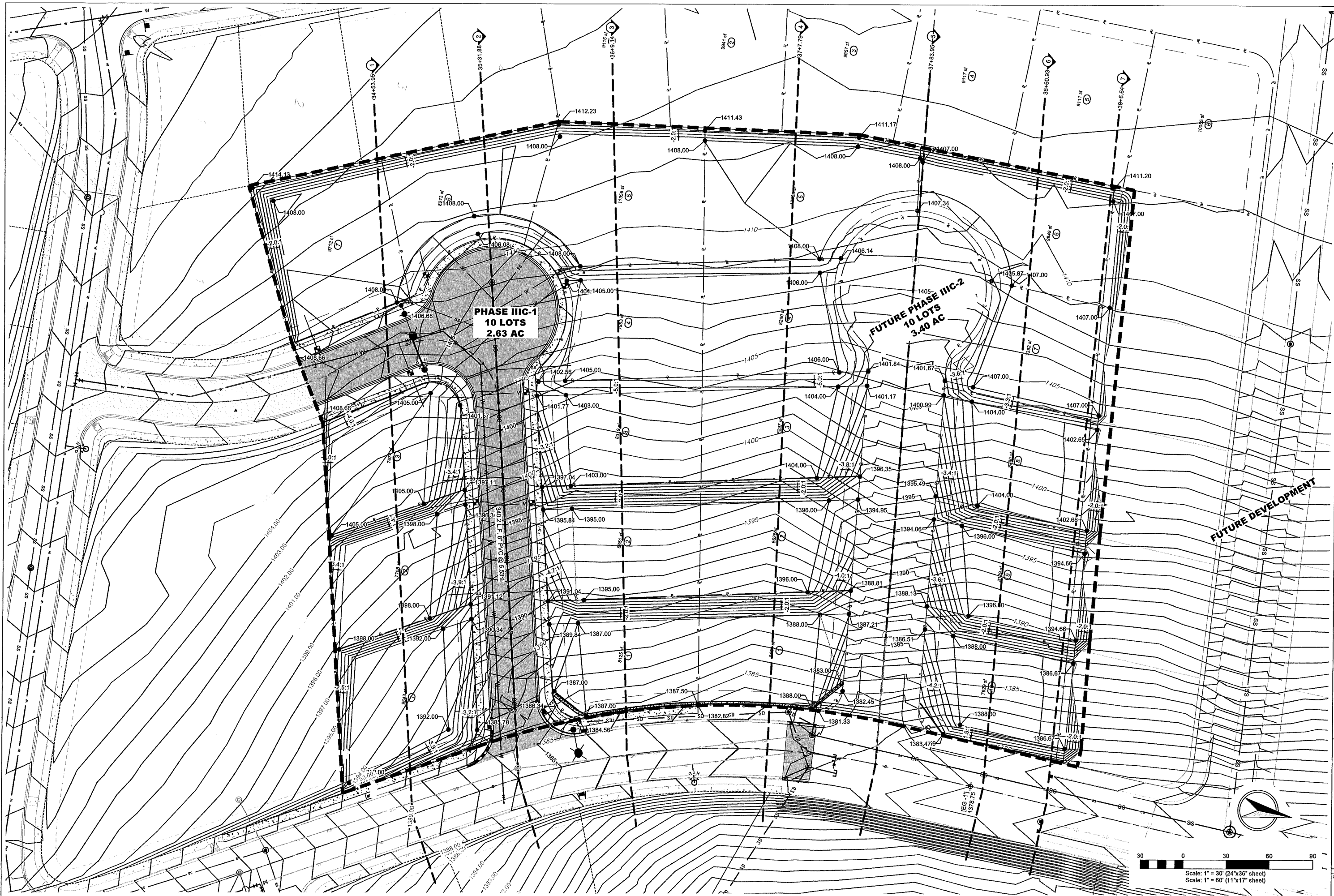
REV. LTR.	DATE	DESCRIPTION	CHECKED	APPR.



SHEET SIZE	D	CHECKED BY	JSH
DRAWN BY	MEE	DATE	02-02-21
SHEET	C15	DRAWING #	2022-C15

THE ESTATES AT CANYON CREST PHASE III C-1
18TH STREET RETAINING WALL
RPL DEVELOPMENT, LLC
LEWISTON, IDAHO

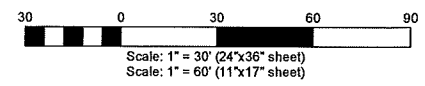




**PHASE IIIC-1
10 LOTS
2.63 AC**

**FUTURE PHASE IIIC-2
10 LOTS
3.40 AC**

FUTURE DEVELOPMENT



**THE ESTATES AT CANYON CREST PHASE IIIC-1
LOT GRADING PLAN
RPL DEVELOPMENT, LLC
LEWISTON, IDAHO**

HEDCO
HAMMOND ENGINEERING & DEVELOPMENT CO.
23020 Perry Lane, Jilka, Idaho 83535
(208) 843-5303

SHEET # **C16**

DRAWING # **2022-C16**

SCALE: 1"=30' (24"x36" sheet)
Scale: 1"=60' (11"x17" sheet)

DATE: 01-18-21

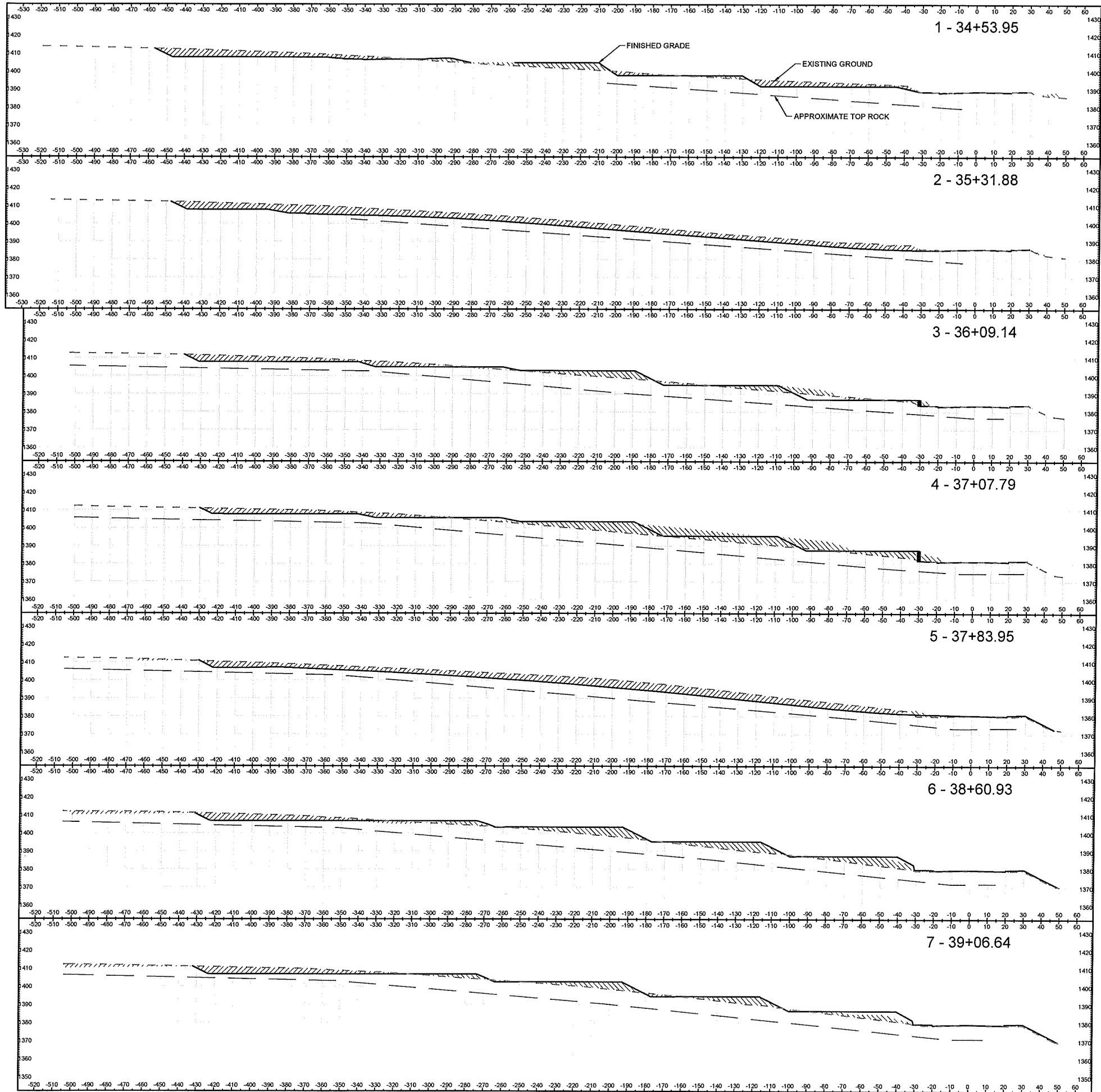
JOB: 2022

CHECKED BY: JSH

DESIGNED BY: MEE

PROFESSIONAL ENGINEER - LAND SURVEYOR
#2102
STATE OF IDAHO
2/2/21

REVISION DESCRIPTION



Total Volume Table						
Station	Fill Area	Cut Area	Fill Volume	Cut Volume	Cumulative Fill Vol	Cumulative Cut Vol
34+53.95	264.41	588.85	0.00	0.00	0.00	0.00
35+31.88	7.04	1289.05	430.40	3050.79	430.40	3050.79
36+09.14	367.37	377.11	693.89	3695.52	1124.29	6746.31
37+07.79	1046.84	260.19	3317.95	1992.29	4442.24	8738.60
37+83.95	64.48	1171.43	1980.06	3028.62	6422.30	11767.22
38+60.93	709.50	395.96	1103.28	2234.28	7525.59	14001.50
39+06.64	485.74	410.76	1011.73	682.87	8537.32	14684.37

THE ESTATES AT CANYON CREST PHASE IIIC-1
 LOT GRADING X-SECTIONS
 RPL DEVELOPMENT, LLC
 LEWISTON, IDAHO

HEDCO

HAMMOND ENGINEERING & DEVELOPMENT CO.
 23020 Penny Lane, Jullietta, Idaho 83335
 (208) 843-9303

SCALE: 1"=30'
 DRAWN BY: MEE
 DATE: 02-01-21
 SHEET: C1

CHECKED BY: JSH
 JOB #: 2022
 DRAWING #: 2022-C1

SHEET SIZE: D

ENGINEER: LAND SURVEYOR
 #2102
 STATE OF IDAHO
 J. S. SHAW
 2/2/22

REVISION
 DESCRIPTION
 CHECKED
 APPD.

C17