

IMPROVEMENT PLANS

PORT OF LEWISTON WATERLINE EXTENSION LEWISTON, IDAHO 83501

NO.	DATE	BY	DESCRIPTION
1	12/17/14	EDP	CITY OF LEWISTON WATER DEPARTMENT - 12-09-14

COVER SHEET
PORT OF LEWISTON
1626 6TH AVE. NORTH
LEWISTON, ID 83501

KELTIC ENGINEERING, INC.
1626 North-Seward Street, Ste. 231 • Spokane, WA 99218 • (509) 464-0096 fax
• Development • Planning • Design • Construction Management

PROFESSIONAL ENGINEER
No. 5054
State of Idaho
Exp. 12/31/16

DESIGN BY: RSW
CHECKED BY: EPH
DATE: 12-23-14
LAST REV: 02-12-14 (JDU)
PROJECT NO: 3-1-001
SHEET: 1 OF 4

Approved for civil conditions
14-000001

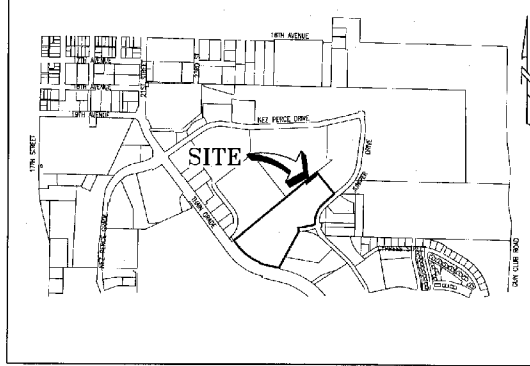
AGENCY TELEPHONE NUMBERS

CITY OF LEWISTON BUILDING INSPECTION CONTACT: JOHN SMITH	(509) 780-1835
CITY OF LEWISTON WATER & SEWER CONTACT: DAVE SIX	(208) 743-7461
CITY OF LEWISTON PUBLIC WORKS DEPT. CONTACT: TOM McGOVY	(208) 746-1316
AVISTA UTILITIES CONTACT: TED BOYLE	(208) 798-1473
CENTURY LINK CONTACT: TOM McGOVY	(208) 798-0807
CABLE ONE CONTACT: DAN SMITH	(208) 746-3325
UNDERGROUND UTILITY LOCATE (CALL 48 HOURS BEFORE YOU DIG)	1-800-342-1585 or call 811
DEVELOPER: PORT OF LEWISTON 1626 8TH AVE. NORTH LEWISTON, ID 83501 CONTACT: DAVID DOERINGSFELD	(208) 743-5531

LEGEND

---	EXISTING CONTOUR
○	EXISTING PROPERTY CORNER
○	EXISTING MONUMENT
▨	EXISTING A.C.
▨	EXISTING CONCRETE
---	EXISTING UNDERGROUND JOINT UTILITIES
SS	EXISTING SEWER
W	EXISTING WATER
SD	EXISTING STORM DRAIN
⊕	EXISTING SEWER MANHOLE
⊕	EXISTING STORM DRAIN MANHOLE
⊕	EXISTING GATE VALVE
⊕	EXISTING THRUST BLOCK
⊕	EXISTING FIRE HYDRANT
⊕	EXISTING STREET LIGHT
---	EDGE OF GRAVEL
---	PROPOSED WATER SERVICE
---	PROPERTY LINE
---	EXISTING RIGHT-OF-WAY
---	CENTER LINE OF STREET

VICINITY MAP



SITE PERMIT QUANTITIES

DOMESTIC WATER LINE 165 L.F.

APPLICABLE STANDARD DETAILS

- 1-4 BACKFILL CLASS A
- 1-8 IDENTIFYING TAPE DETAIL
- 4-1 POTABLE & NON-POTABLE WATERLINE SEPARATION
- 4-2 CAST IRON VALVE BOX WITH ASSEMBLY
- 1-8 THRUST BLOCK DETAIL

CONTRACTOR TO OBTAIN A CURRENT CITY OF LEWISTON STANDARDS BOOKLET FROM THE PUBLIC WORKS DEPARTMENT.

SHEET INDEX

SHEET 1	COVER SHEET
SHEET 2	CONSTRUCTION NOTES
SHEET 3	EROSION CONTROL PLAN
SHEET 4	WATERLINE PLAN & PROFILE

SPECIAL INSPECTIONS

ITEM	MATERIAL	TEST FREQUENCY	ACCEPTANCE	TEST FREQUENCY	INSPECTION	DATE	BY
1. ALL UTILITY TRENCHES & STRUCTURES							
2. BACKFILL							
3. CONCRETE							
4. EROSION CONTROL							
5. UNDERGROUND UTILITY							
6. TRENCH SHIELDING							
7. TRENCH PROTECTION							
8. TRENCH BACKFILL							
9. TRENCH PROTECTION							
10. TRENCH PROTECTION							
11. TRENCH PROTECTION							
12. TRENCH PROTECTION							
13. TRENCH PROTECTION							
14. TRENCH PROTECTION							
15. TRENCH PROTECTION							
16. TRENCH PROTECTION							
17. TRENCH PROTECTION							
18. TRENCH PROTECTION							
19. TRENCH PROTECTION							
20. TRENCH PROTECTION							



CALL 2 BUSINESS DAYS IN ADVANCE BEFORE YOU DIG, GRADE, OR EXCAVATE FOR THE MARKING OF UNDERGROUND MEMBER UTILITIES

NOTE: 1) SPECIAL INSPECTIONS TO BE COORDINATED BY CONTRACTOR AND PERFORMED BY THE COMPANIES LISTED ABOVE. 2) OUR NOTICE TO THESE COMPANIES IS REQUIRED PRIOR TO INSPECTION. 3) A MINIMUM OF 1 CONCRETE TEST IS REQUIRED FOR EACH 500 YD. OR A MINIMUM OF 1 TEST PER DAY.

• Plans Revised
as per conditions listed
1/28/14 Permit
center
• Keltic Eng Response letter
dated March 5, 2014

CONSTRUCTION NOTES

GENERAL NOTES

- 1) THE CONTRACTOR SHALL PAY FOR ALL NECESSARY PERMITS AND FEES.
- 2) THE CONTRACTOR SHALL INVESTIGATE ON SITE AND VERIFY ALL CONDITIONS AND DIMENSIONS OF THE PROJECT AND SHALL NOTIFY THE ENGINEER OF ANY DISCREPANCY IN THE CONTRACT DOCUMENTS REQUIRING MODIFICATION PRIOR TO PROCEEDING.
- 3) THE CONTRACTOR SHALL TAKE ALL NECESSARY PREVENTATIVE MEASURES TO PROTECT THE EXISTING IMPROVEMENTS ANY DAMAGE SHALL BE REPLACED AT NO COST TO THE OWNER.
- 4) THE CONTRACTOR SHALL COORDINATE THE WORK SCHEDULE SO AS TO HAVE A MINIMUM IMPACT ON THE EXISTING TRAFFIC. CONTRACTOR SHALL PROVIDE TRAFFIC CONTROL PER DAILY TRANSPORTATION INFORMATION STANDARDS SPECIFICATIONS.
- 5) OWNER'S PROPERTY CORNERS SHALL BE PROTECTED AT ALL TIMES AND THE CONTRACTOR SHALL OBTAIN THE SERVICES OF A PROFESSIONAL LAND SURVEYOR REGISTERED IN THE STATE OF IDAHO TO REPERMITS ALL CORNER UPON COMPLETION OF THE PROJECT. ALL EXISTING CORNERS OWNED BY CONTRACTOR OR OTHER ACTIVITY SHALL BE REPLACED BY A PROFESSIONAL LAND SURVEYOR.
- 6) ALL WORK SHALL CONFORM TO STATE AND LOCAL CODES AND CONFORM TO THE CITY OF LEWISTON STANDARD DRAWINGS AND STANDARD TECHNICAL SPECIFICATIONS.
- 7) SITE DISTANCES FOR ABUTTING PROPERTIES, DRIVEWAYS, AND IMPROVEMENTS MUST BE MAINTAINED.
- 8) IMPROVEMENTS CONSTRUCTION ON RIGHT-OF-WAY REQUIRES A STREET CLOSURE PERMIT OBTAINED AT THE CONSTRUCTION MANAGEMENT SECTION OF THE PUBLIC WORKS DEPARTMENT.
- 9) SPECIAL INSPECTION IS REQUIRED FOR SOIL COMPACTION AND WATER MAINS.
- 10) ALL WATER AND SEWER UTILITIES ARE TO BE CONSTRUCTED IN ACCORDANCE WITH STATE OF IDAHO STANDARDS FOR PUBLIC DRINKING WATER SYSTEMS.
- 11) WATER MAINS SHALL BE INSTALLED BY CONTRACTORS WITH EXPERIENCE INSTALLING PUBLIC WATER MAINS.
- 12) WATER MAINS SHALL BE LAID ONLY IN DEDICATED STREETS OR IN EASEMENTS WHICH HAVE BEEN GRANTED AND ACCEPTED BY THE CITY OF LEWISTON.
- 13) WATER PIPE SHALL BE P.V.C., CLASS 200 (MINIMUM) CONFORMING TO AWWA STANDARD C200.
- 14) WATER LINE FITTING SHALL BE CAST IRON OR DUCTILE IRON CONFORMING TO AWWA STANDARD C183.
- 15) THE CONTRACTOR SHALL PROVIDE LOCATE WIRE AND BURY TAPE IN PVC WATER MAIN TRENCH PER CITY OF LEWISTON STANDARD 1-B.
- 16) THRUST BLOCKS SHALL CONFORM TO CITY OF LEWISTON STANDARD DETAIL 4-4.
- 17) GATE VALVES SHALL CONFORM TO AWWA C 616-66 RESILIENT SEATED GATE VALVES FOR WATER AND SEWAGE SYSTEMS AND SHALL BE IRON BODY BRONZE MOTIONED DOUBLE END WITH BRONZE YOKING AND DRIVING STUFFING BOX.
- 18) THE CONTRACTOR SHALL PROVIDE 4 FT MIN. COVER ON ALL WATER LINES AND PROVIDE 18" MINIMUM VERTICAL CLEARANCE BETWEEN POTABLE WATER LINE AND NON-POTABLE WATER LINE CROSSING FOR ALL CROSSINGS LESS THAN 18" OF VERTICAL CLEARANCE. NON-POTABLE OR POTABLE LINE MUST BE CASED BY A LARGER DIAMETER CASING PIPE FOR A HORIZONTAL DISTANCE OF TEN FEET ON BOTH SIDES OF THE CROSSING, WITH NO JOINTS, AS SHOWN ON CITY OF LEWISTON STANDARD DETAIL 4-1.
- 19) WATER LINE CONNECTIONS TO MAINS AND LATERALS SHALL BE LEFT UNCOVERED UNTIL AFTER THE CITY ENGINEER HAS INSPECTED AND APPROVED THE WORK. AFTER APPROVAL OF CONNECTION, THE TRENCH SHALL BE BACKFILLED AND REIFIED.
- 20) AN APPROVED BACKFLOW PREVENTION ASSEMBLY IS REQUIRED ON THE SUPPLY WATER LINE WHEN FILLING THE NEW WATER MAIN DURING UNEXPECTED AND FLOWING. THE BACKFLOW PREVENTION ASSEMBLY AND SUPPLY PIPING MUST BE REMOVED DURING HYDROSTATIC PRESSURE TESTING.
- 21) PROPOSED WATER LINES SHALL BE HYDROSTATICALLY TESTED AS PER AWWA C200-63. TESTS SHALL BE 1/2 TIMES WORKING PRESSURE, WITH A MINIMUM OF 160 PSI. PRESSURE SHALL BE HELD FOR 2 HOURS WITH NO DROP IN PRESSURE. ENGINEER SHALL BE RESPONSIBLE FOR THIS FINAL CONNECTION AND THE CITY WILL INSPECT THIS WORK. BEFORE INSTALLATION, THE INTERIORS OF ALL PIPES AND FITTINGS USED TO MAKE THE CONNECTION MUST BE SWABBED OR SPRAYED WITH A 1% HYPOCHLORITE SOLUTION.
- 22) THE CONTRACTOR IS RESPONSIBLE FOR FLUSHING AND PRESSURE TESTING THE NEW WATER MAIN. CONTACT THE PLUMBING INSPECTOR AT 745-1414 FOR A PRESSURE TEST OF THE WATER DIVISION AT 745-1414. THESE TESTS MUST BE COMPLETED AND APPROVED BEFORE THE WATER DEPARTMENT WILL BEGIN DISINFECTION PROCEDURES.
- 23) UPON COMPLETION AND APPROVAL OF THE PRESSURE TEST BY THE PROJECT INSPECTOR, WHICH SHALL BE A PROFESSIONAL ENGINEER INSPECTING ALL WATER MAIN PROJECTS AND WHICH SHALL BE A FIRE DEPARTMENT INSPECTOR AND A CITY PLUMBING INSPECTOR FOR ALL FIRE LINE CONNECTIONS, THE INSPECTOR WILL NOTIFY THE CITY ENGINEERING DEPARTMENT (248-2196). THE ENGINEERING DEPT. WILL THEN NOTIFY THE CITY WATER DIVISION TO PROCEED WITH THE COORDINATION FOR THE DISINFECTION AND SAMPLING OF THE NEW WATER MAIN. A COORDINATION BLOW-OFF AND SAMPLING TAP IS REQUIRED.
- 24) THE NUMBER OF WATER SAMPLES TAKEN WILL DEPEND UPON THE LENGTH AND NUMBER OF BRANCHES OF THE NEW WATER MAIN, BUT A MINIMUM OF TWO SAMPLES MUST BE TAKEN. THESE SAMPLES SHALL BE TAKEN FROM EACH END OF THE NEW WATER MAIN. TWO CONSECUTIVE SAMPLES AT LEAST TWENTY-FOUR HOURS APART MUST BE REPORTED AND DISPLAY NEGATIVE BACTERIOLOGICAL RESULTS. RESULTS FROM BACTERIOLOGICAL TESTING WILL BE AVAILABLE APPROXIMATELY 28 HOURS AFTER THE LAST SAMPLE IS TAKEN. THE CITY WILL CHARGE A FEE FOR THE CHLORINATION AND BACTERIAL TESTING.
- 25) UPON COMPLETION, CONTRACTOR SHALL PROVIDE AS-BUILT DRAWINGS, COMPLETE WITH ELEVATIONS, TO THE ENGINEER OF RECORD TO BE APPROVED.

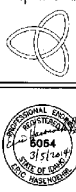
WATER NOTES

- 1) ALL WATER SYSTEMS ARE TO BE CONSTRUCTED IN ACCORDANCE WITH IDAPA AND ALL STATE CODES FOR PUBLIC DRINKING WATER SYSTEMS MUST BE FOLLOWED COUPLED WITH THE CITY OF LEWISTON WATER STANDARDS.
 - 2) CONTRACTOR SHALL COORDINATE WITH THE CITY OF LEWISTON WITH EXPERIENCE INSTALLING PUBLIC WATER MAINS AND APPROVED BY THE CITY OF LEWISTON.
 - 3) MAIN WATER LINES MUST BE LOADED AND PLACEMENT SHALL UNDO EMBLEMENTS EXCEPT WHEN NECESSITATED BY LAND SHOWINGS. GASEMETS SHALL BE A MINIMUM OF 20'. WATER LINES SHALL BE LINED IN THE CITY OF LEWISTON.
 - 4) WATER PIPE SHALL BE P.V.C., CLASS 150 (MINIMUM) CONFORMING TO AWWA STANDARD C200.
 - 5) WATER LINE FITTINGS SHALL BE CAST IRON OR DUCTILE IRON CONFORMING TO AWWA STANDARD C183.
 - 6) PRESSURE REDUCTION VALVES ARE REQUIRED ON ALL SERVICE LINES.
 - 7) INCLUDE ALL MATERIALS EXCEPT THE METER WHICH SHALL BE PROVIDED BY THE CITY. METERS SHALL BE PLACED TO AVOID CONFLICT WITH OTHER UTILITIES DRIVEWAY LOCATIONS, AND SHALL BE IN THE RIGHT OF WAY.
 - 8) BACKFLOW ASSEMBLIES ARE REQUIRED ON ALL IRIGATION SYSTEMS AND OTHER IDENTIFIED HAZARDS SUCH AS IODIVA BACKFLOW ASSEMBLY SHALL BE INSTALLED AS PER STANDARDS AND SHALL BE ACCESSIBLE TO PERMIT TESTING.
 - 9) HYDRANTS SHALL BE SPACED AT A MAXIMUM OF 500 IN RESIDENTIAL AREAS AND 400 IN COMMERCIAL AREAS. ALL HYDRANTS SHALL HAVE VALVES ON THE HYDRANT BRANCH LINE. HYDRANTS SHALL HAVE TWO, 2 1/2" PORTS AND ONE 4 1/2" STEAMER PORT. ALL HYDRANTS SHALL BE THRUST BLOTTED OR RETAINED AND ALL FITTINGS SHALL BE THRUST BLOTTED. THRUST BLOTTES SHALL CONFORM TO CITY OF LEWISTON STANDARD DETAIL 4-1.
 - 10) FIRE HYDRANTS SHALL CONFORM TO AWWA C552 AND SHALL BE WATERLOG PAKER OR MEULEUR CENTURIAN. HYDRANTS SHALL BE NOT CONTROLLED THAT THE DIRECTION OF TURNER CONNECTION MAY BE ROTATED TO FACE THE ROADWAY. A 6 INCH BY 6 INCH MECHANICAL JOINT CONNECTION WITH LOGS AND SHACKLE RODS IS TO BE USED. A GATE VALVE SHALL BE INSTALLED AT EACH HYDRANT AS SHOWN ON STANDARD DETAIL 4-12.
 - 11) ALL HYDRANTS USED FOR THIS PROJECT SHALL BE PROVIDED WITH A 6 INCH INTERNAL HYDRANT STORZ ADAPTOR. ALL NOZZLES SHALL BE PROVIDED WITH THE STORZ BOLD CAP WITH SUCTION SEAL AND AIRPORT CABLE.
 - 12) HYDRANTS SHALL HAVE A MINIMUM 1" SUPPLY LINE.
 - 13) PRESSURE REDUCTION PITS MAY BE REQUIRED DUE TO ELEVATION, DIFFERENT PRESSURE ZONE TRENDS, ETC.
 - 14) GATE VALVES SHALL CONFORM TO AWWA C 616-66 RESILIENT SEATED GATE VALVES FOR WATER AND SEWAGE SYSTEMS AND SHALL BE IRON BODY BRONZE MOTIONED DOUBLE END WITH BRONZE YOKING AND DRIVING STUFFING BOX.
 - 15) VALVES SHALL BE PLACED ON ALL BRANCHES OF TEES OR CROSSINGS. A VALVE IS REQUIRED AT A MINIMUM OF EVERY 1000 OF MAIN WATER LINE.
 - 16) THE CONTRACTOR SHALL PROVIDE 4 FT MIN. COVER ON ALL WATER LINES AND PROVIDE 18" MINIMUM VERTICAL CLEARANCE BETWEEN POTABLE WATER LINE AND NON-POTABLE WATER LINE CROSSINGS. FOR ALL CROSSINGS LESS THAN 18" OF VERTICAL CLEARANCE, NON-POTABLE OR POTABLE LINE MUST BE CASED BY A LARGER DIAMETER CASING PIPE FOR A HORIZONTAL DISTANCE OF TEN FEET ON BOTH SIDES OF THE CROSSING, WITH NO JOINTS, AS SHOWN ON CITY OF LEWISTON STANDARD DETAIL 4-1.
 - 17) PROPOSED WATER LINES SHALL BE HYDROSTATICALLY TESTED AS PER AWWA C200-63. TESTS SHALL BE 1/2 TIMES THE WORKING PRESSURE, WITH A MINIMUM OF 160 PSI. PRESSURES SHALL BE HELD FOR 2 HOURS WITH NO DROP IN PRESSURE. ENGINEER SHALL BE RESPONSIBLE FOR THIS FINAL CONNECTION AND THE CITY ENGINEER WILL INSPECT THIS WORK. BEFORE INSTALLATION, THE INTERIORS OF ALL PIPES AND FITTINGS USED TO MAKE THE CONNECTION MUST BE SWABBED OR SPRAYED WITH A 1% HYPOCHLORITE SOLUTION. THE WATER DIVISION WILL CONTACT THE CONTRACTOR TO SCHEDULE WATER MAIN DISINFECTION AND BACTERIAL TESTING.
 - 18) TWO CONSECUTIVE BACTERIAL TESTS 24 HOURS APART MUST BE COMPLETED BEFORE THE WATER LINE CAN BE CONNECTED TO THE CITY SYSTEM. THIS CREATES A MINIMUM OF 48 HOURS AFTER CHLORINATION BEFORE THE LINE CAN BE CONNECTED. THE WATER DIVISION, TO MAINTAIN THE INTERIORS OF THE SYSTEM, SHALL WITHNESS THE FINAL TEST. THE CITY WILL CHARGE A FEE FOR CHLORINATION AND BACTERIAL TESTING.
 - 19) DISINFECTION OF WATER PIPES SHALL BE IN ACCORDANCE WITH AWWA C 651-92. ISOLATE NEW PIPE FROM EXISTING SYSTEM TO PREVENT POTENTIAL CROSS-CONNECTION. ENGINEER OF RECORD SHALL WITHNESS TEST.
 - 20) A FIRE INSPECTOR SHALL MUST WITNESS A FIRE LINE PRESSURE TEST. FIRE LINE TESTS SHALL BE AT 200 PSI.
 - 21) THE WATER DIVISION WILL ONLY TAP FIRE LINE CONNECTIONS AND THE DIVISION WILL FURNISH ALL MATERIALS AND LABOR INCLUDING THRUST BLOCKING. FIRE LINES WILL REQUIRE BACKFLOW DETECTOR CHECK ASSEMBLIES.
 - 22) THE CONTRACTOR SHALL PROVIDE LOCATE WIRE AND BURY TAPE IN PVC WATER MAIN TRENCH PER CITY OF LEWISTON STANDARD 1-B.
 - 23) IF COMBUSTIBLE BUILDING MATERIALS ARE USED (INCLUDING FRAMING) THE WATER SUPPLY (INCLUDING MAINS AND HYDRANTS) SHALL BE DESIGNED, INSTALLED, TESTED AND APPROVED BY THE FIRE DEPARTMENT PRIOR TO STOCKPILING COMBUSTIBLE BUILDING MATERIALS.
 - 24) WATER SUPPLY SYSTEMS FOR PHASED CONSTRUCTION SHALL PROVIDE REQUIRED FINE FLOWS AT ALL PHASES.
 - 25) TREES, PLANTS, TREES AND/OR SHRUBS SHALL NOT BE PLACED OR KEPT NEAR FIRE HYDRANTS. FIRE DEPARTMENT INLET CONNECTIONS OR FIRE PROTECTION SYSTEM CONTROL VALVES IN A MANNER THAT WOULD PREVENT SUCH EQUIPMENT FROM BEING IMMEDIATELY ACCESSIBLE BY THE FIRE DEPARTMENT. IFC 608.4.
 - 26) WATER LINE CONNECTIONS TO MAINS AND LATERALS SHALL BE LEFT UNCOVERED UNTIL AFTER THE CITY ENGINEER HAS INSPECTED AND APPROVED THE WORK. AFTER APPROVAL OF CONNECTION, THE TRENCH SHALL BE BACKFILLED AS SPECIFIED.
- ### CITY OF LEWISTON'S NEW WATER MAIN CONSTRUCTION PROCEDURES:
- 1) NEW WATER MAINS THAT ARE INSTALLED, WHETHER EXPANDING A DISTRIBUTION SYSTEM OR ADDING A FIRE LINE, MUST BE PHYSICALLY SEPARATED FROM THE EXISTING SYSTEM UNTIL SATISFACTORY FLUSHING, PRESSURE TESTING, DISINFECTION AND BACTERIOLOGICAL SAMPLING IS COMPLETED. THE NEW WATER MAIN MUST BE CONSIDERED CONTAMINATED AND THE CHLORINE CONCENTRATION USED FOR DISINFECTION (MINIMUM 24 mg/L) MAKES THE WATER NON-POTABLE.
 - 2) THE CITY WILL PERFORM THE TAP ONLY FOR THESE NEW WATER MAIN CONNECTIONS AT A RATE DETERMINED ON EACH INDIVIDUAL TAP. THE CONTRACTOR IS TO COMPLETE THIS WORK. THE CITY WILL FURNISH ALL MATERIALS AND SUPPLY AN APPROVED BACKFLOW PREVENTION ASSEMBLY IS REQUIRED ON THE SUPPLY WATER LINE WHEN FILLING THE NEW WATER MAIN DURING DISINFECTION AND BACTERIAL TESTING. THE CONTRACTOR SHALL MAINTAIN THE WATER FROM ENTERING THE EXISTING SYSTEM. THE BACKFLOW PREVENTION ASSEMBLY AND SUPPLY PIPING MUST BE REMOVED DURING HYDROSTATIC PRESSURE TESTING.
 - 3) AFTER BACTERIOLOGICAL BACTERIOLOGICAL SAMPLE RESULTS ARE OBTAINED FROM THE NEW WATER MAIN, A SECTION OF CONNECTING PIPE MUST BE INSTALLED BETWEEN THE NEW SECTION AND THE EXISTING SYSTEM. THE CONTRACTOR WILL BE RESPONSIBLE FOR THIS WORK AND THE CITY WILL INSPECT THIS WORK. BEFORE INSTALLATION, THE INTERIORS OF ALL PIPES AND FITTINGS USED TO MAKE THE CONNECTION MUST BE SWABBED OR SPRAYED WITH A 1% HYPOCHLORITE SOLUTION.
 - 4) THE CONTRACTOR IS RESPONSIBLE FOR FLUSHING AND PRESSURE TESTING THE NEW WATER MAIN. CONTACT THE PLUMBING INSPECTOR AT 208-745-1318 FOR A PRESSURE TEST OR THE WATER DIVISION AT 208-745-1461. THESE TESTS MUST BE COMPLETED AND APPROVED BEFORE THE WATER DEPARTMENT WILL BEGIN DISINFECTION PROCEDURES.
 - 5) UPON COMPLETION AND APPROVAL OF THE PRESSURE TEST BY THE PROJECT INSPECTOR, WHICH SHALL BE A PROFESSIONAL ENGINEER INSPECTING ALL WATER MAIN PROJECTS AND WHICH SHALL BE A FIRE DEPARTMENT INSPECTOR AND A CITY PLUMBING INSPECTOR FOR ALL FIRE LINE CONNECTIONS, THE INSPECTOR WILL NOTIFY THE CITY ENGINEERING DIVISION. THE ENGINEERING DIVISION WILL THEN NOTIFY THE CITY WATER DIVISION TO PROCEED WITH THE COORDINATION FOR THE DISINFECTION AND SAMPLING OF THE NEW WATER MAIN. NOTE: NO HOSES OR FIRE HYDRANT SHALL BE USED IN COLLECTION OF SAMPLES. A COORDINATION BLOW-OFF AND SAMPLING TAP IS REQUIRED. THE DISINFECTION AND BACTERIOLOGICAL TESTING OF THE NEW MAIN SHALL ADHERE TO AWWA STANDARDS (AWWA C651-92).
 - 6) THE NUMBER OF WATER SAMPLES TAKEN WILL DEPEND UPON THE LENGTH AND NUMBER OF BRANCHES OF THE NEW MAIN, BUT A MINIMUM OF TWO SAMPLES MUST BE TAKEN. THESE SAMPLES SHALL BE TAKEN FROM EACH END OF THE NEW WATER MAIN. TWO CONSECUTIVE SAMPLES AT LEAST TWENTY-FOUR HOURS APART MUST BE REPORTED AND DISPLAY NEGATIVE BACTERIOLOGICAL RESULTS. RESULTS FROM BACTERIOLOGICAL TESTING WILL BE AVAILABLE APPROXIMATELY 28 HOURS AFTER THE LAST SAMPLE IS TAKEN. THE CITY WILL CHARGE A FEE FOR CHLORINATION AND BACTERIAL TESTING.

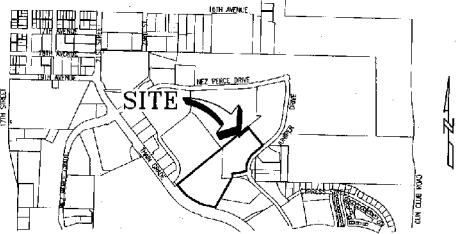
NO.	DATE	BY	DESCRIPTION
1	12/17/14	AM	3RD OF LEWISTON WATER COMMENTS - 02.20.14

CONSTRUCTION NOTES
PORT OF LEWISTON
 1626 6TH AVE. NORTH
 LEWISTON, ID 83501

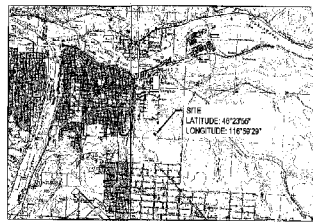
Keltic Engineering, Inc.
 3115 Adams Lane • Lewiston, Idaho 83501 • (208) 742-1315 • (208) 743-1514 fax
 9625 North Nevada Street, Ste. 310 • Spokane, WA 99218 • (509) 665-3000 • (509) 666-0070 fax
 • Development • Planning • Design • Construction Management



DESIGNED BY:	DATE:
DISIGNED BY: EPH	02-12-14
DATE:	02-12-14
DATE:	02-12-14 (LDS)
PROJECT NO:	3-1301
SHEET:	2 OF 4



Section 5, Twp. 35 N, Rng. 5 W, B.M.
SITE LOCATION MAP
Not to Scale



**USGS QUADRANGLE MAP
LEWISTON ORCHARDS NORTH**
Not to Scale

ACREAGE SUMMARY	
SITE AREA	18.06 AC ±
DISTURBED AREA	0.09 AC ±
IMPERVIOUS AREA	0.12 AC ±
PERVIOUS AREA	17.84 AC ±
TOTAL IMPERVIOUS AREA AT COMPLETION	0.12 AC ±
PERVIOUS / SEEDED AREA AT COMPLETION	0.09 AC ±

BENCHMARK DATUM

NEZ HERSEY DRIVE C
BRASS CAP
STA. 34-0451
ELEV. = 1127.7'
870' WEST OF INTERSECTION
WITH KUMPER DRIVE

STORMWATER OUTFLOW

INFILTRATES INTO GROUNDWATER STRATUM OR
RUNOFF THROUGH EXISTING DRAINAGEWAYS

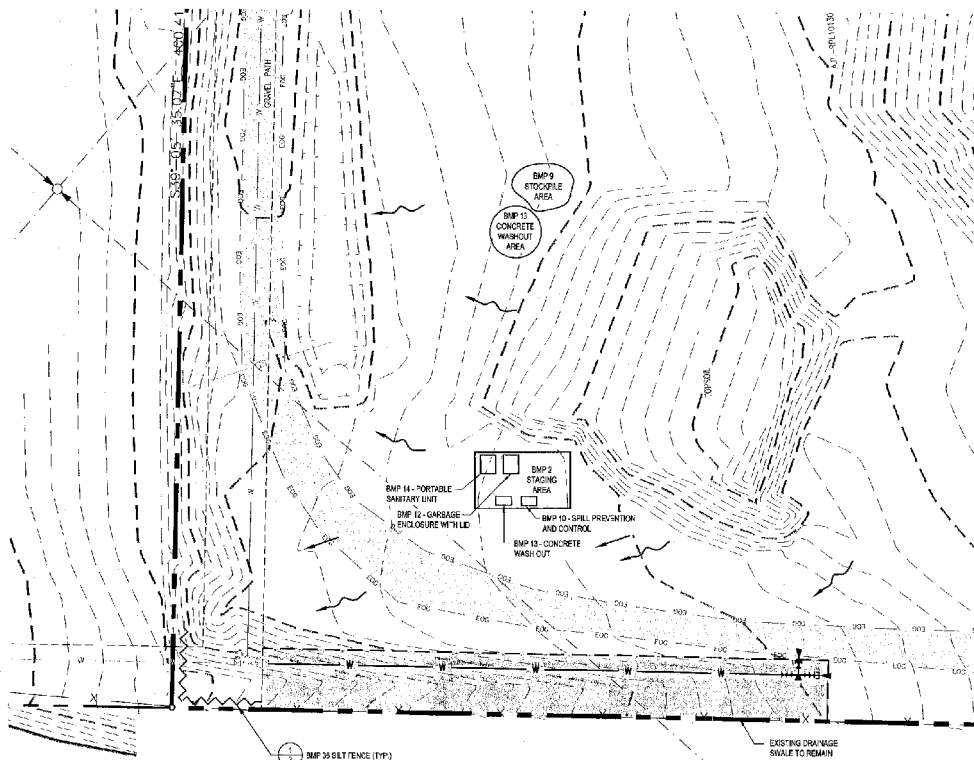
CLEARWATER RIVER - 1.3 ± MILES NORTH

LEGEND

- LIMITS OF CLEARING AND GRADING
- SILT FENCE
- PRE-DEVELOPED STORM WATER FLOW DIRECTION
- POST-DEVELOPED STORM WATER FLOW DIRECTION

NO.	DATE	BY	DESCRIPTION
1	12/27/24	JON	CITY OF LEWISTON GROW COMMUNITY - 79-45-1-4

EROSION CONTROL PLAN
PORT OF LEWISTON
1626 6TH AVE. NORTH
LEWISTON, ID. 83701



EROSION CONTROL NOTES

- APPROVAL OF THE EROSION CONTROL ELEMENT DOES NOT CONSTITUTE AN APPROVAL OF PERMANENT SITE OR DRAINAGE DESIGN.
- ALL CONTRACTORS SHALL BE INVOLVED WITH STORM WATER POLLUTION PREVENTION SHALL OBTAIN A COPY OF THE STORM WATER POLLUTION PREVENTION PLAN AND BECOME FAMILIAR WITH THEIR CONTENTS.
- IMPERVIOUS CONSTRUCTION REQUIREMENTS REPLACEMENT AND UPGRADEING OF ALL EROSION CONTROL MEASURES IS THE RESPONSIBILITY OF THE CONTRACTOR UNTIL ALL CONSTRUCTION IS COMPLETED AND APPROVED AND ALL VEGETATION / LANDSCAPING IS ESTABLISHED.
- THE EROSION CONTROL FACILITIES ON THIS PLAN MUST BE CONSTRUCTED IN CONJUNCTION WITH ALL CLEARING AND GRADING ACTIVITIES TO INSURE THAT SEDIMENT AND SOIL WATER DOES NOT ENTER THE DRAINAGE SYSTEM OR VIOLATE APPLICABLE WATER STANDARDS.
- ALL EROSION CONTROL FACILITIES SHALL BE INSPECTED ONLY BY THE CONTRACTOR AND MAINTAINED AS NECESSARY TO ENSURE THEIR CONTINUED EFFECTIVENESS.
- SUFFICIENT OIL AND GREASE ABSORBING MATERIALS SHALL BE MAINTAINED ON SITE OR READILY AVAILABLE TO CONTAIN AND CLEANUP FUEL OR CHEMICAL SPILLS AND LEAKS.
- ALL WASH WATER (CONCRETE, TRENDS, VEHICLE CLEANING EQUIPMENT CLEANING, ETC.) SHALL BE DETAINED AND PROPERLY TREATED OR DISPOSED.
- DURING INACTIVE PERIODS ON THE SITE, THE CONTRACTOR MUST PROTECT AND MAINTAIN EROSION CONTROL FACILITIES DURING A MONTH OF RAIN OR FOLLOWING A STORM.
- FILTER FABRIC SHALL BE PLACED UNDER THE GRATES OF NEWLY INSTALLED CATCH BASINS UNTIL PAVING OPERATIONS ARE COMPLETE. ALL CATCH BASINS AND CONCRETE LINES SHALL BE CLEANED PRIOR TO PAVING. THE CLEANING OPERATIONS SHALL NOT FLUSH SEDIMENT LOADED WATER INTO THE DOWNSTREAM SYSTEM.
- STABILIZED CONCRETION DISTANCES SHALL BE INSTALLED AT THE BEGINNING OF CONSTRUCTION AND SHALL BE MAINTAINED FOR THE DURATION OF THE PROJECT. ADDITIONAL MEASURES MUST BE TAKEN BY THE CONTRACTOR, IF NECESSARY, TO ENSURE THAT ALL EXISTING PAVED AREAS ARE KEPT CLEAR FOR THE DURATION OF THE PROJECT.
- SEED, MULCH, AND REVEGETATE ALL DISTURBED GROUND NOT PERMANENTLY HARD SURFACE AT THE EARLIEST POSSIBLE TIME. USE SEED MIXES AND RATES AS PER LANDSCAPE DESIGNER.
- EROSION CONTROL MEASURES MUST BE USED TO PREVENT CONSTRUCTION TO REDUCE OR ELIMINATE BLOWN DUST, EXCESSIVE RUNOFF, AND SOIL EROSION ACROSS PROPERTY LINES AND INTO STREETS AND RIGHT-OF-WAY. AND TO ELIMINATE TRACKING SOIL AND MUD ONTO STREETS FROM CONSTRUCTION EQUIPMENT AND VEHICLES. THE USE OF MOTOR OILS AND OTHER PETROLEUM BASED OR TOXIC LIQUIDS FOR DUST SUPPRESSION OPERATIONS IS PROHIBITED.
- MATERIAL TRACKED ONTO THE ROADWAY CANNOT BE WASHED INTO THE STORM DRAINAGE. STREETS SHALL BE SWEEP PRIOR TO A STORM EVENT OR AT THE REQUEST OF THE ENGINEER OR THE CITY.
- ALL DISTURBED AREAS THAT WILL BE INACTIVE FOR 10 DAYS DURING GROW SEASON (JULY 1 - SEPTEMBER 30) AND 5 DAYS DURING WET SEASON (OCTOBER 1 - JUNE 30) OR MORE MUST BE STABILIZED TEMPORARILY WITH THE USE OF SEEDING MATERIALS. GRASS, SOYABAN VARIETIES, STRAW HAY MULCH, WOOD CHIPPED FIBERS, TACKIFIERS, NETTING OR BLANKETS AS SHOWN ON SITE MAP.
- DESTABILIZED PORTIONS OF THE SITE WHERE CONSTRUCTION ACTIVITY HAS PERMANENTLY STOPPED SHALL BE PERMANENTLY STABILIZED AS SHOWN ON THE PLANS. THESE AREAS SHALL BE SEED, SOODED, AND OR REVEGETATED NO LATER THAN 30 DAYS AFTER THE LAST CONSTRUCTION ACTIVITY OCCURRING IN THESE AREAS. REFER TO THE GRADING PLAN AND / OR LANDSCAPE PLAN.
- ALL MATERIALS SPILLED, DROPPED, WASHED, OR TRACKED FROM VEHICLES ONTO ROADWAYS OR INTO STORM DRAINAGE MUST BE REMOVED IMMEDIATELY.
- CONTRACTORS OR SUBCONTRACTORS WILL BE RESPONSIBLE FOR REMOVAL OF SEDIMENT IN THE DETENTION POND AND ANY SEDIMENT THAT MAY HAVE COLLECTED IN THE STORM DRAINAGE SYSTEMS IN CONJUNCTION WITH STABILIZATION OF THE SITE.
- ON-SITE & OFF-SITE SOIL STOCKPILE AND BOROEN AREAS SHALL BE PROTECTED FROM EROSION AND SEDIMENTATION THROUGH IMPLEMENTATION OF BEST MANAGEMENT PRACTICES. STOCKPILE AND BOROEN LOCATIONS SHALL BE NOTED ON THE SITE MAP AND PERMITTED IN ACCORDANCE WITH GENERAL PERMIT REQUIREMENTS.
- SILTS SHALL BE LEFT IN A ROUGH ENDED CONDITION DURING THE GRADING PHASE TO REDUCE RUNOFF VELOCITIES AND EROSION.
- DUE TO THE GRADE CHANGES DURING THE DEVELOPMENT OF THE PROJECT, THE CONTRACTOR SHALL BE RESPONSIBLE FOR ADJUSTING THE EROSION CONTROL MEASURES (SILT FENCES, ETC.) TO PREVENT EROSION AND POLLUTANT ADVANCEMENTS.
- GENERAL CONTRACTORS TO DISCLOSE / IDENTIFY AREAS ON THE SITE MAPS, INSIDE OF THE LIMITS OF DISTURBANCE, FOR WASTE DISPOSAL, AND HAZARDOUS AND MATERIALS STORAGE. REFER TO THE SWPPP FOR REPORTABLE SPILL QUANTITIES OF PETROLEUM PRODUCTS AND / OR HAZARDOUS WASTES.

BMP MAINTENANCE EROSION NOTES

ALL MEASURES STATED ON THIS EROSION AND SEDIMENT CONTROL PLAN AND IN THE STORM WATER POLLUTION PREVENTION EXPLANATION, SHALL BE MAINTAINED IN FULLY FUNCTIONAL CONDITION UNTIL NO LONGER REQUIRED FOR A COMPLETED PHASE OF WORK OR FINAL STABILIZATION OF THE SITE. ALL EROSION AND SEDIMENTATION CONTROL MEASURES SHALL BE CHECKED BY A QUALIFIED PERSON IN ACCORDANCE WITH THE CONTRACT DOCUMENTS OR THE APPLICABLE PERMIT, WHOEVER IS MORE STRINGENT, AND REPAIRED IN ACCORDANCE WITH THE FOLLOWING:

- ALL SITED AREAS SHALL BE CHECKED REGULARLY TO SEE THAT A GOOD STAND IS MAINTAINED. AREAS SHOULD BE FERTILIZED, WATERED, AND RESEED AS NEEDED.
- SILT FENCES SHALL BE REPAIRED TO THEIR ORIGINAL CONDITIONS IF DAMAGED. SEDIMENT SHALL BE REMOVED FROM THE SILT FENCE UNTIL IT REACHES ONE HALF THE HEIGHT OF THE SILT FENCE.
- THE CONSTRUCTION SITES SHALL BE MAINTAINED IN A CONDITION WHICH WILL PREVENT TRACKING OF SOIL OR MUD ONTO PUBLIC ROADS OR DRIVEWAYS. THIS MAY REQUIRE PERIODIC TOP DRESSING OF PAVED CONSTRUCTION PARKING AND STORAGE AREAS. THIS MAY REQUIRE PERIODIC TOP DRESSING FOR PARKING AND STORAGE. THIS MAY REQUIRE PERIODIC TOP DRESSING OF THE TEMPORARY PARKING AS CONDITIONS DEMAND.
- THE TEMPORARY PARKING AND STORAGE AREAS SHALL BE KEPT IN GOOD CONDITION (SUITABLE FOR PARKING AND STORAGE). THIS MAY REQUIRE PERIODIC TOP DRESSING OF THE TEMPORARY PARKING AS CONDITIONS DEMAND.
- OUTLET STRUCTURES SHALL BE MAINTAINED IN OPERATIONAL CONDITION ONE AT ALL TIMES. PRIOR TO LEAVING THE SITE, ALL VEHICLES SHALL BE CLEARED OF DEBRIS. ANY DEBRIS AND / OR SEDIMENT REACHING THE PUBLIC STREET SHALL BE CLEARED IMMEDIATELY BY A METEOD OTHER THAN FLUSHING.

BMP 1-SEQUENCE OF WORK

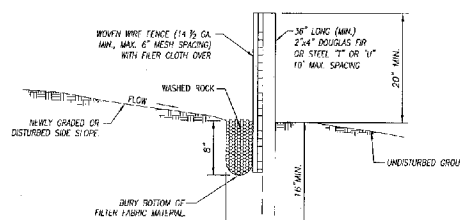
NOTE: UPON IMPLEMENTATION AND INSTALLATION OF THE FOLLOWING AREAS: BRICKS, PAVING, LAY DOWN, PORTABLE SANITARY UNIT, CONCRETE WASHOUT, FUEL AND MATERIAL STORAGE CONTAINERS, SOLID WASTE CONTAINERS, ETC., IMMEDIATELY NOTIFY THEM ON THE SITE MAPS AND NOTE ANY CHANGES IN LOCATION AS THEY OCCUR THROUGHOUT THE CONSTRUCTION PROCESS.

- INSTALL EROSION AND SEDIMENT CONTROLS (CLEAR ONLY THOSE AREAS NECESSARY TO INSTALL SILT FENCE).
- BEGIN CLEARING AND GRUBBING AND DEMOLITION OF THE SITE (STOCKPILE ALL TOPSOIL FOR LATER USE).
- TEMPORARY STABILIZATION OF AREAS NOT WORKING ON.
- BEGIN CONSTRUCTION OF WATERLINE.
- COMPLETE GRADING AND INSTALLATION OF PERMANENT STABILIZATION OVER ALL AREAS.
- REMOVE ALL REMAINING TEMPORARY EROSION AND SEDIMENT CONTROL DEVICES. STABILIZE ANY AREAS DISTURBED BY THE REMOVAL OF BMP'S.

EROSION AND SEDIMENT CONTROL BEST MANAGEMENT PRACTICES

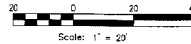
FROM THE BEST MANAGEMENT PRACTICES MANUAL, COUNTY OFFICE OF SUSTAINABLE BEST MANAGEMENT PRACTICES FOR ROAD CREW OPERATIONS, VOLUME 2.

- | | |
|------------|---------------------------------------|
| 1. BMP 1 | TIMING OF CONSTRUCTION |
| 2. BMP 2 | STAGING AREA |
| 3. BMP 3 | PRESERVATION OF EXISTING VEGETATION |
| 4. BMP 4 | STABILIZED CONSTRUCTION ENTRANCE/EXIT |
| 5. BMP 7 | DUST CONTROL |
| 6. BMP 8 | CHECK FOR MATERIALS AND EQUIPMENT |
| 7. BMP 9 | STOCKPILE AREA |
| 8. BMP 10 | SPILL PREVENTION AND CONTROL |
| 9. BMP 12 | GARBAGE ENCLOSURE WITH LD |
| 10. BMP 13 | HYDROSEEDING |
| 11. BMP 14 | PORTABLE SANITARY UNIT |
| 12. BMP 15 | CONCRETE WASHOUT |
| 13. BMP 20 | TOPSOILING |
| 14. BMP 21 | SEEDING |
| 15. BMP 30 | SILT FENCE |



SILT FENCE
NTS 1

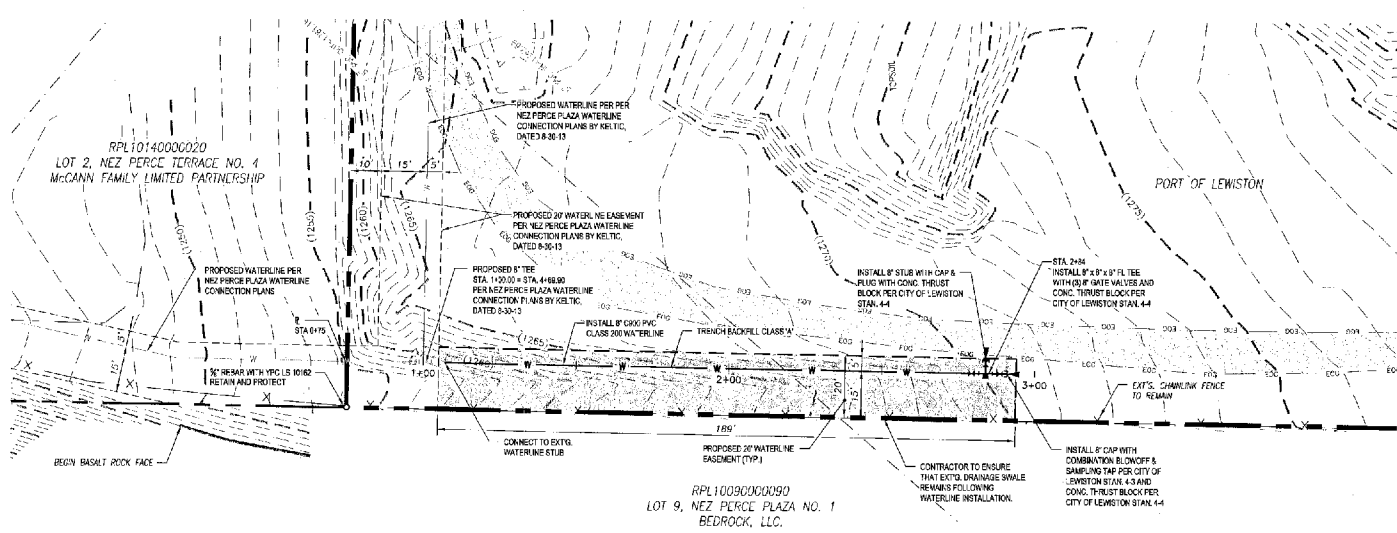
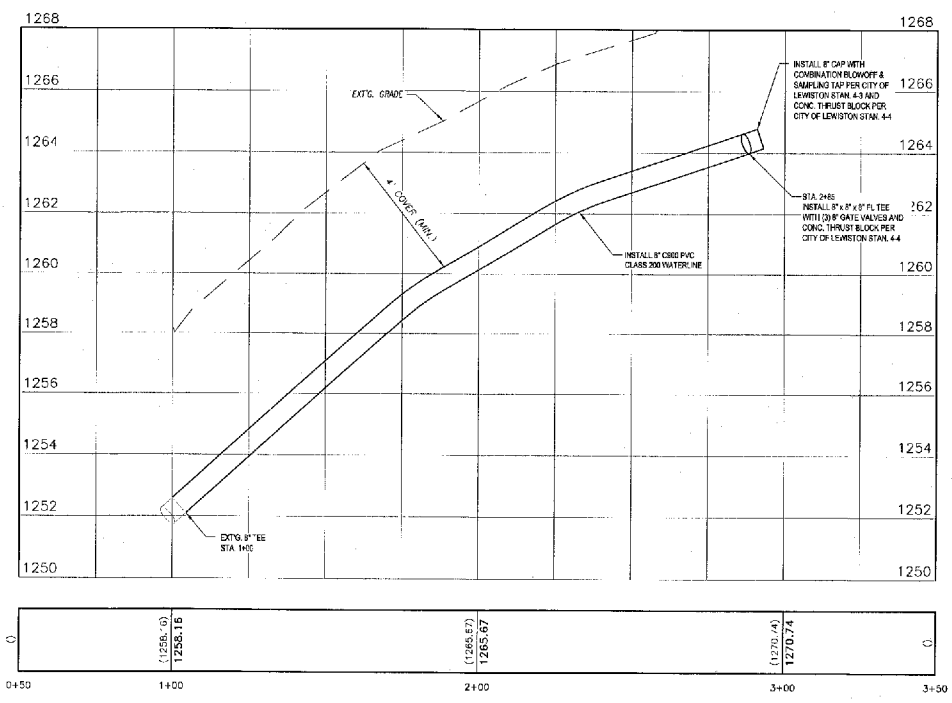
TEMPORARY EROSION & SEDIMENT CONTROL PLAN



KELTIC ENGINEERING, INC.
317 Adams Lane • Lewiston, Idaho 83501 • (208) 742-2425 • (208) 742-2105 fax
9400 North Norman Avenue, Ste. 200 • Spokane, WA 99218 • (509) 464-3000 • (509) 464-3006 fax
• Development • Planning • Construction Management

PROFESSIONAL ENGINEER
No. 6084
9/29/2004
IDaho Board of Engineering
REG. EXPIRES 12/31/2024

DRAWN BY: RGV
CHECKED BY: EPH
DATE: 12-23-13
LAST REV: 02-12-14 (LJW)
PROJECT NO: 13-1301
SHEET NO: 3 OF 4

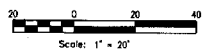


Know what's below.
Call before you dig.

CALL 2 BUSINESS DAYS IN ADVANCE BEFORE YOU DIG, GRADE, OR EXCAVATE FOR THE MARKING OF UNDERGROUND MEMBER UTILITIES



WATERLINE STA. 1+00 TO 2+90



NO.	DATE	BY	DESCRIPTION
1	12/12/14	JM	CITY OF LEWISTON, SEWER CONNECTIONS - 10-20-14

WATERLINE PLAN & PROFILE
PORT OF LEWISTON
 1626 6TH AVE. NORTH
 LEWISTON, ID. 83501

KELTIC ENGINEERING, INC.
 312 Adams Lane • Lewiston, Idaho 83501 • (208) 745-2175 • (208) 742-3136 fax
 9221 North Nampa Street, Ste 204 • Spokane, WA 99218 • (509) 464-2900 • (509) 464-0025 fax
 • Development • Planning • Design • Construction Management

DESIGNED BY:	ETH
DRAWN BY:	ETH
DATE:	12-23-13
LAST REV:	09-12-14 (JDM)
PROJECT NO.:	17-180
SHEET NO.:	4 OF 4

IMPROVEMENT PLANS

PORT OF LEWISTON WATERLINE EXTENSION LEWISTON, IDAHO 83501

NO.	DATE	BY	DESCRIPTION
1	12/17/14	EDP	CITY OF LEWISTON WATER DEPARTMENT - 12-09-14

COVER SHEET
PORT OF LEWISTON
1626 6TH AVE. NORTH
LEWISTON, ID 83501

KELTIC ENGINEERING, INC.
1626 North Newport Street, Ste. 231 • Spokane, WA 99218 • (509) 464-0096 fax
• Development • Planning • Design • Construction Management

APPROVED FOR CONSTRUCTION
8054
3/15/14
CITY OF LEWISTON
CONSTRUCTION DEPARTMENT

Approved for construction Plans 14-000001

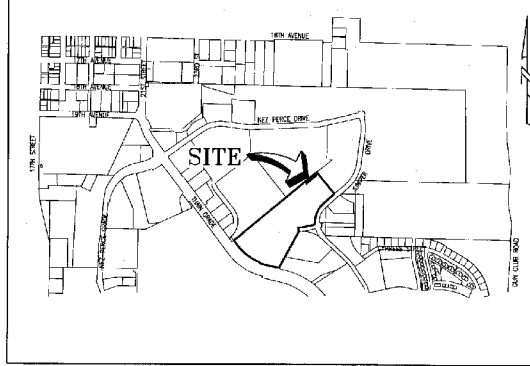
AGENCY TELEPHONE NUMBERS

CITY OF LEWISTON BUILDING INSPECTION CONTACT: JOHN SMITH	(509) 780-1835
CITY OF LEWISTON WATER & SEWER CONTACT: DAVE SIX	(208) 743-7461
CITY OF LEWISTON PUBLIC WORKS DEPT.	(208) 746-1316
AVISTA UTILITIES CONTACT: TED BOYLE	(208) 798-1473
CENTURY LINK CONTACT: TOM McGOVY	(208) 798-0807
CABLE ONE CONTACT: DAN SMITH	(208) 746-3325
UNDERGROUND UTILITY LOCATE (CALL 48 HOURS BEFORE YOU DIG)	1-800-342-1585 or call 811
DEVELOPER: PORT OF LEWISTON 1626 8TH AVE. NORTH LEWISTON, ID 83501 CONTACT: DAVID DOERINGSFELD	(208) 743-5531

LEGEND

---	EXISTING CONTOUR
○	EXISTING PROPERTY CORNER
○	EXISTING MONUMENT
▨	EXISTING A.C.
▨	EXISTING CONCRETE
---	EXISTING UNDERGROUND JOINT UTILITIES
SS	EXISTING SEWER
W	EXISTING WATER
SD	EXISTING STORM DRAIN
⊕	EXISTING SEWER MANHOLE
⊕	EXISTING STORM DRAIN MANHOLE
⊕	EXISTING GATE VALVE
⊕	EXISTING THRUST BLOCK
⊕	EXISTING FIRE HYDRANT
⊕	EXISTING STREET LIGHT
---	EDGE OF GRAVEL
---	PROPERTY LINE
---	EXISTING RIGHT-OF-WAY
---	CENTER LINE OF STREET
---	PROPOSED WATER SERVICE

VICINITY MAP



SITE PERMIT QUANTITIES

DOMESTIC WATER LINE 165 L.F.

APPLICABLE STANDARD DETAILS

- 1-4 BACKFILL CLASS A
- 1-8 IDENTIFYING TAPE DETAIL
- 4-1 POTABLE & NON-POTABLE WATERLINE SEPARATION
- 4-2 CAST IRON VALVE BOX WITH ASSEMBLY
- 1-8 THRUST BLOCK DETAIL

CONTRACTOR TO OBTAIN A CURRENT CITY OF LEWISTON STANDARDS BOOKLET FROM THE PUBLIC WORKS DEPARTMENT.

SHEET INDEX

SHEET 1	COVER SHEET
SHEET 2	CONSTRUCTION NOTES
SHEET 3	EROSION CONTROL PLAN
SHEET 4	WATERLINE PLAN & PROFILE

SPECIAL INSPECTIONS

ITEM	MATERIAL	TEST FREQUENCY	ACCEPTANCE	TEST FREQUENCY	INSPECTION	DATE	BY
1. ALL UTILITY TRENCHES & STRUCTURES							
2. BACKFILL	CLASS A	10% OF VOLUME	CLASS A	10% OF VOLUME	10% OF VOLUME		
3. IDENTIFYING TAPE	1/2" x 1/4" x 1/8" (min)	100% OF LENGTH	100% OF LENGTH	100% OF LENGTH	100% OF LENGTH		
4. POTABLE & NON-POTABLE WATERLINE SEPARATION	1/2" x 1/4" x 1/8" (min)	100% OF LENGTH	100% OF LENGTH	100% OF LENGTH	100% OF LENGTH		
5. CAST IRON VALVE BOX WITH ASSEMBLY	1/2" x 1/4" x 1/8" (min)	100% OF LENGTH	100% OF LENGTH	100% OF LENGTH	100% OF LENGTH		
6. THRUST BLOCK	1/2" x 1/4" x 1/8" (min)	100% OF LENGTH	100% OF LENGTH	100% OF LENGTH	100% OF LENGTH		
7. CONCRETE	CLASS A	10% OF VOLUME	CLASS A	10% OF VOLUME	10% OF VOLUME		
8. EROSION CONTROL PLAN							
9. WATERLINE PLAN & PROFILE							



CALL 2 BUSINESS DAYS IN ADVANCE BEFORE YOU DIG, GRADE, OR EXCAVATE FOR THE MARKING OF UNDERGROUND MEMBER UTILITIES

NOTE: 1) SPECIAL INSPECTIONS TO BE COORDINATED BY CONTRACTOR AND PERFORMED BY THE COMPANIES LISTED ABOVE. 2) OUR NOTICE TO THESE COMPANIES IS REQUIRED PRIOR TO INSPECTION. 3) A MINIMUM OF 1 CONCRETE TEST IS REQUIRED FOR EACH 100 YD. OR A MINIMUM OF 1 TEST PER DAY.

Plans Revised as per conditions listed 1/28/14 Permit center
Keltic Eng Response letter dated March 5, 2014

CONSTRUCTION NOTES

GENERAL NOTES

- 1) THE CONTRACTOR SHALL PAY FOR ALL NECESSARY PERMITS AND FEES.
- 2) THE CONTRACTOR SHALL INVESTIGATE ON SITE AND VERIFY ALL CONDITIONS AND DIMENSIONS OF THE PROJECT AND SHALL NOTIFY THE ENGINEER OF ANY DISCREPANCY IN THE CONTRACT DOCUMENTS REQUIRING MODIFICATION PRIOR TO PROCEEDING.
- 3) THE CONTRACTOR SHALL TAKE ALL NECESSARY PREVENTATIVE MEASURES TO PROTECT THE EXISTING IMPROVEMENTS ANY DAMAGE SHALL BE REPLACED AT NO COST TO THE OWNER.
- 4) THE CONTRACTOR SHALL COORDINATE THE WORK SCHEDULE SO AS TO HAVE A MINIMUM IMPACT ON THE EXISTING TRAFFIC. CONTRACTOR SHALL PROVIDE TRAFFIC CONTROL PER DAILY TRANSPORTATION AND CONSTRUCTION STANDARDS.
- 5) OWNER'S PROPERTY BOUNDARIES SHALL BE PROTECTED AT ALL TIMES AND THE CONTRACTOR SHALL OBTAIN THE SERVICES OF A PROFESSIONAL LAND SURVEYOR REGISTERED IN THE STATE OF IDAHO TO REPERMITS ALL CORNER UPON COMPLETION OF THE PROJECT. ALL EXISTING CORNERS OWNED BY THE CONTRACTOR OR OTHER ACTIVITY SHALL BE REPLACED BY A PROFESSIONAL LAND SURVEYOR.
- 6) ALL WORK SHALL CONFORM TO STATE AND LOCAL CODES AND CONFORM TO THE CITY OF LEWISTON STANDARD DRAWINGS AND STANDARD TECHNICAL SPECIFICATIONS.
- 7) SITE DISTANCES FOR ABUTTING PROPERTIES, DRIVEWAYS, AND IMPROVEMENTS MUST BE MAINTAINED.
- 8) IMPROVEMENTS CONSTRUCTION ON RIGHT-OF-WAY REQUIRES A STREET CLOSURE PERMIT OBTAINED AT THE CONSTRUCTION MANAGEMENT SECTION OF THE PUBLIC WORKS DEPARTMENT.
- 9) SPECIAL INSPECTION IS REQUIRED FOR SOIL COMPACTION AND WATER MAINS.
- 10) ALL WATER AND SEWER UTILITIES ARE TO BE CONSTRUCTED IN ACCORDANCE WITH STATE OF IDAHO STANDARDS FOR PUBLIC DRINKING WATER SYSTEMS.
- 11) WATER MAINS SHALL BE INSTALLED BY CONTRACTORS WITH EXPERIENCE INSTALLING PUBLIC WATER MAINS.
- 12) WATER MAINS SHALL BE LAID ONLY IN DEDICATED STREETS OR IN EASEMENTS WHICH HAVE BEEN GRANTED AND ACCEPTED BY THE CITY OF LEWISTON.
- 13) WATER PIPE SHALL BE P.V.C., CLASS 200 (MINIMUM) CONFORMING TO AWWA STANDARD C200.
- 14) WATER LINE FITTING SHALL BE CAST IRON OR DUCTILE IRON CONFORMING TO AWWA STANDARD C181.
- 15) THE CONTRACTOR SHALL PROVIDE LOCATE WIRE AND BURY TAPE IN PVC WATER MAIN TRENCH PER CITY OF LEWISTON STANDARD S-8.
- 16) THRUST BLOCKS SHALL CONFORM TO CITY OF LEWISTON STANDARD DETAIL 4-4.
- 17) GATE VALVES SHALL CONFORM TO AWWA C 616-66 RESILIENT SEATED GATE VALVES FOR WATER AND SEWAGE SYSTEMS AND SHALL BE IRON BODY BRONZE MOUNTED DOUBLE END WITH BRONZE YOKING AND DRIVING STUFFING BOX.
- 18) THE CONTRACTOR SHALL PROVIDE 4 FT MIN. COVER ON ALL WATER LINES AND PROVIDE 18" MINIMUM VERTICAL CLEARANCE BETWEEN POTABLE WATER LINE AND NON-POTABLE WATER LINE CROSSING FOR ALL CROSSINGS LESS THAN 18" OF VERTICAL CLEARANCE. NON-POTABLE OR POTABLE LINE MUST BE CASED BY A LARGER DIAMETER CASING PIPE FOR A HORIZONTAL DISTANCE OF TEN FEET ON BOTH SIDES OF THE CROSSING, WITH NO JOINTS, AS SHOWN ON CITY OF LEWISTON STANDARD DETAIL 4-2.
- 19) WATER LINE CONNECTIONS TO MAINS AND LATERALS SHALL BE LEFT UNCOVERED UNTIL AFTER THE CITY ENGINEER HAS INSPECTED AND APPROVED THE WORK. AFTER APPROVAL OF CONNECTION, THE TRENCH SHALL BE BACKFILLED AS SPECIFIED.
- 20) AN APPROVED BACKFLOW PREVENTION ASSEMBLY IS REQUIRED ON THE SUPPLY WATER LINE WHEN FILLING THE NEW WATER MAIN DURING UNREPERMITS AND FLUSHING. THE BACKFLOW PREVENTION ASSEMBLY AND SUPPLY PIPING MUST BE REMOVED DURING HYDROSTATIC PRESSURE TESTING.
- 21) PROPOSED WATER LINES SHALL BE HYDROSTATICALLY TESTED AS PER AWWA C200-93. TESTS SHALL BE 1/2 TIMES WORKING PRESSURE, WITH A MINIMUM OF 100 PSI. PRESSURE SHALL BE HELD FOR 2 HOURS WITH NO DROP IN PRESSURE. ENGINEER SHALL BE RESPONSIBLE FOR THIS FINAL CONNECTION AND THE CITY WILL INSPECT THIS WORK. BEFORE INSTALLATION, THE INTERIORS OF ALL PIPES AND FITTINGS USED TO MAKE THE CONNECTION MUST BE SWABBED OR SPRAYED WITH A 1% HYPOCHLORITE SOLUTION.
- 22) THE CONTRACTOR IS RESPONSIBLE FOR FLUSHING AND PRESSURE TESTING THE NEW WATER MAIN. CONTACT THE PLUMBING INSPECTOR AT 745-1114 FOR A PRESSURE TEST OF THE WATER DIVISION AT 745-1114. THESE TESTS MUST BE COMPLETED AND APPROVED BEFORE THE WATER DEPARTMENT WILL BEGIN DISINFECTION PROCEDURES.
- 23) UPON COMPLETION AND APPROVAL OF THE PRESSURE TEST BY THE PROJECT INSPECTOR, WHICH SHALL BE A PROFESSIONAL ENGINEER INSPECTING ALL WATER MAIN PROJECTS AND WHICH SHALL BE A FIRE DEPARTMENT INSPECTOR AND A CITY PLUMBING INSPECTOR FOR ALL FIVE LINE CONNECTIONS, THE INSPECTOR WILL NOTIFY THE CITY ENGINEERING DEPARTMENT (248-2116). THE ENGINEERING DEPT. WILL THEN NOTIFY THE CITY WATER DIVISION TO PROCEED WITH THE COORDINATION FOR THE DISINFECTION AND SAMPLING OF THE NEW WATER MAIN. A CONNECTION BLOW-OFF AND SAMPLING TAP IS REQUIRED.
- 24) THE NUMBER OF WATER SAMPLES TAKEN WILL DEPEND UPON THE LENGTH AND NUMBER OF BRANCHES OF THE NEW WATER MAIN. BUT A MINIMUM OF TWO SAMPLES MUST BE TAKEN. THESE SAMPLES SHALL BE TAKEN FROM EACH END OF THE NEW WATER MAIN. TWO CONSECUTIVE SAMPLES AT LEAST TWENTY-FOUR HOURS APART MUST BE REPORTED AND DISPLAY POSITIVE BACTERIOLOGICAL RESULTS. RESULTS FROM BACTERIOLOGICAL TESTING WILL BE AVAILABLE APPROXIMATELY 28 HOURS AFTER THE LAST SAMPLE IS TAKEN. THE CITY WILL CHARGE A FEE FOR THE CHLORINATION AND BACTERIAL TESTING.
- 25) UPON COMPLETION, CONTRACTOR SHALL PROVIDE AS BUILT DRAWINGS, COMPLETE WITH ELEVATIONS, TO THE ENGINEER OF RECORD TO BE APPROVED.

WATER NOTES

- 1) ALL WATER SYSTEMS ARE TO BE CONSTRUCTED IN ACCORDANCE WITH IDAPA AND ALL STATE CODES FOR PUBLIC DRINKING WATER SYSTEMS MUST BE FOLLOWED COUPLED WITH THE CITY OF LEWISTON WATER STANDARDS.
 - 2) CONTRACTORS SHALL BE RESPONSIBLE FOR COORDINATING WITH EXPERIENCED INSTALLING PUBLIC WATER MAINS AND APPROVED BY THE CITY OF LEWISTON.
 - 3) MAIN WATER LINES MUST BE LOADED AND PLACEMENT SHALL UNDO EXISTING EXCEPT WHEN NECESSITATED BY LAND SHORINGS. GASKETS SHALL BE A MINIMUM OF 20". WATER LINES SHALL BE BURIED IN THE CITY OF LEWISTON.
 - 4) WATER PIPE SHALL BE P.V.C., CLASS 150 (MINIMUM) CONFORMING TO AWWA STANDARD C150.
 - 5) WATER LINE FITTINGS SHALL BE CAST IRON OR DUCTILE IRON CONFORMING TO AWWA STANDARD C181.
 - 6) PRESSURE REDUCING VALVES ARE REQUIRED ON ALL SERVICE LINES.
 - 7) INCLUDE ALL MATERIALS EXCEPT THE METER WHICH SHALL BE PROVIDED BY THE CITY. METERS SHALL BE PLACED TO AVOID CONFLICT WITH OTHER UTILITIES DRIVEWAY LOCATIONS, AND SHALL BE IN THE RIGHT OF WAY.
 - 8) BACKFLOW ASSEMBLIES ARE REQUIRED ON ALL IRIGATION SYSTEMS AND OTHER IDENTIFIED HAZARDS SUCH AS PUDWA.
 - 9) BACKFLOW ASSEMBLIES SHALL BE INSTALLED AS PER STANDARDS AND SHALL BE ACCESSIBLE TO PERMIT TESTING.
 - 10) HYDRANTS SHALL BE SPACED AT A MAXIMUM OF 500 IN RESIDENTIAL AND LOW COMMERCIAL AREAS. ALL HYDRANTS SHALL HAVE VALVES ON THE HYDRANT BRANCH LINE. HYDRANTS SHALL HAVE TWO, 2" PORTS AND ONE 4" STEAMER PORT.
 - 11) ALL HYDRANTS SHALL BE THRUST BLOCKED OR RETAINED AND ALL FITTINGS SHALL BE THRUST BLOCKED. THRUST BLOCKS SHALL CONFORM TO CITY OF LEWISTON STANDARD DETAIL 4-3.
 - 12) FIRE HYDRANTS SHALL CONFORM TO AWWA C552 AND SHALL BE WATERLOG PROOF OR MEULIER CENTURIUM. HYDRANTS SHALL BE PROTECTED THAT THE DIRECTION OF FEMER CONNECTION MAY BE ROTATED TO FACE THE ROADWAY. A 6 INCH MECHANICAL JOINT CONNECTION WITH LOGS AND SHACKLE RODS IS TO BE USED. A GATE VALVE SHALL BE INSTALLED AT EACH HYDRANT AS SHOWN ON STANDARD DETAIL 4-12.
 - 13) ALL HYDRANTS USED FOR THIS PROJECT SHALL BE PROVIDED WITH A 5 INCH INTERNAL HYDRANT STORZ ADAPTOR. ALL NOZZLES SHALL BE PROVIDED WITH THE STORZ END CAP WITH SUCTION SEAL AND AIRCRAFT CABLE.
 - 14) HYDRANTS SHALL HAVE A MINIMUM 8" SUPPLY LINE.
 - 15) PRESSURE REDUCING FITTINGS MAY BE REQUIRED DUE TO ELEVATION, DIFFERENT PRESSURE ZONES, ETC.
 - 16) GATE VALVES SHALL CONFORM TO AWWA C 616-66 RESILIENT SEATED GATE VALVES FOR WATER AND SEWAGE SYSTEMS AND SHALL BE IRON BODY BRONZE MOUNTED DOUBLE END WITH BRONZE YOKING AND DRIVING STUFFING BOX.
 - 17) VALVES SHALL BE PLACED ON ALL BRANCHES OF TRENCHES OR CROSSINGS. A VALVE IS REQUIRED AT A MINIMUM OF EVERY 1000 OF MAIN WATER LINE.
 - 18) THE CONTRACTOR SHALL PROVIDE 4 FT MIN. COVER ON ALL WATER LINES AND PROVIDE 18" MINIMUM VERTICAL CLEARANCE BETWEEN POTABLE WATER LINE AND NON-POTABLE WATER LINE CROSSINGS. FOR ALL CROSSINGS LESS THAN 18" OF VERTICAL CLEARANCE, NON-POTABLE OR POTABLE LINE MUST BE CASED BY A LARGER DIAMETER CASING PIPE FOR A HORIZONTAL DISTANCE OF TEN FEET ON BOTH SIDES OF THE CROSSING, WITH NO JOINTS, AS SHOWN ON CITY OF LEWISTON STANDARD DETAIL 4-1.
 - 19) PROPOSED WATER LINES SHALL BE HYDROSTATICALLY TESTED AS PER AWWA C200-93. TESTS SHALL BE 1/2 TIMES WORKING PRESSURE, WITH A MINIMUM OF 100 PSI. PRESSURE SHALL BE HELD FOR 2 HOURS WITH NO DROP IN PRESSURE. ENGINEER SHALL BE RESPONSIBLE FOR THIS FINAL CONNECTION AND THE CITY WILL INSPECT THIS WORK. BEFORE INSTALLATION, THE INTERIORS OF ALL PIPES AND FITTINGS USED TO MAKE THE CONNECTION MUST BE SWABBED OR SPRAYED WITH A 1% HYPOCHLORITE SOLUTION.
 - 20) THE CONTRACTOR IS RESPONSIBLE FOR FLUSHING AND PRESSURE TESTING THE NEW WATER MAIN. CONTACT THE PLUMBING INSPECTOR AT 745-1114 FOR A PRESSURE TEST OF THE WATER DIVISION AT 745-1114. THESE TESTS MUST BE COMPLETED AND APPROVED BEFORE THE WATER DEPARTMENT WILL BEGIN DISINFECTION PROCEDURES.
 - 21) UPON COMPLETION AND APPROVAL OF THE PRESSURE TEST BY THE PROJECT INSPECTOR, WHICH SHALL BE A PROFESSIONAL ENGINEER INSPECTING ALL WATER MAIN PROJECTS AND WHICH SHALL BE A FIRE DEPARTMENT INSPECTOR AND A CITY PLUMBING INSPECTOR FOR ALL FIVE LINE CONNECTIONS, THE INSPECTOR WILL NOTIFY THE CITY ENGINEERING DEPARTMENT (248-2116). THE ENGINEERING DEPT. WILL THEN NOTIFY THE CITY WATER DIVISION TO PROCEED WITH THE COORDINATION FOR THE DISINFECTION AND SAMPLING OF THE NEW WATER MAIN. A CONNECTION BLOW-OFF AND SAMPLING TAP IS REQUIRED.
 - 22) THE NUMBER OF WATER SAMPLES TAKEN WILL DEPEND UPON THE LENGTH AND NUMBER OF BRANCHES OF THE NEW WATER MAIN. BUT A MINIMUM OF TWO SAMPLES MUST BE TAKEN. THESE SAMPLES SHALL BE TAKEN FROM EACH END OF THE NEW WATER MAIN. TWO CONSECUTIVE SAMPLES AT LEAST TWENTY-FOUR HOURS APART MUST BE REPORTED AND DISPLAY POSITIVE BACTERIOLOGICAL RESULTS. RESULTS FROM BACTERIOLOGICAL TESTING WILL BE AVAILABLE APPROXIMATELY 28 HOURS AFTER THE LAST SAMPLE IS TAKEN. THE CITY WILL CHARGE A FEE FOR THE CHLORINATION AND BACTERIAL TESTING.
 - 23) UPON COMPLETION, CONTRACTOR SHALL PROVIDE AS BUILT DRAWINGS, COMPLETE WITH ELEVATIONS, TO THE ENGINEER OF RECORD TO BE APPROVED.
 - 24) IF COMBUSTIBLE BUILDING MATERIALS ARE USED (INCLUDING FRAMING) THE WATER SUPPLY (INCLUDING MAINS AND HYDRANTS) SHALL BE DESIGNED, INSTALLED, TESTED AND APPROVED BY THE FIRE DEPARTMENT PRIOR TO STOCKPILING COMBUSTIBLE BUILDING MATERIALS.
 - 25) WATER SUPPLY SYSTEMS FOR PHASED CONSTRUCTION SHALL PROVIDE REQUIRED FIVE FLOWS AT ALL PHASES.
 - 26) TREES, PLANTS, TREES AND/OR SHRUBS SHALL NOT BE PLACED OR KEPT NEAR FIRE HYDRANTS. FIRE DEPARTMENT INLET CONNECTIONS OR FIRE PROTECTION SYSTEM CONTROL VALVES IN A MANNER THAT WOULD PREVENT SUCH EQUIPMENT FROM BEING IMMEDIATELY ACCESSIBLE BY THE FIRE DEPARTMENT. IFC 608.4.
 - 27) WATER LINE CONNECTIONS TO MAINS AND LATERALS SHALL BE LEFT UNCOVERED UNTIL AFTER THE CITY ENGINEER HAS INSPECTED AND APPROVED THE WORK. AFTER APPROVAL OF CONNECTION, THE TRENCH SHALL BE BACKFILLED AS SPECIFIED.
- CITY OF LEWISTON'S NEW WATER MAIN CONSTRUCTION PROCEDURES:**
- 1) NEW WATER MAINS THAT ARE INSTALLED, WHETHER EXPANDING A DISTRIBUTION SYSTEM OR ADDING A FIRE LINE, MUST BE PHYSICALLY SEPARATED FROM THE EXISTING SYSTEM UNTIL SATISFACTORY FLUSHING, PRESSURE TESTING, DISINFECTION, AND BACTERIOLOGICAL SAMPLING IS COMPLETED. THE NEW WATER MAIN MUST BE CONSIDERED CONTAMINATED AND THE CHLORINE CONCENTRATION USED FOR DISINFECTION (MINIMUM 24 mg/L) MAKES THE WATER NON-POTABLE.
 - 2) THE CITY WILL PERFORM THE TAP ONLY FOR THESE NEW WATER MAIN CONNECTIONS AT A RATE DETERMINED ON EACH INDIVIDUAL TAP. THE CONTRACTOR IS RESPONSIBLE FOR COMPLETING THIS WORK. THE CITY WILL FURNISH ALL MATERIALS AND SUPPLY AN APPROVED BACKFLOW PREVENTION ASSEMBLY IS REQUIRED ON THE SUPPLY WATER LINE WHEN FILLING THE NEW WATER MAIN DURING DISINFECTION AND FLUSHING. THE BACKFLOW PREVENTION ASSEMBLY AND SUPPLY PIPING MUST BE REMOVED DURING HYDROSTATIC PRESSURE TESTING.
 - 3) AFTER SATISFACTORY BACTERIOLOGICAL SAMPLE RESULTS ARE OBTAINED FROM THE NEW WATER MAIN, A SECTION OF CONNECTING PIPE MUST BE INSTALLED BETWEEN THE NEW SECTION AND THE EXISTING SYSTEM. THE CONTRACTOR WILL BE RESPONSIBLE FOR THIS WORK. THE CITY WILL INSPECT THIS WORK. BEFORE INSTALLATION, THE INTERIORS OF ALL PIPES AND FITTINGS USED TO MAKE THE CONNECTION MUST BE SWABBED OR SPRAYED WITH A 1% HYPOCHLORITE SOLUTION.
 - 4) THE CONTRACTOR IS RESPONSIBLE FOR FLUSHING AND PRESSURE TESTING THE NEW WATER MAIN. CONTACT THE PLUMBING INSPECTOR AT 208-745-1114 FOR A PRESSURE TEST OF THE WATER DIVISION AT 208-745-1114. THESE TESTS MUST BE COMPLETED AND APPROVED BEFORE THE FIRE DEPARTMENT WILL BEGIN DISINFECTION PROCEDURES.
 - 5) UPON COMPLETION AND APPROVAL OF THE PRESSURE TEST BY THE PROJECT INSPECTOR, WHICH SHALL BE A PROFESSIONAL ENGINEER INSPECTING ALL WATER MAIN PROJECTS AND WHICH SHALL BE A FIRE DEPARTMENT INSPECTOR AND A CITY PLUMBING INSPECTOR FOR ALL FIVE LINE CONNECTIONS, THE INSPECTOR WILL NOTIFY THE CITY ENGINEERING DIVISION. THE ENGINEERING DIVISION WILL THEN NOTIFY THE CITY WATER DIVISION TO PROCEED WITH THE COORDINATION FOR THE DISINFECTION AND SAMPLING OF THE NEW WATER MAIN. NOTE: NO HOSES OR FIRE HYDRANT SHALL BE USED IN COLLECTION OF SAMPLES. A CONNECTION BLOW-OFF AND SAMPLING TAP IS REQUIRED. THE DISINFECTION AND BACTERIOLOGICAL TESTING OF THE NEW MAIN SHALL ADHERE TO AWWA STANDARDS (AWWA C651-99).
 - 6) THE NUMBER OF WATER SAMPLES TAKEN WILL DEPEND UPON THE LENGTH AND NUMBER OF BRANCHES OF THE NEW MAIN, BUT A MINIMUM OF TWO SAMPLES MUST BE TAKEN. THESE SAMPLES SHALL BE TAKEN FROM EACH END OF THE NEW WATER MAIN. TWO CONSECUTIVE SAMPLES AT LEAST TWENTY-FOUR HOURS APART MUST BE REPORTED AND DISPLAY POSITIVE BACTERIOLOGICAL RESULTS. RESULTS FROM BACTERIOLOGICAL TESTING WILL BE AVAILABLE APPROXIMATELY 28 HOURS AFTER THE LAST SAMPLE IS TAKEN. THE CITY WILL CHARGE A FEE FOR CHLORINATION AND BACTERIAL TESTING.

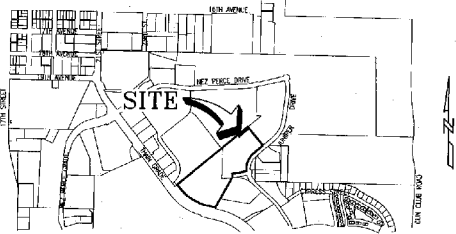
DATE	BY	DESCRIPTION
12/17/14	AM	3RD OF LEXINGTON WATER COMMENTS - 02. 20. 14

CONSTRUCTION NOTES
PORT OF LEWISTON
 1626 6TH AVE. NORTH
 LEWISTON, ID 83501

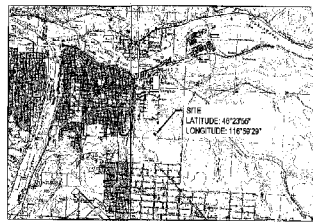
Keltic Engineering, Inc.
 315 Adams Lane • Lewiston, Idaho 83501 • (208) 742-2115 • FAX (208) 742-2144
 942 North Nevada Street, Ste. 208 • Spokane, WA 99210 • (509) 655-3000 • (509) 655-0010
 • Development • Planning • Design • Construction Management



DATE	DESIGNED BY
02-12-14	EPH
DATE	02-12-14
DATE	02-12-14 (LWS)
PROJECT NO.	3-1-301
SHEET NO.	2 OF 4



Section 5, Twp. 35 N, Rng. 5 W, B.M.
SITE LOCATION MAP
Not to Scale



USGS QUADRANGLE MAP
LEWISTON ORCHARDS NORTH
Not to Scale

ACREAGE SUMMARY	
SITE AREA	18.06 AC ±
DISTURBED AREA	0.09 AC ±
IMPERVIOUS AREA	0.12 AC ±
PERVIOUS AREA	17.84 AC ±
TOTAL IMPERVIOUS AREA AT COMPLETION	0.12 AC ±
PERVIOUS / SEEDED AREA AT COMPLETION	0.09 AC ±

BENCHMARK DATUM

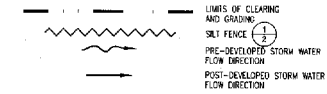
NEZ HERGEBRIDGE C
BRASS CAP
STA. 34-0451
ELEV. = 1127.7'
870' WEST OF INTERSECTION
WITH JUNCTION DRIVE

STORMWATER OUTFLOW

INFILTRATES INTO GROUNDWATER STRATA OR
RUNOFF THROUGH EXISTING DRAINAGEWAYS

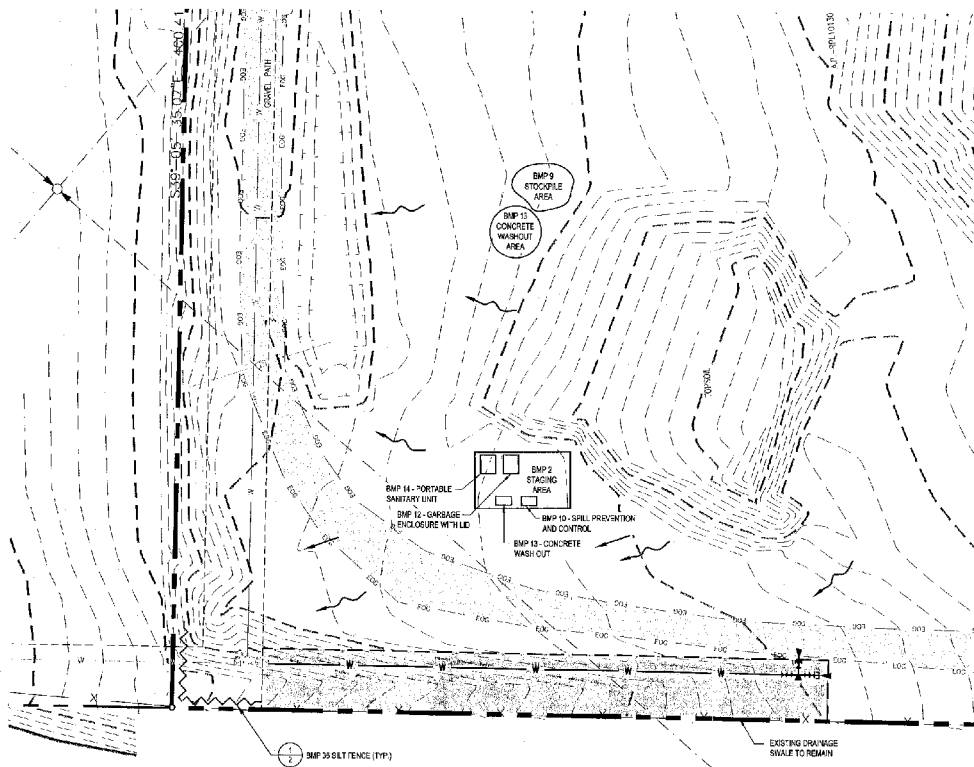
CLEARWATER RIVER - 1.3 ± MILES NORTH

LEGEND



NO.	DATE	BY	DESCRIPTION
1	12/27/24	JON	CITY OF LEWISTON GROW COMMUNITY - 79-045-1-4

EROSION CONTROL PLAN
PORT OF LEWISTON
1626 6TH AVE. NORTH
LEWISTON, ID. 83701



EROSION CONTROL NOTES

- APPROVAL OF THE EROSION CONTROL ELEMENT DOES NOT CONSTITUTE AN APPROVAL OF PERMANENT SITE OR DRAINAGE DESIGN.
- ALL CONTRACTORS SHALL BE INVOLVED WITH STORM WATER POLLUTION PREVENTION SHALL OBTAIN A COPY OF THE STORM WATER POLLUTION PREVENTION PLAN AND BECOME FAMILIAR WITH THEIR CONTENTS.
- IMPERVIOUS CONSTRUCTION REQUIREMENTS REPLACEMENT AND UPGRADEING OF ALL EROSION CONTROL MEASURES IS THE RESPONSIBILITY OF THE CONTRACTOR UNTIL ALL CONSTRUCTION IS COMPLETED AND APPROVED AND ALL VEGETATION/LANDSCAPING IS ESTABLISHED.
- THE EROSION CONTROL FACILITIES ON THIS PLAN MUST BE CONSTRUCTED IN CONJUNCTION WITH ALL CLEARING AND GRADING ACTIVITIES TO INSURE THAT SEDIMENT LOADS DO NOT ENTER THE DRAINAGE SYSTEM OR VIOLATE APPLICABLE WATER STANDARDS.
- ALL EROSION CONTROL FACILITIES SHALL BE INSPECTED ONLY BY THE CONTRACTOR AND MAINTAINED AS NECESSARY TO ENSURE THEIR CONTINUED EFFECTIVENESS.
- SUFFICIENT OIL AND GREASE ABSORBING MATERIALS SHALL BE MAINTAINED ON SITE OR READILY AVAILABLE TO CONTAIN AND CLEANUP FUEL OR CHEMICAL SPILLS AND LEAKS.
- ALL WASH WATER (CONCRETE, TRENCH, VEHICLE CLEANING, EQUIPMENT CLEANING, ETC.) SHALL BE DETAINED AND PROPERLY TREATED OR DISPOSED.
- DURING INACTIVE PERIODS ON THE SITE, THE CONTRACTOR MUST PROTECT AND MAINTAIN EROSION CONTROL FACILITIES DURING A MONTH OF WINTER FOLLOWING A STORM.
- FILTER FABRIC SHALL BE PLACED UNDER THE GRATES OF NEWLY INSTALLED CATCH BASINS UNTIL PAVING OPERATIONS ARE COMPLETE. ALL CATCH BASINS AND CONCRETE LINES SHALL BE CLEANED PRIOR TO PAVING. THE CLEANING OPERATIONS SHALL NOT FLUSH SEDIMENT LOADS INTO THE DOWNSTREAM SYSTEM.
- STABILIZED CONCRETION DISTANCES SHALL BE INSTALLED AT THE BEGINNING OF CONSTRUCTION AND SHALL BE MAINTAINED FOR THE DURATION OF THE PROJECT. ADDITIONAL MEASURES MUST BE TAKEN BY THE CONTRACTOR, IF NECESSARY, TO ENSURE THAT ALL EXISTING PAVED AREAS ARE KEPT CLEAR FOR THE DURATION OF THE PROJECT.
- SEED, MULCH, AND FERTILIZER ALL DISTURBED GROUND NOT REQUIRING HARD SURFACE AT THE EARLIEST POSSIBLE TIME. USE SEED MIXES AND RATES AS PER LANDSCAPE DESIGNER.
- EROSION CONTROL MEASURES MUST BE USED TO PREVENT CONSTRUCTION TO REDUCE OR ELIMINATE BLOWN DUST, EXCESSIVE RUNOFF, AND SOIL EROSION ACROSS PROPERTY LINES AND INTO STREETS AND RIGHT-OF-WAY. AND TO ELIMINATE TRACKING SOIL AND MUD ONTO STREETS FROM CONSTRUCTION EQUIPMENT AND VEHICLES. THE USE OF MOTOR OILS AND OTHER PETROLEUM BASED OR TOXIC LIQUIDS FOR DUST SUPPRESSION OPERATIONS IS PROHIBITED.
- MATERIAL TRACKED ONTO THE ROADWAY CANNOT BE WASHED INTO THE STORM SYSTEM. STREETS SHALL BE SWEEP PRIOR TO A STORM EVENT OR AT THE REQUEST OF THE ENGINEER OR THE CITY.
- ALL DISTURBED AREAS THAT WILL BE INACTIVE FOR 10 DAYS DURING GROW SEASON (JULY 1 - SEPTEMBER 30) AND 5 DAYS DURING WET SEASON (OCTOBER 1 - JUNE 30) OR MORE MUST BE STABILIZED TEMPORARILY WITH THE USE OF SEEDING/STABILIZING MIXTURES. GRASS, SOYAN VARIETIES, STRAW HAY MULCH, WOOD CHIPPED FIBERS, TACKPAPER, NETTING OR BLANKETS AS SHOWN ON SITE MAP.
- DESTABILIZED PORTIONS OF THE SITE WHERE CONSTRUCTION ACTIVITY HAS PERMANENTLY STOPPED SHALL BE PERMANENTLY STABILIZED AS SHOWN ON THE PLANS. THESE AREAS SHALL BE SEED, SOODED, AND OR REVEGETED NO LATER THAN 30 DAYS AFTER THE LAST CONSTRUCTION ACTIVITY OCCURRING IN THESE AREAS. REFER TO THE GRADING PLAN AND CONSTRUCTION PLAN.
- ALL MATERIALS SPILLED, DROPPED, WASHED, OR TRACKED FROM VEHICLES ONTO ROADWAYS OR INTO STORM DRAINAGE MUST BE REMOVED IMMEDIATELY.
- CONTRACTORS OR SUBCONTRACTORS WILL BE RESPONSIBLE FOR REMOVING SEDIMENT IN THE DETENTION POND AND ANY SEDIMENT THAT MAY HAVE COLLECTED IN THE STORM DRAINAGE SYSTEMS IN CONJUNCTION WITH STABILIZATION OF THE SITE.
- ON-SITE & OFF-SITE SOIL STOCKPILE AND BOROEN AREAS SHALL BE PROTECTED FROM EROSION AND SEDIMENTATION THROUGH IMPLEMENTATION OF BEST MANAGEMENT PRACTICES. STOCKPILE AND AREA LOCATIONS SHALL BE NOTED ON THE SITE MAP AND PERMITTED IN ACCORDANCE WITH GENERAL PERMIT REQUIREMENTS.
- SILTS SHALL BE LEFT IN A ROUGH ENDED CONDITION DURING THE GRADING PHASE TO REDUCE RUNOFF VELOCITIES AND EROSION.
- DUE TO THE GRADE CHANGES DURING THE DEVELOPMENT OF THE PROJECT, THE CONTRACTOR SHALL BE RESPONSIBLE FOR ADJUSTING THE EROSION CONTROL MEASURES (SILT FENCES, ETC.) TO PREVENT EROSION AND POLLUTANT ADVANCEMENTS.
- GENERAL CONTRACTORS TO DISCLOSE IDENTIFY AREAS ON THE SITE MAPS, INSIDE OF THE LIMITS OF DISTURBANCE, FOR WASTE DISPOSAL AND HAZARDOUS MATERIALS STORAGE. REFER TO THE SWPPP FOR REPORTABLE SPILL QUANTITIES OF PETROLEUM PRODUCTS AND/OR HAZARDOUS WASTES.

BMP MAINTENANCE EROSION NOTES

ALL MEASURES STATED ON THIS EROSION AND SEDIMENT CONTROL PLAN AND IN THE STORM WATER POLLUTION PREVENTION EXPLANATION, SHALL BE MAINTAINED IN FULLY FUNCTIONAL CONDITION UNTIL NO LONGER REQUIRED FOR A COMPLETED PHASE OF WORK OR FINAL STABILIZATION OF THE SITE. ALL EROSION AND SEDIMENTATION CONTROL MEASURES SHALL BE CHECKED BY A QUALIFIED PERSON IN ACCORDANCE WITH THE CONTRACT DOCUMENTS OR THE APPLICABLE PERMIT, WHOEVER IS MORE STRINGENT, AND REPAIRED IN ACCORDANCE WITH THE FOLLOWING:

- ALL SITED AREAS SHALL BE CHECKED REGULARLY TO SEE THAT A GOOD STAND IS MAINTAINED. AREAS SHOULD BE FERTILIZED, WATERED, AND RESEED AS NEEDED.
- SILT FENCES SHALL BE REPAIRED TO THEIR ORIGINAL CONDITIONS IF DAMAGED. SEDIMENT SHALL BE REMOVED FROM THE SILT FENCE UNTIL IT REACHES ONE HALF THE HEIGHT OF THE SILT FENCE.
- THE CONSTRUCTION SITES SHALL BE MAINTAINED IN A CONDITION WHICH WILL PREVENT TRACKING OF SOIL ONTO PUBLIC ROADS/RIGHT-OF-WAY. THIS MAY REQUIRE PERIODIC TOP DRESSING OF PAVING.
- THE TEMPORARY PARKING AND STORAGE AREA SHALL BE KEPT IN GOOD CONDITION (SUITABLE FOR PARKING AND STORAGE). THIS MAY REQUIRE PERIODIC TOP DRESSING OF THE TEMPORARY PAVING AS CONDITIONS DEMAND.
- OUTLET STRUCTURES SHALL BE MAINTAINED IN OPERATIONAL CONDITION ONE AT ALL TIMES. PRIOR TO LEAVING THE SITE, ALL VEHICLES SHALL BE CLEARED OF DEBRIS. ANY DEBRIS AND FOR SEDIMENT REACHING THE PUBLIC STREET SHALL BE CLEARED IMMEDIATELY BY A METEOD OTHER THAN FLUSHING.

BMP 1-SEQUENCE OF WORK

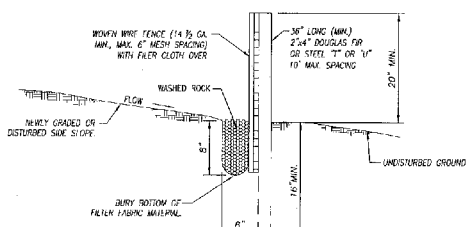
NOTE: UPON IMPLEMENTATION AND INSTALLATION OF THE FOLLOWING AREAS: BRICKS, PAVING, LAY DOWN PORTABLE SANITARY UNIT, CONCRETE WASHOUT, FUEL AND MATERIAL STORAGE CONTAINERS, SOLID WASTE CONTAINERS, ETC., IMMEDIATELY NOTIFY THEM ON THE SITE MAPS AND NOTE ANY CHANGES IN LOCATION AS THEY OCCUR THROUGHOUT THE CONSTRUCTION PROCESS.

- INSTALL EROSION AND SEDIMENT CONTROLS (CLEAR ONLY THOSE AREAS NECESSARY TO INSTALL SILT FENCE).
- BEGIN CLEARING AND GRUBBING AND DEMOLITION OF THE SITE (STOCKPILE ALL TOPSOIL FOR LATER USE).
- TEMPORARY STABILIZATION OF AREAS NOT WORKING ON.
- BEGIN CONSTRUCTION OF WATERLINE.
- COMPLETE GRADING AND INSTALLATION OF PERMANENT STABILIZATION OVER ALL AREAS.
- REMOVE ALL REMAINING TEMPORARY EROSION AND SEDIMENT CONTROL DEVICES. STABILIZE ANY AREAS DISTURBED BY THE REMOVAL OF BMP'S.

EROSION AND SEDIMENT CONTROL BEST MANAGEMENT PRACTICES

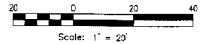
FROM THE CONSTRUCTION COUNTY OFFICE OF SUSTAINABLE BEST MANAGEMENT PRACTICES FOR ROAD CREW OPERATIONS, VOLUME 2.

- | BMP # | DESCRIPTION | TIMING OF CONSTRUCTION |
|-------|-------------|---------------------------------------|
| 1 | BMP 1 | STAGING AREA |
| 2 | BMP 2 | PRESERVATION OF EXISTING VEGETATION |
| 3 | BMP 3 | STABILIZED CONSTRUCTION ENTRANCE/EXIT |
| 4 | BMP 4 | DUST CONTROL |
| 5 | BMP 5 | CHECK FOR MATERIALS AND EQUIPMENT |
| 6 | BMP 6 | STOCKPILE AREA |
| 7 | BMP 7 | SPILL PREVENTION AND CONTROL |
| 8 | BMP 8 | GARBAGE ENCLOSURE WITH LD |
| 9 | BMP 9 | HYDROLOGIC |
| 10 | BMP 10 | TOPSOIL/MULCH |
| 11 | BMP 11 | SEEDING |
| 12 | BMP 12 | SEEDING |
| 13 | BMP 13 | SEEDING |
| 14 | BMP 14 | SEEDING |
| 15 | BMP 15 | SILT FENCE |



SILT FENCE
NTS 1

TEMPORARY EROSION & SEDIMENT CONTROL PLAN



Scale: 1" = 20'

KELTIC ENGINEERING, INC.
317 Adams Lane • Lewiston, Idaho 83501 • (208) 742-2425 • (208) 742-2105 fax
9400 North Nampa Street, Ste. 200 • Spokane, WA 99218 • (509) 464-3000 • (509) 464-3006 fax
• Development • Planning • Construction Management

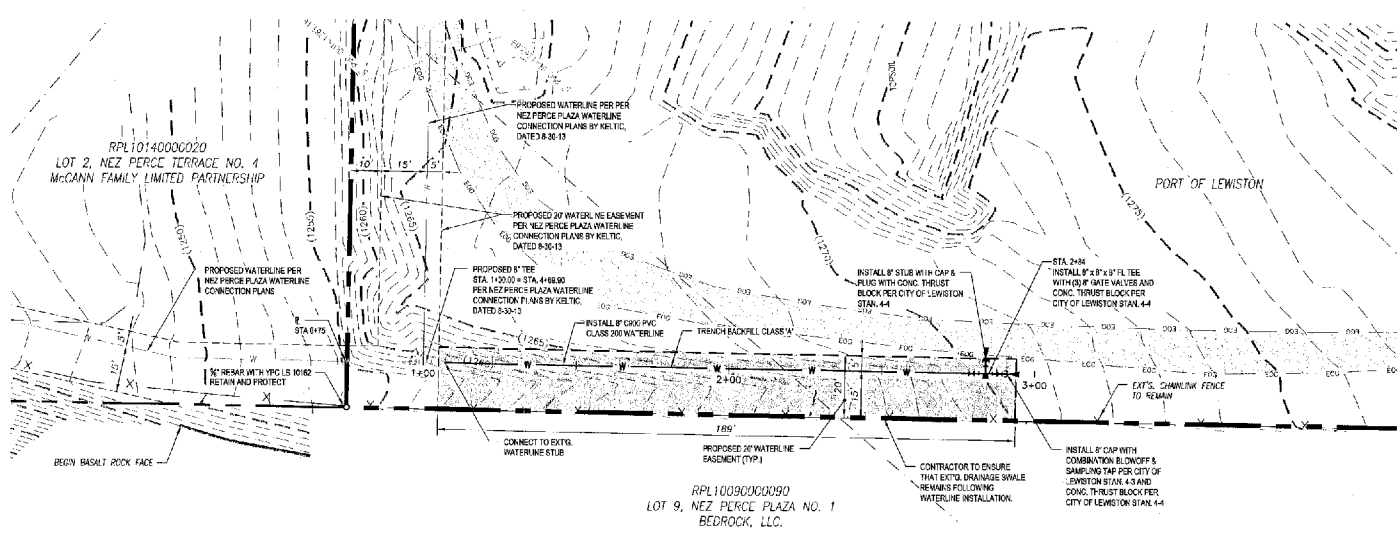
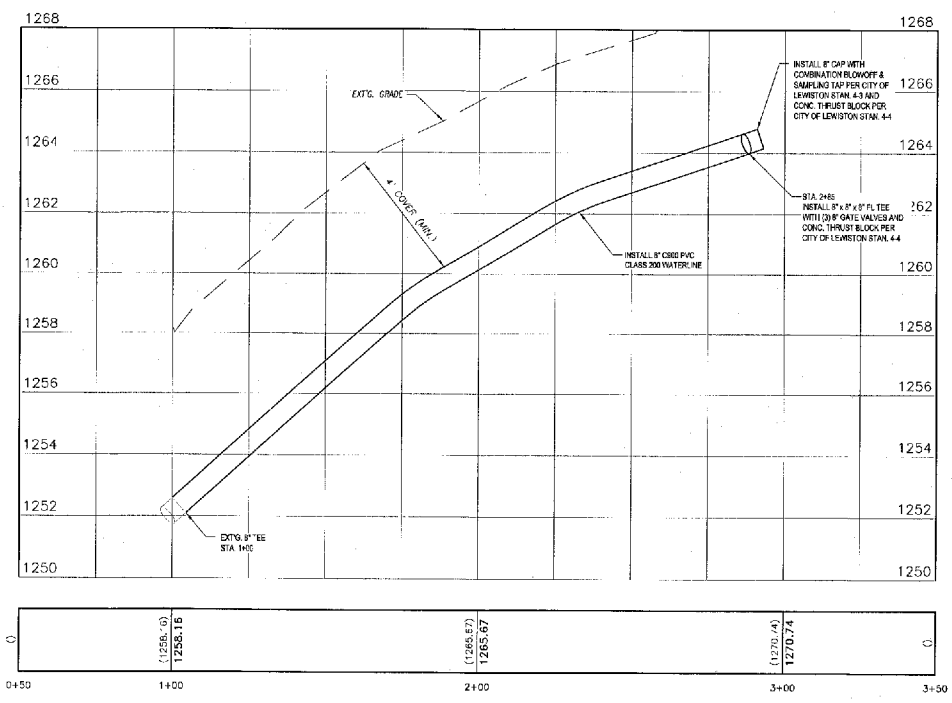
PROFESSIONAL ENGINEER
No. 6084
9/29/2004
IDaho Board of Engineering
REG. NO. 6084

DRAWN BY: RGV
CHECKED BY: EPH

DATE: 12-23-13
LAST REV: 02-12-14 (L730)

PROJECT NO: 13-1301

SHEET NO: 3 OF 4

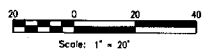


Know what's below.
Call before you dig.

CALL 2 BUSINESS DAYS IN ADVANCE BEFORE YOU DIG, GRADE, OR EXCAVATE FOR THE MARKING OF UNDERGROUND MEMBER UTILITIES



WATERLINE STA. 1+00 TO 2+90



NO.	DATE	BY	DESCRIPTION
1	12/12/14	JM	CITY OF LEWISTON, SEWER CONNECTIONS - 10-20-14

WATERLINE PLAN & PROFILE
PORT OF LEWISTON
 1626 6TH AVE. NORTH
 LEWISTON, ID. 83501

KELTIC ENGINEERING, INC.
 312 Adams Lane • Lewiston, Idaho 83501 • (208) 745-2175 • (208) 742-3136 fax
 9221 North Nampa Street, Ste 204 • Spokane, WA 99218 • (509) 464-2900 • (509) 464-0025 fax
 • Development • Planning • Design • Construction Management

DESIGNED BY:	ETH
DATE:	12-23-13
LAST REV:	01/14/14 (JDM)
PROJECT NO.:	17-180
SHEET NO.:	4 OF 4