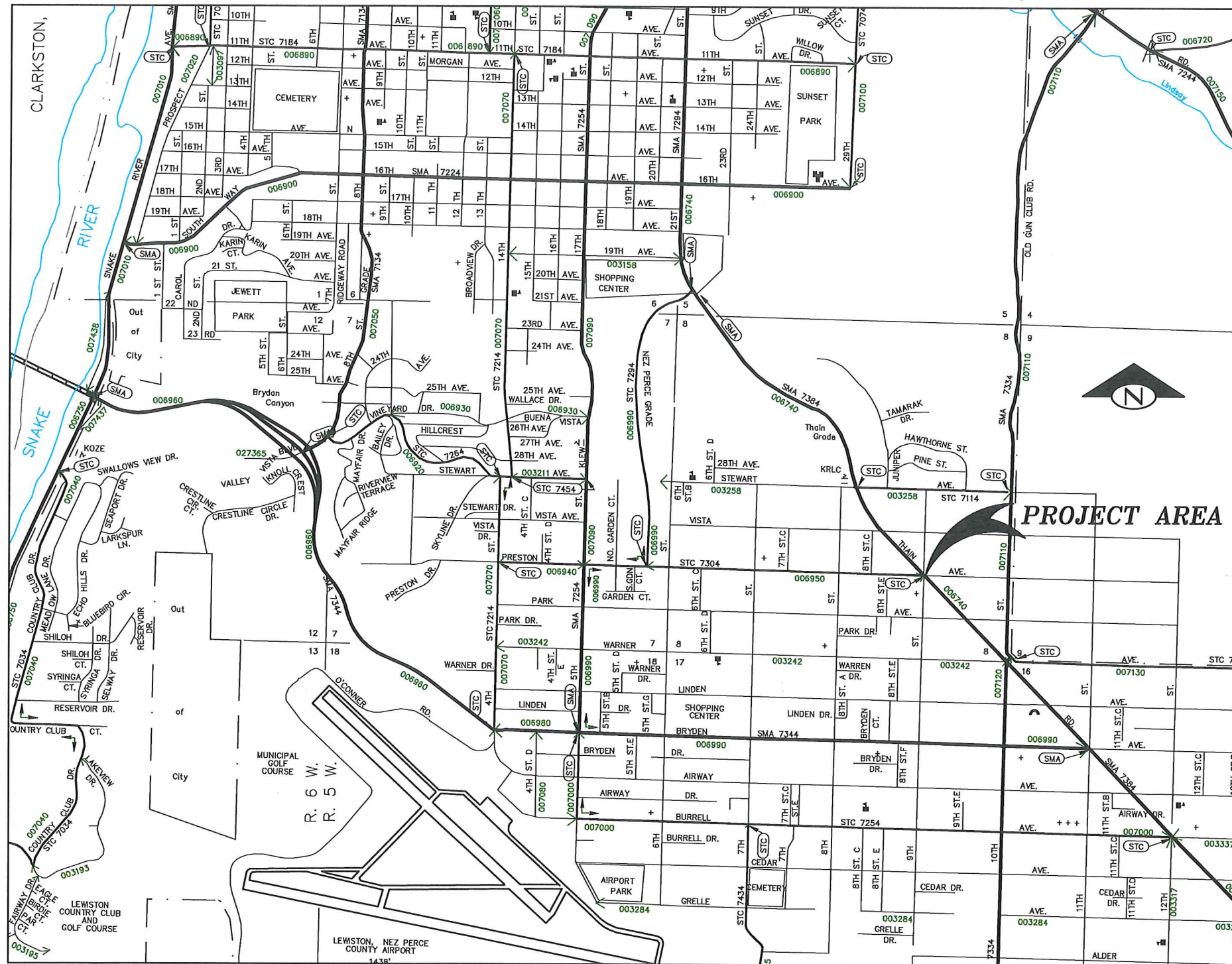


CONSTRUCTION DRAWINGS

PRESTON AVE. and THAIN ROAD INTERSECTION IMPROVEMENT

SE QUARTER, SECTIONS 8, T.35N., R.5W., B.M.
CITY OF LEWISTON, NEZ PERCE COUNTY, IDAHO



SHEET INDEX

- GENERAL**
- C-1 COVER AND SHEET INDEX
 - C-2 DEMOLITION PLAN
 - C-3 PLAN SHEET
 - C-4 DETAILS
 - C-5 DETAILS
 - C-6 DETAILS & QUANTITY SUMMARY
 - C-7 CONSTRUCTION TRAFFIC CONTROL

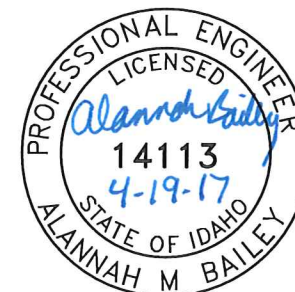
SURVEY CONTROL

1. All Units are in U.S. Survey Feet, Grid Values are SPC Zone 1103 (Idaho West), Geodetic Values are NAD83(1998/1999). Elevations are NAVD88.
2. To convert ground distance to State Plane Grid distances, scale using a combined factor of 1.00001547 (Pt 2A). The difference between grid distances and ground distances does not exceed 1:15,000 for the Idaho West Zone at all locations within this project so scaling may not be necessary depending on accuracy requirements.

DESCRIPTION	NORTHING	EASTING	ELEVATION	STATION	OFFSET
8TH & PRESTON CL MONUMENT	1,723,366.513	2,311,391.045	1,362.73	0+00.00	0.00
10TH & PRESTON CL MONUMENT	1,723,298.246	2,314,054.553	1,396.47	26+84.38	0.00
PK NAIL @ BACK OF CURB	1,723,312.542	2,312,694.997	1,391.01	13+14.91	20.54 RT.



THE LOCATION OF EXISTING UTILITIES ON THESE PLANS ARE APPROXIMATE AND ARE SHOWN FOR INFORMATION ONLY. THE CONTRACTOR SHALL PERFORM A SEPARATE INVESTIGATION IN THE FIELD TO DETERMINE THE EXACT LOCATION OF ALL EXISTING UNDERGROUND UTILITIES. INFORMATION REGARDING THE LOCATION OF EXISTING UNDERGROUND UTILITIES CAN BE OBTAINED FROM CALLING DIG LINE AT 811.



AGENCY TELEPHONE NUMBERS

CITY OF LEWISTON PUBLIC WORKS DEPARTMENT 208 746-1316
STREETS ON CALL 208 791-2311
WASTEWATER 208 791-0986
LOID 208 746-8235
AVISTA UTILITIES 208 798-1473
CABLEONE 208 746-3325
CENTURYLINK 208 798-8380
DIGLINE UNDERGROUND UTILITY LOCATE 811

RECORD DRAWING
08/30/2017



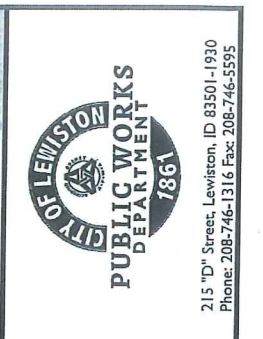
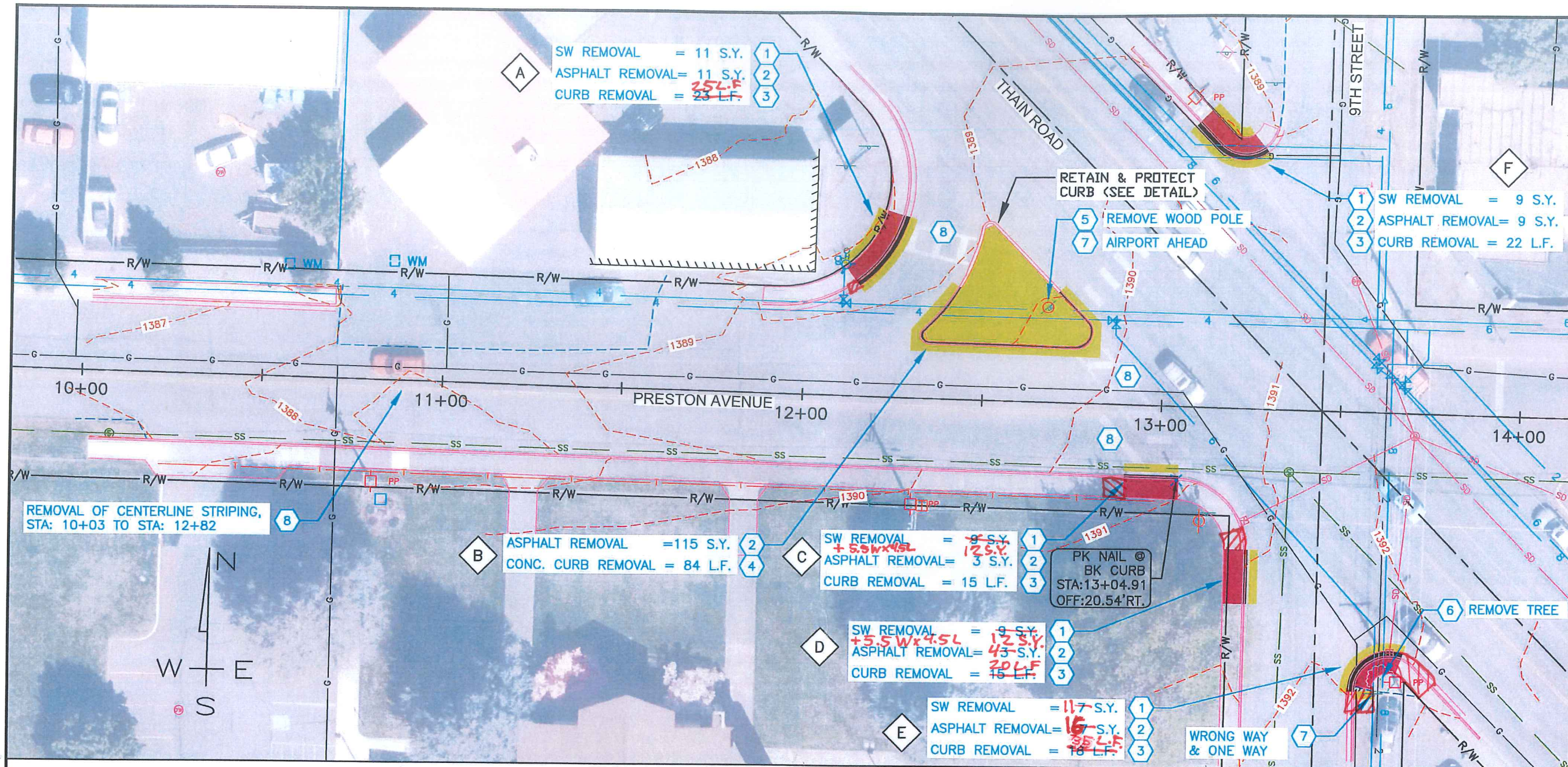
215 "D" Street, Lewiston, ID 83501-1930
Phone: 208-746-1316 Fax: 208-746-5595

NO.	DATE	DESCRIPTION	BY

**PRESTON AVE & THAIN ROAD
INTERSECTION IMPROVEMENT**

COVER AND SHEET INDEX

SCALE: 1" = 200'
DESIGNED BY: AMB
DRAWN BY: BDS
CHECKED BY: AMB
SHEET SET: PRESTON
DATE: 03-07-2017
DRAWING NO.: C-1
SHEET 1 OF 7



NO.	DATE	DESCRIPTION	BY

**PRESTON AVE & THAIN ROAD
INTERSECTION IMPROVEMENT
DEMOLITION PLAN**

SCALE: 1" = 30'
DESIGNED BY: AMB
DRAWN BY: BDS
CHECKED BY: AMB
SHEET SET: PRESTON
DATE: 03-07-2017
DRAWING NO.: C-2
SHEET 2 OF 7

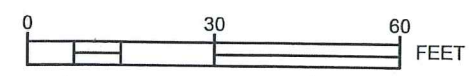
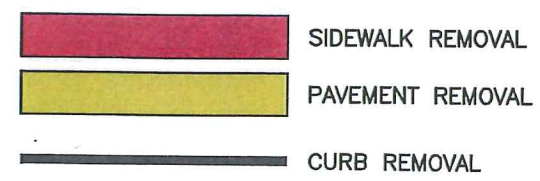


PAY ITEMS

- 1 Removal of Sidewalk, Item 201.4.1.D.1.A
- 2 Removal of Bituminous Surface, Item 201.4.1.D.1.B
- 3 Removal of Conc. Curb & Gutter, Item 201.4.1.E.1.A
- 4 Removal of Conc. Curb, Item 201.4.1.E.1.B
- 5 Removal of Wood Utility Pole, Item 201.4.1.F.1.A
- 6 Removal of Tree, Item 201.4.1.F.1.B
- 7 Remove and Reset Sign, Item SP.1
- 8 Removal of Pavement Markings, (By Others)

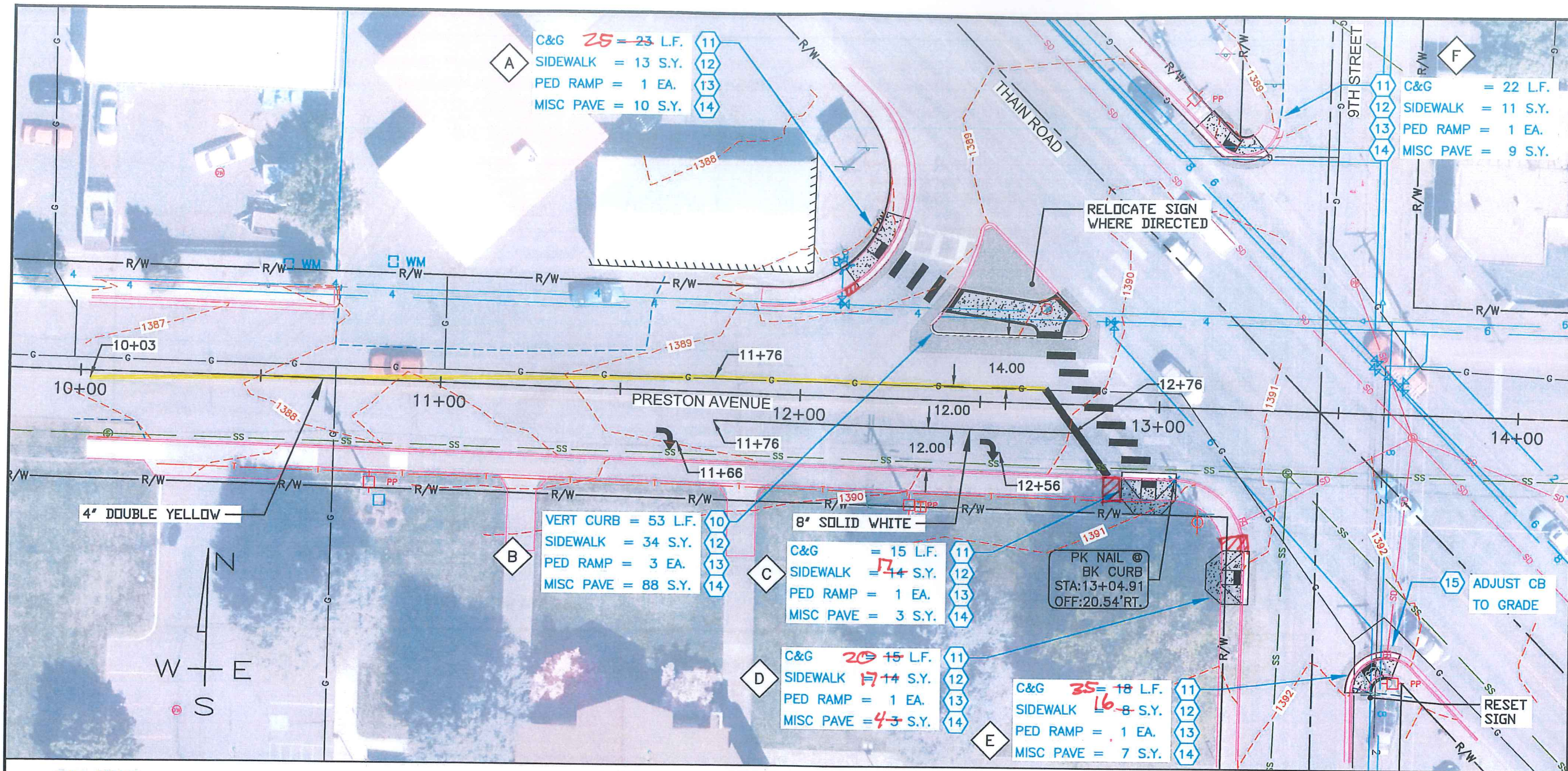
NOTES

1. CURB & GUTTER, SIDEWALK, MANHOLES AND UTILITIES NOT SHOWN TO BE REMOVED OR ABANDONED SHALL BE PRESERVED AND PROTECTED IN PLACE.
2. SEE DETAIL SHEETS FOR STATION AND OFFSET INFORMATION.
3. CONSTRUCTION STAKING BY CITY.



**RECORD DRAWING
08/30/2017**

File Name: M:\CARTAL\Streets\Thain\dwg\Production Drawings\PLANVIEW.dwg Printed 3/7/2017 8:04 AM By: Bruce Stewart



NO.	DATE	DESCRIPTION	BY

**PRESTON AVE & THAIN ROAD
INTERSECTION IMPROVEMENT**

PLAN SHEET

PAY ITEMS

- 10 Mountable Vertical Curb (No Gutter), Item 706.4.1.A.3
- 11 Standard 6-inch Vertical Curb & Gutter, Item 706.4.1.A.5
- 12 Concrete Sidewalk, Thickness 4", Item 706.4.1.E.1
- 13 Pedestrian Ramp w/Detectable Warning Domes, Item 706.4.1.H.1
- 14 Plant Mix Paving, Item 810.4.1.A.3
- 15 Storm Water Catch Basin Gate, Adjust to Grade, Item 2030.4.1.B.1
- 16 Remove & Reset Sign, (Paid for on Demo Sheet)
- 17 Striping and Marking (By Others)

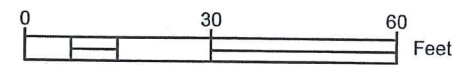
RAMP ID. CITY OF LEWISTON
ADA COMPLIANT TYPE

A	SIDEWALK RAMP TYPE 2
B	COMBINATION
C	SIDEWALK RAMP TYPE 1
D	SIDEWALK RAMP TYPE 1
E	SIDEWALK RAMP TYPE 2
F	SIDEWALK RAMP TYPE 2

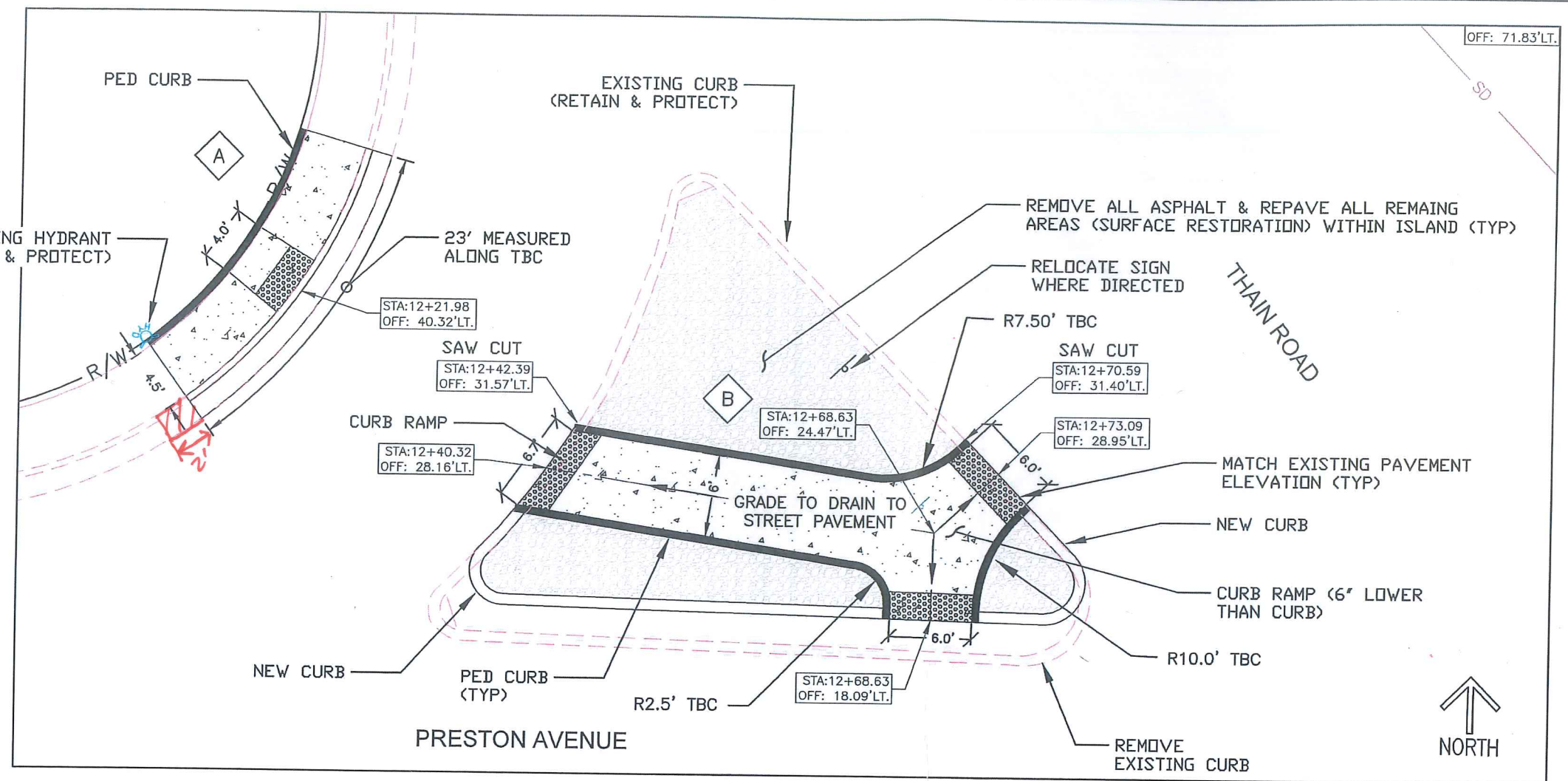
**RECORD DRAWING
08/30/2017**

NOTES

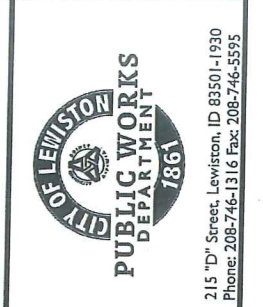
1. CURB & GUTTER, SIDEWALK, MANHOLES AND UTILITIES NOT SHOWN TO BE REMOVED OR ABANDONED SHALL BE PRESERVED AND PROTECTED IN PLACE.
2. SEE DETAIL SHEETS FOR STATION AND OFFSET INFORMATION.
3. CONSTRUCTION STAKING BY CITY.



SCALE: 1" = 30'
DESIGNED BY: AMB
DRAWN BY: BDS
CHECKED BY: AMB
SHEET SET: PRESTON
DATE: 03-07-2017
DRAWING NO.: C-3
SHEET 3 OF 7



DETAIL SIDEWALK RAMPS A & B
SCALE 1" = 10'

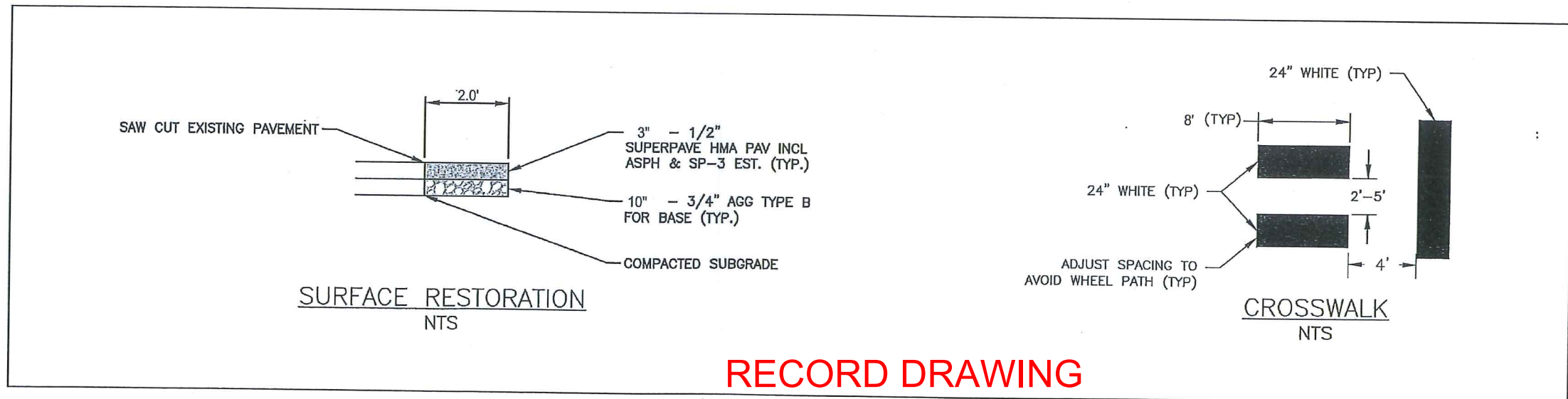


215 "D" Street, Lewiston, ID 83501-1930
Phone: 208-746-1316 Fax: 208-746-5595

NO.	DATE	DESCRIPTION	BY

REVISIONS

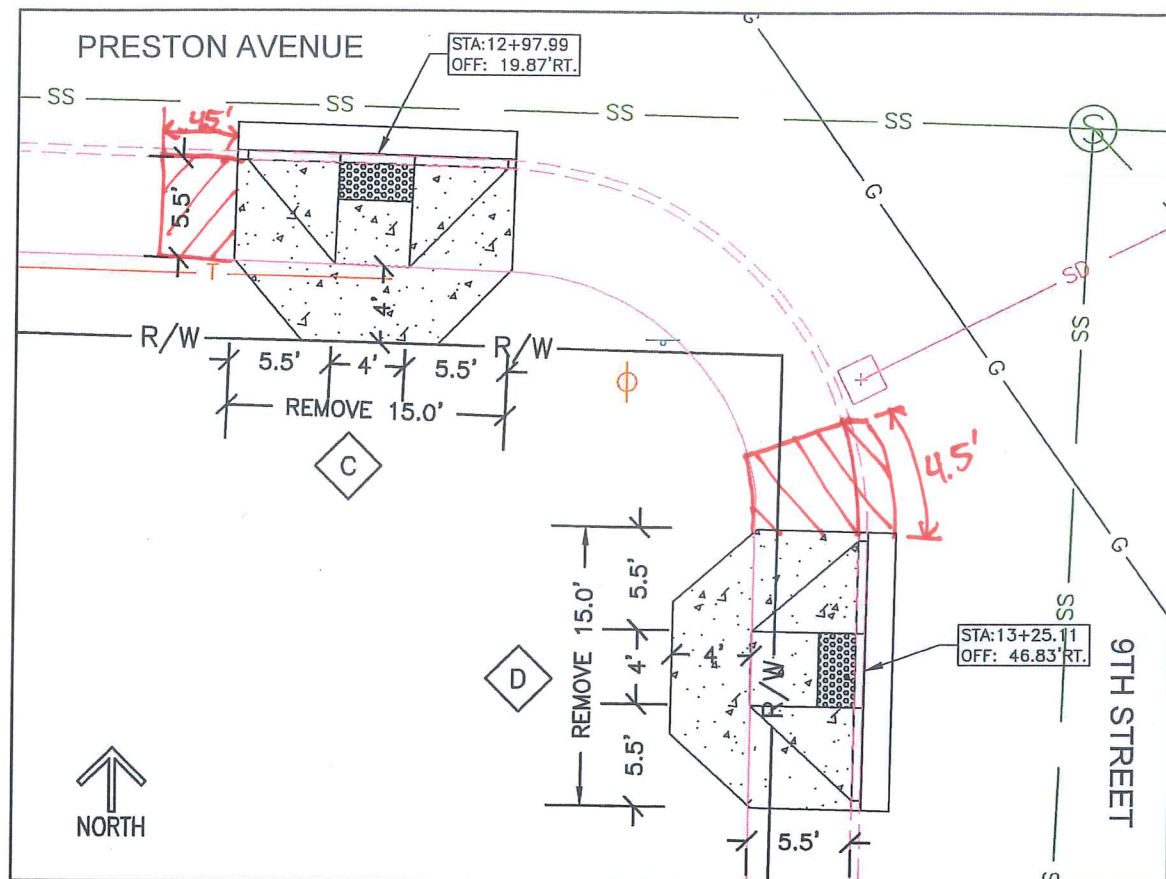
PRESTON AVE & THAIN ROAD
INTERSECTION IMPROVEMENT
DETAILS



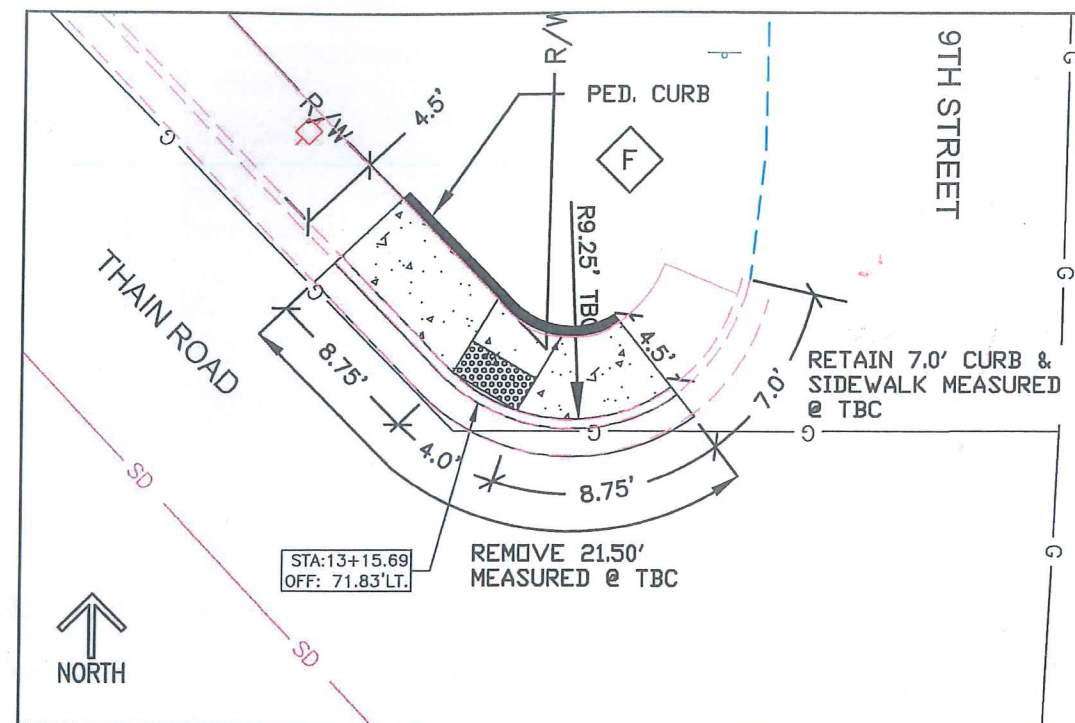
RECORD DRAWING
08/30/2017

SCALE: 1" = 30'
DESIGNED BY: AMB
DRAWN BY: BDS
CHECKED BY: AMB
SHEET SET: PRESTON
DATE: 03-07-2017
DRAWING NO.: C-4
SHEET 4 OF 7

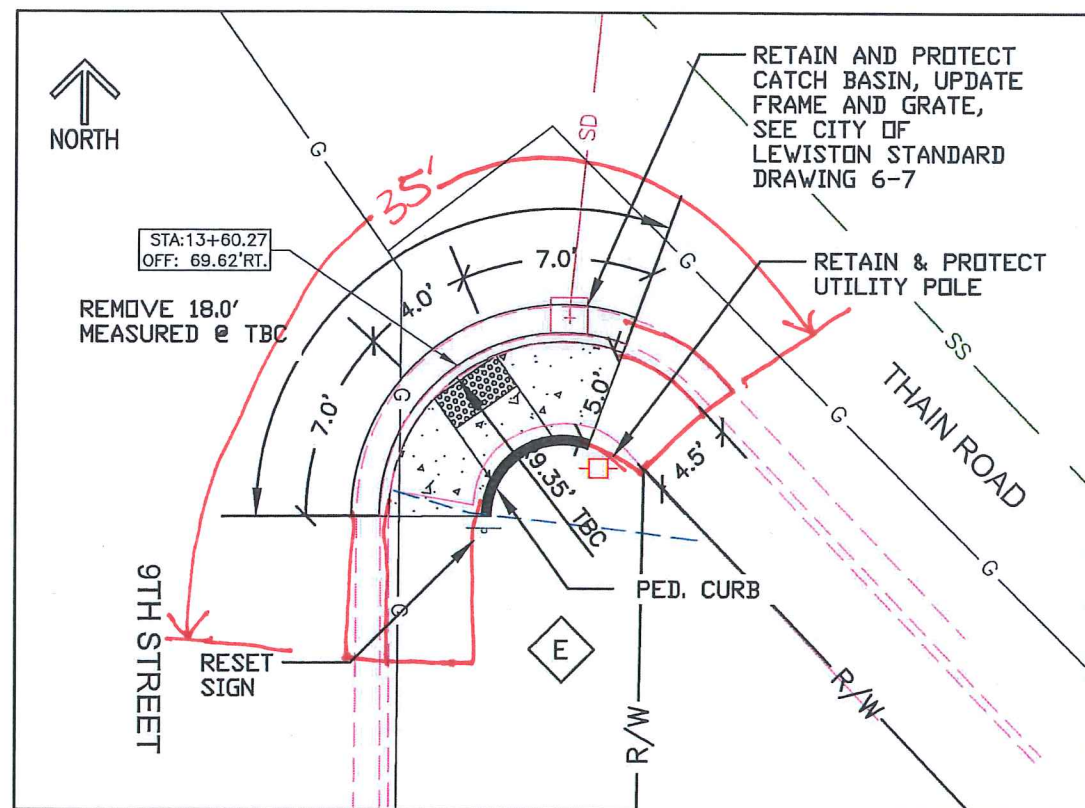
File Name: M:\CAPITAL\Streets\Thain\dwg\Production Drawings\DETAILS.dwg Printed 3/7/2017 8:08 AM By: Bruce Stewart



DETAIL SIDEWALK RAMPS C & D
SCALE 1" = 10'

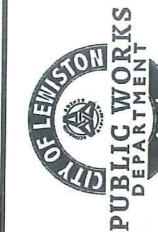


DETAIL SIDEWALK RAMP F
SCALE 1" = 10'



DETAIL SIDEWALK RAMP E
SCALE 1" = 10'

RECORD DRAWING
08/30/2017



215 "D" Street, Lewiston, ID 83501-1930
Phone: 208-746-1316 Fax: 208-746-5595

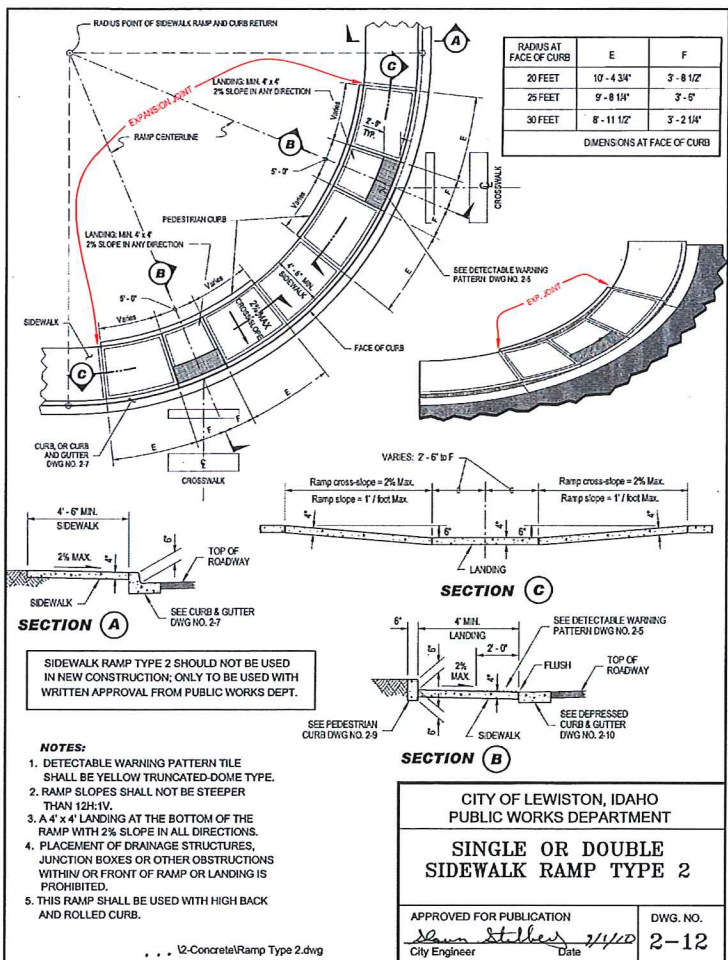
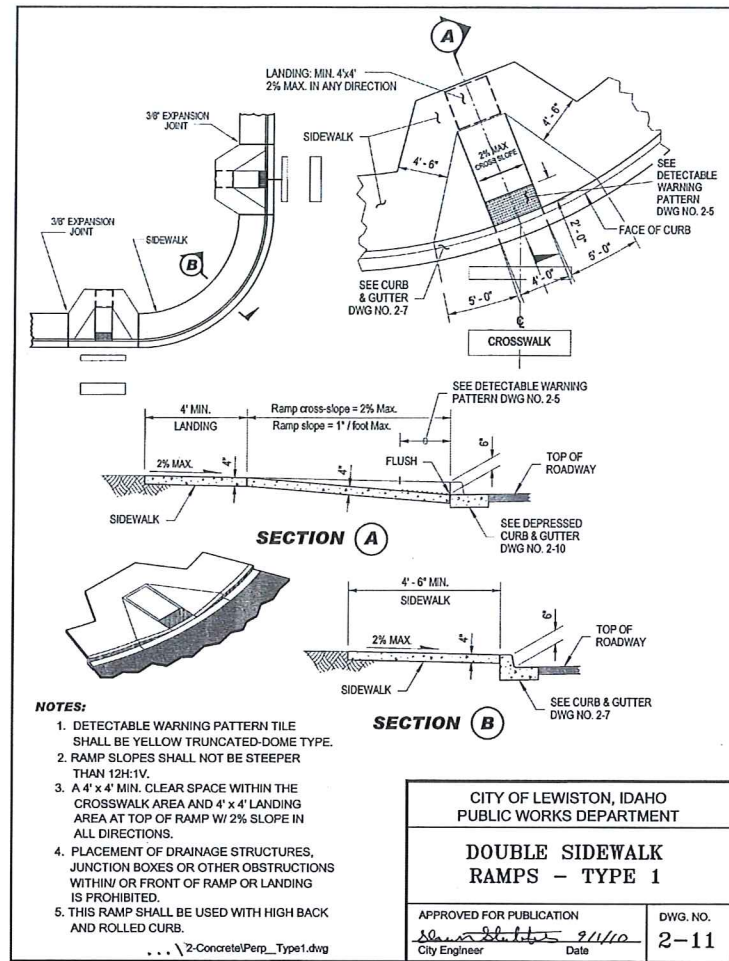
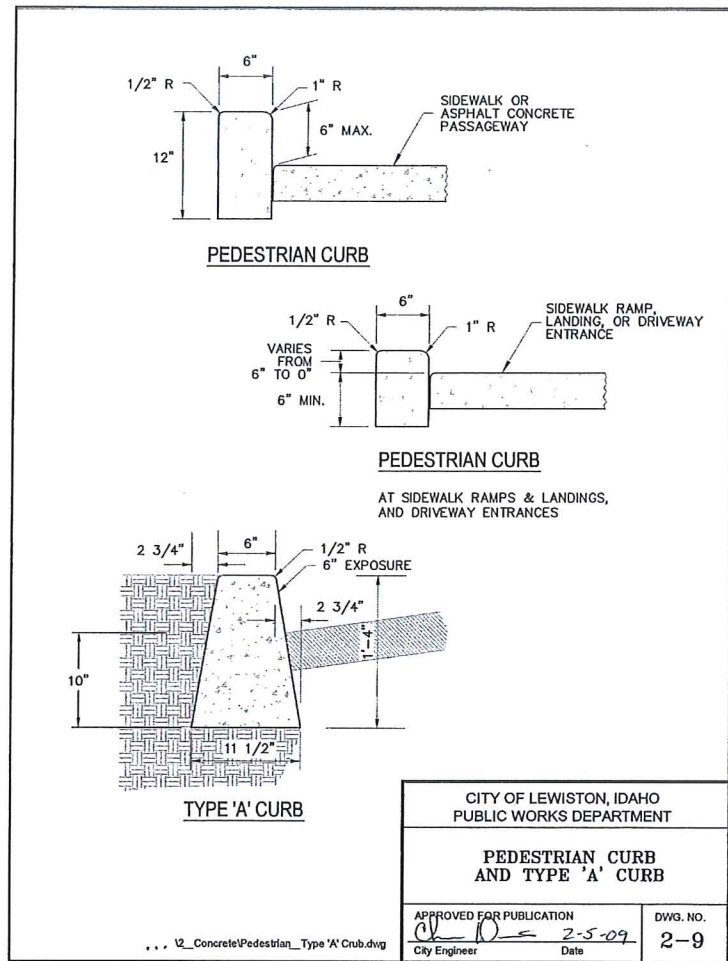
NO.	DATE	DESCRIPTION	BY

**PRESTON AVE & THAIN ROAD
INTERSECTION IMPROVEMENT**

DETAILS

SCALE: 1" = 30'
DESIGNED BY: AMB
DRAWN BY: BDS
CHECKED BY: AMB
SHEET SET: PRESTON
DATE: 03-07-2017
DRAWING NO.: C-5
SHEET 5 OF 7

File Name: M:\CAPITAL\Streets-Thain\dwg\Production Drawings\DETAILS.dwg Printed 3/7/2017 8:08 AM By Bruce Stewart



QUANTITY SUMMARY

ITEM NO.	ITEM DESCRIPTION	UNIT	ESTIMATED QUANTITY
Base Bid			
Division 200 - Earthwork			
201.4.1.D.1.A	Removal of Conc. Sidewalk	SY	45
201.4.1.D.1.B	Removal of Bituminous Surface	SY	148
201.4.1.E.1.A	Removal of Conc. Curb & Gutter	LF	93
201.4.1.E.1.B	Removal of Conc. Curb	LF	84
201.4.1.F.1.A	Removal of Wood Utility Pole	EA	1
201.4.1.F.1.B	Removal of Tree	EA	1
Division 700 - Concrete			
706.4.1.A.3	Mountable Vertical Curb (No Gutter)	LF	53
706.4.1.A.5	Standard 6 inch Vertical Curb and Gutter	LF	93
706.4.1.E.1	Concrete Sidewalks (includes pedestrian ramps & ramp curbs)	SY	94
706.4.1.H.1.A	Pedestrian Ramp w/ Detectable Warning Type 1, A	EA	1
706.4.1.H.1.B	Pedestrian Ramp w/ Detectable Warning Combo, B	EA	3
706.4.1.H.1.C	Pedestrian Ramp w/ Detectable Warning Type 1, C	EA	1
706.4.1.H.1.D	Pedestrian Ramp w/ Detectable Warning Type 1, D	EA	1
706.4.1.H.1.F	Pedestrian Ramp w/ Detectable Warning Type 1, E	EA	1
706.4.1.H.1.G	Pedestrian Ramp w/ Detectable Warning Type 2, F	EA	1
Division 800 - Aggregates and Asphalt			
802.4.1.B.1	Crushed Aggregate for Base, Type 1 3/4"	TN	107
810.4.1.A.3	Plant Mix Pavement (SP-2, PG 64-28, 1/2" Agg)	SY	120
Division 1000 - Construction Stormwater BMPs			
1006.4.1.C.1	Inlet Protection	EA	4
Division 1100 - Traffic			
1103.4.1.A.1	Construction Traffic Control	LS	1
Division 2000 - Miscellaneous			
2010.4.1.A.1	Mobilization	LS	1
2010.4.1.B.1	Sanitary Facilities	LS	1
2030.4.1.B.1	Storm Water Catch Basin Grate, Adjust to Grade	EA	1
Division SP - Special Provisions			
SP.1	Remove & Reset Sign	EA	2



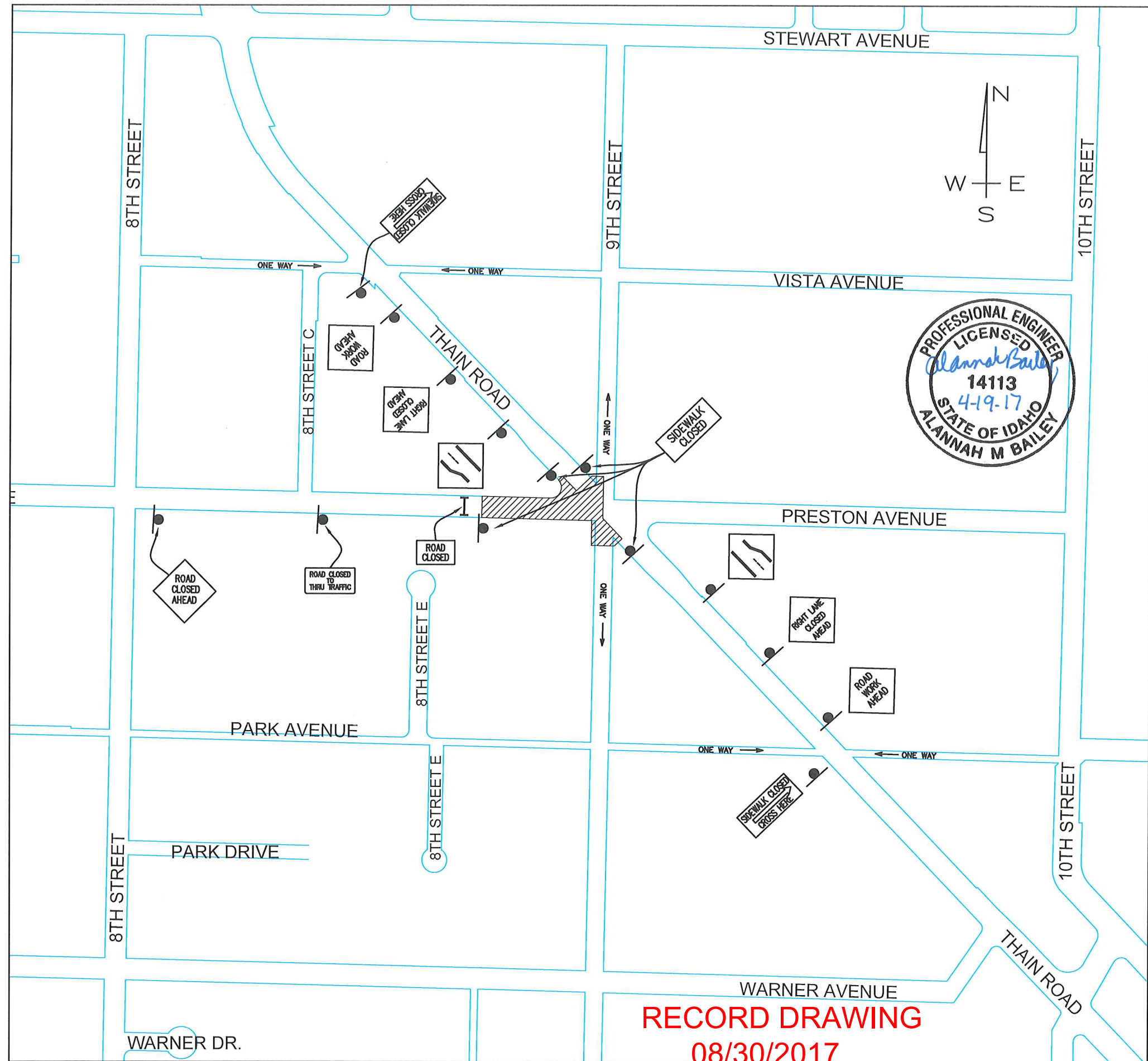
NO.	DATE	DESCRIPTION	BY

**PRESTON AVE & THAIN ROAD
INTERSECTION IMPROVEMENT
QUANTITY SUMMARY & DETAILS**



**RECORD DRAWING
08/30/2017**

SCALE: 1" = 30'
DESIGNED BY: AMB
DRAWN BY: BDS
CHECKED BY: AMB
SHEET SET: PRESTON
DATE: 03-07-2017
DRAWING NO.: C-6
SHEET 6 OF 7



RECORD DRAWING
08/30/2017

NOTES:

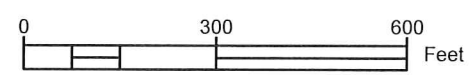
- SINGLE LANE CLOSURE FOR THAIN ROAD NORTHWEST AND SOUTHEAST BOUND.

LEGEND

- WORK ZONE
- SIGN
- CHANNELIZING DEVICE
- TYPE III BARRICADES

TRAFFIC CONTROL SIGNS

	W20-1 48" x 48"
	W20-3 48" x 48"
	W20-5 48" x 48"
	W4-2 48" x 48"
	R11-4 60" x 30"
	R11-2 48" x 30"
	R9-9 24" x 12"
	R9-9 24" x 12"
	TYPE III BARRICADE



215 "D" Street, Lewiston, ID 83501-1930
Phone: 208-746-1316 Fax: 208-746-5595

REVISIONS	DESCRIPTION	NO.	DATE	BY

**PRESTON AVE & THAIN ROAD
INTERSECTION IMPROVEMENT
CONSTRUCTION TRAFFIC CONTROL**

SCALE: 1" = 300'
DESIGNED BY: AMB
DRAWN BY: BDS
CHECKED BY: AMB
SHEET SET: PRESTON
DATE: 03-07-2017
DRAWING NO.: C-7
SHEET 7 OF 7