

HILLCREST AIRCRAFT COMPANY INC.

2/5/07
REVISION 3/19/07

540 OCONNOR ROAD, LEWISTON AIRPORT, LEWISTON IDAHO, ZONE A

FIRE DEPARTMENT NOTES

JULIAN SORRELL, FIRE DEPARTMENT (208) 743-3554

- SHOULD GATES BE INSTALLED ON THIS PROJECT DURING OR ANYTIME AFTER DEVELOPMENT, AN EMERGENCY KEY BOX AND KEYS SHALL BE REQUIRED FOR EMERGENCY ACCESS. THE COMPLETED GATES SHALL REMAIN OPEN AND NOT OBSTRUCT THE FIRE DEPARTMENT ACCESS UNTIL INSPECTED AND APPROVED BY THE FIRE PROTECTION BUREAU. IFC 503.6
- ALL REQUIRED FIRE ACCESS ROADWAYS SHALL BE COMPLETED TO A MINIMUM WIDTH OF 20 FEET, CAPABLE OF SUPPORTING 78,000 LBS, WITH AN ALL WEATHER SURFACE, TO WITHIN 150 OF ALL STOCKPILES AND ALL SIDES OF BUILDINGS. ACCESS ROADWAYS TO BE POSTED "NO STOPPING/FIRE LANE" AND SHALL NOT BE USED FOR THE STORAGE OF MATERIALS. IFC 501.4, 503.4
- "FIRE LANE" SIGNS ARE REQUIRED TO BE INSTALLED ALONG THE INTERIOR ACCESS ROADWAYS IN LOCATIONS WHERE VEHICLE PARKING WOULD ENROACH ON THE REQUIRED 20 FOOT CLEAR WIDTH OF THE ROADWAY. ALL RAISED CURBS SHALL BE PAINTED RED WITH "FIRE LANE" STENCILLED 4 INCHES AT 30 FOOT INTERVALS. IFC 503.3
- UNDERGROUND FIRE SERVICE MAINS AND ALL COMPONENTS SHALL CONFORM TO NFPA 24 MINIMUM STANDARD. THE PLANS SHALL BE REVIEWED AND APPROVED BY THE FIRE DEPARTMENT PRIOR TO INSTALLATION. STAMPED APPROVED PLANS MUST BE KEPT ON SITE FOR THE FIRE INSPECTOR. IFC 105.3.5
- ALL NEW FIRE HYDRANTS SHALL MEET THE FOLLOWING REQUIREMENTS:
 - 1) WATEROUS PACER - WITH INTEGRAL 5-INCH HARRINGTON STORTZ CONNECTION.
 - 2) MUELLER CENTURION - WITH INTEGRAL 5-INCH HARRINGTON STORTZ CONNECTION.
 - 3) 6" MINIMUM SUPPLY LINE FOR HYDRANT.
 - 4) IF COMBUSTIBLE MATERIALS ARE USED (INCLUDING FRAMING) THE WATER SUPPLY (INCLUDING MAINS AND HYDRANTS) SHALL BE DESIGNED, INSTALLED, TESTED AND APPROVED BY THE FIRE DEPARTMENT PRIOR TO STOCKPILING COMBUSTIBLE BUILDING MATERIALS.
 - 5) WATER SUPPLY SYSTEMS FOR PHASED CONSTRUCTION SHALL PROVIDE REQUIRED FIRE FLOWS AT ALL PHASES.
 - 6) ALL FIRE HYDRANTS SHALL BE PROVIDED WITH AN INTEGRAL 5-INCH HARRINGTON HIHS INTEGRAL STORTZ CONNECTION, WITH THE APPROVED ATTACHED SEAL CAP AND AIRCRAFT CABLE.
- APPROVED NUMBERS AND/OR LETTERS SHALL BE PLACED ON ALL BUILDINGS TO BE VISIBLE FROM THE STREET, COLOR CONTRASTING TO BACKGROUND. ADDRESS POSTING IS REQUIRED ON BUILDING, FIRE DEPARTMENT ACCESS ON ALL REAR DOORS.
 - 6.1) INDIVIDUAL NUMBERS TO BE MINIMUM 12 INCHES HIGH X 1/2" STROKE, WHEN OVER 50' FROM ACCESS.
- ALL INSPECTIONS REQUIRE A MINIMUM 24 HOUR NOTICE. ALL FIRE DEPARTMENT INSPECTIONS ARE TO BE REQUESTED THROUGH THE PERMIT CENTER, PLEASE BE SPECIFIC AS TO THE TYPE OF INSPECTION REQUESTED.
- PROJECT SHALL COMPLY WITH THE PROVISIONS OF IFC 105.3.6 COMPLIANCE WITH CODE.
- CONTRACTOR TO COORDINATE WITH CITY OF LEWISTON AND FRANCHISE UTILITY COMPANIES.
- APPLICATION AND PAYMENT FOR KNOX DEVICES AND STORTZ HYDRANT ADAPTERS SHALL BE COMPLETED PRIOR TO FIRE DEPARTMENT APPROVAL OF PERMITS. CONTACT THE LEWISTON FIRE DEPARTMENT FOR THE KNOX SECURITY APPLIANCES APPLICATION AND PAYMENT. CONTACT DAVE SIX WITH THE CITY OF LEWISTON WATER DEPARTMENT FOR ORDERING AND PAYMENT OF STORTZ HYDRANT ADAPTERS.
- REQUIRED FIRE APPARATUS ACCESS ROADS AND FIRE HYDRANTS MUST BE INSTALLED, TESTED, PLACED IN SERVICE AND APPROVED PRIOR TO BUILDING PERMIT ISSUANCE.
- "NOTICE TO CONTRACTORS" INSTALLATION OF FIRE SERVICE MAINS, FIRE SPRINKLER SYSTEMS, FIRE ALARM SYSTEMS OR OTHER FIRE PROTECTION SYSTEMS IS NOT ALLOWED PRIOR TO PLAN APPROVAL BY THE LEWISTON FIRE DEPARTMENT. FIRE SPRINKLER SYSTEMS REQUIRED APPROVAL BY THE STATE FIRE MARSHAL'S OFFICE PRIOR TO BEING SUBMITTED TO THE LEWISTON FIRE DEPARTMENT. CONTRACTORS WHO ENGAGE IN INSTALLATION PRIOR TO APPROPRIATE APPROVALS MAY BE CITED AND THE PROJECT WILL BE RED TAGGED. IFC111, 105.4, 105.7.1, 105.7.3, 105.7.11, 901.2.
- SIZE AND TYPE OF FIRE SERVICE MAINS SHALL BE APPROVED BY THE FIRE DEPARTMENT PRIOR TO INSTALLATION OF UNDERGROUND SUPPLY LINES FOR FIRE SPRINKLER SERVICE LESS THAN 6" IN DIAMETER SHALL BE MINIMUM SCHEDULE 80. NFPA 13, 24.
- A CONTRACTOR IS REQUIRED TO SUBMIT A SET OF "AS BUILTS" DOCUMENTS/DRAWINGS FOR APPROVAL PRIOR TO FINAL INSPECTION WHEN NOT INSTALLED PER PLAN.

STANDARDS

- IDAHO STANDARDS FOR PUBLIC WORKS CONSTRUCTION (LATEST ED.)
- NATIONAL ELECTRIC COUNCIL & LOCAL ELECTRIC CODES
- AMERICAN WATER WORKS ASSOCIATION STANDARDS
- IDAPA 58 & 10 STATE STANDARDS
- CITY OF LEWISTON STANDARD DRAWINGS
- INTERNATIONAL BUILDING CODE 2003
- INTERNATIONAL FIRE CODE 2003
- DEQ TECHNICAL GUIDANCE MANUAL FOR SEWAGE DISPOSAL SYSTEMS

BUILDING DEPARTMENT NOTES

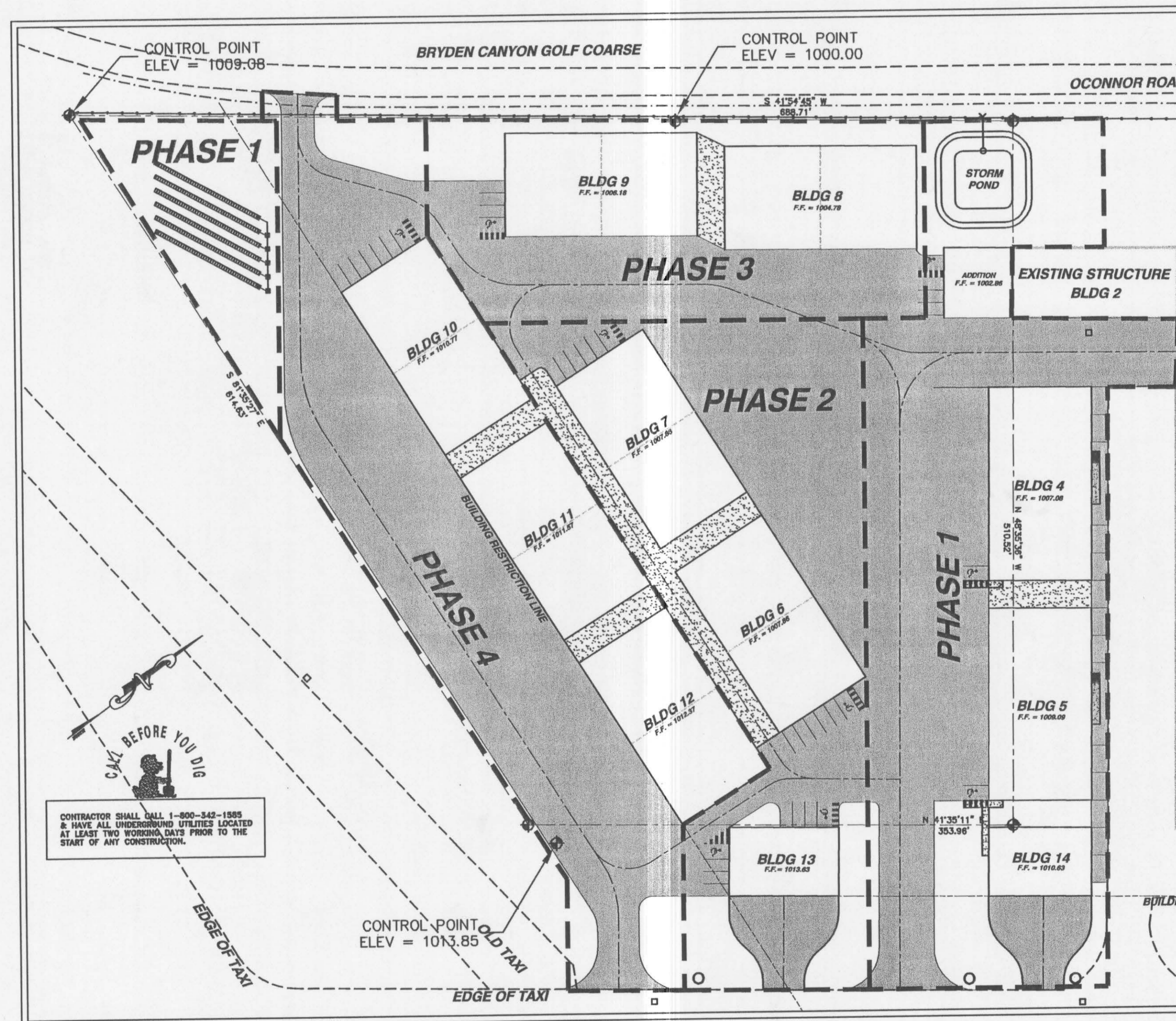
- OWNER SHALL SUBMIT A LIST OF ALL CONTRACTORS, SUB-CONTRACTORS AND EQUIPMENT INSTALLERS WORKING EITHER FOR THE OWNER OR THE GENERAL CONTRACTOR. CITY OF LEWISTON BUSINESS LICENSE IS REQUIRED TO PERFORM WORK IN THE CITY OF LEWISTON (LEWISTON CITY CODE SECTION 21-21)
- CONTRACTORS ARE REQUIRED TO BE REGISTERED IN WITH THE STATE OF IDAHO. CONTRACTOR REGISTRATION NUMBER IS REQUIRED TO BE PRESENTED AT THE TIME OF PERMITTING AND SHOWN ON ALL PERMITS. (IDAHO CODE SECTION 52-5209)
- NO BUILDING SPECIAL INSPECTION REQUIRED ON CIVIL ITEMS.

SHEET INDEX

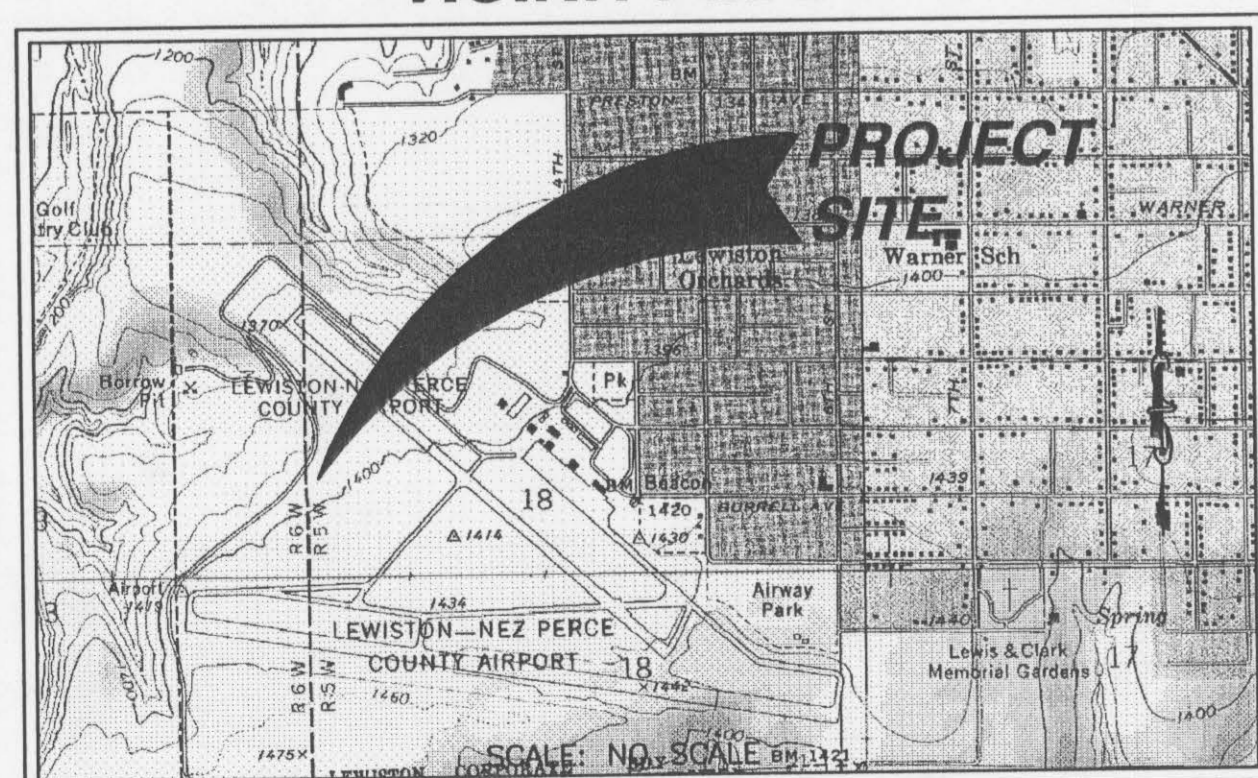
- SHEET 1 - COVER / MASTER PLAN
- SHEET 2 - EROSION CONTROL PLAN
- SHEET 3 - GRADING PLAN
- SHEET 4 - UTILITY PLAN
- SHEET 4.1- CONDUITE PLAN FOR POWER-PHONE
- SHEET 5 - CIVIL PLAN
- SHEET 6 - SEPTIC PLAN & DESIGN DATA
- SHEET 7 - SEPTIC SECTIONS & DETAILS
- SHEET 8 - FOUNDATION PLAN
- SHEET 9 - FOOTING DETAILS
- SHEET 10 - CIVIL SECTIONS & DETAILS
- SHEET 11 - CITY DETAILS

LEGEND

| | |
|-------|---|
| --- | LEASE LINE |
| --- | BUILDING RESTRICTION LINE (750' FROM CL OF R.W. 8-26) |
| --- | 10" FL FIRE LINE (10"=INCHES) |
| --- | 4" W DOMESTIC WATER LINE (4" = INCHES) |
| --- | SAN SANITARY SEWER |
| --- | STORM STORM SEWER |
| --- | 4" FM SANITARY FORCE MAIN 2" |
| --- | PH PHONE |
| --- | UGP UNDER GROUND POWER |
| --- | FENCE |
| --- | 2550 CONTOUR LINE |
| --- | EDGE OF PAVEMENT |
| --- | EDGE OF GRAVEL |
| WV | WATER VALVE |
| ○ | WATER TEE OR ELBOW |
| M | WATER METER ASSEMBLY |
| ⊗ | FIRE HYDRANT |
| ⊙ | SANITARY OR STORM MANHOLE |
| ● c/o | SANITARY CLEANOUT |
| □ | DROP BOX |
| ⊕ | CONTROL POINT |
| ⊖ | TEST PIT |
| ⊗ | UTILITY PEDISTAL |
| ⊠ | CATCH BASIN |
| --- | CULVERT OR OUTLET |



VICINITY MAP



UTILITY CONTACTS

| UTILITY | ENTITY | CONTACT | PHONE |
|---------|---------|----------------|--------------|
| ROAD | CITY | MERRITT DONLON | 208.791.2654 |
| WATER | CITY | DAVE SIX | 208.791.2031 |
| SEWER | CITY | DAVE SIX | 208.791.2031 |
| PHONE | QUEST | JULIO MENDEZ | 208.798.8380 |
| POWER | AVISTA | KENNEY RAY | 208.791.8003 |
| CABLE | CABLE 1 | TOM DONOHUE | 208.746.3325 |

CONTACT INFORMATION

OWNER: HILLCREST AIRCRAFT CO. INC.
AGENT: GALE WILSON
540 OCONNOR RD.
LEWISTON, ID 83501
PHONE: (208) 746-8271
FAX: (208) 743-6872

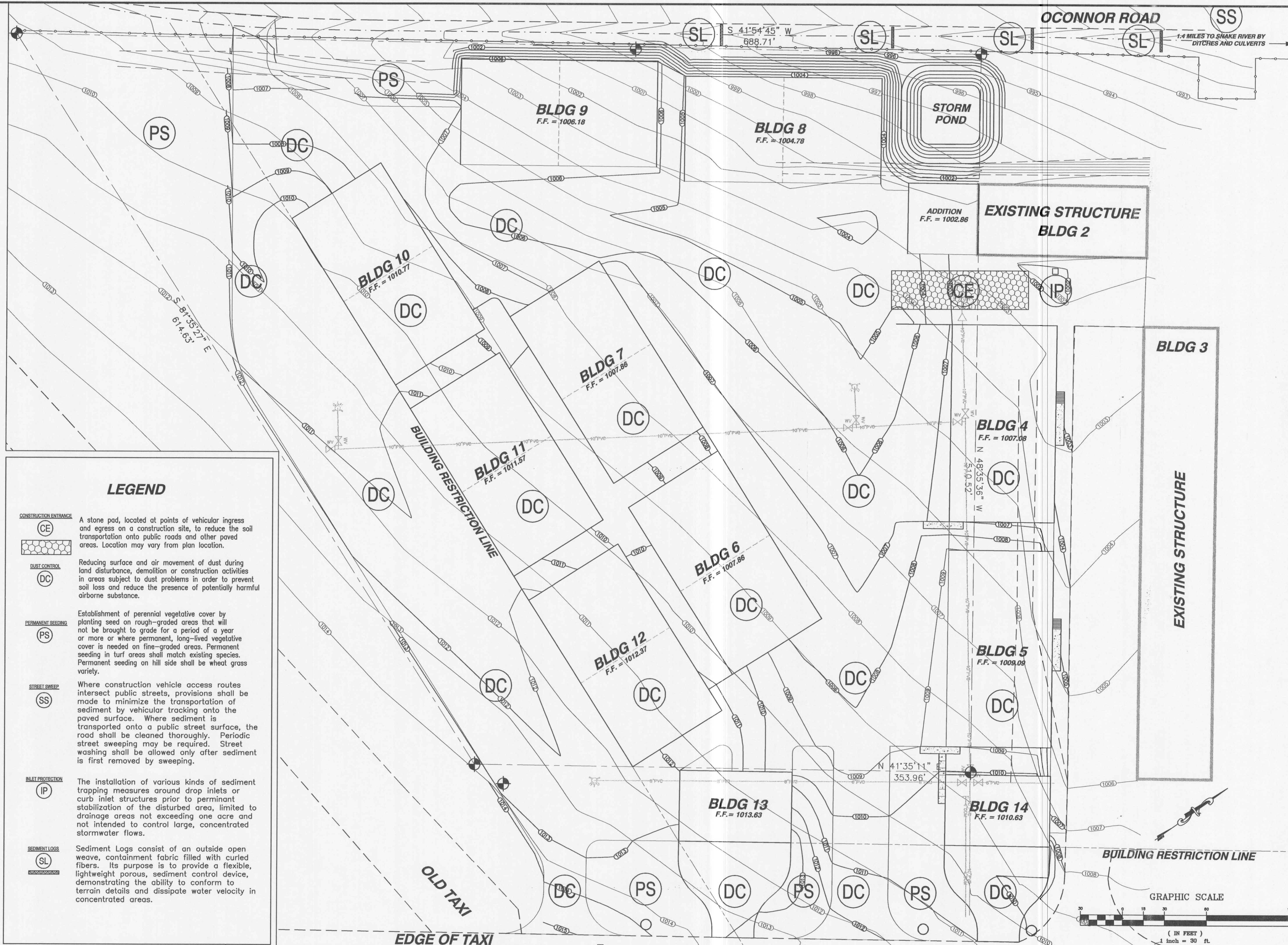
CONTRACTOR: MARK HEUETT, GEN. CONTRACTOR
PHONE: (509) 243-7855
CELL: (509) 254-1063

CIVIL ENGINEER: C. RYAN FISKE, P.E.
INSPECTOR: ANACLIN ENGINEERING, PLLC
4045 EAGLE CT.
LEWISTON, ID 83501
PHONE: (208) 791-8055
FAX: (208) 750-1082

NACLIN ENGINEERING & DRAFTING
"an affordable alternative"

4025 EAGLE COURT
LEWISTON, IDAHO 83501
FAX (208) 750-1082
(208) 791-8055

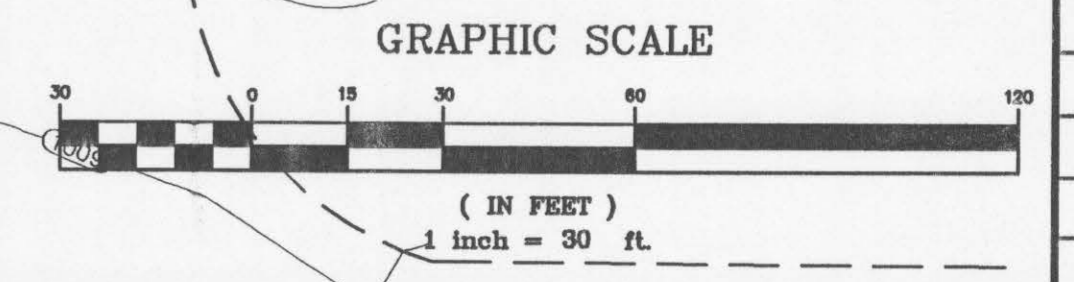
RECEIVED
 PUBLIC WORKS
 ENGINEERING DEPT.
 COPY
 540 O'Connor Rd Bldgs 4+5
 Bo7-001865 #2
 RECEIVED
 PUBLIC WORKS
 ENGINEERING DEPT.
 COPY
 2/8 2007
 CITY OF LEWISTON
 BUILDING SERVICES



LEGEND

- CONSTRUCTION ENTRANCE**
 A stone pad, located at points of vehicular ingress and egress on a construction site, to reduce the soil transportation onto public roads and other paved areas. Location may vary from plan location.
- DUST CONTROL**
 Reducing surface and air movement of dust during land disturbance, demolition or construction activities in areas subject to dust problems in order to prevent soil loss and reduce the presence of potentially harmful airborne substance.
- PERMANENT SEEDING**
 Establishment of perennial vegetative cover by planting seed on rough-graded areas that will not be brought to grade for a period of a year or more or where permanent, long-lived vegetative cover is needed on fine-graded areas. Permanent seeding in turf areas shall match existing species. Permanent seeding on hill side shall be wheat grass variety.
- STREET SWEEP**
 Where construction vehicle access routes intersect public streets, provisions shall be made to minimize the transportation of sediment by vehicular tracking onto the paved surface. Where sediment is transported onto a public street surface, the road shall be cleaned thoroughly. Periodic street sweeping may be required. Street washing shall be allowed only after sediment is first removed by sweeping.
- INLET PROTECTION**
 The installation of various kinds of sediment trapping measures around drop inlets or curb inlet structures prior to permanent stabilization of the disturbed area, limited to drainage areas not exceeding one acre and not intended to control large, concentrated stormwater flows.
- SEDIMENT LOGS**
 Sediment Logs consist of an outside open weave, containment fabric filled with curled fibers. Its purpose is to provide a flexible, lightweight porous, sediment control device, demonstrating the ability to conform to terrain details and dissipate water velocity in concentrated areas.

| | | | | | | | | | |
|--|---|-----------|-------------|--------------|-------|--------|--------------|-------|----------------|
| | | | | | | | | | |
| <p>NAACLIN ENGINEERING & DRAFTING <i>"an affordable alternative"</i></p> | | | | | | | | | |
| <p>4025 EAGLE COURT LEWISTON, IDAHO 83501 PHONE (208) 743-1082 FAX (208) 743-8888</p> | | | | | | | | | |
| <p>HILLCREST AIRCRAFT HANGER PROJECT 2007 EROSION CONTROL PLAN</p> | <table border="1" style="width: 100%; border-collapse: collapse;"> <tr> <td style="font-size: 8px;">DRAWN BY:</td> <td style="font-size: 8px;">CHECKED BY:</td> </tr> <tr> <td style="font-size: 8px;">DESIGNED BY:</td> <td style="font-size: 8px;">DATE:</td> </tr> <tr> <td style="font-size: 8px;">SCALE:</td> <td style="font-size: 8px;">PROJECT NO.:</td> </tr> <tr> <td style="font-size: 8px;">DATE:</td> <td style="font-size: 8px;">SHEET C2 OF 11</td> </tr> </table> | DRAWN BY: | CHECKED BY: | DESIGNED BY: | DATE: | SCALE: | PROJECT NO.: | DATE: | SHEET C2 OF 11 |
| DRAWN BY: | CHECKED BY: | | | | | | | | |
| DESIGNED BY: | DATE: | | | | | | | | |
| SCALE: | PROJECT NO.: | | | | | | | | |
| DATE: | SHEET C2 OF 11 | | | | | | | | |

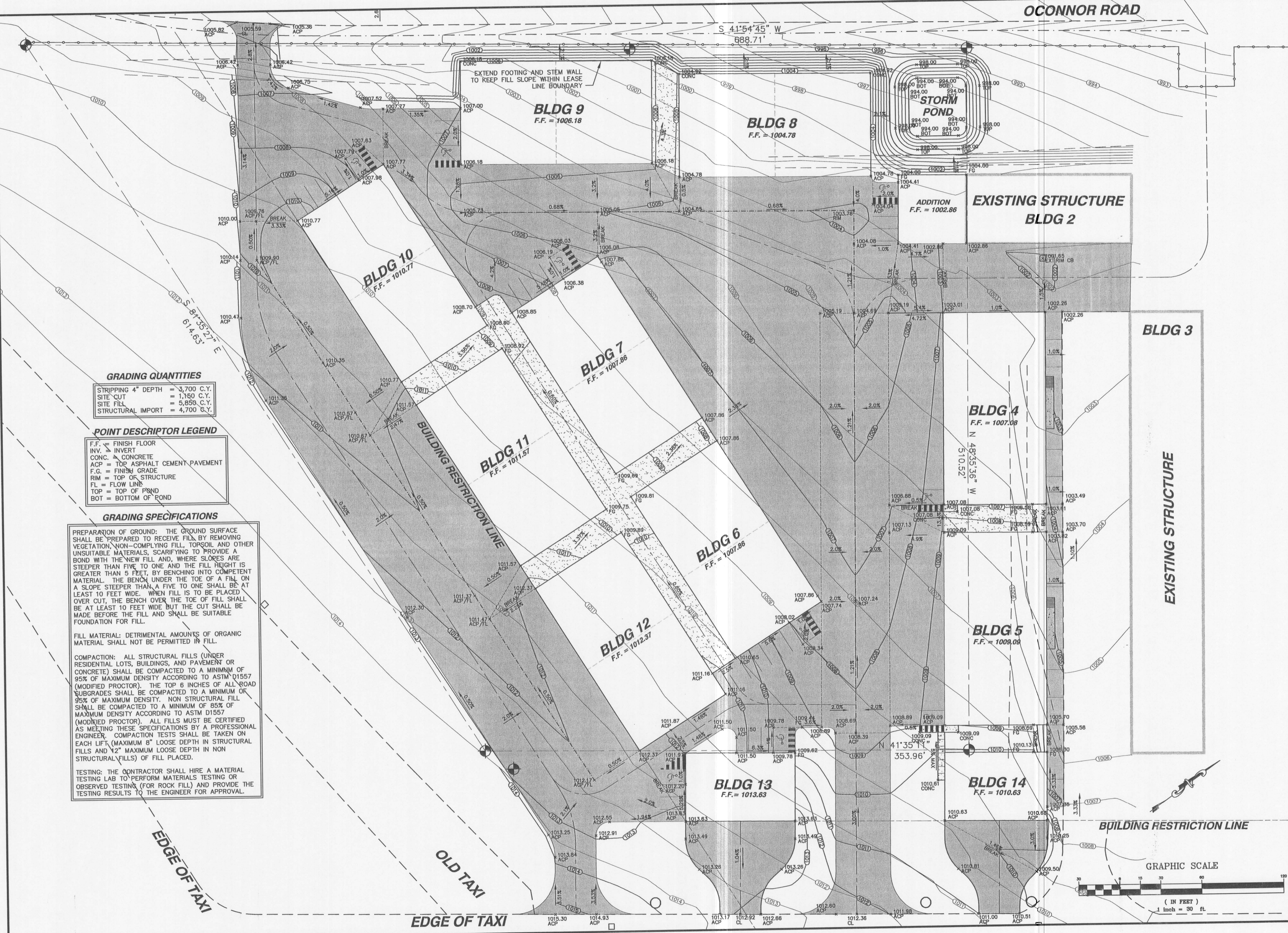


| NO. | DATE | BY | FILENAME | REVISIONS |
|-----|------|----|----------|-----------|
| | | | | |

ORIGINAL DRAWING

OCONNOR ROAD

S 41°54'45" W
688.71'



GRADING QUANTITIES

| | |
|--------------------|--------------|
| STRIPPING 4" DEPTH | = 3,700 C.Y. |
| SITE CUT | = 1,150 C.Y. |
| SITE FILL | = 5,850 C.Y. |
| STRUCTURAL IMPORT | = 4,700 C.Y. |

POINT DESCRIPTOR LEGEND

| | |
|-------|-------------------------------|
| F.F. | = FINISH FLOOR |
| INV. | = INVERT |
| CONC. | = CONCRETE |
| ACP | = TOP ASPHALT CEMENT PAVEMENT |
| F.G. | = FINISH GRADE |
| RIM | = TOP OF STRUCTURE |
| FL | = FLOW LINE |
| TOP | = TOP OF POND |
| BOT | = BOTTOM OF POND |

GRADING SPECIFICATIONS

PREPARATION OF GROUND: THE GROUND SURFACE SHALL BE PREPARED TO RECEIVE FILL BY REMOVING VEGETATION, NON-COMPLYING FILL, TOPSOIL AND OTHER UNSUITABLE MATERIALS, SCARIFYING TO PROVIDE A BOND WITH THE NEW FILL AND, WHERE SLORES ARE STEEPER THAN FIVE TO ONE AND THE FILL HEIGHT IS GREATER THAN 5 FEET, BY BENCHING INTO COMPETENT MATERIAL. THE BENCH UNDER THE TOE OF A FILL ON A SLOPE STEEPER THAN A FIVE TO ONE SHALL BE AT LEAST 10 FEET WIDE. WHEN FILL IS TO BE PLACED OVER CUT, THE BENCH OVER THE TOE OF FILL SHALL BE AT LEAST 10 FEET WIDE BUT THE CUT SHALL BE MADE BEFORE THE FILL AND SHALL BE SUITABLE FOUNDATION FOR FILL.

FILL MATERIAL: DETRIMENTAL AMOUNTS OF ORGANIC MATERIAL SHALL NOT BE PERMITTED IN FILL.

COMPACTION: ALL STRUCTURAL FILLS (UNDER RESIDENTIAL LOTS, BUILDINGS, AND PAVEMENT OR CONCRETE) SHALL BE COMPACTED TO A MINIMUM OF 95% OF MAXIMUM DENSITY ACCORDING TO ASTM D1557 (MODIFIED PROCTOR). THE TOP 6 INCHES OF ALL ROAD SUBGRADES SHALL BE COMPACTED TO A MINIMUM OF 95% OF MAXIMUM DENSITY. NON STRUCTURAL FILL SHALL BE COMPACTED TO A MINIMUM OF 85% OF MAXIMUM DENSITY ACCORDING TO ASTM D1557 (MODIFIED PROCTOR). ALL FILLS MUST BE CERTIFIED AS MEETING THESE SPECIFICATIONS BY A PROFESSIONAL ENGINEER. COMPACTION TESTS SHALL BE TAKEN ON EACH LIFT (MAXIMUM 8" LOOSE DEPTH IN STRUCTURAL FILLS AND 12" MAXIMUM LOOSE DEPTH IN NON STRUCTURAL FILLS) OF FILL PLACED.

TESTING: THE CONTRACTOR SHALL HIRE A MATERIAL TESTING LAB TO PERFORM MATERIALS TESTING OR OBSERVED TESTING (FOR ROCK FILL) AND PROVIDE THE TESTING RESULTS TO THE ENGINEER FOR APPROVAL.

| | | | | |
|-----|---------|-----|----------|---|
| NO. | DATE | BY | FILENAME | REVISIONS |
| 1 | 3-19-07 | CRF | | INCLUDED H.C. STALLS, GRADING REVISED IN VICINITY OF H.C. STALLS. |

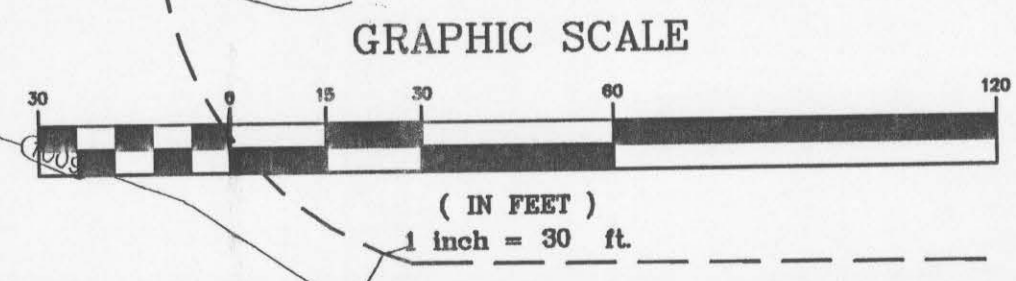


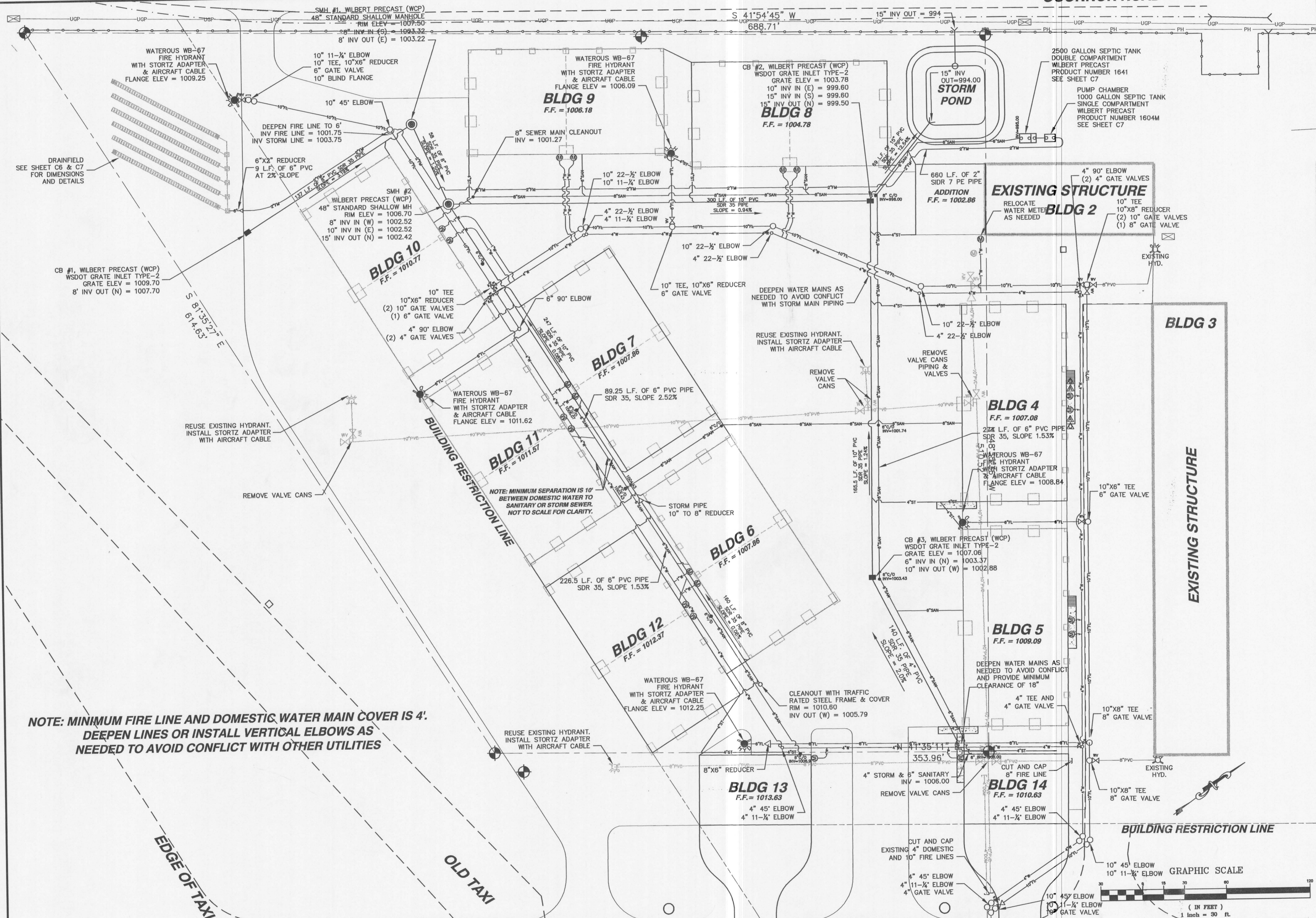
4025 EAGLE COURT
LAWYERVILLE, MO 64782
FAX (208) 750-1882
(208) 791-8045

NACLINE
ENGINEERING & DRAFTING
"an affordable alternative"

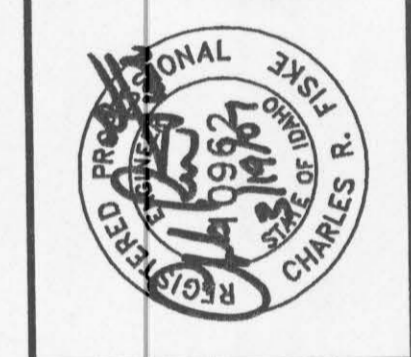
HILLCREST AIRCRAFT
HANGER PROJECT 2007
GRADING PLAN

| | | | |
|--------------|----------|-------------|-----|
| DRAWN BY: | CRF | CHECKED BY: | CRF |
| DESIGNED BY: | CRF | | |
| SCALE: | 1" = 30' | | |
| DATE: | 3/19/07 | | |
| PROJECT NO.: | 00071 | | |
| SHEET C3 | OF 11 | | |





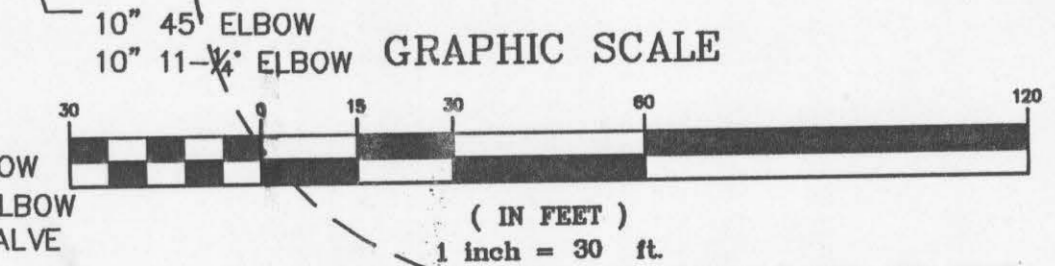
| NO. | DATE | BY | FILENAME | REVISIONS |
|-----|---------|-----|----------|---|
| 1 | 3-19-07 | CRF | | W.L. COVER 4" 1 SEWER LATERAL PER BUILDING. HEIGHT TO F.H. FLANGE 3". |

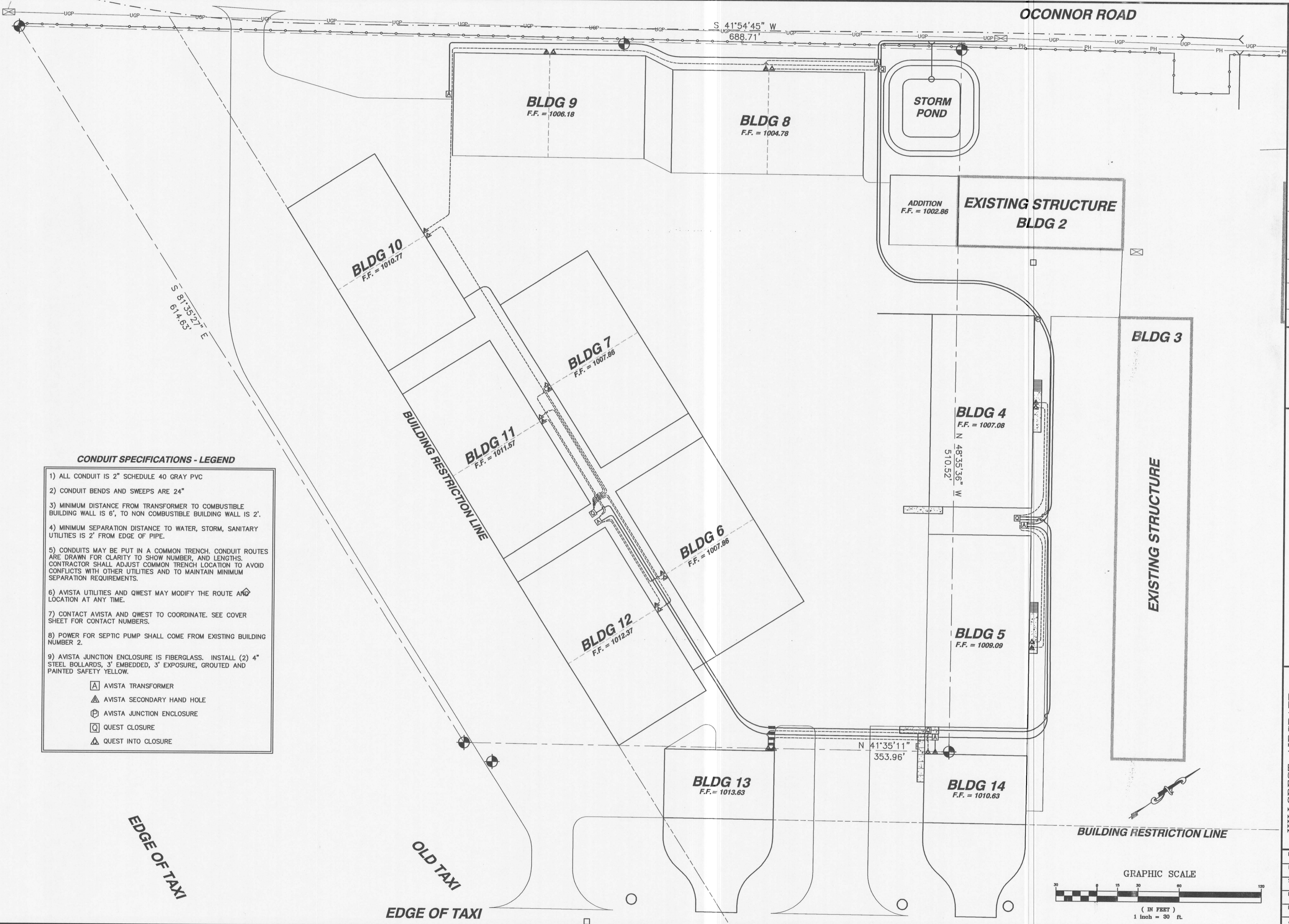


4025 EAGLE COURT
 HILLCREST AIRCRAFT HANGER PROJECT
 HILL CREST AIRCRAFT HANGER PROJECT 2007
 ENGINEERING & DRAFTING
 "an affordable alternative"
 (208) 791-8055

HILLCREST AIRCRAFT HANGER PROJECT 2007
UTILITY PLAN

| | |
|-------------------|-----------------|
| DRAWN BY: CRF | CHECKED BY: CRF |
| DESIGNED BY: CRF | |
| SCALE: 1" = 30' | |
| DATE: 3/19/07 | |
| PROJECT NO: 00071 | |
| SHEET C4 OF 11 | |





CONDUIT SPECIFICATIONS - LEGEND

- 1) ALL CONDUIT IS 2" SCHEDULE 40 GRAY PVC
 - 2) CONDUIT BENDS AND SWEEPS ARE 24"
 - 3) MINIMUM DISTANCE FROM TRANSFORMER TO COMBUSTIBLE BUILDING WALL IS 6', TO NON COMBUSTIBLE BUILDING WALL IS 2'.
 - 4) MINIMUM SEPARATION DISTANCE TO WATER, STORM, SANITARY UTILITIES IS 2' FROM EDGE OF PIPE.
 - 5) CONDUITS MAY BE PUT IN A COMMON TRENCH. CONDUIT ROUTES ARE DRAWN FOR CLARITY TO SHOW NUMBER, AND LENGTHS. CONTRACTOR SHALL ADJUST COMMON TRENCH LOCATION TO AVOID CONFLICTS WITH OTHER UTILITIES AND TO MAINTAIN MINIMUM SEPARATION REQUIREMENTS.
 - 6) AVISTA UTILITIES AND QWEST MAY MODIFY THE ROUTE AND LOCATION AT ANY TIME.
 - 7) CONTACT AVISTA AND QWEST TO COORDINATE. SEE COVER SHEET FOR CONTACT NUMBERS.
 - 8) POWER FOR SEPTIC PUMP SHALL COME FROM EXISTING BUILDING NUMBER 2.
 - 9) AVISTA JUNCTION ENCLOSURE IS FIBERGLASS. INSTALL (2) 4" STEEL BOLLARDS, 3' EXPOSURE, GROUTED AND PAINTED SAFETY YELLOW.
- AVISTA TRANSFORMER
 - AVISTA SECONDARY HAND HOLE
 - AVISTA JUNCTION ENCLOSURE
 - QUEST CLOSURE
 - QUEST INTO CLOSURE

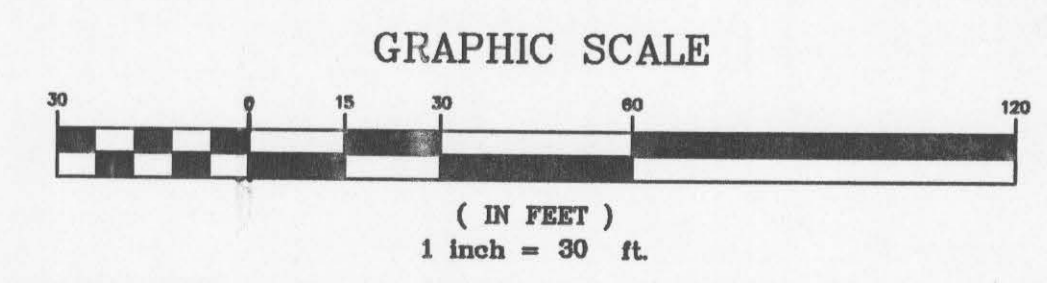
| | | | | |
|-----|---------|-----|----------|---------------------------------|
| NO. | DATE | BY | FILENAME | REVISIONS |
| 1 | 3-19-07 | CRF | | NOT INCLUDED IN FIRST SUBMITTAL |

CHARLES R. FIFE
PROFESSIONAL ENGINEER
LICENSE NO. 10001
STATE OF MISSOURI

NACLINE
ENGINEERING & DRAFTING
"an affordable alternative"

| | |
|---|---|
| <p>HILLCREST AIRCRAFT HANGER PROJECT 2007</p> | <p>CONDUIT PLAN POWER & PHONE</p> |
|---|---|

| | |
|---------------------|--------------------|
| DRAWN BY: CRF | CHECKED BY: CRF |
| DESIGNED BY: CRF | |
| SCALE: 1" = 30' | |
| DATE: 3/19/07 | |
| PROJECT NO.: 00071 | |
| SHEET C4.1 OF 11 | |



OCONNOR ROAD

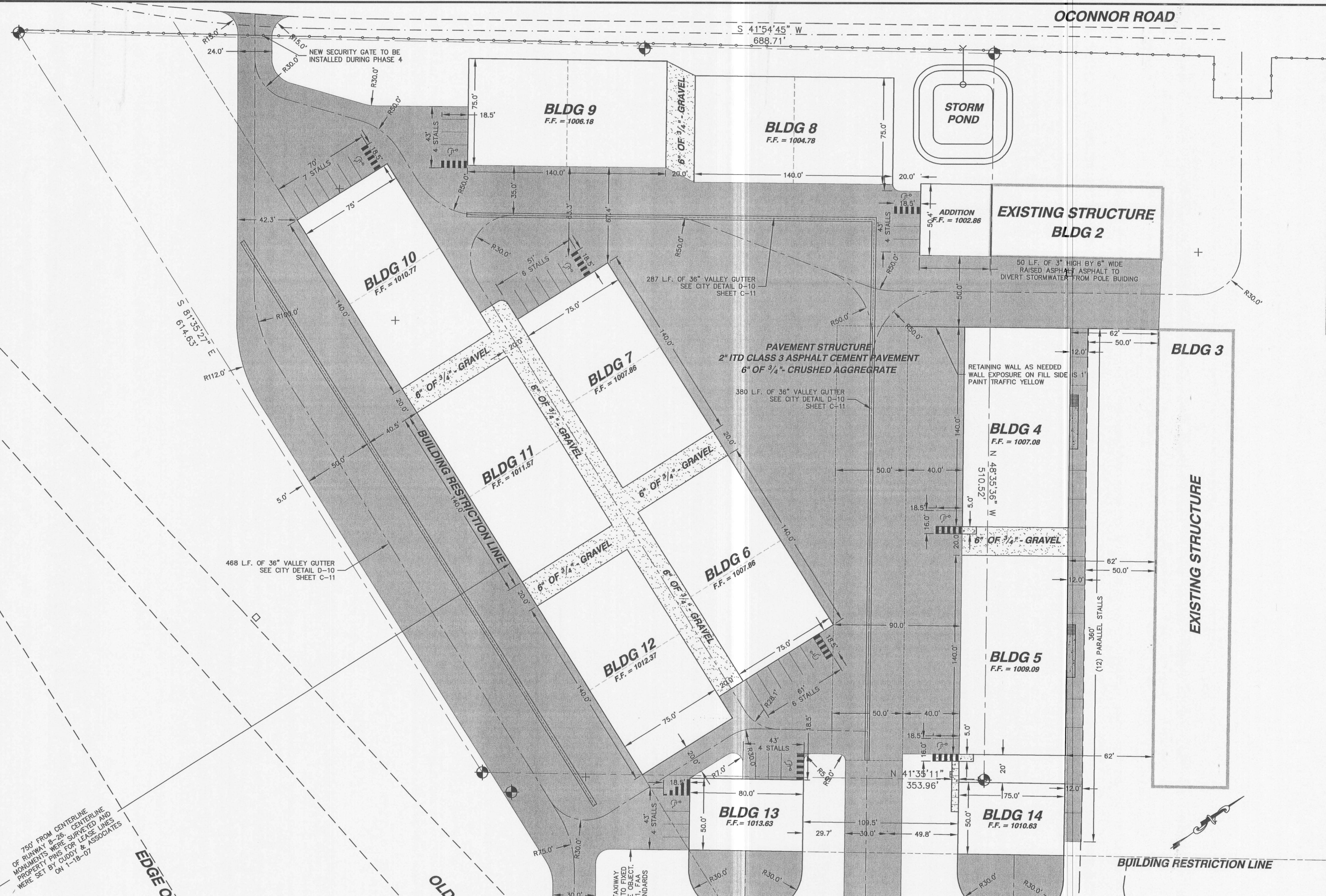
S 41°54'45" W
688.71'

S 81°35'21" E
614.65'

750' FROM CENTERLINE
OF RUNWAY 8-26. CENTERLINE
MONUMENTS WERE SURVEYED AND
PROPERTY PINS FOR LEASE LINES
WERE SET BY CUDDY & ASSOCIATES
ON 1-18-07

EDGE OF

OLD



| NO. | DATE | BY | FILENAME | REVISIONS |
|-----|---------|-----|----------|------------------------|
| 1 | 3-19-07 | CRF | | INCLUDED I.L.C. STALLS |



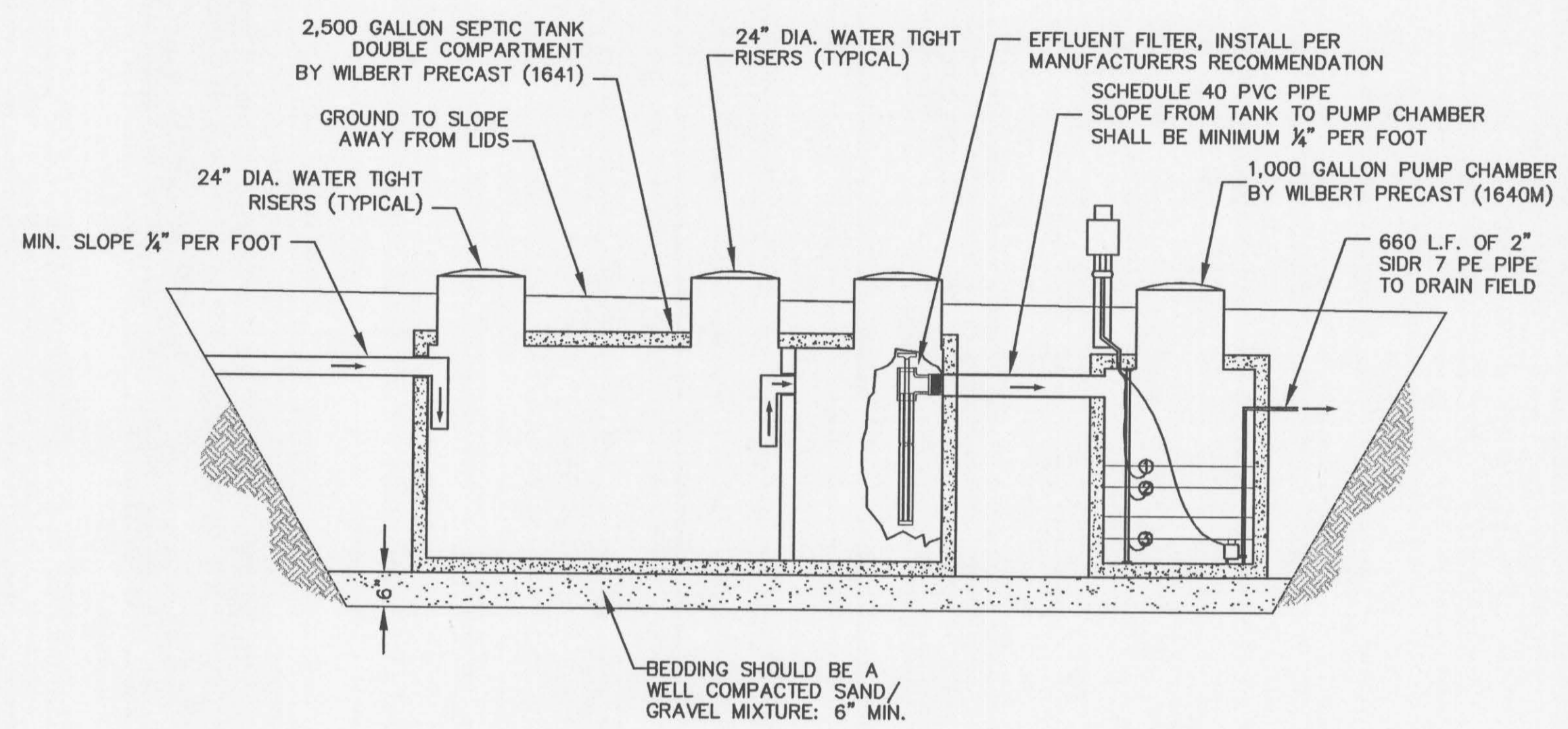
MACLINE
ENGINEERING & DRAFTING
"an affordable alternative"

408 EAGLE COURT
LEWISTON, IDAHO 83501
FAX: (208) 790-1032
(208) 791-8055

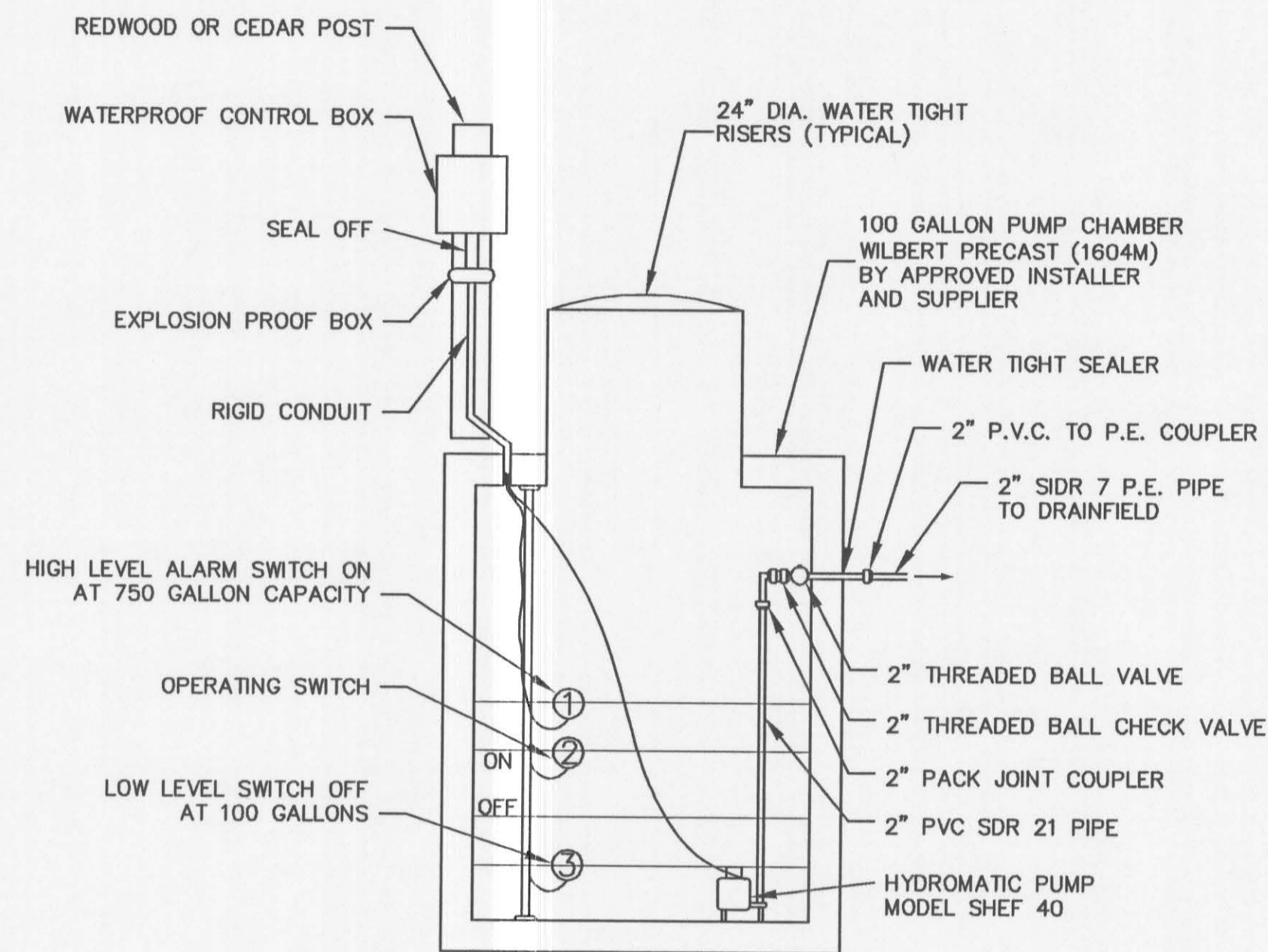
HILLCREST AIRCRAFT
HANGER PROJECT 2007
CIVIL PLAN

DRAWN BY: CRF
CHECKED BY: CRF
DESIGNED BY:

ORIGINAL DRAWING

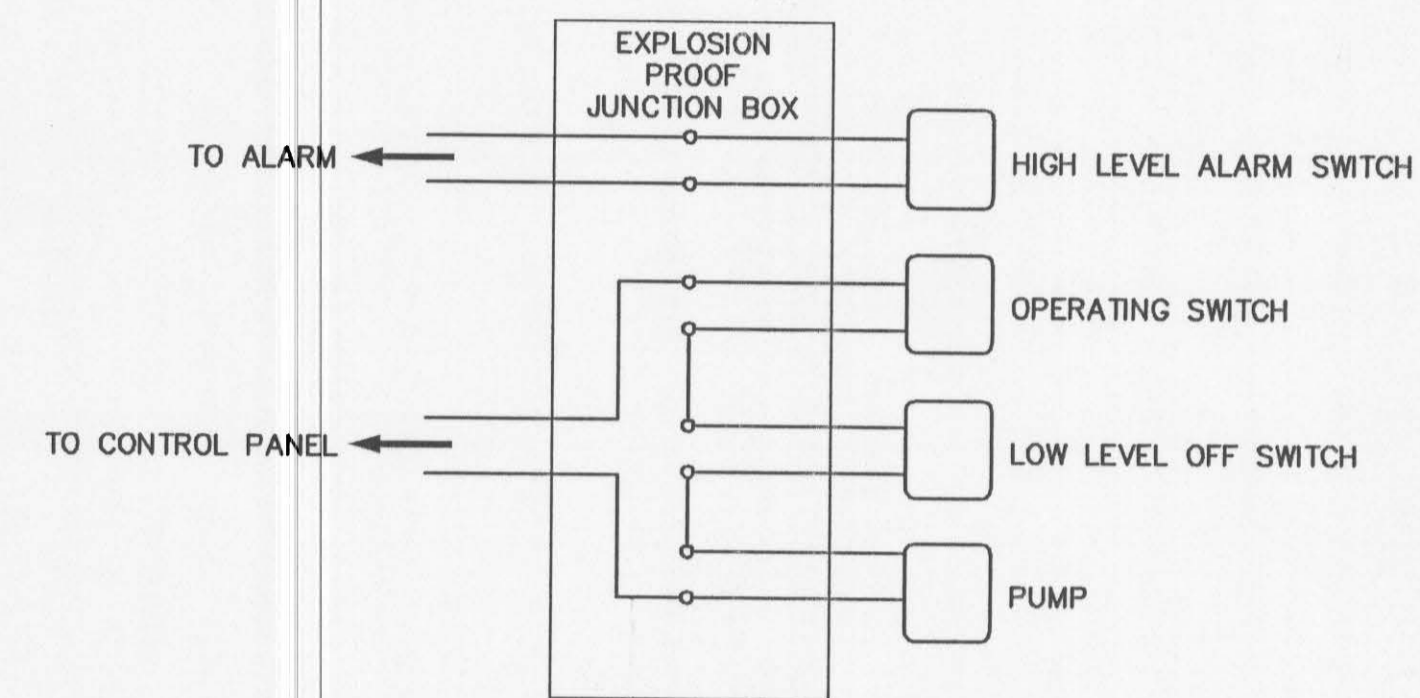


SEPTIC TANK - PUMP CHAMBER SECTION
NOT TO SCALE

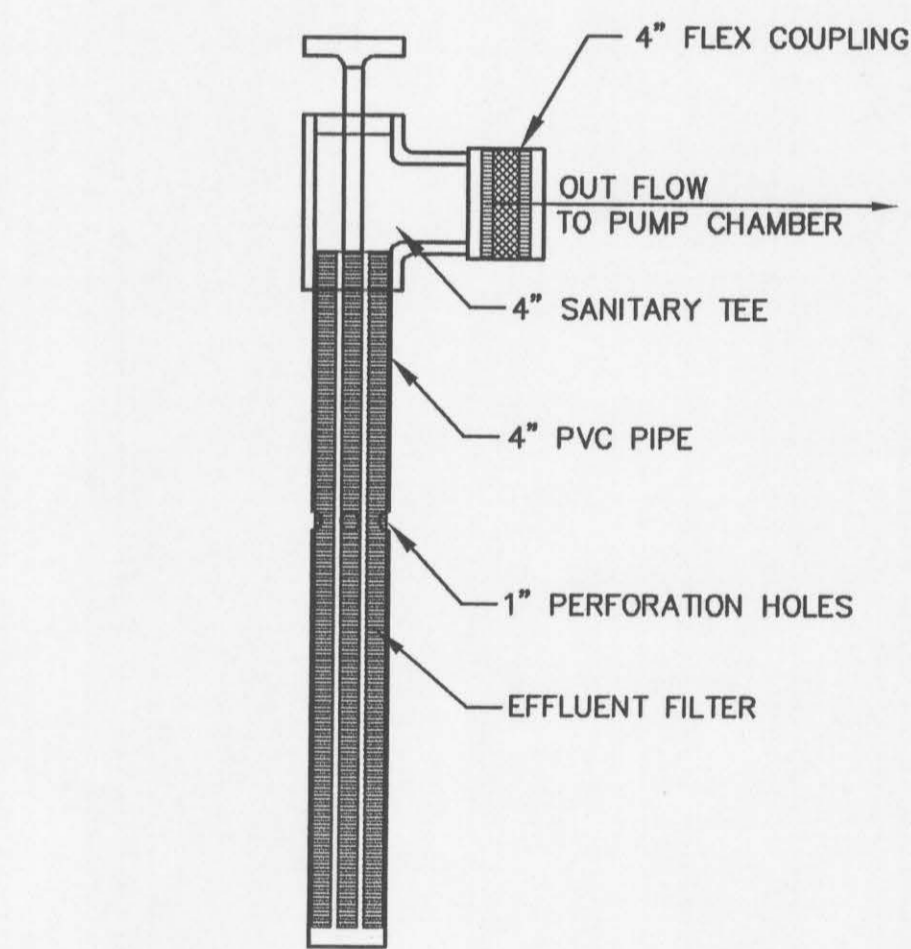


PUMP CHAMBER DETAIL
NOT TO SCALE

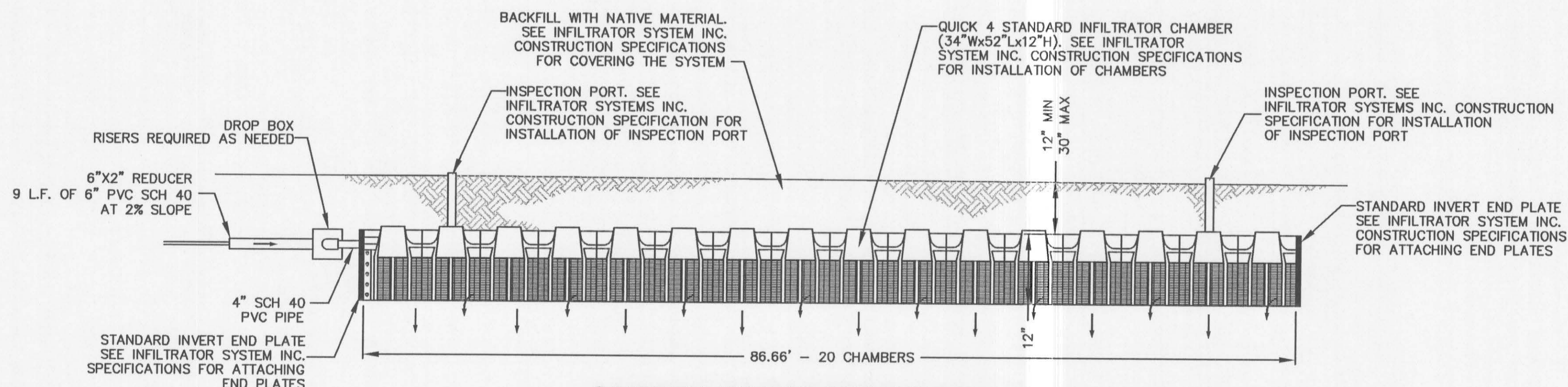
PUMP SPECIFICATIONS:
TOTAL LOADING IS = 1100 GAL/DAY
PUMP SHALL CYCLE TWICE A DAY AT 550 GAL/CYCLE.
CONTRACTOR SHALL SELECT PUMP BASED ON INSTALLED
TOTAL DYNAMIC HEAD AND INSTALLED LENGTH OF 2" P.E. PIPE.
LINE VELOCITY SHALL BE GREATER THAN 2 FEET PER SECOND
AND LESS THAN 7 FEET PER SECOND.



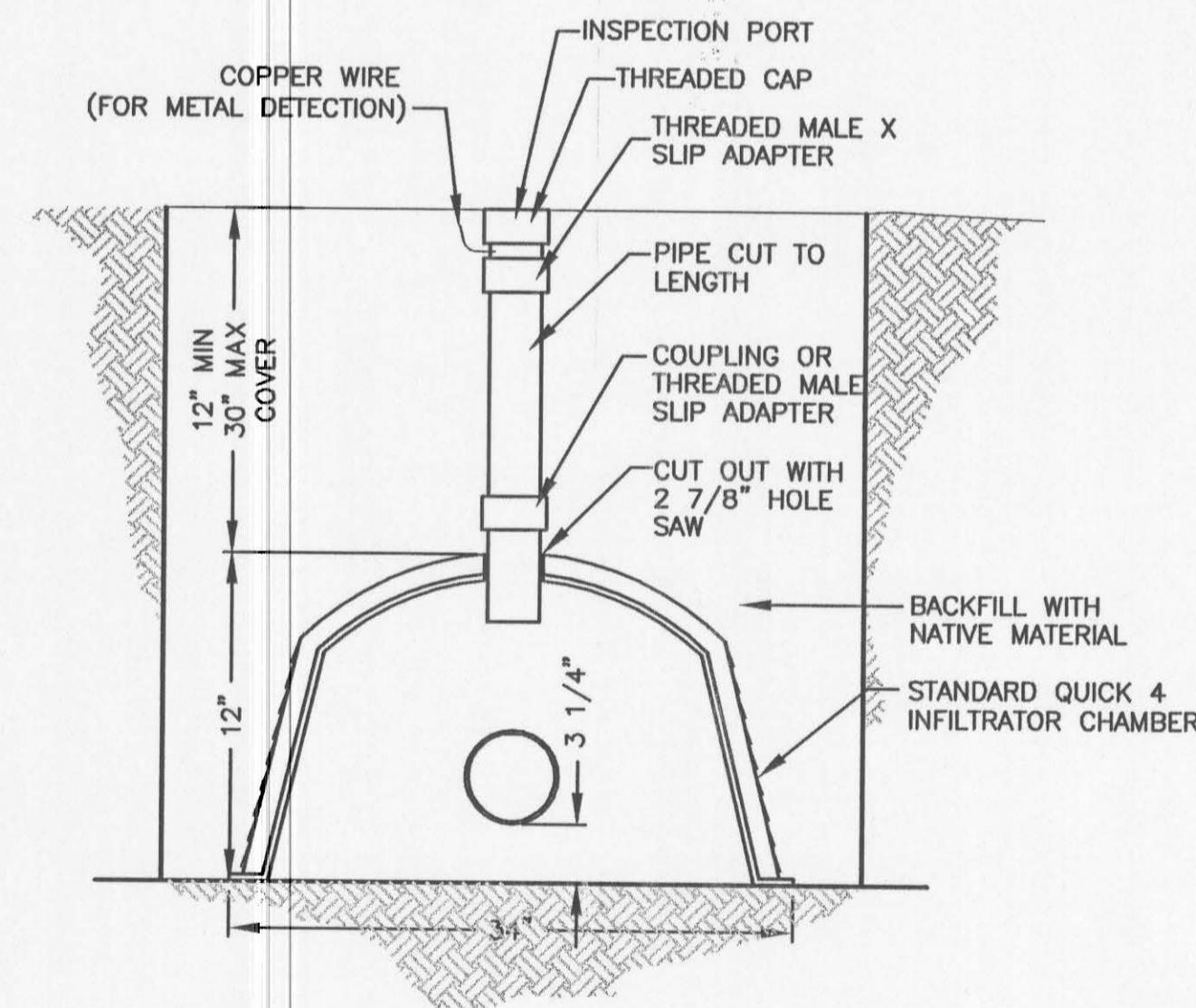
ACCEPTABLE CIRCUIT DETAIL
NOT TO SCALE



**SANITARY TEE
W/ EFFLUENT FILTER**
NOT TO SCALE



CAMBER CROSS SECTION DETAIL
NOT TO SCALE



NOTE:
FOLLOW INFILTRATOR SYSTEM INC. SPECIFICATIONS FOR INSTALLATION

TRENCH CROSS-SECTION
NOT TO SCALE

| | | | | |
|-----------|----------|----|------|-----|
| REVISIONS | FILENAME | BY | DATE | NC. |
| | | | | |
| | | | | |
| | | | | |
| | | | | |

ORIGINAL DRAWING

PROFESSIONAL SEAL
REGISTERED PROFESSIONAL ENGINEER
STATE OF CALIFORNIA
NO. 49562
CHANCELS

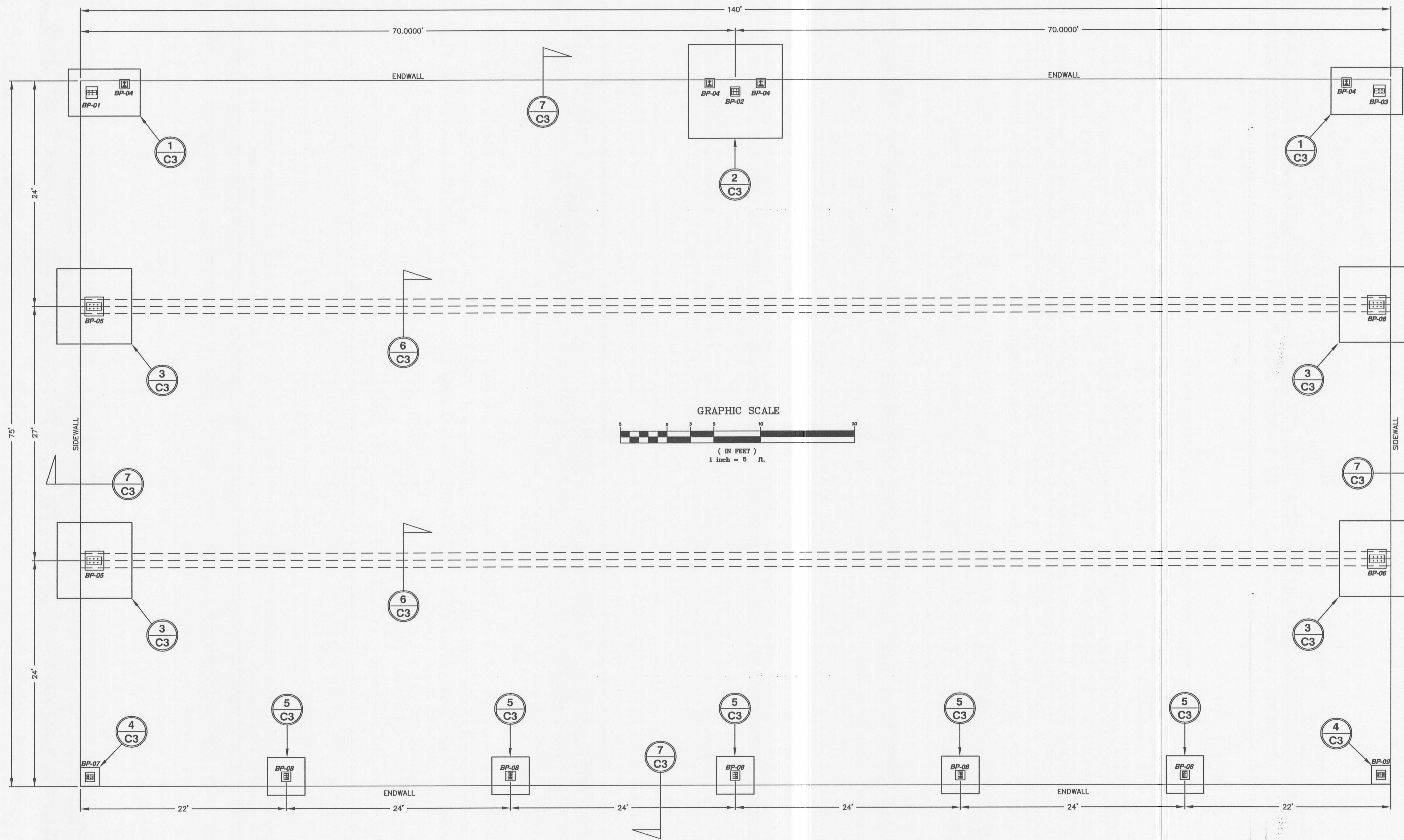
4025 EAGLE COURT
LEAVENWORTH, KS 66543
TEL (785) 750-1282
FAX (785) 750-1282
(208) 751-8055

NACLINE
ENGINEERING & DRAFTING
"an affordable alternative"

HILLCREST AIRCRAFT
HANGER PROJECT 2007

SEPTIC SECTIONS
AND DETAILS

| | |
|-----------------------|--------------------|
| DRAWN BY: CRF | CHECKED BY: CRF |
| DESIGNED BY: CRF | |
| SCALE: N.T.S. | |
| DATE: 2/5/07 | |
| PROJECT NO.: 00071 | |
| SHEET C7 | OF 11 |



| NO. | DATE | BY | FILENAME | REVISIONS |
|-----|------|----|----------|-----------|
| 0 | | | | |

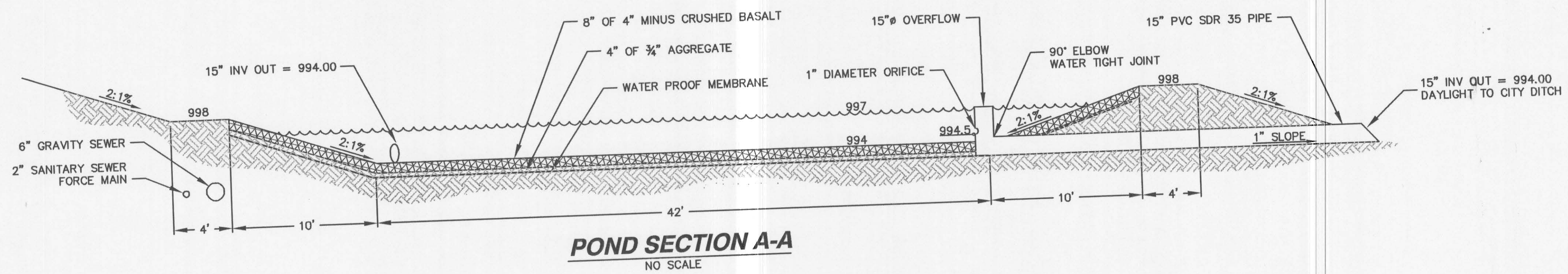
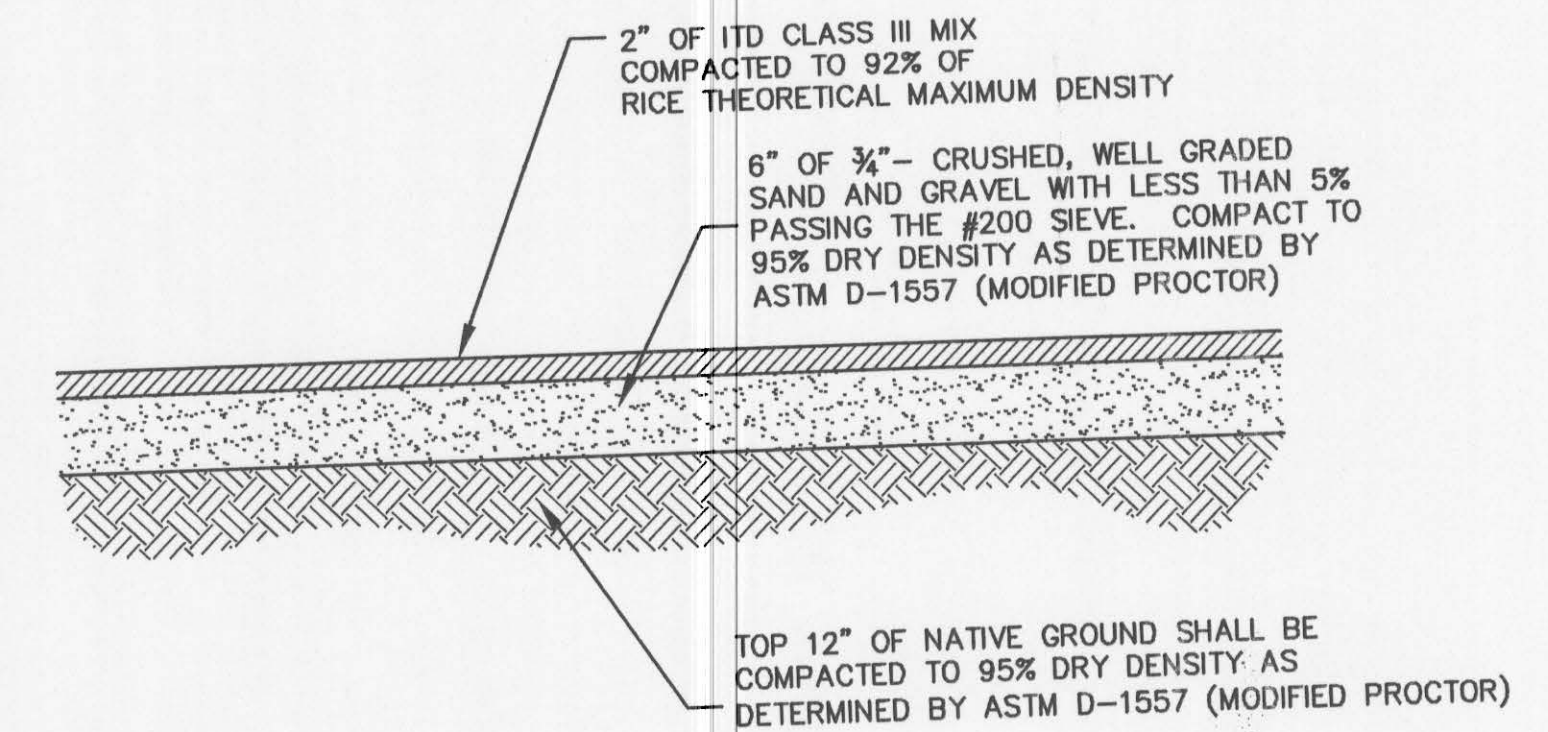
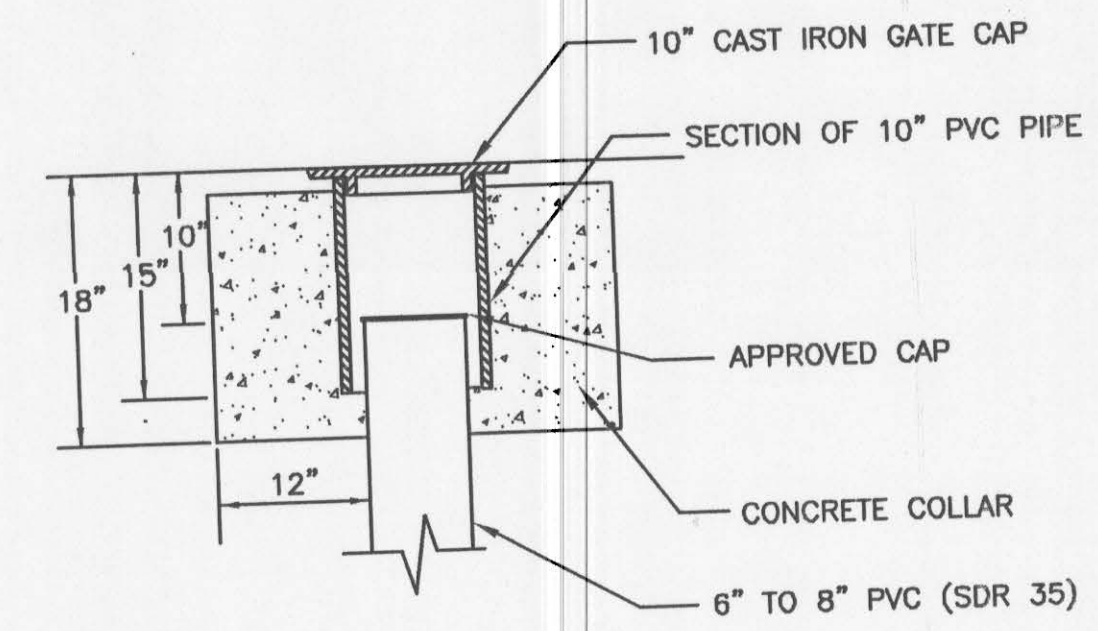
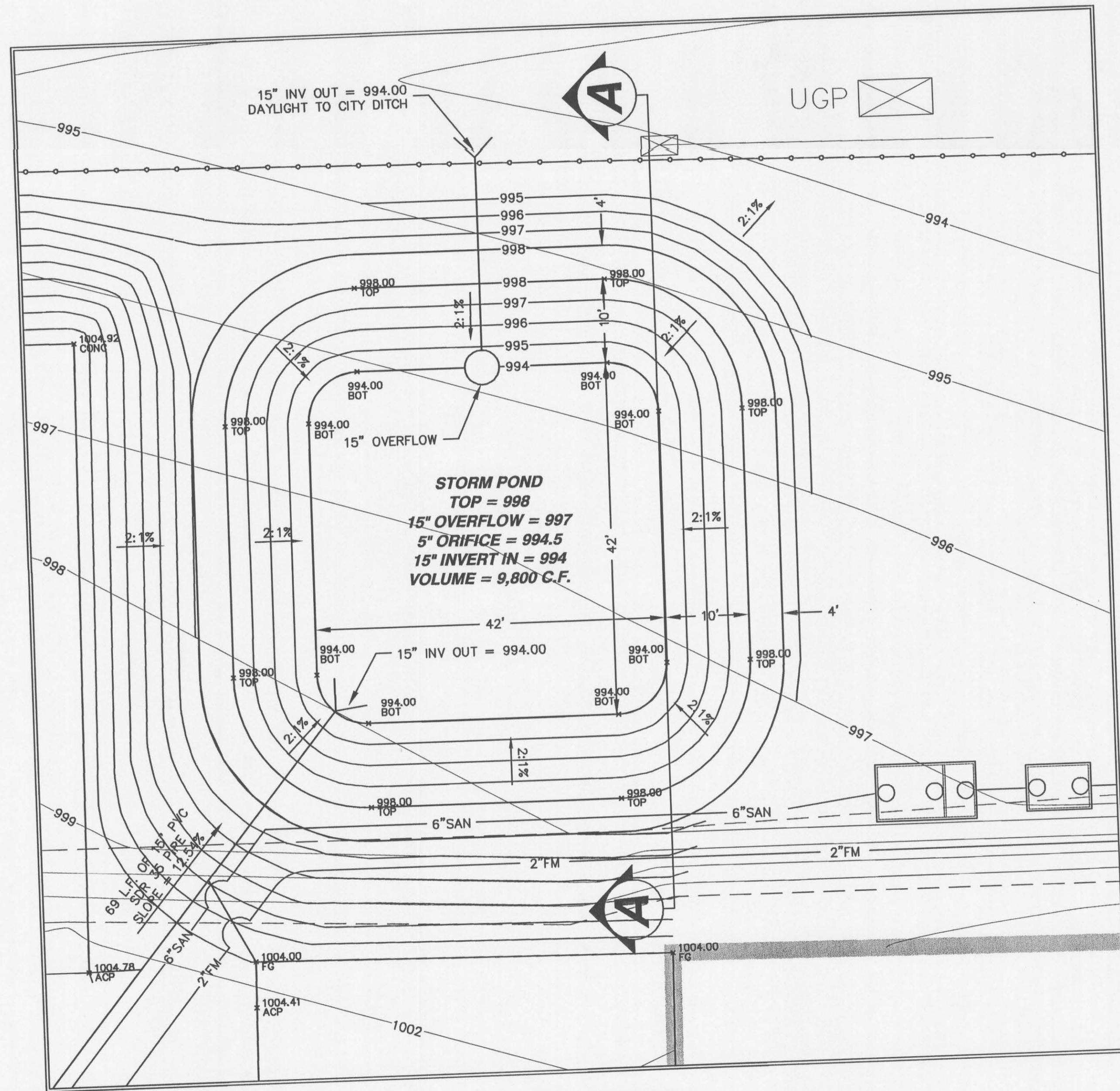


4000 EAGLE COURT
 LEWISTON, IDAHO 83501
 FAX (208) 750-1082
 (208) 791-0605

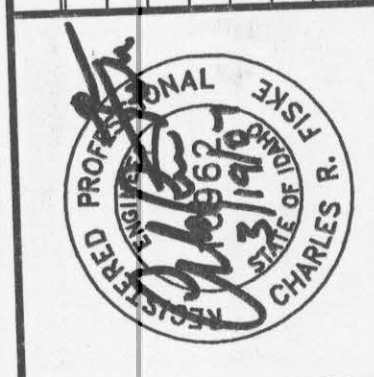
NACLINÉ
 ENGINEERING & DRAFTING
 "an affordable alternative"

**HILLCREST AIRCRAFT
 HANGER PROJECT 2007
 FOUNDATION PLAN**

| | |
|-----------------------|--------------------|
| DRAWN BY: CRF | CHECKED BY: CRF |
| DESIGNED BY: CRF | |
| SCALE: 1" = 5' | |
| DATE: 2/5/07 | |
| PROJECT NO.: 00071 | |
| SHEET C8 | OF 11 |



| NO. | DATE | BY | FILENAME | REVISIONS |
|-----|---------|-----|----------|-----------------------|
| 1 | 3-15-07 | CRF | | ORIFICE REDUCED TO 1" |

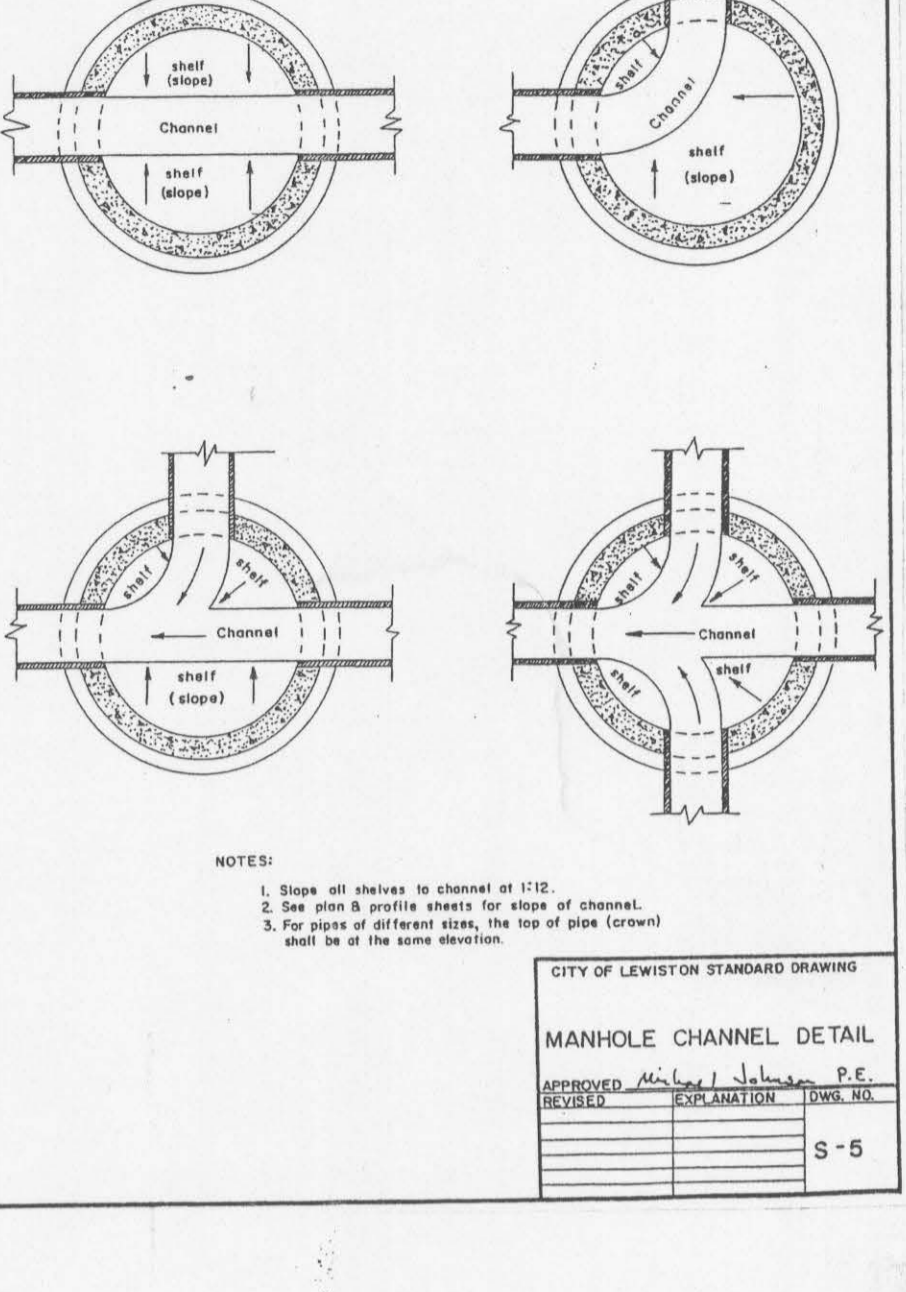
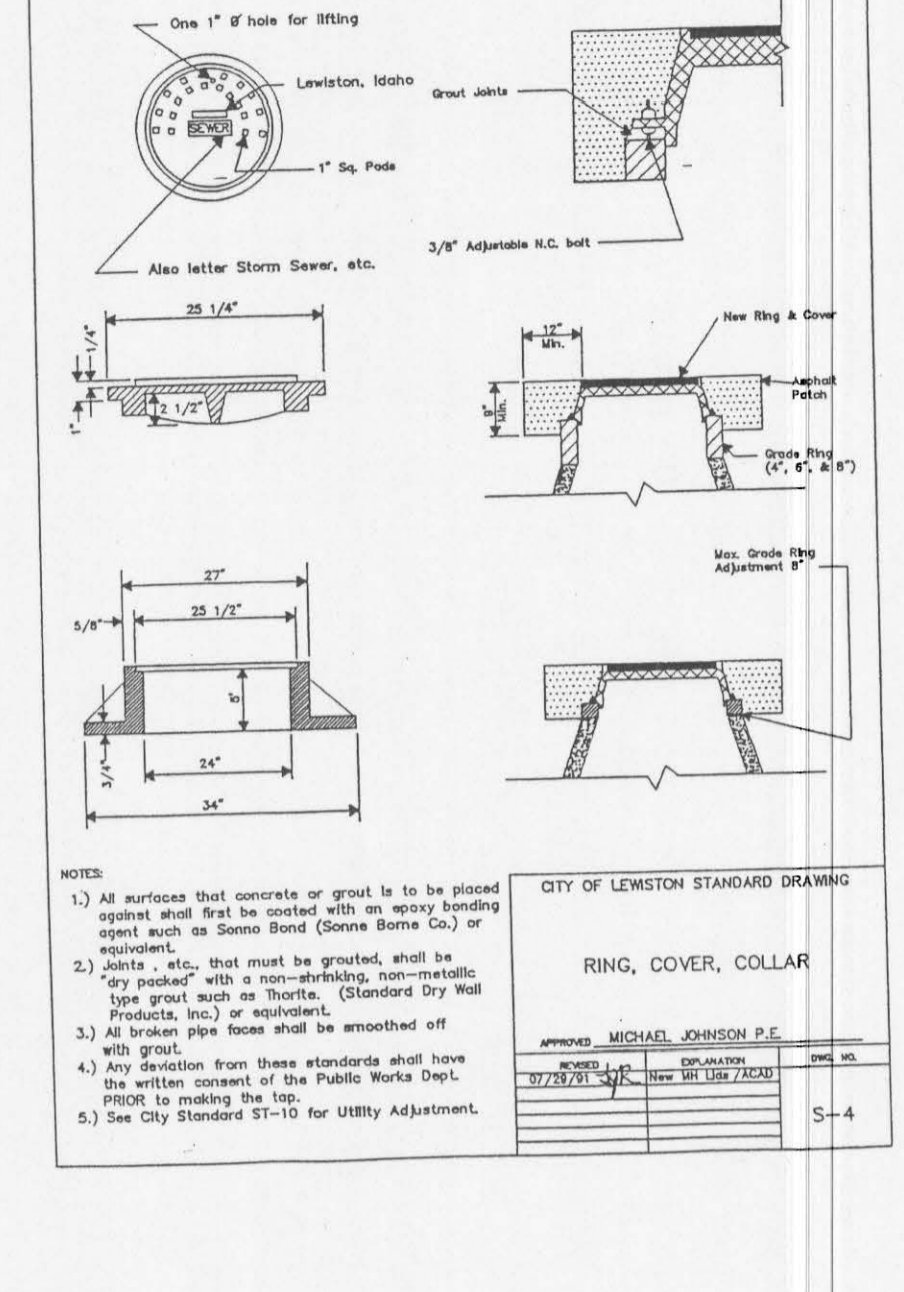
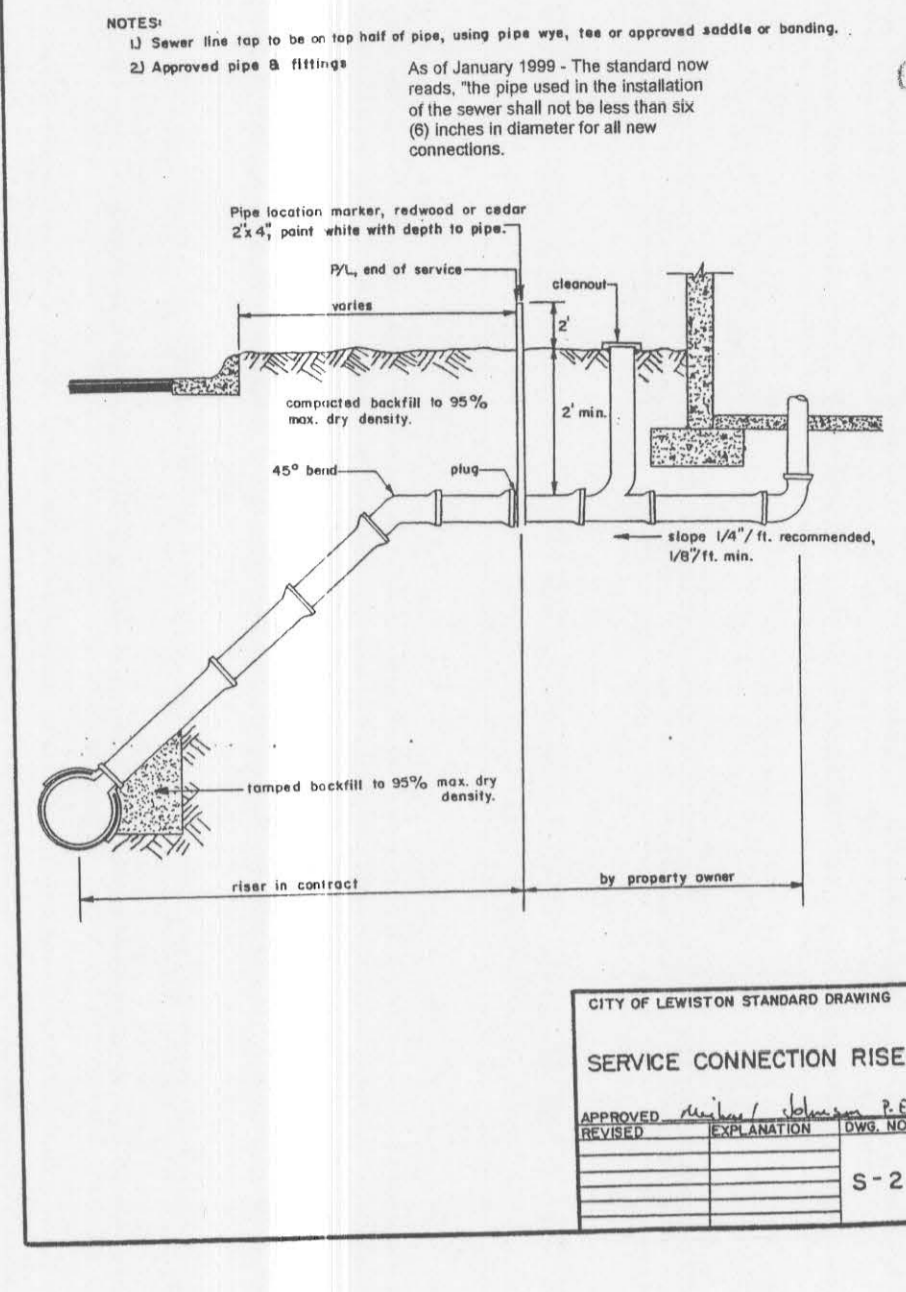
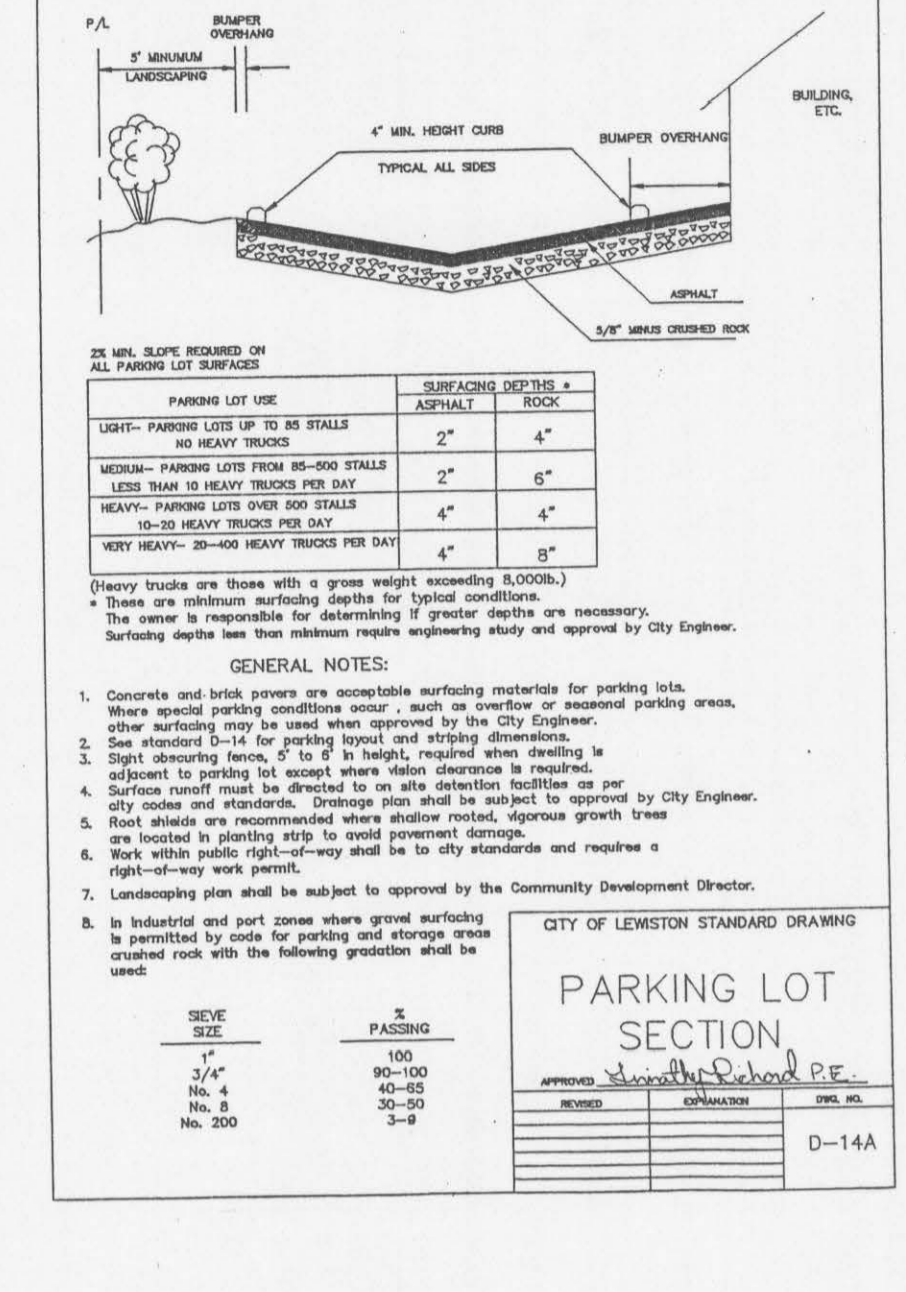
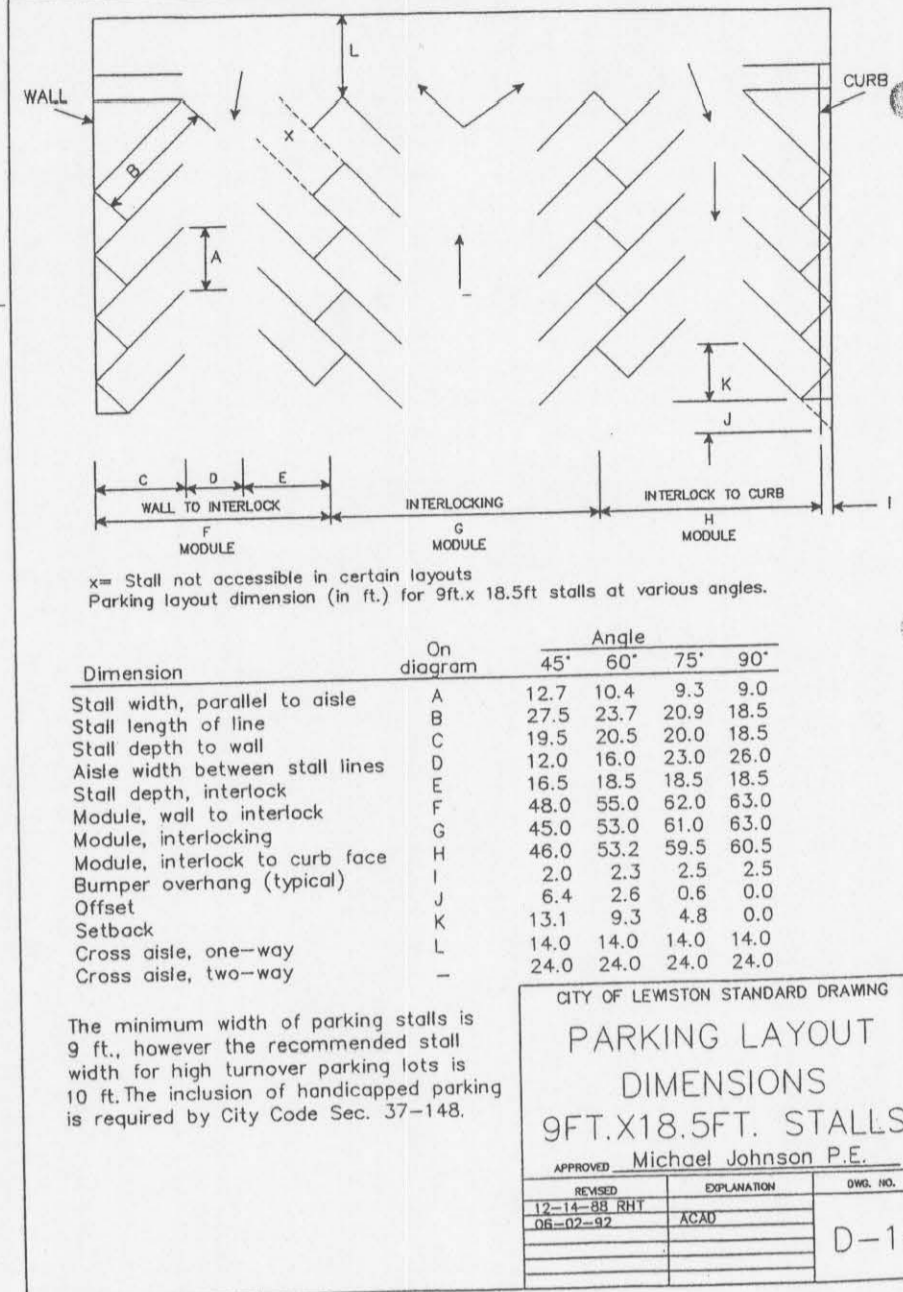
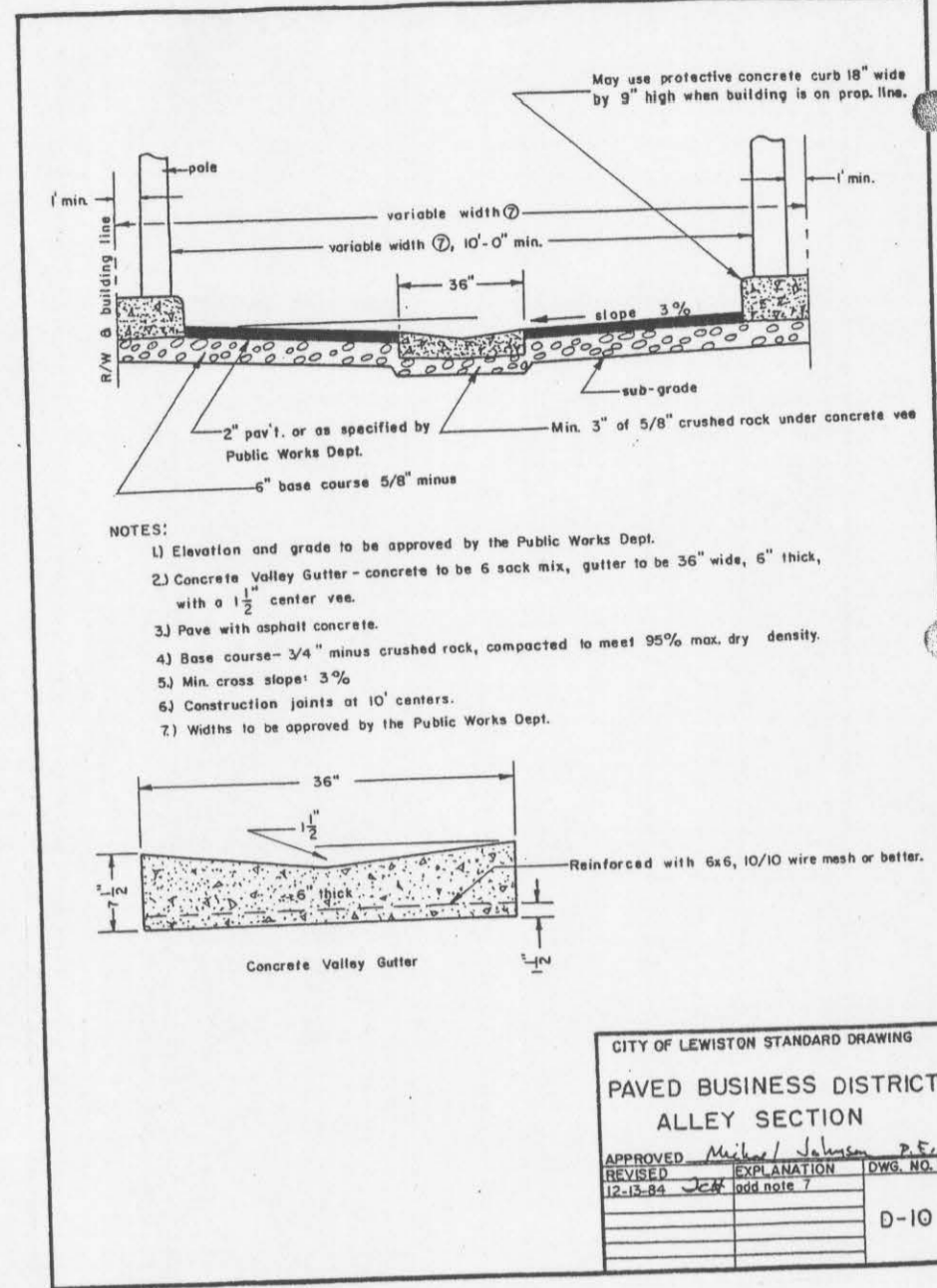


4025 EAGLE COURT, SUITE 101
LAKELAND, FLORIDA 33801
TEL: (888) 750-1082
FAX: (202) 750-1082
(208) 791-8085

NACLINE
ENGINEERING & DRAFTING
"an affordable alternative"

HILLCREST AIRCRAFT
HANGER PROJECT 2007
SECTION & DETAILS

| | | | |
|--------------|---------|-------------|-----|
| DRAWN BY: | CRF | CHECKED BY: | CRF |
| DESIGNED BY: | CRF | | |
| SCALE: | 1" = 5' | | |
| DATE: | 2/5/07 | | |
| PROJECT NO.: | 00071 | | |

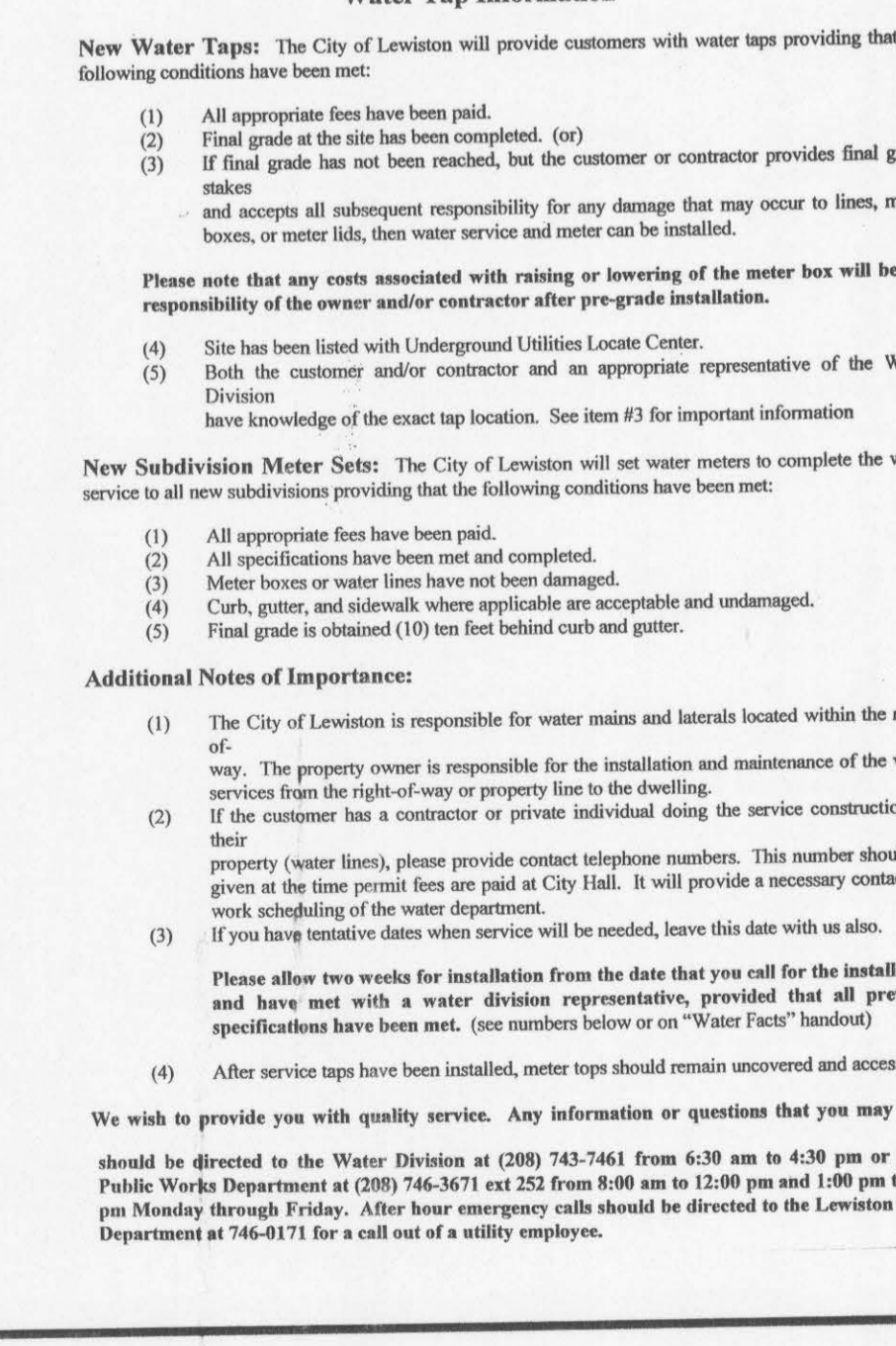
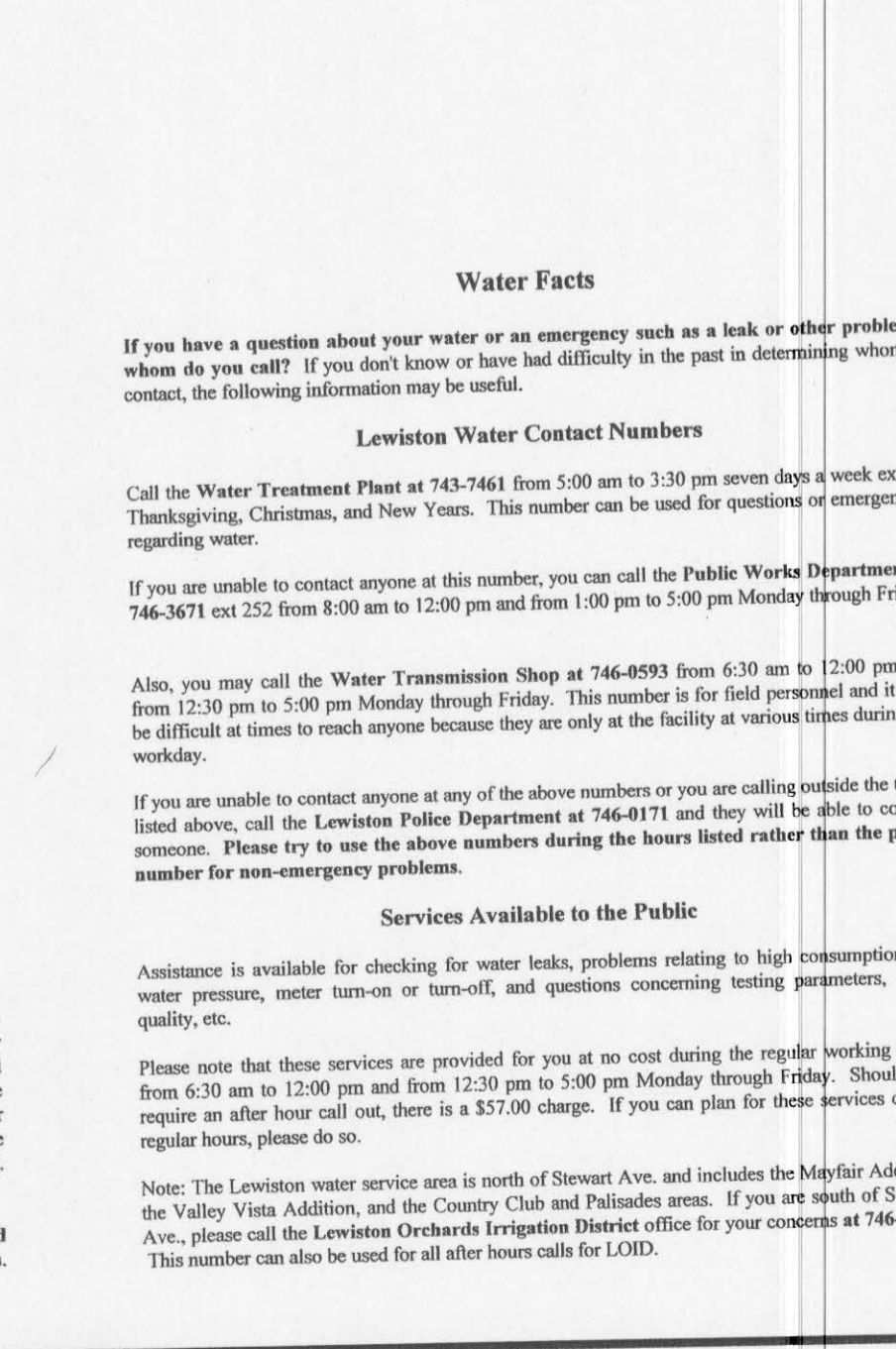
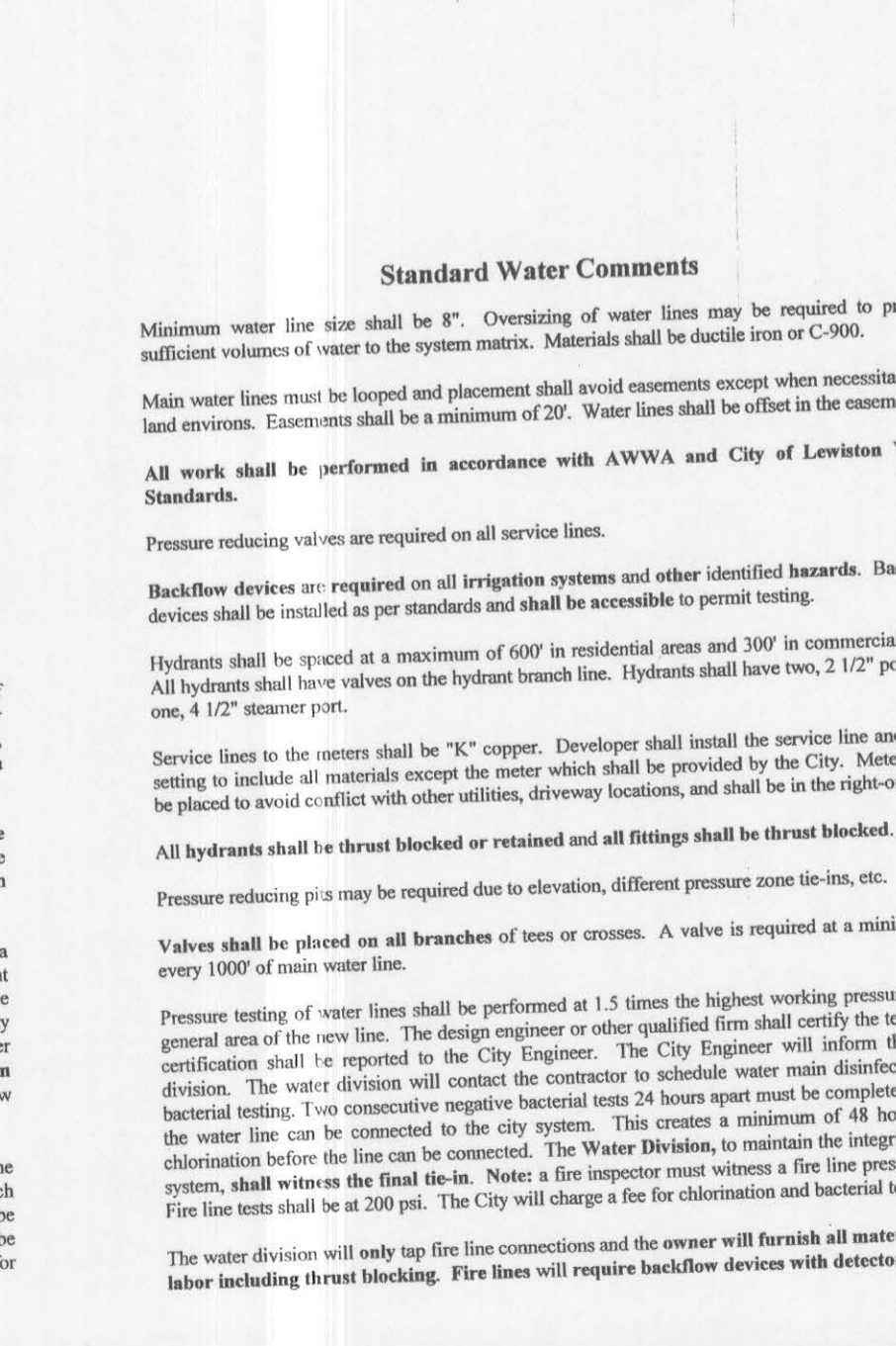
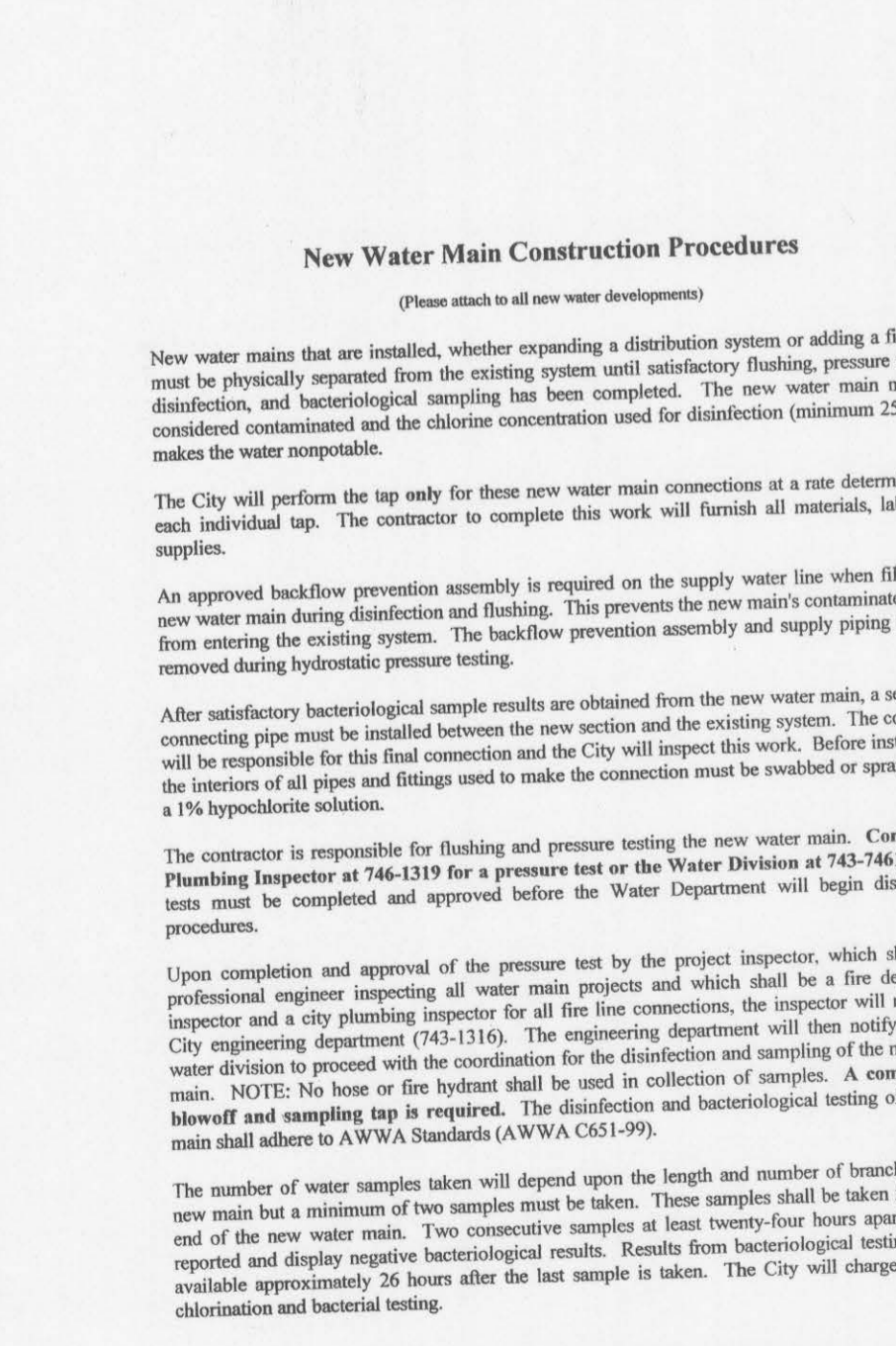
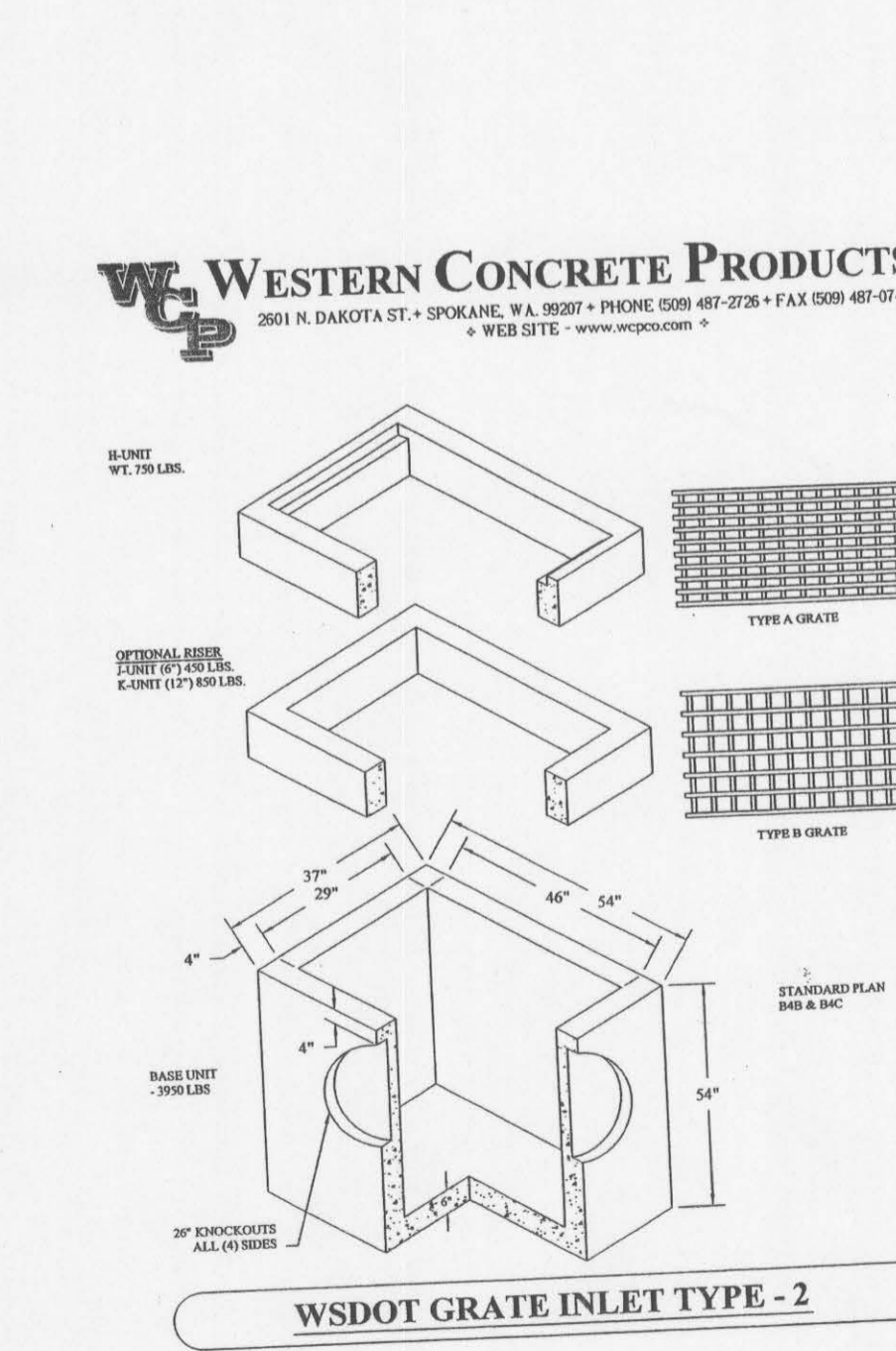
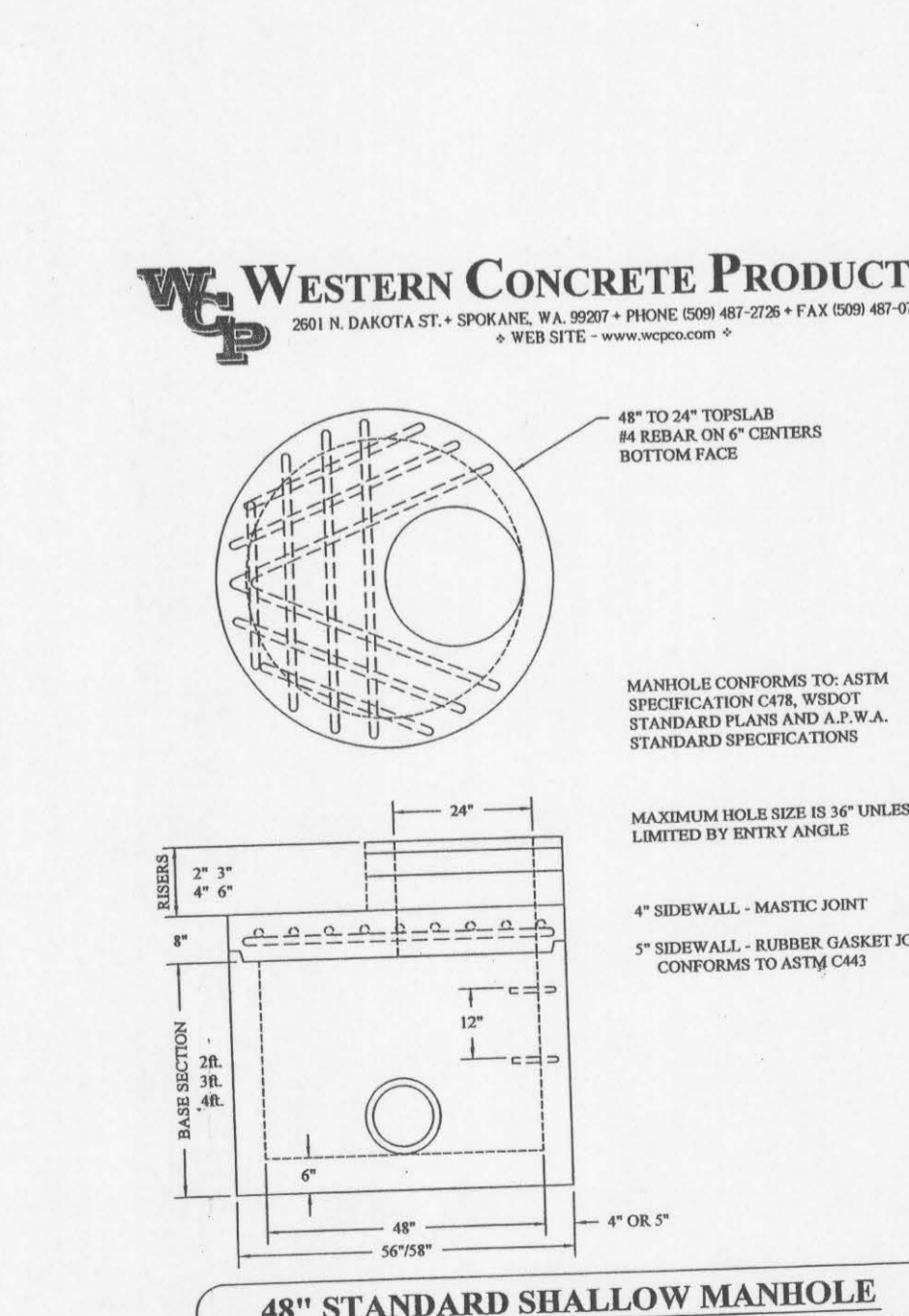
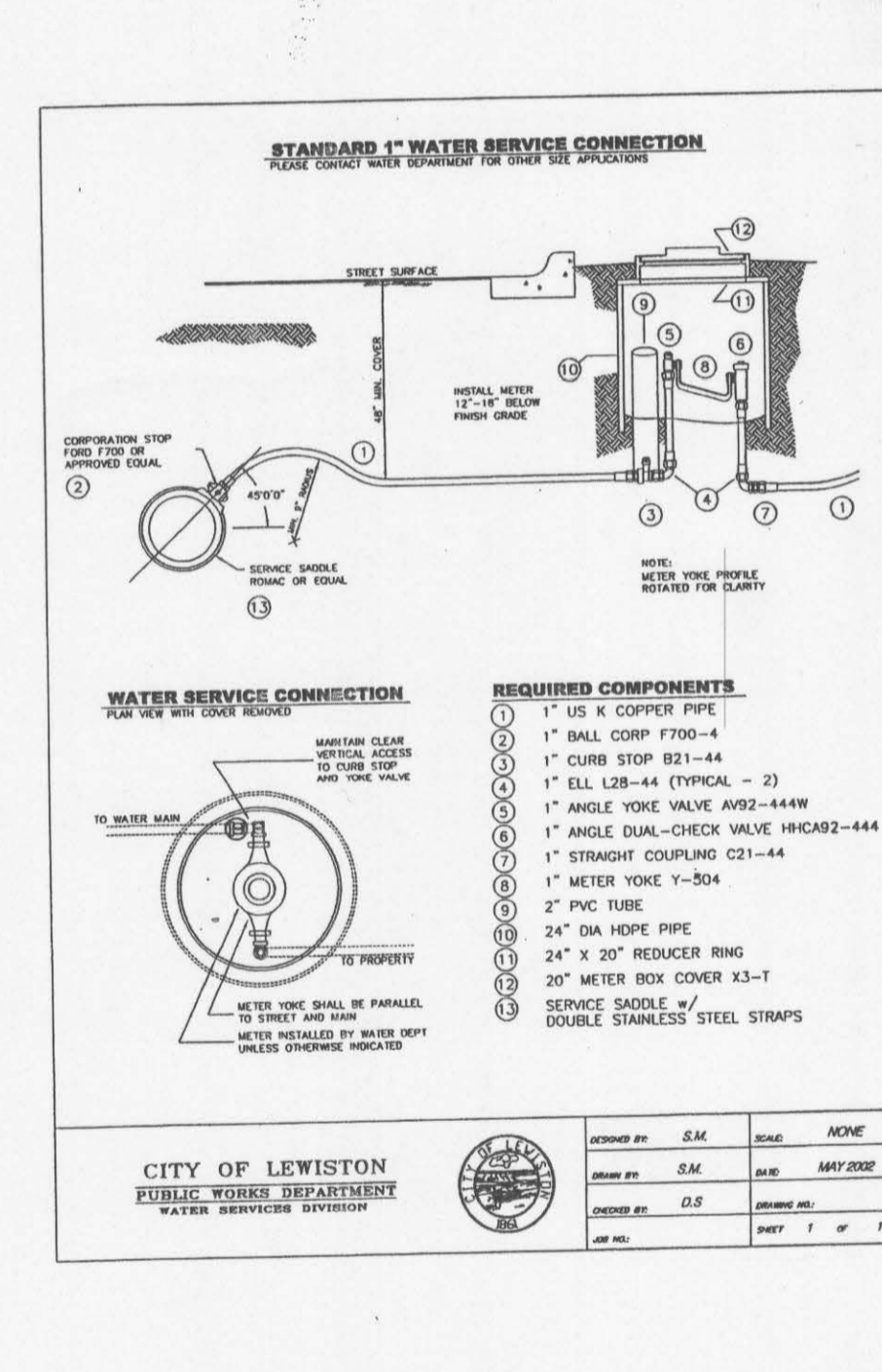
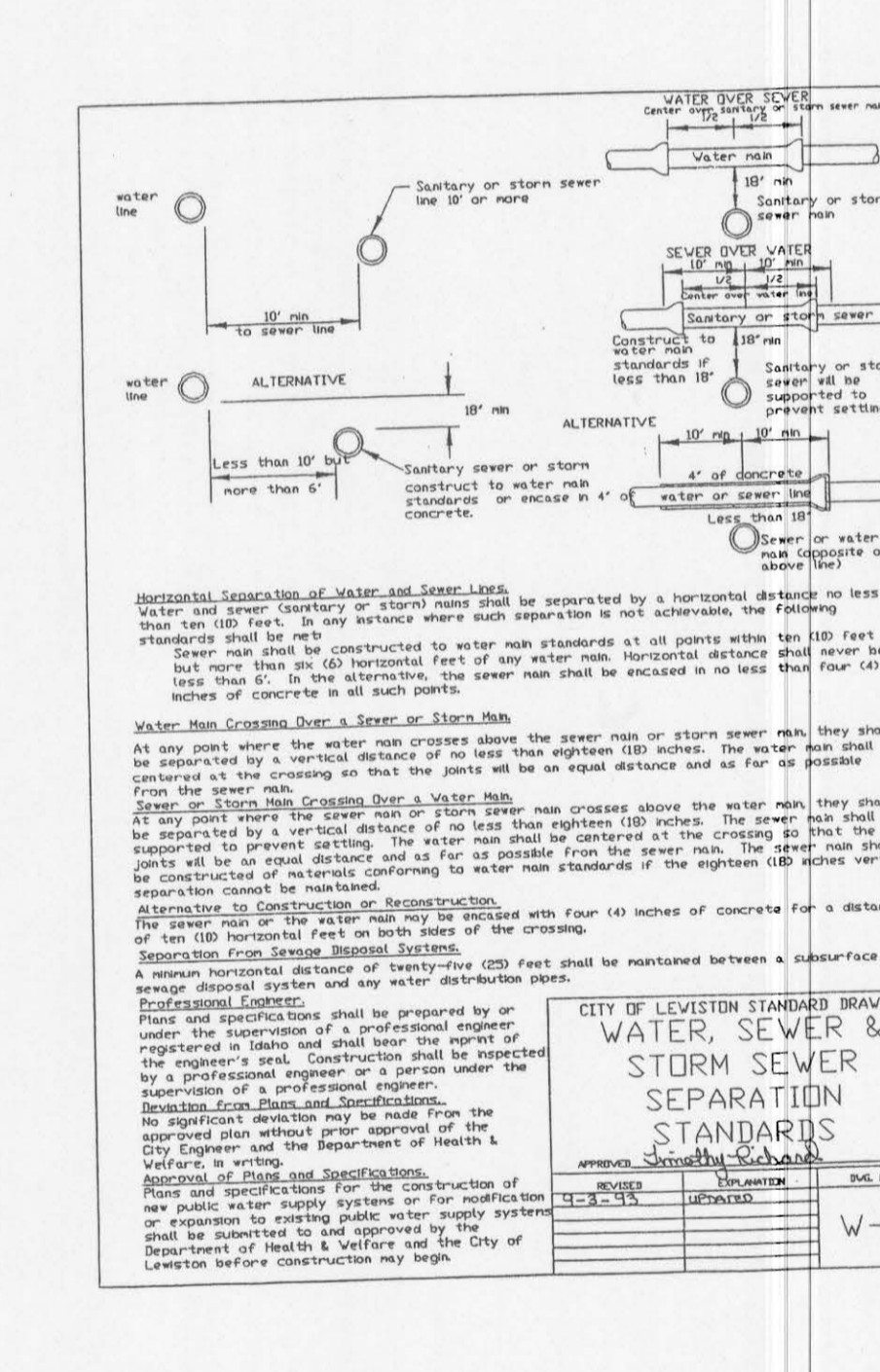
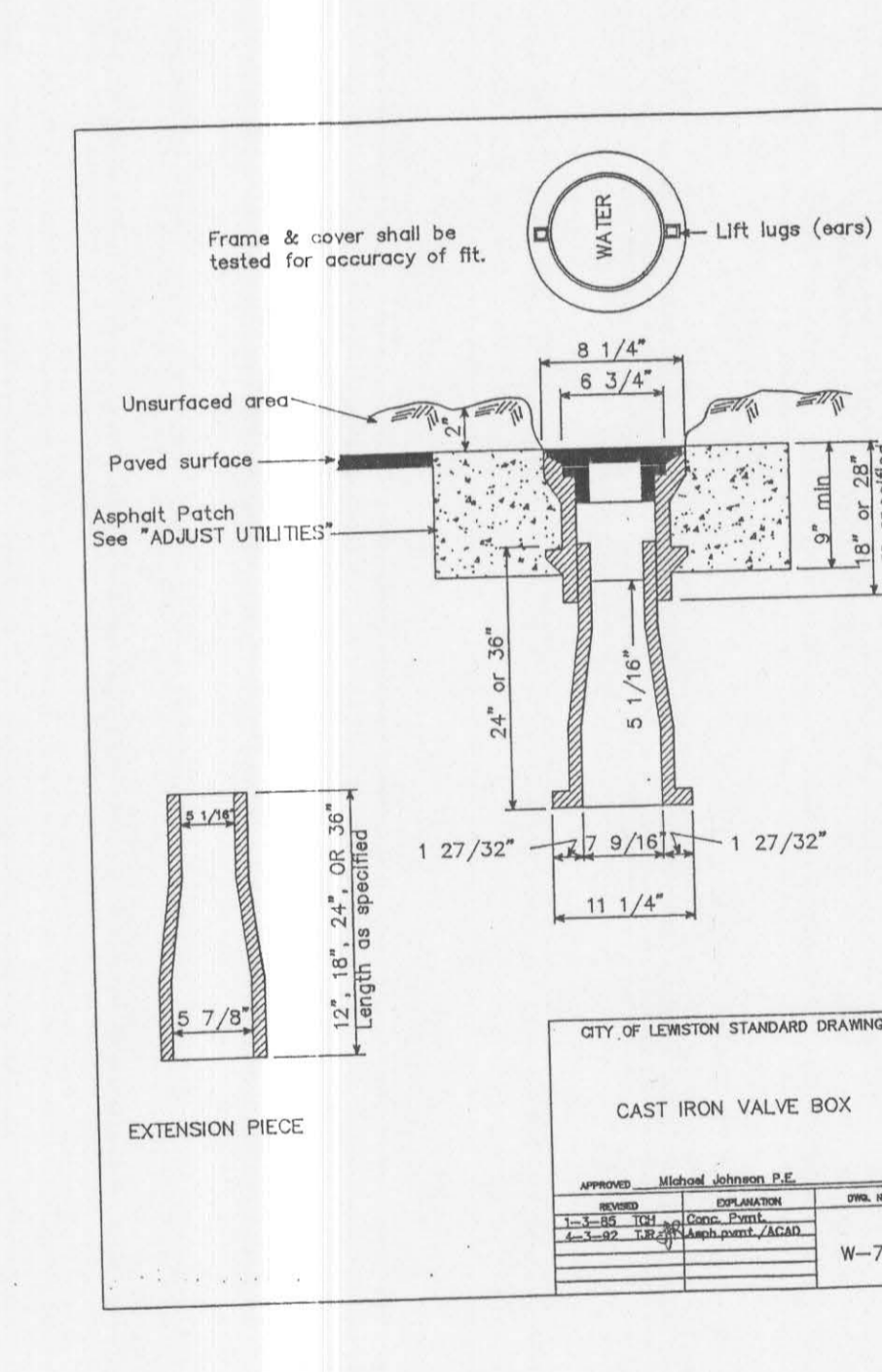
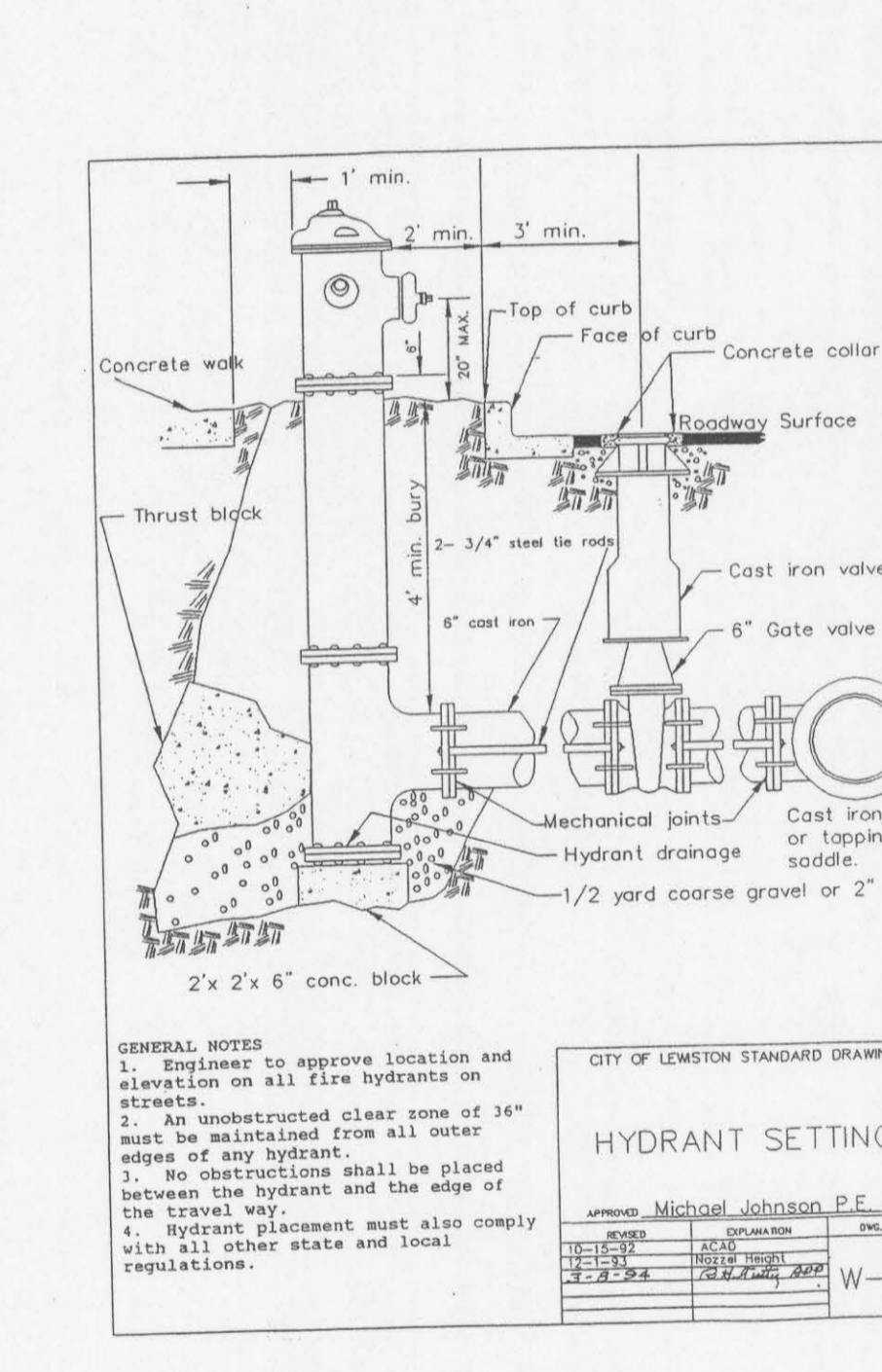
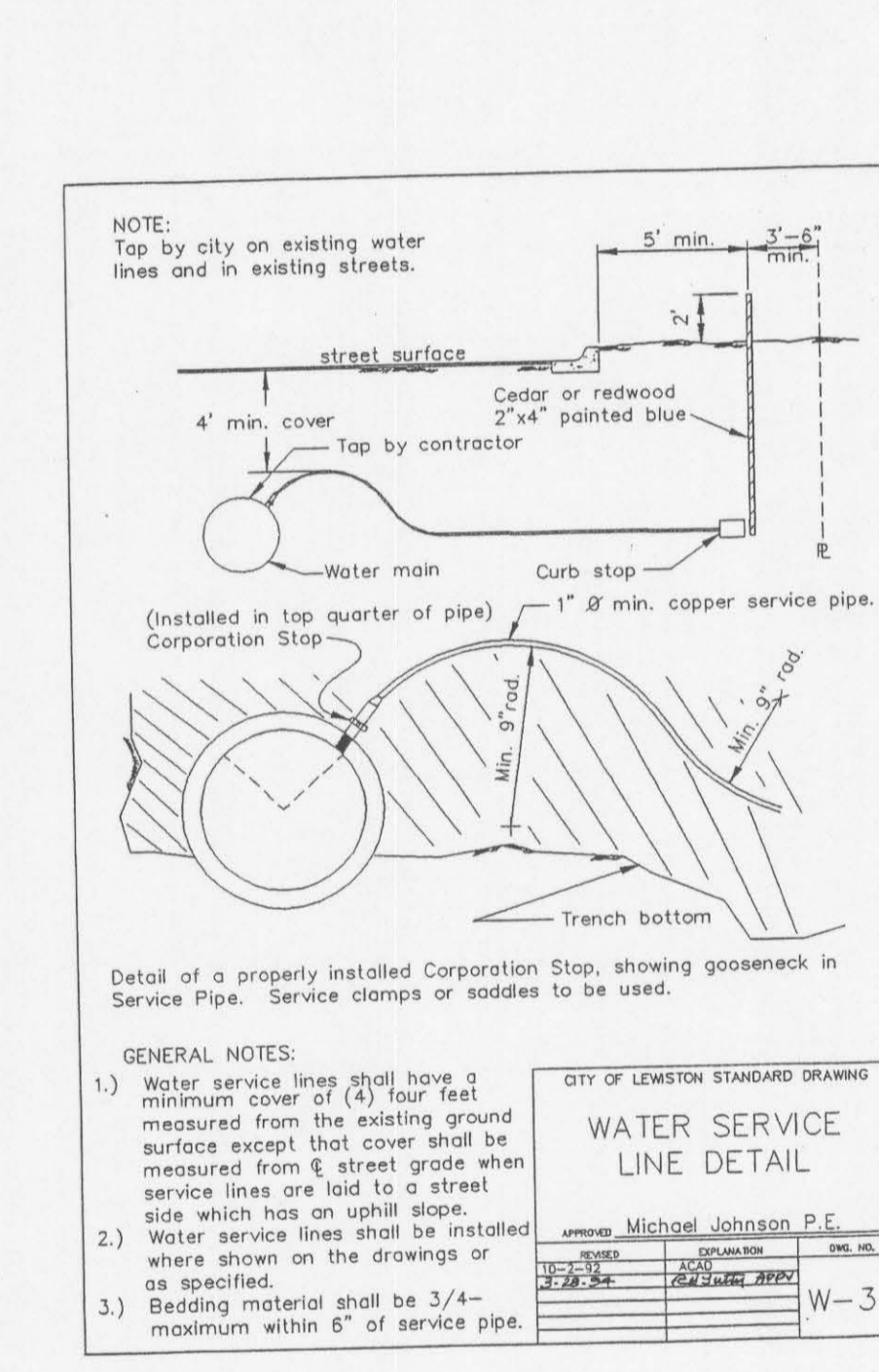


THRUST BLOCKING DETAIL

THRUST BLOCKING DETAIL

1. Thrust blocking shall be installed on all pipe segments to be installed in trench. Thrust blocking shall be installed on all pipe segments to be installed in trench.

| Volume of Thrust Block in cu. ft. | 10\"/> | | | |
|-----------------------------------|--------|------|------|------|
| 1 | 1.0 | 1.4 | 2.0 | 3.0 |
| 2 | 2.1 | 3.0 | 4.4 | 6.6 |
| 3 | 3.2 | 4.4 | 6.6 | 9.9 |
| 4 | 4.4 | 6.6 | 9.9 | 13.2 |
| 5 | 5.5 | 7.8 | 11.1 | 16.5 |
| 6 | 6.6 | 9.9 | 13.2 | 19.8 |
| 7 | 7.8 | 11.1 | 15.4 | 23.1 |
| 8 | 8.9 | 12.5 | 17.6 | 26.4 |
| 9 | 10.0 | 14.8 | 19.8 | 29.7 |
| 10 | 11.1 | 16.5 | 22.0 | 33.0 |
| 11 | 12.5 | 18.3 | 24.2 | 36.3 |
| 12 | 13.8 | 20.0 | 26.4 | 39.6 |
| 13 | 15.0 | 21.8 | 28.6 | 42.9 |
| 14 | 16.5 | 23.6 | 30.8 | 46.2 |
| 15 | 17.6 | 25.4 | 33.0 | 49.5 |
| 16 | 18.8 | 27.2 | 35.2 | 52.8 |
| 17 | 20.0 | 29.0 | 37.4 | 56.1 |
| 18 | 21.1 | 30.8 | 39.6 | 59.4 |
| 19 | 22.5 | 32.6 | 41.8 | 62.7 |
| 20 | 23.6 | 34.4 | 44.0 | 66.0 |



REVISIONS

| NO. | DATE | BY | FILE NAME |
|-----|------|----|-----------|
| | | | |
| | | | |
| | | | |
| | | | |

ORIGINAL DRAWING

**4025 EAGLE COURT
LEWISTON, IDAHO 83501
PHONE (208) 841-8035
FAX (208) 841-8035**

**CHARLES R. FISKE
REGISTERED PROFESSIONAL ENGINEER
NO. 10296**

**NAACLINE
ENGINEERING & DRAFTING
"an affordable alternative"**

**HILLCREST AIRCRAFT
HANGER PROJECT 2007
CITY DETAILS**

DRAWN BY: CRF CHECKED BY: CRF

DESIGNED BY: CRF

SCALE: N.T.S.

DATE: 2/5/07

PROJECT NO.: 00071

SHEET C11 OF 11