

- NOTES**
1. Water Main Piping, Fire Hydrants and Valves shall be furnished and installed in accordance with City of Lewiston standards.
 2. Sanitary Sewer Piping and Manholes shall be furnished and installed in accordance with City of Lewiston standards.
 3. All Avista conduits will be schedule 40 gray electrical conduit. Large radius sweep, long couplers.
 4. 36" cover on all gas pipe and electrical conduit.
 5. Gas pipe to be sand padded 6" above and below.

AS CONSTRUCTED 1/23/14 JSH
Hedco, Inc.
 529 Brylen Ave
 Lewiston, ID 83501

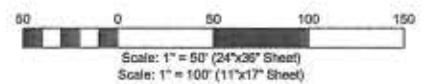
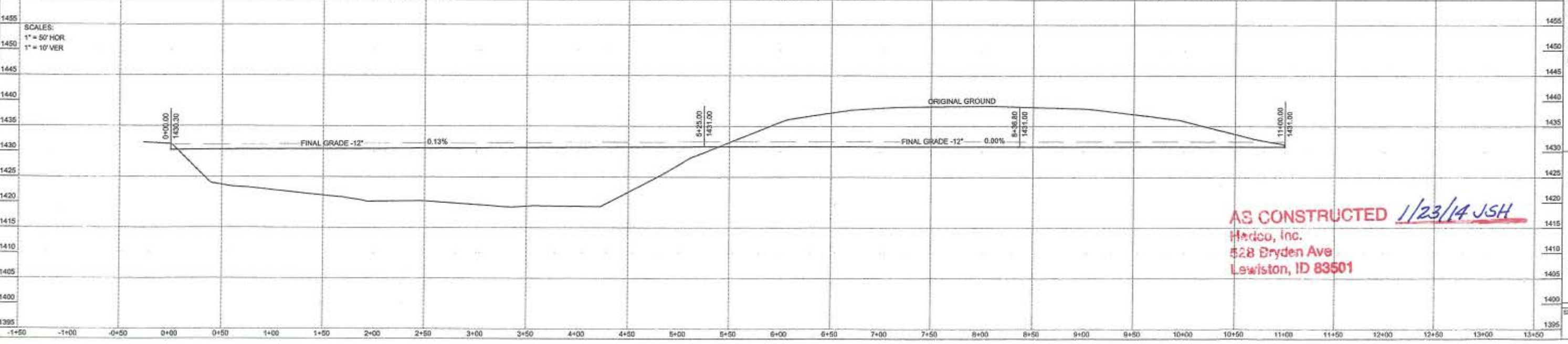
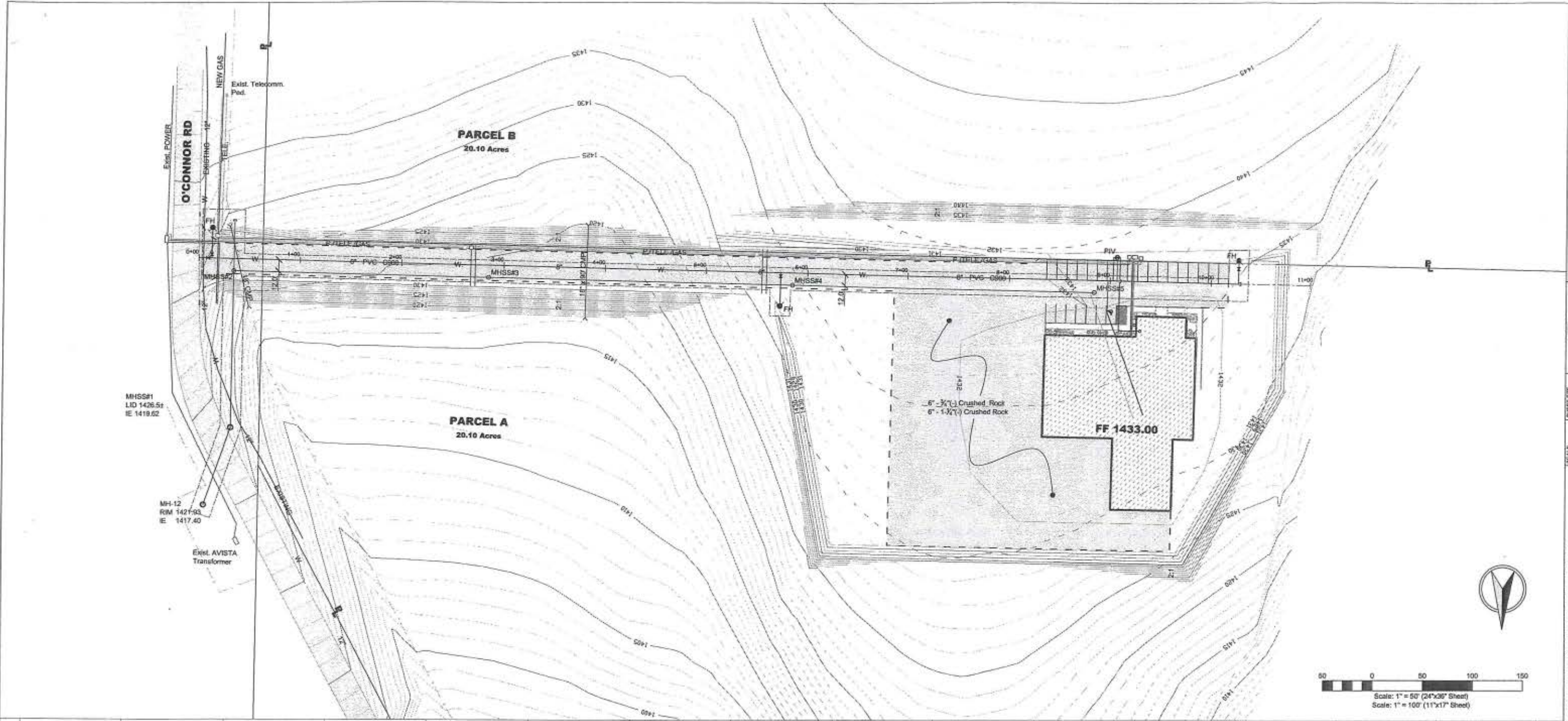
SEEKINS PRECISION, LLC
SITE PLAN
159 AMERICAN WAY
LEWISTON, IDAHO

NO.	DATE	REVISION DESCRIPTION	CHECKED	APP.
A	8-30-13	Revised Final L&P		
B	8-30-13	Utility Review & Weather routing		
C	8-28-13	Utility & Stormwater Overlap Update		
D	8-28-13	Utility & Stormwater Overlap Update		
E	10-16-13	CATV Update		
F	01-20-14	As-Built Data		

SCALE: 1"=40'
 DRAWN BY: MEE
 DATE: 08-14-13
 SHEET: 1
 DRAWING: 1330-1

HEDCO
 HAMMOND ENGINEERING & DEVELOPMENT CO.
 528 BRYDEN AVENUE LEWISTON, IDAHO 83501
 (208) 736-9422

SHEET **1**



DATE	REVISION DESCRIPTION	CHECKED	APPROVED
8-28-13	Added Bag & Road Sign, Revised Plat Blk.	JSH	JSH
8-21-13	Added Gas, Crushed Rock, Curbing, CMP	JSH	JSH
8-22-13	Added Utilities, Manholes, Clarification	JSH	JSH
8-24-13	Utility & Stormwater Drainage Update	JSH	JSH
01-23-14	Per AEC-28 Review		

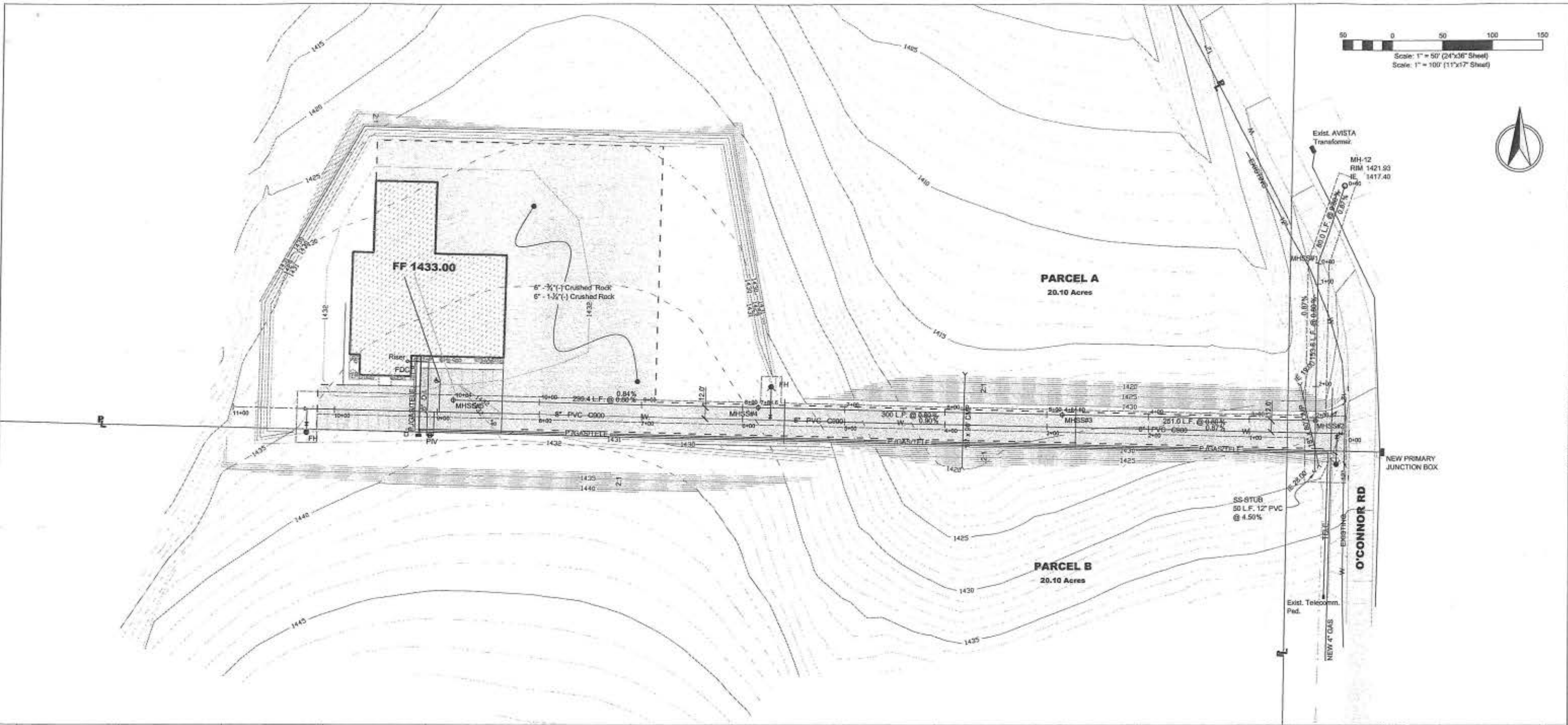
SCALE	1"=50'	CHECKED BY	JSH
DRAWN BY	MEE	DATE	8-19-13
SHEET	2	DRAWING NO.	1330-2

SEEKINS PRECISION, LLC
ACCESS ROAD
159 AMERICAN WAY
LEWISTON, IDAHO

HEDCO
 HAMMOND ENGINEERING & DEVELOPMENT CO.
 528 BRYDEN AVENUE LEWISTON, IDAHO 83501
 (208) 793-0422



AS CONSTRUCTED 1/23/14 JSH
 HEDCO, Inc.
 528 Bryden Ave
 Lewiston, ID 83501



REV	DATE	DESCRIPTION
A	8-15-13	Final Plan and P&I location: moved west on 159 American Way
B	8-23-13	Utility & Stormwater Overlay Updates
C	1-17-14	AS-BUILT SUBMITTALS



SHEET SIZE	D
SCALE	1"=50'
DRAWN BY	MEE
CHECKED BY	JSH
DATE	8-28-13
SHEET	3
DRAWING #	1330-3

SEEKINS PRECISION, LLC
SANITARY SEWER PLAN & PROFILE
159 AMERICAN WAY
LEWISTON, IDAHO

HEDCO
HAMMOND ENGINEERING & DEVELOPMENT CO.
508 BRYDEN AVENUE, LEWISTON, IDAHO 83501
(208) 738-2422

AS CONSTRUCTED 1/23/14 JSH

Hedco, Inc.
529 Bryden Ave
Lewiston, ID 83501

