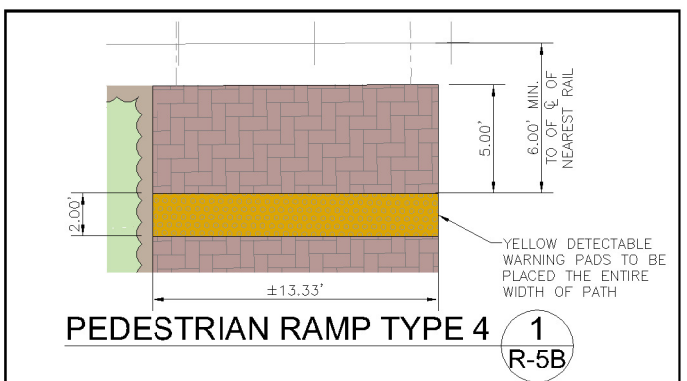
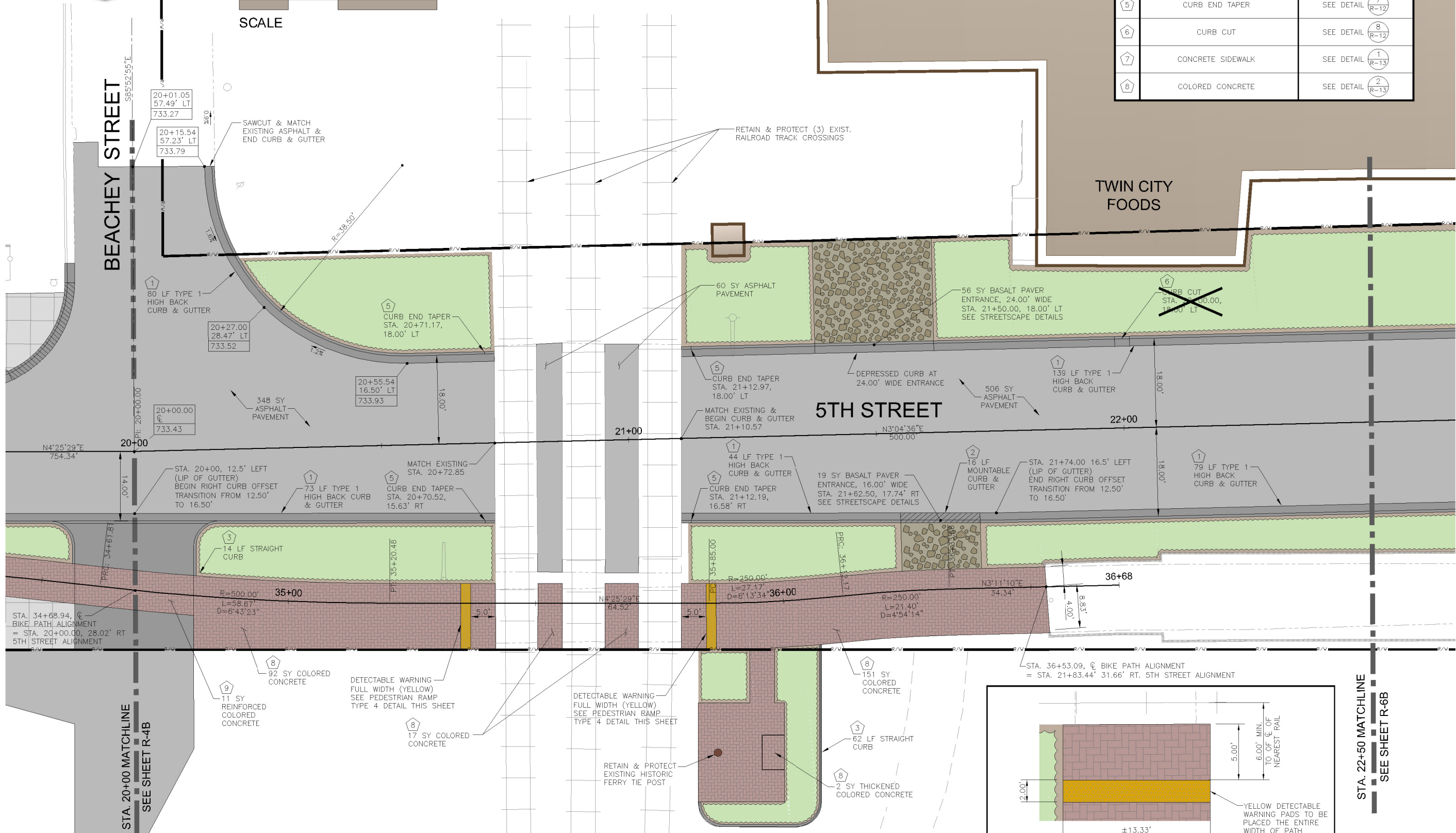


DETAIL SCHEDULE		
#	ITEM	DETAIL LOCATION
1	TYPE 1 HIGH BACK CURB & GUTTER	SEE DETAIL (R-12) 2
2	MOUNTABLE CURB & GUTTER	SEE DETAIL (R-12) 3
3	STRAIGHT CURB	SEE DETAIL (R-12) 4
5	CURB END TAPER	SEE DETAIL (R-12) 7
6	CURB CUT	SEE DETAIL (R-12) 8
7	CONCRETE SIDEWALK	SEE DETAIL (R-13) 1
8	COLORED CONCRETE	SEE DETAIL (R-13) 2

NOTES:
 1) ITEMS SCHEDULED FOR DEMOLITION ARE NOT SHOWN ON THIS SHEET. REFER TO PREVIOUS SHEET FOR DEMOLITION WORK.
 2) REFER TO THE FOLLOWING SHEET FOR EXISTING & PROPOSED UNDERGROUND UTILITIES.
 3) SPOT ELEVATIONS & STATION/OFFSET SHOWN AT PROPOSED CURB & GUTTER LOCATIONS ARE TO LIP OF GUTTER UNLESS OTHERWISE NOTED.



REVISIONS		
BY/HRC	DATE	DESCR
	12/11/12	Relse grade 6" & remove curb cuts

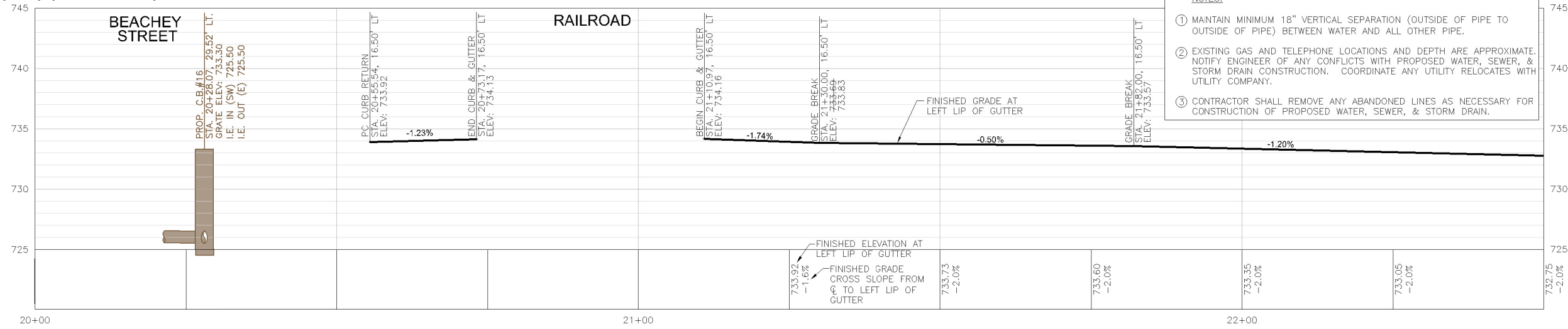


DRAWN BY:	CCK
DESIGNED BY:	DLW
QUALITY CHECK:	CKW
DATE:	04-06-12
JOB NO.:	L11-016
FIELDBOOK:	N/A

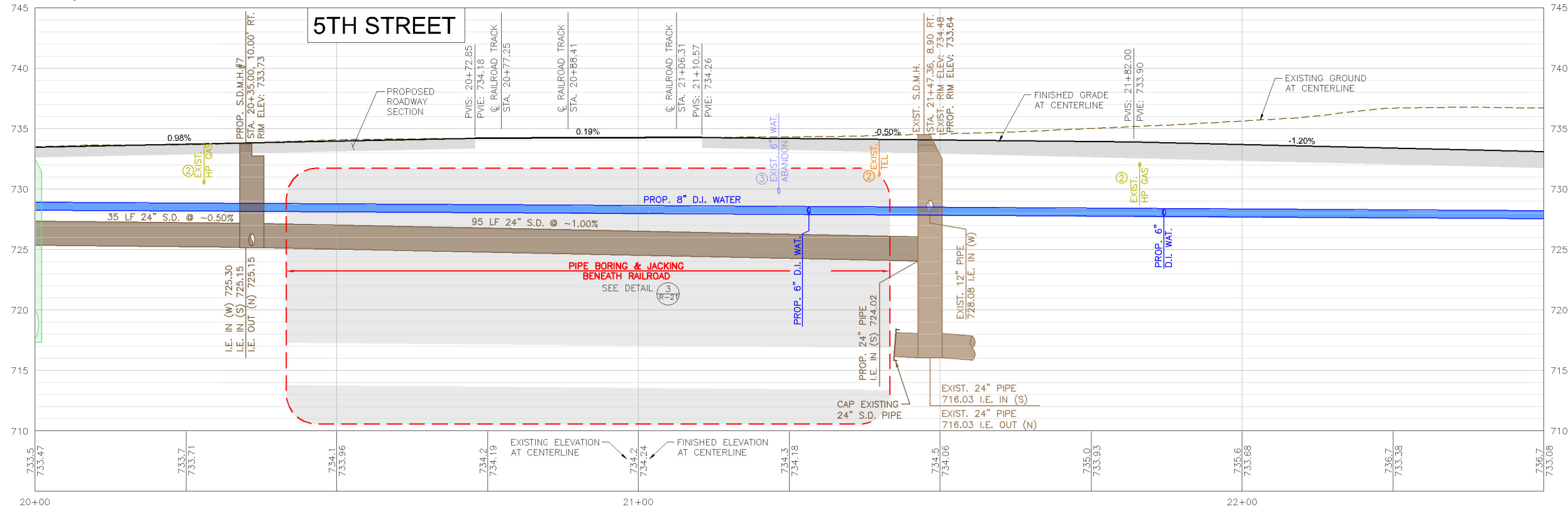
DOWNTOWN LEWISTON STREETSCAPE (5TH STREET)
 LEWISTON, IDAHO
 ROADWAY PLAN
 SHEET R-5B

CONTRACT PLANS

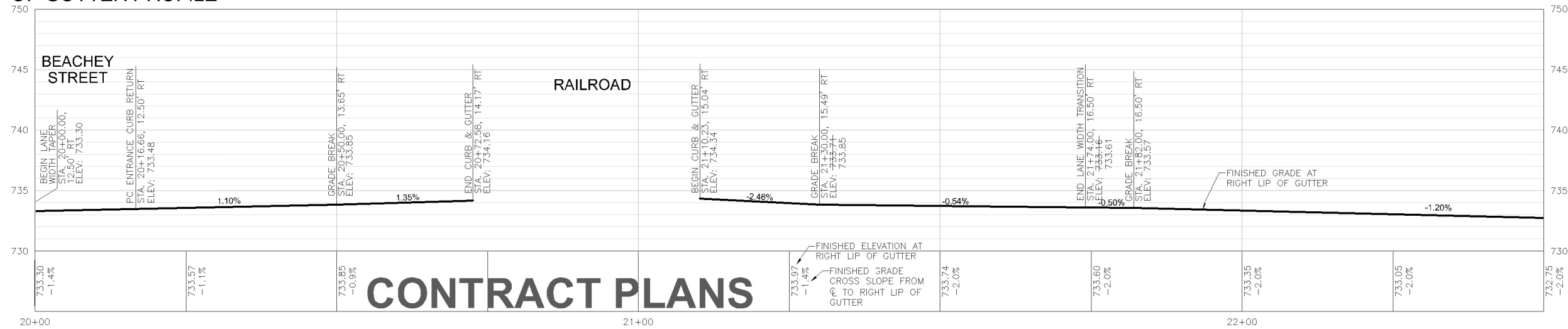
LEFT LIP OF GUTTER PROFILE



CENTERLINE PROFILE



RIGHT LIP OF GUTTER PROFILE



CONTRACT PLANS



REVISIONS

BY HRC	DATE	DESCR
	12/11/12	raise grade 6" and remove curb cuts



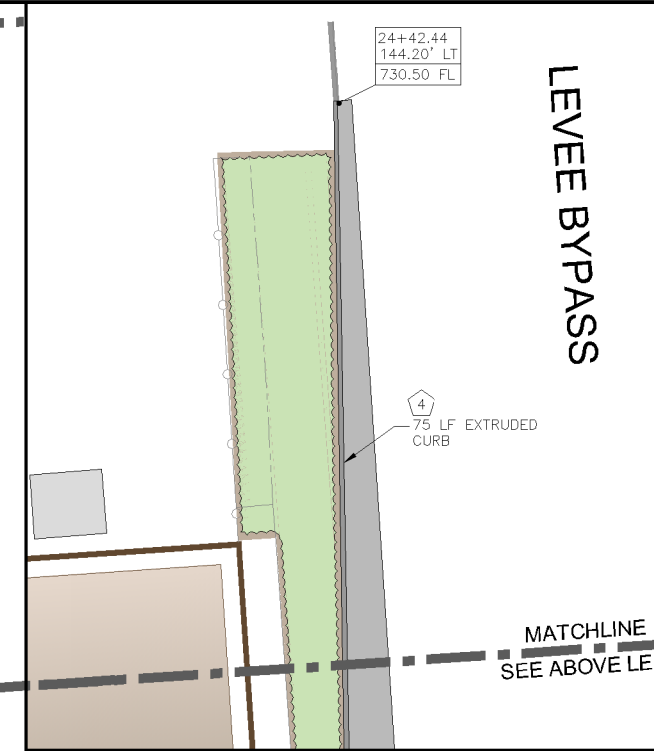
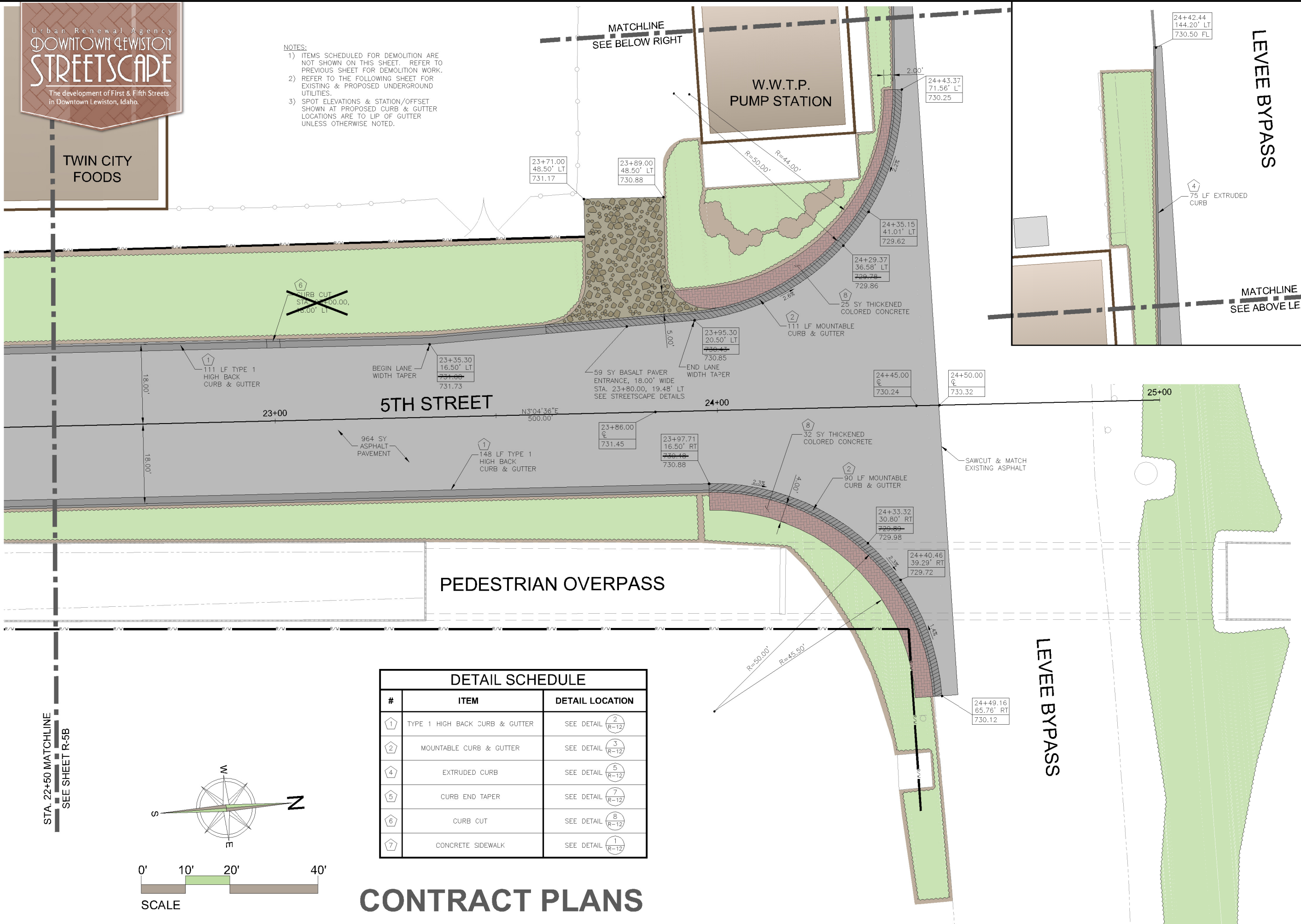
DRAWN BY: CCK
DESIGNED BY: DLW
QUALITY CHECK: CKW
DATE: 04-06-12
JOB NO.: L11-016
FIELDBOOK: N/A

DOWNTOWN LEWISTON STREETSCAPE (5TH STREET)
LEWISTON, IDAHO

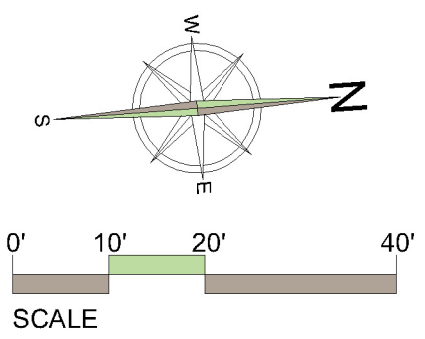
ROADWAY PROFILES

TWIN CITY
 FOODS

- NOTES:
- 1) ITEMS SCHEDULED FOR DEMOLITION ARE NOT SHOWN ON THIS SHEET. REFER TO PREVIOUS SHEET FOR DEMOLITION WORK.
 - 2) REFER TO THE FOLLOWING SHEET FOR EXISTING & PROPOSED UNDERGROUND UTILITIES.
 - 3) SPOT ELEVATIONS & STATION/OFFSET SHOWN AT PROPOSED CURB & GUTTER LOCATIONS ARE TO LIP OF GUTTER UNLESS OTHERWISE NOTED.



DETAIL SCHEDULE		
#	ITEM	DETAIL LOCATION
1	TYPE 1 HIGH BACK CURB & GUTTER	SEE DETAIL (2) (R-12)
2	MOUNTABLE CURB & GUTTER	SEE DETAIL (3) (R-12)
4	EXTRUDED CURB	SEE DETAIL (5) (R-12)
5	CURB END TAPER	SEE DETAIL (7) (R-12)
6	CURB CUT	SEE DETAIL (8) (R-12)
7	CONCRETE SIDEWALK	SEE DETAIL (1) (R-12)



CONTRACT PLANS



REVISIONS		
BY/HRC	DATE	DESCR
	12/11/12	Relise grade 6" and remove curb cuts

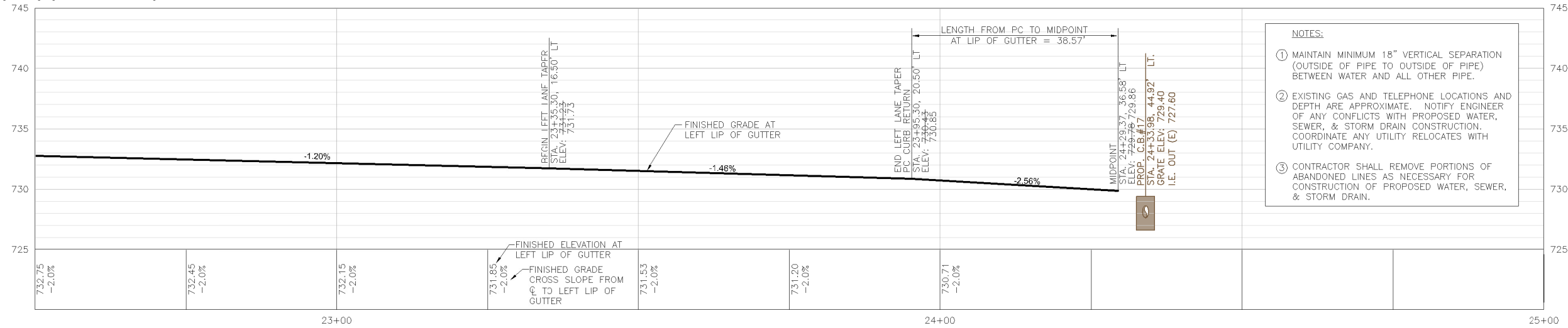
td&h
 Engineering
 1480 N. FALLS BOZEMAN/KALISPELL
 SPOKANE WASHINGTON
 LEWISTON IDAHO

DRAWN BY:	CCK
DESIGNED BY:	DLW
QUALITY CHECK:	CKW
DATE:	04-06-12
JOB NO.:	L11-016
FIELDBOOK:	N/A

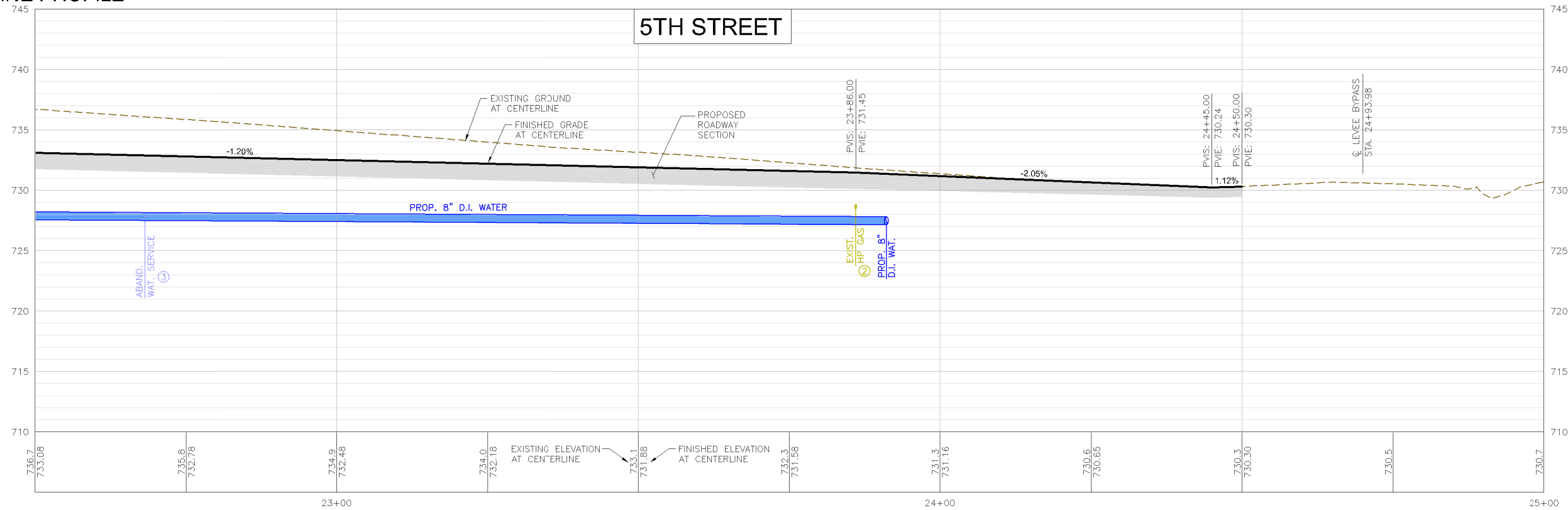
DOWNTOWN LEWISTON STREETSCAPE (5TH STREET)
 LEWISTON, IDAHO

ROADWAY PLAN

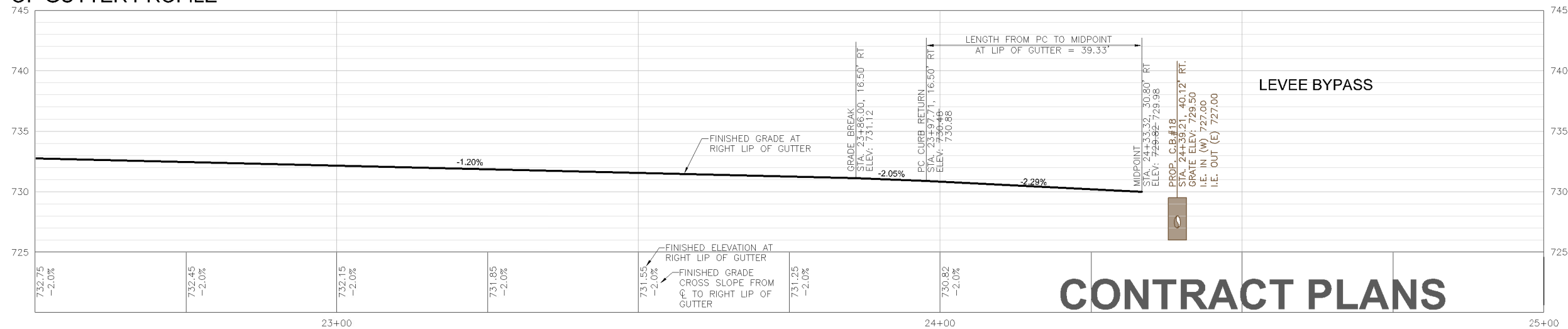
LEFT LIP OF GUTTER PROFILE



CENTERLINE PROFILE



RIGHT LIP OF GUTTER PROFILE



CONTRACT PLANS



REVISIONS

BY HRC	DATE	DESCR
	12/11/12	Raise grade 6" & remove curb cuts

TD&H Engineering
 T. D. & H. Engineering, Inc.
 1000 N. 10th Street
 Spokane, WA 99207
 (509) 325-1111
 www.tdandh.com

DRAWN BY: CCK
 DESIGNED BY: DLW
 QUALITY CHECK: CKW
 DATE: 04-06-12
 JOB NO: L11-016
 FIELDBOOK: N/A

DOWNTOWN LEWISTON STREETScape (5TH STREET)
 LEWISTON, IDAHO

ROADWAY PROFILES

R-6D.DWG
 SHEET **R-6D**