

DEMOLITION / REMOVAL LEGEND:

- (A) ADJUST STRUCTURE TO NEW FINISH GRADE, AS REQUIRED.
- (P) CONTRACTOR SHALL PROTECT AND MAINTAIN IN PLACE.
- (H) CONTRACTOR SHALL REMOVE AND DISPOSE OF LEGALLY OFF-SITE.
- (R) CONTRACTOR SHALL REMOVE AND REPLACE AS SPECIFIED ON HORIZONTAL CONTROL.
- (AS) ASPHALT TO BE REMOVED.

UTILITY STATEMENT:

THE UNDERGROUND UTILITIES SHOWN HAVE BEEN LOCATED FROM FIELD SURVEY INFORMATION AND EXISTING DRAWINGS. THE SURVEYOR MAKES NO WARRANTY AS TO THE ACCURACY OF SUCH UTILITIES IN THE AREA, EITHER IN SERVICE OR ABANDONED. THE SURVEYOR FURTHER DOES NOT WARRANT THAT THE UNDERGROUND UTILITIES SHOWN CERTAINLY EXACTLY LOCATED AS ACCURATELY AS POSSIBLE FROM INFORMATION AVAILABLE. THE SURVEYOR HAS NOT PHYSICALLY LOCATED THE UNDERGROUND UTILITIES.

RAYMOND FOX & ASSOCIATES
 MEDICAL ARCHITECTURE & CONSULTING
 1660 HOTEL CIRCLE NORTH • STE 200 • SAN DIEGO • CA 92108
 (619) 296-4599 RAYMONDFOX.COM

Lewis & Clark
 ORTHOPAEDIC INSTITUTE
 LEWISTON ORTHOPAEDIC ASSOCIATES • LEWIS & CLARK OUTPATIENT CENTER

Architectural and Planning
RGU architecture
 313 D Street Means Building Suite 200 Lewiston ID 83501 P 208 743 1662

PROJECT NAME: LEWISTON ORTHOPAEDIC ASSOCIATES, PA
 Lewis & Clark Orthopaedic Institute, LLC
 320 Warner Drive
 Lewiston, ID 83501

PROJECT NUMBER: 15.018

SHEET TITLE: SITE EXISTING / DEMOLITION

REVISIONS:

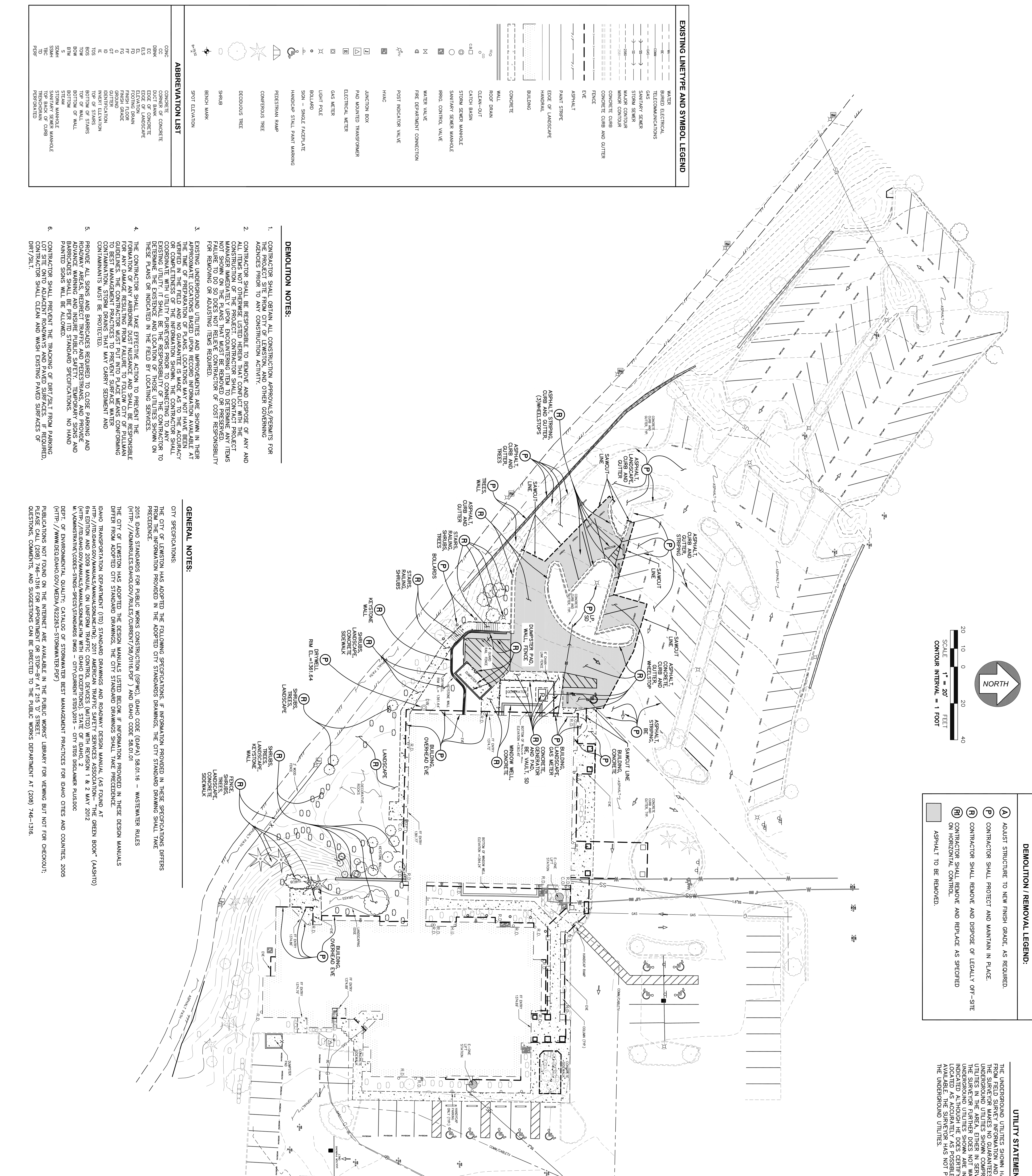
PROFESSIONAL STAMPS:

DRAWN BY: DJJ

DATE ISSUED: MARCH 13, 2017

SHEET NUMBER: C-01

Parametrix
 ENGINEERING PLANNING ENVIRONMENTAL SCIENCES
 2455 KAMAN ST. | PULLMAN, WA 99130
 WWW.PARAMETRIX.COM



- DEMOLITION NOTES:**
- CONTRACTOR SHALL OBTAIN ALL CONSTRUCTION APPROVALS/PERMITS FOR THE PROJECT SITE FROM CITY OF LEWISTON, AND OTHER GOVERNING AGENCIES PRIOR TO ANY CONSTRUCTION ACTIVITY.
 - CONTRACTOR SHALL BE RESPONSIBLE TO REMOVE AND DISPOSE OF ANY AND ALL ITEMS NOT OTHERWISE LISTED HEREIN THAT CONFLICT WITH THE DEMOLITION PLAN. THE CONTRACTOR SHALL BE RESPONSIBLE TO NOTIFY THE PROJECT MANAGER IMMEDIATELY UPON ENCOUNTERING ITEM TO DETERMINE ANY ITEMS FAILURE TO DO SO DOES NOT RELIEVE CONTRACTOR OF COST RESPONSIBILITY FOR REMOVAL OR DISPOSING ITEMS REQUIRED.
 - EXISTING UNDERGROUND UTILITIES AND IMPROVEMENTS ARE SHOWN IN THEIR ORIGINAL PLANS. CONTRACTOR SHALL VERIFY THE LOCATION AND DEPTH OF ALL UTILITIES AND IMPROVEMENTS IN THE FIELD AND NO GUARANTEE IS MADE AS TO THE ACCURACY OR COMPLETENESS OF THE INFORMATION SHOWN. THE CONTRACTOR SHALL DETERMINE THE EXISTENCE AND LOCATION OF THOSE UTILITIES SHOWN ON THESE PLANS OR INDICATED IN THE FIELD BY LOCATING SERVICES.
 - THE CONTRACTOR SHALL TAKE EFFECTIVE ACTION TO PREVENT THE FORMATION OF ANY AIRBORNE DUST NUISANCE AND SHALL BE RESPONSIBLE FOR ANY DAMAGE RESULTING FROM FAILURE TO FOLLOW CITY OF PULLMAN BEST MANAGEMENT PRACTICES TO PREVENT SURFACE WATER CONTAMINATION. STORM DRAINS THAT MAY CARRY SEDIMENT AND CONTAMINANTS MUST BE PROTECTED.
 - PROVIDE ALL SIGNS AND BARRICADES REQUIRED TO CLOSE PARKING AND ROADWAY AREAS, REDIRECT TRAFFIC, AND PEDESTRIANS, AND PROVIDE BARRICADES SHALL BE SET TO STANDARD SPECIFICATIONS. NO HAND PAINTED SIGNS WILL BE ALLOWED.
 - CONTRACTOR SHALL PREVENT THE TRACKING OF DIRT/SILT FROM PARKING LOT SITE ONTO ADJACENT ROADWAYS AND PAVED SURFACES. IF REQUIRED, CONTRACTOR SHALL CLEAN AND WASH EXISTING PAVED SURFACES OF DIRT/SILT.

ABBREVIATION LIST

CONC	CONCRETE
CC	CORNER OF CONCRETE
DBNK	DUCT BANK
EL	ELEVATION
EL	EDGE OF CONCRETE
EL	ELEVATION
FF	FINISH FLOOR
FG	FINISH GRADE
OT	OUTLET
D	IDENTIFICATION
TOP OF STAIRS	TOP OF STAIRS
BTM	BOTTOM OF STAIRS
BM	BOTTOM OF WALL
BTM	BOTTOM OF WALL
BTM	BOTTOM OF WALL
S	STAIR MARKING
SOAH	TOP BACK OF CURB
TBC	TOP BACK OF CURB
TR	TRAIL MARKING
FB	FINISH

EXISTING LINETYPE AND SYMBOL LEGEND

---	WATER
---	BURIED ELECTRICAL
---	TELECOMMUNICATIONS
---	GAS
---	STORM SEWER
---	MAJOR CONTIGUR
---	MINOR CONTIGUR
---	CONCRETE CURB AND GUTTER
---	FENCE
---	ASPHALT
---	PAINT STRIPE
---	EDGE OF LANDSCAPE
---	HANDRAIL
---	BUILDING
---	CONCRETE
---	WALL
---	ROOF DRAIN
---	CLEAN-OUT
---	CATCH BASIN
---	STORM SEWER MANHOLE
---	SANITARY SEWER MANHOLE
---	IRRG. CONTROL VALVE
---	WATER VALVE
---	PIRE DEPARTMENT CONNECTION
---	POST INDICATOR VALVE
---	H/M/C
---	JUNCTION BOX
---	PAD MOUNTED TRANSFORMER
---	ELECTRICAL METER
---	GAS METER
---	LIGHT POLE
---	BOLLARD
---	SIGN - SINGLE FACER/PLATE
---	HANDICAP STALL PAINT MARKING
---	PEDESTRIAN RAMP
---	CONIFEROUS TREE
---	DECIDUOUS TREE
---	SHRUB
---	BENCH MARK
---	SPOT ELEVATION

GENERAL NOTES:

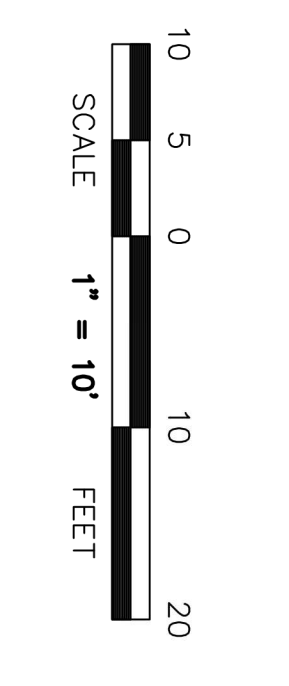
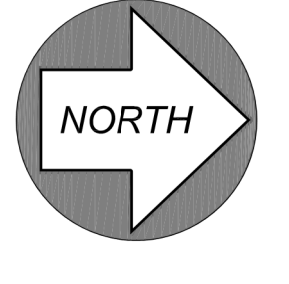
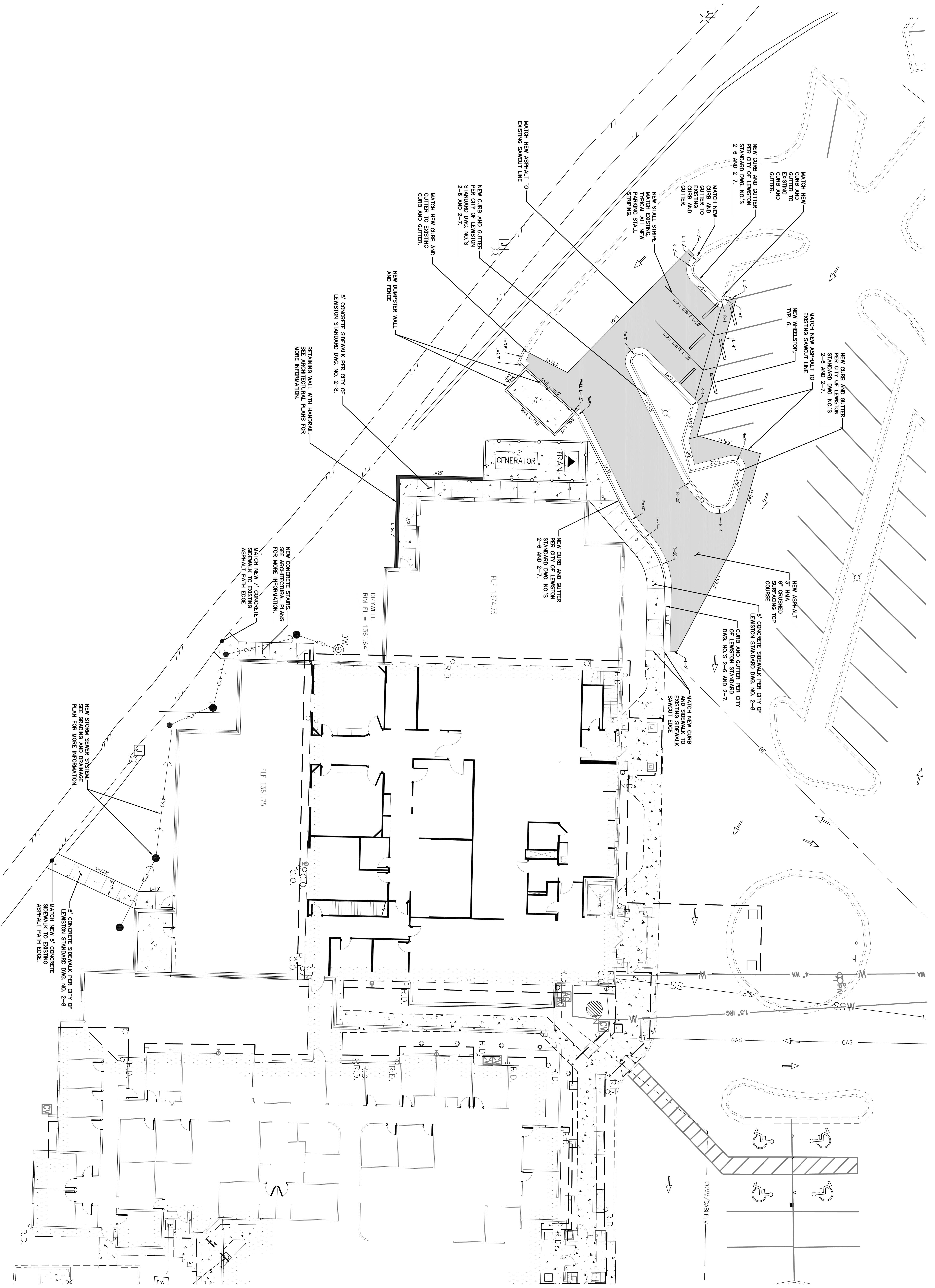
CITY SPECIFICATIONS:
 THE CITY OF LEWISTON HAS ADOPTED THE FOLLOWING SPECIFICATIONS. IF INFORMATION PROVIDED IN THESE SPECIFICATIONS DIFFERS FROM THE INFORMATION PROVIDED IN THE ADOPTED CITY STANDARDS DRAWINGS, THE CITY STANDARD DRAWING SHALL TAKE PRECEDENCE.

2015 IDAHO STANDARDS FOR PUBLIC WORKS CONSTRUCTION (SPWC), IDAHO CODE (DAPA) 58.01.16 - WASTEWATER RULES
 (HTTP://ADMINRULES.IDAHO.GOV/RULES/CURRENT/58.0116.PDF) AND IDAHO CODE 58.01.01

IDAHO TRANSPORTATION DEPARTMENT (TID) STANDARD DRAWINGS AND ROADWAY DESIGN MANUAL. (AS FOUND AT HTTP://TID.IDAHO.GOV/MANUALS/MANUALSINDEX.PDF); 2011 AMERICAN TRAFFIC SAFETY SERVICES ASSOCIATION- "THE GREEN BOOK" (ASHSTO) 6TH EDITION AND 2009 MANUAL ON UNIFORM TRAFFIC CONTROL DEVICES (MUTCD) WITH REVISION 1 & 2 MAY 2012
 (HTTP://TRID.IDAHO.GOV/MANUALS/MANUALSINDEX.PDF WITH IDAHO EXCEPTIONS); STATE OF IDAHO, 2 M. WADSWORTH INC. (CODES-STDS-SPETS-STANDARD DWS - CITY GOVERN 503.5015 - CITY 5035 DISCLAIMER PUS300C DEPT. OF ENVIRONMENTAL QUALITY: CATALOG OF STORMWATER BEST MANAGEMENT PRACTICES FOR IDAHO CITIES AND COUNTIES, 2005 (HTTP://WWW.DQD.IDAHO.GOV/MEDIA/822283--STORMWATER.PDF)

PUBLICATIONS NOT FOUND ON THE INTERNET ARE AVAILABLE IN THE PUBLIC WORKS' LIBRARY FOR VIEWING BUT NOT FOR CHECKOUT. PLEASE CALL (208) 746-1316 FOR APPOINTMENT OR STOP-BY AT 215 'D' STREET.

QUESTIONS, COMMENTS, AND SUGGESTIONS CAN BE DIRECTED TO THE PUBLIC WORKS DEPARTMENT AT (208) 746-1316.



Parametrix
 ENGINEERING PLANNING ENVIRONMENTAL SCIENCES
 2455 MAIN ST. | PULLMAN, WA 99133
 WWW.PARAMETRIX.COM

SHEET NUMBER: C-02	DATE ISSUED: MARCH 13, 2017	PROFESSIONAL STAMPS:
DRAWN BY: DJJ	REVISIONS:	
	▲	
	▲	
	▲	
	▲	

PROJECT NAME:
 LEWISTON ORTHOPAEDIC ASSOCIATES, PA
 Lewis & Clark Orthopaedic Institute, LLC
 320 Warner Drive
 Lewiston, ID 83501

PROJECT NUMBER: 15.018
SHEET TITLE: HORIZONTAL SITE PLAN

RGU architecture

Architectural and Planning
 313 D Street ••
 Means Building
 Suite 200 •••
 Lewiston ID 83501
 P 208 • 743 • 1662

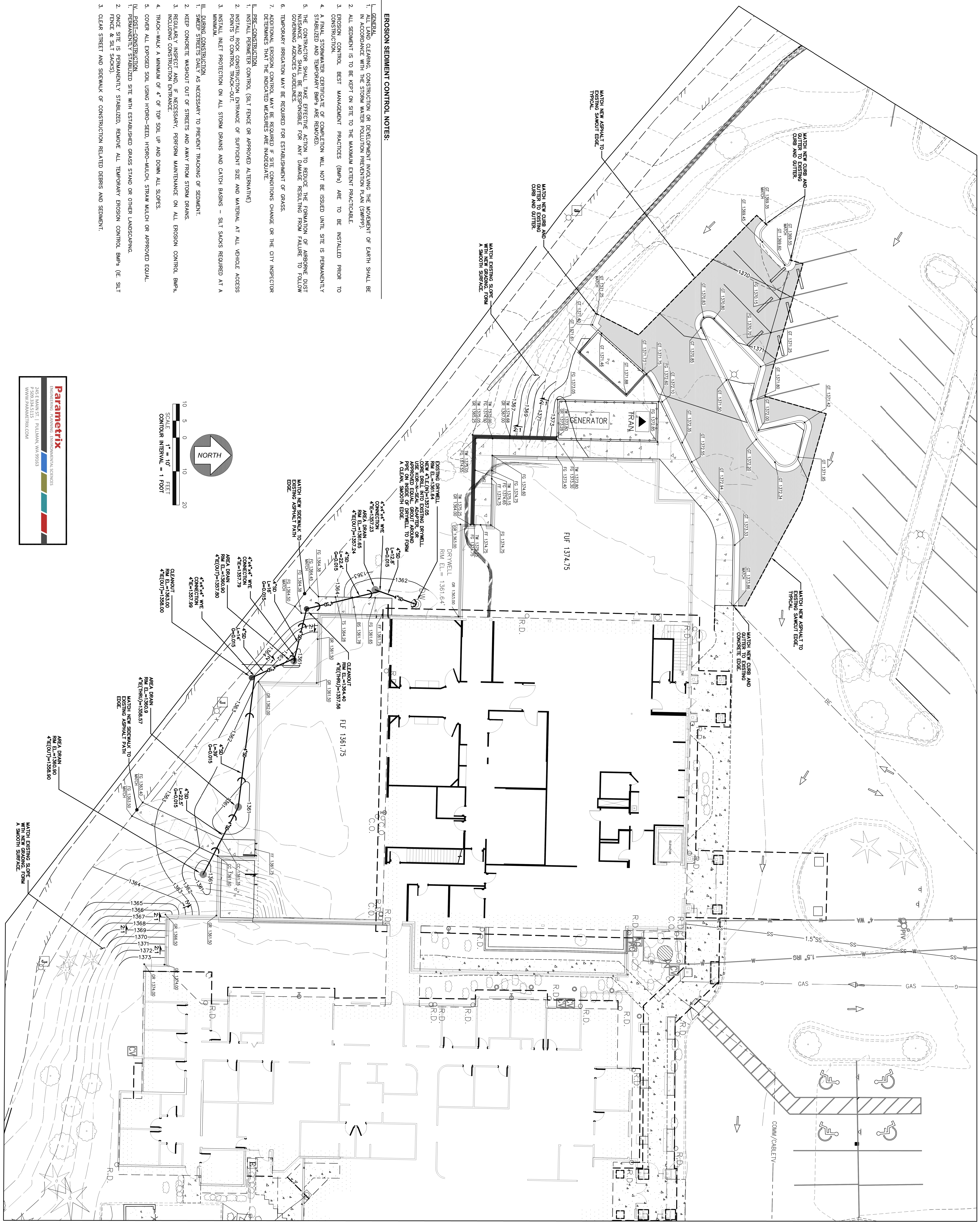
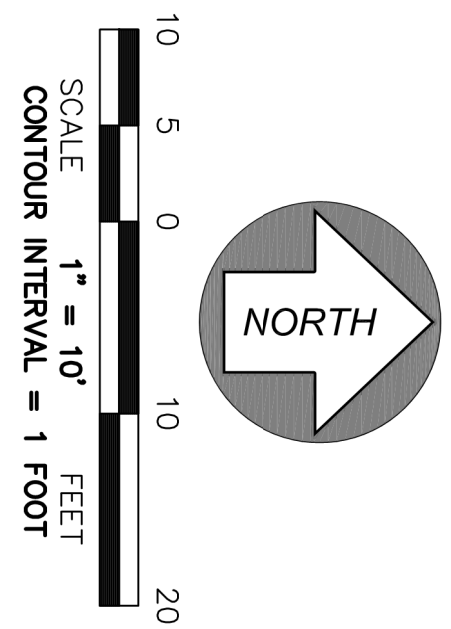
Lewis & Clark
 ORTHOPAEDIC INSTITUTE

LEWISTON ORTHOPAEDIC ASSOCIATES • LEWIS & CLARK ORTHOPAEDIC INSTITUTE

RAYMOND FOX & ASSOCIATES
 MEDICAL ARCHITECTURE & CONSULTING

1660 HOTEL CIRCLE NORTH • STE B40 • SAN DIEGO • CA 92108
 (619) 296-4599

- EROSION SEDIMENT CONTROL NOTES:**
- GENERAL:**
1. IN ACCORDANCE WITH THE STORM WATER POLLUTION PREVENTION PLAN (SWPPP), ALL SEDIMENT IS TO BE KEPT ON SITE TO THE MAXIMUM EXTENT PRACTICABLE.
 - EROSION CONTROL BEST MANAGEMENT PRACTICES (BMPs) ARE TO BE INSTALLED PRIOR TO CONSTRUCTION.
 - A FINAL STOPWATER CERTIFICATE OF COMPLETION WILL NOT BE ISSUED UNTIL SITE IS PERMANENTLY STABILIZED AND TEMPORARY BMPs ARE REMOVED.
 - THE CONTRACTOR SHALL TAKE EFFECTIVE ACTION TO REDUCE THE FORMATION OF AIRBORNE DUST MEASUREMENTS SHALL BE RESPONSIBLE FOR ANY DAMAGE RESULTING FROM FAILURE TO FOLLOW GOVERNING AGENCIES GUIDELINES.
 - TEMPORARY IRRIGATION MAY BE REQUIRED FOR ESTABLISHMENT OF GRASS.
 - ADDITIONAL EROSION CONTROL MAY BE REQUIRED IF SITE CONDITIONS CHANGE OR THE CITY INSPECTOR DETERMINES THAT THE INDICATED MEASURES ARE INADEQUATE.
- PRE-CONSTRUCTION**
1. INSTALL PERIMETER CONTROL (SILT FENCE OR APPROVED ALTERNATIVE)
 - INSTALL ROCK CONSTRUCTION ENTRANCE OF SUFFICIENT SIZE AND MATERIAL AT ALL VEHICLE ACCESS POINTS TO CONTROL TRACK-OUT
 - INSTALL INLET PROTECTION ON ALL STORM DRAINS AND CATCH BASINS - SILT SACKS REQUIRED AT A MINIMUM.
- DURING CONSTRUCTION**
1. SWEEP STREETS DAILY AS NECESSARY TO PREVENT TRACKING OF SEDIMENT.
2. KEEP CONCRETE WASHOUT OUT OF STREETS AND AWAY FROM STORM DRAINS.
3. REGULARLY INSPECT AND, IF NECESSARY, PERFORM MAINTENANCE ON ALL EROSION CONTROL BMPs, INCLUDING CONSTRUCTION ENTRANCE.
4. TRACK-WALK A MINIMUM OF 4" OF TOP SOIL UP AND DOWN ALL SLOPES.
5. COVER ALL EXPOSED SOIL USING HYDRO-SEED, HYDRO-MULCH, STRAW MULCH OR APPROVED EQUAL.
- POST-CONSTRUCTION**
1. PERMANENTLY STABILIZED SITE WITH ESTABLISHED GRASS STAND OR OTHER LANDSCAPING.
2. ONCE SITE IS PERMANENTLY STABILIZED, REMOVE ALL TEMPORARY EROSION CONTROL BMPs (E. SILT FENCE & SILT SACKS).
3. CLEAR STREET AND SIDEWALK OF CONSTRUCTION RELATED DEBRIS AND SEDIMENT.



SHEET NUMBER: C-03	REVISIONS: 	PROJECT NAME: LEWISTON ORTHOPAEDIC ASSOCIATES, PA Lewis & Clark Orthopaedic Institute, LLC 320 Warner Drive Lewiston, ID 83501		Architectural and Planning 313 D Street Means Building Suite 200 Lewiston ID 83501 P 208 743 1662			
	PROFESSIONAL STAMPS: 	PROJECT NUMBER: 15.018 SHEET TITLE: GRADING AND DRAINAGE					RAYMOND FOX & ASSOCIATES MEDICAL ARCHITECTURE & CONSULTING 1660 HOTEL CIRCLE NORTH • STE B40 • SAN DIEGO • CA 92108 (619) 296-4599
	DRAWN BY: DJJ DATE ISSUED: MARCH 13, 2017						