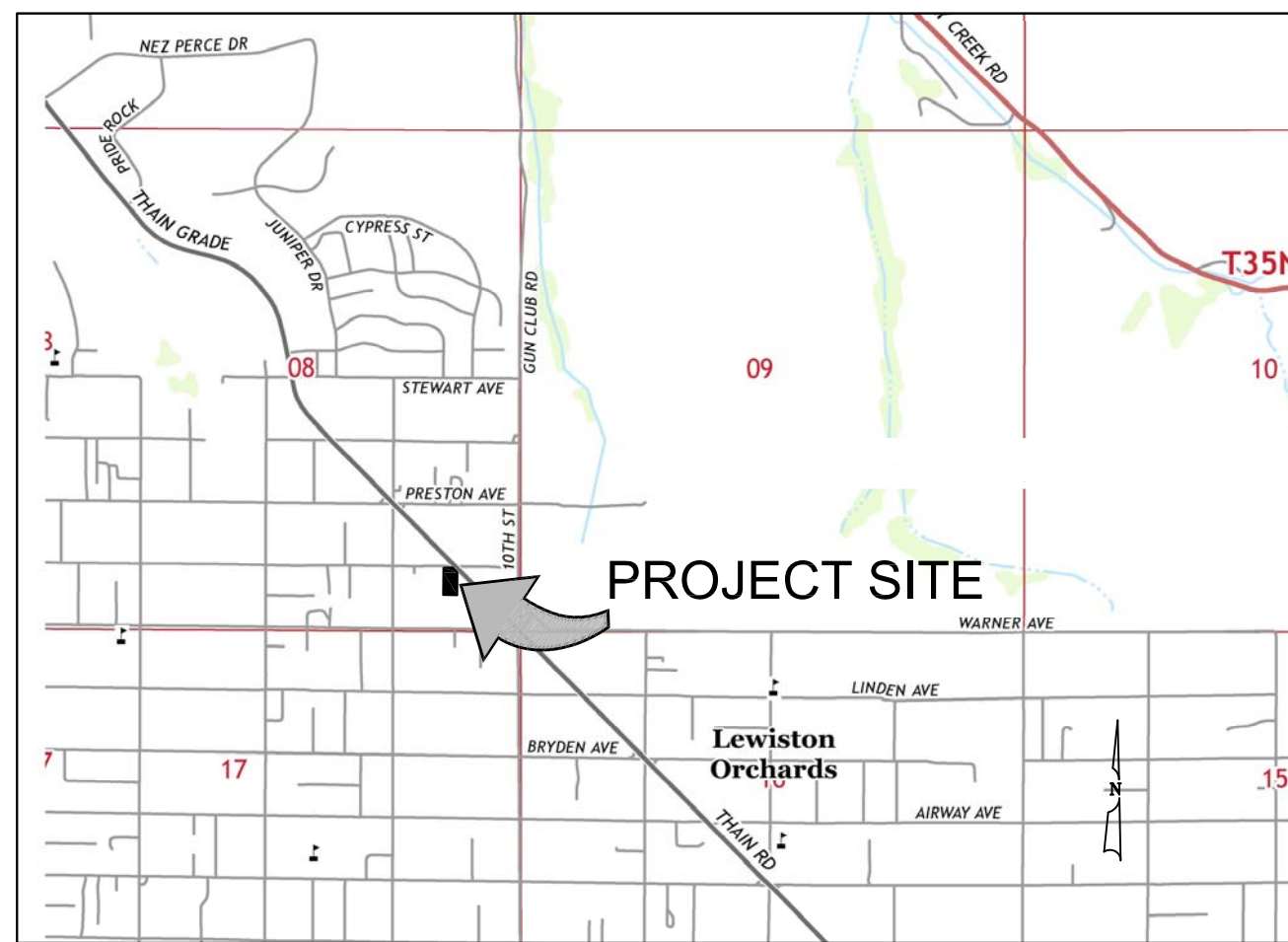


LOCOGRINZ - PARKING LOT & FRONTAGE IMPROVEMENTS

CIVIL CONSTRUCTION PLANS



CONTACTS

OWNER
Gayne Nitta

DEVELOPER
Kensaton Corporation

ARCHITECT
Contact Gayne Nitta

GEOTECHNICAL SERVICES
ALLWEST TESTING & ENGINEERING, LLC
2705 E. Main Street
Lewiston, Idaho

UTILITY PROVIDERS
SANITARY SEWER City of Lewiston 208-746-3671
WATER AVISTA (Colby Witters) 509-780-1475
POWER CENTURY LINK (Julio Mendez) 208-798-8380
TELECOM CABLEONE (Tom Donahue) 208-791-5032
CABLE T.V.



LEGEND

— San — San —	PROPOSED SAN. SEWER	— San — San —	EXISTING SAN. SEWER
— SD — SD —	PROPOSED STORM SEWER	— SD — SD —	EXISTING STORM SEWER
— W — W —	PROPOSED WATER LINE	— W — W —	EXISTING WATER LINE
— F — F —	PROPOSED FIRE PROTECTION	— F — F —	EXISTING FIRE PROTECTION
— X — X —	PROPOSED FENCE LINE	— OHE — OHE —	EXISTING OVERHEAD ELECTRICAL LINE
▩	PROPOSED CATCH BASIN	— UGE — UGE —	EXISTING UNDERGROUND ELECTRICAL LINE
⊙	PROPOSED MANHOLE	— X — X —	EXISTING FENCE LINE
⊕	PROPOSED WATER METER	▩	EXISTING CATCH BASIN
⊕	PROPOSED GATE VALVE	⊙	EXISTING MANHOLE
⊕	PROPOSED FIRE HYDRANT	⊗	EXISTING GATE VALVE
⊕	PROPOSED THRUST BLOCK	⊕	EXISTING FIRE HYDRANT
XXXX	PROPOSED CONTOUR LINE	⊕	EXISTING THRUST BLOCK
XXXX	PROPOSED SPOT ELEVATION	⊕	EXISTING WATER METER
— — — —	PROPOSED CENTERLINE MONUMENT	⊕	EXISTING POWER POLE
— — — —	PROPOSED CENTERLINE	— XXXX —	EXISTING CONTOUR LINE
— — — —	PROPOSED EASEMENT LINE	(E)XXXXXXXX	EXISTING SPOT ELEVATION
— — — —	PROPERTY LINE	⊕	EXISTING UTILITY
— — — —	PROJECT BOUNDARY	⊕	EXISTING PROPERTY LINE
⊕	SILT FENCE	⊕	EXISTING CENTERLINE MONUMENT
▩	PROPOSED A.C. PAVEMENT	▩	EXISTING A.C. PAVEMENT

CITY INSPECTION CHECKLIST

ITEM	MATERIAL	TEST STANDARDS	ACCEPTANCE	TEST FREQUENCY	INSPECTOR/CC	DATE	INITIAL
1. ALL UTILITY TRENCHES & STRUCTURES							
TRENCH SUBGRADE	Native (6" to 8" LRL Max.)	Moisture Density Relationship of Soils (AASHTO T 180) In-Place Density and Moisture Content (AASHTO 319 Method B)	95% Max. Dry Density	One in-place density test every 100' linear feet. If project is less than 100' linear feet, one in-place density test per day OR per lift whichever test frequency is more restrictive			
PIPE BEDDING	3/4" minus Crushed Aggregate (6" to 8" Max. LRL) (Current ITO Spec 708.04) OR 5/8" minus Crushed Aggregate (6" to 8" Max. LRL) (Current WDOT/M41-10 Spec 9-33.9)	Moisture Density Relationship of Soils (AASHTO T 180) In-Place Density and Moisture Content (AASHTO 319 Method B)	95% Max. Dry Density	One in-place density test every lift per 100' linear feet. If project is less than 100' linear feet, one in-place density test per day OR per lift whichever test frequency is more restrictive. Test top 6" of 12" course			
16" FOOT [21"] OF FILL OVER PIPE	3/4" minus Crushed Aggregate (6" to 8" Max. LRL) (Current ITO Spec 708.04) OR 5/8" minus Crushed Aggregate (6" to 8" Max. LRL) (Current WDOT/M41-10 Spec 9-33.9)	Moisture Density Relationship of Soils (AASHTO T 180) In-Place Density and Moisture Content (AASHTO 319 Method B)	95% Max. Dry Density	One in-place density test every lift per 100' linear feet. If project is less than 100' linear feet, one in-place density test per day OR per lift whichever test frequency is more restrictive			
TRENCH BACKFILL UNDER PROPOSED ROAD & SIDEWALK	3/4" minus Crushed Aggregate (6" to 8" Max. LRL) (Current ITO Spec 708.04) OR 5/8" minus Crushed Aggregate (6" to 8" Max. LRL) (Current WDOT/M41-10 Spec 9-33.9)	Moisture Density Relationship of Soils (AASHTO T 180) In-Place Density and Moisture Content (AASHTO 319 Method B)	95% Max. Dry Density	One in-place density test every lift per 100' linear feet. If project is less than 100' linear feet, one in-place density test per day OR per lift whichever test frequency is more restrictive			
STRUCTURAL FILLS	As Spec'd by Engineer	As Spec'd by Engineer		As Spec'd by Engineer			
2. STORM MAINS							
CONCRETE TRENCH, Storm Sewer Pipe	As Spec'd by Engineer	As Spec'd by Engineer		As Spec'd by Engineer			
ALIGNMENT AND GRADE	NA	Per Manufacturer's Instructions	Certified & Visual by City	Per Page			
CONCRETE UNDERSEWER PIPE (Reinforced)	NA	Per Manufacturer's Instructions	Certified & Visual by City	Per Page			
PIPE SLOPE TEST	NA	# PSI for 15 minutes, 1/2 PSI Drop	If required by City, Engineer or Between Access Holes	Per Page			
MANHOLE	Concrete	City Standard	Certified & Visual by City	Per Page			
UNDERSEWER TRENCH	NA	Per Manufacturer's Instructions	Certified & Visual by City	Per Page			
3. WATER MAINS							
CONCRETE TRENCH, Water Main	As Spec'd by Engineer	As Spec'd by Engineer		As Spec'd by Engineer			
ALIGNMENT AND GRADE	NA	Per Manufacturer's Instructions	Certified & Visual by City	Per Page			
CONCRETE UNDERSEWER PIPE (Reinforced)	NA	Per Manufacturer's Instructions	Certified & Visual by City	Per Page			
PIPE SLOPE TEST	NA	# PSI for 15 minutes, 1/2 PSI Drop	If required by City, Engineer or Between Access Holes	Per Page			
MANHOLE	Concrete	City Standard	Certified & Visual by City	Per Page			
UNDERSEWER TRENCH	NA	Per Manufacturer's Instructions	Certified & Visual by City	Per Page			
4. WATER MAINS							
CONCRETE TRENCH, Water Main	As Spec'd by Engineer	As Spec'd by Engineer		As Spec'd by Engineer			
ALIGNMENT AND GRADE	NA	Per Manufacturer's Instructions	Certified & Visual by City	Per Page			
CONCRETE UNDERSEWER PIPE (Reinforced)	NA	Per Manufacturer's Instructions	Certified & Visual by City	Per Page			
PIPE SLOPE TEST	NA	# PSI for 15 minutes, 1/2 PSI Drop	If required by City, Engineer or Between Access Holes	Per Page			
MANHOLE	Concrete	City Standard	Certified & Visual by City	Per Page			
UNDERSEWER TRENCH	NA	Per Manufacturer's Instructions	Certified & Visual by City	Per Page			
5. CONCRETE CURB, GUTTER & SIDEWALK							
CONCRETE	CLASS 259 - Approved Mix Design Required with Min. Cement Content of 350 (kg/m ³), Min. Water/Cement Ratio of .44, a WRA, and an AEA	AASHTO T-22 Compressive Strength of Concrete AASHTO T-21 Making Test Specimens AASHTO T-118 Bulk of Hydraulic Cement Concrete AASHTO T-152 Air Content of Freshly Mixed Concrete AASHTO T-209 Theoretical Maximum Density (TRC) WAGTIC Tm 2 Sampling Freshly Mixed Concrete	Min. 28 day Compressive Strength = 2000 psi Water/Cement Ratio shall be 0.44 Max. Slump = 9 inches Air Content = 6.2% ± 1.5 Temperature = 50°F - 80°F	1 Test Per 500 LF/Min 2 Tests 1 of Each Test Minimum per Day, or 1 of Each Test per 50' CY			
CRUSHED AGGREGATE BASE COURSE	3/4" minus Crushed Aggregate (6" Max. LRL) (Current ITO Spec 708.04) OR 5/8" minus Crushed Aggregate (6" Max. LRL) (Current WDOT/M41-10 Spec 9-33.9)	Moisture Density Relationship of Soils (AASHTO T 180) In-Place Density and Moisture Content (AASHTO 319 Method B)	95% Max. Dry Density	1 Tests Per 500 LF/Min 2 Tests			
ALIGNMENT AND GRADE	NA	Per Manufacturer's Instructions	Certified & Visual by City	Per Page			
TEXTURE/FLATNESS/STRAIGHTNESS	NA	Visual	Certified & Visual by City	Per Page			
FINISH	NA	Visual	Certified & Visual by City	Per Page			
6. ASPHALTIC CONCRETE PAVING							
SUPERPAVE HOT MIX ASPHALT	ITD 406 Superpave Class SP2, SP3 and SP4 (2.0 to 1.0 Spacing 400 and 700.0)	Class SP2: AASHTO T-208, Asphalt Content AASHTO T-27 & T-11, Sieve Analysis WAGTIC Tm 2 In-Place Density of Bituminous Mixes AASHTO T-209, Theoretical Maximum Density (TRC) Class SP3 and SP4: AASHTO T-208, Asphalt Content AASHTO T-27 & T-11, Sieve Analysis AASHTO T-166 Method A, Air Voids, and Voids in Mineral Aggregates (VMA) WAGTIC Tm 2 In-Place Density of Bituminous Mixes AASHTO T-209, Theoretical Maximum Density (TRC)	ITD Section 400.00 Asphalt Content = C.M.P. Value +/- 0.3% Sieve Analysis - Table 400.03-5 Air Voids = 4.0 +/- 1.0% Voids in Mineral Aggregates, at N design 100.0 Minimum (Table 1.00) Voids Filled with Asphalt - Table 703.05-4 In-Place Density - 99.96% at Maximum Theoretical	1 Test Per 750 Ton; Minimum of 1 Test per Project. Random Sample Locations Determined by City Engineer			
CRUSHED AGGREGATE BASE COURSE*	Same test requirement as under 5. Concrete Curb, Gutter & Sidewalk						
7. EROSION & SEDIMENT CONTROLS							
EROSION & SEDIMENT CONTROLS	Per Approved Plan	Per Plan and Manufacturer's Instructions	Visual or After Every Rainfall	Per Page			
8. TRAFFIC CONTROL							
TRAFFIC CONTROL	Per Approved Plan	Current Approved MUTCD/ATSSA	Continuous	Per Page			
9. PRIVATE STORMWATER SYSTEM							
PRIVATE STORMWATER SYSTEM	Per Approved Plan	City Development #69.109	Certified & Visual by City	Per Page			
10. RECORD DRAWINGS							
RECORD DRAWINGS	As Spec'd by Engineer	As Spec'd by Engineer	Certified & Visual by City	Per Page			
11. ENGINEER'S CERTIFICATION							
DATE LAST REVISED	September 2016						

PUBLIC IMPROVEMENT QUANTITIES

- Mobilization, Insurance, Etc. Lump Sum
- Existing Pavement Removal & Grading Lump Sum
- 10" Base Course 70 S.Y.
- 3" A.C. Pavement 70 S.Y.
- Conc. "High Back" Curb & Gutter 110 L.F.
- 5' Conc. Sidewalk 35 L.F.
- Conc. Pedestrian Ramps 1 Each
- Conc. Driveway Approach (24' wide) 1 Each
- Traffic Control Lump Sum
- Construction Phase S.W. Management Lump Sum

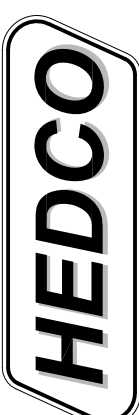
SHEET INDEX

- C1 NOTES & DETAILS
- C2 EXISTING SITE PLAN
- C3 CONSTRUCTION EROSION & SEDIMENT CONTROL PLAN
- C4 SITE DEVELOPMENT PLAN
- C5 SITE GRADING PLAN
- C6 STREET FRONTAGE IMPROVEMENTS
- C7 STANDARD DETAILS
- C8 STANDARD DETAILS
- C9 STANDARD DETAILS

2017-10-18 REVIEW/ BID SET - NOT FOR CONSTRUCTION

LOCOGRINZ RENOVATION PROJECT

228-232 THAIN ROAD
LEWISTON, IDAHO



HAMMOND ENGINEERING & DEVELOPMENT CO.
528 BRYDEN AVENUE LEWISTON, IDAHO 83501
(208) 798-5422

SCALE	SHEET SIZE	REVISION	DESCRIPTION	CHECKED	APPROVED
DRAWN BY: MEE	D	REV. DATE			
DATE: 03-29-17	JSH	A	8-17-17		
SHEET: 1702	CO	B	10-18-17		
DRAWING #: 1702-CO					

SHEET **CO**

NOTES:

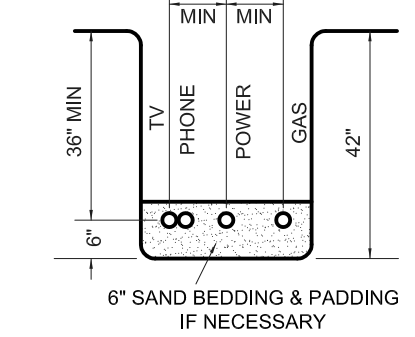
1. ALL EARTHWORK SHALL BE COMPACTED TO 95% OF AASHTO T-99 PROCTOR VALUE.
2. ALL POTABLE WATER LINES RUNNING FROM MAIN TO METERS WILL BE 1" AND METERS WILL BE 3/4" TYP.
3. SANITARY SEWERS SHALL HAVE 3.0' MIN. COVER & SERVICE LATERALS SHALL HAVE 2.0' MIN. GRADE. STORM DRAINS SHALL HAVE 2.0' MIN. COVER.
4. ALL WORK DONE WITHIN CITY RIGHT OF WAY TO BE DONE IN ACCORDANCE WITH CITY STANDARDS.
5. WATER MAIN PIPING, VALVES, FIRE HYDRANTS AND WATER METERS SHALL BE FURNISHED AND INSTALLED IN ACCORDANCE WITH CITY OF LEWISTON STANDARDS.
6. ALL AVISTA CONDUITS WILL BE SCHEDULE 40 GRAY ELECTRICAL CONDUIT (LARGE SWEEPS, LONG COUPLERS)
7. A RIGHT-OF-WAY PERMIT SHALL BE OBTAINED THROUGH THE PUBLIC WORKS DEPARTMENT PRIOR TO ANY WORK WITHIN PUBLIC RIGHT-OF-WAY.
8. THE CONTRACTOR SHALL BE RESPONSIBLE FOR PROTECTING ALL UNDERGROUND UTILITIES AT ALL TIMES DURING CONSTRUCTION. THE CONTRACTOR SHALL BE RESPONSIBLE FOR REPAIRING ALL DAMAGES AT NO ADDITIONAL COST TO THE OWNER. THE LOCATIONS OF UNDERGROUND UTILITIES SHOWN ON THE PROJECT DRAWINGS ARE APPROXIMATE AND BASED ON EXISTING RECORDS AND FIELD SURVEYS. THE NUMBERS AND LOCATIONS OF ALL UNDERGROUND UTILITIES SHOWN ARE FOR INFORMATIONAL PURPOSES ONLY. FOR YOUR SAFETY, STATE LAW REQUIRES THAT THE CONTRACTOR SHALL CALL 811 "CALL BEFORE YOU DIG" FOR UTILITY FIELD LOCATIONS PRIOR TO COMMENCING EXCAVATION ON SITE. THE CONTRACTOR SHALL COORDINATE ALL WORK WITH THE RELEVANT UTILITY COMPANIES.
9. SITE DISTANCES FOR ABUTTING PROPERTIES, DRIVEWAYS AND INTERSECTIONS SHALL BE MAINTAINED.
10. ALL CONSTRUCTION NOT SPECIFICALLY MENTIONED OR SHOWN SHALL CONFORM TO CITY ORDINANCES AND STANDARDS.
11. A SWPPP & NOI IS REQUIRED FOR THIS PROJECT. THE CONTRACTOR SHALL REFERENCE THE STORMWATER POLLUTION PREVENTION MANUAL (SWPPP) FOR ALL EROSION CONTROL PROCEDURES ON SITE.

REV. DATE	DESCRIPTION	CHECKED	APPRO.

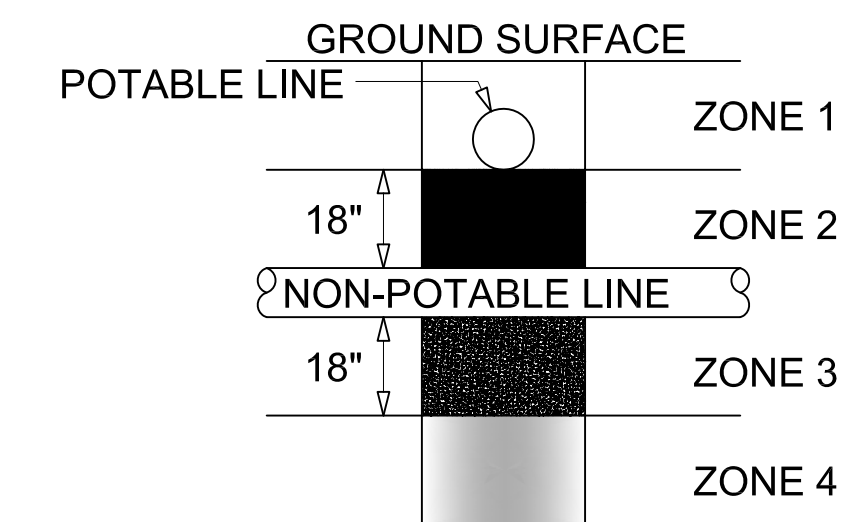


SCALE	SHEET SIZE	DRAWN BY	CHECKED BY	JOB #	DRAWING #
	D	MEE	JSH	1702	1702-C2
		DATE: 03-29-17			
		SHEET		C1	

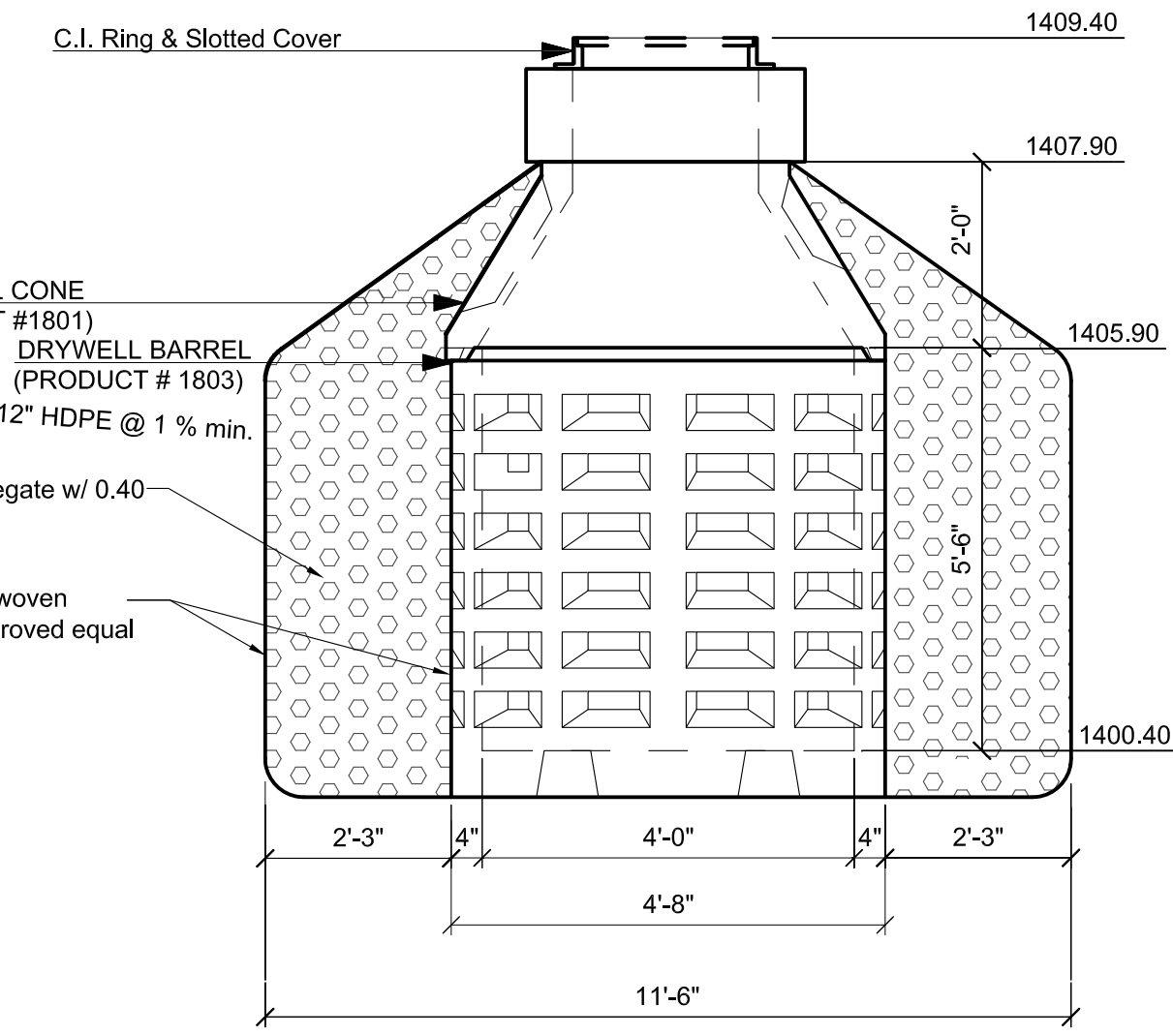
FRANCHISE UTILITIES TRENCH DETAIL



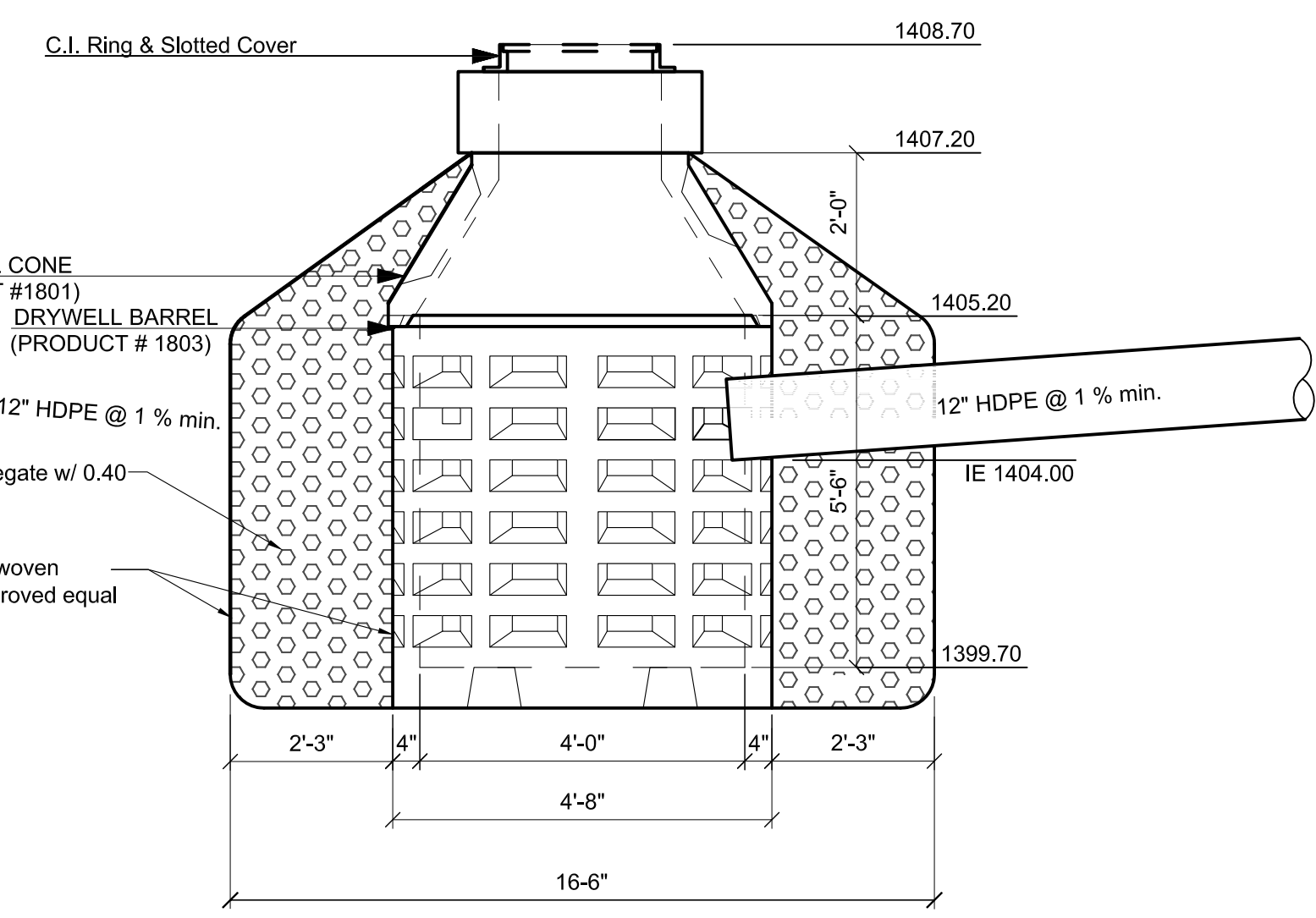
LINE CROSSINGS



- ZONE 1:**
 A) Potable Water and Non-potable Mains and Service Lines must be separated by at least 18 inches and
 B) One full, uncut length of Non-Potable pipe must be centered so that the joints are as far as possible from the crossing.
ZONE 2: Potable line < 18" over the top of Non-Potable line (Main and Services).
 A) One full, uncut length of Non-Potable Water pipe must be centered on the crossing so that the joints are as far as possible from the Non-Potable line and either B)
 Non-Potable line must be constructed to Potable water pipe standards and pressure tested for water tightness for a horizontal distance of 10 feet on both sides of crossing.
 or C)
 Non-Potable or potable line must be cased in a larger diameter carrier pipe for a horizontal distance of 10 feet on both sides of the crossing, with no joints.
ZONE 3: Same requirements as Zone 2 except the Non-Potable line must also be supported above the crossing to prevent settling.
ZONE 4: Same requirements as Zone 1 except the Non-potable line must also be supported above the crossing to prevent settling.
 Sewage mains shall have at least eighteen inches of clearance from Potable Water mains and Zones 2 and 3 placements are prohibited. Separation requirements also apply to Potable and Non-Potable service lines controlled by the system owner and extending to the property line, service meter, or cleanout. Refer to IDAPA 58.1.08.542.07: Idaho Rules for Public Drinking Water Systems and IDAPA 58.01.16.430.0 Idaho Wastewater Rules.

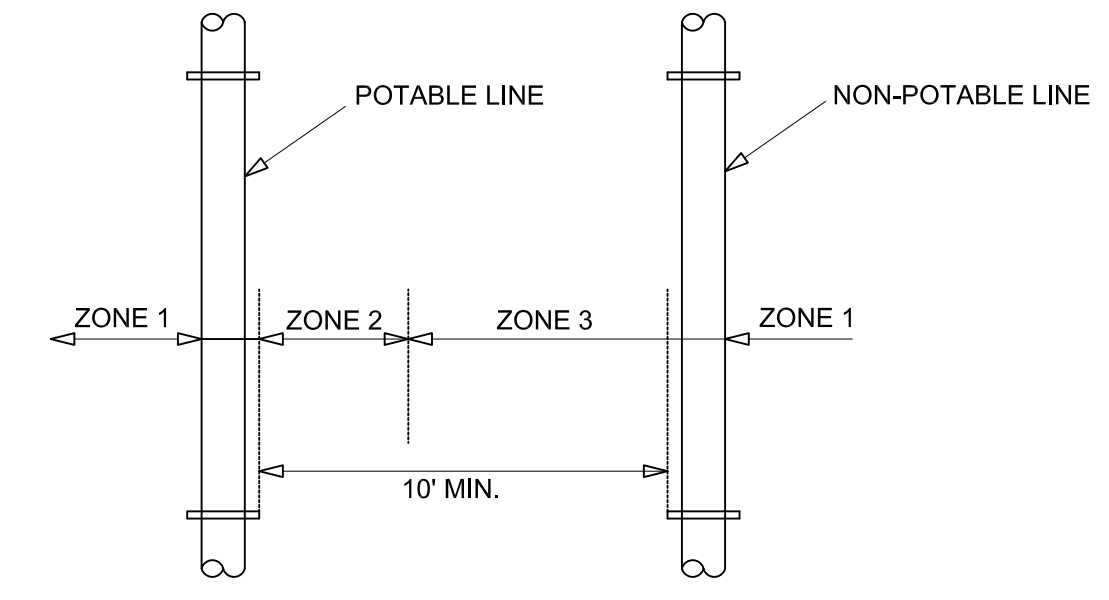


DRY WELL SECTION
DETAIL A
 NO SCALE 1621-C4



DRY WELL SECTION
DETAIL B
 NO SCALE 1621-C4

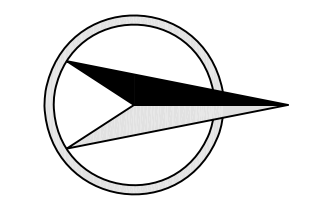
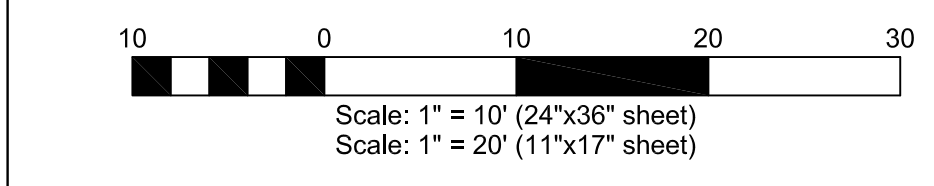
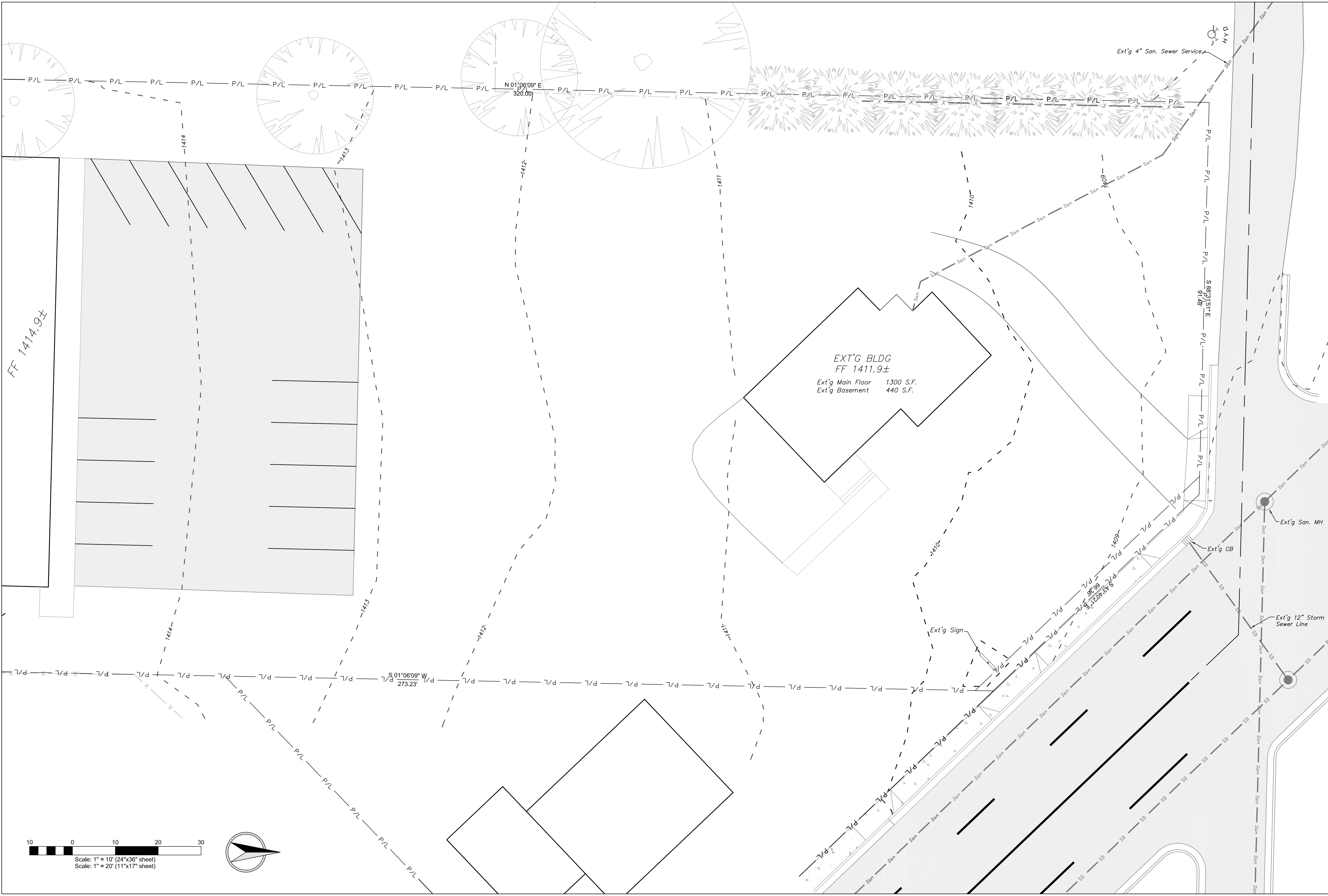
LINE SEPARATIONS



- ZONE 1: (MORE THAN 10 FEET APART)**
ZONE 2: (FROM 6 TO 10 FEET APART)
 * Potable and Non-Potable mains separated by at least 6 feet at outside walls and
 * Potable main higher in elevation than Non-Potable mains and
 * Non-Potable mains constructed with Potable water class pipe and pressure tested for water-tightness.
Zone 3: (CLOSER THAN 6 FEET APART)
 * For Mains and Services, Design Engineer to submit data to Department for review and approval that this intallation will protect public health and environment and non-potable line constructed with potable water class pipe.

LOGOGRINZ RENOVATION PROJECT
GENERAL NOTES & DETAILS
228-232 THAIN ROAD
LEWISTON, IDAHO





SCALE	1"=20'
DRAWN BY	MEE
DATE	03-29-17
CHECKED BY	JSH
JOB #	1702
SHEET	C2
DRAWING #	1702-C2

LOGOGRINZ RENOVATION PROJECT

EXISTING SITE PLAN

228-232 THAIN ROAD

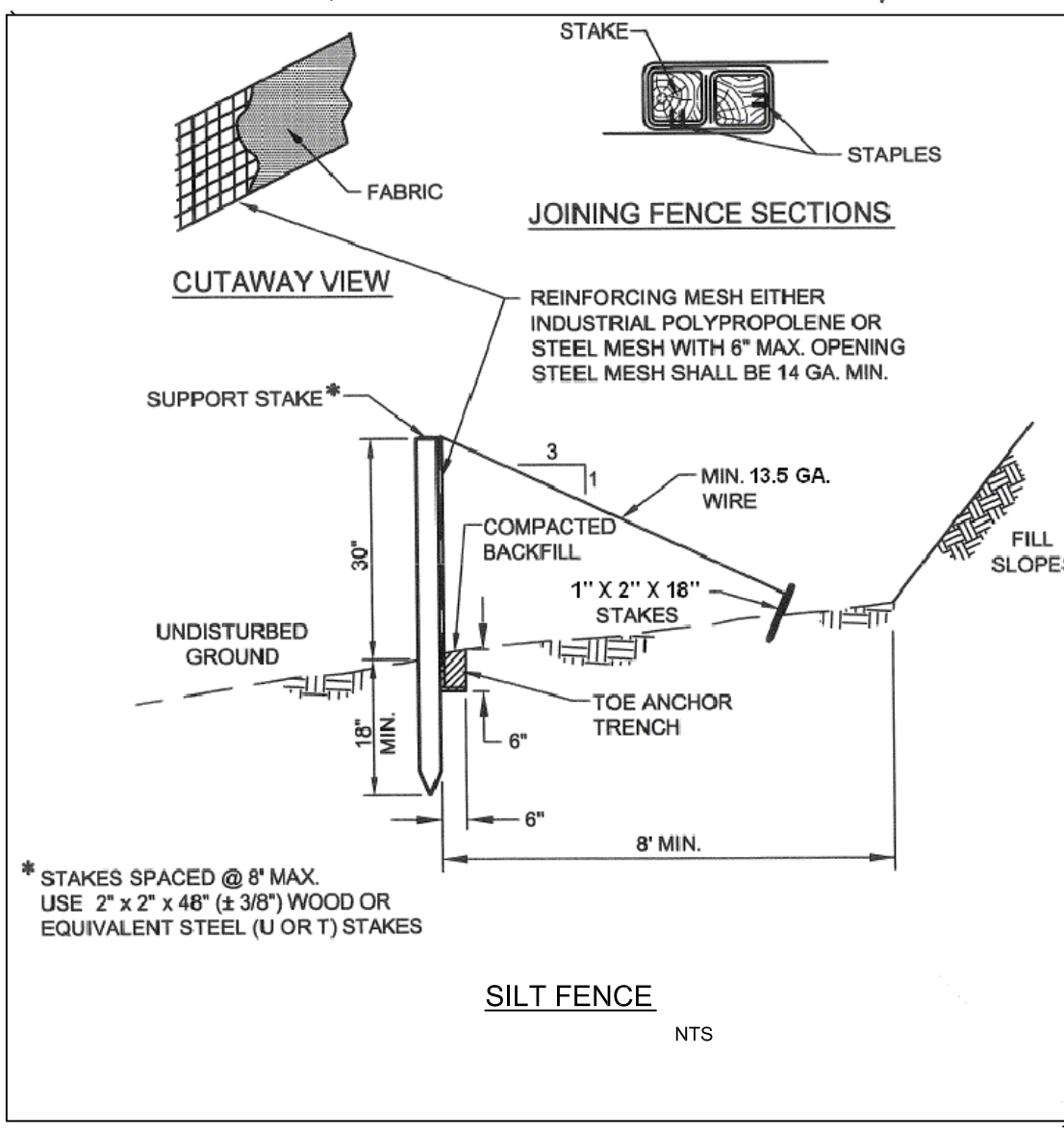
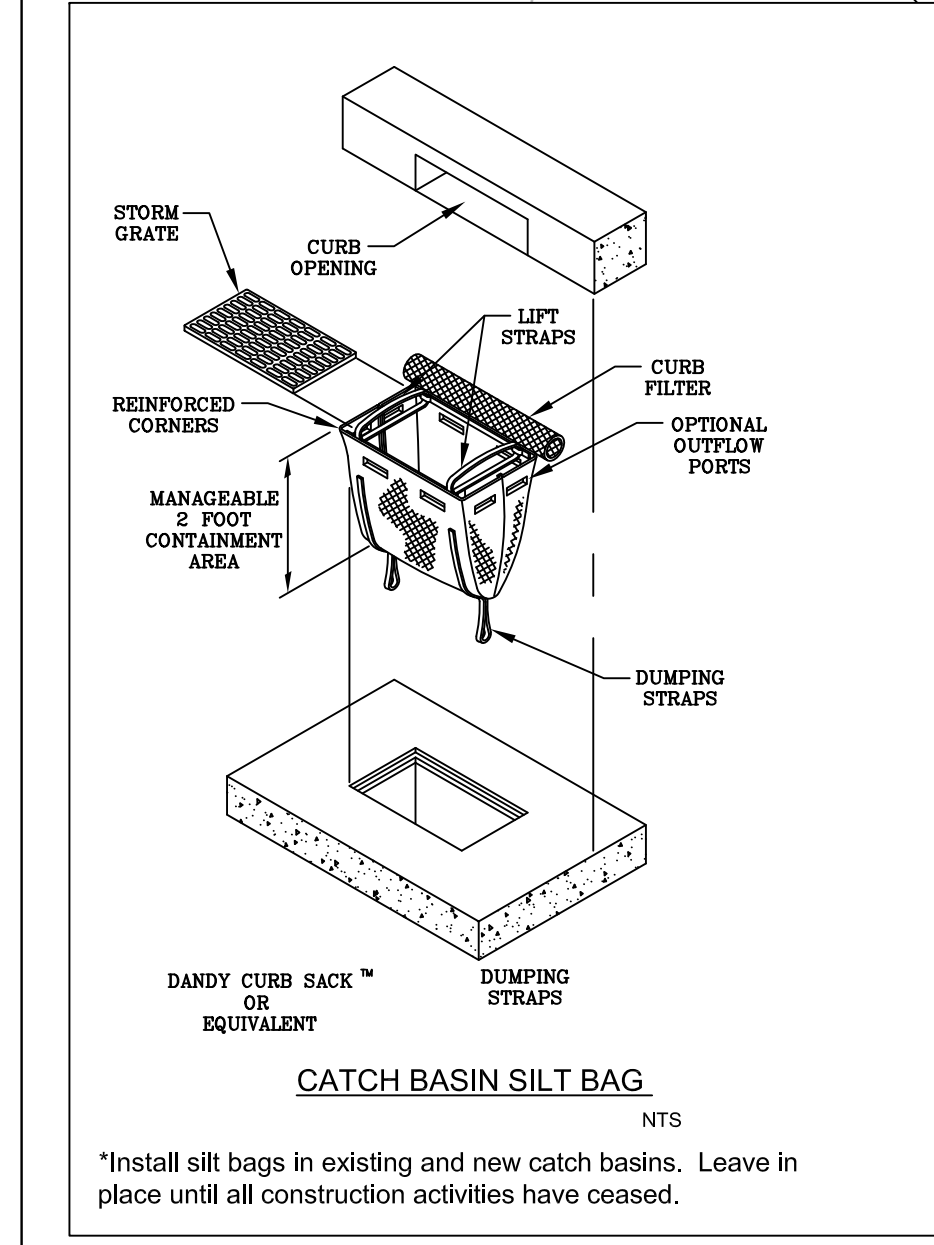
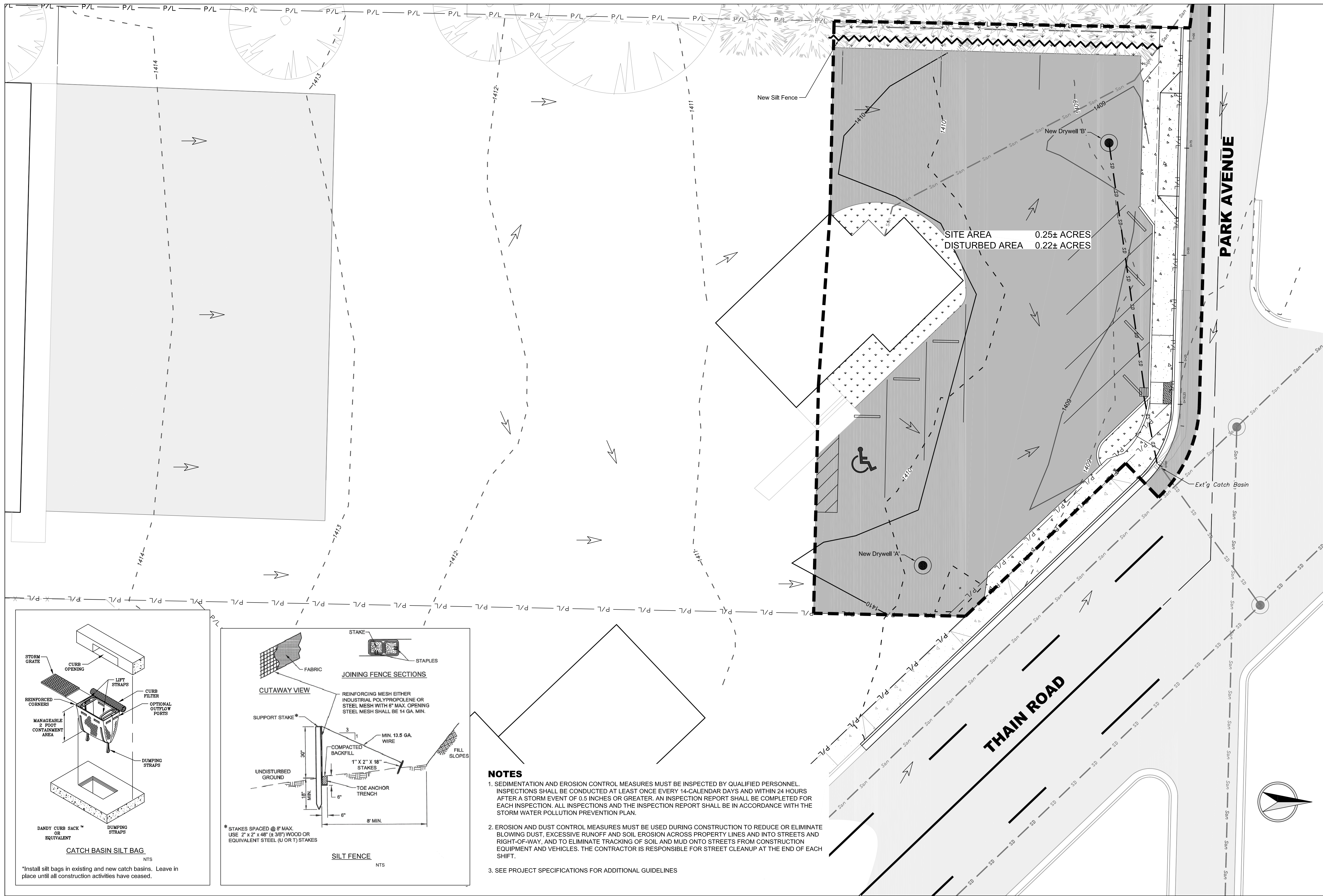
LEWISTON, IDAHO

HEDCO

HAMMOND ENGINEERING & DEVELOPMENT CO.
528 BRYDEN AVENUE LEWISTON, IDAHO 83501
(208) 750-5422

REV. LTR.	DATE	DESCRIPTION	CHECKED	APPR.

SHEET **C2**

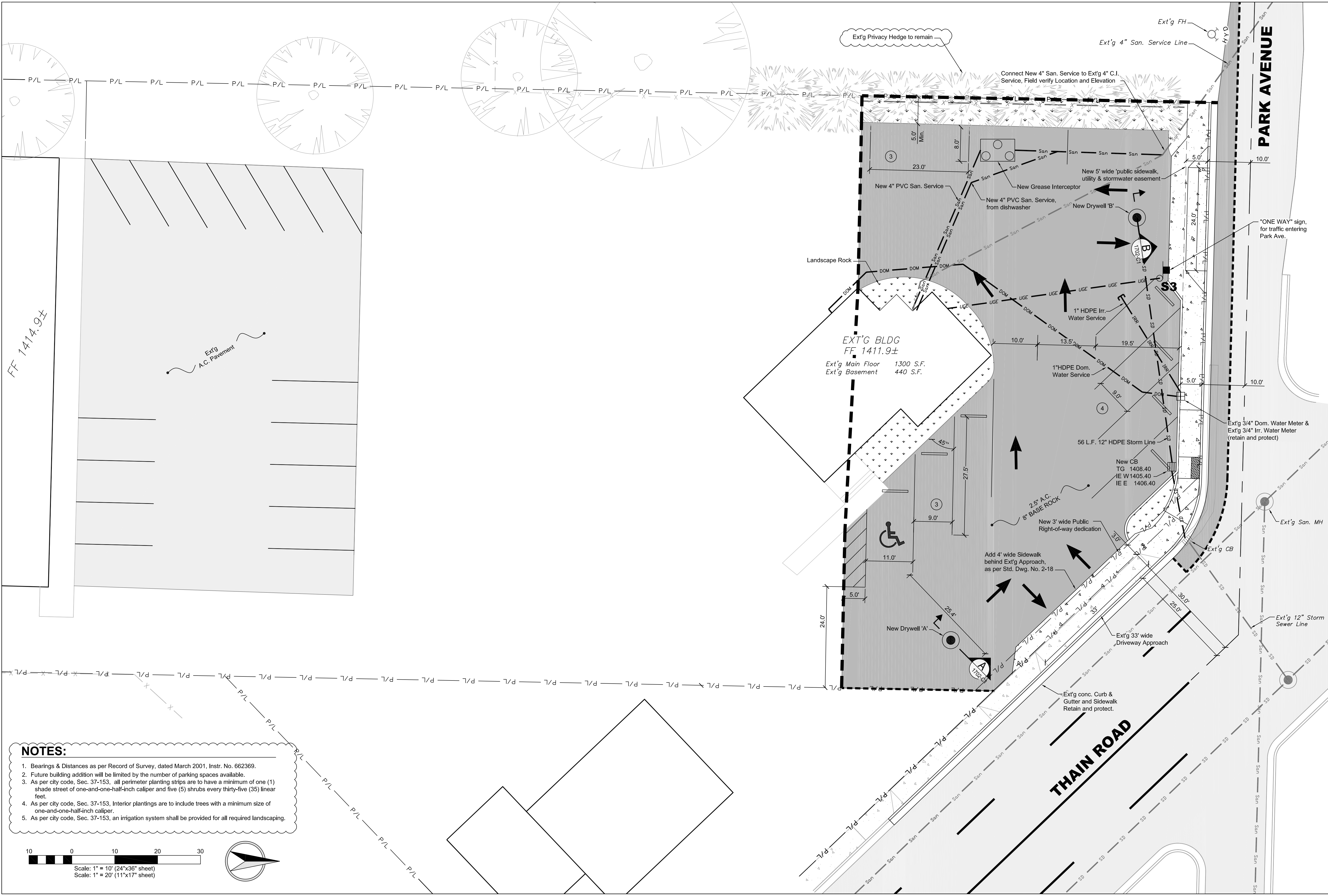


- NOTES**
1. SEDIMENTATION AND EROSION CONTROL MEASURES MUST BE INSPECTED BY QUALIFIED PERSONNEL. INSPECTIONS SHALL BE CONDUCTED AT LEAST ONCE EVERY 14-CALENDAR DAYS AND WITHIN 24 HOURS AFTER A STORM EVENT OF 0.5 INCHES OR GREATER. AN INSPECTION REPORT SHALL BE COMPLETED FOR EACH INSPECTION. ALL INSPECTIONS AND THE INSPECTION REPORT SHALL BE IN ACCORDANCE WITH THE STORM WATER POLLUTION PREVENTION PLAN.
 2. EROSION AND DUST CONTROL MEASURES MUST BE USED DURING CONSTRUCTION TO REDUCE OR ELIMINATE BLOWING DUST, EXCESSIVE RUNOFF AND SOIL EROSION ACROSS PROPERTY LINES AND INTO STREETS AND RIGHT-OF-WAY, AND TO ELIMINATE TRACKING OF SOIL AND MUD ONTO STREETS FROM CONSTRUCTION EQUIPMENT AND VEHICLES. THE CONTRACTOR IS RESPONSIBLE FOR STREET CLEANUP AT THE END OF EACH SHIFT.
 3. SEE PROJECT SPECIFICATIONS FOR ADDITIONAL GUIDELINES

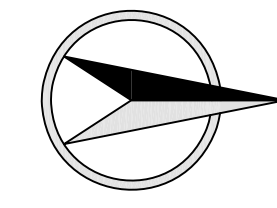
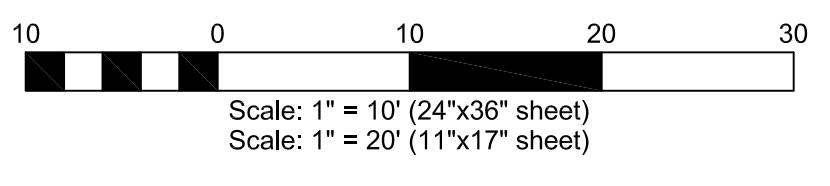
REV. LTR.	DATE	DESCRIPTION	CHECKED	APPRO.
B	10-16-17	Revised as per review comments dated 9/27/2017: Reduced extent of project		

SCALE	1"=10'	CHECKED BY	JSH
DRAWN BY	MEE	DATE	03-29-17
SHEET	C3	DRAWING #	1702-C3

CONSTRUCTION EROSION & SEDIMENT CONTROL PLAN SITE GRADING PLAN 228-232 THAIN ROAD LEWISTON, IDAHO	
<small>HAMMOND ENGINEERING & DEVELOPMENT CO. 529 BRYDEN AVENUE LEWISTON, IDAHO 83501 (208) 786-5422</small>	
SHEET C3	



- NOTES:**
1. Bearings & Distances as per Record of Survey, dated March 2001, Instr. No. 662369.
 2. Future building addition will be limited by the number of parking spaces available.
 3. As per city code, Sec. 37-153, all perimeter planting strips are to have a minimum of one (1) shade street of one-and-one-half-inch caliper and five (5) shrubs every thirty-five (35) linear feet.
 4. As per city code, Sec. 37-153, interior plantings are to include trees with a minimum size of one-and-one-half-inch caliper.
 5. As per city code, Sec. 37-153, an irrigation system shall be provided for all required landscaping.



REVISION	DATE	DESCRIPTION	CHECKED	APPRO.
A	8-17-17	Phased Construction		
B	10-18-17	Revised as per review comments dated 9/27/2017; Redbook extent of project		

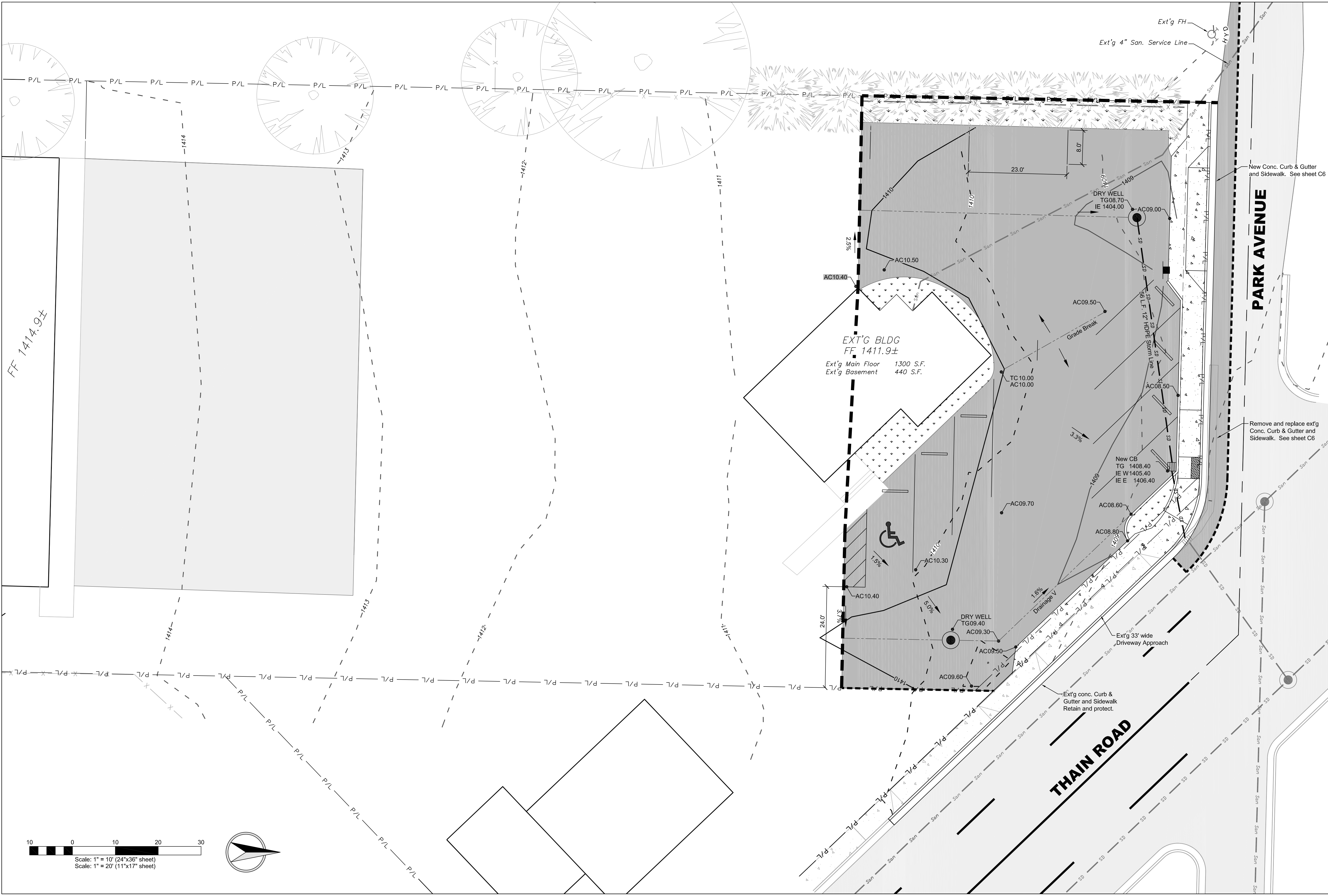
SCALE	1" = 10'
DRAWN BY	MEE
CHECKED BY	JSH
DATE	03-29-17
SHEET	C4
DRAWING #	1702-C4

REGISTERED PROFESSIONAL ENGINEER AND SURVEYOR	STATE OF IDAHO
#2102	8/17/17
DAVID S. SHAMUS	

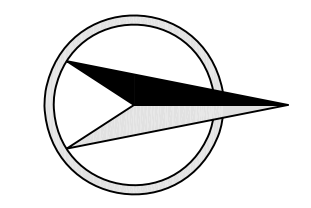
LOCGRINZ RENOVATION PROJECT
SITE DEVELOPMENT PLAN
228-232 THAIN ROAD
LEWISTON, IDAHO

HEDCO
HAMMOND ENGINEERING & DEVELOPMENT CO. 528 BRYDEN AVENUE LEWISTON, IDAHO 83501 (208) 786-5422

SHEET **C4**



Scale: 1" = 10' (24"x36" sheet)
 Scale: 1" = 20' (11"x17" sheet)



REV. LTR.	DATE	DESCRIPTION	CHECKED	APPRO.
A	8-17-17	Phase 1 Construction		
B	10-18-17	Revised as per review comments dated 9/7/2017; Redbook extent of project		

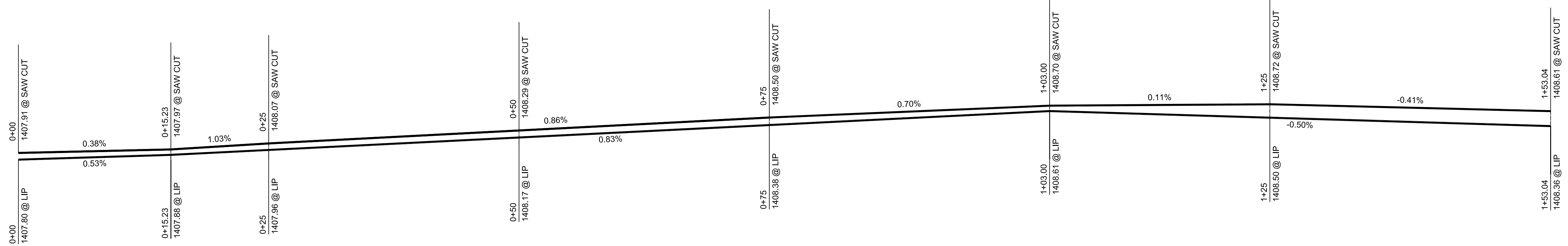
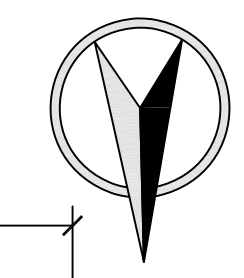
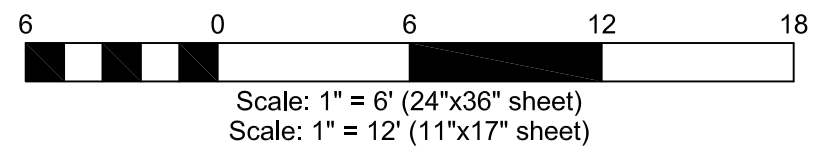
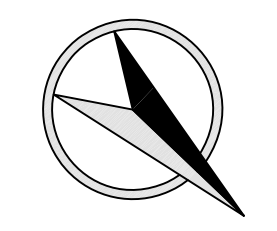
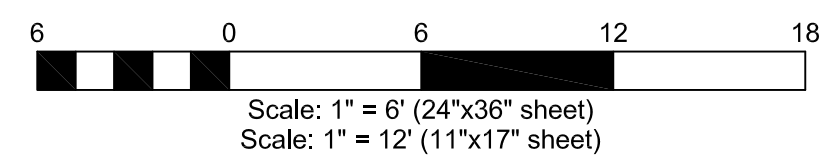
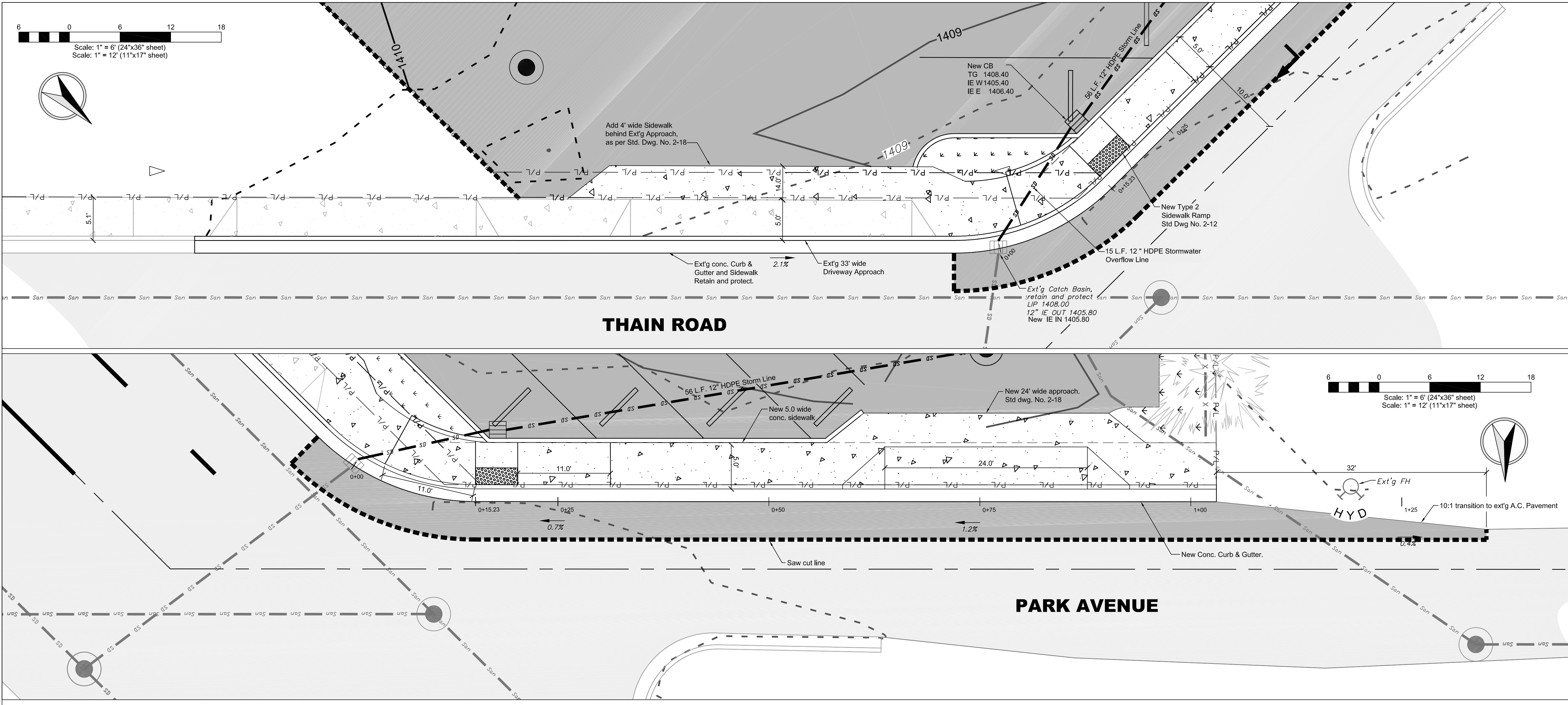
SCALE	1" = 10'
SHEET SIZE	D
DRAWN BY	MEE
CHECKED BY	JSH
DATE	03-29-17
JOB #	1702
SHEET	C5
DRAWING #	1702-C5

REGISTERED PROFESSIONAL ENGINEER AND SURVEYOR	STATE OF IDAHO
#2102	8/17/17
NAME OF FIRM	HEDCO

LOGOGRINZ RENOVATION PROJECT
SITE GRADING PLAN
228-232 THAIN ROAD
LEWISTON, IDAHO

HEDCO
 HAMMOND ENGINEERING & DEVELOPMENT CO.
 528 BRYDEN AVENUE LEWISTON, IDAHO 83501
 (208) 786-5422

SHEET **C5**



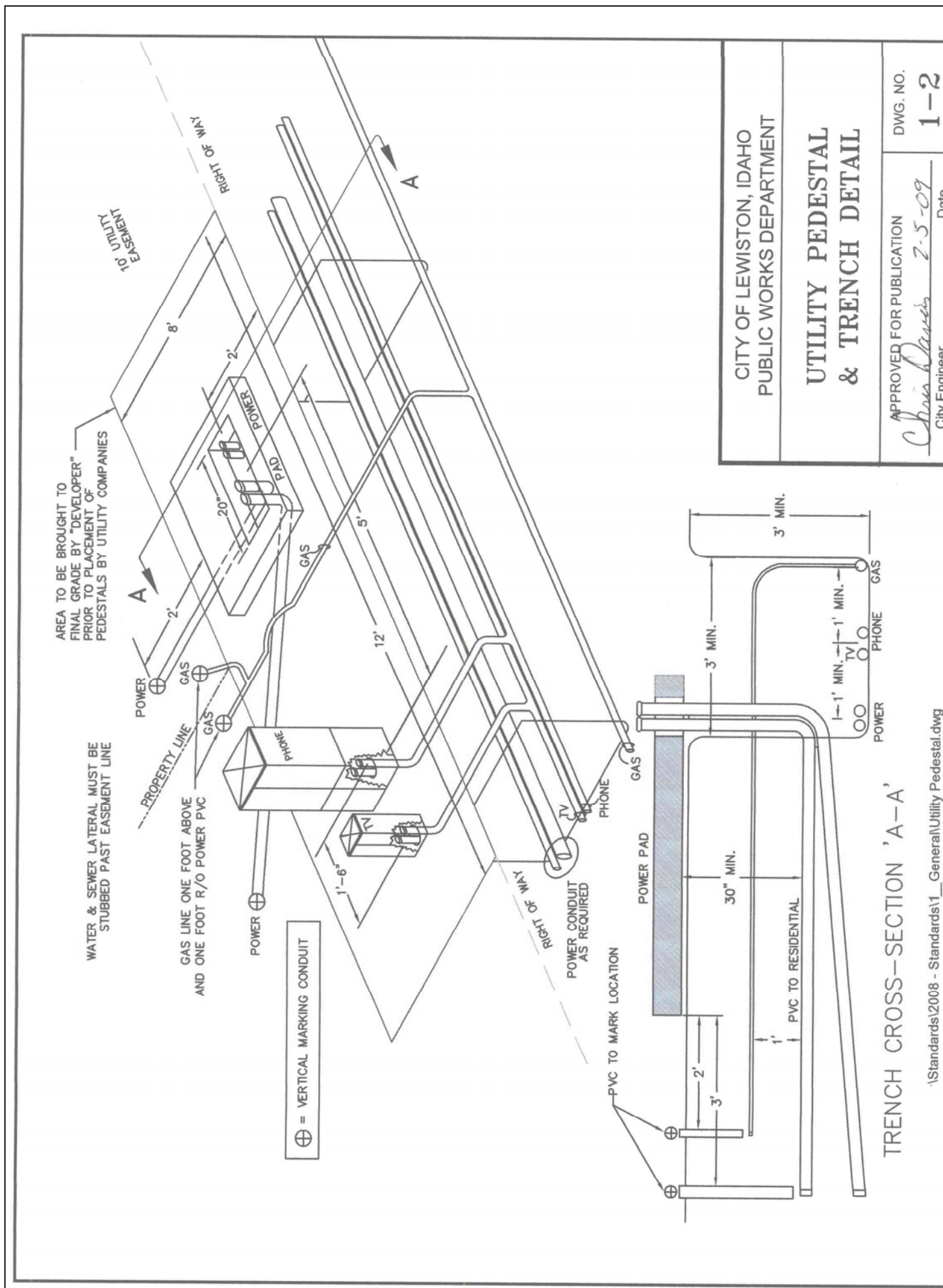
REV. DATE	DESCRIPTION	CHECKED	APPRO.
A 10-17-17	Phased Construction		
B 10-18-17	Revised as per review comments dated 9/7/2017; Reduced extent of project		



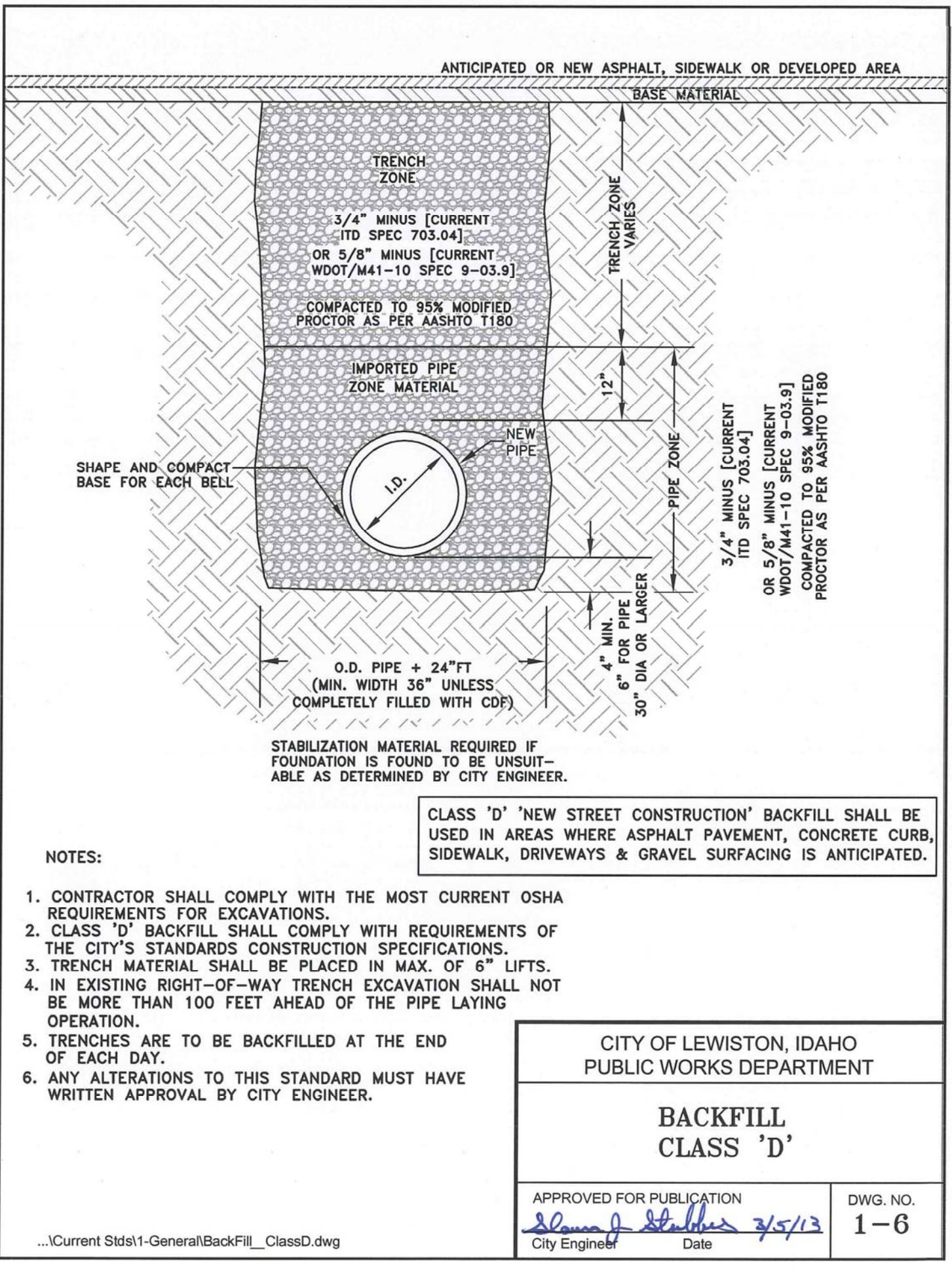
SCALE	SHEET SIZE	DRAWN BY	CHECKED BY	JOB #	SHEET #	DRAWING #
1" = 10'	D	MEE	JSH	1702	C6	1702-C6

**LOGOCRINZ RENOVATION PROJECT
FRONTAGE IMPROVEMENTS
228-232 THAIN ROAD
LEWISTON, IDAHO**



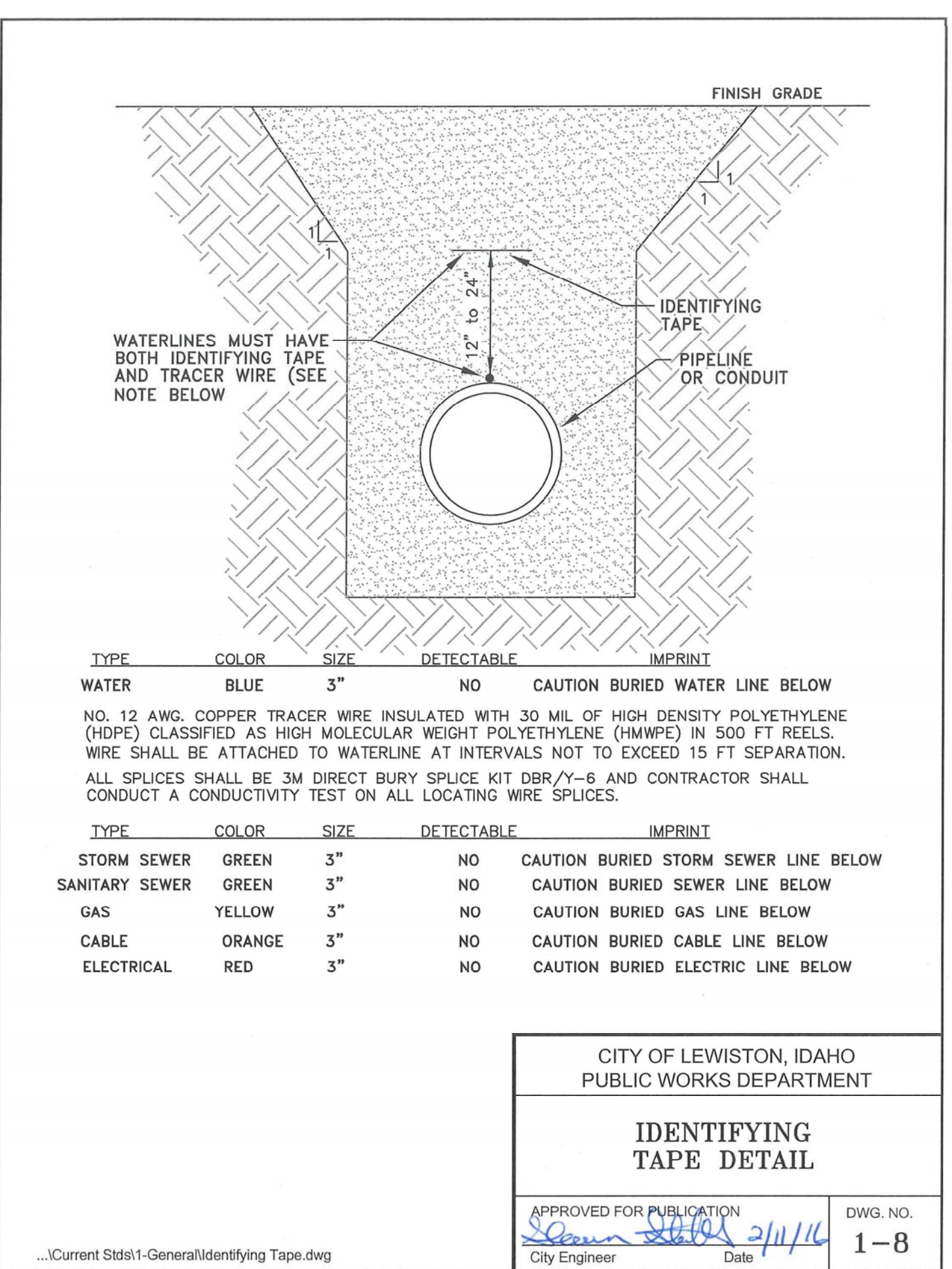


CITY OF LEWISTON, IDAHO
PUBLIC WORKS DEPARTMENT
UTILITY PEDESTAL & TRENCH DETAIL
APPROVED FOR PUBLICATION
City Engineer
Date
DWG. NO. 1-2



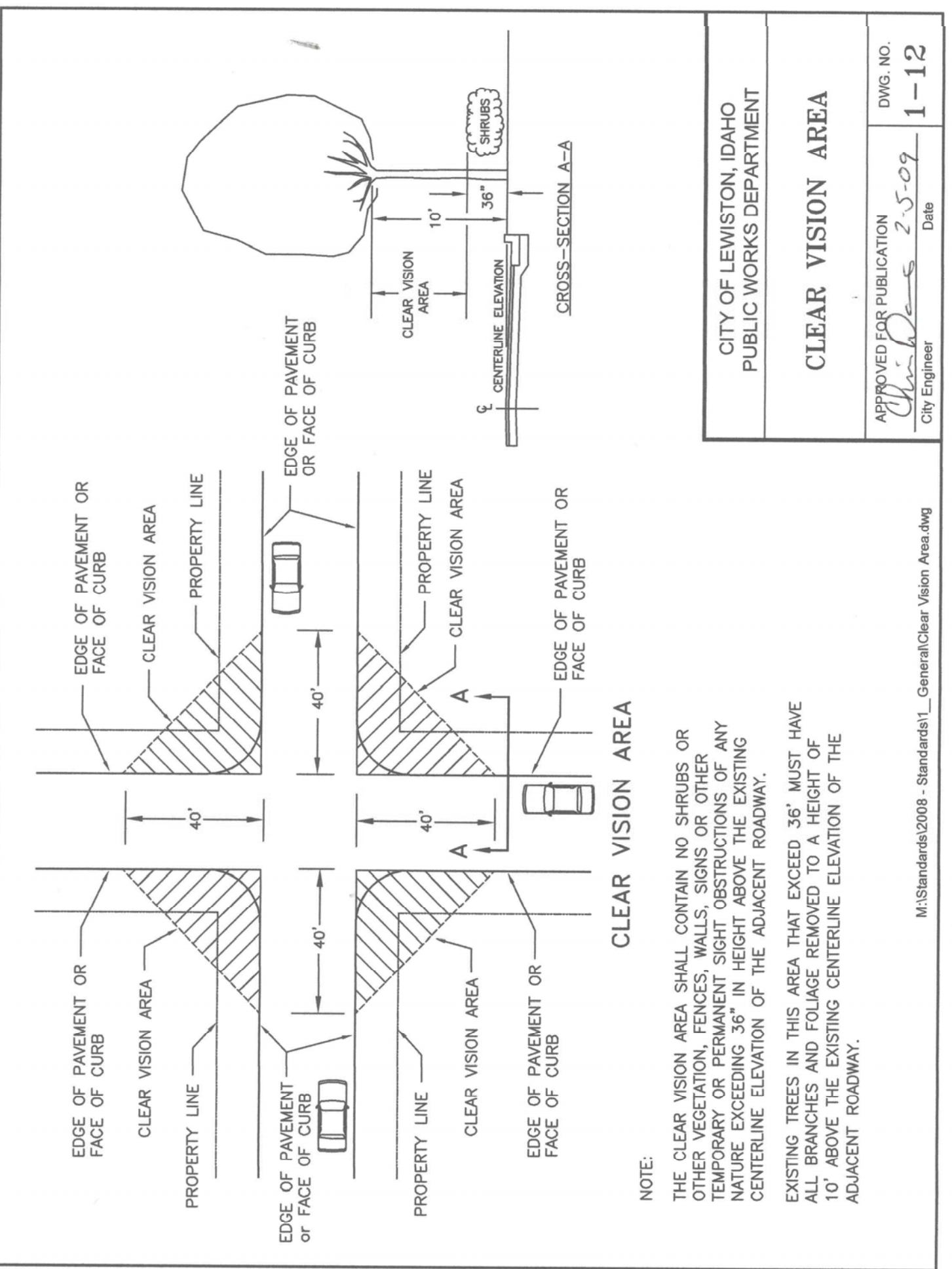
NOTES:
1. CONTRACTOR SHALL COMPLY WITH THE MOST CURRENT OSHA REQUIREMENTS FOR EXCAVATIONS.
2. CLASS 'D' BACKFILL SHALL COMPLY WITH REQUIREMENTS OF THE CITY'S STANDARDS CONSTRUCTION SPECIFICATIONS.
3. TRENCH MATERIAL SHALL BE PLACED IN MAX. OF 6\"/>

CITY OF LEWISTON, IDAHO
PUBLIC WORKS DEPARTMENT
BACKFILL CLASS 'D'
APPROVED FOR PUBLICATION
City Engineer
Date
DWG. NO. 1-6



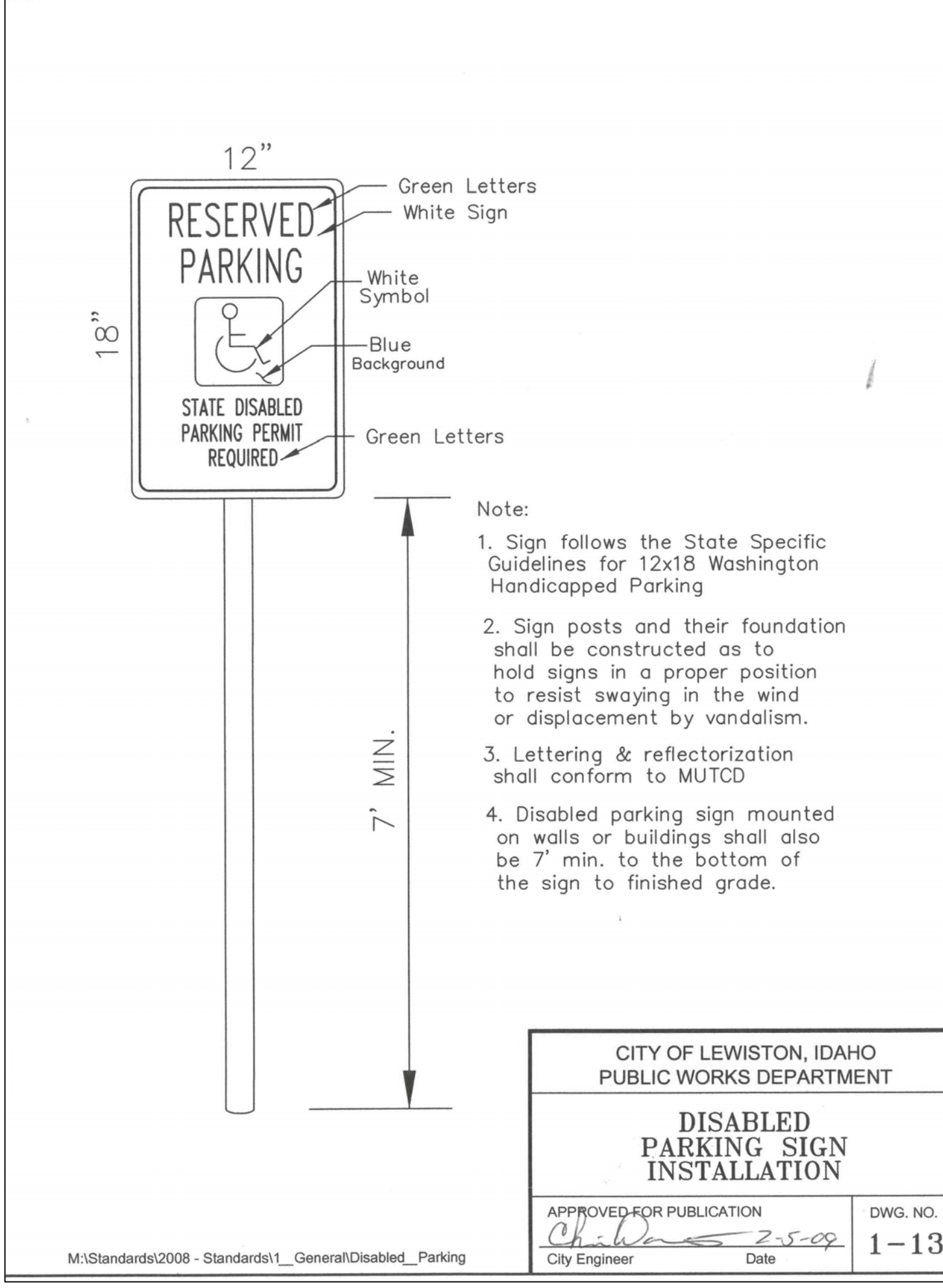
TYPE	COLOR	SIZE	DETECTABLE	IMPRINT
WATER	BLUE	3"	NO	CAUTION BURIED WATER LINE BELOW
STORM SEWER	GREEN	3"	NO	CAUTION BURIED STORM SEWER LINE BELOW
SANITARY SEWER	GREEN	3"	NO	CAUTION BURIED SEWER LINE BELOW
GAS	YELLOW	3"	NO	CAUTION BURIED GAS LINE BELOW
CABLE	ORANGE	3"	NO	CAUTION BURIED CABLE LINE BELOW
ELECTRICAL	RED	3"	NO	CAUTION BURIED ELECTRIC LINE BELOW

CITY OF LEWISTON, IDAHO
PUBLIC WORKS DEPARTMENT
IDENTIFYING TAPE DETAIL
APPROVED FOR PUBLICATION
City Engineer
Date
DWG. NO. 1-8

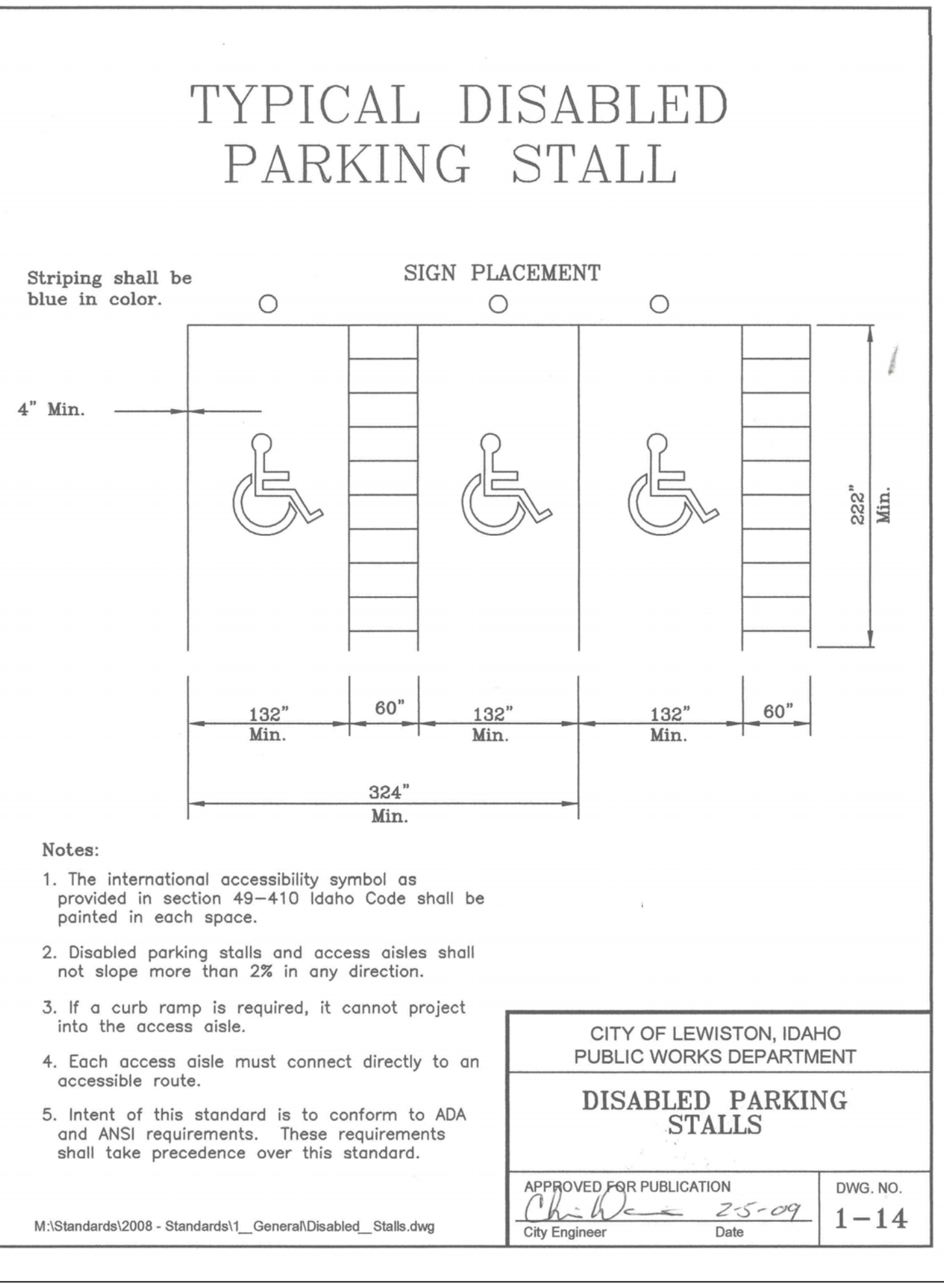


NOTE:
THE CLEAR VISION AREA SHALL CONTAIN NO SHRUBS OR OTHER VEGETATION, FENCES, WALLS, SIGNS OR OTHER TEMPORARY OR PERMANENT SIGHT OBSTRUCTIONS OF ANY KIND. THE CLEAR VISION AREA SHALL BE MEASURED FROM THE CENTERLINE ELEVATION OF THE ADJACENT ROADWAY.
EXISTING TREES IN THIS AREA THAT EXCEED 36\"/>

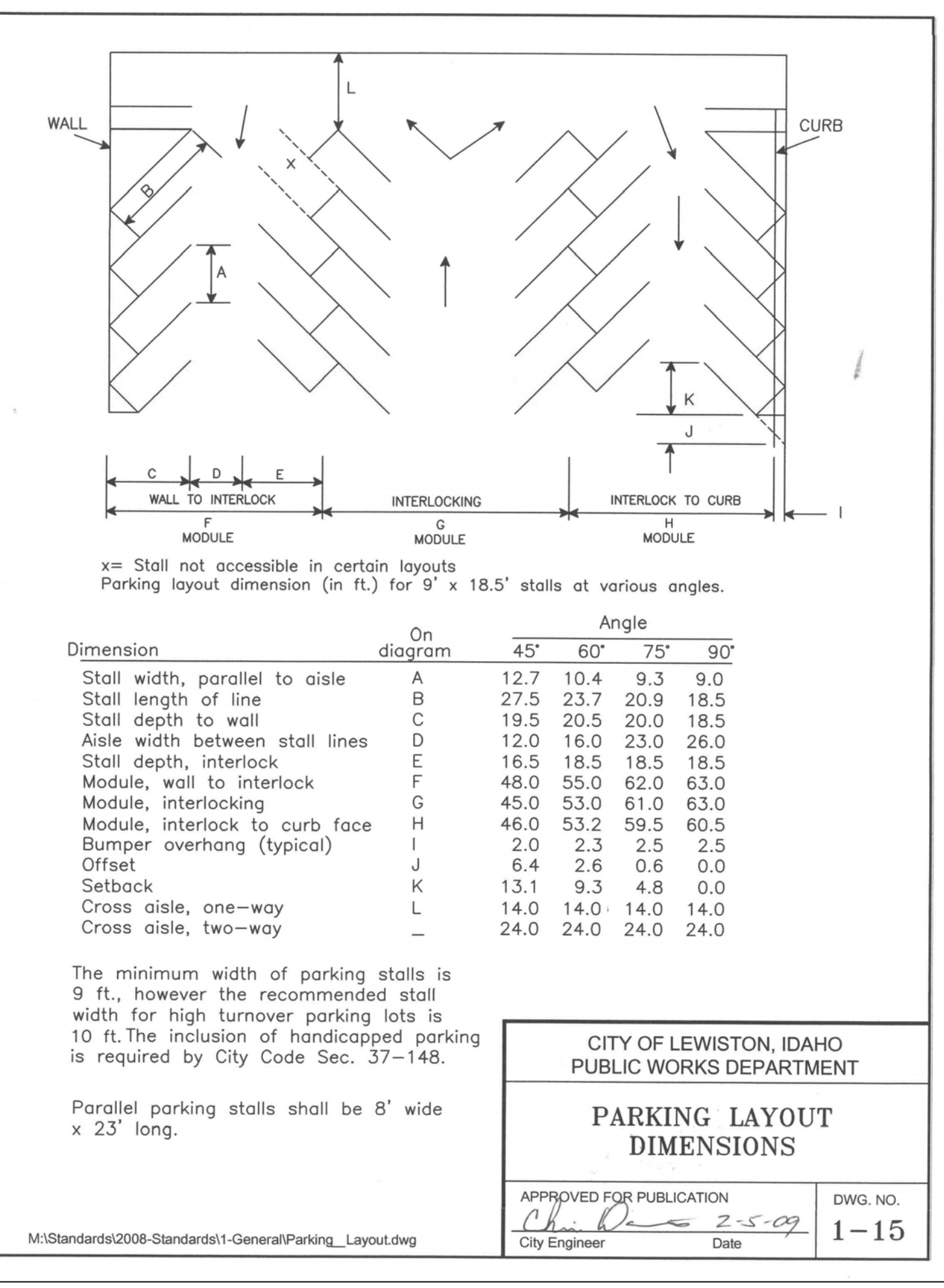
CITY OF LEWISTON, IDAHO
PUBLIC WORKS DEPARTMENT
CLEAR VISION AREA
APPROVED FOR PUBLICATION
City Engineer
Date
DWG. NO. 1-12



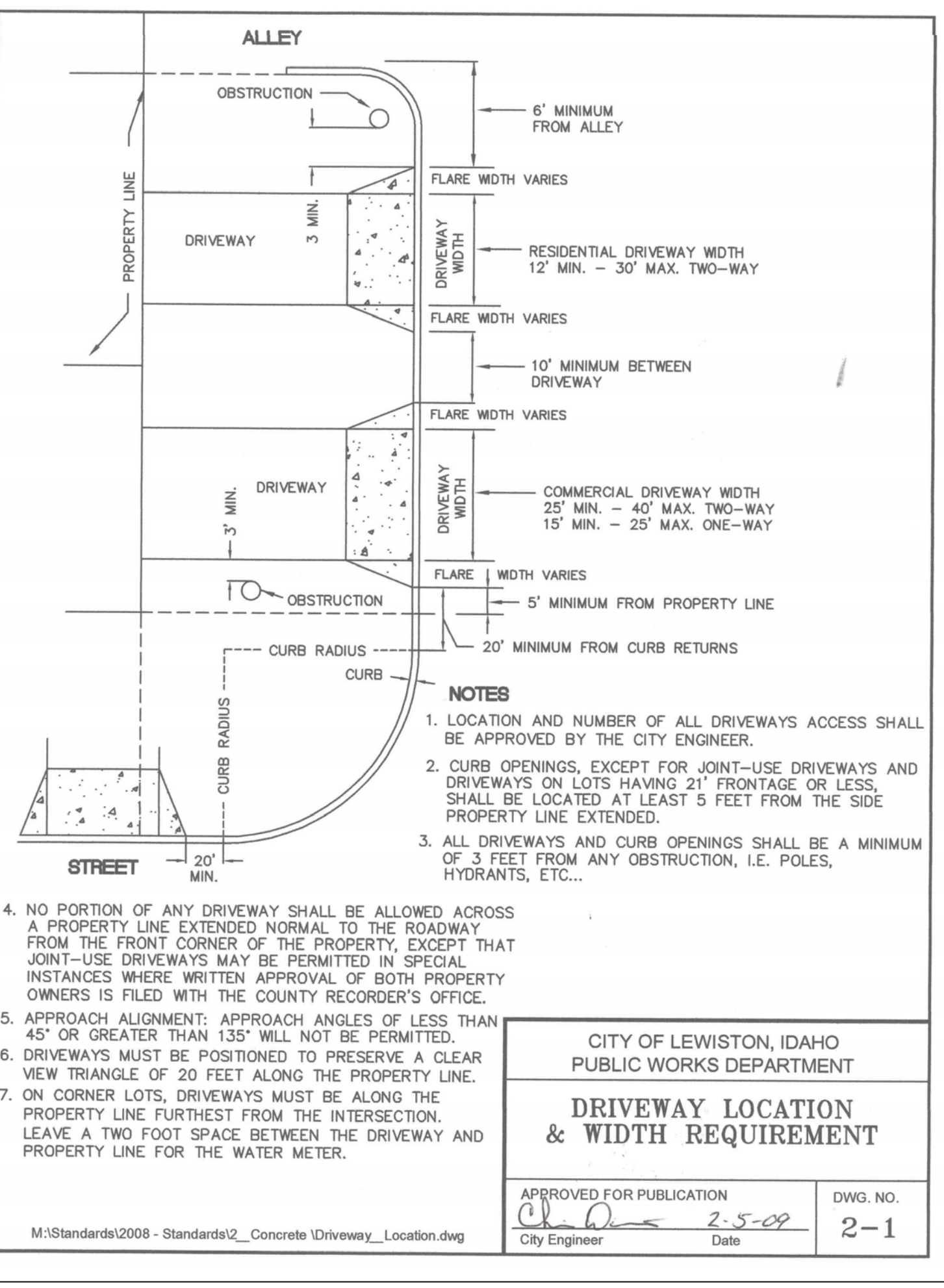
CITY OF LEWISTON, IDAHO
PUBLIC WORKS DEPARTMENT
DISABLED PARKING SIGN INSTALLATION
APPROVED FOR PUBLICATION
City Engineer
Date
DWG. NO. 1-13



CITY OF LEWISTON, IDAHO
PUBLIC WORKS DEPARTMENT
DISABLED PARKING STALLS
APPROVED FOR PUBLICATION
City Engineer
Date
DWG. NO. 1-14



CITY OF LEWISTON, IDAHO
PUBLIC WORKS DEPARTMENT
PARKING LAYOUT DIMENSIONS
APPROVED FOR PUBLICATION
City Engineer
Date
DWG. NO. 1-15



CITY OF LEWISTON, IDAHO
PUBLIC WORKS DEPARTMENT
DRIVEWAY LOCATION & WIDTH REQUIREMENT
APPROVED FOR PUBLICATION
City Engineer
Date
DWG. NO. 2-1

LOGOGRINZ RENOVATION PROJECT
STANDARD DETAILS
228-232 THAIN ROAD
LEWISTON, IDAHO

HEDCO
HAMMOND ENGINEERING & DEVELOPMENT CO.
528 BRYDEN AVENUE LEWISTON, IDAHO 83501
(208) 750-5422

REV. DATE	DESCRIPTION	CHECKED	APPR.

SCALE: D
DRAWN BY: MEE
DATE: 03-29-17
SHEET: C7
DRAWING #: 1702-C7

REGISTERED PROFESSIONAL ENGINEER AND SURVEYOR
#2102
STATE OF IDAHO
JAMES S. SHAMUS
8/17/17

PLAN

	MIN.	MAX.
A	1.6"	2.4"
B	.65"	1.5"
C	50% -65% OF BASE DIA.	
D	.9"	1.4"

SECTION VIEW

Notes:

- Detectable truncated-dome warning, 2 ft wide, must be provided for the full width of ramps and blended connections to mark the street edge and fully approved by current ADA requirements.
- At least one corner of the detectable warning panel shall be coincident to the back of curb

CITY OF LEWISTON, IDAHO
PUBLIC WORKS DEPARTMENT

DETECTABLE WARNING FOR PEDESTRIAN ACCESS

APPROVED FOR PUBLICATION
City Engineer *Cheryl R. Williams* Date *9/1/10* DWG. NO. **2-5**

M:\Standards\2010-Standards\2-Concrete\Detectable Dome.dwg

GENERAL NOTES FOR ALL TYPES OF CURB AND GUTTER

- SECURE A PERMIT FOR CONSTRUCTION, BEFORE BEGINNING CONSTRUCTION IN PUBLIC RIGHT-OF-WAY.
- GRADE, ALIGNMENT AND CURB TYPE SHALL BE AS APPROVED BY THE CITY ENGINEER.
- ALIGNMENT AND GRADE STAKED TO LIP OF GUTTER (LIP) SHALL BE ESTABLISHED OR APPROVED BY THE CITY ENGINEER.
- THE TOLERANCE FOR FINISHED CURB AND GUTTER - MAX. VARIATION OF SURFACE FLATNESS: 1/4" INCH IN 10 FEET MAX. VARIATION FROM TRUE POSITION (DESIGN GRADE): 1/2" INCH
- BASE MATERIAL SHALL BE 4" OF 3/4" INCH MINUS [CURRENT ITD SPEC 703.04] OR 5/8" INCH MINUS [CURRENT WDOT/M41-10 SPEC 9-03.9] CRUSHED AGGREGATE BASE MATERIAL COMPACTED TO 95% MAXIMUM DENSITY AS DETERMINED BY MODIFIED PROCTOR AS PER AASHTO T180. ALL FILL OR BACKFILL AREAS SHALL BE PLACED IN 6" TO 8" MAXIMUM LIFTS. IN AREAS OF SMALL PROJECTS, LIMITED HEAVY TRUCK TRAFFIC OR WHERE COMPACTION EQUIPMENT HAS LIMITED ACCESS A REDUCED % COMPACTION MAY BE ALLOWED WITH WRITTEN APPROVAL FROM PUBLIC WORKS DIRECTOR.
- CONCRETE SHALL BE 3,000 PSI MINIMUM AT 28 DAYS, MAXIMUM WATER/CEMENT RATIO SHALL BE 0.5 (LB/LB), 5" MAX. SLUMP, AIR CONTENT (%) 6.5 ±1.5.
- DUMMY JOINTS AT 10 FOOT INTERVALS AND AT CURB RADII, 3/4" TO 1" DEEP. CONSTRUCTION JOINTS LOCATIONS AS DIRECTED BY CITY ENGINEER. DIFFERENTIAL ELEVATION BETWEEN ADJACENT SECTIONS SHALL NOT EXCEED 1/4".
- THE CONTRACTOR ARE REQUIRED BY THE PUBLIC WORKS DEPARTMENT TO MARK STUB-OUTS AND VALVES IN THE UNCURED CONCRETE.
- THE CONTRACTOR OR OWNER SHALL NOTIFY THE PUBLIC WORKS DEPARTMENT FOR INSPECTION AFTER THE FORMS ARE SET AND THE PUBLIC WORKS DEPARTMENT SHALL BE NOTIFIED NO LESS THAN 2 WORKING DAYS BEFORE PLACEMENT OF CONCRETE FOR A FINAL INSPECTION. FAILURE TO NOTIFY THE PUBLIC WORKS DEPARTMENT IS GROUNDS FOR REJECTION OF CURB AND GUTTER.
- CONCRETE SURFACE TO HAVE A LIGHT BROOM FINISH PARALLEL WITH THE LENGTH OF THE CURB.
- APPLY UNIFORM COAT OF REZ-SEAL OR APPROVED EQUIVALENT CURING COMPOUND TO EXPOSED CONCRETE IMMEDIATELY AFTER FINISHING..
- ROLLED CURB AND GUTTER SHALL NOT BE USED:
 - ON STREETS IN COMMERCIAL AND INDUSTRIAL ZONED AREAS.
 - ON STREETS WITH LONGITUDINAL (LENGTHWISE) GRADES IN EXCESS OF 6%.
 - ON ANY ARTERIAL OR COLLECTOR.
 - WITHOUT PRIOR APPROVAL OF THE CITY ENGINEER.
 - WHEN SIDEWALK IS LOCATED AT THE BACK OF CURB.

CITY OF LEWISTON, IDAHO
PUBLIC WORKS DEPARTMENT

GENERAL NOTES FOR ALL TYPES OF CURB AND GUTTER

APPROVED FOR PUBLICATION
City Engineer *Cheryl R. Williams* Date *7/24/13* DWG. NO. **2-6**

M:\Standards\2010-Standards\2-Concrete\General_Notes_Concrete.dwg

HIGH BACK CURB & GUTTER

ROLLED CURB & GUTTER

ALL TOLERANCES ARE ±1/4" UNLESS OTHERWISE NOTED

CITY OF LEWISTON, IDAHO
PUBLIC WORKS DEPARTMENT

**HIGH BACK CURB & GUTTER
ROLLED CURB & GUTTER**

APPROVED FOR PUBLICATION
City Engineer *Cheryl R. Williams* Date *2-5-09* DWG. NO. **2-7**

M:\Standards\2008 - Standards\2_Concrete\HighBack_Rolled_Curb.dwg

CONCRETE SIDEWALK

GENERAL NOTES FOR ALL SIDEWALK:

- LINE AND GRADE STAKED T.S.; TOP OF SIDEWALK, B.S., BACK OF SIDEWALK.
- GRADE AND ALIGNMENT TO BE APPROVED BY THE CITY ENGINEER.
- THE TOLERANCE FOR FINISHED SIDEWALK - MAX. VARIATION OF SURFACE FLATNESS: 1/4" INCH IN 10 FEET MAX. VARIATION FROM TRUE POSITION (DESIGN GRADE): 1/2" INCH NO PONDING IS ALLOWED ON SIDEWALKS, STEPS OR PEDESTRIAN RAMPS.
- BASE MATERIAL SHALL BE 4" OF 3/4" INCH MINUS [CURRENT ITD SPEC 703.04] OR 5/8" INCH MINUS [CURRENT WDOT/M41-10 SPEC 9-03.9] CRUSHED AGGREGATE BASE MATERIAL COMPACTED TO 95% MAXIMUM DENSITY AS DETERMINED BY MODIFIED PROCTOR AS PER AASHTO T180. ALL FILLS OR BACKFILL AREAS SHALL BE PLACED IN 6" MAX. LIFTS.
- CONTRACTION/DUMMY JOINTS SHALL BE PLACED AT 5' INTERVALS, 3/4" TO 1" DEEP; INSTALL A PERFORMED EXPANSION JOINT FILLER TO THE FULL DEPTH & WIDTH EVERY 100 FEET.
- CONCRETE SHALL BE 3,000 PSI MIN. AT 28 DAYS, MAX. WATER/CEMENT RATIO SHALL BE 0.5 (LB/LB), 5" MAX. SLUMP, AIR CONTENT (%) 6.5 ±1.5.
- THE CONTRACTOR OR OWNER SHALL NOTIFY THE PUBLIC WORKS DEPT. FOR INSPECTION OF BASE MATERIAL AFTER FORMS ARE SET AND THE PUBLIC WORKS DEPT. WILL BE NOTIFIED NO LESS THAN 2 WORKING DAYS BEFORE PLACEMENT OF CONCRETE, FOR FINAL INSPECTION.
- CONCRETE SURFACE SHALL HAVE LIGHT BROOM FINISH PERPENDICULAR TO LENGTH OF S/W.
- APPLY UNIFORM COAT OF REZ-SEAL OR APPROVED EQUIVALENT CURING COMPOUND TO EXPOSED CONCRETE IMMEDIATELY AFTER FINISHING.
- NAME OF CONTRACTOR AND YEAR TO BE STAMPED AT EACH END OF WORK AND AT INTERVALS OF 300 FT.
- CONCRETE SURFACE SHALL BE FREE OF SURFACE BLEMISHES OR VOIDS GREATER THAN 1/4". JOINTS AND EDGES SHALL BE CLEAN AND FREE OF EXCESS SPALLING OR VOIDS.
- A 6" STRIP TO BE LOCATED BETWEEN RIGHT-OF-WAY LINE AND SIDEWALK FOR PLACEMENT OF PROPERTY PINS WHEN PLANTING STRIP OR RETENTION SWALES ARE PLACED BEHIND CURB AND GUTTER.

CITY OF LEWISTON, IDAHO
PUBLIC WORKS DEPARTMENT

CONCRETE SIDEWALK

APPROVED FOR PUBLICATION
City Engineer *Cheryl R. Williams* Date *8/27/15* DWG. NO. **2-8**

M:\Standards\2008 - Standards\2_Concrete\Concrete Sidewalk.dwg

DEPRESSED CURB SECTION AT DRIVEWAY ENTRANCES

DEPRESSED CURB SECTION AT SIDEWALK RAMPS

CITY OF LEWISTON, IDAHO
PUBLIC WORKS DEPARTMENT

DEPRESSED CURB SECTION

APPROVED FOR PUBLICATION
City Engineer *Cheryl R. Williams* Date *3-9-08* DWG. NO. **2-10**

M:\Standards\2008 - Standards\2_Concrete\Depressed Curb Section.dwg

RADIUS AT FACE OF CURB	E	F
20 FEET	10' - 4 3/4"	3' - 8 1/2"
25 FEET	9' - 8 1/4"	3' - 6"
30 FEET	8' - 11 1/2"	3' - 2 1/4"

SINGLE OR DOUBLE SIDEWALK RAMP TYPE 2

CITY OF LEWISTON, IDAHO
PUBLIC WORKS DEPARTMENT

SINGLE OR DOUBLE SIDEWALK RAMP TYPE 2

APPROVED FOR PUBLICATION
City Engineer *Cheryl R. Williams* Date *3/9/17* DWG. NO. **2-12**

M:\Standards\2010-Standards\2-Concrete\Jogged_Driveway.dwg

DRIVEWAY APPROACH JOGGED SIDEWALK

CITY OF LEWISTON, IDAHO
PUBLIC WORKS DEPARTMENT

DRIVEWAY APPROACH JOGGED SIDEWALK

APPROVED FOR PUBLICATION
City Engineer *Cheryl R. Williams* Date *7/24/13* DWG. NO. **2-18**

M:\Standards\2010-Standards\2-Concrete\Jogged_Driveway.dwg

REVISION CHECKED APPR. DATE DESCRIPTION

SCALE: SHEET SIZE: D

DRAWN BY: MEE
CHECKED BY: JSH
DATE: 03-29-17
JOB: 1702
SHEET: C8

CITY OF LEWISTON, IDAHO
PUBLIC WORKS DEPARTMENT

**LOGOGRINZ RENOVATION PROJECT
STANDARD DETAILS
228-232 THAIN ROAD
LEWISTON, IDAHO**

HEDCO
HAMMOND ENGINEERING & DEVELOPMENT CO.
528 BRYDEN AVENUE LEWISTON, IDAHO 83501
(208) 750-5424

SHEET **C8**