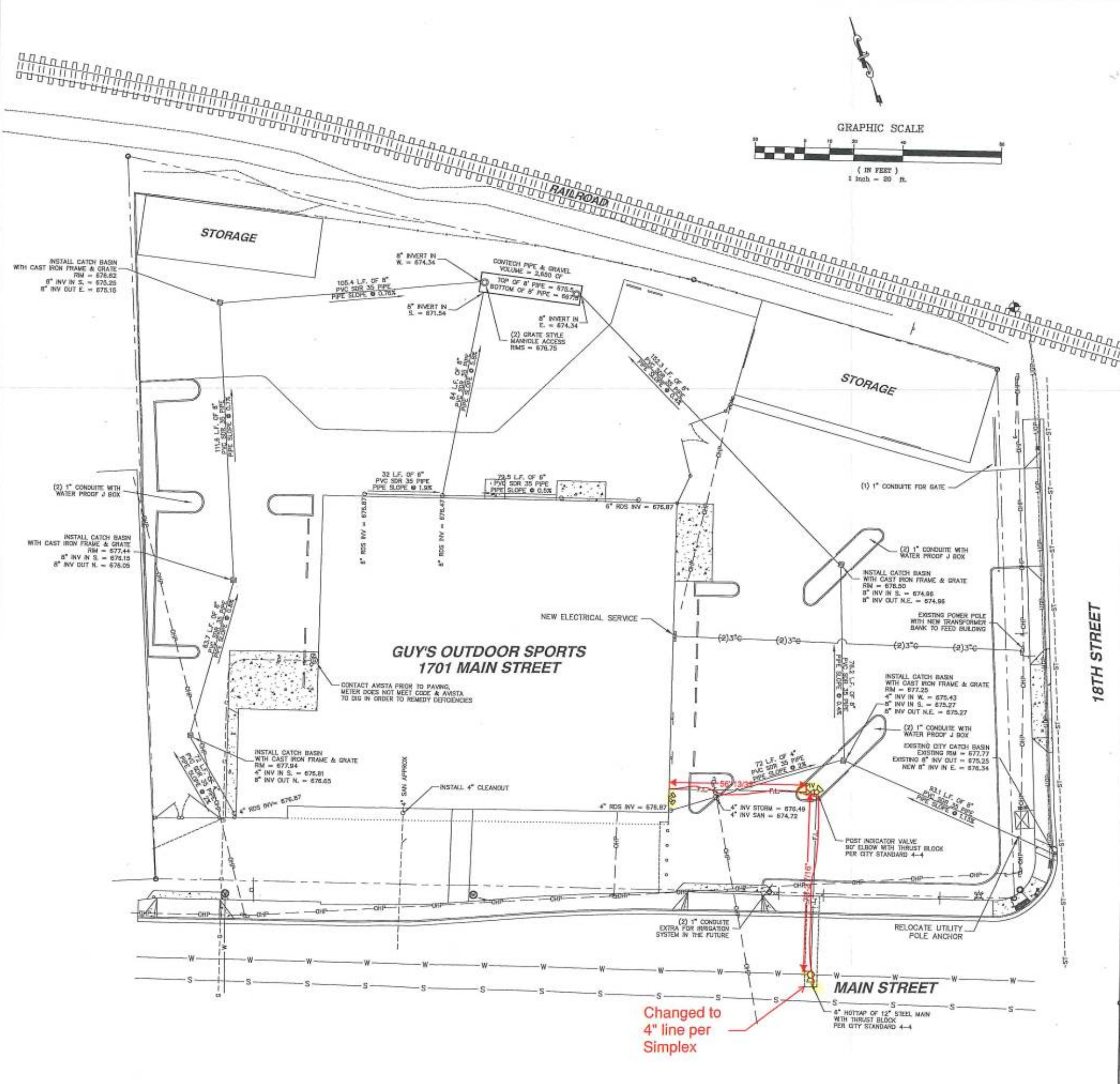


C6 UTILITY NOTES

- 1) SPRINKLER SYSTEM BY CONTRACTOR.
- 2) THE EXISTING UTILITY LOCATIONS SHOW WHERE DETERMINED BY COLLECTING EXISTING UTILITY DRAWINGS FROM VARIOUS UTILITY ENTITIES, CALLING IN A UTILITY LOCATE AND THEN MAPPING THE UTILITY LOCATES. THEREFOR, ANACLINE ENGINEERING PLLC DOES NOT WARRANTY THE ACCURACY OF THE INFORMATION PROVIDED AND PERFORMED BY OTHERS.

C6 CONDUIT SPECIFICATIONS

- 1) ALL CONDUIT IS 2" SCHEDULE 40 GRAY PVC
- 2) CONDUIT BENDS AND SWEEPS ARE 24"
- 3) MINIMUM SEPARATION DISTANCE TO WATER, STORM, SANITARY UTILITIES IS 2' FROM EDGE OF PIPE.
- 4) CONDUITS MAY BE PUT IN A COMMON TRENCH. CONDUIT ROUTES ARE DRAWN FOR CLARITY. CONTRACTOR SHALL ADJUST COMMON TRENCH LOCATION TO AVOID CONFLICTS WITH OTHER UTILITIES AND TO MAINTAIN MINIMUM SEPARATION REQUIREMENTS.



Changed to 4" line per Simplex

REVISIONS									
FILENAME		BY		DATE		NO.		D	0
<p>ANACLINE ENGINEERING & DRAFTING "an affordable alternative"</p> <p>4025 DALE COURT LEWISTON, IDAHO 83501 TEL (208) 750-1982 (208) 751-4665</p>									
<p>GUY'S OUTDOOR SPORTS 1701 MAIN STREET LEWISTON IDAHO 83501</p> <p style="text-align: right;">UTILITY PLAN</p>									
DRAWN BY: CRF	CHECKED BY: CRF								
DESIGNED BY: CRF									
SCALE: 1" = 20'									
DATE: 4-20-17									
PROJECT NO: 00532									
SHEET 6 OF 10									