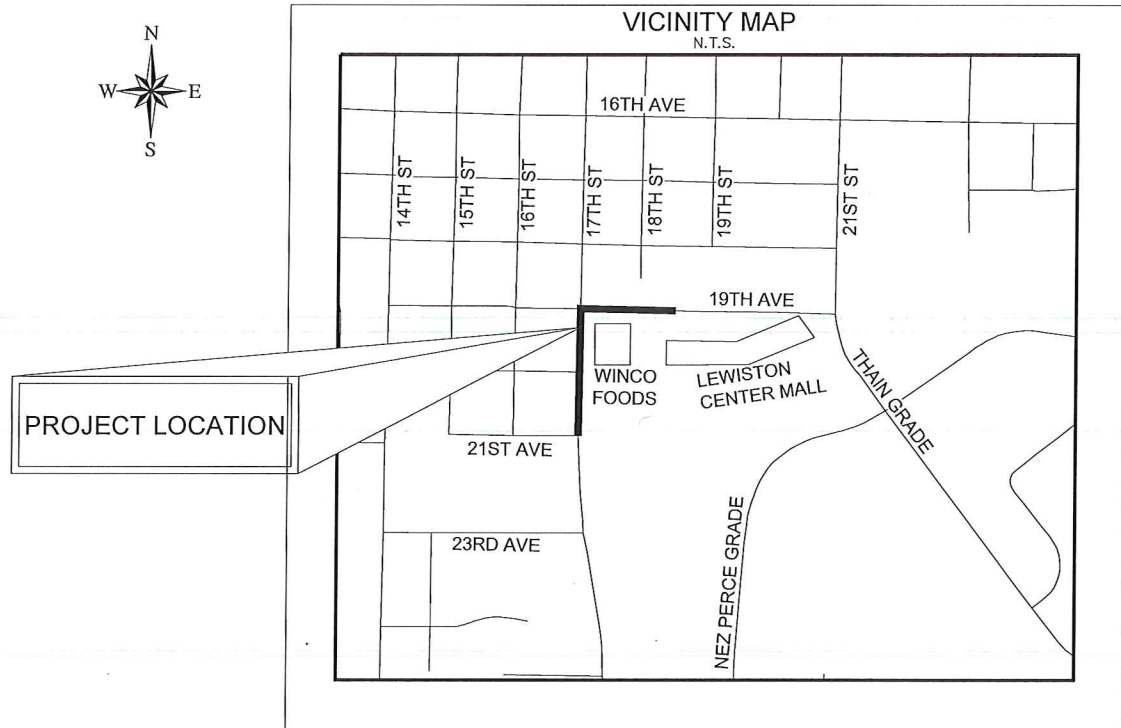


Sheet List Table	
Sheet Number	Sheet Title
1	COVER SHEET
2	PROJECT LAYOUT PLAN
3	DETAILS
4	19TH AVE STA 1+00 - 3+00
5	19TH AVE STA 3+00 - 5+50
6	19TH AVE STA 5+50 - 8+00
7	19TH AVE STA 8+00 - END
8	17TH ST WEST STA 20+00 - 22+50
9	17TH ST WEST STA 22+50 - 25+00
10	17TH ST WEST STA 25+00 - 27+50
11	17TH ST EAST
12	STRIPING & PAVEMENT MARKING PLAN
13	TRAFFIC CONTROL PLAN

CITY OF LEWISTON 19TH AVE & 17TH ST IMPROVEMENT PROJECT CONSTRUCTION PLANS

October 2017

OWNER:
CITY OF LEWISTON
C/O SHAWN STUBBERS, P.E.
207 D ST, SUITE B
LEWISTON, ID
208-790-8812



LEGEND		
EXISTING	PROPOSED	DESCRIPTION
		CURB & GUTTER
		DITCH
		EDGE OF GRAVEL
		EDGE OF PAVEMENT
		GRADE BREAK
		FENCE (BARBED WIRE)
		CABLE TV
		GAS LINE
		POWER LINE (UNDERGROUND)
		SANITARY SEWER PIPE
		STORM DRAIN PIPE
		TELEPHONE LINE
		WATER PIPE
		ROAD CENTERLINE
		ROAD RIGHTS-OF-WAY
		BUILDINGS
		DECIDUOUS TREE
		ROAD SIGN
		CATCH BASIN
		MANHOLE
		POWER POLE
		POWER POLE ANCHOR
		POWER TRANSFORMER
		TELEPHONE RISER
		UTILITY JUNCTION BOX
		VALVE
		WATER SERVICE & METER BOX
		BRASS CAP

ABBREVIATIONS TABLE

A.C.	ASPHALTIC CONCRETE	FL	FLOW LINE	PRC	POINT OF REVERSE CURVE
AI	AIR INJECTION ASSEMBLY	F.O.	FIBER OPTIC	PT	POINT OF TANGENCY
ALC	ALUMINUM CAP	GA.	GAUGE	PUE	PUBLIC UTILITIES EASEMENT
AR	AIR RELEASE VALVE	GB	GRADE BREAK	PVC	POLYVINYL CHLORIDE
ASPH	ASPHALT	GND	GROUND	PVMT	PAVEMENT
AVE.	AVENUE	G.V.	GATE VALVE	RT.	RIGHT
B.C.	BRASS CAP	HORIZ.	HORIZONTAL	R.	RADIUS
BL	BASELINE	HYD	FIRE HYDRANT	R&P	RETAIN AND PROTECT
BLDG.	BUILDING	I.D.	INSIDE DIAMETER	R/W	RIGHT OF WAY
B.M.	BENCHMARK	in.	INCH	REF.	REFERENCE
BO	BLOW OFF ASSEMBLY	INV.	INVERT ELEVATION	RP	RADIUS POINT
BRG.	BEARING	I.P.	IRON PIN	S	SOUTH
CB	CATCH BASIN	IRR	IRRIGATION	SCH	SCHEDULE
CL	CENTERLINE	IS	IRRIGATION SERVICE	SD	STORM DRAIN
CMP	CORRUGATED METAL PIPE	ISPWC	IDAHO STANDARDS FOR PUBLIC WORKS CONSTRUCTION	SE	SOUTHEAST
CO	CLEAN OUT	LF	LINEAR FEET	SEC	SECTION
CONC.	CONCRETE	LOG	LIP OF GUTTER	SPEC.	SPECIFICATION
CTR	CENTER	LT.	LEFT	SS	SANITARY SEWER
CULV.	CULVERT	MAX.	MAXIMUM	ST.	STREET
CY	CUBIC YARD	MH	MANHOLE	STA:	STATION
D.I.	DUCTILE IRON	MIN.	MINIMUM	SW	SOUTHWEST
DIA.	DIAMETER	MISC.	MISCELLANEOUS	TA	TOP OF ASPHALTIC CONCRETE
DIST.	DISTANCE	N	NORTH/NORTHING	TBC	TOP BACK OF CURB
DR.	DRIVE	N/A	NOT APPLICABLE	TC	TOP OF CONCRETE
DWG	DRAWING	NE	NORTHEAST	TYP.	TYPICAL
E	EAST/EASTING	N.T.S.	NOT TO SCALE	VC	VERTICAL CURVE
EA	EACH	NW	NORTHWEST	VPC	VERTICAL POINT OF CURVATURE
EL.	ELEVATION	PC	POINT OF CURVATURE	VPI	VERTICAL POINT OF INTERSECTION
EMB.	EMBANKMENT	PI	POINT OF INTERSECTION	VPT	VERTICAL POINT OF TANGENCY
EXC.	EXCAVATION	P.I.	PRESSURE IRRIGATION	W	WEST
EXIST.	EXISTING	PL	PROPERTY LINE	WM	WATER METER
FFC	FRONT FACE OF CURB	POB	POINT OF BEGINNING		
FG	FINISHED GRADE	POC	POINT ON CURVE		

RIEDELSEL
Engineering

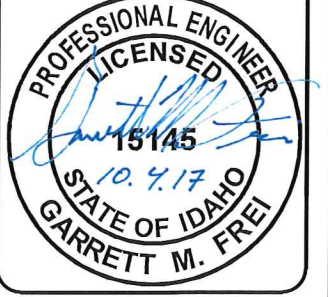
77 Southway, Suite C
Lewiston, Id. 83501
Phone: (208) 743-3818
Fax: (208) 743-3819

THIS DOCUMENT, AND THE IDEAS AND DESIGNS INCORPORATED HEREIN, AS AN INSTRUMENT OF PROFESSIONAL SERVICES, IS THE PROPERTY OF RIEDELSEL ENGINEERING, INC. AND IS NOT TO BE USED, IN WHOLE OR IN PART, FOR ANY OTHER PROJECT, OR THE EXTENSION OF THIS PROJECT WITHOUT THE WRITTEN AUTHORIZATION OF RIEDELSEL ENGINEERING, INC.

CITY OF LEWISTON 19TH AVE & 17TH ST IMPROVEMENT PROJECT CONSTRUCTION PLANS		COVER SHEET	
NO.	DATE	BY	DESCRIPTION



DESIGNED	
BY	
DESIGN CHECKED	
GMF	
DETAILED	
BY	
DRAWING CHECKED	
GMF	
FILE NAME	2595 - CVR-049
DRAWING DATE	9/8/17
AS SHOWN	
SHEET	1 OF 13

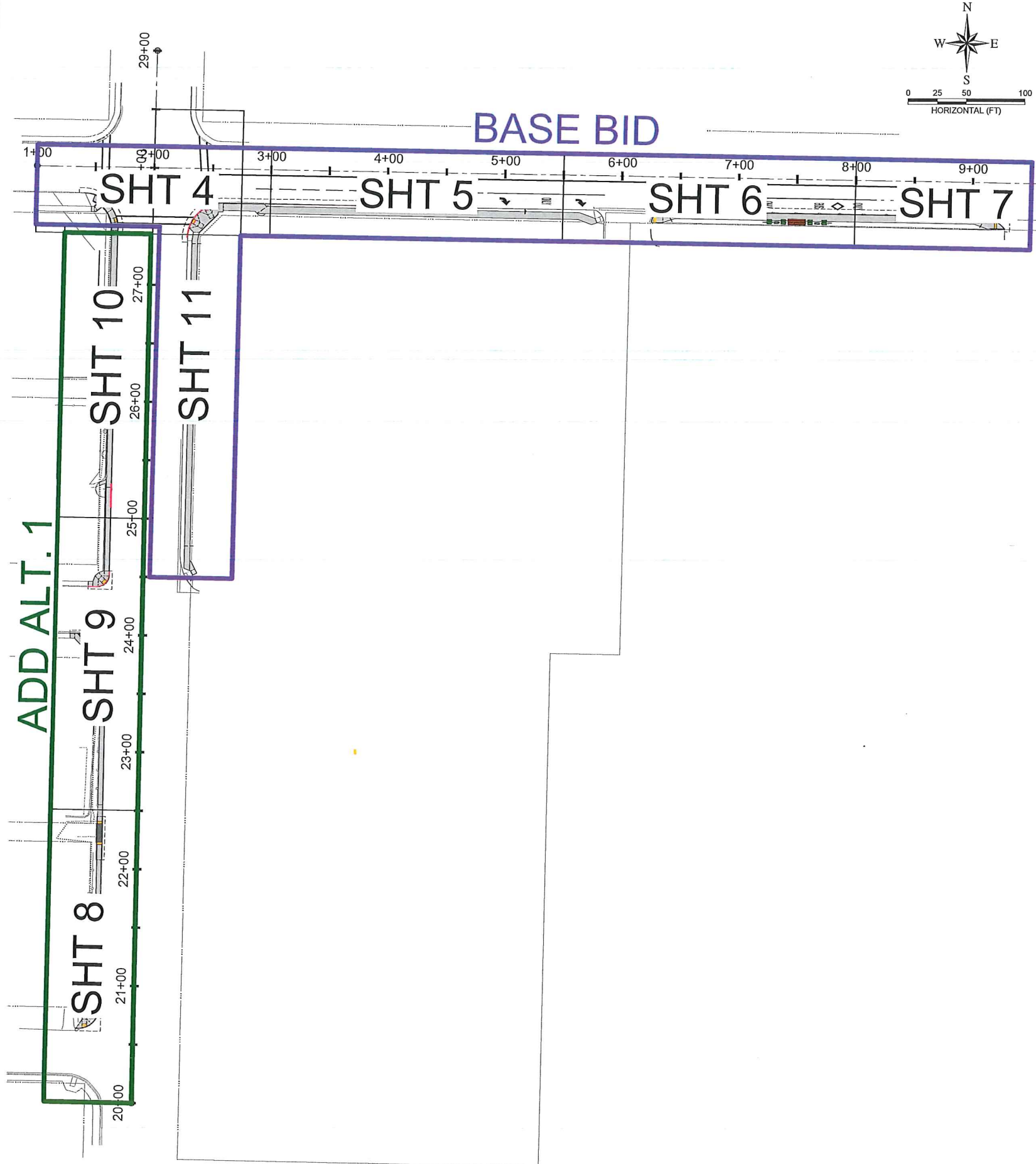


Record Drawing 10/12/2020

PLOT DATE: 10/5/2017
E:\PROJECTS\2595 LEWISTON 19TH AVE 17TH ST\CADD\CIVIL 3D\DRAWINGS\2595 - CVR.DWG

GENERAL NOTES

1. THE ENGINEER REQUIRES INSPECTION REPORTS AND TEST RESULTS TO APPROVE OR DISAPPROVE ANY OF THE MATERIALS THAT ARE TO BE USED IN THE CONSTRUCTION OF THE IMPROVEMENTS. IT SHALL BE THE RESPONSIBILITY OF THE CONTRACTOR TO REQUEST AND SCHEDULE ALL REQUIRED SURVEYING, INSPECTIONS AND TESTS IN ACCORDANCE WITH THE SUPPLIED CONTRACT DOCUMENTS AND ISPWC (CURRENT EDITION). 48 HOUR MINIMUM NOTICE REQUIRED.
2. APPROXIMATE LOCATIONS OF KNOWN EXISTING UNDERGROUND UTILITIES ARE SHOWN HEREON. IT SHALL BE THE CONTRACTOR'S RESPONSIBILITY TO CONTACT THE APPROPRIATE UTILITY COMPANY, DETERMINE EXACT LOCATIONS OF ALL EXISTING UTILITIES PRIOR TO BEGINNING WORK. THE CONTRACTOR SHALL BE RESPONSIBLE FOR DAMAGES TO EXISTING UTILITIES, AND SHALL REPAIR DAMAGES IN ACCORDANCE WITH UTILITY OWNER'S REQUIREMENTS AT NO ADDITIONAL COST TO THE PROJECT OWNER. CALL UTILITY PROTECTION SERVICES OF IDAHO (DIGLINE) AT 811.
3. ALL BORROW AND FILL MATERIALS SHALL BE APPROVED BEFORE PLACEMENT.
4. THE CONTRACTOR SHALL BE RESPONSIBLE FOR PROTECTION OF ALL LAND SURVEY MONUMENTS. MONUMENTS DESTROYED OR DISTURBED BY THE CONTRACTOR WILL BE REPLACED BY A LICENSED SURVEYOR AT THE CONTRACTOR'S EXPENSE.
5. ALL CONSTRUCTION WORK SHALL BE DONE IN ACCORDANCE WITH CITY OF LEWISTON STANDARDS, CONTRACT DOCUMENTS AND THE CURRENT VERSION OF THE IDAHO STANDARDS FOR PUBLIC WORKS CONSTRUCTION (ISPWC).
4. THE CONTRACTOR SHALL TAKE ALL PRECAUTIONARY MEASURES TO ENSURE THE SAFETY OF THE PUBLIC DURING ALL CONSTRUCTION PERIODS AND THROUGHOUT THE CONSTRUCTION ZONES THIS SHALL BE REFLECTED IN THE TRAFFIC CONTROL PLAN AND PEDESTRIAN PLAN.
5. THE CONTRACTOR SHALL HAVE A COPY OF THE LATEST VERSION OF THE IDAHO STANDARDS FOR PUBLIC WORKS CONSTRUCTION (ISPWC) ON SITE AT ALL TIMES DURING CONSTRUCTION. FAILURE TO HAVE A CURRENT COPY OF THE STANDARD SPECIFICATIONS ON SITE COULD BE GROUNDS FOR A STOP WORK ORDER UNTIL THE SITUATION IS RESOLVED.
6. THE CONTRACTOR SHALL HAVE PLANS STAMPED "APPROVED FOR CONSTRUCTION" BY CITY OF LEWISTON PUBLIC WORKS DEPARTMENT ON SITE AT ALL TIMES.
7. ALL CONTRACTORS, SUBCONTRACTORS AND UTILITY CONTRACTORS SHALL ATTEND A PRE-CONSTRUCTION CONFERENCE PRIOR TO START OF WORK.
8. CONTRACTORS SHALL NOTIFY THE APPROPRIATE AGENCY WHEN MATERIALS ARE ON SITE OR WHEN INSPECTION OF THE WORK IS REQUIRED. NO WORK MAY BEGIN ON ANY PROJECT WITHOUT TWENTY FOUR (24) HOUR PRIOR NOTICE.
9. ALL MATERIAL FURNISHED ON, OR FOR THE PROJECT MUST MEET THE MINIMUM REQUIREMENTS OF THE APPROVING AGENCIES. AT THE REQUEST OF THE APPROVING AGENCY OR THE DESIGN ENGINEER, CONTRACTORS SHALL FURNISH PROOF THAT ALL MATERIALS INSTALLED ON THIS PROJECT MEET THE SPECIFICATION REQUIREMENTS.
10. WORK SUBJECT TO APPROVAL BY ANY GOVERNMENTAL AGENCY MUST BE APPROVED PRIOR TO (A) BACKFILLING TRENCHES FOR PIPE; (B) PLACING OF AGGREGATE BASE; (C) PLACING OF CONCRETE; (D) PLACING OF ASPHALT PAVING; (E) PLACING OF RETAINING WALLS.
11. INSPECTION, APPROVAL AND FINAL ACCEPTANCE OF ALL CONSTRUCTION SHALL BE BY THE PUBLIC WORKS DEPARTMENT, AND THEIR DECISION SHALL BE FINAL. SUCH INSPECTIONS SHALL NOT RELIEVE THE CONTRACTOR FROM THE RESPONSIBILITY OF PERFORMING THE WORK IN AN ACCEPTABLE MANNER IN ACCORDANCE WITH THE CITY OF LEWISTON APPROVED CONSTRUCTION PLANS.
12. THE CONTRACTOR SHALL BE RESPONSIBLE FOR EROSION AND SEDIMENT CONTROL PLAN (ESCP) AND THE SPILL PREVENTION AND CONTROL PLAN.
13. NO PARKING, STAGING, STORING EQUIPMENT VEHICLES, OR MATERIALS ON PRIVATE PROPERTY WITHOUT PRIOR WRITTEN APPROVAL OF THE LAND OWNER AND CITY.
14. RETAIN AND PROTECT ALL LANDSCAPING UNLESS OTHERWISE NOTED.



RIEDELSEL
Engineering

77 Southway, Suite C
Lewiston, Id. 83501
Phone: (208) 743-3818
Fax: (208) 743-3819

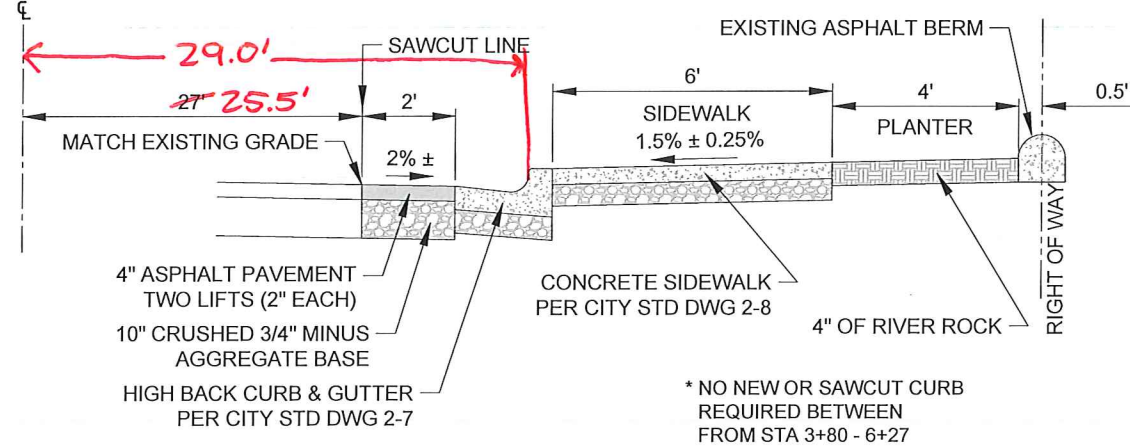
THIS DOCUMENT, AND THE IDEAS AND DESIGNS INCORPORATED HEREIN, AS AN INSTRUMENT OF PROFESSIONAL SERVICES, IS THE PROPERTY OF RIEDELSEL ENGINEERING, INC. AND IS NOT TO BE USED, IN WHOLE OR IN PART, FOR ANY OTHER PROJECT, OR THE EXTENSION OF THIS PROJECT WITHOUT THE WRITTEN AUTHORIZATION OF RIEDELSEL ENGINEERING, INC.

CITY OF LEWISTON 19TH AVE & 17TH ST
IMPROVEMENT PROJECT
CONSTRUCTION PLANS
2017

PROJECT LAYOUT PLAN

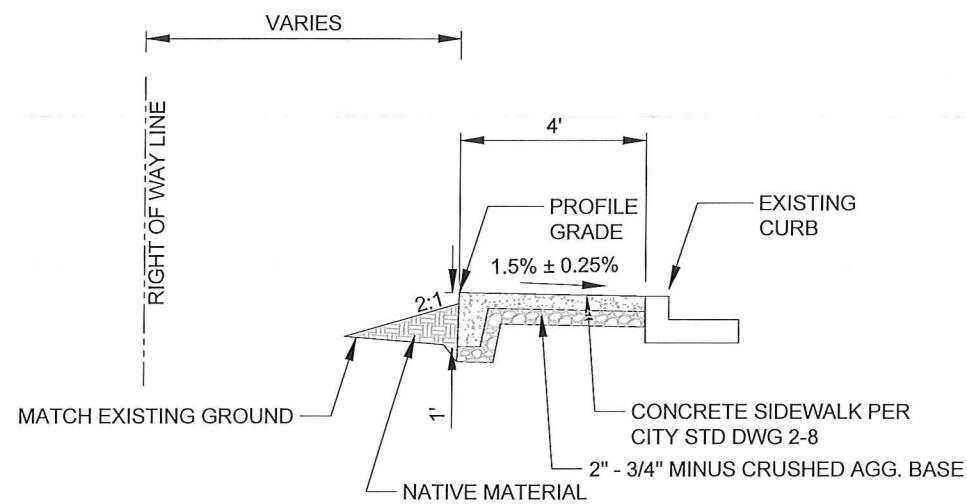
DESIGNED		DESIGN CHECKED		DETAILED		DRAWING CHECKED	
NO.	DATE	BY	DATE	BY	DATE	BY	DATE
1							
2							
3							
4							
5							
6							
7							
8							
9							
10							
11							
12							
13							
14							

PROFESSIONAL ENGINEER
LICENSED
15145
10.4.17
STATE OF IDAHO
GARRETT M. FREI

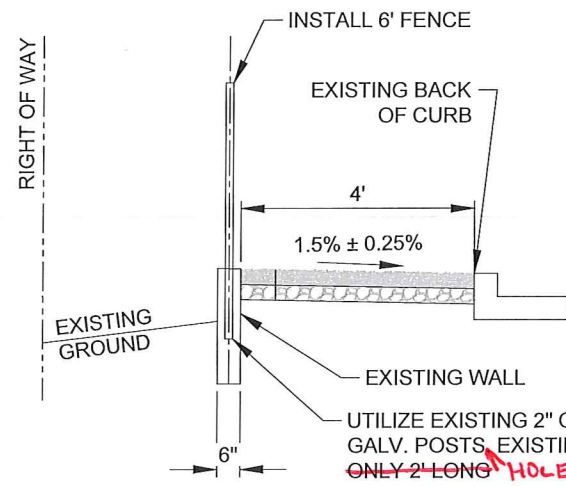


19TH AVE TYPICAL
SCALE: N.T.S.

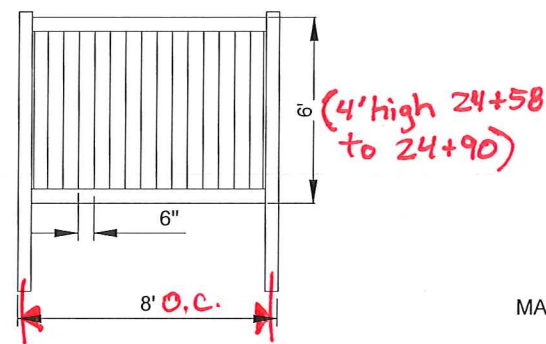
* NO NEW OR SAWCUT CURB REQUIRED BETWEEN FROM STA 3+80 - 6+27



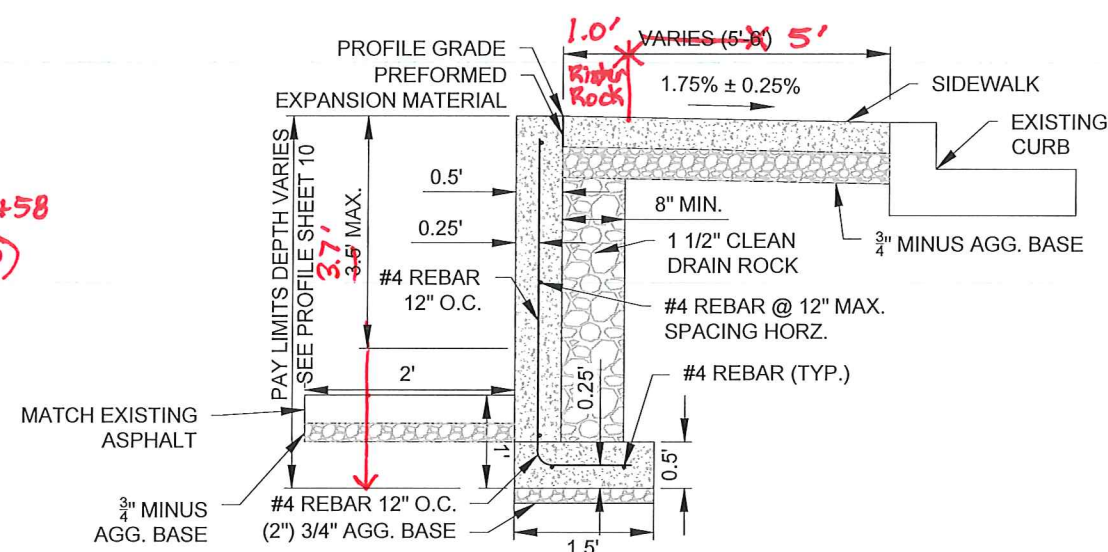
17TH ST THICKENED EDGE SIDEWALK TYPICAL
STA 21+70.00 - 23+50.00
SCALE: N.T.S.



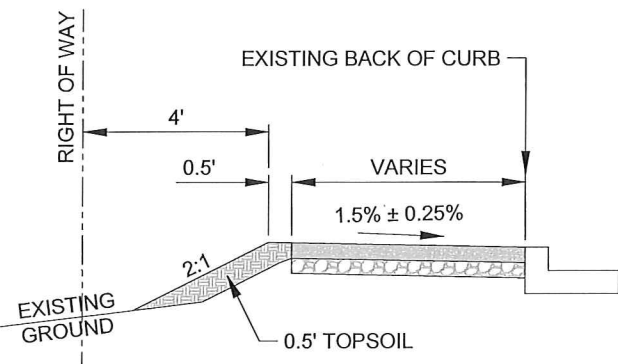
17TH ST RETAINING WALL TYPICAL
STA 24+54.64 - 25+29.15
SCALE: N.T.S.



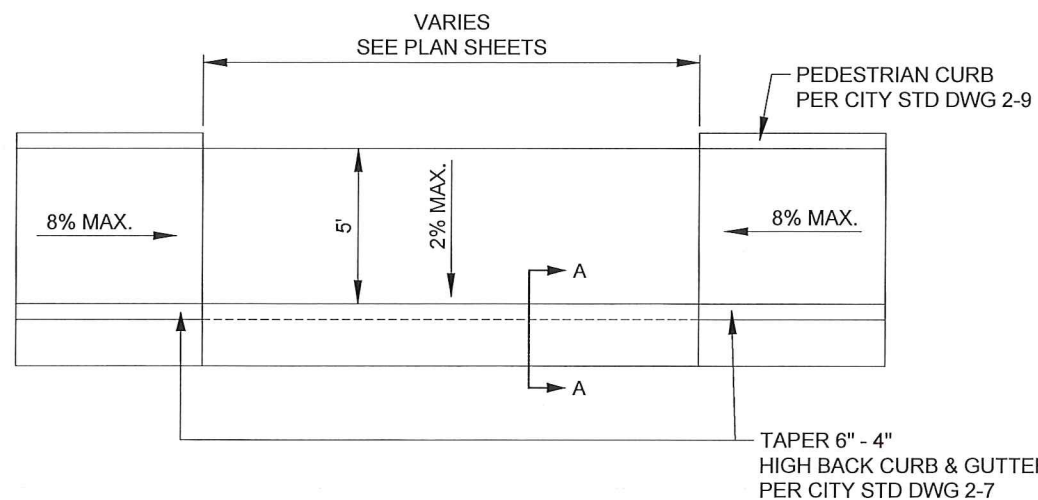
17TH ST PVC PRIVACY FENCE TYPICAL
STA 24+54.64 - 25+29.15
SCALE: N.T.S.



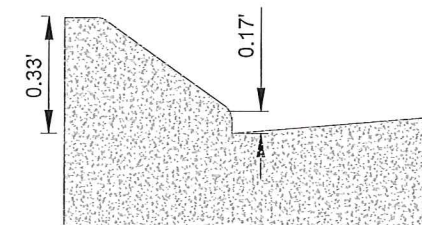
17TH ST RETAINING WALL TYPICAL
STA 26+19.25 - 26+78.62
SCALE: N.T.S.



17TH ST SIDEWALK TYPICAL
SCALE: N.T.S.



APPROACH DETAIL
SCALE: N.T.S.



DETAIL A-A
SCALE: N.T.S.

RIEDEL
Engineering

77 Southway, Suite C
Lewiston, Id. 83501
Phone: (208) 743-3818
Fax: (208) 743-3819

THIS DOCUMENT, AND THE IDEAS AND DESIGNS INCORPORATED HEREIN, AS AN INSTRUMENT OF PROFESSIONAL SERVICES, IS THE PROPERTY OF RIEDEL ENGINEERING, INC. AND IS NOT TO BE USED, IN WHOLE OR IN PART, FOR ANY OTHER PROJECT, OR THE EXTENSION OF THIS PROJECT WITHOUT THE WRITTEN AUTHORIZATION OF RIEDEL ENGINEERING, INC.

CITY OF LEWISTON 19TH AVE & 17TH ST
IMPROVEMENT PROJECT
CONSTRUCTION PLANS
2017

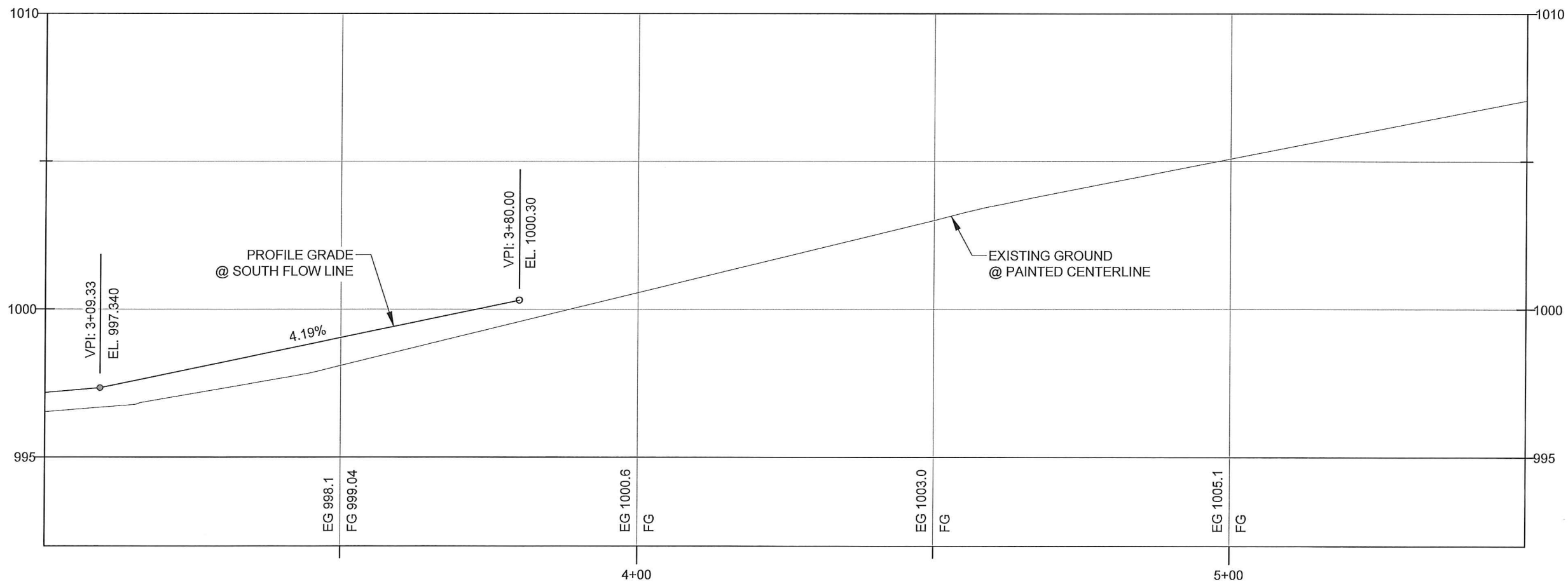
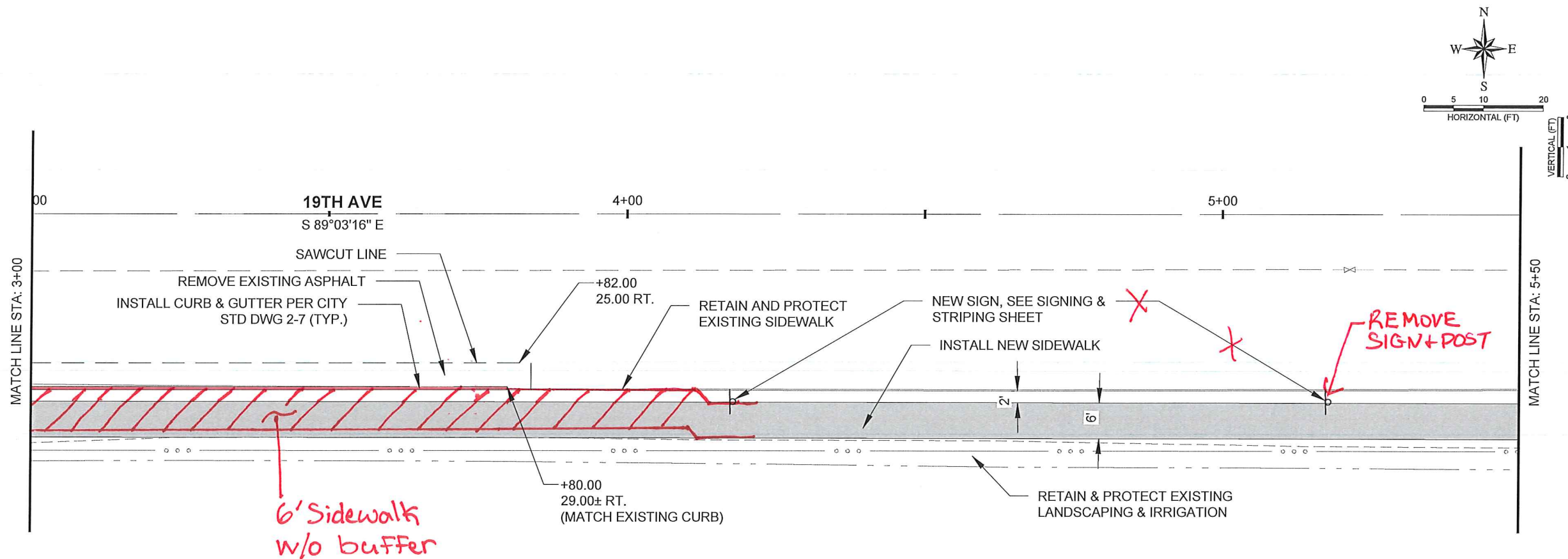
DETAILS		REVISIONS	
NO.	DATE	BY	DESCRIPTION
1			
2			
3			
4			
5			
6			
7			
8			
9			
10			

DESIGNED	DESIGN CHECKED	DETAILED	DRAWING CHECKED	FILE NAME	DRAWING DATE	DRAWING SCALE	SHEET
B/W	GMF	B/W	GMF	2895 - DTL.dwg	9/20/17	AS SHOWN	3 OF 13

PROFESSIONAL ENGINEER
LICENSED
15145
10.4.17
STATE OF IDAHO
GARRETT M. FREI

PLOT DATE: 10/5/2017
E:\PROJECTS\2895 LEWISTON\19TH AVE 17TH ST\CADD\CIVIL_3D\DRAWINGS\2895 - DTL.DWG

PLOT DATE: 10/5/2017
 E:\PROJECTS\2585 LEWISTON 19TH AVE 17TH ST\CADD\CIVIL 3D\DRAWINGS\2585 - 19TH PLAN.DWG



19TH AVE CENTERLINE PROFILE STA: 3+00 - 5+50

RIEDELSE
 Engineering

77 Southway, Suite C
 Lewiston, Id. 83501
 Phone: (208) 743-3818
 Fax: (208) 743-3819

THIS DOCUMENT, AND THE IDEAS AND DESIGNS INCORPORATED HEREIN, AS AN INSTRUMENT OF PROFESSIONAL SERVICES, IS THE PROPERTY OF RIEDELSE ENGINEERING, INC. AND IS NOT TO BE USED, IN WHOLE OR IN PART, FOR ANY OTHER PROJECT, OR THE EXTENSION OF THIS PROJECT WITHOUT THE WRITTEN AUTHORIZATION OF RIEDELSE ENGINEERING, INC.

CITY OF LEWISTON 19TH AVE & 17TH ST
 IMPROVEMENT PROJECT
 CONSTRUCTION PLANS
 2017

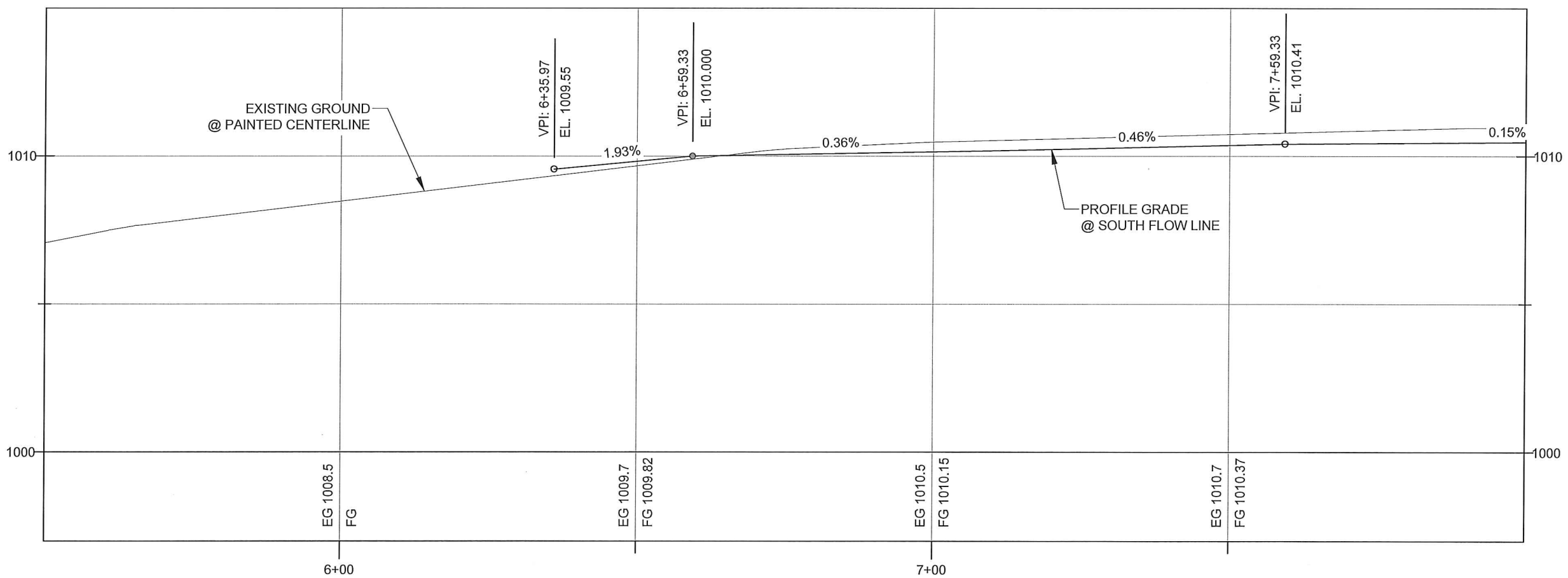
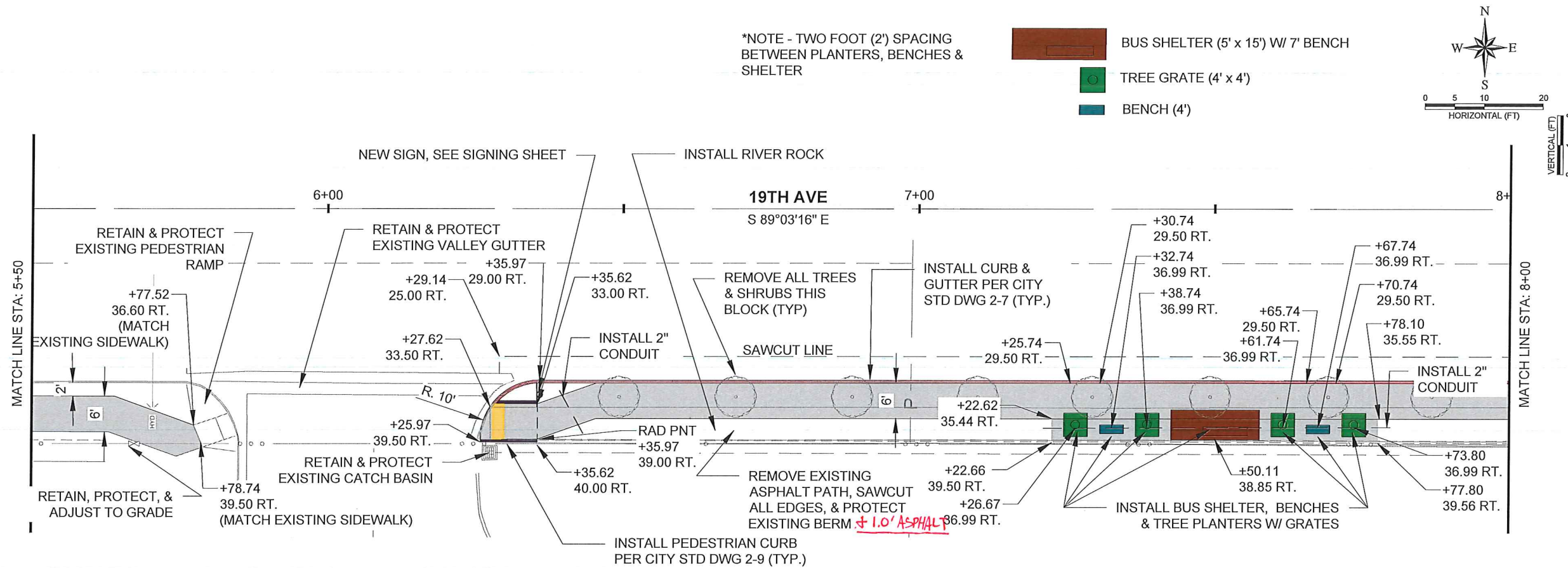
19TH AVE STA. 3+00 - 5+50

NO.	DATE	BY	DESCRIPTION
1			
2			
3			
4			
5			

DESIGNED	BJW
DESIGN CHECKED	GMF
DETAILED	BJW
DRAWING CHECKED	GMF
FILE NAME	2585 - 19TH PLAN.dwg
DRAWING DATE	9/8/17
DRAWING SCALE	AS SHOWN
SHEET	5 OF 13

PROFESSIONAL ENGINEER
 LICENSED
 15145
 10.4.17
 STATE OF IDAHO
 GARRETT M. FREI

PLOT DATE: 10/9/2017
 E:\PROJECTS\2595 LEWISTON 19TH AVE 17TH ST\CADD\CIVIL 3D\DRAWINGS\2595 - 19TH PLAN.DWG



19TH AVE CENTERLINE PROFILE STA: 5+50 - 8+00

RIEDELSE
 Engineering

77 Southway, Suite C
 Lewiston, Id. 83501
 Phone: (208) 743-3818
 Fax: (208) 743-3819

THIS DOCUMENT, AND THE IDEAS AND DESIGNS INCORPORATED HEREIN, AS AN INSTRUMENT OF PROFESSIONAL SERVICES, IS THE PROPERTY OF RIEDELSE ENGINEERING, INC. AND IS NOT TO BE USED, IN WHOLE OR IN PART, FOR ANY OTHER PROJECT, OR THE EXTENSION OF THIS PROJECT WITHOUT THE WRITTEN AUTHORIZATION OF RIEDELSE ENGINEERING, INC.

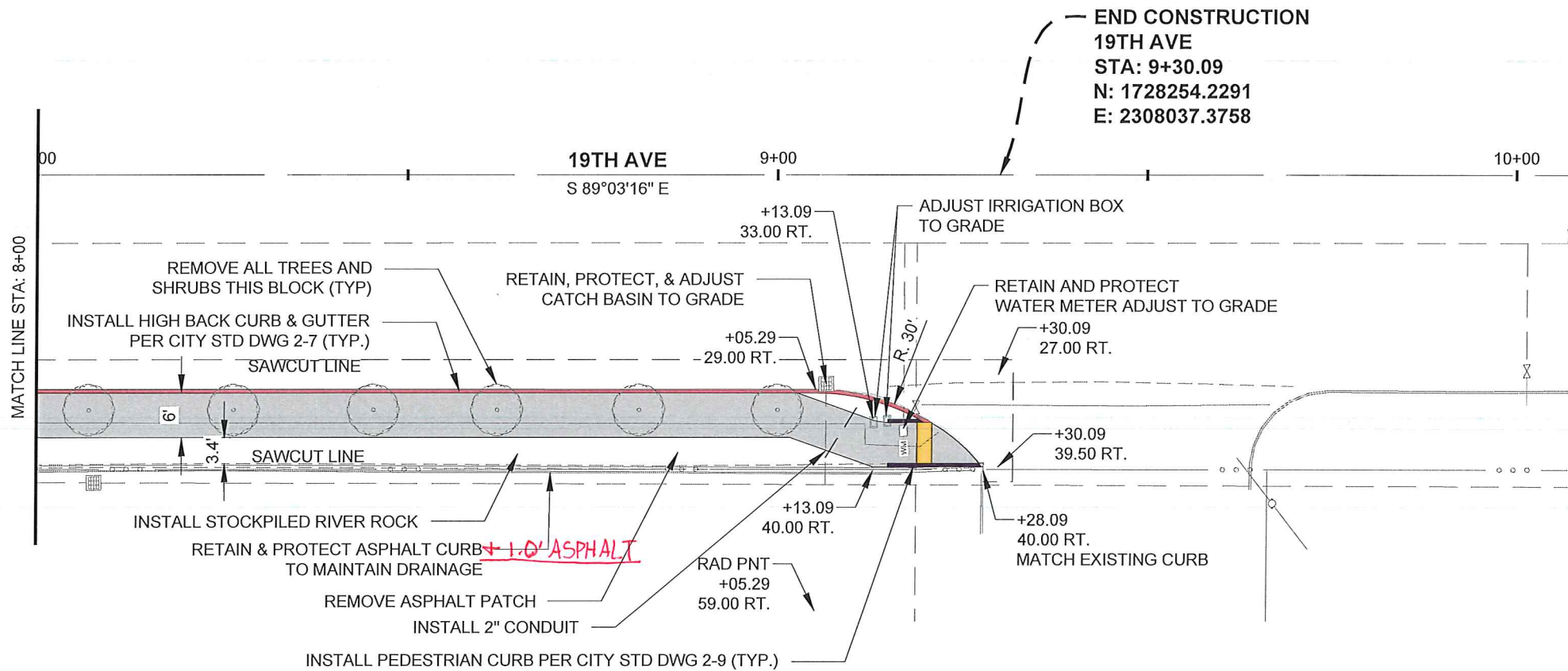
CITY OF LEWISTON 19TH AVE & 17TH ST
 IMPROVEMENT PROJECT
 CONSTRUCTION PLANS
 2017

DESIGNED		DESIGN CHECKED		DETAILED		DRAWING CHECKED		FILE NAME		DRAWING DATE		DRAWING SCALE		AS SHOWN		SHEET	
NO.	DATE	BY	DESCRIPTION	NO.	DATE	BY	DESCRIPTION	NO.	DATE	BY	DESCRIPTION	NO.	DATE	BY	DESCRIPTION	NO.	DATE
1				1				1				1				1	
2				2				2				2				2	
3				3				3				3				3	
4				4				4				4				4	
5				5				5				5				5	
6				6				6				6				6	

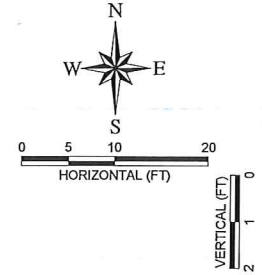
19TH AVE STA. 5+50 - 8+00

PROFESSIONAL ENGINEER
 LICENSED
 15145
 10.9.17
 STATE OF IDAHO
 GARRETT M. FREI

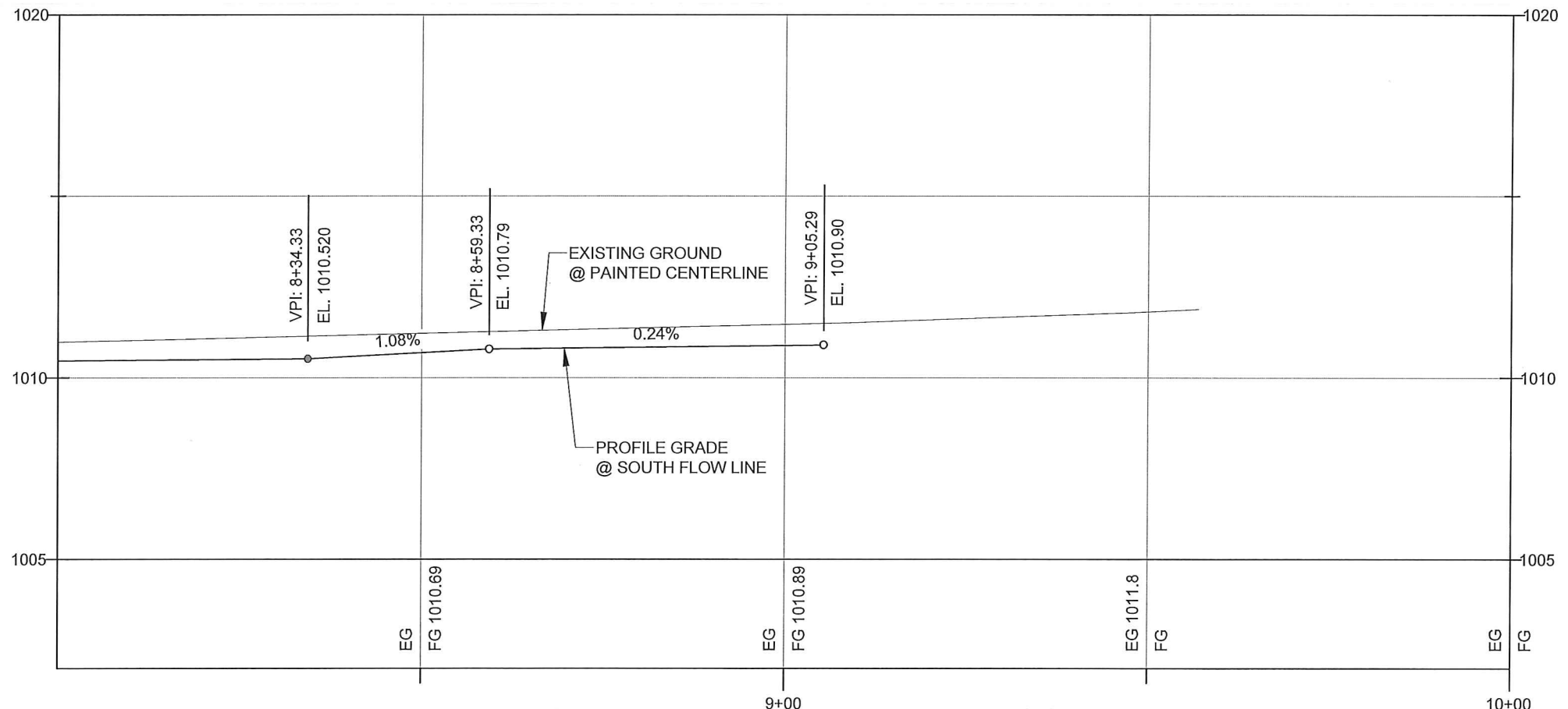
PLOT DATE: 10/5/2017
 E:\PROJECTS\2595 LEWISTON\19TH AVE\17TH ST\CADD\CIVIL\3D\DRAWINGS\2595 - 19TH PLAN.DWG



END CONSTRUCTION
 19TH AVE
 STA: 9+30.09
 N: 1728254.2291
 E: 2308037.3758



NOTE:
 1. ADJUST UTILITY LIDS AS NECESSARY, INCIDENTAL TO PROJECT



19TH AVE CENTERLINE PROFILE STA: 8+00 - 10+00

RIEDEL
 Engineering

77 Southway, Suite C
 Lewiston, Id. 83501
 Phone: (208) 743-3818
 Fax: (208) 743-3819

THIS DOCUMENT AND THE IDEAS AND DESIGNS INCORPORATED HEREIN, AS AN INSTRUMENT OF PROFESSIONAL SERVICES, IS THE PROPERTY OF RIEDEL ENGINEERING, INC. AND IS NOT TO BE USED, IN WHOLE OR IN PART, FOR ANY OTHER PROJECT, OR THE EXTENSION OF THIS PROJECT WITHOUT THE WRITTEN AUTHORIZATION OF RIEDEL ENGINEERING, INC.

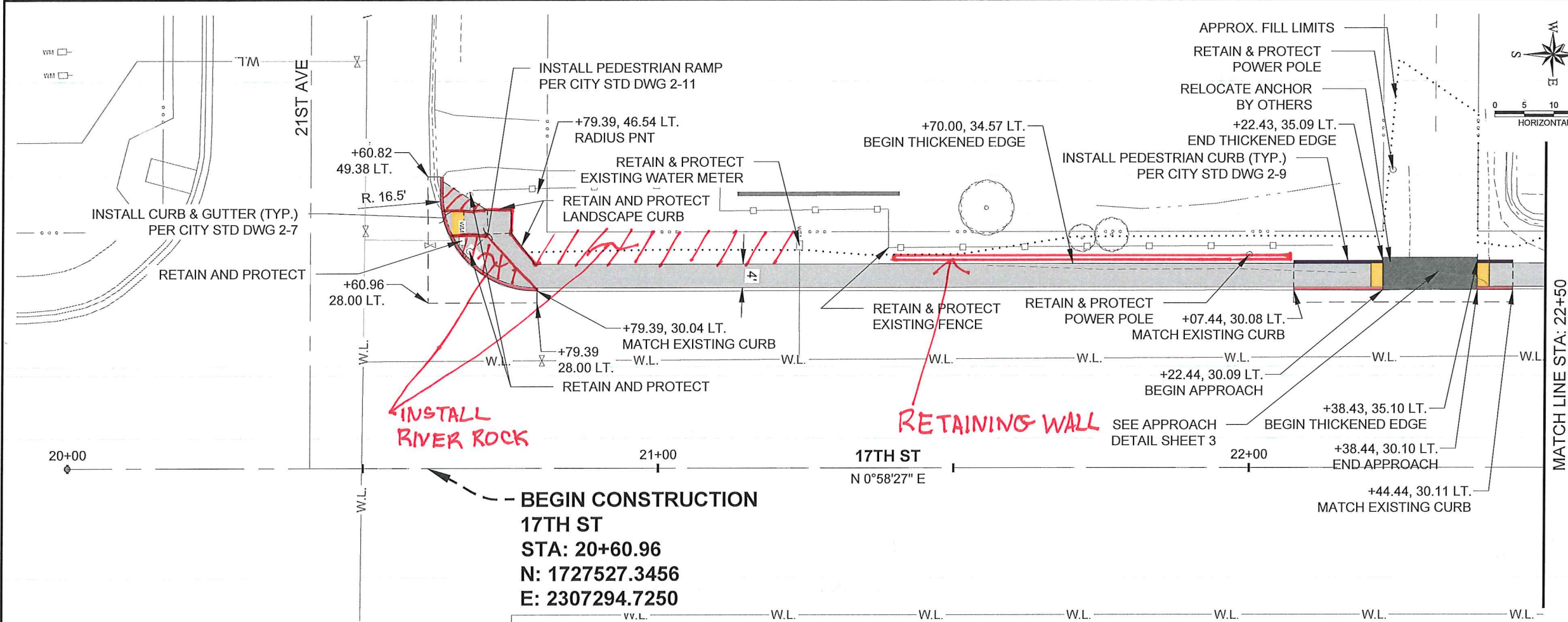
CITY OF LEWISTON 19TH AVE & 17TH ST
 IMPROVEMENT PROJECT
 CONSTRUCTION PLANS
 2017

19TH AVE STA. 8+00 - END

DESIGNED		DESIGN CHECKED		DETAILED		DRAWING CHECKED		FILE NAME		DRAWING DATE		DRAWING SCALE		AS SHOWN		SHEET 7 OF 13	
NO.	DATE	BY	DESCRIPTION	NO.	DATE	BY	DESCRIPTION	NO.	DATE	BY	DESCRIPTION	NO.	DATE	BY	DESCRIPTION	NO.	DATE

PROFESSIONAL ENGINEER
 LICENSED
 15145
 10.4.17
 STATE OF IDAHO
 GARRETT M. FREI

PLOT DATE: 10/5/2017
 E:\PROJECTS\2595 LEWISTON 19TH AVE 17TH ST\CADD\CIVIL 3D\DRAWINGS\2595 - 17TH WEST PLAN.DWG



INSTALL RIVER ROCK

RETAINING WALL

**BEGIN CONSTRUCTION
 17TH ST
 STA: 20+60.96
 N: 1727527.3456
 E: 2307294.7250**



DESIGNED: B/W
 DESIGN CHECKED: G/MF
 DETAILED: B/W
 DRAWING CHECKED: G/MF
 FILE NAME: 2595 - 17TH WEST PLAN.dwg
 DRAWING DATE: 9/8/17
 DRAWING SCALE: AS SHOWN
 SHEET 8 OF 13

CITY OF LEWISTON 19TH AVE & 17TH ST
 IMPROVEMENT PROJECT
 CONSTRUCTION PLANS
 2017

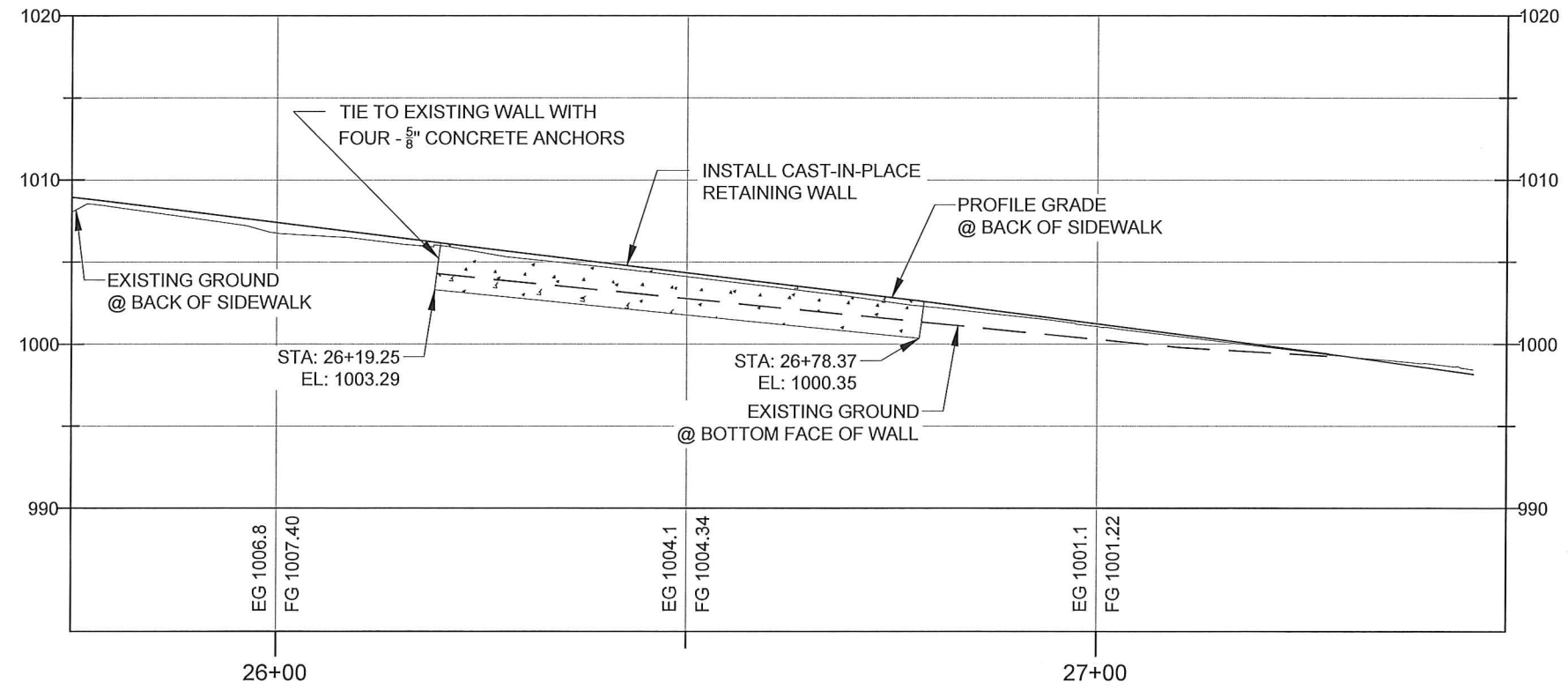
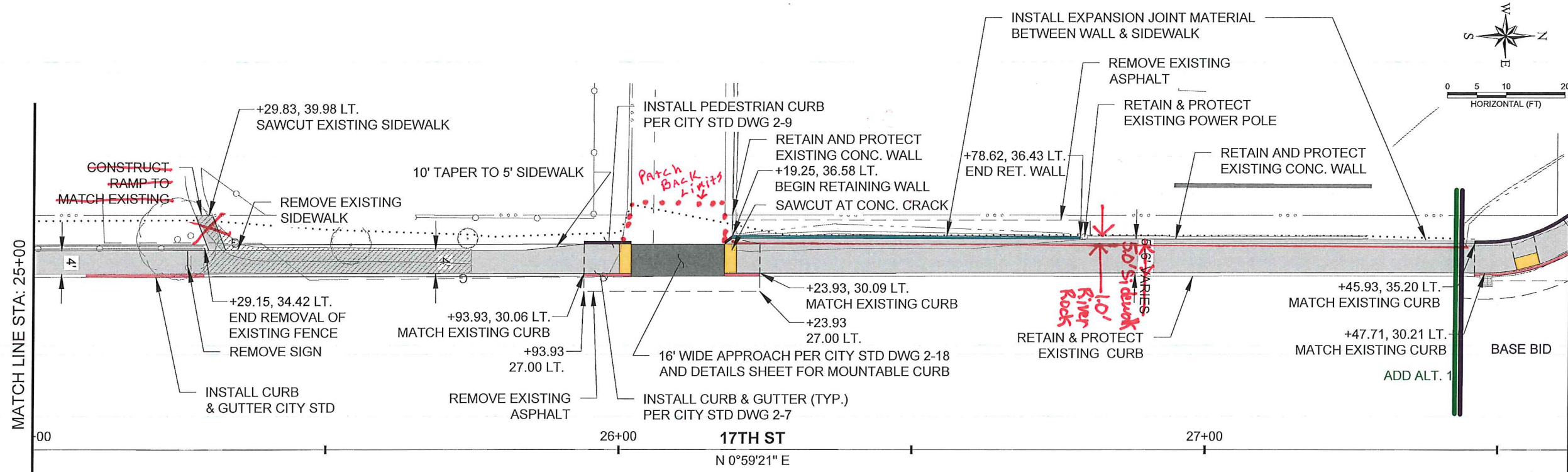
REVISIONS		NO.	DATE	BY	DESCRIPTION

RIEDEL Engineering

77 Southway, Suite C
 Lewiston, Id. 83501
 Phone: (208) 743-3818
 Fax: (208) 743-3819

THIS DOCUMENT, AND THE IDEAS AND DESIGNS INCORPORATED HEREIN, AS AN INSTRUMENT OF PROFESSIONAL SERVICES, IS THE PROPERTY OF RIEDEL ENGINEERING, INC. AND IS NOT TO BE USED, IN WHOLE OR IN PART, FOR ANY OTHER PROJECT, OR THE EXTENSION OF THIS PROJECT WITHOUT THE WRITTEN AUTHORIZATION OF RIEDEL ENGINEERING, INC.

PLOT DATE: 10/5/2017
 E:\PROJECTS\2595 LEWISTON 19TH AVE 17TH ST\CADD\CIVIL 3D\DRAWINGS\2595 - 17TH WEST PLAN.DWG



SEE SHEET 4

RIEDEL
 Engineering

77 Southway, Suite C
 Lewiston, Id. 83501
 Phone: (208) 743-3818
 Fax: (208) 743-3819

THIS DOCUMENT, AND THE IDEAS AND DESIGNS INCORPORATED HEREIN, AS AN INSTRUMENT OF PROFESSIONAL SERVICES, IS THE PROPERTY OF RIEDEL ENGINEERING, INC. AND IS NOT TO BE USED, IN WHOLE OR IN PART, FOR ANY OTHER PROJECT, OR THE EXTENSION OF THIS PROJECT WITHOUT THE WRITTEN AUTHORIZATION OF RIEDEL ENGINEERING, INC.

CITY OF LEWISTON 19TH AVE & 17TH ST
 IMPROVEMENT PROJECT
 CONSTRUCTION PLANS
 2017

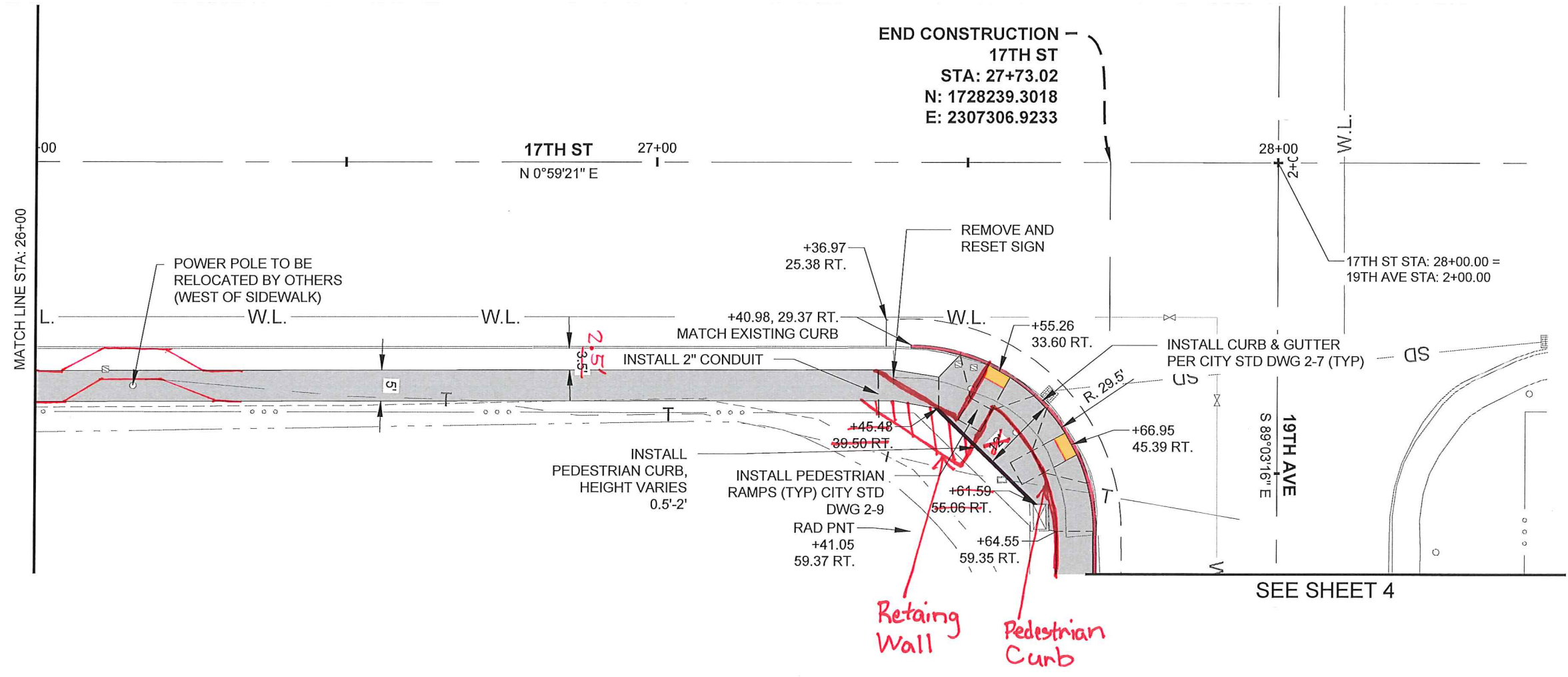
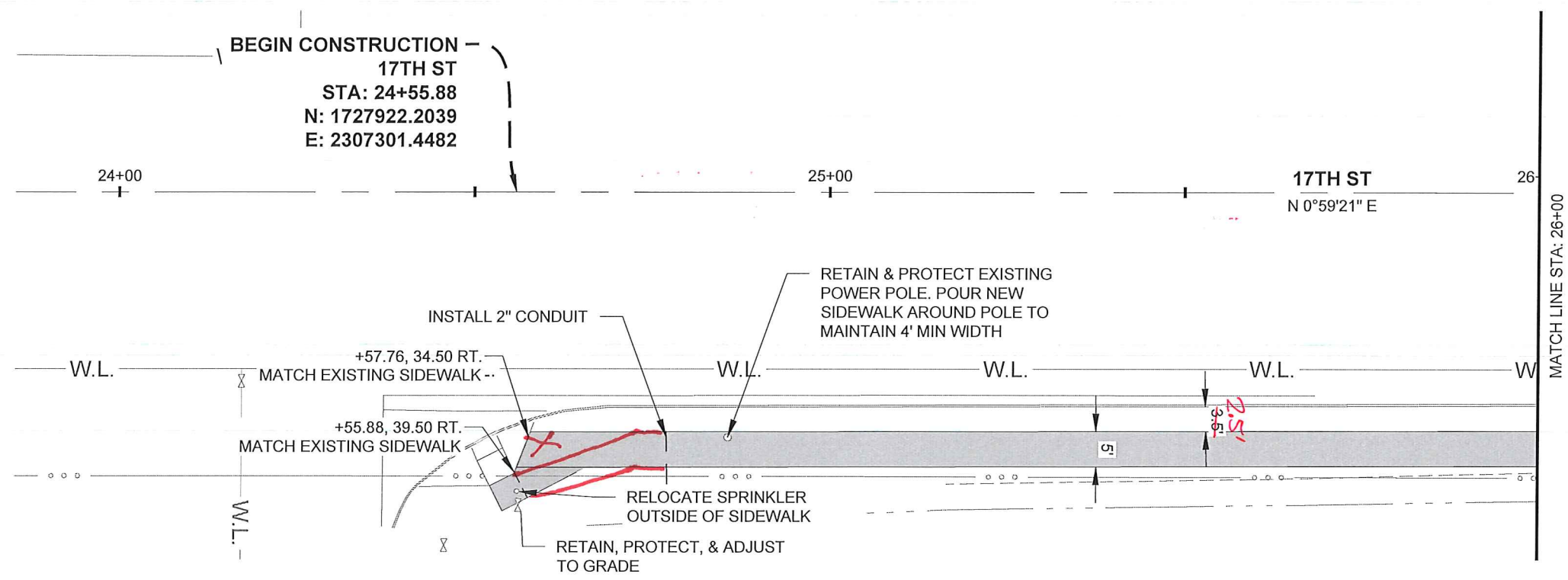
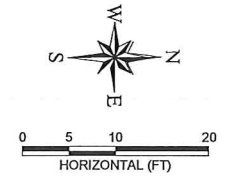
17TH ST WEST STA 25+00 - 27+50

NO.	DATE	BY	DESCRIPTION
1			
2			
3			
4			
5			
6			
7			
8			
9			
10			

DESIGNED	FILE NAME	2595 - 17TH WEST PLAN.dwg
DESIGN CHECKED	DRAWING DATE	9/8/17
DETAILED	DRAWING SCALE	AS SHOWN
DRAWING CHECKED	AS SHOWN	
SHEET	10	OF 13

PROFESSIONAL ENGINEER
 LICENSED
 15145
 10.4.17
 STATE OF IDAHO
 GARRETT M. FREI

PLOT DATE: 10/9/2017
 E:\PROJECTS\2595 LEWISTON 19TH AVE 17TH ST\CADD\CIVIL 3D\DRAWINGS\2595 - 17TH EAST PLAN.DWG



RIEDEL
 Engineering

THIS DOCUMENT, AND THE IDEAS AND DESIGNS INCORPORATED HEREIN, AS AN INSTRUMENT OF PROFESSIONAL SERVICES, IS THE PROPERTY OF RIEDEL ENGINEERING, INC. AND IS NOT TO BE USED, IN WHOLE OR IN PART, FOR ANY OTHER PROJECT, OR THE EXTENSION OF THIS PROJECT WITHOUT THE WRITTEN AUTHORIZATION OF RIEDEL ENGINEERING, INC.

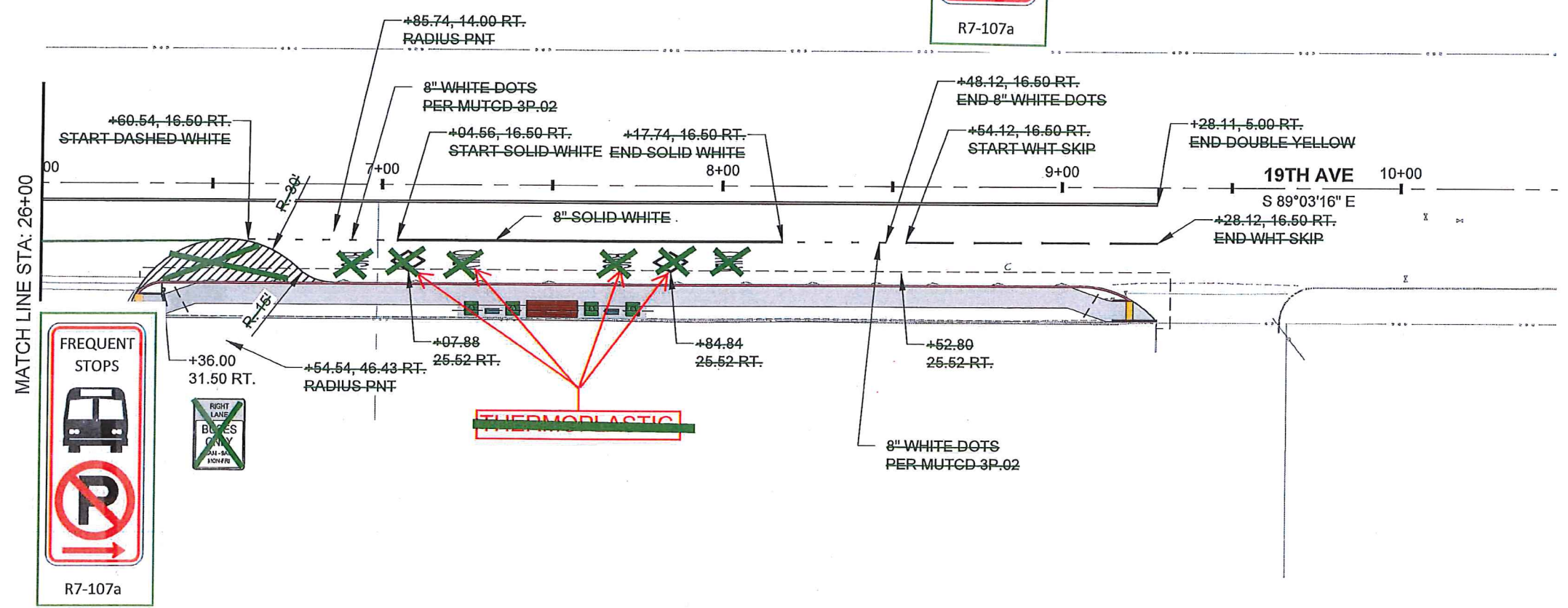
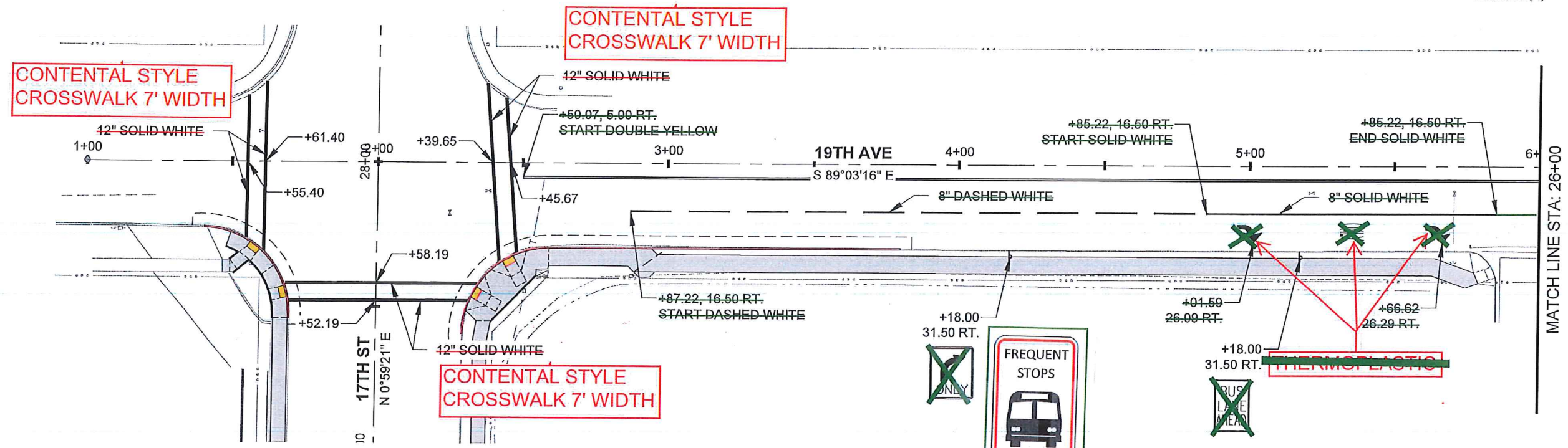
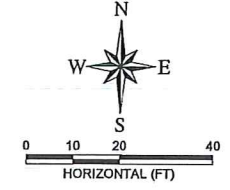
77 Southway, Suite C
 Lewiston, Id. 83501
 Phone: (208) 743-3818
 Fax: (208) 743-3819

CITY OF LEWISTON 19TH AVE & 17TH ST
 IMPROVEMENT PROJECT
 CONSTRUCTION PLANS
 2017

DESIGNED		DESIGN CHECKED		DETAILED		DRAWING CHECKED		FILE NAME		DRAWING DATE		DRAWING SCALE		SHEET 11 OF 13	
NO.	DATE	BY	DESCRIPTION	NO.	DATE	BY	DESCRIPTION	NO.	DATE	BY	DESCRIPTION	NO.	DATE	BY	DESCRIPTION
1				1				2595 - 17TH EAST	9/20/17			AS SHOWN			

PROFESSIONAL ENGINEER
 LICENSED
 15145
 10.4.17
 STATE OF IDAHO
 GARRETT M. FREI

PLOT DATE: 10/5/2017
 E:\PROJECTS\2555 LEWISTON 19TH AVE 17TH ST\CADD\CIVIL 3\DRAWINGS\2555 - SPMP.DWG



MATCH LINE STA: 26+00

MATCH LINE STA: 26+00

CONTENTAL STYLE
CROSSWALK 7' WIDTH

CONTENTAL STYLE
CROSSWALK 7' WIDTH

CONTENTAL STYLE
CROSSWALK 7' WIDTH



RIEDEL
Engineering

77 Southway, Suite C
 Lewiston, Id. 83501
 Phone: (208) 743-3818
 Fax: (208) 743-3819

THIS DOCUMENT, AND THE IDEAS AND DESIGNS INCORPORATED HEREIN, AS AN INSTRUMENT OF PROFESSIONAL SERVICES, IS THE PROPERTY OF RIEDESEL ENGINEERING, INC. AND IS NOT TO BE USED, IN WHOLE OR IN PART, FOR ANY OTHER PROJECT OR THE EXTENSION OF THIS PROJECT WITHOUT THE WRITTEN AUTHORIZATION OF RIEDESEL ENGINEERING, INC.

CITY OF LEWISTON 19TH AVE & 17TH ST
 IMPROVEMENT PROJECT
 CONSTRUCTION PLANS
 2017

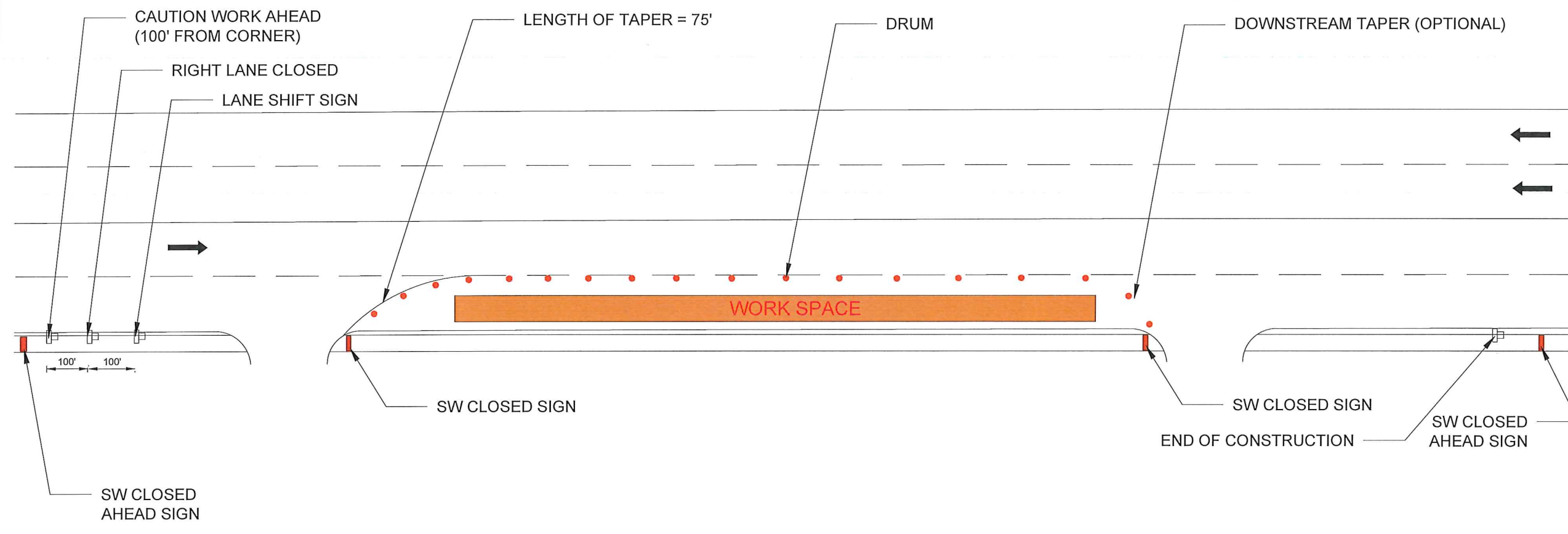
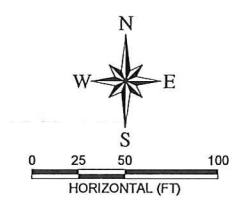
STRIPING & PAVEMENT MARKING PLAN

NO.	DATE	BY	DESCRIPTION
1	4/2/19	AMB	City std. x-walk style & thermoplastic

DESIGNED	BAW
DESIGN CHECKED	GMF
DETAILED	BAW
DRAWING CHECKED	GMF
FILE NAME	2555 - SPMP.dwg
DRAWING DATE	9/17/17
DRAWING SCALE	AS SHOWN
SHEET	12 OF 13

PROFESSIONAL ENGINEER
 LICENSED
 15145
 10.4.17
 STATE OF IDAHO
 GARRETT M. FREI

PLOT DATE: 10/5/2017
 E:\PROJECTS\2595 LEWISTON 19TH AVE 17TH ST\CADD\CIVIL 3D\DRAWINGS\2595 - TCP.DWG



NOT TO SCALE

RIEDEL
 Engineering

THIS DOCUMENT, AND THE IDEAS AND DESIGNS INCORPORATED HEREIN, AS AN INSTRUMENT OF PROFESSIONAL SERVICES, IS THE PROPERTY OF RIEDESEL ENGINEERING, INC. AND IS NOT TO BE USED, IN WHOLE OR IN PART, FOR ANY OTHER PROJECT, OR THE EXTENSION OF THIS PROJECT WITHOUT THE WRITTEN AUTHORIZATION OF RIEDESEL ENGINEERING, INC.

77 Southway, Suite C
 Lewiston, Id. 83501
 Phone: (208) 743-3818
 Fax: (208) 743-3819

CITY OF LEWISTON 19TH AVE & 17TH ST
 IMPROVEMENT PROJECT
 CONSTRUCTION PLANS
 2017

TRAFFIC CONTROL PLAN

NO.	DATE	BY	DESCRIPTION
1			
2			
3			
4			
5			
6			

DESIGNED	GMF
DESIGN CHECKED	GMF
DETAILED	
DRAWING CHECKED	GMF
FILE NAME	2595 - TCP.dwg
DRAWING DATE	9/1/17
DRAWING SCALE	AS SHOWN
SHEET	13 OF 13

PROFESSIONAL ENGINEER
 LICENSED
 15145
 10.4.17
 STATE OF IDAHO
 GARRETT M. FREI