

- SHEET INDEX**
1. Site Plan & Vicinity Map
 2. Legend & Construction Notes
 3. Plan & Profile - Line A
 4. Plan & Profile - Line B
 5. Phasing Plan
- 4.B - Plant Profile Line B *A.B.*



Record Drawing 3-4-15

DESIGNED BY: S.M.		SCALE: 1"=100' (11x17)		
DRAWN BY: S.M.		DATE: May 2014		
CHECKED BY: B.H.		DRAWING NO.: S10plan.dwg		
JOB NO.:		SHEET 1 OF 5		
NO.	DATE	FILENAME	DESCRIPTION	BY
WATER DEPARTMENT SITE PLAN & VICINITY MAP 22nd Avenue & 1st Street Water Main Replacement				
CITY OF LEWISTON PUBLIC WORKS DEPARTMENT ENGINEERING SERVICES 25 D STREET LEWISTON, ID 83501 (208) 746-4316				

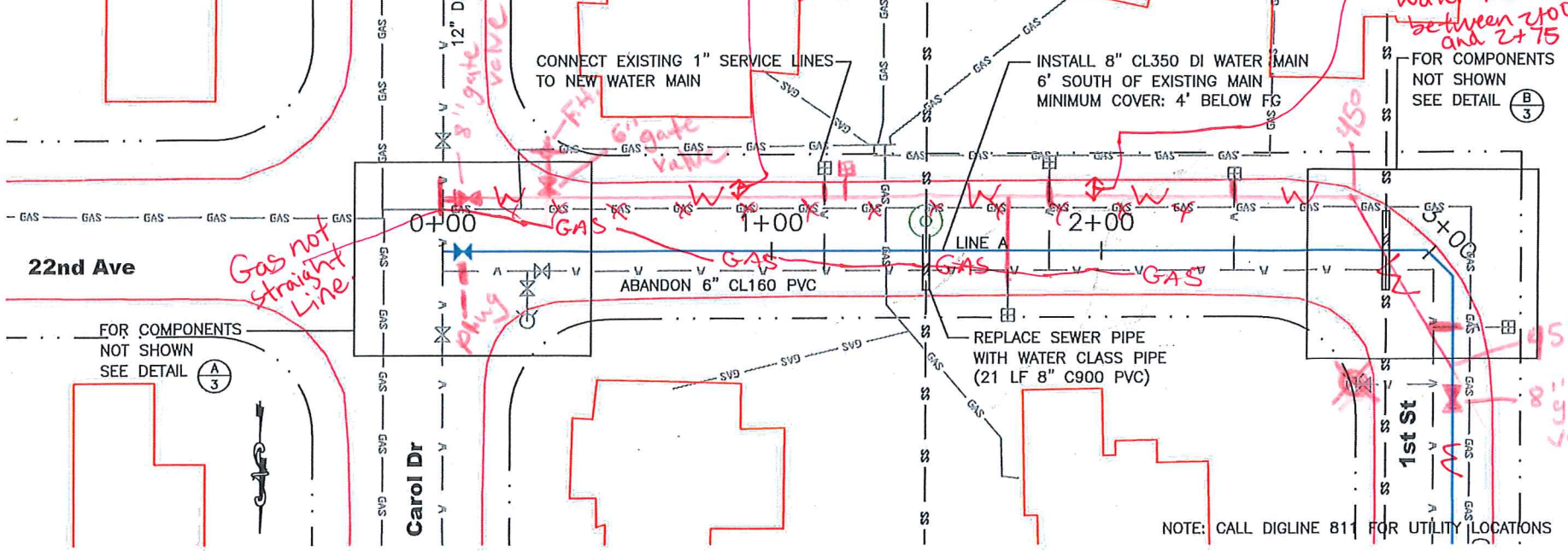
LEGEND					
EXISTING	PROPOSED	ITEM	EXISTING	PROPOSED	ITEM
		Deciduous Tree	— P —		Power
		Shrub	— T —		Telephone
		Traffic Sign	— SD —		Storm Drain
		Telephone Riser	— SS —		Sanitary Sewer
		Utility Pole	△		Survey Control Point
		Utility Pole Anchor	⊙		Monument
		Gas Meter or Gas Valve	— x —		Wire Fence
		Catch Basin	— . . . —		Right-of-Way or Property Line
		Storm Drain Manhole			Edge of Pavement
		Sanitary Sewer Manhole			Curb & Gutter
		Water Meter Setting			
		Water Valve			
		Fire Hydrant			
		Pressure Reducing Valve (PRV) Station			
		Remove & Replace (Fire Hydrant, Water Meter Setting, or Valve)			
		Remove (Fire Hydrant, Water Meter Setting, or Valve)			Detail or Section Designation
					Sheet Number on Which Detail Appears
— W —		Water			Component Location Reference
— GAS —		Gas			Thrust Block Bearing Area
— CIV —		Cable TV			

CONSTRUCTION NOTES

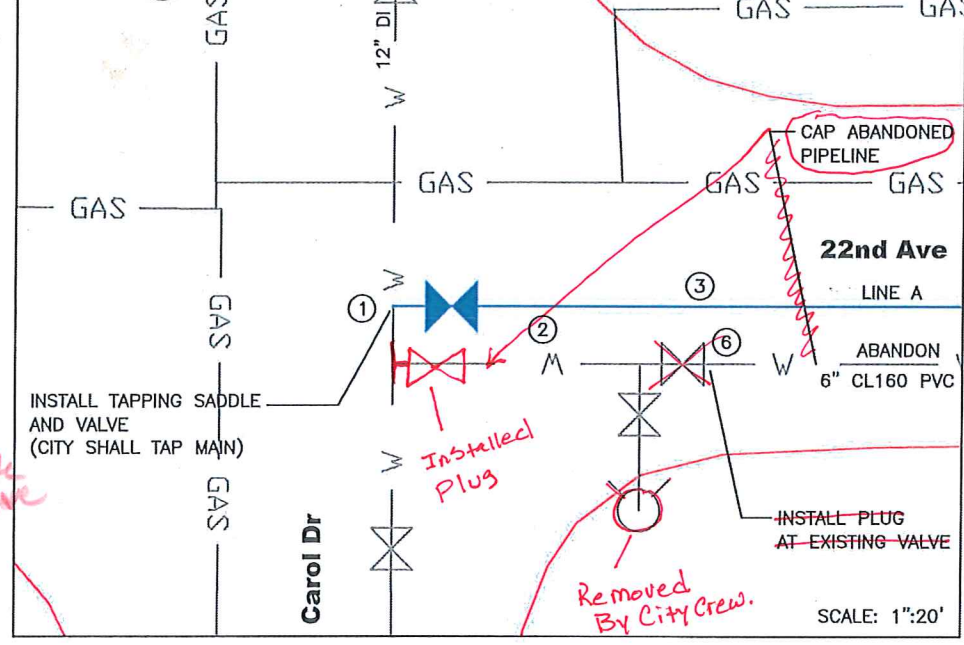
- UTILITY LOCATIONS SHOWN ARE APPROXIMATE. CONTRACTOR SHALL VERIFY EXACT LOCATIONS IN FIELD PRIOR TO EXCAVATION. ANY UTILITIES DAMAGED DURING CONSTRUCTION SHALL BE REPAIRED BY THE CONTRACTOR OR UTILITY COMPANY, AT THE CONTRACTOR'S EXPENSE, TO THE SATISFACTION OF THE UTILITY COMPANY. CONTRACTORS SHALL BE RESPONSIBLE TO CONTACT THE LOCAL ONE-CALL SYSTEM AT 811 AT LEAST TWO DAYS PRIOR TO ANY DIGGING.
- UTILITY FORCES MAY ENGAGE IN MOVING, RECONSTRUCTING OR INSTALLING, OR MAINTAINING UTILITY FACILITIES, AND THE CONTRACTOR SHALL COOPERATE WITH THESE FORCES AND CONDUCT OPERATIONS IN SUCH A MANNER AS TO AVOID ANY DELAY TO WORK BEING PERFORMED BY OTHER FORCES. THE CONTRACTOR SHALL JOIN HIS WORK WITH THE WORK OF THE OTHERS AND PERFORM THE WORK IN PROPER SEQUENCE AND WITH JUDICIOUS HANDLING OF FORCES AND EQUIPMENT.
- ~~SURVEYING AND CONSTRUCTION STAKING FOR SEWER AND WATER MAIN CONSTRUCTION WILL BE PERFORMED BY THE CITY OF LEWISTON. CONTRACTOR SHALL RETAIN AND PROTECT CONSTRUCTION STAKING, AND SHALL NOTIFY THE ENGINEER OF ANY ERRORS.~~ OB
- THE NEW WATER MAIN SHALL BE CONSTRUCTED IN ACCORDANCE WITH THESE PLANS AND THE 2012 IDAHO STANDARDS FOR PUBLIC WORKS CONSTRUCTION, AS AMENDED BY THE SPECIAL PROVISIONS AND THE REFERENCED CITY OF LEWISTON STANDARD DRAWINGS. ALL WORK SHALL BE SUBJECT TO ACCEPTANCE BY THE CITY OF LEWISTON PURSUANT TO THE ENGINEERING DEPARTMENT'S CURRENT INSPECTION CHECKLIST.
- THE NEW WATER MAIN SHALL BE CONSTRUCTED IN THE SEQUENCE INDICATED BY THE PHASING PLAN, UNLESS OTHERWISE DIRECTED.
- ALL WATER AND SEWER PIPELINES SHALL BE INSTALLED USING CLASS A-1 BEDDING SYSTEM. ALL TRENCHES AND EXCAVATED AREAS SHALL BE BACKFILLED TO FINISH GRADE WITH CRUSHED AGGREGATE BACKFILL IN ACCORDANCE WITH CITY OF LEWISTON STANDARD DRAWING 1-7. EXCESS AGGREGATE SHALL BE REMOVED PRIOR TO PAVEMENT REPLACEMENT. RESTORATION OF PAVEMENT SURFACING SHALL BE IN ACCORDANCE WITH THE PROVISIONS OF ISPWC SECTION 801 FOR HOT MIX PAVEMENT CLASS I (1/2" OR 3/4").
- ALL WATER MAINS SHALL BE INSTALLED WITH MINIMUM HORIZONTAL SEPARATION OF 10' BETWEEN THE WATER AND THE SANITARY OR STORM SEWER MAINS AND IN COMPLIANCE WITH CITY OF LEWISTON STANDARD DRAWING 4-1.
- THRUST BLOCKS SHALL BE INSTALLED AT ALL FITTING LOCATIONS SPECIFIED BY CITY STANDARD DRAWING 4-4. THRUST BLOCKS SHALL BE CONSTRUCTED TO SIZES BASED ON ALLOWABLE SOIL STRESS OF 2000 PSI. ALL MECHANICAL JOINTS 10" AND SMALLER SHALL BE EQUIPPED WITH RING-TYPE GRIP RESTRAINT DEVICES AS REQUIRED BY THE SPECIFICATIONS.
- REMOVAL OF CURB FOR HYDRANT INSTALLATION SHALL BE INCIDENTAL TO THAT ITEM. PAY LENGTH FOR REPLACEMENT OF CURB AND GUTTER OVER HYDRANT LEADS SHALL BE AS DIRECTED BY THE ENGINEER. WHEN WATER SERVICES ARE REQUIRED BENEATH EXISTING CURBS, THE CONTRACTOR SHALL RETAIN AND PROTECT EXISTING CURBS.
- THE CONTRACTOR SHALL PRESSURE TEST THE NEW WATER MAIN IN ACCORDANCE WITH THE SPECIFICATIONS AND AWWA C600.
- EXCEPT AS REQUIRED IN THE SPECIFICATIONS, THE CONTRACTOR WILL NOT BE REQUIRED TO DISINFECT NEW WATER MAINS; THE CONTRACTOR SHALL INSTALL FITTINGS AND APPURTENANCES AS REQUIRED BY THE OWNER FOR DISINFECTION. THE CITY OF LEWISTON WATER DEPARTMENT WILL THEN PERFORM SYSTEM DISINFECTION AND ALL THE BACTERIOLOGICAL TESTING AS INDICATED BY THE PHASING PLAN.
- ALL DISTURBED AREAS SHALL BE RESTORED TO THEIR ORIGINAL CONDITION. ALL RESTORATION OF PAVEMENT, SIDEWALK, CURB, AND GUTTER SHALL BE IN CONFORMANCE WITH THE CITY OF LEWISTON STANDARD DRAWINGS AND THE SPECIFICATIONS OF THE IDAHO STANDARDS FOR PUBLIC WORKS CONSTRUCTION. ALL RESTORATION SHALL BE CONSIDERED INCIDENTAL TO THE PROJECT.

DESIGNED BY:	S.M.	SCALE:	None
DRAWN BY:	S.M.	DATE:	May 2014
CHECKED BY:	E.H.	DRAWING NO.:	sitoplans.dwg
DATE:		SHEET:	2 OF 5
FILENAME:		BY:	
NO.		DESCRIPTION:	
DATE:		DESCRIPTION:	
NO.		DESCRIPTION:	
WATER DEPARTMENT LEGEND & CONSTRUCTION NOTES 22nd Avenue & 1st Street Water Main Replacement			
CITY OF LEWISTON PUBLIC WORKS DEPARTMENT ENGINEERING SERVICES 216 D STREET LEWISTON, ID 83571 (208) 746-5316			

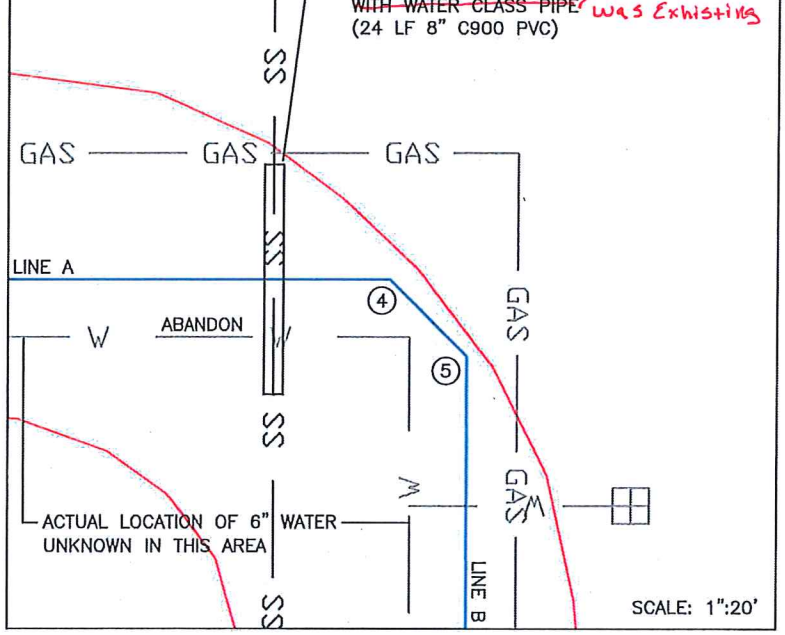
LINE A PLAN



DETAIL A



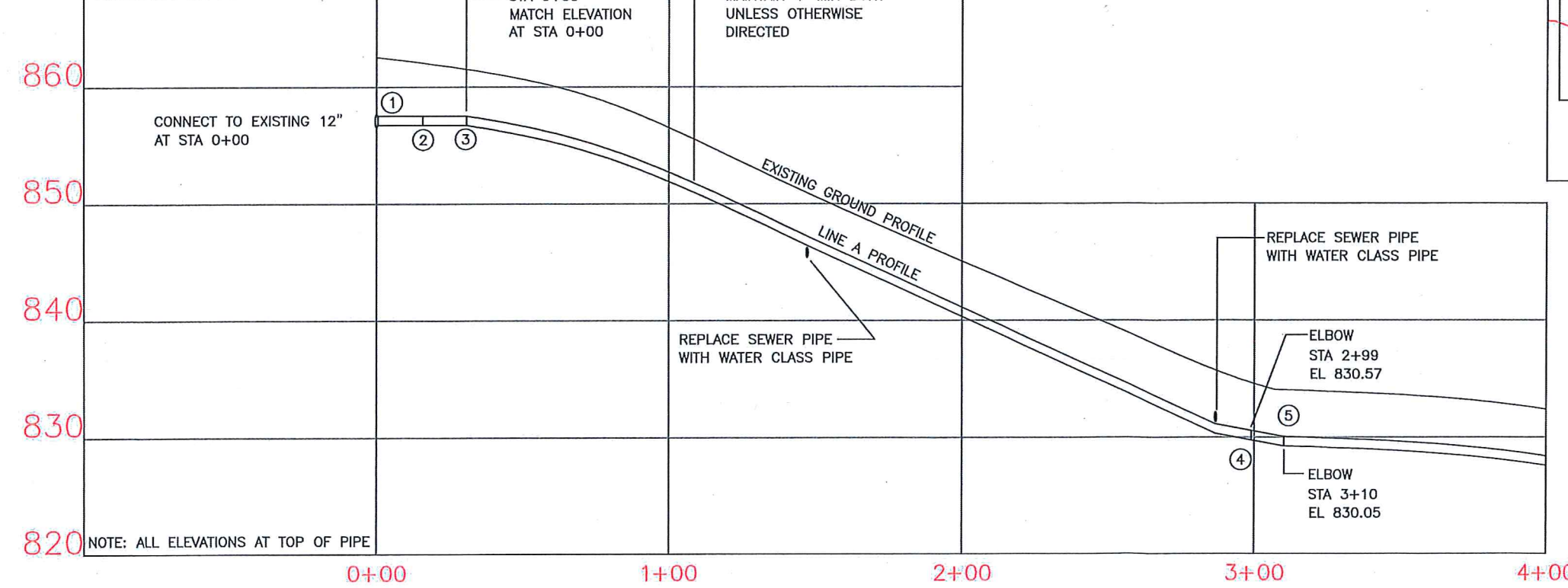
DETAIL B



WATER MAIN SCHEDULE

TAG	FITTINGS	TAG	FITTINGS	TAG	FITTINGS
1	12"x8" FL TAPPING SLEEVE (ROMAC SST)	3	BLOWOFF ASSEMBLY (TEMP)	6	8" PLUG
			8" MJ SOLID SLEEVE	7-9	NOT USED
	8" FL x MJ GATE VALVE	4	8" MJ 45 ELL		
	CONNECT TO EXISTING	5	8" MJ 45 ELL		
2	8" MJ SOLID SLEEVE				

LINE A PROFILE



NO.	DATE	FILENAME	DESCRIPTION	BY

WATER DEPARTMENT
 PLAN & PROFILE
 22nd Avenue & 1st Street
 Water Main Replacement

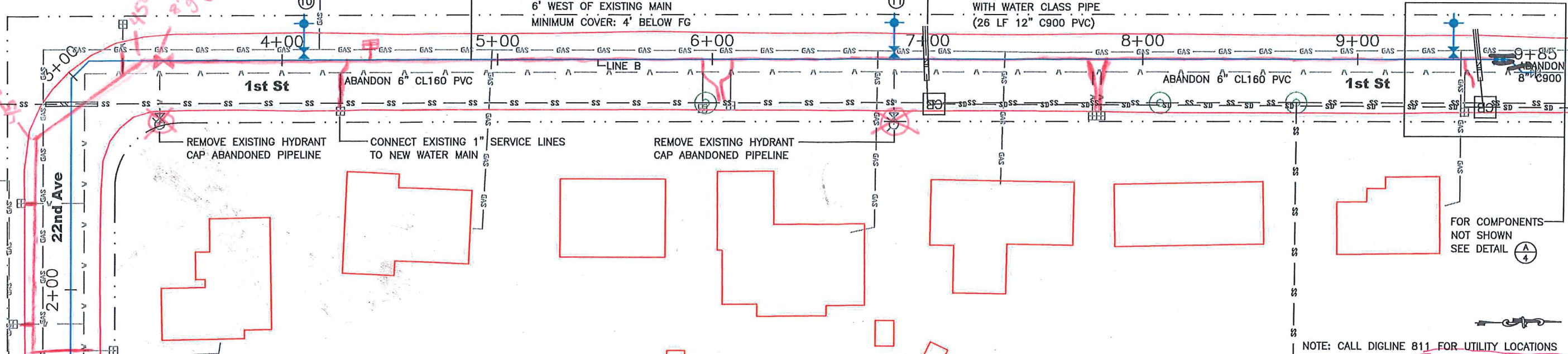


CITY OF LEWISTON
 PUBLIC WORKS DEPARTMENT
 ENGINEERING SERVICES
 25 D STREET LEWISTON, ID 83501
 (208) 746-4316



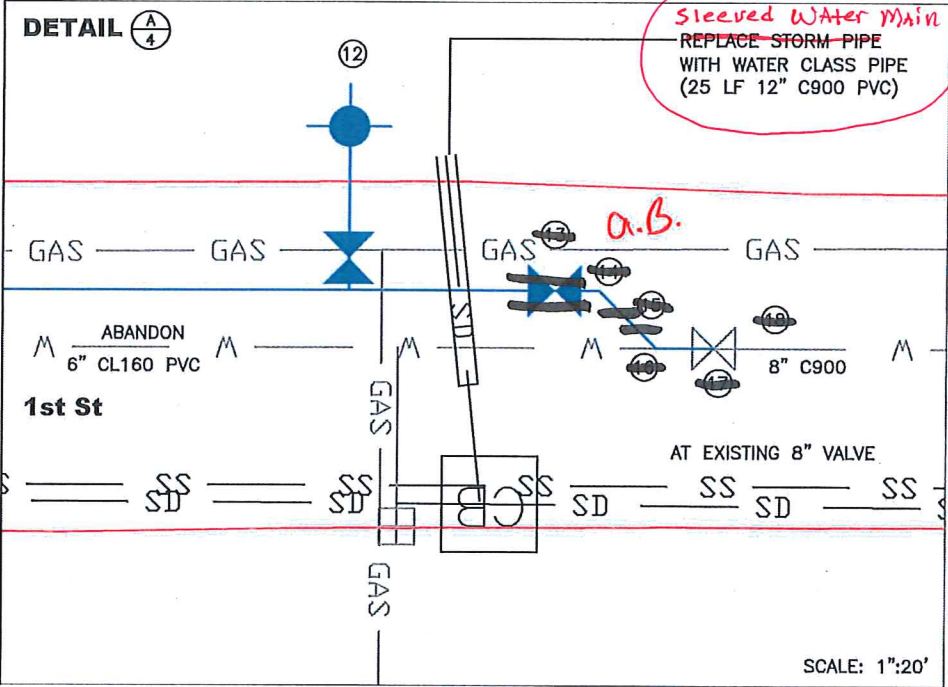
SCALE: 1":50' (11x17)
 DATE: May 2014
 DRAWING NO.: S10PLAN.CHG
 SHEET 3 OF 5

LINE B PLAN

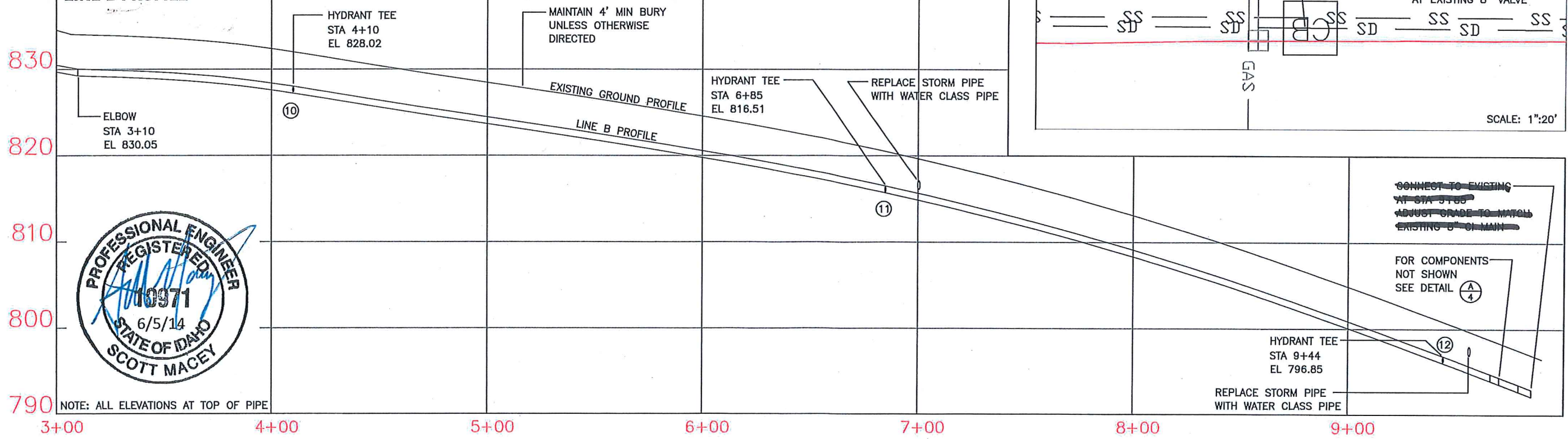


WATER MAIN SCHEDULE

TAG	FITTINGS	TAG	FITTINGS	TAG	FITTINGS
10	HYDRANT ASSEMBLY (17' LT, 5' BURY)	13	8" MJ GATE VALVE	18	8" x 2" TAPPING SADDLE (ROMAC 202S)
11	HYDRANT ASSEMBLY (17' LT, 5' BURY)	14	8" MJ 45 ELL	19	2" CORPORATION STOP
12	HYDRANT ASSEMBLY (17' LT, 5' BURY)	15	BLOWOFF ASSEMBLY (TEMP)	20	BLOWOFF ASSEMBLY (TEMP)
		16	8" MJ 45 ELL		
		17	CONNECT TO EXISTING		



LINE B PROFILE



WATER DEPARTMENT
PLAN & PROFILE
22nd Avenue & 1st Street
Water Main Replacement

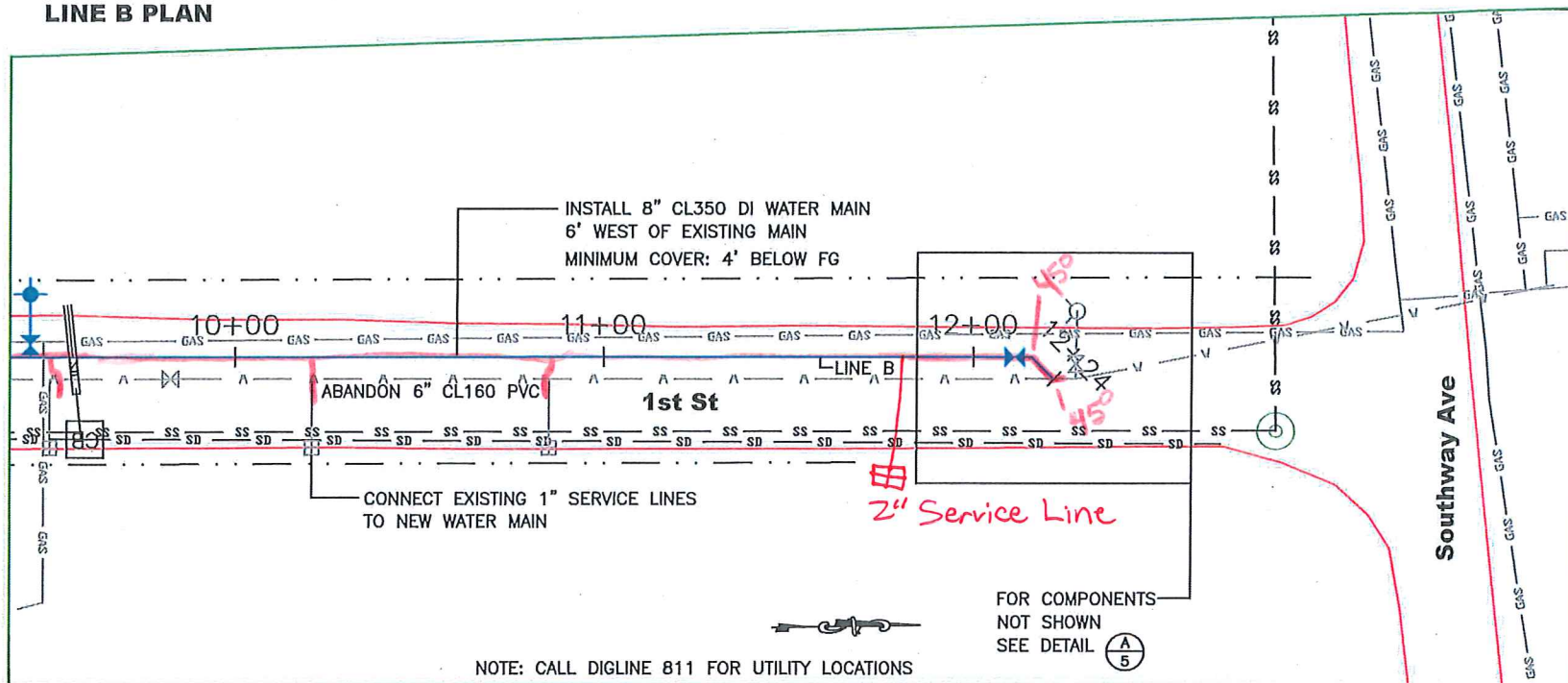
CITY OF LEWISTON
 PUBLIC WORKS DEPARTMENT
 ENGINEERING SERVICES
 26 D STREET LEWISTON, ID 83501
 (208) 746-4376

SCALE: 1"=50' (11x17)
 ASSIGNED BY: S.M.
 DRAWN BY: S.M.
 CHECKED BY: B.H.
 DATE: May 2014
 DRAWING NO.: Sileplan.dwg
 SHEET 4 OF 5

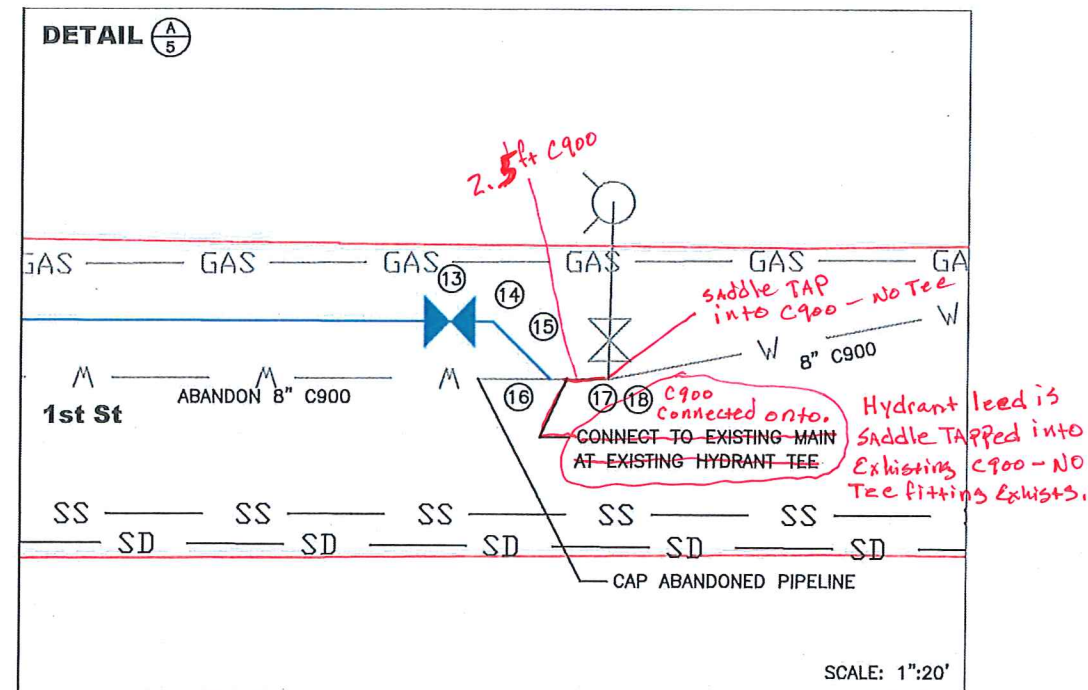
NO.	DATE	FILENAME	DESCRIPTION	BY

-AP11ALV: d:\3... 2100101\22ndAveWater.dwg (macey onty).dwg, 11/14/2014 7:06:47 AM

LINE B PLAN

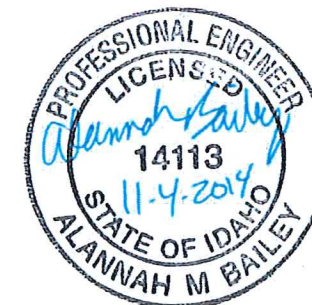
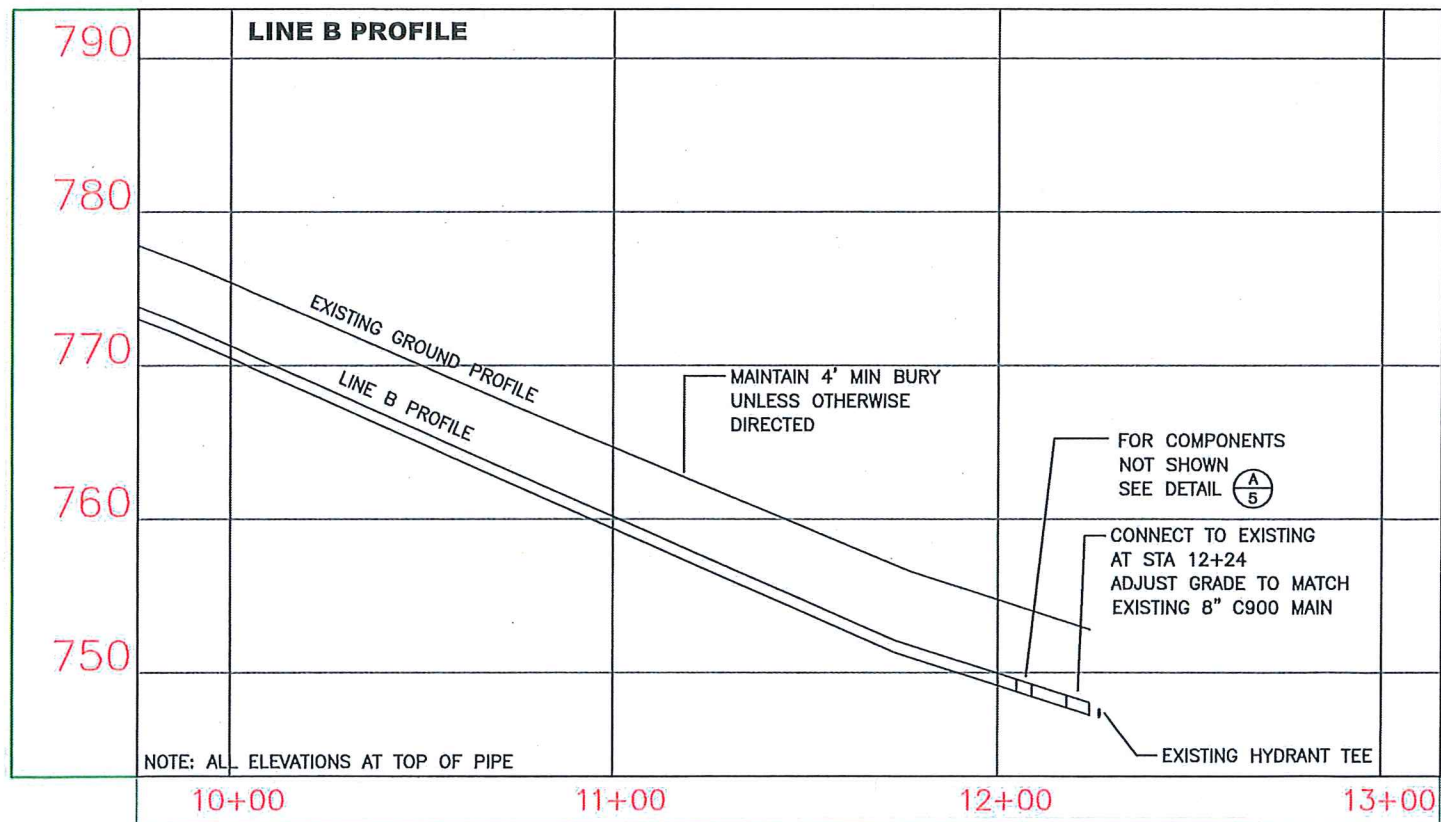


DETAIL A/5



WATER MAIN SCHEDULE

TAG	FITTINGS	TAG	FITTINGS
13	8" MJ GATE VALVE	18	8" x 2" TAPPING SADDLE (ROMAC 202S)
14	8" MJ 45 ELL		2" CORPORATION STOP
15	BLOWOFF ASSEMBLY (TEMP)		BLOWOFF ASSEMBLY (TEMP)
	8" MJ SOLID SLEEVE		
16	8" MJ 45 ELL		
17	CONNECT TO EXISTING		



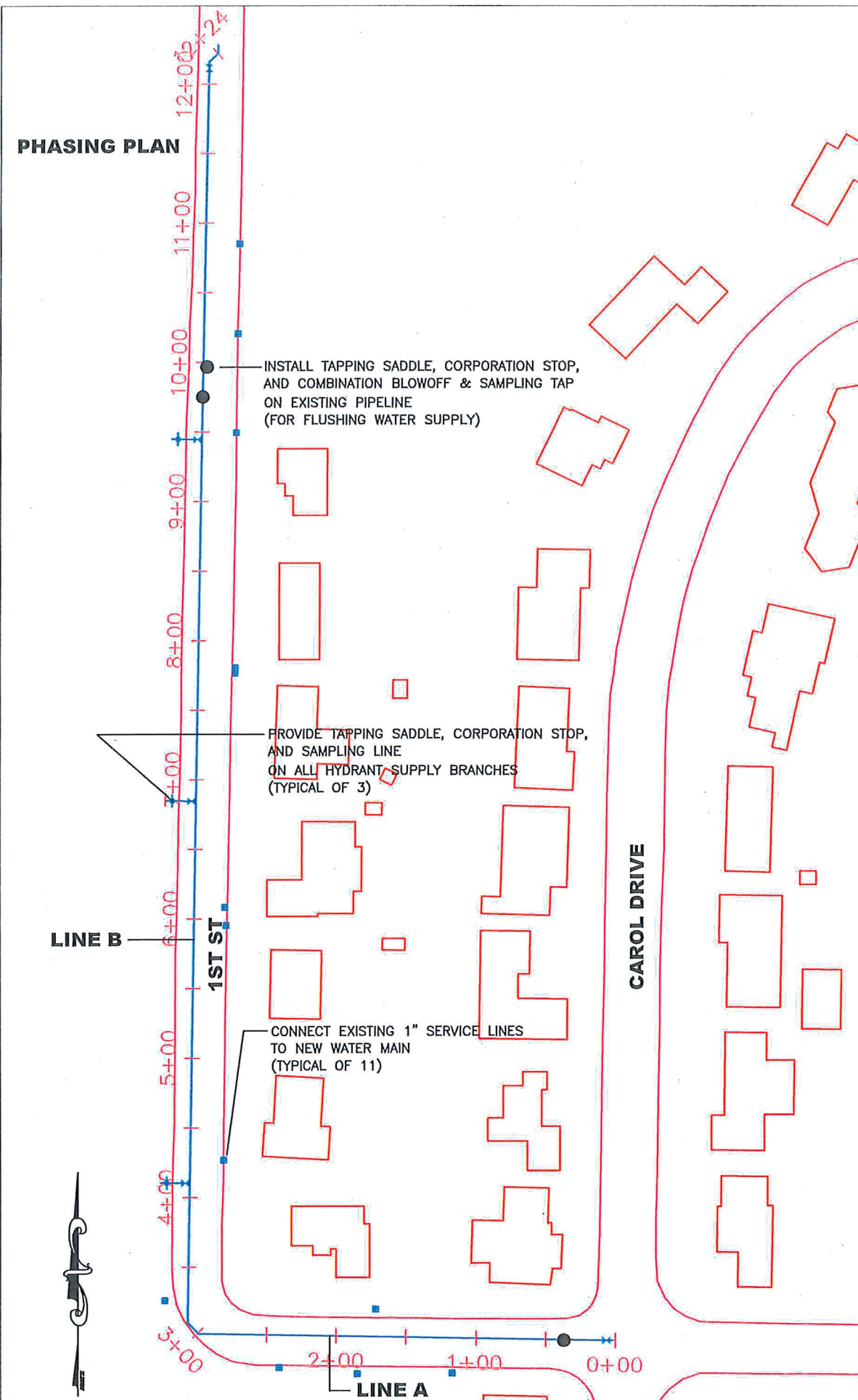
WATER DEPARTMENT
PLAN & PROFILE
22nd Avenue & 1st Street
Water Main Replacement

DESIGNED BY: A.B. SCALE: 1"=50' (11x17)
 DRAWN BY: A.B. DATE: November 2014
 CHECKED BY: B.H. DRAWING NO.: s1eplan.dwg
 JOB NO.: SHEET 4B OF 5

REVISIONS
 NO. DATE FILENAME DESCRIPTION BY

CITY OF LEWISTON
PUBLIC WORKS DEPARTMENT
ENGINEERING SERVICES
 25 D STREET LEWISTON ID 83501
 (208) 746-836

PHASING PLAN



● Denotes Required Combination Blowoff & Sampling Tap (City Standard 4-3)

SEQUENCE OF CONSTRUCTION

THE SEQUENCE OF CONSTRUCTION APPEARING IN THE CONTRACT PLANS SHOWS THE ANTICIPATED METHOD OF CONSTRUCTING THE PLANNED PROJECT WITH THE FEWEST SERVICE INTERRUPTIONS AND PUBLIC INCONVENIENCE. THE CONTRACTOR SHALL CONDUCT THE PROJECT IN THE MANNER PRESENTED UNLESS OTHERWISE AUTHORIZED. IF THE CONTRACTOR'S PROPOSED METHODS DIFFER FROM THE PLANNED SEQUENCE OF CONSTRUCTION, THE CONTRACTOR MUST SUBMIT THE PROPOSED MODIFICATION OF THE PROJECT SEQUENCE TO THE ENGINEER AT LEAST TEN CALENDAR DAYS IN ADVANCE OF THE REQUESTED CHANGE. THE CONTRACTOR SHALL ALSO PRESENT THE REQUIRED CHANGES IN THE PROJECT'S TRAFFIC CONTROL PLANS BY SHOWING THE NECESSARY CONSTRUCTION SIGNS, FLAGGERS, AND OTHER TRAFFIC CONTROL DEVICES REQUIRED FOR THE CHANGE.

HYDROSTATIC TEST

MAKE PRESSURE AND LEAKAGE TESTS ON ALL NEWLY LAID PIPE AND VALVED SECTIONS OF IT. FURNISH ALL NECESSARY EQUIPMENT AND MATERIAL, MAKE ALL TAPS, AND FURNISH ALL CLOSURE PIECES IN THE PIPE AS REQUIRED. THE CITY WILL MONITOR AND APPROVE A SATISFACTORY TEST. PRESSURE TEST PROCEDURES SHALL CONFORM TO AWWA C600 AS HEREINAFTER MODIFIED OR EXPANDED, AND THE REQUIREMENTS OF ANY GOVERNING AGENCY HAVING JURISDICTION. CONDUCT TESTS AFTER THE TRENCH HAS BEEN PARTIALLY BACK-FILLED WITH THE JOINTS LEFT EXPOSED FOR INSPECTION, OR WHEN COMPLETELY BACK-FILLED, AS PERMITTED BY THE CITY. WHERE ANY SECTION OF PIPE IS PROVIDED WITH CONCRETE THRUST BLOCKING, DO NOT CONDUCT PRESSURE TEST UNTIL AT LEAST 2 DAYS HAVE ELAPSED AFTER THE CONCRETE THRUST BLOCKING WAS INSTALLED. IF HIGH-EARLY CEMENT IS USED FOR THE CONCRETE THRUST BLOCKING, THE TIME MAY BE REDUCED TO 1 DAY. AFTER THE PIPE HAS BEEN BACK-FILLED OR PARTIALLY BACK-FILLED, AS HEREIN SPECIFIED, FILL THE PIPE WITH WATER, EXPELLING AIR DURING FILLING, AND PERMIT IT TO STAND FOR A 24-HOUR PERIOD TO ALLOW NATURAL ABSORPTION TO TAKE PLACE. THE PRESSURE TO BE USED IN THE TEST SHALL BE THE GREATER OF 1.5 TIMES THE WORKING PRESSURE OR 150 PSI. BEFORE DISINFECTING, FLUSH ALL FOREIGN MATTER FROM THE PIPELINE. PROVIDE HOSES, PUMPS, TEMPORARY PIPES, DITCHES, ETC., AS REQUIRED TO DISPOSE OF FLUSHING WATER WITHOUT DAMAGE TO ADJACENT PROPERTIES. FLUSHING VELOCITIES SHALL BE AT LEAST 2.5 FPS. FOR LARGE DIAMETER PIPE WHERE IT IS IMPRACTICAL OR IMPOSSIBLE TO FLUSH THE PIPE AT 2.5 FPS VELOCITY, CLEAN THE PIPELINE IN PLACE FROM THE INSIDE BY BRUSHING AND SWEEPING, THEN FLUSH THE LINE AT A LOWER VELOCITY.

DISINFECTION

PIPELINES INTENDED TO CARRY POTABLE WATER SHALL BE DISINFECTED AND TESTED BY THE CITY BEFORE PLACING IN SERVICE. DISINFECTION PROCEDURES SHALL CONFORM TO AWWA C651 AS HEREINAFTER MODIFIED OR EXPANDED, AND THE REQUIREMENTS OF ANY GOVERNING AGENCY HAVING JURISDICTION. TREATED WATER SHALL BE RETAINED IN THE PIPELINE LONG ENOUGH TO DESTROY ALL NONSPORE-FORMING BACTERIA, OR AS DIRECTED BY THE ENGINEER. THE CONTRACTOR SHALL BE RESPONSIBLE TO OPERATE ALL NEW VALVES, HYDRANTS AND OTHER APPURTENANCES DURING DISINFECTION TO ASSURE THAT THE DISINFECTING MIXTURE IS DISPERSED INTO ALL PARTS OF THE LINE, INCLUDING DEAD ENDS, NEW SERVICES AND SIMILAR AREAS THAT OTHERWISE MAY NOT RECEIVE THE TREATED WATER. AFTER THE APPLICABLE RETENTION PERIOD, HEAVILY CHLORINATED WATER WILL BE FLUSHED FROM THE NEW WATER MAIN. AFTER FINAL FLUSHING AND BEFORE THE NEW MAIN IS CONNECTED TO THE DISTRIBUTION SYSTEM, TWO CONSECUTIVE SETS OF ACCEPTABLE SAMPLES, TAKEN AT LEAST 24 HOURS APART, SHALL BE COLLECTED FROM THE NEW MAIN.

THE CONTRACTOR SHALL PROVIDE TESTING LOCATIONS AS REQUIRED BY THE PLANS OR AS DIRECTED BY THE ENGINEER. A COMBINATION BLOWOFF AND SAMPLING TAP IS RECOMMENDED, BUT SAMPLES MAY BE TAKEN AT TAPPED SADDLE LOCATIONS PROVIDED THAT THE SADDLE IS USED FOR A SERVICE CONNECTION AT THE COMPLETION OF THE PROJECT. NO HOSE OR FIRE HYDRANT MAY BE USED IN THE COLLECTION OF SAMPLES. ALL SAMPLES SHALL BE TESTED FOR BACTERIOLOGICAL QUALITY IN ACCORDANCE WITH STANDARD METHODS FOR THE EXAMINATION OF WATER AND WASTEWATER, AND SHALL SHOW THE ABSENCE OF COLIFORM ORGANISMS. EACH TEST REQUIRES A MINIMUM 24 HOUR PERIOD FOR RESULTS.

SEQUENCE OF WORK

PHASE 1: RETROFIT SEWER
 INSTALL SEWER BYPASS AS NECESSARY
 INSTALL WATER-CLASS REPLACEMENT PIPE

PHASE 2: CONSTRUCT NEW WATER MAINS A&B
 INSTALL TAPPING SADDLE AND VALVE AT 0+00
 TAP EXISTING MAIN (BY CITY)
 CONSTRUCT LINE A 0+00 TO 0+15
 CONSTRUCT LINE A 0+30 TO 3+10
 CONSTRUCT LINE B 3+10 TO 12+24 *a.s.*
 INSTALL BLOWOFF ASSEMBLY ON EXISTING MAIN
 LEAK TEST AND DISINFECT LINES (1 DAY MIN)
 BACTERIOLOGICAL TEST (2 DAYS MIN)
 ACTIVATE LINE A @ 0+15
 TRANSFER SERVICES TO LINES A & B
 CONNECT LINE B @ 12+24 *a.s.*
 PLUG EXISTING VALVE
 REMOVE HYDRANTS
 CAP ABANDONED MAIN

PHASE 3: RETROFIT STORM
 INSTALL WATER-CLASS REPLACEMENT PIPE

PHASE 4: RESTORE ROADWAY

DESIGNED BY	S.M.	SCALE	1"=100' (11x17)
DRAWN BY	S.M.	DATE	May 2014
CHECKED BY	B.H.	DRAWING NO.	stepplan.dwg
JOB NO.		SHEET	5 of 5

WATER DEPARTMENT
 PHASING PLAN
 22nd Avenue & 1st Street
 Water Main Replacement



CITY OF LEWISTON
 PUBLIC WORKS DEPARTMENT
 ENGINEERING SERVICES
 25 D STREET LEWISTON, ID 83501
 (208) 748-5916

