

UTILITY LOCATION

THE LOCATIONS OF UNDERGROUND UTILITIES REPRESENTED ON THIS DRAWING HAVE BEEN DETERMINED FROM A FIELD SURVEY AND FROM RECORDS OBTAINED FROM THE VARIOUS UTILITY COMPANIES. THE NUMBER AND LOCATIONS OF ALL UNDERGROUND UTILITIES SHOWN ARE FOR INFORMATIONAL PURPOSES ONLY. FOR YOUR SAFETY, STATE LAW REQUIRES THAT YOU CALL THE LOCAL "ONE-CALL" UNDERGROUND UTILITY LOCATING CENTER AT LEAST TWO WORKING DAYS BEFORE BEGINNING ANY EXCAVATION: 1-800-342-1585

"CALL BEFORE YOU DIG"

UTILITY CONTACTS

CALL BEFORE YOU DIG	1-800-342-1585
AVISTA UTILITIES	1-208-798-1473
CABLE ONE	1-208-746-3325
CENTURY LINK	1-208-798-0607
CITY OF LEWISTON PUBLIC WORKS	1-208-746-3671

- SEWER NOTES:**
- 1) ALL FLOOR DRAINS AND WASTE PLUMBING FROM SERVICE AREA 107, WASH BAY 108, AND SERVICE WHEEL CLOSET 116 ARE TO BE PIPED THROUGH A SEPARATE LINE DIRECTLY TO THE OIL/SAND WATER SEPARATOR PRIOR TO CONNECTING TO PRIMARY SEWER SERVICE LINE.
 - 2) 1000 GALLON OIL/SAND WATER SEPARATOR PER CITY OF LEWISTON STD. DWG. NO. 1-2. BASIS OF DESIGN: WILBERT PRECAST 1627OWTEI.
 - 3) SEWER SERVICE LINES SHALL HAVE MINIMUM SLOPE OF 1/8"/FOOT (RECOMMENDED 1/4"/FOOT).
 - 4) INSTALL TRAFFIC RATED CLEANOUT ON SEWER SERVICE LINE WITHIN 2' OF BUILDING (TYP OF BOTH LINES).

NOTE: USE CITY STANDARD FOR TRENCH BACKFILL FOR PUBLIC UTILITIES AND WITHIN RIGHT-OF-WAY AND STORMWATER UTILITY EASEMENT. TRENCH MATERIAL SHALL NOT HAVE ANY ROCK LARGER THAN 3".

- NOTES:**
- 1) MAINTAIN MINIMUM 36" CLEARANCE EACH BETWEEN PIV, FDC, HYDRANT AND ANY OTHER OBSTRUCTIONS.
 - 2) CONTRACTOR SHALL COORDINATE WITH THE CITY ON THE TIMING OF SERVICE LINE TRENCHING TO THE WATER MAIN IN ORDER TO ALLOW CITY TO USE SAME TRENCH AT THE SAME TIME FOR INSTALLATION OF THE FIRE HYDRANT.

PROFESSIONAL ENGINEER
REGISTERED
STATE OF IDAHO
DAVID L. WITTHUIS

SEWER SERVICE
ASBUIL-13/26715

REVISIONS
 1. 10/02/12
 2. 10/05/12
 3. 10/18/12

DATE: 08/27/2012
 DRAWN BY: HRC
 CHECKED BY: LHK
 DPW PRJ. NO. 1076
 ARCH. PRJ. NO. 1076

CONSULTANTS

 TD&H Engineering

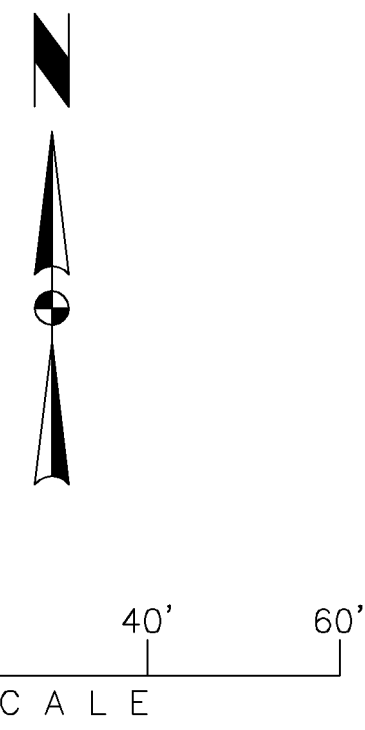
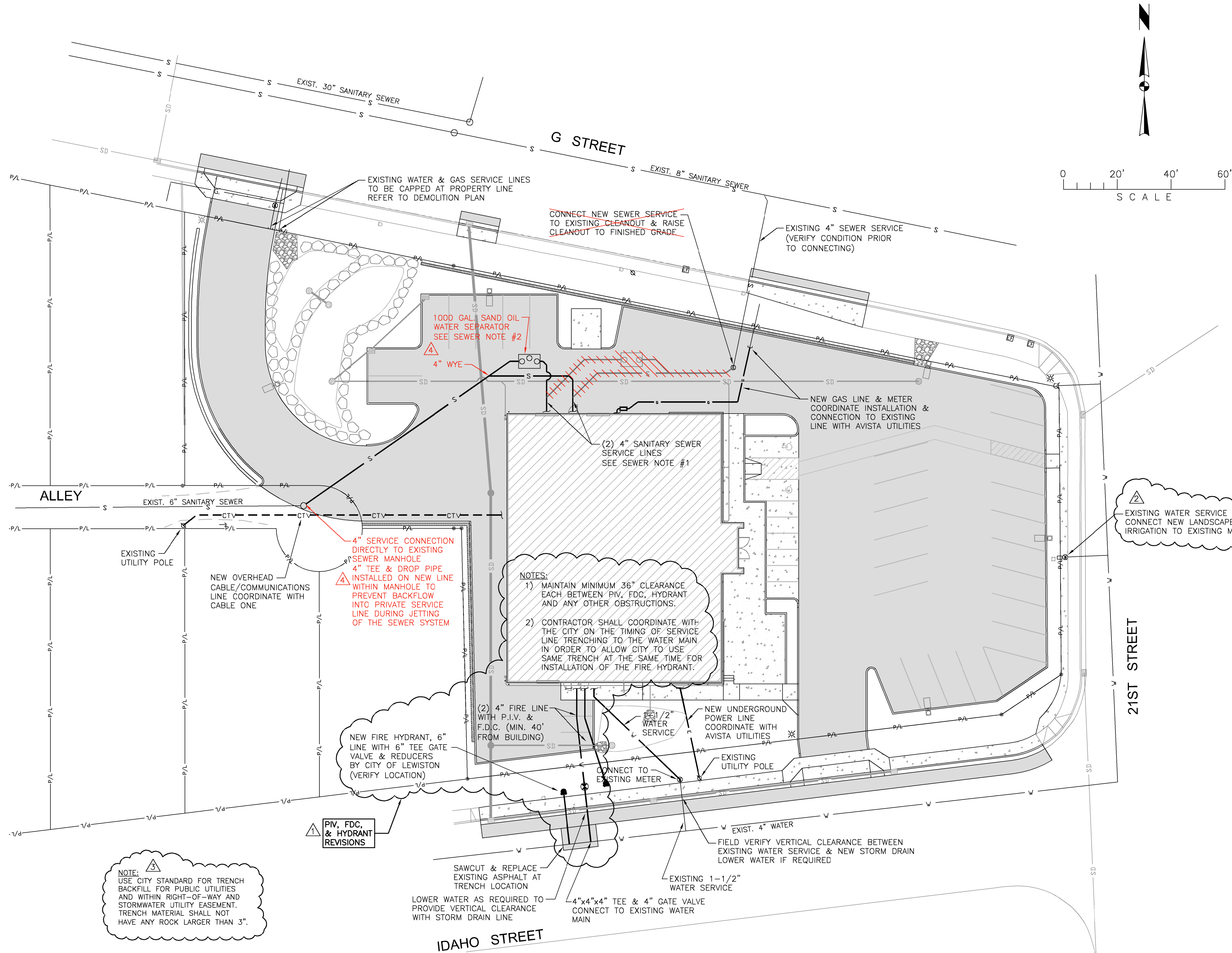
CASTELLAW ♦ KOM ♦ ARCHITECTS

LEWISTON, IDAHO
 850 MAIN STREET
 OFFICE (208) 746-0183 ♦ FAX (208) 746-7267

PROJECT
 HELLS CANYON
 HARLEY-DAVIDSON
 306 21ST STREET
 LEWISTON, IDAHO

DRAWING
 UTILITY PLAN &
 UTILITY DETAILS

SHEET
C3.0



UTILITY LOCATION

THE LOCATIONS OF UNDERGROUND UTILITIES REPRESENTED ON THIS DRAWING HAVE BEEN DETERMINED FROM A FIELD SURVEY AND FROM RECORDS OBTAINED FROM THE VARIOUS UTILITY COMPANIES. THE NUMBER AND LOCATIONS OF ALL UNDERGROUND UTILITIES SHOWN ARE FOR INFORMATIONAL PURPOSES ONLY. FOR YOUR SAFETY, STATE LAW REQUIRES THAT YOU CALL THE LOCAL "ONE-CALL" UNDERGROUND UTILITY LOCATING CENTER AT LEAST TWO WORKING DAYS BEFORE BEGINNING ANY EXCAVATION: 1-800-342-1585

"CALL BEFORE YOU DIG"

UTILITY CONTACTS

CALL BEFORE YOU DIG	1-800-342-1585
AVISTA UTILITIES	1-208-798-1473
CABLE ONE	1-208-746-3325
CENTURY LINK	1-208-798-0607
CITY OF LEWISTON PUBLIC WORKS	1-208-746-3671

- SEWER NOTES:**
- 1) ALL FLOOR DRAINS AND WASTE PLUMBING FROM SERVICE AREA 107, WASH BAY 108, AND SERVICE WTR TO CLOSET 116 ARE TO BE PIPED THROUGH A SEPARATE LINE DIRECTLY TO THE OIL/SAND WATER SEPARATOR PRIOR TO CONNECTING TO PRIMARY SEWER SERVICE LINE.
 - 2) 1000 GALLON OIL/SAND WATER SEPARATOR PER CITY OF LEWISTON STD. DWG. NO. 1-2. BASIS OF DESIGN: WILBERT PRECAST 1627OWTEI.
 - 3) SEWER SERVICE LINES SHALL HAVE MINIMUM SLOPE OF 1/8"/FOOT (RECOMMENDED 1/4"/FOOT).
 - 4) INSTALL TRAFFIC RATED CLEANOUT ON SEWER SERVICE LINE WITHIN 2' OF BUILDING (TYP OF BOTH LINES).

NOTE: USE CITY STANDARD FOR TRENCH BACKFILL FOR PUBLIC UTILITIES AND WITHIN RIGHT-OF-WAY AND STORMWATER UTILITY EASEMENT. TRENCH MATERIAL SHALL NOT HAVE ANY ROCK LARGER THAN 3".

- NOTES:**
- 1) MAINTAIN MINIMUM 36" CLEARANCE EACH BETWEEN PIV, FDC, HYDRANT AND ANY OTHER OBSTRUCTIONS.
 - 2) CONTRACTOR SHALL COORDINATE WITH THE CITY ON THE TIMING OF SERVICE LINE TRENCHING TO THE WATER MAIN IN ORDER TO ALLOW CITY TO USE SAME TRENCH AT THE SAME TIME FOR INSTALLATION OF THE FIRE HYDRANT.

PROFESSIONAL ENGINEER
REGISTERED
STATE OF IDAHO
DAVID L. WITTHAUS

SEWER SERVICE
ASBUIL-13/26715

REVISIONS
 1. 10/02/12
 2. 10/05/12
 3. 10/18/12

DATE: 08/27/2012
 DRAWN BY: HRC
 CHECKED BY: LHK
 DPW PRJ. NO. 1076
 ARCH. PRJ. NO. 1076

CONSULTANTS

 TD&H Engineering

ARCHITECTS
 CASTELLAW ♦ KOM
 850 MAIN STREET
 LEWISTON, IDAHO
 OFFICE (208) 746-0183 ♦ FAX (208) 746-7267

PROJECT
 HELLS CANYON
 HARLEY-DAVIDSON
 306 21ST STREET
 LEWISTON, IDAHO

DRAWING
 UTILITY PLAN &
 UTILITY DETAILS

SHEET
 C3.0