

SOUTHGATE PLAZA - PHASE II PARKING LOT & FRONTAGE IMPROVEMENTS

CIVIL CONSTRUCTION PLANS



CONTACTS

OWNER
 ALEXANDER INVESTORS
 PO BOX 448
 MONTVILLE, NJ 07045
 745-216-8982

ARCHITECT
 MY ARCHITECT
 504 MAIN ST. SUITE 480
 LEWISTON, ID 83501
 208-743-5902

GEOTECHNICAL SERVICES
 ALLWEST TESTING & ENGINEERING, LLC
 2705 E. MAIN STREET
 LEWISTON, IDAHO

UTILITY PROVIDERS

SANITARY SEWER	LOSD (Urban Wessels)	208-791-9346
WATER	L.O.I.D. (Barney Metz)	208-746-8235
POWER	AVISTA (Colby Witters)	509-780-1475
TELECOM.	CENTURY LINK (Julio Mendez)	208-798-8380
CABLE T.V.	CABLEONE (Tom Donahue)	208-791-5032



LEGEND

— San — San —	PROPOSED SAN. SEWER	— San — San —	EXISTING SAN. SEWER
— SD — SD —	PROPOSED STORM SEWER	— SD — SD —	EXISTING STORM SEWER
— W — W —	PROPOSED WATER LINE	— W — W —	EXISTING WATER LINE
— F — F —	PROPOSED FIRE PROTECTION	— F — F —	EXISTING FIRE PROTECTION
— X — X —	PROPOSED FENCE LINE	— OHE — OHE —	EXISTING OVERHEAD ELECTRICAL LINE
⊞	PROPOSED CATCH BASIN	— UGE — UGE —	EXISTING UNDERGROUND ELECTRICAL LINE
⊙	PROPOSED MANHOLE	— X — X —	EXISTING FENCE LINE
⊞	PROPOSED GATE VALVE	⊞	EXISTING CATCH BASIN
⊙	PROPOSED FIRE HYDRANT	⊙	EXISTING MANHOLE
▶	PROPOSED THRUST BLOCK	⊞	EXISTING GATE VALVE
XXXX	PROPOSED CONTOUR LINE	⊙	EXISTING FIRE HYDRANT
XXXX	PROPOSED SPOT ELEVATION	⊞	EXISTING THRUST BLOCK
— — — —	PROPOSED CENTERLINE	⊙	EXISTING WATER METER
— — — —	PROPOSED EASEMENT LINE	⊙	EXISTING POWER POLE
— P/L —	PROPERTY LINE	— XXXX —	EXISTING CONTOUR LINE
— — — —	PROJECT BOUNDARY	XXXX	EXISTING SPOT ELEVATION
— — — —	SILT FENCE	— P/L —	EXISTING UTILITY
		⊞	EXISTING PROPERTY LINE
		⊞	EXISTING CENTERLINE MONUMENT

CITY INSPECTION CHECKLIST

ITEM	MATERIAL	TEST / STANDARD	ACCEPTANCE	TEST FREQUENCY	INSPECTOR/CITY	DATE	INITIAL
1. ALL UTILITY TRENCHES & STRUCTURES							
TRENCH SUBGRADE	Native (8" to 8" Lifts Max.)	Moisture Density Relationship of Soils (AASHTO T 180) (a-Place Density and Moisture Content (AASHTO 310 Method B))	80% Max. Dry Density	One in-place density test every lift per 100 linear feet. If project is less than 100 linear feet, one in-place density test per day OR per lift (whichever test frequency is more restrictive)			
PIPE BEDDING	3/4" minus Crushed Aggregate (8" to 8" Max. Lift) (Current ITD Spec 703.04) OR 5/8" minus Crushed Aggregate (8" to 8" Max. Lift) (Current WDOTM1-10 Spec 8-03.9)	Moisture Density Relationship of Soils (AASHTO T 180) (a-Place Density and Moisture Content (AASHTO 310 Method B))	95% Max. Dry Density	One in-place density test every lift per 100 linear feet. If project is less than 100 linear feet, one in-place density test per day OR per lift (whichever test frequency is more restrictive). Test up 8" of 12" cover			
1st FOOT [12"] OF FILL OVER PIPE	3/4" minus Crushed Aggregate (8" to 8" Max. Lift) (Current ITD Spec 703.04) OR 5/8" minus Crushed Aggregate (8" to 8" Max. Lift) (Current WDOTM1-10 Spec 8-03.9)	Moisture Density Relationship of Soils (AASHTO T 180) (a-Place Density and Moisture Content (AASHTO 310 Method B))	95% Max. Dry Density	One in-place density test every lift per 100 linear feet. If project is less than 100 linear feet, one in-place density test per day OR per lift (whichever test frequency is more restrictive)			
TRENCH BACKFILL UNDER PROPOSED ROAD & SIDEWALK	3/4" minus Crushed Aggregate (8" to 8" Max. Lift) (Current ITD Spec 703.04) OR 5/8" minus Crushed Aggregate (8" to 8" Max. Lift) (Current WDOTM1-10 Spec 8-03.9)	Moisture Density Relationship of Soils (AASHTO T 180) (a-Place Density and Moisture Content (AASHTO 310 Method B))	95% Max. Dry Density	One in-place density test every lift per 100 linear feet. If project is less than 100 linear feet, one in-place density test per day OR per lift (whichever test frequency is more restrictive)			
TRENCH BACKFILL UNDER EASEMENT / NOT TRAFFICED AREA	Native Soil Free of Unstable Material w/ 4" Max. Particle Size (8" Max. Lift)	Moisture Density Relationship of Soils (AASHTO T 180) (a-Place Density and Moisture Content (AASHTO 310 Method B))	80% Max. Dry Density	One in-place density test every lift per 100 linear feet. If project is less than 100 linear feet, one in-place density test per day OR per lift (whichever test frequency is more restrictive)			
2. STORM DRAIN MAINS							
CONCRETE OR PVC WATER MAIN	Per Manufacturer's Instructions	Per Manufacturer's Instructions	Certified & Visual by City	Per Plan	Certified & Visual by City		
ALIGNMENT AND GRADE	N/A	N/A	Per Plan	Each Point			
JOINTS (Deflection/Proper Pipe Embedment)	N/A	Per Manufacturer's Instructions	Per Plan	Each Point			
PRESSURE TEST	N/A	4 PSI for 15 Minutes, 1/2 PSI Drop	If Required by City Engineer	Between Access Holes			
MANHOLES	Concrete	City Standard	N/A	Per Plan			
VIDEO INSPECTION	N/A	No Penetrations, Cracks or Disjoints, No Bellies > 0.02"	Public Works Policy No 2010-2	Between Access Holes			
3. WATER MAINS							
CONCRETE OR PVC WATER MAIN	AWWA C-151, C-300, C-305 (Class as Req'd)	AWWA C-300, AWWA C-305	Certified & Visual by City	Per Plan	Certified & Visual by City		
ALIGNMENT AND GRADE	N/A	AWWA C-300, AWWA C-305	Per Plan	Each Point			
JOINTS (Deflection/Proper Pipe Embedment)	N/A	Per Approved Plans/ City Std Dwg # 4-4	Certified & Visual by City	Each Point			
THRUST BLOCKS	Concrete, 2500 PSI Min	Per Approved Plans/ City Std Dwg # 4-4		Each Point			
HYDROSTATIC PRESSURE	N/A	2 Hrs, NTE Allowable Leakage Per AWWA C-400, AWWA C-305		15% Working Pressure OR 1 1/2 times the Working Pressure in the Water System			
CHLORINATION/BACTERIA	N/A	AWWA C-367	City of Lewiston	Residual Testing, two negative testing samples 24 hours apart			
4. WASTEWATER MAINS							
CONCRETE OR PVC WATER MAIN	Per Manufacturer's Instructions	Per Manufacturer's Instructions	Per Plan	Per Plan			
ALIGNMENT AND GRADE	N/A	N/A	Per Plan	Each Point			
JOINTS (Deflection/Proper Pipe Embedment)	N/A	Per Manufacturer's Instructions	Per Plan	Each Point			
MANHOLES	Concrete	City Standard	Per Plan	Each Point			
PRESSURE TEST	N/A	4 PSI for 15 Minutes, 1/2 PSI Drop	Between Access Holes	Between Access Holes			
VIDEO INSPECTION	N/A	No Penetrations, Cracks or Disjoints, No Bellies > 0.02"	Public Works Policy No 2010-2	Between Access Holes			
5. CONCRETE CURB, GUTTER & SIDEWALK							
CONCRETE	CLASS 350 - Approved Mix Design Required with Min Cement Content of 550 Lb/Cy, Max Water/Cement Ratio of .44, a VFA, and an AEA	Refer to 220 comprehensive design or concrete AASHTO T-232 Making Test Specimens AASHTO T-119 Slump of Hydraulic Cement Concrete AASHTO T-155 Air Content of Freshly Mixed Concrete AASHTO T-209 Temperature of Freshly Mixed Concrete WAGTC T-8.3 Sampling Freshly Mixed Concrete	Min 28 day Compressive Strength = 3500 psi, Water/Cement Ratio shall be 0.44 Max. Slump = 5 inches Air Content Percent = 8.0% ± 1.5 Temperature = 60°F ± 30°F	1 of Each Test Minimum per Day, or 1 of Each Test per 50 CY			
CRUSHED AGGREGATE BASE COURSE	3/4" minus Crushed Aggregate (4" Max. Lift) (Current ITD Spec 703.04) OR 5/8" minus Crushed Aggregate (4" Max. Lift) (Current WDOTM1-10 Spec 8-03.9)	Moisture Density Relationship of Soils (AASHTO T 180) (a-Place Density and Moisture Content (AASHTO 310 Method B))	95% Max. Dry Density	1 Tests Per 500 Lf-Min 2 Tests			
ALIGNMENT AND GRADE	N/A	Visual	Per 10' Section	Per 10' Section	City Approval		
JOINT SEALANT/NEEDS STRAIGHTNESS	N/A	Visual	Per 10' Section	Per 10' Section			
FINISH	N/A	Visual	Per 10' Section	Entire Surface Area			
6. ASPHALTIC CONCRETE PAVING							
HOT MIX ASPHALT	ITD Class B 10" - Aggr'd Mix Design Required (Current ITD Spec 461.70, and 703.05)	AASHTO T 198, Method C; Specific Gravity of HMA AASHTO T 209, Test for Maximum Specific Gravity WAGTC TM-8, In-Place Density of Bituminous Mixes	92%-95% Max. Theoretical Density	1 Test Per 750 Ton-Min 1 Test			
CRUSHED AGGREGATE BASE COURSE*	Same test requirements as under 6. Concrete Curb, Gutter & Sidewalk						
7. EROSION & SEDIMENT CONTROLS							
	Per Approved Plans	Per Plan and Manufacturer's Instructions		100% or After Every Rainfall			
8. TRAFFIC CONTROL							
	Per Approved Plans	Current Adopted MUTCD/TSSA		Continuous			
9. RECORD DRAWINGS							
10. ENGINEER'S CERTIFICATION							
Date Last Revised September 2016							

PUBLIC IMPROVEMENT QUANTITIES

- Mobilization, Insurance, Etc. Lump Sum
- Existing Pavement Removal & Grading Lump Sum
- 10" Base Course 675 Sq. Yds
- 3" A.C. Pavement 550 Sq. Yds
- Conc. High Back Curb 670 L.F.
- 8" Diameter PVC San. Sewer Pipe 230 L.F.
- San. Sewer Manholes 5 V.F.
- 8" C900 PVC Water Main 260 L.F.
- 4.5' Conc. Sidewalk 2190 S.F.
- Conc. Driveway Approaches (Std. Dwg. No. 2-16) 3 Each
- Conc. Driveway Approach (Std. Dwg. No. 2-18) 1 Each
- Fire Hydrants 2 Each
- Stormwater Inlet Aprons 3 Each
- Stormwater Infiltration Trenches 67 L.F.
- Erosion Control & SWPPP Inspections Lump Sum
- Traffic Control Lump Sum

ON-SITE IMPROVEMENT QUANTITIES

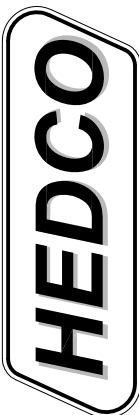
- Mobilization, Insurance, Etc. Lump Sum
- Existing Pavement Removal & Grading Lump Sum
- 8" Base Course 7580 Sq. Yds
- 3" A.C. Pavement 7010 Sq. Yds
- Conc. High Back Curb 2730 L.F.
- Catch Basins 5 Each
- 15" Diameter PVC Storm Drain Pipe 425 L.F.
- 12" Diameter PVC Storm Drain Pipe 240 L.F.
- 10" Diameter PVC Storm Drain Pipe 125 L.F.
- 8" Diameter PVC Storm Drain Pipe 750 L.F.
- 6" Diameter PVC Storm Drain Pipe 330 L.F.
- Storm Sewer Manholes (Not Incl. Stormtech Sys.) 8 V.F.
- Conc. Sidewalk (Not Incl. Hardscape Adj. to Bldg.) 2980 S.F.
- Utilities Trenching and Conduit (400L.F.) Lump Sum
- Stormwater Inlet Aprons 2 Each
- Stormwater Infiltration Swale 35 L.F.
- Stormwater Infiltration Trench 520 Sq. Ft.
- Subsurface Stormwater Chamber System Lump Sum
- 4" Conc. Valley Gutter 4 Each
- Erosion Control & SWPPP Inspections Lump Sum

SHEET INDEX

- C1 NOTES & DETAILS
- C2 EXISTING SITE PLAN
- C3 SITE OVERVIEW
- C4 SITE DEVELOPMENT PLAN
- C5 SITE GRADING PLAN
- C6 LINDEN AVENUE FRONTAGE IMPROVEMENTS
- C7 STANDARD DETAILS
- C8 STANDARD DETAILS
- C9 STANDARD DETAILS

2016-02-19 BID/REVIEW SET - NOT FOR CONSTRUCTION

SOUTHGATE PLAZA - PHASE II
 PARKING LOT & FRONTAGE IMPROVEMENTS
 ALEXANDER INVESTORS
 LEWISTON, IDAHO

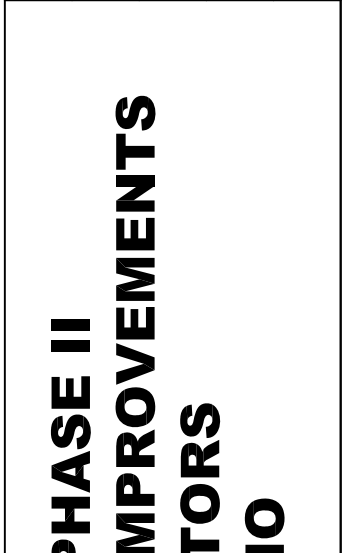


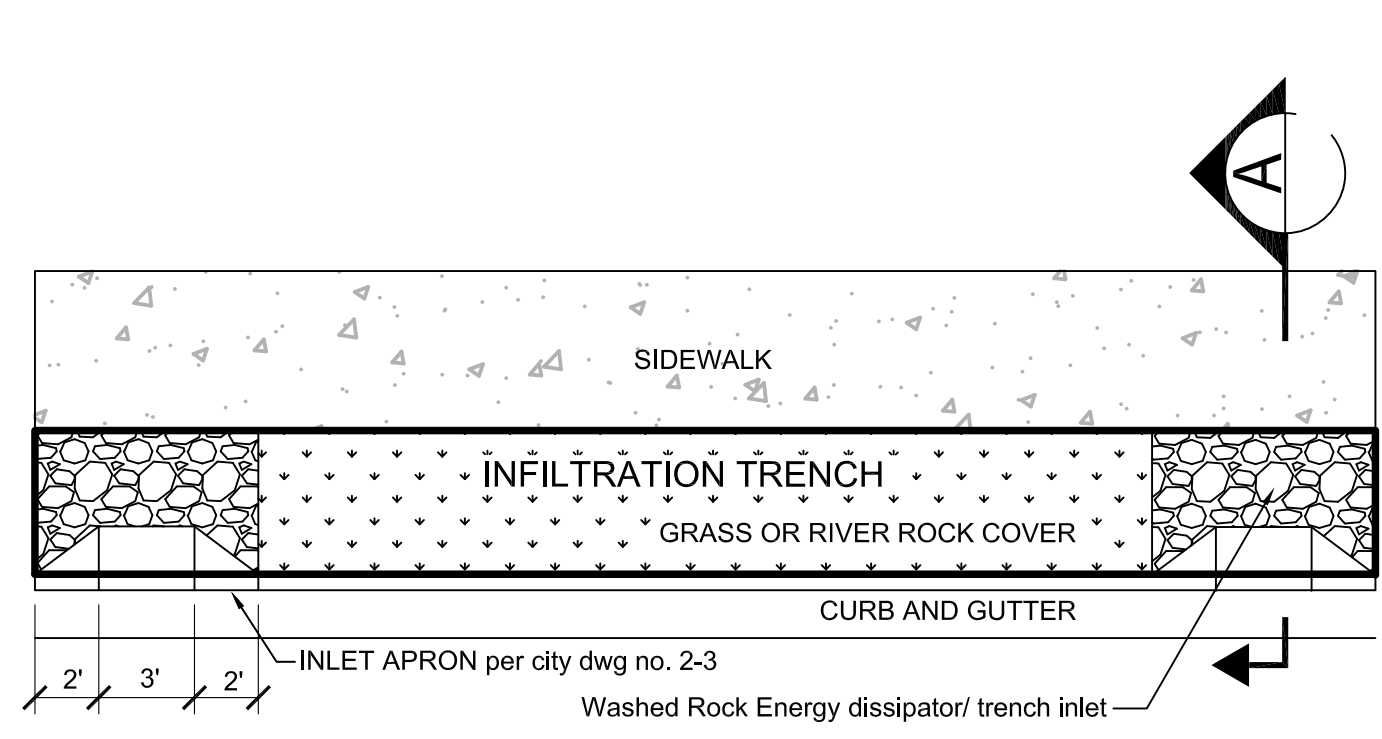
HAMMOND ENGINEERING & DEVELOPMENT CO.
 528 BRYDEN AVENUE LEWISTON, IDAHO 83501
 (208) 796-5422

SHEET
CO

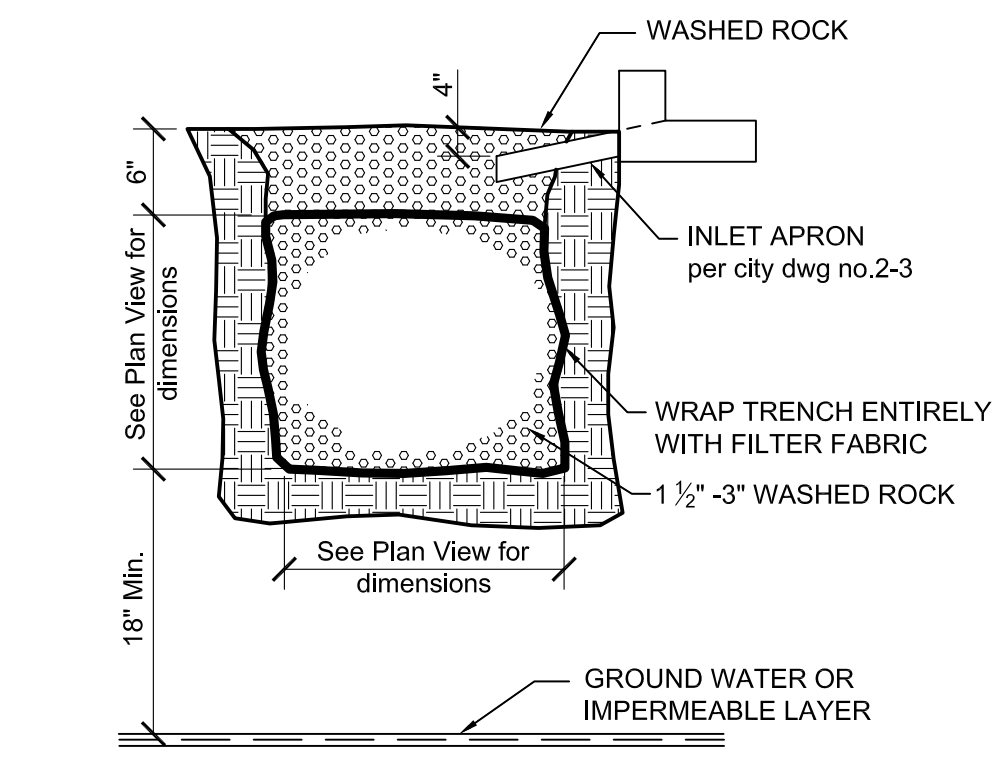
REV. LTR.	DATE	DESCRIPTION	CHECKED	APPRO.
A	02-19-16	See Revision Clouds		
B	02-20-16	Revised as per city Review Comments dated 5-18-16		

SCALE	SHEET SIZE	DRAWN BY	CHECKED BY	JOB #	SHEET #	DRAWING #
	D	MEE	JSH	1603	CO	1603-CO

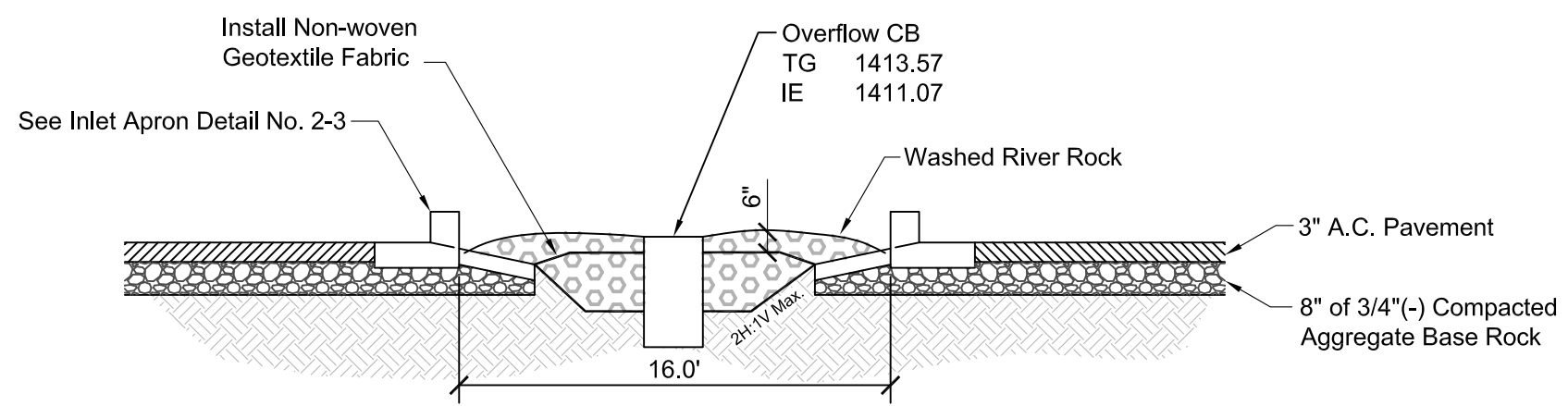




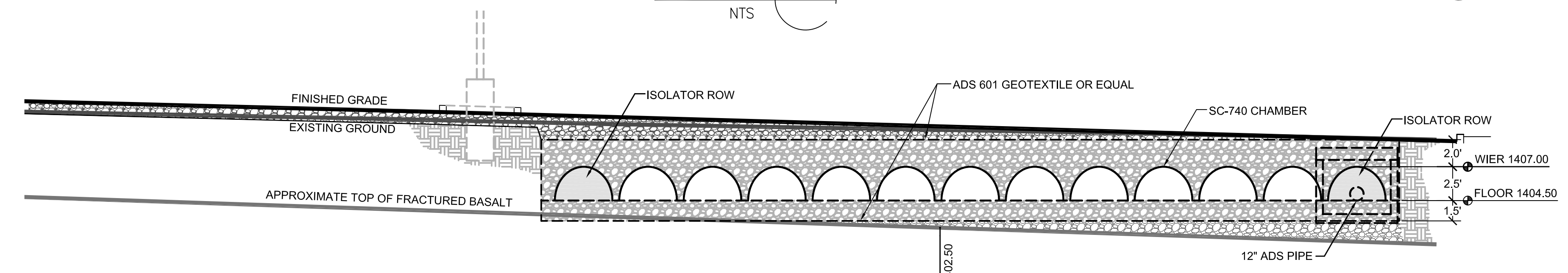
* If caliche or impermeable layer of soil is found under proposed infiltrators, penetration point shall be created and locations to be approved & inspected by City Engineer.



TYPICAL INFILTRATION TRENCH DETAIL
SECTION A
NTS

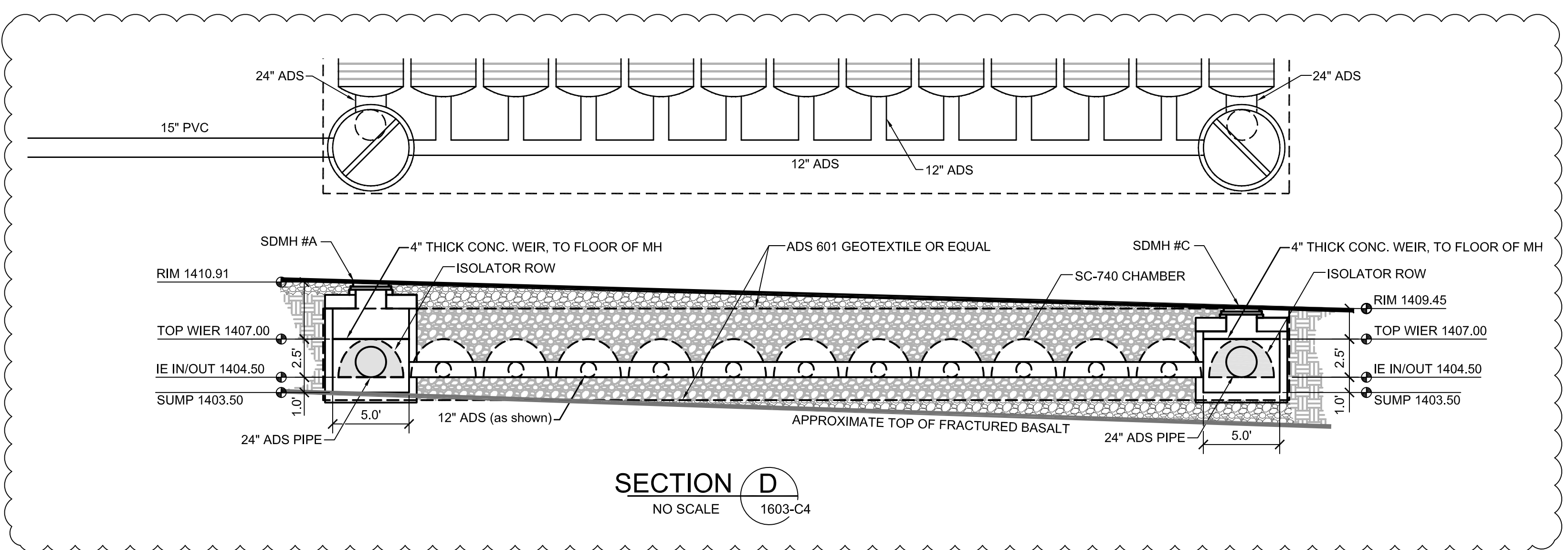


RETENTION SWALE
SECTION B
NO SCALE 1603-C4



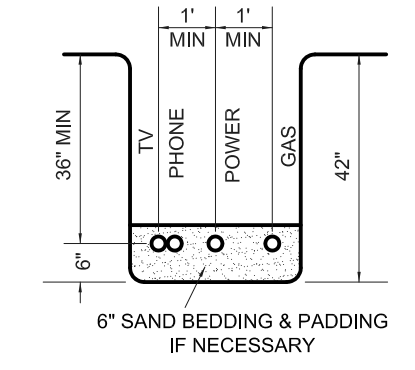
STORMTECH SUBSURFACE STORMWATER SYSTEM
SECTION C
NO SCALE 1603-C4

* SEE MANUFACTURER'S DETAILS AND SPECIFICATIONS FOR ADDITIONAL INFORMATION.

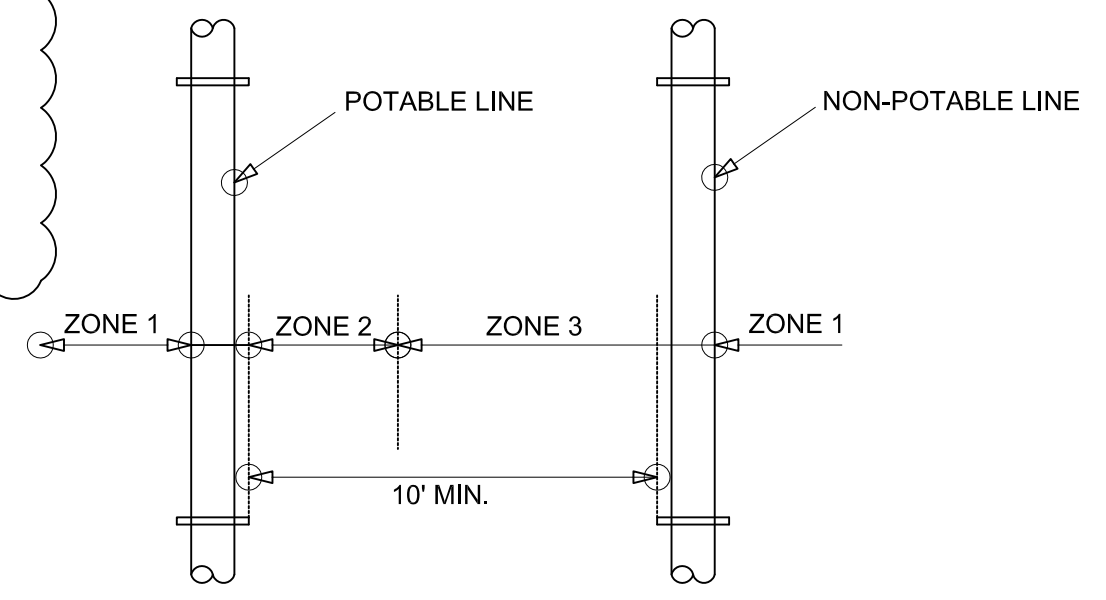


SECTION D
NO SCALE 1603-C4

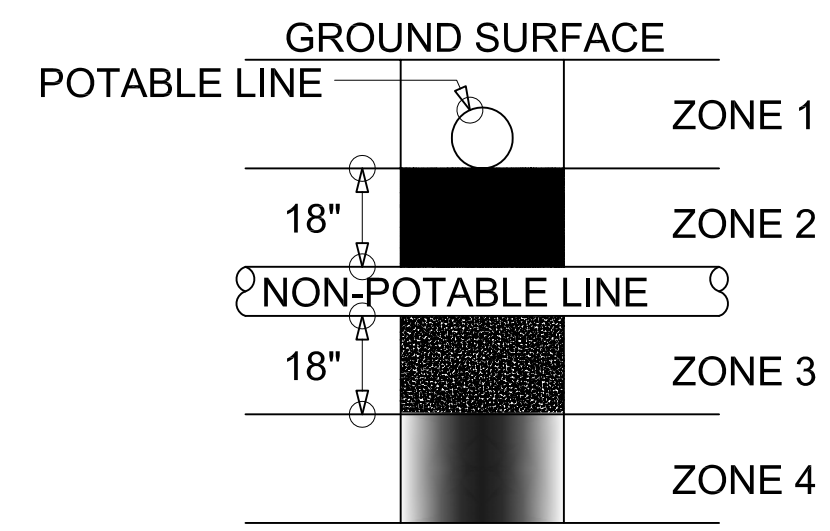
FRANCHISE UTILITIES TRENCH DETAIL



LINE SEPARATIONS



LINE CROSSINGS



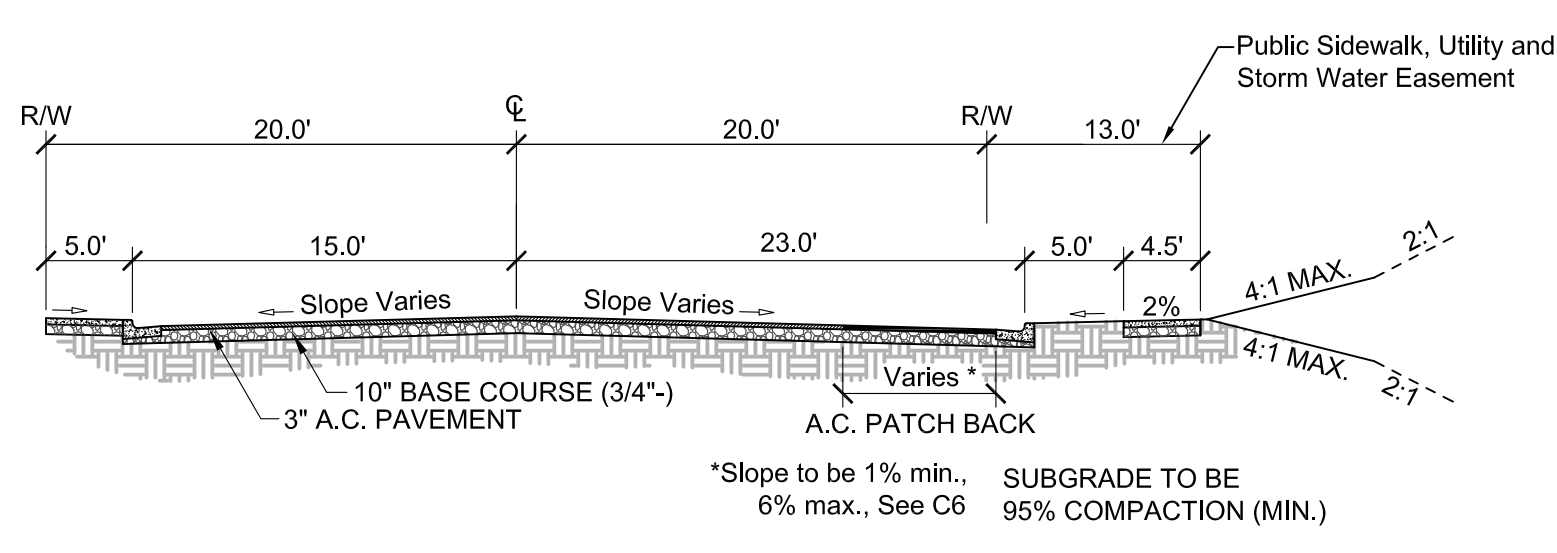
ZONE 1:
A) Potable Water and Non-potable Mains and Service Lines must be separated by at least 18 inches and

ZONE 2: Potable line < 18" over the top of Non-Potable line (Main and Services).
A) One full, uncut length of Non-Potable Water pipe must be centered on the crossing so that the joints are as far as possible from the Non-Potable line and either B)
Non-Potable line must be constructed to Potable water pipe standards and pressure tested for water tightness for a horizontal distance of 10 feet on both sides of crossing.

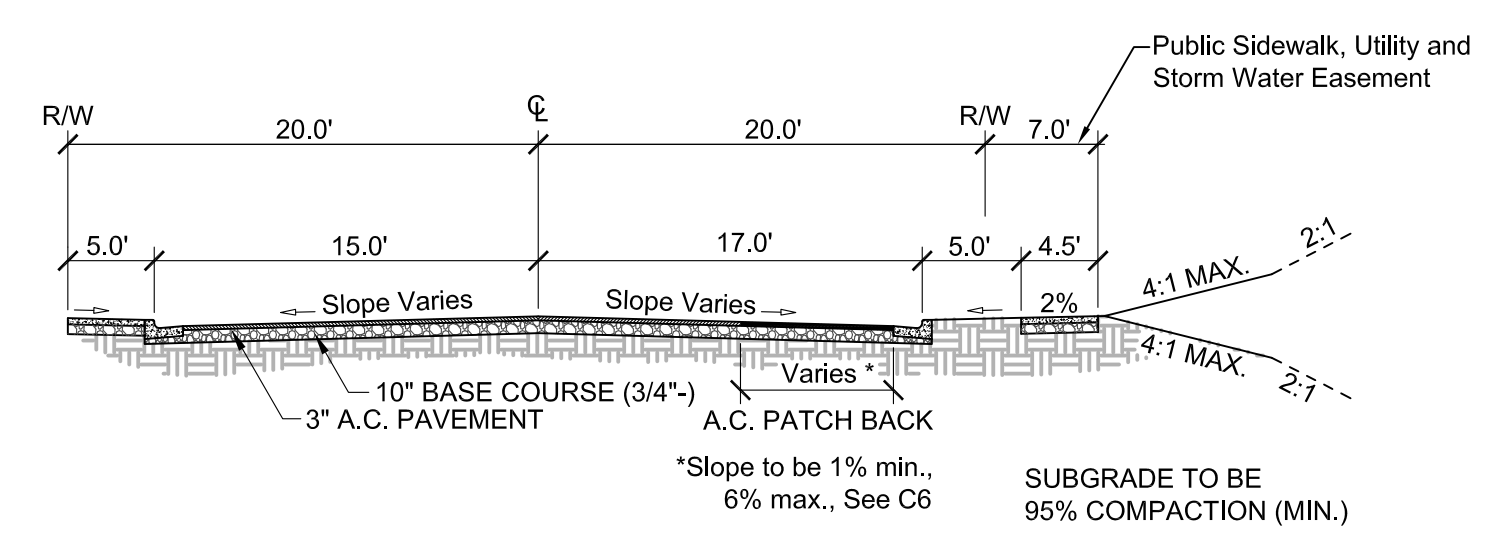
ZONE 3: Same requirements as Zone 2 except the Non-Potable line must also be supported above the crossing to prevent settling.

ZONE 4: Same requirements as Zone 1 except the Non-potable line must also be supported above the crossing to prevent settling.

Sewage mains shall have at least eighteen inches of clearance from Potable Water mains and Zones 2 and 3 placements are prohibited. Separation requirements also apply to Potable and Non-Potable service lines controlled by the system owner and extending to the property line, service meter, or cleanout. Refer to IDAPA 58.01.01.542.07: Idaho Rules for Public Drinking Water Systems and IDAPA 58.01.16.430.0 Idaho Wastewater Rules.



LOCAL RESIDENTIAL STREET
**MODIFIED STD. DWG. NO. 3-4
(LINDEN AVENUE 6+52 - 11+25)



LOCAL RESIDENTIAL STREET
**MODIFIED STD. DWG. NO. 3-4
(LINDEN AVENUE 6+02 - 6+52, 11+25 - 11+70)

NOTES:

- ALL EARTHWORK SHALL BE COMPACTED TO 95% OF AASHTO T-99 PROCTOR VALUE.
- ALL POTABLE WATER LINES RUNNING FROM MAIN TO METERS WILL BE 2" AND METERS WILL BE 1" TYP.
- SANITARY SEWERS SHALL HAVE 3.0' MIN. COVER & SERVICE LATERALS SHALL HAVE 2.0% MIN. GRADE. STORM DRAINS SHALL HAVE 2.0' MIN. COVER
- ALL PARKING & DRIVEWAY AREAS ARE TO BE PAVED WITH 2.5" A.C. & 8" AGGREGATE BASE ROCK OVER GEOTEXTILE FABRIC.
- ALL PARKING STALLS ARE TO BE PERMANENTLY MARKED WITH STRIPES AND SIGNS AT THE HANDICAP STALLS, TO LEWISTON CITY STANDARDS.
- ALL WORK DONE WITHIN CITY RIGHT OF WAY TO BE DONE IN ACCORDANCE WITH CITY STANDARDS.
- SANITARY SEWER PIPING AND MANHOLES SHALL BE FURNISHED AND INSTALLED IN ACCORDANCE WITH CITY OF LEWISTON STANDARDS.
- ALL AVISTA CONDUITS WILL BE SCHEDULE 40 GRAY ELECTRICAL CONDUIT (LARGE SWEEPS, LONG COUPLERS)
- A RIGHT-OF-WAY PERMIT SHALL BE OBTAINED THROUGH THE PUBLIC WORKS DEPARTMENT PRIOR TO ANY WORK WITHIN PUBLIC RIGHT-OF-WAY.
- SITE DISTANCES FOR ABUTTING PROPERTIES, DRIVEWAYS AND INTERSECTIONS SHALL BE MAINTAINED.
- EROSION AND DUST CONTROL MEASURES MUST BE USED DURING CONSTRUCTION TO REDUCE OR ELIMINATE BLOWING DUST, EXCESSIVE RUNOFF AND SOIL EROSION ACROSS PROPERTY LINES AND INTO STREET RIGHT-OF-WAY, AN TO ELIMINATE TRACKING SOIL AND MUD ONTO STREETS FROM CONSTRUCTION EQUIPMENT AND VEHICLES. THE CONTRACTOR IS RESPONSIBLE FOR STREET CLEANUP AT THE END OF EACH SHIFT.
- ALL CONSTRUCTION NOT SPECIFICALLY MENTIONED OR SHOWN SHALL CONFORM TO CITY ORDINANCES AND STANDARDS.

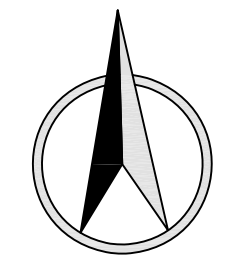
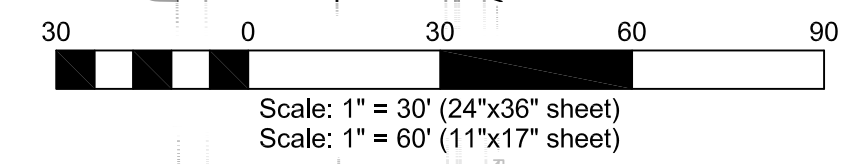
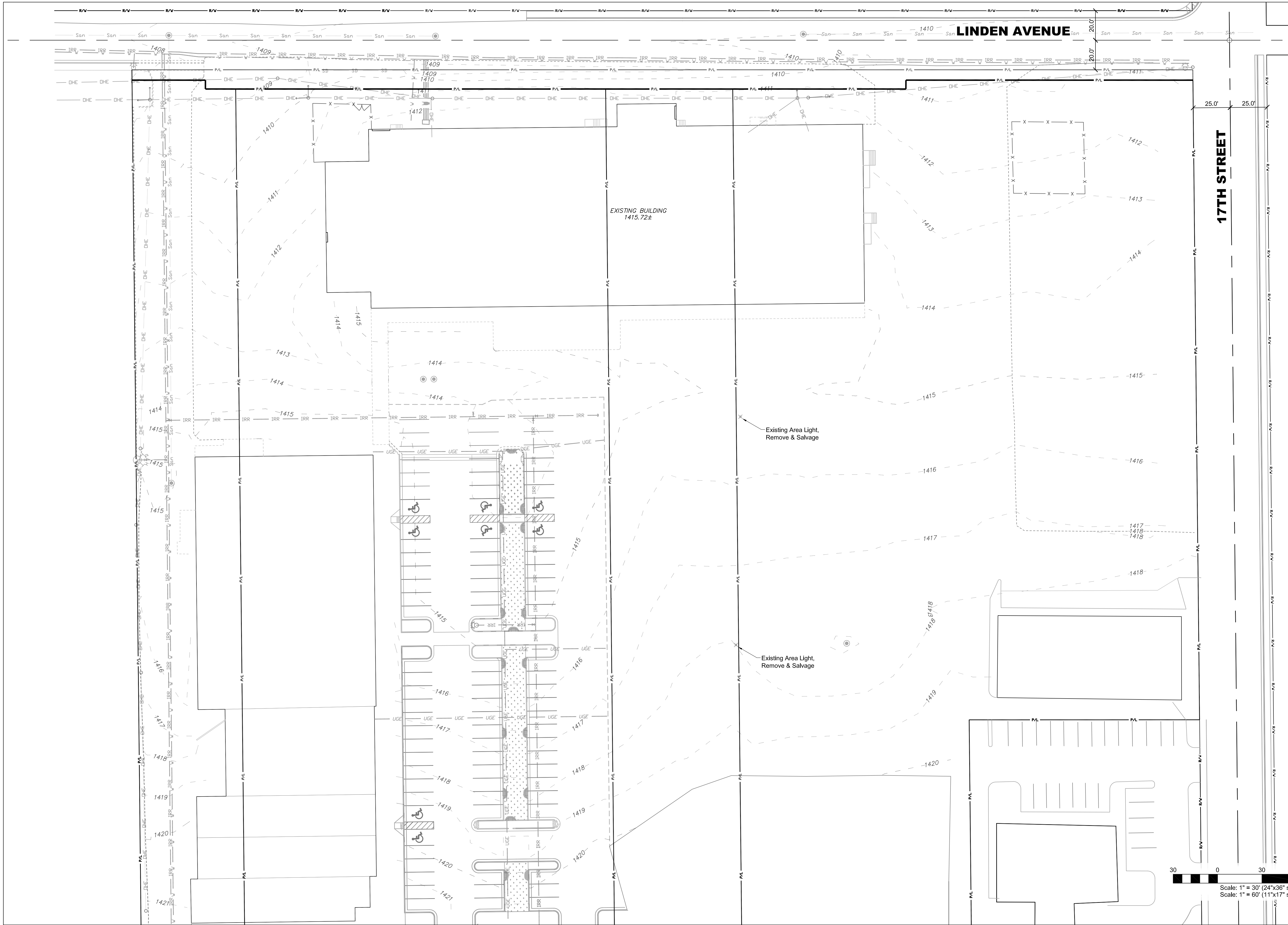
REV. DATE	DESCRIPTION	CHECKED	APPRO.
A 10-17-16	Add Subsurface Storm Sys. Detail		
B 10-20-16	Revised as per city Review. Comments dated 5-18-16		



SCALE	SHEET SIZE	DRAWN BY	CHECKED BY
	D	MEE	JSH
		DATE	JOB #
		10-10-16	1603
		SHEET	CO
			1603-C0

SOUTHGATE PLAZA - PHASE II
PARKING LOT & FRONTAGE IMPROVEMENTS
DETAILS & NOTES
ALEXANDER INVESTORS
LEWISTON, IDAHO





REVISION		CHECKED	APPRO.
REV.	DATE	DESCRIPTION	
LTR			
SHEET SIZE	D	CHECKED BY	JOB #
1"=30'		JSH	1603
DRAWN BY	DATE	SHEET	DRAWING #
MEE	02-10-16	C2	1603-C2

SOUTHGATE PLAZA - PHASE II

PARKING LOT & FRONTAGE IMPROVEMENTS

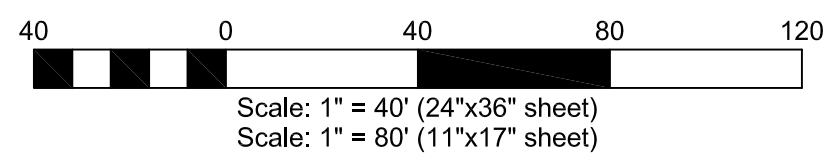
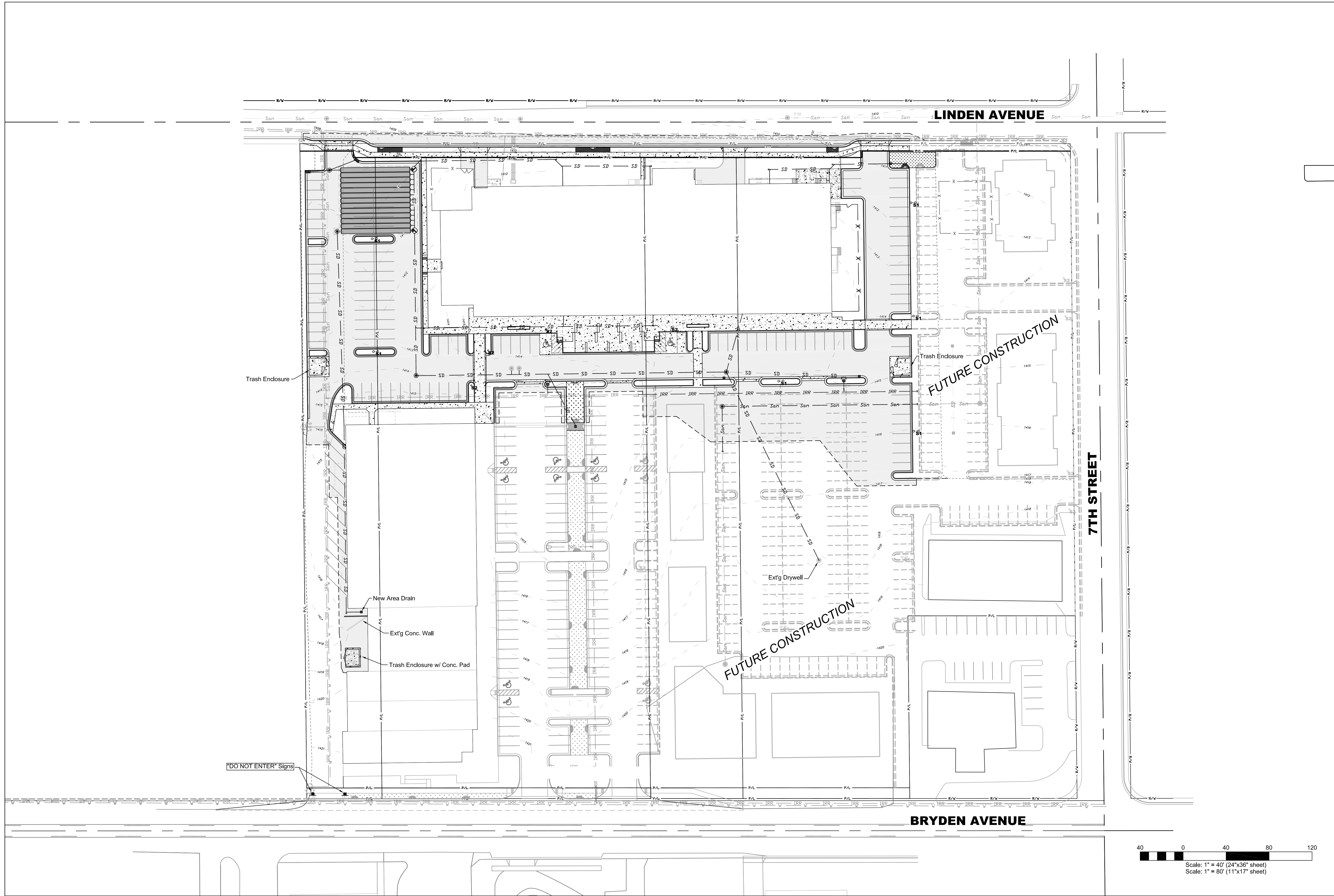
EXISTING SITE PLAN

ALEXANDER INVESTORS

LEWISTON, IDAHO

HAMMOND ENGINEERING & DEVELOPMENT CO.
529 BRYDEN AVENUE LEWISTON, IDAHO 83501
(208) 786-5422

SHEET	C2
-------	-----------



HEDCO
HAMMOND ENGINEERING & DEVELOPMENT CO.
529 BRYDEN AVENUE LEWISTON, IDAHO 83501
(208) 786-5422

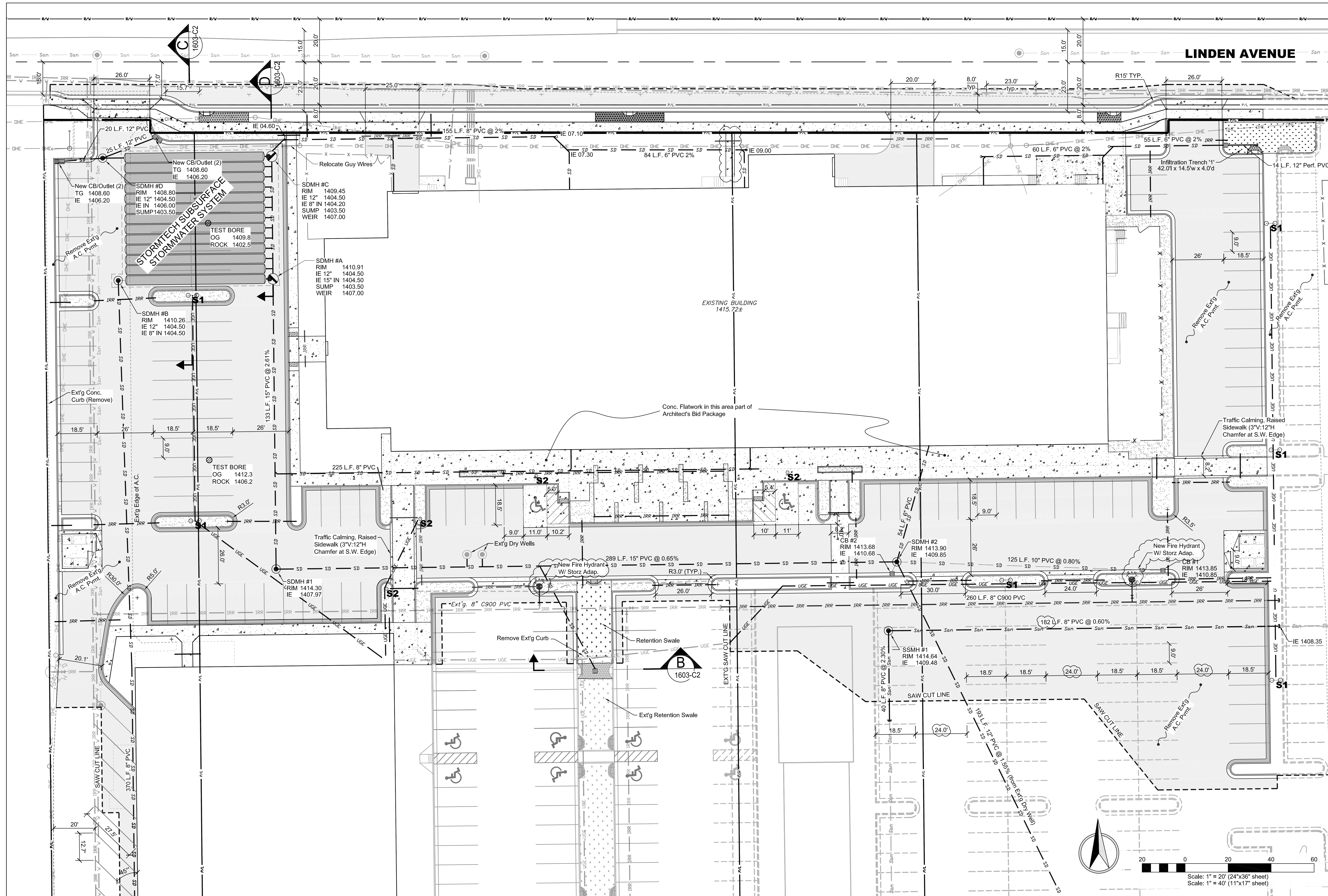
**SOUTHGATE PLAZA - PHASE II
PARKING LOT & FRONTAGE IMPROVEMENTS
SITE OVERVIEW**
ALEXANDER INVESTORS
LEWISTON, IDAHO

REV. LTR.	DATE	DESCRIPTION	CHECKED	APPR.

ENGINEER, LAND SURVEYOR
REGISTERED
#2107
S. SHAM
STATE OF IDAHO
2/10/16

SHEET SIZE: D
DRAWN BY: MEE
CHECKED BY: JSH
DATE: 02-10-16
JOB: 1603
SHEET: C3
DRAWING #: 1603-C3

SHEET C3



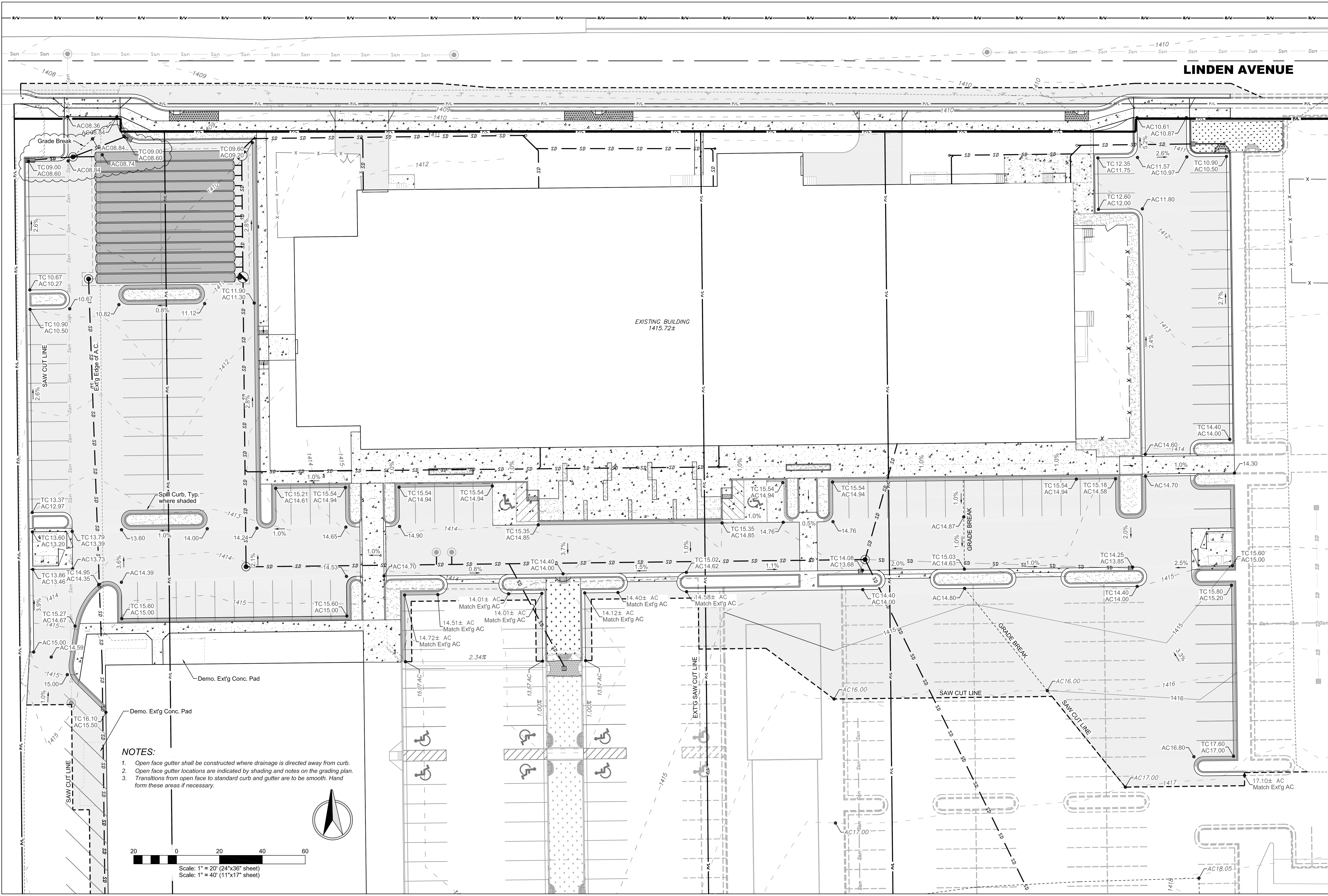
REV. DATE	DESCRIPTION	CHECKED	APPD.
A 02-19-16	See Revision Clauses		
B 02-20-16	Rev. as per City Review Comments; Hydrants related to front drive lake		

SCALE	1"=30'
DRAWN BY	MEE
CHECKED BY	JSH
DATE	02-10-16
JOB #	1603
SHEET	C4
DRAWING #	1603-C4

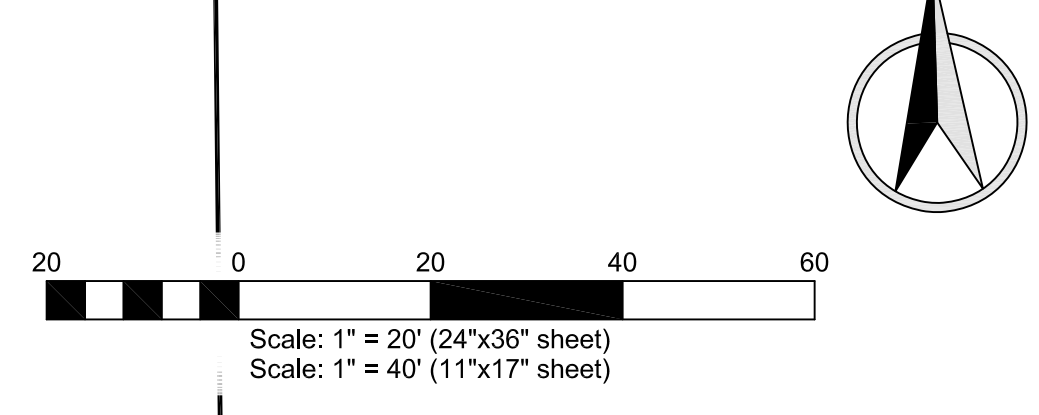
**SOUTHGATE PLAZA - PHASE II
PARKING LOT & FRONTAGE IMPROVEMENTS
SITE DEVELOPMENT PLAN
ALEXANDER INVESTORS
LEWISTON, IDAHO**

HEDCO
HAMMOND ENGINEERING & DEVELOPMENT CO.
529 BRYDEN AVENUE LEWISTON, IDAHO 83501
(208) 786-5422

SHEET **C4**



- NOTES:**
1. Open face gutter shall be constructed where drainage is directed away from curb.
 2. Open face gutter locations are indicated by shading and notes on the grading plan.
 3. Transitions from open face to standard curb and gutter are to be smooth. Hand form these areas if necessary.



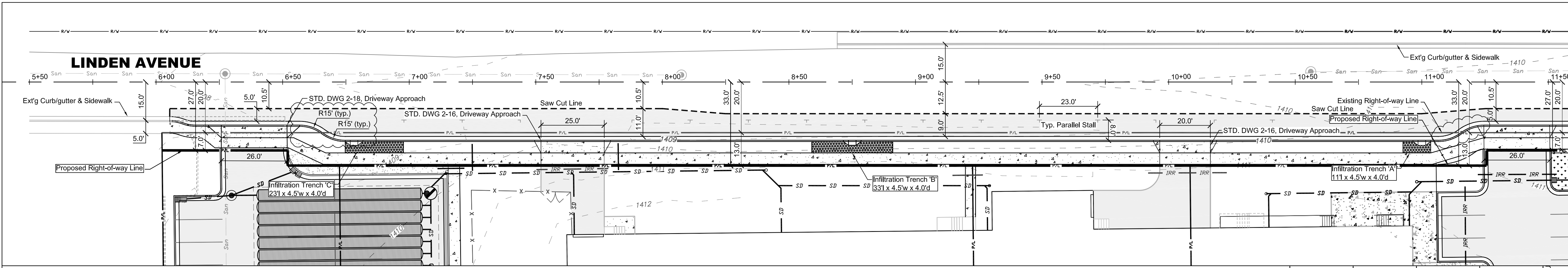
REVISION	DESCRIPTION	CHECKED	APPROVED
REV. DATE			
LTR.	A (02-19-16)	See Revision Charts	

SHEET SIZE	D
SCALE	1"=30'
DRAWN BY	MEE
CHECKED BY	JSH
DATE	02-10-16
JOB #	1603
SHEET	C5
DRAWING #	1603-C5

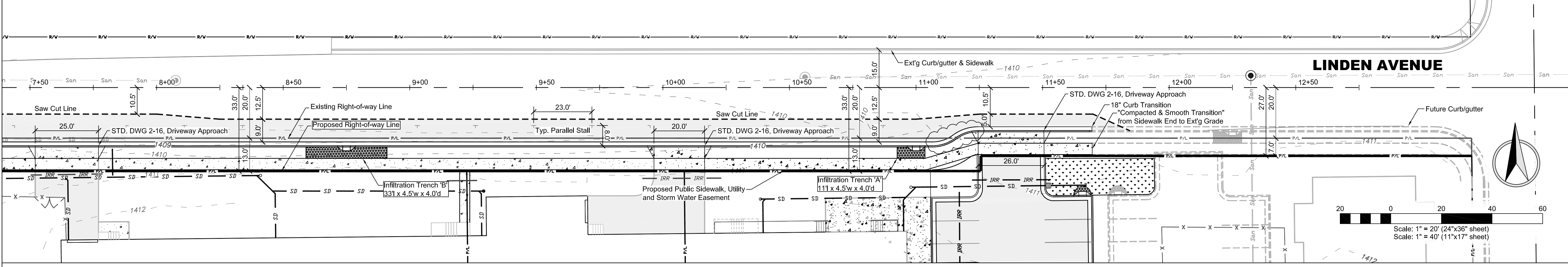
**SOUTHGATE PLAZA - PHASE II
PARKING LOT & FRONTAGE IMPROVEMENTS
SITE GRADING PLAN
ALEXANDER INVESTORS
LEWISTON, IDAHO**

HAMMOND ENGINEERING & DEVELOPMENT CO.
529 BRYDEN AVENUE LEWISTON, IDAHO 83501
(208) 750-5422

SHEET **C5**



5+50 1406.64 @ LIP/GUTTER 0.64%	5+75 1406.80 @ LIP/GUTTER 1.60%	6+00 1407.20 @ LIP/GUTTER 5.0' PATCHBACK @ 2.72%	6+25 1407.80 @ LIP/GUTTER 5.0' PATCHBACK @ 2.48%	6+50 1408.35 @ LIP/GUTTER 5.0' PATCHBACK @ 2.21%	6+75 1408.55 @ LIP/GUTTER 11.0' PATCHBACK @ 0.84%	7+00 1408.72 @ LIP/GUTTER 11.0' PATCHBACK @ 1.73%	7+25 1408.89 @ LIP/GUTTER 11.0' PATCHBACK @ 2.55%	7+50 1409.05 @ LIP/GUTTER 11.0' PATCHBACK @ 1.27%	7+75 1409.22 @ LIP/GUTTER 11.0' PATCHBACK @ 1.00%	8+00 1409.39 @ LIP/GUTTER 11.0' PATCHBACK @ 1.09%	8+25 1409.45 @ LIP/GUTTER 9.0' PATCHBACK @ 2.22%	8+50 1409.48 @ LIP/GUTTER 9.0' PATCHBACK @ 4.00%	8+75 1409.88 @ LIP/GUTTER 9.0' PATCHBACK @ 4.44%	9+00 1409.11 @ LIP/GUTTER 9.0' PATCHBACK @ 4.33%	9+25 1409.23 @ LIP/GUTTER 9.0' PATCHBACK @ 3.88%	9+50 1409.36 @ LIP/GUTTER 9.0' PATCHBACK @ 2.44%	9+75 1409.48 @ LIP/GUTTER 9.0' PATCHBACK @ 1.56%	10+00 1409.61 @ LIP/GUTTER 9.0' PATCHBACK @ 2.00%	10+25 1409.73 @ LIP/GUTTER 9.0' PATCHBACK @ 1.22%	10+50 1409.86 @ LIP/GUTTER 9.0' PATCHBACK @ 1.56%	10+75 1409.98 @ LIP/GUTTER 11.0' PATCHBACK @ 1.62%	11+00 1410.09 @ LIP/GUTTER 11.0' PATCHBACK @ 2.08%	11+25 1410.12 @ LIP/GUTTER 5.0' PATCHBACK @ 3.00%	11+50 1410.38 @ LIP/GUTTER 5.0' PATCHBACK @ 6.00%
0.64%	1.60%	2.72%	2.48%	2.21%	0.84%	1.73%	2.55%	1.27%	1.00%	1.09%	2.22%	4.00%	4.44%	4.33%	3.88%	2.44%	1.56%	2.00%	1.22%	1.56%	1.62%	2.08%	3.00%	6.00%
0.64%	1.60%	2.72%	2.48%	2.21%	0.84%	1.73%	2.55%	1.27%	1.00%	1.09%	2.22%	4.00%	4.44%	4.33%	3.88%	2.44%	1.56%	2.00%	1.22%	1.56%	1.62%	2.08%	3.00%	6.00%



7+50 1409.05 @ LIP/GUTTER 11.0' PATCHBACK @ 1.27%	7+75 1409.22 @ LIP/GUTTER 11.0' PATCHBACK @ 1.00%	8+00 1409.39 @ LIP/GUTTER 11.0' PATCHBACK @ 1.09%	8+25 1409.45 @ LIP/GUTTER 9.0' PATCHBACK @ 2.22%	8+50 1409.48 @ LIP/GUTTER 9.0' PATCHBACK @ 4.00%	8+75 1409.88 @ LIP/GUTTER 9.0' PATCHBACK @ 4.44%	9+00 1409.11 @ LIP/GUTTER 9.0' PATCHBACK @ 4.33%	9+25 1409.23 @ LIP/GUTTER 9.0' PATCHBACK @ 3.88%	9+50 1409.36 @ LIP/GUTTER 9.0' PATCHBACK @ 2.44%	9+75 1409.48 @ LIP/GUTTER 9.0' PATCHBACK @ 1.56%	10+00 1409.61 @ LIP/GUTTER 9.0' PATCHBACK @ 2.00%	10+25 1409.73 @ LIP/GUTTER 9.0' PATCHBACK @ 1.22%	10+50 1409.86 @ LIP/GUTTER 9.0' PATCHBACK @ 1.56%	10+75 1409.98 @ LIP/GUTTER 11.0' PATCHBACK @ 1.62%	11+00 1410.09 @ LIP/GUTTER 11.0' PATCHBACK @ 2.08%	11+25 1410.12 @ LIP/GUTTER 5.0' PATCHBACK @ 3.00%	11+50 1410.68 @ LIP/GUTTER 5.0' PATCHBACK @ 6.00%	11+75 1410.65 @ LIP/GUTTER 5.0' PATCHBACK @ 1.80%	12+00 1410.52 @ LIP/GUTTER 5.0' PATCHBACK @ 2.80%	12+25 1410.40 @ LIP/GUTTER 5.0' PATCHBACK @ 3.00%	12+50 1410.53 @ LIP/GUTTER 5.0' PATCHBACK @ 5.00%	12+75 1410.65 @ LIP/GUTTER 5.0' PATCHBACK @ 2.00%	13+00 1410.78 @ LIP/GUTTER 5.0' PATCHBACK
1.27%	1.00%	1.09%	2.22%	4.00%	4.44%	4.33%	3.88%	2.44%	1.56%	2.00%	1.22%	1.56%	1.62%	2.08%	3.00%	6.00%	1.80%	2.80%	3.00%	5.00%	2.00%	
1.27%	1.00%	1.09%	2.22%	4.00%	4.44%	4.33%	3.88%	2.44%	1.56%	2.00%	1.22%	1.56%	1.62%	2.08%	3.00%	6.00%	1.80%	2.80%	3.00%	5.00%	2.00%	

SOUTHGATE PLAZA - PHASE II

LINDEN AVENUE FRONTAGE IMPROVEMENTS

ALEXANDER INVESTORS

LEWISTON, IDAHO

REVISION
DESCRIPTION

DATE
LITERATURE

APPROVED
CHECKED

SCALE
1"=30'

DRAWN BY
MEE

DATE
02-10-16

SHEET
C6

SCALE
1"=20' (24"x36" sheet)
1"=40' (11"x17" sheet)

DRAWING #
1603-C6

REGISTERED PROFESSIONAL ENGINEER

NO. 2107

STATE OF IDAHO

SHAMUS

2/10/16

1603-C6

ANTICIPATED OR NEW ASPHALT, SIDEWALK OR DEVELOPED AREA

BASE MATERIAL

TRENCH ZONE

3/4" MINUS [CURRENT TO SPEC 703.04] OR 5/8" MINUS [CURRENT W007/M41-10 SPEC 9-03.9] COMPACTED TO 95% MODIFIED PROCTOR AS PER AASHTO T180

IMPORTED PIPE ZONE MATERIAL

NEW PIPE

PIPE ZONE

3/4" MINUS [CURRENT TO SPEC 703.04] OR 5/8" MINUS [CURRENT W007/M41-10 SPEC 9-03.9] COMPACTED TO 95% MODIFIED PROCTOR AS PER AASHTO T180

SHAPE AND COMPACT BASE FOR EACH BELL

O.D. PIPE + 24" (MIN. WIDTH 36" UNLESS COMPLETELY FILLED WITH CDF)

6" MIN. FOR PIPE 30" DIA. OR LARGER

STABILIZATION MATERIAL REQUIRED IF FOUNDATION IS FOUND TO BE UNSUITABLE AS DETERMINED BY CITY ENGINEER.

CLASS 'D' 'NEW STREET CONSTRUCTION' BACKFILL SHALL BE USED IN AREAS WHERE ASPHALT PAVEMENT, CONCRETE CURB, SIDEWALK, DRIVEWAYS & GRAVEL SURFACING IS ANTICIPATED.

NOTES:

- CONTRACTOR SHALL COMPLY WITH THE MOST CURRENT OSHA REQUIREMENTS FOR EXCAVATIONS.
- CLASS 'D' BACKFILL SHALL COMPLY WITH REQUIREMENTS OF THE CITY'S STANDARDS CONSTRUCTION SPECIFICATIONS.
- TRENCH MATERIAL SHALL BE PLACED IN MAX. OF 6" LIFTS.
- IN EXISTING RIGHT-OF-WAY TRENCH EXCAVATION SHALL NOT BE MORE THAN 100 FEET AHEAD OF THE PIPE LAYING OPERATION.
- TRENCHES ARE TO BE BACKFILLED AT THE END OF EACH DAY.
- ANY ALTERATIONS TO THIS STANDARD MUST HAVE WRITTEN APPROVAL BY CITY ENGINEER.

CITY OF LEWISTON, IDAHO
PUBLIC WORKS DEPARTMENT

BACKFILL CLASS 'D'

APPROVED FOR PUBLICATION
City Engineer Date 3/5/13 DWG. NO. 1-6

ASPHALT PATCH THICKNESS SHALL BE NO LESS THAN THAT OF THE STREET CLASSIFICATION OR EXISTING THICKNESS WHICHEVER IS GREATER. PATCHES MUST BE PLACED IN TWO LIFTS.

EXISTING PAVEMENT

APPROVED BASE MATERIAL

TRENCH ZONE

3/4" MINUS [CURRENT TO SPEC 703.04] OR 5/8" MINUS [CURRENT W007/M41-10 SPEC 9-03.9] COMPACTED TO 95% MODIFIED PROCTOR AS PER AASHTO T180

IMPORTED PIPE ZONE MATERIAL

NEW PIPE

PIPE ZONE

3/4" MINUS [CURRENT TO SPEC 703.04] OR 5/8" MINUS [CURRENT W007/M41-10 SPEC 9-03.9] COMPACTED TO 95% MODIFIED PROCTOR AS PER AASHTO T180

SHAPE AND COMPACT BASE FOR EACH BELL

O.D. PIPE + 24" (MIN. WIDTH 36" UNLESS COMPLETELY FILLED WITH CDF)

STABILIZATION MATERIAL REQUIRED IF FOUNDATION IS FOUND TO BE UNSUITABLE AS DETERMINED BY CITY ENGINEER.

CLASS 'F' 'EXISTING STREETS' BACKFILL SHALL BE USED IN AREAS WHERE ASPHALT PAVEMENT CONCRETE CURB, SIDEWALK, DRIVEWAY, GRAVEL SURFACING WILL BE REPLACED.

NOTES:

- CONTRACTOR SHALL COMPLY WITH THE MOST CURRENT OSHA REQUIREMENTS FOR EXCAVATIONS.
- ALL TRENCHES EXCAVATED WITHIN EXISTING PAVED STREETS SHALL BE BACKFILLED AND SURFACED THE SAME DAY WITH A 2" THICK COMPACTED COLD MIX ASPHALT PATCH (SMOOTH) - TO BE REPLACED WITH THE CITY'S STANDARD HOT MIX ASPHALT SURFACING AS SOON AS SCHEDULING ALLOWS; UNLESS SPECIFICALLY APPROVED OTHERWISE BY THE CITY ENGINEER.
- THE NEW ASPHALT PATCH SHALL MATCH THE EXISTING PAVEMENT GRADE, ACROSS THE WIDTH OF THE TRENCH THE NEW SURFACE SHALL BE FLUSH OR UP TO 1/4" ABOVE THE EXISTING PAVEMENT GRADE.
- EXISTING PAVEMENT SHALL BE SAWCUT FULL DEPTH AND IN CONTINUOUS, STRAIGHT LINES. BROKEN EDGES WILL NOT BE ALLOWED. PAVEMENT CUTS SHALL BE 'TACKED' IMMEDIATELY PRIOR TO INSTALLATION OF THE HOT MIX PATCH.
- AFTER BACKFILLING TRENCH REMOVE ALL BROKEN OR LOOSE ASPHALT OR CONCRETE BEYOND IN THE INITIAL TRENCH.
- PATCH CANNOT OVERLAP ANOTHER PARALLEL PATCH AND CANNOT LEAVE EXISTING ASPHALT LESS THAN 36" WIDE.
- JOINTS TO BE TACKED AND SANDED WITH EMULSIFIED TACK.
- ANY ALTERATIONS TO THIS STANDARD MUST HAVE WRITTEN APPROVAL BY CITY ENGINEER.

CITY OF LEWISTON, IDAHO
PUBLIC WORKS DEPARTMENT

BACKFILL CLASS 'F'

APPROVED FOR PUBLICATION
City Engineer Date 3/5/13 DWG. NO. 1-7

FINISH GRADE

IDENTIFYING TAPE

PIPELINE OR CONDUIT

WATERLINES MUST HAVE BOTH IDENTIFYING TAPE AND TRACER WIRE (SEE NOTE BELOW)

TYPE	COLOR	SIZE	DETECTABLE	IMPRINT
WATER	BLUE	3"	NO	CAUTION BURIED WATER LINE BELOW
NO. 12 AWG. COPPER TRACER WIRE INSULATED WITH 30 MIL OF HIGH DENSITY POLYETHYLENE (HDPE) CLASSIFIED AS HIGH MOLECULAR WEIGHT POLYETHYLENE (HMWPE) IN 500 FT REELS. WIRE SHALL BE ATTACHED TO WATERLINE AT INTERVALS NOT TO EXCEED 15 FT SEPARATION. ALL SPLICES SHALL BE 3M DIRECT BURY SPLICE KIT DBR/Y-6 AND CONTRACTOR SHALL CONDUCT A CONDUCTIVITY TEST ON ALL LOCATING WIRE SPLICES.				
STORM SEWER	GREEN	3"	NO	CAUTION BURIED STORM SEWER LINE BELOW
SANITARY SEWER	GREEN	3"	NO	CAUTION BURIED SEWER LINE BELOW
GAS	YELLOW	3"	NO	CAUTION BURIED GAS LINE BELOW
CABLE	ORANGE	3"	NO	CAUTION BURIED CABLE LINE BELOW
ELECTRICAL	RED	3"	NO	CAUTION BURIED ELECTRIC LINE BELOW

CITY OF LEWISTON, IDAHO
PUBLIC WORKS DEPARTMENT

IDENTIFYING TAPE DETAIL

APPROVED FOR PUBLICATION
City Engineer Date 3/11/16 DWG. NO. 1-8

12"

18"

Green Letters

White Sign

White Symbol

Blue Background

Green Letters

STATE DISABLED PARKING PERMIT REQUIRED

RESERVED PARKING

Note:

- Sign follows the State Specific Guidelines for 12x18 Washington Handicapped Parking
- Sign posts and their foundation shall be constructed as to hold signs in a proper position to resist swaying in the wind or displacement by vandalism.
- Lettering & reflectorization shall conform to MUTCD
- Disabled parking sign mounted on walls or buildings shall also be 7' min. to the bottom of the sign to finished grade.

CITY OF LEWISTON, IDAHO
PUBLIC WORKS DEPARTMENT

DISABLED PARKING SIGN INSTALLATION

APPROVED FOR PUBLICATION
City Engineer Date 2-5-09 DWG. NO. 1-13

TYPICAL DISABLED PARKING STALL

Striping shall be blue in color.

SIGN PLACEMENT

4" Min.

222" Min.

132" Min.

60"

132" Min.

132" Min.

60"

324" Min.

Notes:

- The international accessibility symbol as provided in section 49-410 Idaho Code shall be painted in each space.
- Disabled parking stalls and access aisles shall not slope more than 2% in any direction.
- If a curb ramp is required, it cannot project into the access aisle.
- Each access aisle must connect directly to an accessible route.
- Intent of this standard is to conform to ADA and ANSI requirements. These requirements shall take precedence over this standard.

CITY OF LEWISTON, IDAHO
PUBLIC WORKS DEPARTMENT

DISABLED PARKING STALLS

APPROVED FOR PUBLICATION
City Engineer Date 2-5-09 DWG. NO. 1-14

WALL

CURB

INTERLOCKING

INTERLOCK TO CURB

Dimension

Dimension	On diagram	Angle		
		45°	60°	75° 90°
Stall width, parallel to aisle	A	12.7	10.4	9.3 9.0
Stall length of line	B	27.5	23.7	20.9 18.5
Stall depth to wall	C	19.5	20.5	20.0 18.5
Aisle width between stall lines	D	12.0	16.0	23.0 26.0
Stall depth, interlock	E	16.5	18.5	18.5 18.5
Module, wall to interlock	F	48.0	55.0	62.0 63.0
Module, interlocking	G	45.0	53.0	61.0 63.0
Module, interlock to curb face	H	46.0	53.2	59.5 60.5
Bumper overhang (typical)	I	2.0	2.3	2.5 2.5
Offset	J	6.4	2.6	0.6 0.0
Setback	K	13.1	9.3	4.8 0.0
Cross aisle, one-way	L	14.0	14.0	14.0 14.0
Cross aisle, two-way	-	24.0	24.0	24.0 24.0

x = Stall not accessible in certain layouts
Parking layout dimension (in ft.) for 9' x 18.5' stalls at various angles.

The minimum width of parking stalls is 9 ft., however the recommended stall width for high turnover parking lots is 10 ft. The inclusion of handicapped parking is required by City Code Sec. 37-148.

Parallel parking stalls shall be 8' wide x 23' long.

CITY OF LEWISTON, IDAHO
PUBLIC WORKS DEPARTMENT

PARKING LAYOUT DIMENSIONS

APPROVED FOR PUBLICATION
City Engineer Date 2-5-09 DWG. NO. 1-15

P/L

BUMPER OVERHANG

2" or 5" MINIMUM LANDSCAPING STRIP AS PER CITY CODE CHAPTER 37 - ZONING

4" MIN. HEIGHT CURB TYPICAL ALL SIDES

BUMPER OVERHANG PLUS 4" MIN. WALKWAY

ASPHALT

5/8" MINUS CRUSHED ROCK

2% MIN. SLOPE REQUIRED ON ALL PARKING LOT SURFACES

PARKING LOT USE	SURFACING DEPTHS *	
	ASPHALT	ROCK
LIGHT- PARKING LOTS UP TO 85 STALLS NO HEAVY TRUCKS	2"	4"
MEDIUM- PARKING LOTS FROM 85-500 STALLS LESS THAN 10 HEAVY TRUCKS PER DAY	2"	6"
HEAVY- PARKING LOTS OVER 500 STALLS 10-20 HEAVY TRUCKS PER DAY	4"	4"
VERY HEAVY- 20-400 HEAVY TRUCKS PER DAY	4"	8"

(Heavy trucks are those with a gross weight exceeding 8,000 lb.)
* These are minimum surfacing depths for typical conditions.
The owner is responsible for determining if greater depths are necessary.
Surfacing depths less than minimum require engineering study and approval by City Engineer.

NOTES:

- Concrete and brick pavers are acceptable surfacing materials for parking lots. Where special parking conditions occur, such as overflow or seasonal parking areas, other surfacing may be used when approved by the City Engineer.
- See Standard #1-15 for parking layout and striping dimensions.
- Sight obscuring fence, 5' to 6' in height, required when dwelling is adjacent to parking lot except where vision clearance is required.
- Surface runoff must be directed to on site detention facilities as per city codes and standards. Drainage plan shall be subject to approval by City Engineer.
- Root shields are recommended where shallow rooted, vigorous growth trees are located in planting strip to avoid pavement damage.
- Work within public right-of-way shall be to city standards and requires a right-of-way work permit.
- Landscaping plan shall be subject to design requirements of City Code Chapter 37, Zoning or approval by the Community Development Director.
- In Industrial and Port Zones where gravel surfacing is permitted by code for parking and storage areas crushed rock with the following gradation shall be used:

SIEVE SIZE	% PASSING
1"	100
3/4"	90-100
No. 4	40-65
No. 8	30-50
No. 20	3-9

CITY OF LEWISTON, IDAHO
PUBLIC WORKS DEPARTMENT

PARKING LOT SECTION

APPROVED FOR PUBLICATION
City Engineer Date 2-5-09 DWG. NO. 1-16

ALLEY

OBSTRUCTION

PROPERTY LINE

DRIVEWAY

DRIVEWAY WIDTH

FLARE WIDTH VARIES

6" MINIMUM FROM ALLEY

3 MIN.

RESIDENTIAL DRIVEWAY WIDTH 12' MIN. - 30' MAX. TWO-WAY

10' MINIMUM BETWEEN DRIVEWAY

FLARE WIDTH VARIES

COMMERCIAL DRIVEWAY WIDTH 25' MIN. - 40' MAX. TWO-WAY 15' MIN. - 25' MAX. ONE-WAY

3 MIN.

FLARE WIDTH VARIES

5' MINIMUM FROM PROPERTY LINE

20' MINIMUM FROM CURB RETURNS

STREET

20' MIN.

OBSTRUCTION

CURB RADIUS

CURB

NOTES:

- LOCATION AND NUMBER OF ALL DRIVEWAYS ACCESS SHALL BE APPROVED BY THE CITY ENGINEER.
- CURB OPENINGS, EXCEPT FOR JOINT-USE DRIVEWAYS AND DRIVEWAYS ON LOTS HAVING 21' FRONTAGE OR LESS, SHALL BE LOCATED AT LEAST 5 FEET FROM THE SIDE PROPERTY LINE EXTENDED.
- ALL DRIVEWAYS AND CURB OPENINGS SHALL BE A MINIMUM OF 3 FEET FROM ANY OBSTRUCTION, I.E. POLES, HYDRANTS, ETC...
- NO PORTION OF ANY DRIVEWAY SHALL BE ALLOWED ACROSS A PROPERTY LINE EXTENDED NORMAL TO THE ROADWAY FROM THE FRONT CORNER OF THE PROPERTY, EXCEPT THAT JOINT-USE DRIVEWAYS MAY BE PERMITTED IN SPECIAL INSTANCES WHERE WRITTEN APPROVAL OF BOTH PROPERTY OWNERS IS FILED WITH THE COUNTY RECORDER'S OFFICE.
- APPROACH ALIGNMENT: APPROACH ANGLES OF LESS THAN 45° OR GREATER THAN 135° WILL NOT BE PERMITTED.
- DRIVEWAYS MUST BE POSITIONED TO PRESERVE A CLEAR VIEW TRIANGLE OF 20 FEET ALONG THE PROPERTY LINE.
- ON CORNER LOTS, DRIVEWAYS MUST BE ALONG THE PROPERTY LINE FURTHEST FROM THE INTERSECTION. LEAVE A TWO FOOT SPACE BETWEEN THE DRIVEWAY AND PROPERTY LINE FOR THE WATER METER.

CITY OF LEWISTON, IDAHO
PUBLIC WORKS DEPARTMENT

DRIVEWAY LOCATION & WIDTH REQUIREMENT

APPROVED FOR PUBLICATION
City Engineer Date 2-5-09 DWG. NO. 2-1

REVISION DESCRIPTION

REV. DATE

CHECKED

APPROVED

SCALE

SHEET SIZE

D

DRAWN BY

MEE

DATE

02-10-16

JOSH

JOSH

0603

SHEET

C7

DRAWING #

1603-C7

REGISTERED PROFESSIONAL ENGINEER AND SURVEYOR
#2107
STATE OF IDAHO
ALEXANDER INVESTORS
2/10/16

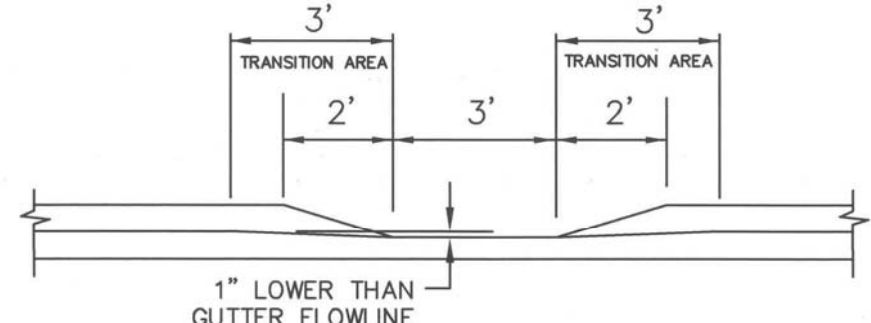
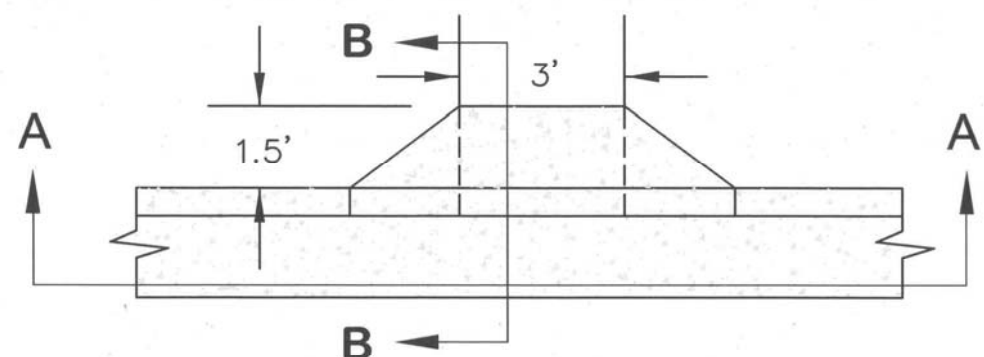
SOUTHGATE PLAZA - PHASE II
PARKING LOT & FRONTAGE IMPROVEMENTS
STANDARD DETAILS
ALEXANDER INVESTORS
LEWISTON, IDAHO

HEDCO

HAMMOND ENGINEERING & DEVELOPMENT CO.
528 BRYDEN AVENUE LEWISTON, IDAHO 83801
(208) 786-5422

SHEET

C7



- NOTES:
- SET APRON ENTRANCE 1" LOWER THAN PROPOSED FLOWLINE TO ENSURE POSITIVE DRAINAGE INTO CATCH BASIN. CURB FLOWLINE SHALL BE TRANSITION TO 3' ON EACH SIDE OF INLET APRON TO ADJUST FOR 1" DROP. GUTTER LIP AND TOP OF CURB ARE NOT TO BE DEPRESSED.
 - NOT TO BE USED WHEN BUILDING ELEVATION IS LOWER THAN THE EXISTING CENTERLINE ELEVATION OF THE ADJACENT ROADWAY.
 - APRON TO SLOPE TO BOTTOM OF SWALE.

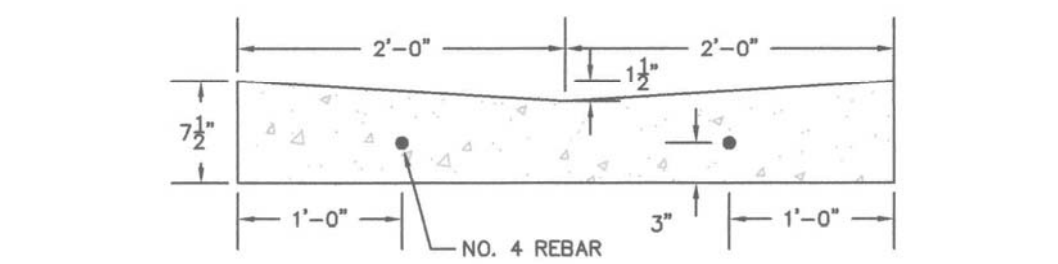
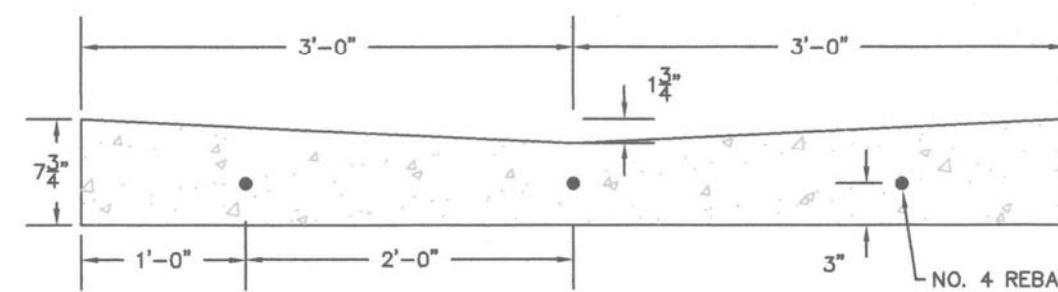
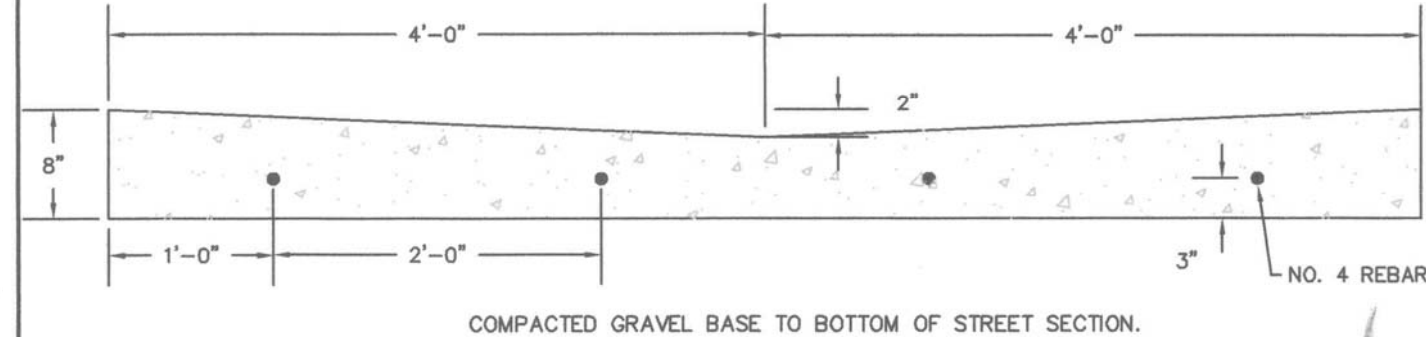
CITY OF LEWISTON, IDAHO
PUBLIC WORKS DEPARTMENT

INLET APRON

APPROVED FOR PUBLICATION
[Signature] 2-5-09
City Engineer Date

DWG. NO.
2-3

M:\Standards\2010 - Standards\2 - Concrete\Inlet Apron.dwg



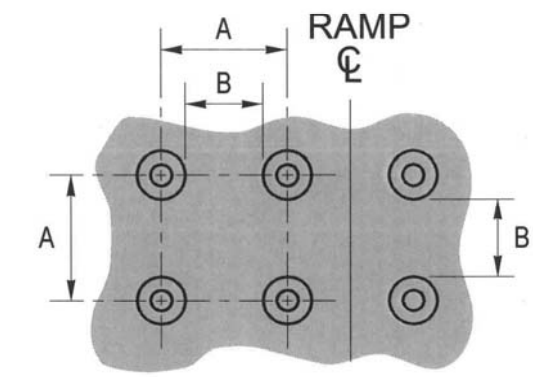
CITY OF LEWISTON, IDAHO
PUBLIC WORKS DEPARTMENT

VALLEY GUTTER

APPROVED FOR PUBLICATION
[Signature] 2-5-09
City Engineer Date

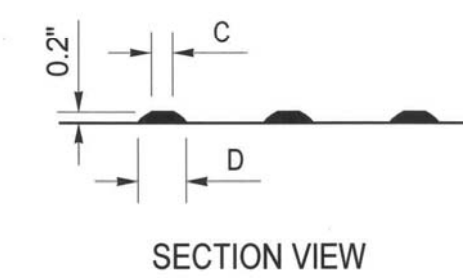
DWG. NO.
2-4

M:\Standards\2008 - Standards\2 - Concrete\Valley Gutter.dwg



	MIN.	MAX.
A	1.6"	2.4"
B	.65"	1.5"
C	50%-65% OF BASE DIA.	
D	.9"	1.4"

PLAN



THIS PATTERN AREA SHALL BE YELLOW IN COLOR

- Notes:
- Detectable truncated-dome warning, 2 ft wide, must be provided for the full width of ramps and blended connections to mark the street edge and fully approved by current ADA requirements.
 - At least one corner of the detectable warning panel shall be coincident to the back of curb

CITY OF LEWISTON, IDAHO
PUBLIC WORKS DEPARTMENT

DETECTABLE WARNING FOR PEDESTRIAN ACCESS

APPROVED FOR PUBLICATION
[Signature] 2/1/10
City Engineer Date

DWG. NO.
2-5

M:\Standards\2010 - Standards\2 - Concrete\Detectable Dome.dwg

GENERAL NOTES FOR ALL TYPES OF CURB AND GUTTER

- SECURE A PERMIT FOR CONSTRUCTION, BEFORE BEGINNING CONSTRUCTION IN PUBLIC RIGHT-OF-WAY.
- GRADE, ALIGNMENT AND CURB TYPE SHALL BE AS APPROVED BY THE CITY ENGINEER.
- ALIGNMENT AND GRADE STAKED TO LIP OF GUTTER (LIP) SHALL BE ESTABLISHED OR APPROVED BY THE CITY ENGINEER.
- THE TOLERANCE FOR FINISHED CURB AND GUTTER - MAX. VARIATION OF SURFACE FLATNESS: 1/4" INCH IN 10 FEET. MAX. VARIATION FROM TRUE POSITION (DESIGN GRADE): 1/2" INCH.
- BASE MATERIAL SHALL BE 4" OF 3/4" MINUS [CURRENT ITD SPEC 703.04] OR 5/8" INCH MINUS [CURRENT WDOT/M41-10 SPEC 9-03.9] CRUSHED AGGREGATE BASE MATERIAL COMPACTED TO 95% MAXIMUM DENSITY AS DETERMINED BY MODIFIED PROCTOR AS PER AASHTO T180. ALL FILL OR BACKFILL AREAS SHALL BE PLACED IN 6" TO 8" MAXIMUM LIFTS. IN AREAS OF SMALL PROJECTS, LIMITED HEAVY TRUCK TRAFFIC OR WHERE COMPACTION EQUIPMENT HAS LIMITED ACCESS A REDUCED % COMPACTION MAY BE ALLOWED WITH WRITTEN APPROVAL FROM PUBLIC WORKS DIRECTOR.
- CONCRETE SHALL BE 3,000 PSI MINIMUM AT 28 DAYS, MAXIMUM WATER/CEMENT RATIO SHALL BE 0.5 (LB/LB), 5" MAX. SLUMP, AIR CONTENT (%) 6.5 ±1.5.
- DUMMY JOINTS AT 10 FOOT INTERVALS AND AT CURB RADII, 3/4" TO 1" DEEP. CONSTRUCTION JOINTS LOCATIONS AS DIRECTED BY CITY ENGINEER. DIFFERENTIAL ELEVATION BETWEEN ADJACENT SECTIONS SHALL NOT EXCEED 1/4".
- THE CONTRACTOR ARE REQUIRED BY THE PUBLIC WORKS DEPARTMENT TO MARK STUB-OUTS AND VALVES IN THE UNCURVED CONCRETE.
- THE CONTRACTOR OR OWNER SHALL NOTIFY THE PUBLIC WORKS DEPARTMENT FOR INSPECTION AFTER THE FORMS ARE SET AND THE PUBLIC WORKS DEPARTMENT SHALL BE NOTIFIED NO LESS THAN 2 WORKING DAYS BEFORE PLACEMENT OF CONCRETE FOR A FINAL INSPECTION. FAILURE TO NOTIFY THE PUBLIC WORKS DEPARTMENT IS GROUNDS FOR REJECTION OF CURB AND GUTTER.
- CONCRETE SURFACE TO HAVE A LIGHT BROOM FINISH PARALLEL WITH THE LENGTH OF THE CURB.
- DUMMY JOINTS AT 10 FOOT INTERVALS AND AT CURB RADII, 3/4" TO 1" DEEP. CONSTRUCTION JOINTS LOCATIONS AS DIRECTED BY CITY ENGINEER. DIFFERENTIAL ELEVATION BETWEEN ADJACENT SECTIONS SHALL NOT EXCEED 1/4".
- APPLY UNIFORM COAT OF REZ-SEAL OR APPROVED EQUIVALENT CURING COMPOUND TO EXPOSED CONCRETE IMMEDIATELY AFTER FINISHING.
- ROLLED CURB AND GUTTER SHALL NOT BE USED:
 - ON STREETS IN COMMERCIAL AND INDUSTRIAL ZONED AREAS.
 - ON STREETS WITH LONGITUDINAL (LENGTHWISE) GRADES IN EXCESS OF 6%.
 - ON ANY ARTERIAL OR COLLECTOR.
 - WITHOUT PRIOR APPROVAL OF THE CITY ENGINEER.
 - WHEN SIDEWALK IS LOCATED AT THE BACK OF CURB.

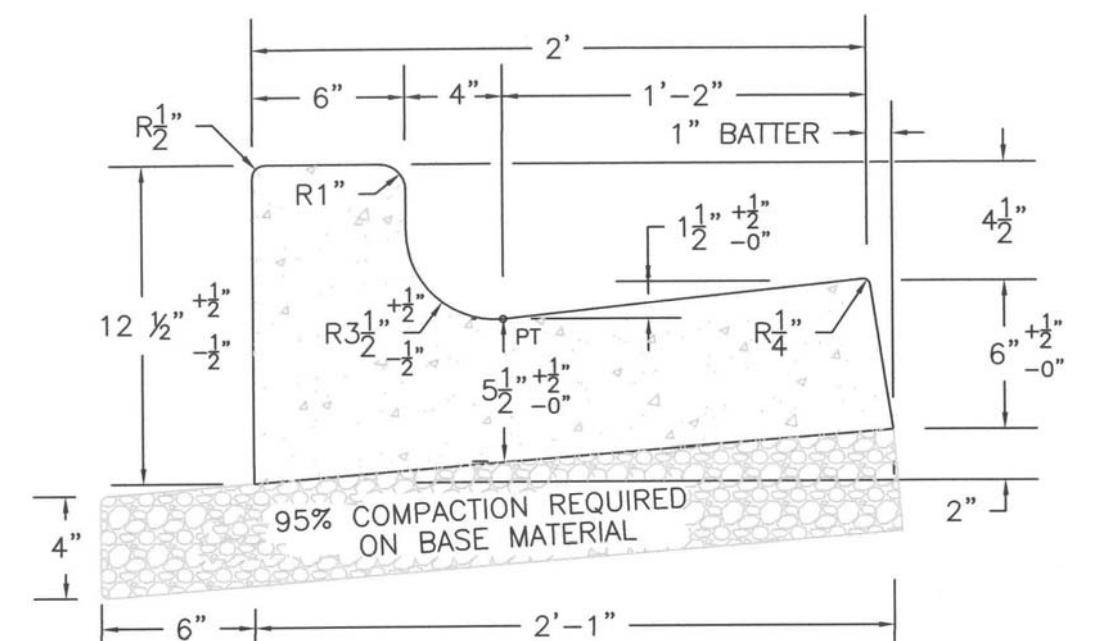
CITY OF LEWISTON, IDAHO
PUBLIC WORKS DEPARTMENT

GENERAL NOTES FOR ALL TYPES OF CURB AND GUTTER

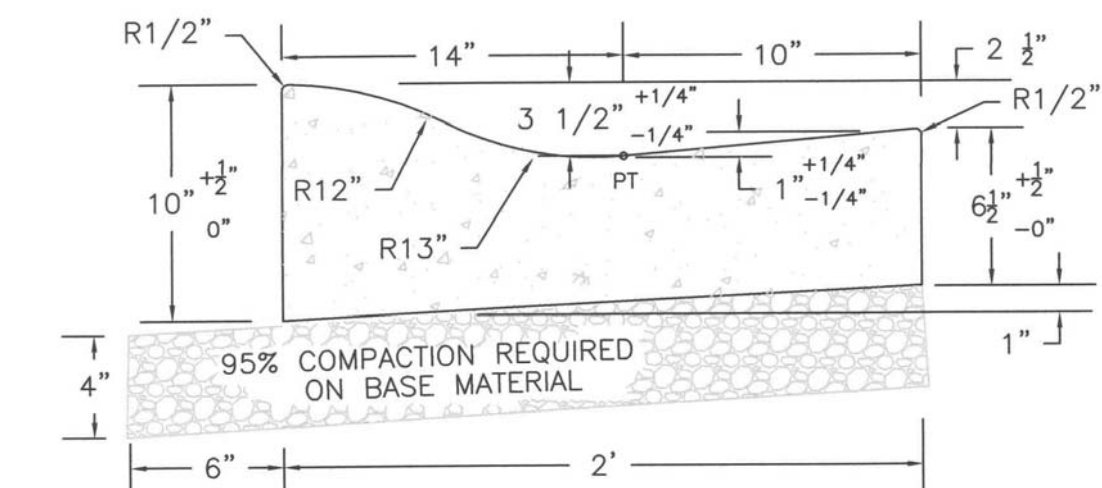
APPROVED FOR PUBLICATION
[Signature] 2/1/10
City Engineer Date

DWG. NO.
2-6

M:\Standards\2010 - Standards\2 - Concrete\General_Notes_Concrete.dwg



HIGH BACK CURB & GUTTER



ROLLED CURB & GUTTER

ALL TOLERANCES ARE ±1/4" UNLESS OTHERWISE NOTED

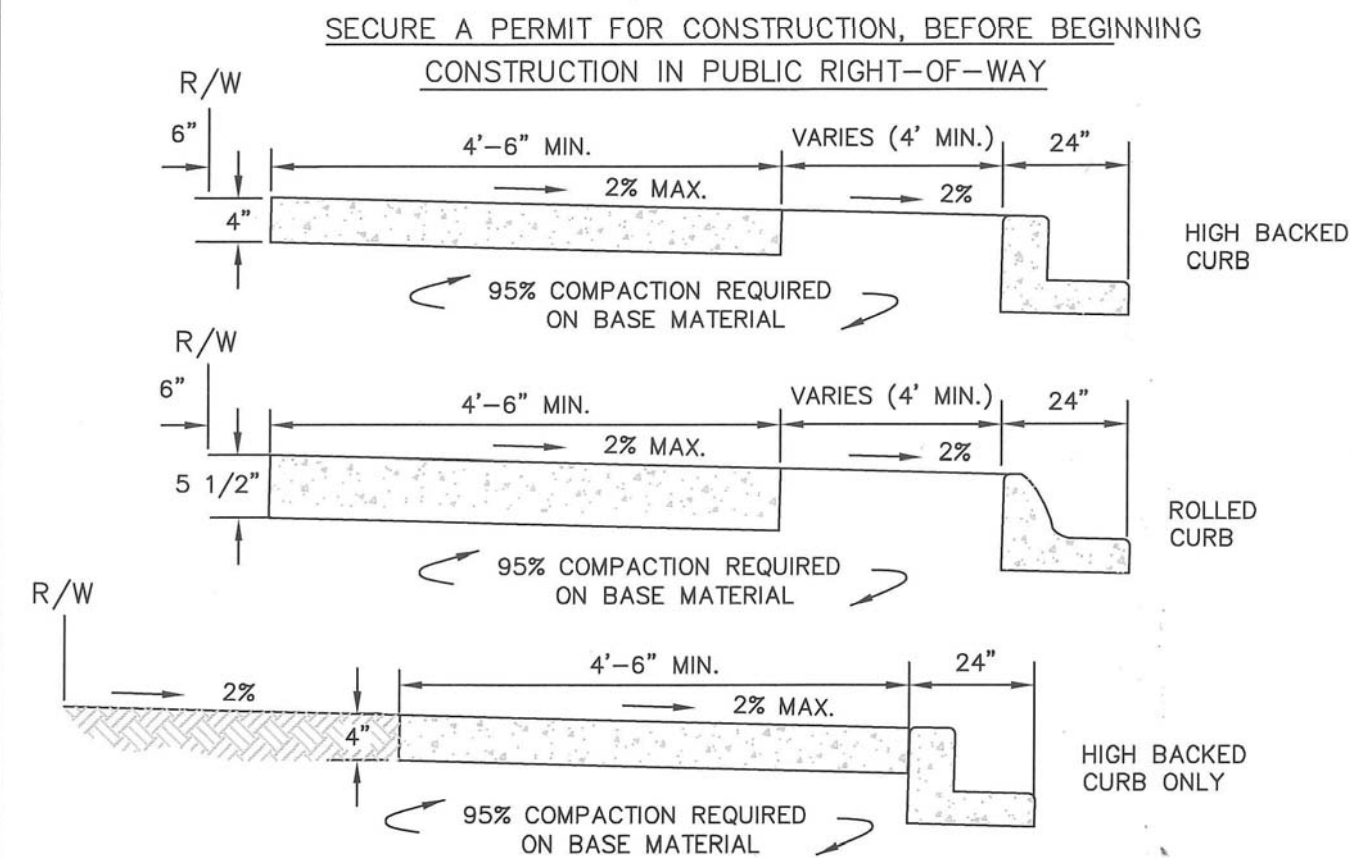
CITY OF LEWISTON, IDAHO
PUBLIC WORKS DEPARTMENT

**HIGH BACK CURB & GUTTER
ROLLED CURB & GUTTER**

APPROVED FOR PUBLICATION
[Signature] 2-5-09
City Engineer Date

DWG. NO.
2-7

M:\Standards\2008 - Standards\2 - Concrete\HighBack_Rolled_Curb.dwg



GENERAL NOTES FOR ALL SIDEWALK:

- LINE AND GRADE STAKED T.S., TOP OF SIDEWALK, B.S., BACK OF SIDEWALK.
- GRADE AND ALIGNMENT TO BE APPROVED BY THE CITY ENGINEER.
- THE TOLERANCE FOR FINISHED SIDEWALK - MAX. VARIATION OF SURFACE FLATNESS: 1/4" INCH IN 10 FEET. MAX. VARIATION FROM TRUE POSITION (DESIGN GRADE): 1/2" INCH. NO PONDING IS ALLOWED ON SIDEWALKS, STEPS OR PEDESTRIAN RAMPS.
- BASE MATERIAL SHALL BE 4" OF 3/4" MINUS [CURRENT ITD SPEC 703.04] OR 5/8" MINUS [CURRENT WDOT/M41-10 SPEC 9-03.9] CRUSHED AGGREGATE BASE MATERIAL COMPACTED TO 95% MAXIMUM DENSITY AS DETERMINED BY MODIFIED PROCTOR AS PER AASHTO T180. ALL FILL OR BACKFILL AREAS SHALL BE PLACED IN 6" MAX. LIFTS.
- CONTRACTION/DUMMY JOINTS SHALL BE PLACED AT 5' INTERVALS, 3/4" TO 1" DEEP; INSTALL A PERFORMED EXPANSION JOINT FILLER TO THE FULL DEPTH & WIDTH EVERY 100 FEET.
- CONCRETE SHALL BE 3,000 PSI MIN. AT 28 DAYS, MAX. WATER/CEMENT RATIO SHALL BE 0.5 (LB/LB), 5" MAX. SLUMP, AIR CONTENT (%) 6.5 ±1.5.
- THE CONTRACTOR OR OWNER SHALL NOTIFY THE PUBLIC WORKS DEPT. FOR INSPECTION OF BASE MATERIAL AFTER FORMS ARE SET AND THE PUBLIC WORKS DEPT. WILL BE NOTIFIED NO LESS THAN 2 WORKING DAYS BEFORE PLACEMENT OF CONCRETE, FOR FINAL INSPECTION.
- CONCRETE SURFACE SHALL HAVE LIGHT BROOM FINISH PERPENDICULAR TO LENGTH OF S/W.
- APPLY UNIFORM COAT OF REZ-SEAL OR APPROVED EQUIVALENT CURING COMPOUND TO EXPOSED CONCRETE IMMEDIATELY AFTER FINISHING.
- NAME OF CONTRACTOR AND YEAR TO BE STAMPED AT EACH END OF WORK AND AT INTERVALS OF 300 FT.
- CONCRETE SURFACE SHALL BE FREE OF SURFACE BLEMISHES OR VOIDS GREATER THAN 1/4". JOINTS AND EDGES SHALL BE CLEAN AND FREE OF EXCESS SPALLING OR VOIDS.
- A 6" STRIP TO BE LOCATED BETWEEN RIGHT-OF-WAY LINE AND SIDEWALK FOR PLACEMENT OF PROPERTY PINS WHEN PLANTING STRIP OR RETENTION SWALES ARE PLACED BEHIND CURB AND GUTTER.

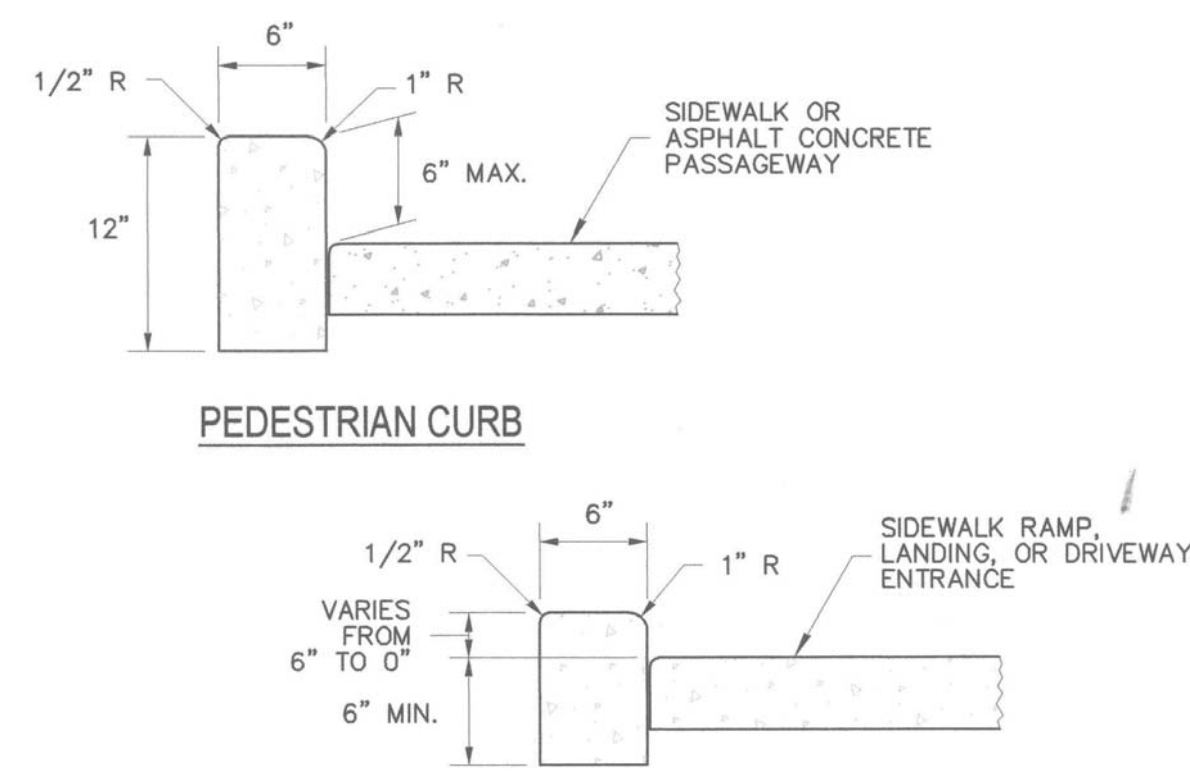
CITY OF LEWISTON, IDAHO
PUBLIC WORKS DEPARTMENT

CONCRETE SIDEWALK

APPROVED FOR PUBLICATION
[Signature] 8/27/15
City Engineer Date

DWG. NO.
2-8

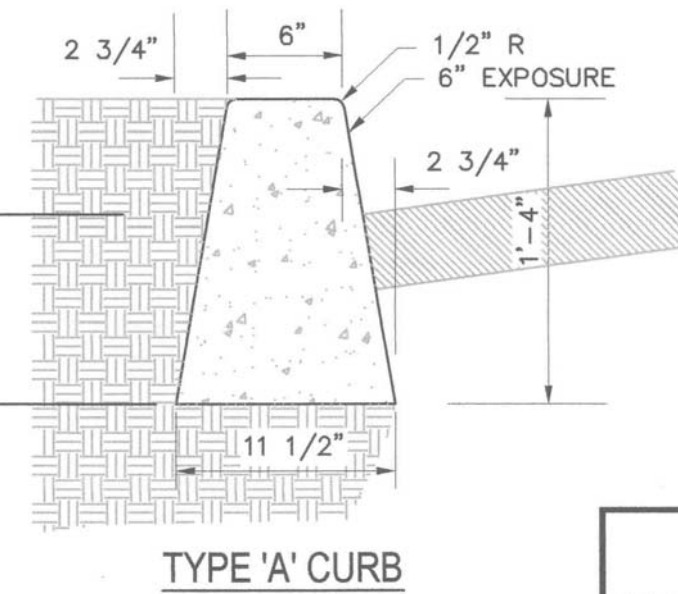
M:\Standards\2008 - Standards\2 - Concrete\Concrete Sidewalk.dwg



PEDESTRIAN CURB

PEDESTRIAN CURB

AT SIDEWALK RAMPS & LANDINGS,
AND DRIVEWAY ENTRANCES



TYPE 'A' CURB

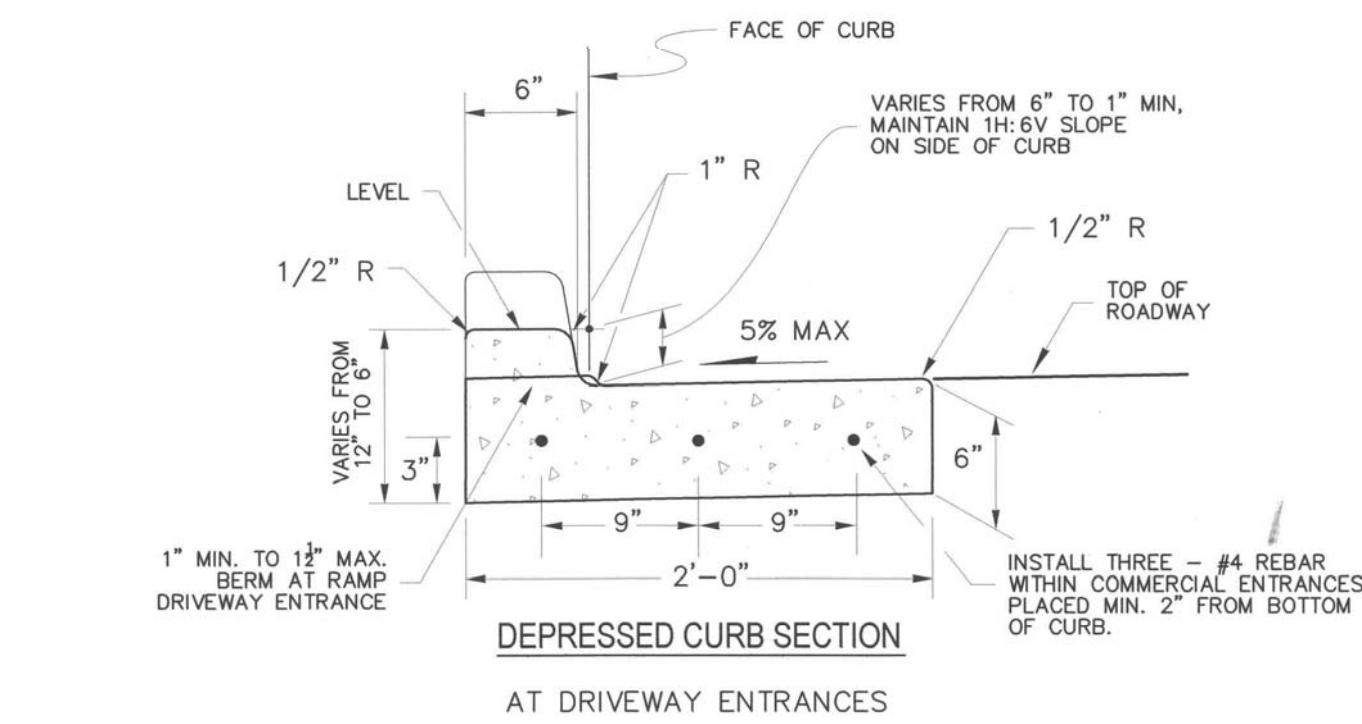
CITY OF LEWISTON, IDAHO
PUBLIC WORKS DEPARTMENT

**PEDESTRIAN CURB
AND TYPE 'A' CURB**

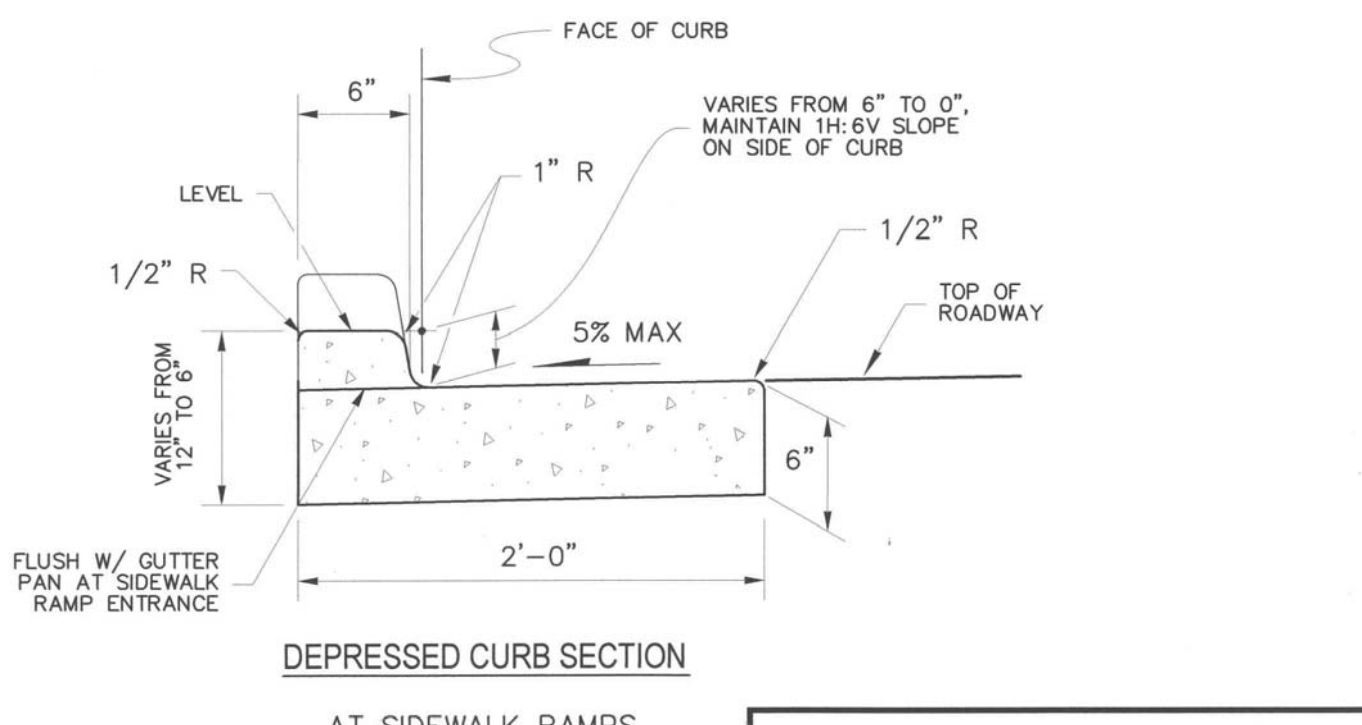
APPROVED FOR PUBLICATION
[Signature] 2-5-09
City Engineer Date

DWG. NO.
2-9

M:\Standards\2008 - Standards\2 - Concrete\Pedestrian_Type 'A' Curb.dwg



**DEPRESSED CURB SECTION
AT DRIVEWAY ENTRANCES**



**DEPRESSED CURB SECTION
AT SIDEWALK RAMPS**

CITY OF LEWISTON, IDAHO
PUBLIC WORKS DEPARTMENT

**DEPRESSED CURB
SECTION**

APPROVED FOR PUBLICATION
[Signature] 3-9-08
City Engineer Date

DWG. NO.
2-10

M:\Standards\2008 - Standards\2 - Concrete\Depressed Curb Section.dwg

REV.	DATE	DESCRIPTION	CHECKED	APPROVED

SCALE	SHEET SIZE	DRAWN BY	CHECKED BY	JOB NO.	SHEET	DRAWING #
	D	MEE	JSH	1603	CB	1603-CB

APPROVED FOR PUBLICATION
[Signature] 2/1/10
City Engineer Date

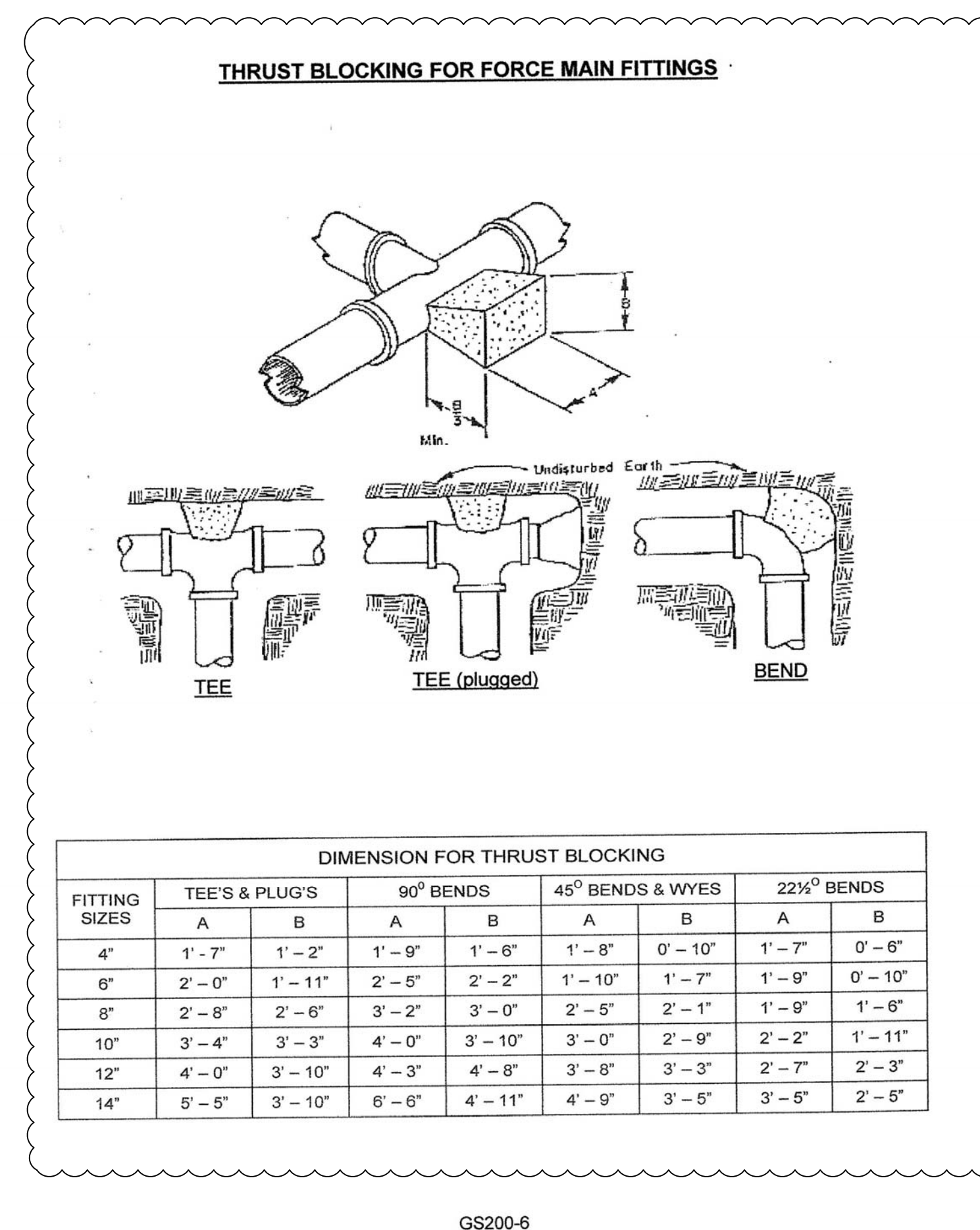
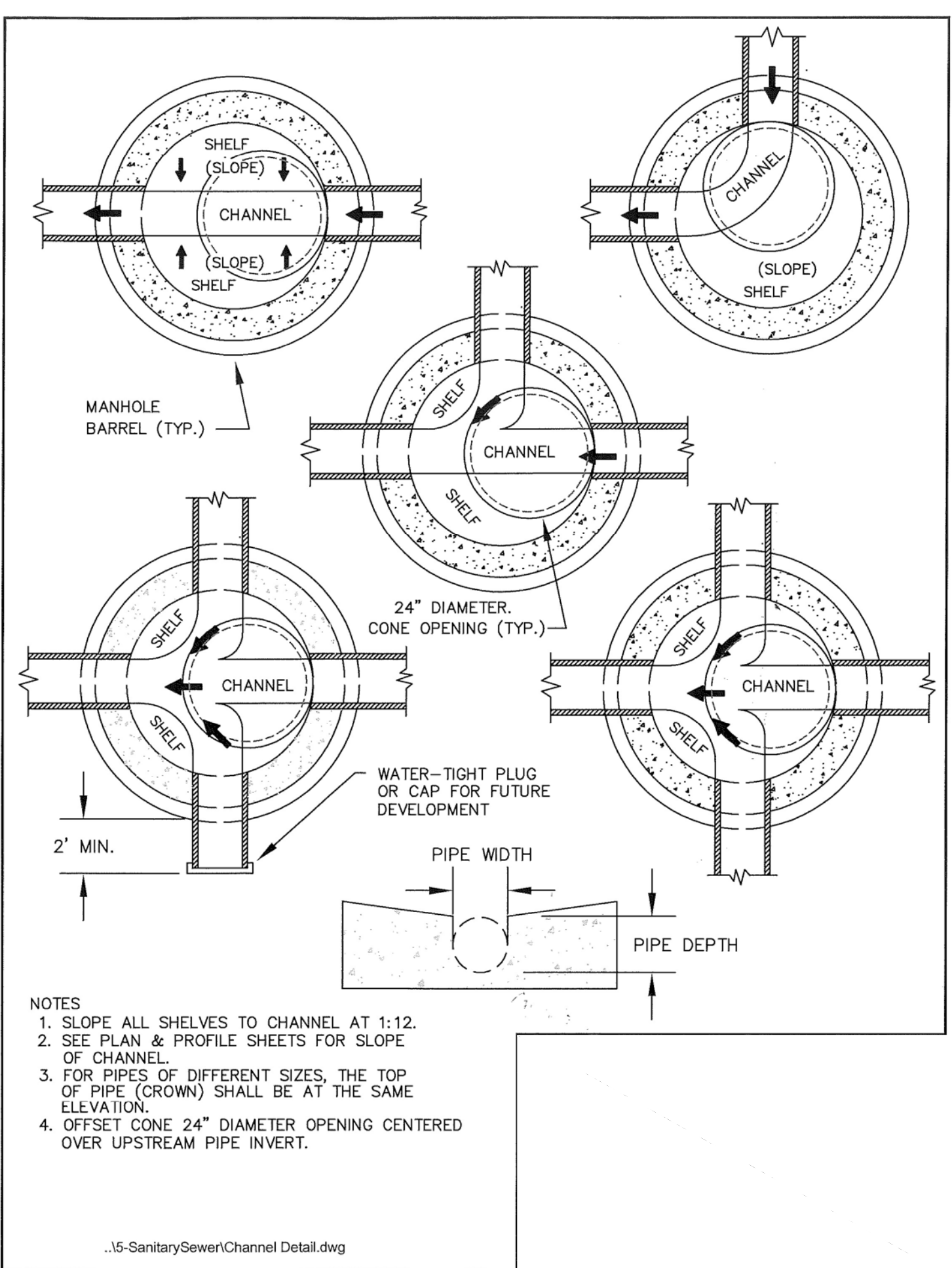
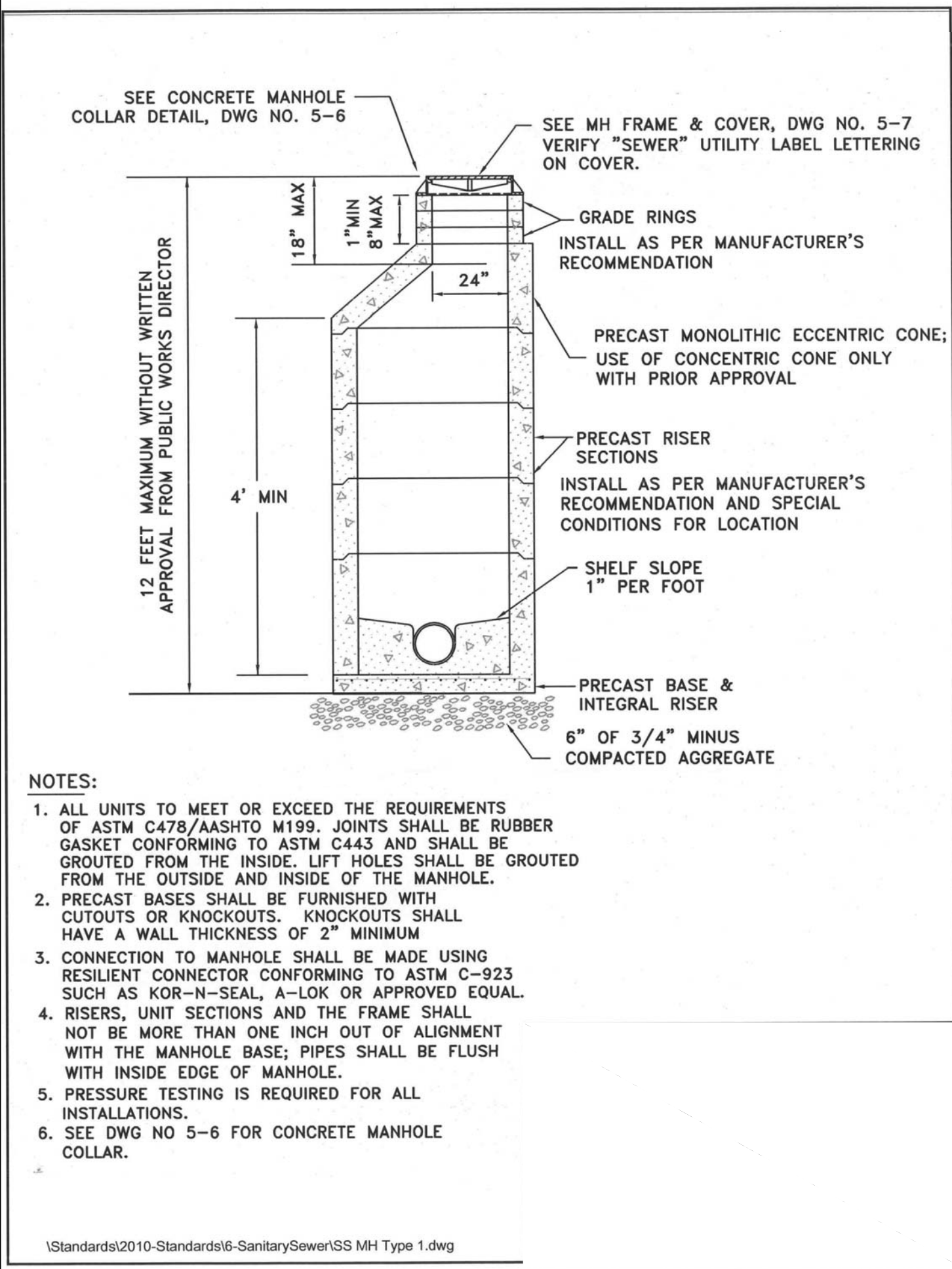
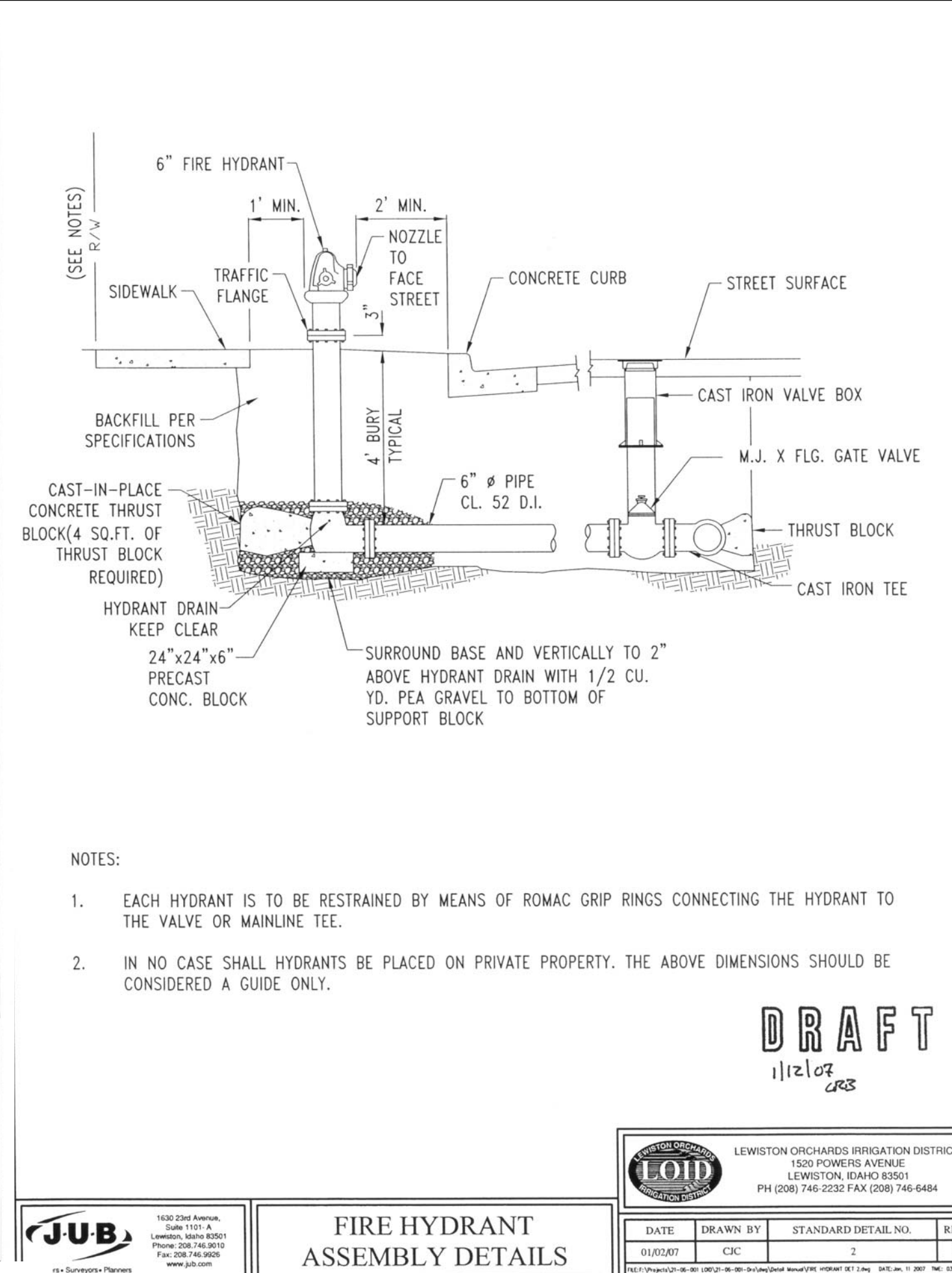
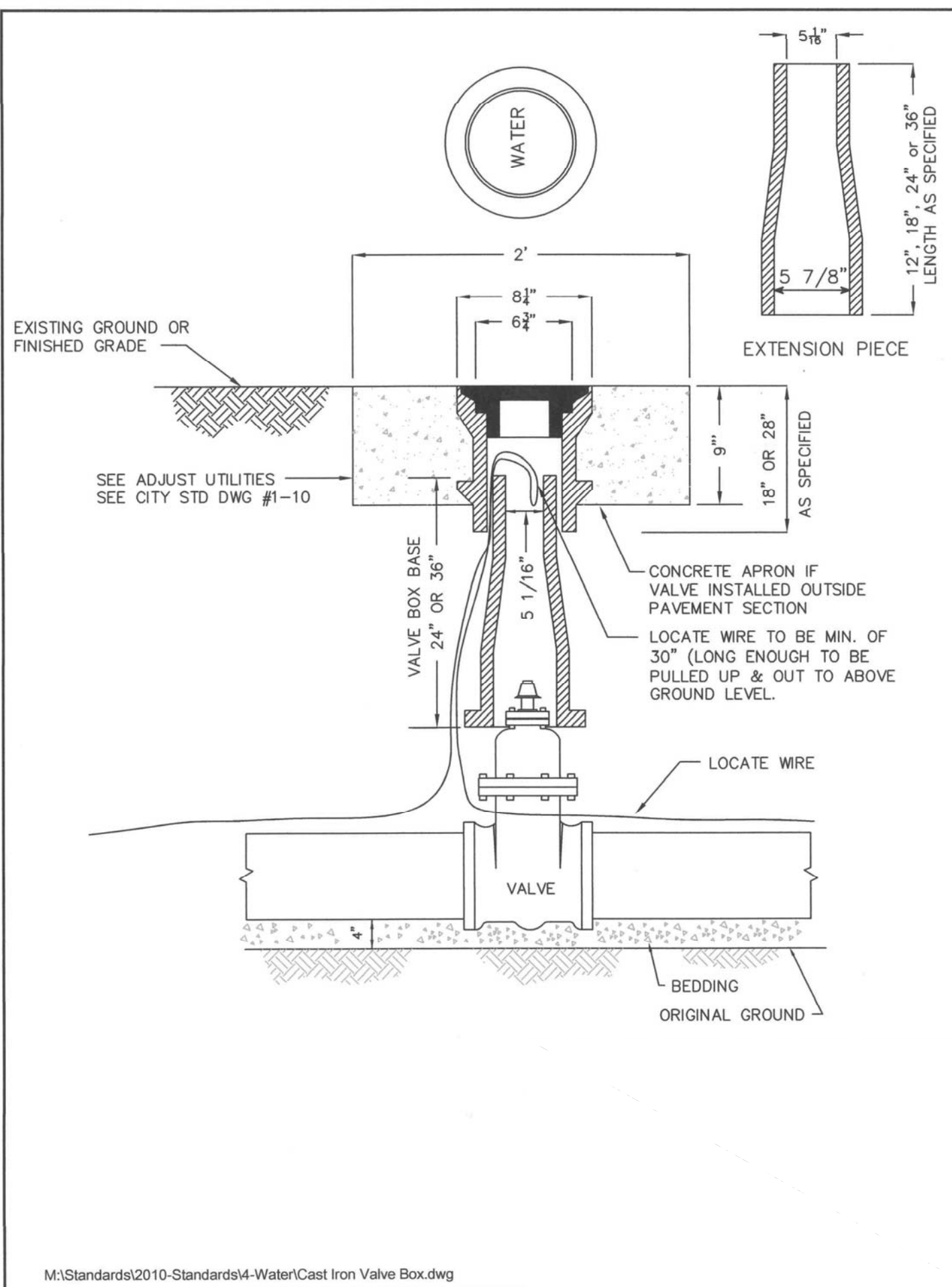
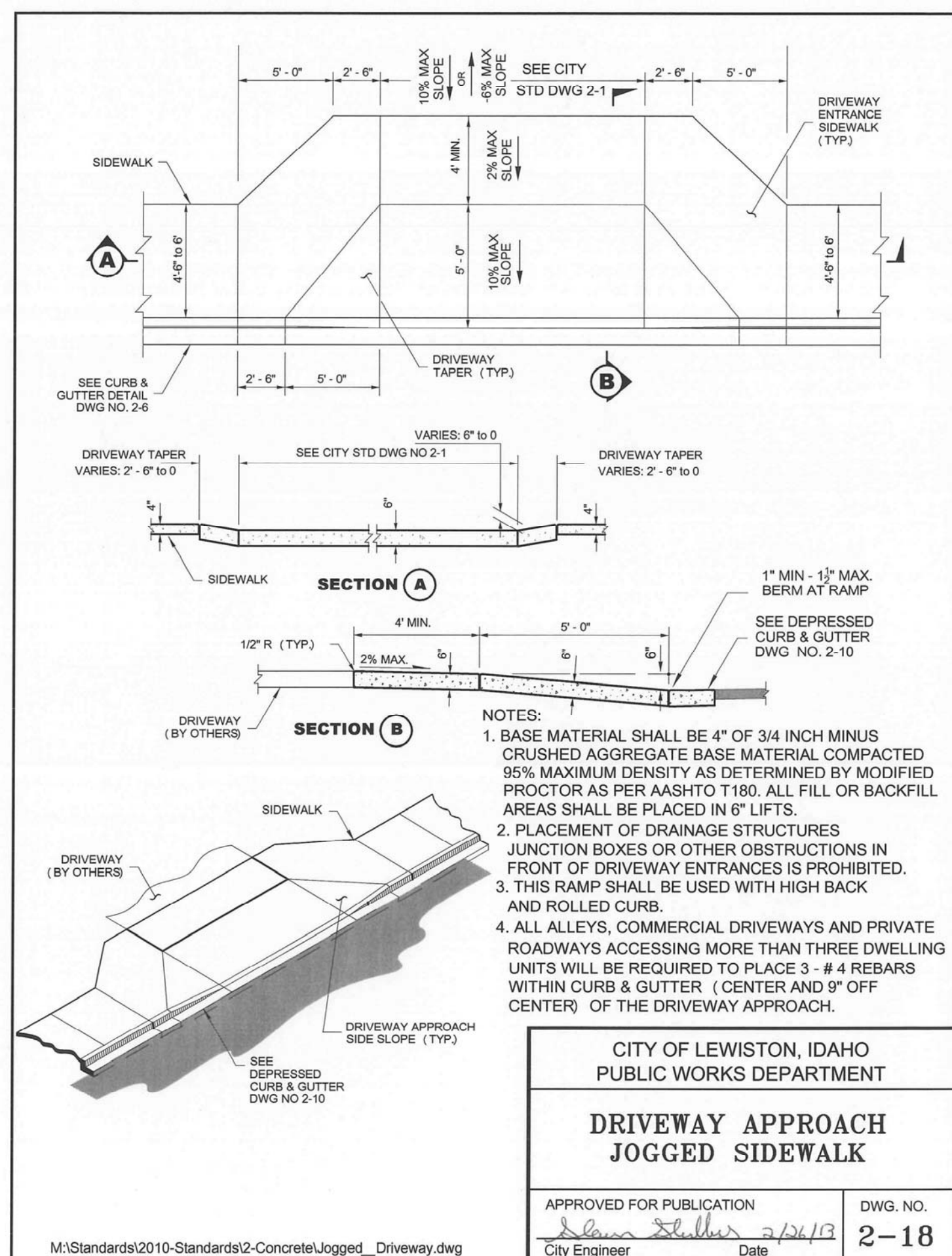
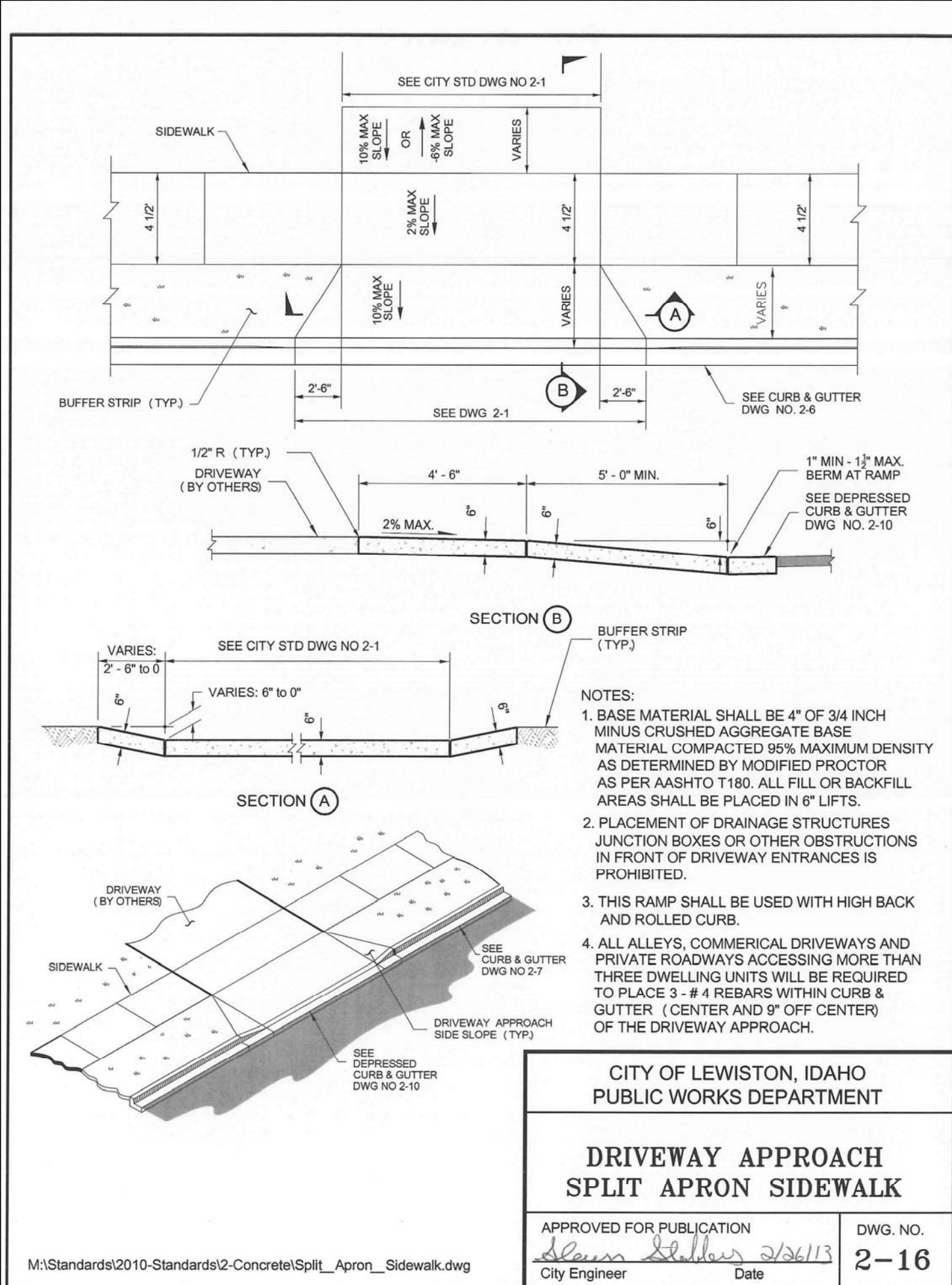
M:\Standards\2010 - Standards\2 - Concrete\General_Notes_Concrete.dwg

**SOUTHGATE PLAZA - PHASE II
PARKING LOT & FRONTAGE IMPROVEMENTS
STANDARD DETAILS
ALEXANDER INVESTORS
LEWISTON, IDAHO**

HEDCO

HAMMOND ENGINEERING & DEVELOPMENT CO.
528 BRYDEN AVENUE
LEWISTON, IDAHO 83501
(208) 786-5422

SHEET
C8



**SOUTHGATE PLAZA - PHASE II
PARKING LOT & FRONTAGE IMPROVEMENTS
STANDARD DETAILS
ALEXANDER INVESTORS
LEWISTON, IDAHO**

HEDCO
HAMMOND ENGINEERING & DEVELOPMENT CO.
528 BRYDEN AVENUE
LEWISTON, IDAHO 83501
(208) 746-5424

REVISION

NO.	DATE	DESCRIPTION	CHECKED	APPROVED
1	10-26-16	Revised Thrust Block Details		

PROFESSIONAL ENGINEER AND SURVEYOR
ALEXANDER INVESTORS
#2107
5/10/16
ALEXANDER INVESTORS
ALEXANDER INVESTORS
2/10/16

DRAFT
11/2/17

1603-C9

C9