

Drawing Name:Port of Lewiston	Drawn By: Ron Glessner 05-14-18					Revised	06-25-18	RG	Contact Information Port of Lewiston Dave Doeringsfeld 208-743-5531 Outside Plant Maintenance,Ilc Ron Glessner208-661-5648	State: ID County:Nez Perce City:Lewiston
	1209 MAIN				REV.	DESCRIPTION	DATE	BY		Section: Township: Range: Legal:
					REV.	DESCRIPTION	DATE	BY		
					REV.	DESCRIPTION	DATE	BY		
					REV.	DESCRIPTION	DATE	BY		
	SIZE	FSCM NO	DWG NO	REV						
	SCALE			SHEET 1						



GENERAL CONSTRUCTION NOTES

CONTRACTOR IS RESPONSIBLE FOR ALL PERMITS EXCEPT STATE HWY., COUNTY ROAD,RAILROAD
OR WATER CROSSINGS.

RESTORATION OF ALL RIGHT OF WAY GROUND WILL BE RESTORED TO ORIGINAL CONDITION OR BETTER.

**CONTRACTOR WILL COORDINATE WITH OSP MANAGER 24 HRS. PRIOR TO BEGINNING CONSTRUCTION.
CALL OSP MANAGER WHEN CONSTRUCTION IS COMPLETED. RON 208-661-5648**

OSP MANAGER WILL CONTACT BUILDING OWNER/TENANT 24 HRS. PRIOR TO
BEGINNING CONSTRUCTION TO COORDINATE ACCESS TO BUILDINGS.

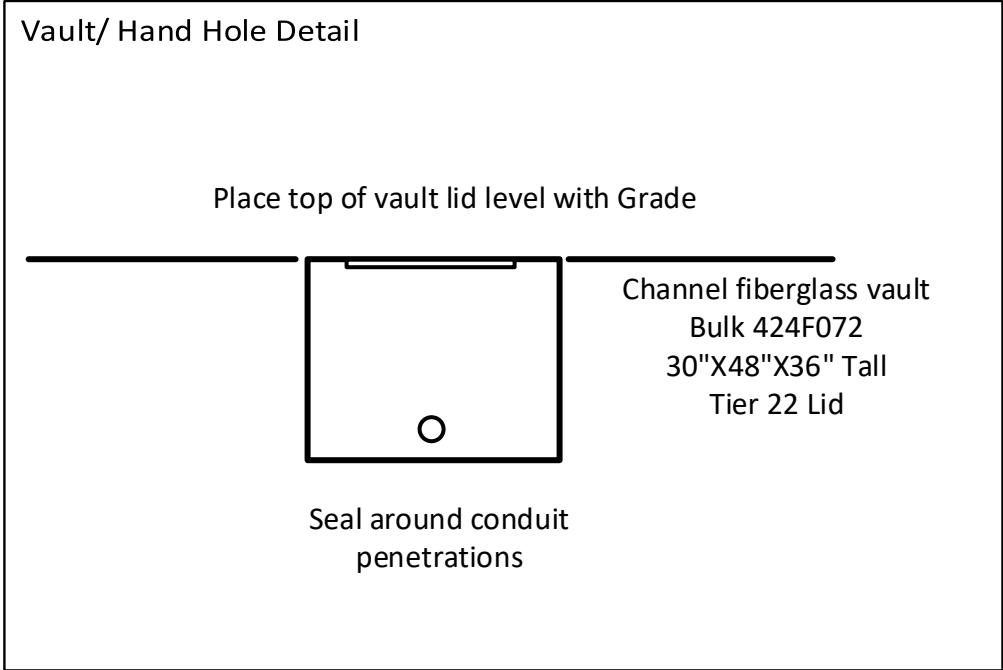
CONTRACTOR IS RESPONSIBLE FOR CALLING LOCATES AND IS RESPONSIBLE
FOR REPAIR AND RESTORATION OF DAMAGED UTILITIES.

FOLLOW ALL NESC CONSTRUCTION GUIDELINES.

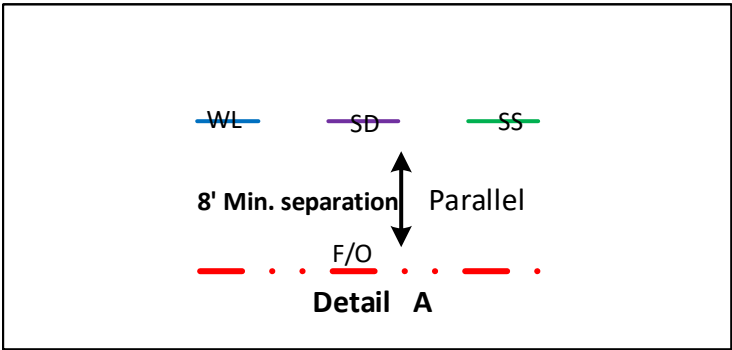
CONTRACTOR WILL HAVE ON SITE THE APPROVED DRAWINGS FROM THE UTILITY AND OR
STATE,COUNTY,CITY,RAILROAD.

CONTRACTOR WILL PROVIDE CONDUIT , HAND HOLES , ANCHORS, AERIAL HARDWARE , LOCATE WIRE

PORT OF LEWISTON (POL) WILL PROVIDE , FIBER OPTIC CABLE ,
AERIAL MARKERS , AND LINE ROUTE MARKERS.

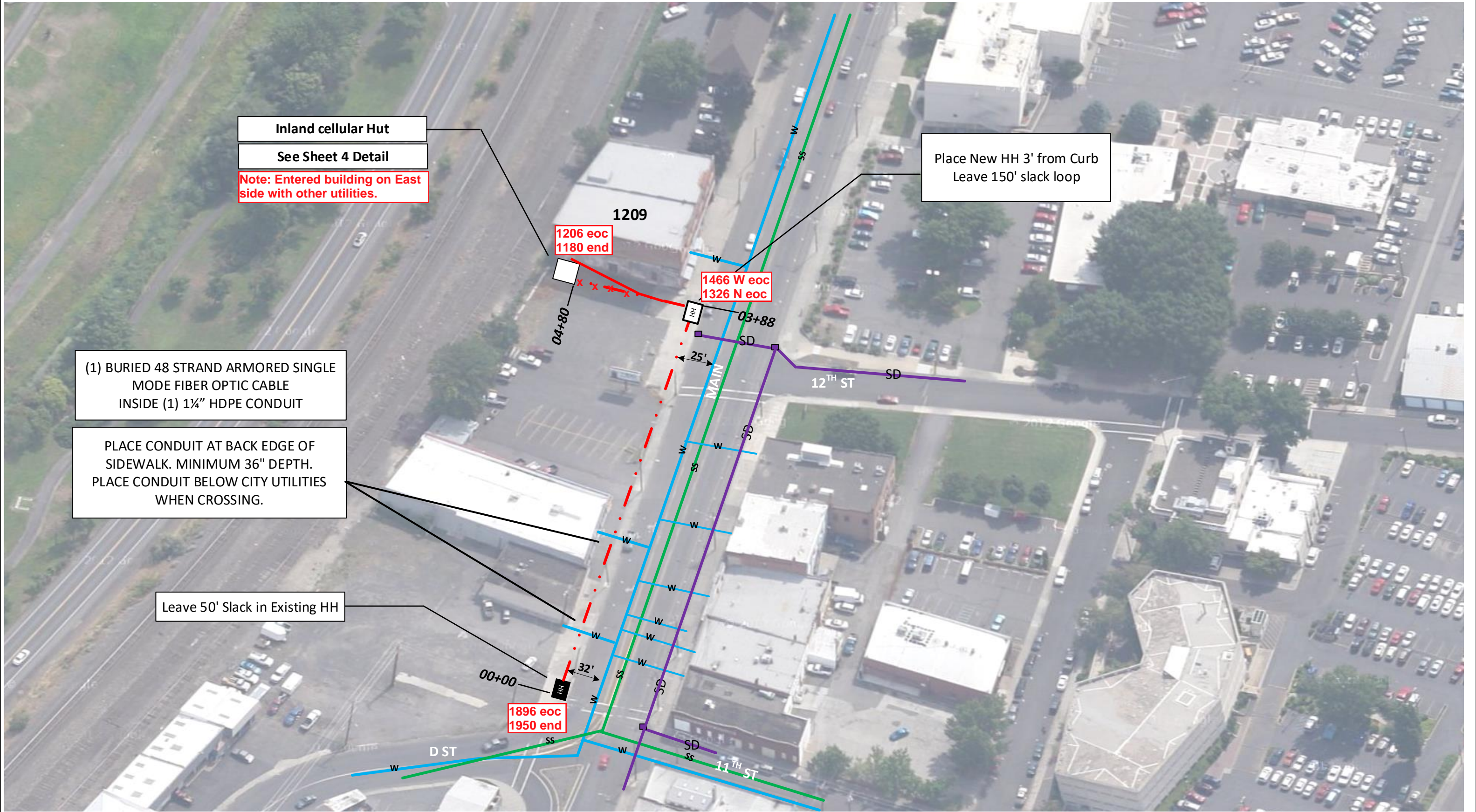


	CULVERT
	DIRECTIONAL BORE
	EXISTING CONDUIT
	BURIED CABLE
	NEW ANCHOR
	SIDEWALK ANCHOR
	EXISTING ANCHOR
	OVERHEAD GUY
	ATTACH TO POLE GROUND
	FIBER SLACK LOOP
	JOINT USE POLE
	CABLE CHANGE
	BURIED ROUTE MARKER
	EXISTING HAND HOLE
	NEW HAND HOLE

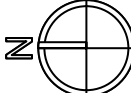



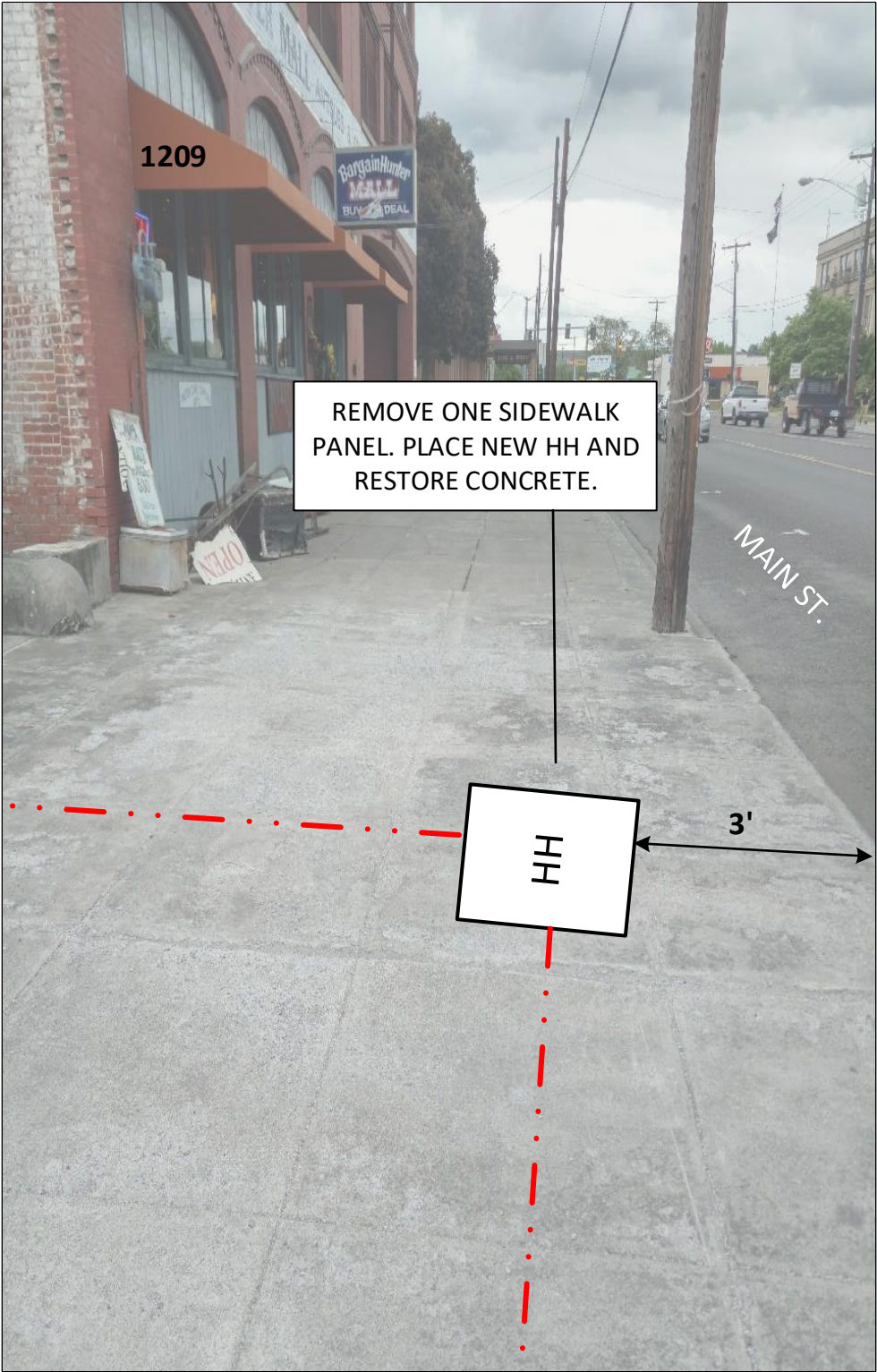
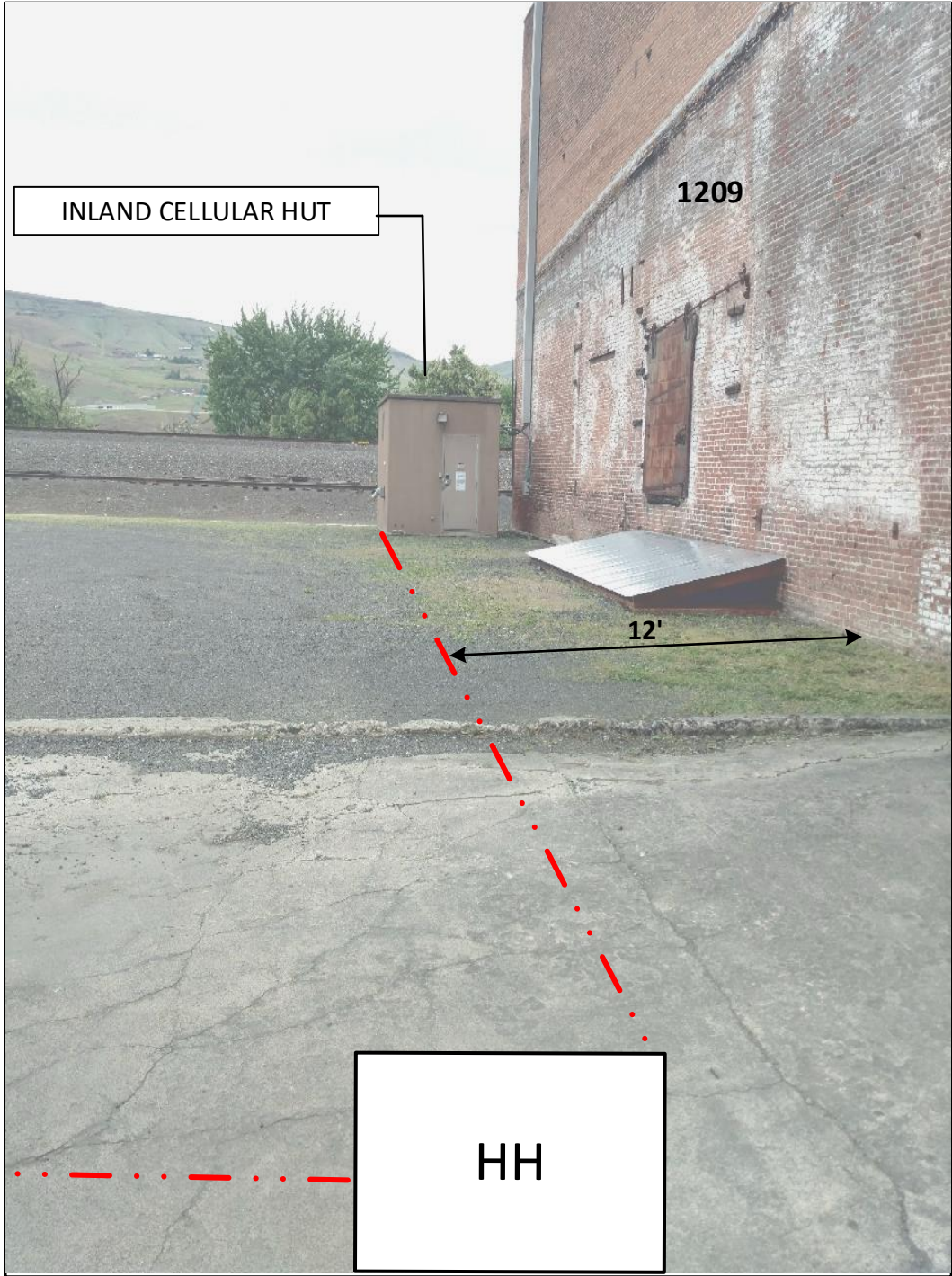
Drawing Name:Port of Lewiston	Drawn By:Ron Glessner 05-14-18					Revised	06-25-18	RG	Contact Information Port of Lewiston Dave Doeringsfeld 208-743-5531 Outside Plant Maintenance,Ilc Ron Glessner208-661-5648	State:ID. County:Nez Perce City: Lewiston
	1209 MAIN				REV.	DESCRIPTION	DATE	BY		
	SIZE	FSCM NO	DWG NO	REV	REV.	DESCRIPTION	DATE	BY		Section: Township: Range: Legal:
	SCALE	No scale		SHEET 2	REV.	DESCRIPTION	DATE	BY		





Drawing Name:Port of Lewiston		Drawn By: Ron Glessner 05-14-18				REV.	Revised	06-25-18	RG	Contact Information		State: ID County:Nez Perce City:Lewiston	
		1209 MAIN				REV.	DESCRIPTION	DATE	BY			Port of Lewiston Dave Doeringsfeld 208-743-5531 Outside Plant Maintenance,Ilc Ron Glessner208-661-5648	
	SIZE	FSCMNO	DWG NO	REV	REV.	DESCRIPTION	DATE	BY				Section: Township: Range: Legal:	
	SCALE				REV.	DESCRIPTION	DATE	BY					
					REV.	DESCRIPTION	DATE	BY					





Drawing Name:Port of Lewiston	Drawn By: Ron Glessner 05-14-18			
	1209 MAIN			
	SIZE	FSCMNO	DWG NO	REV
	SCALE		SHEET 4	

REV.	Revised	06-25-18	RG
REV.	DESCRIPTION	DATE	BY
REV.	DESCRIPTION	DATE	BY
REV.	DESCRIPTION	DATE	BY
REV.	DESCRIPTION	DATE	BY

Contact Information

Port of Lewiston
Dave Doeringsfeld
208-743-5531
Outside Plant Maintenance,Ilc
Ron Glessner208-661-5648

State: ID
County:Nez Perce
City:Lewiston

Section:
Township:
Range:
Legal:

